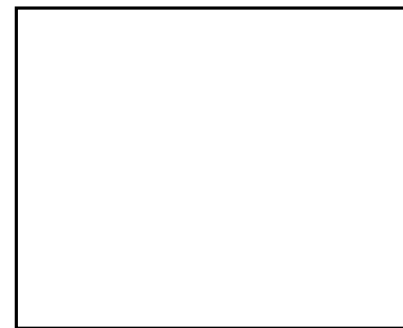
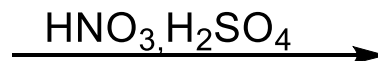
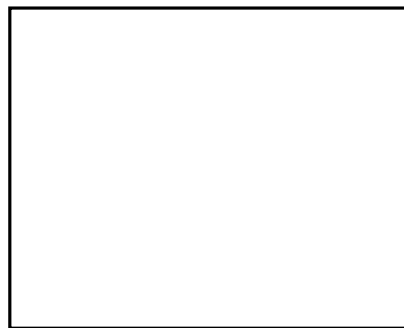
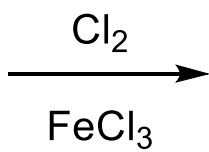
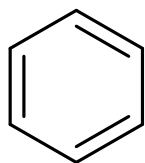
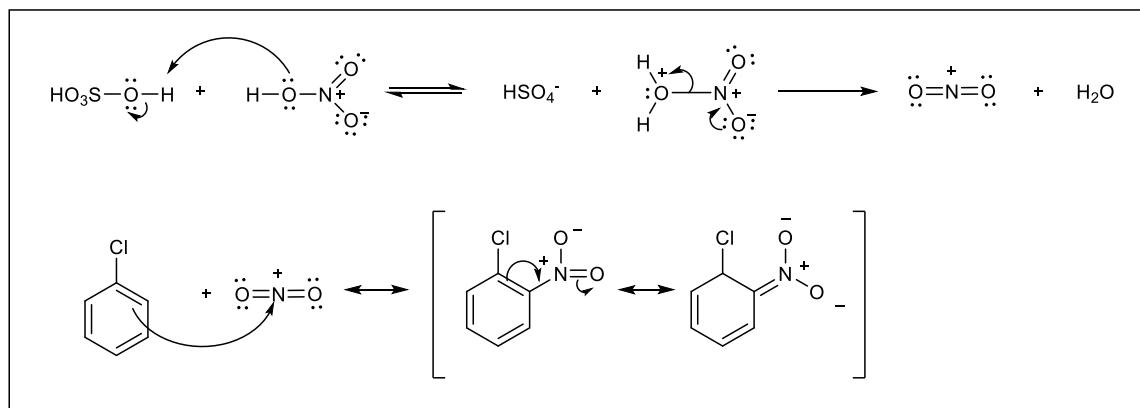


# ESERCITAZIONI: Sostituzioni elettrofile aromatiche\_1

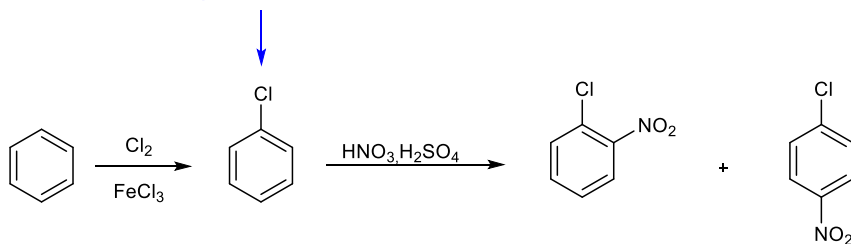


# ESERCITAZIONI: Sostituzioni elettrofile aromatiche\_1

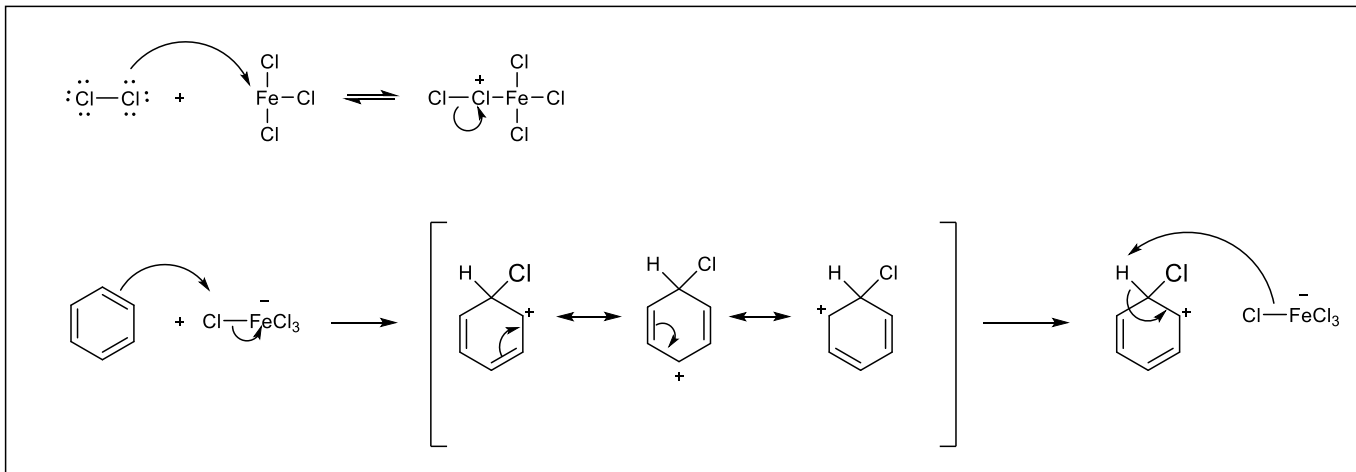
## NITRAZIONE



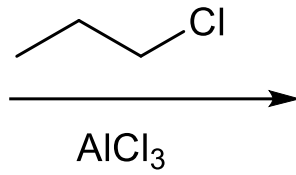
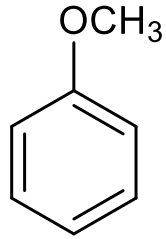
Disattivante  
orto para orientante



## CLORURAZIONE

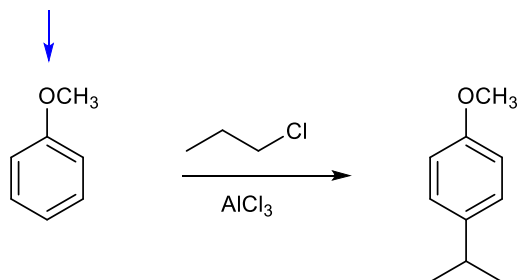


## ESERCITAZIONI: Sostituzioni elettrofile aromatiche\_2

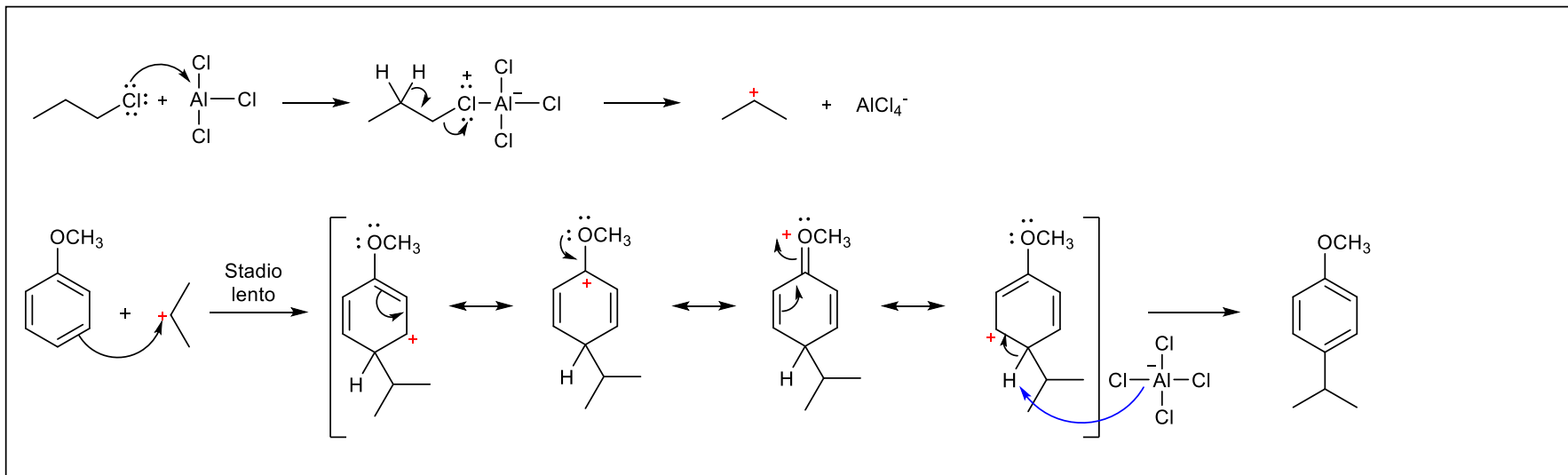


# ESERCITAZIONI: Sostituzioni elettrofile aromatiche\_2

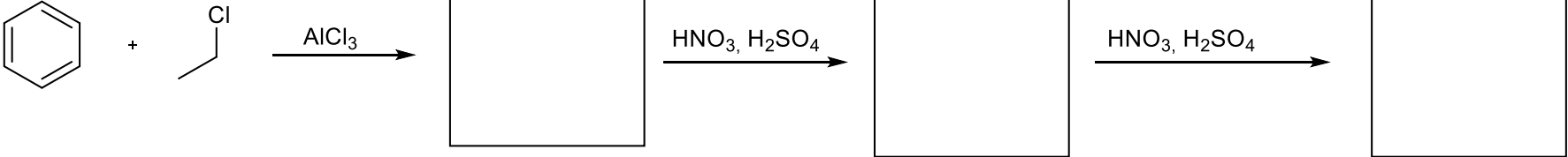
Fortemente  
attivante  
orto para orientante



## Alchilazione di Friedel-Crafts

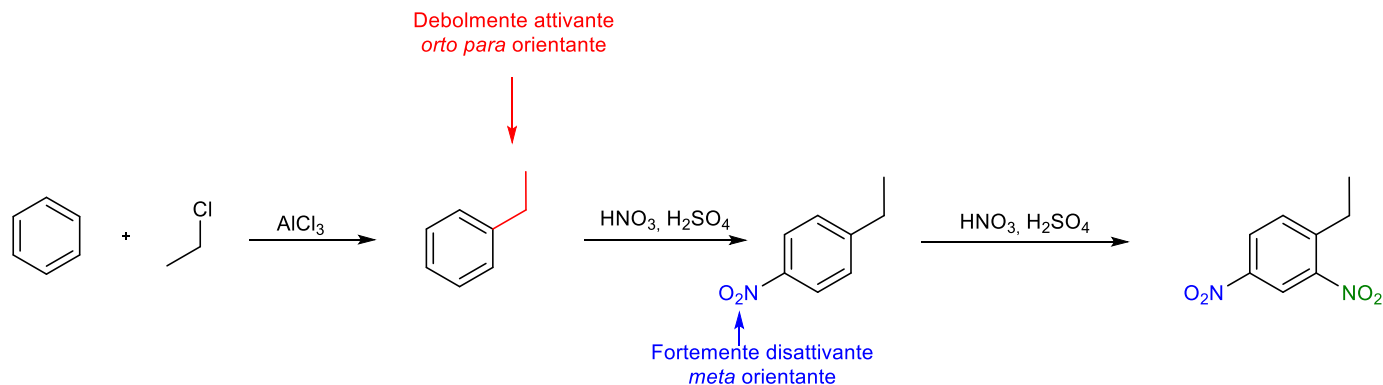
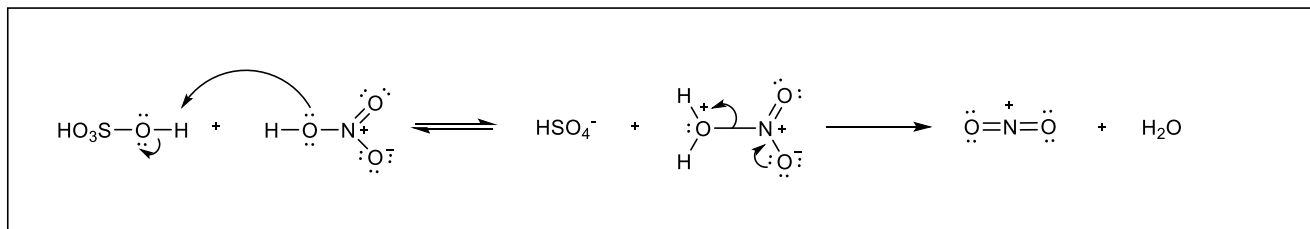


# ESERCITAZIONI: Sostituzioni elettrofile aromatiche\_3

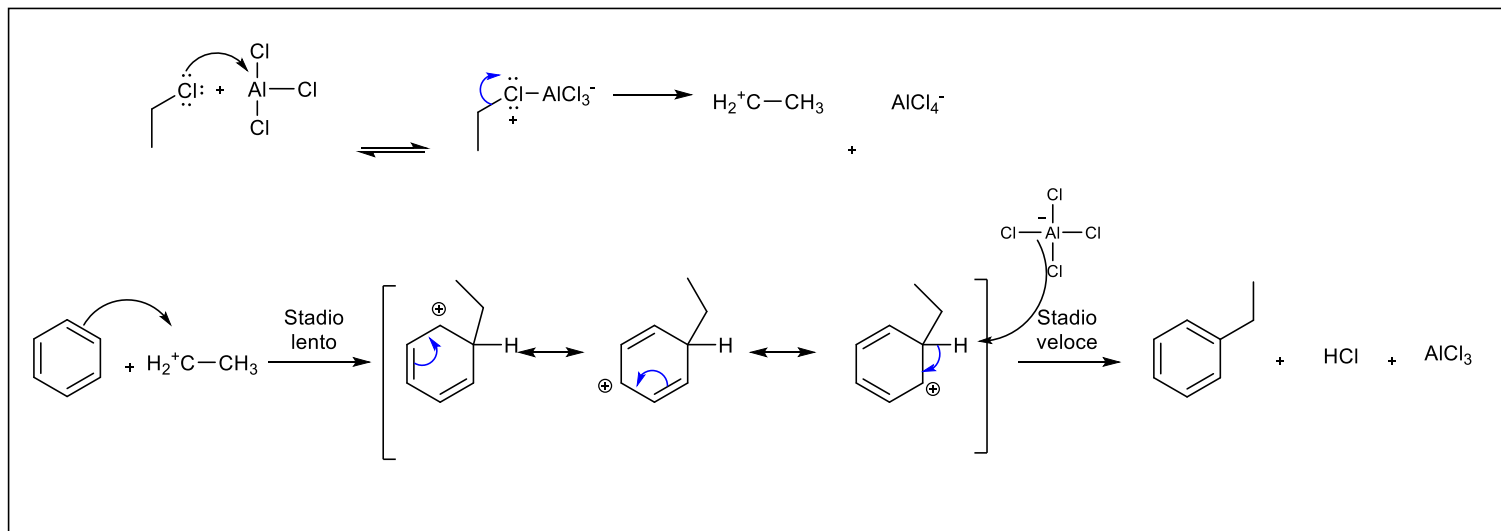


# ESERCITAZIONI: Sostituzioni elettrofile aromatiche\_3

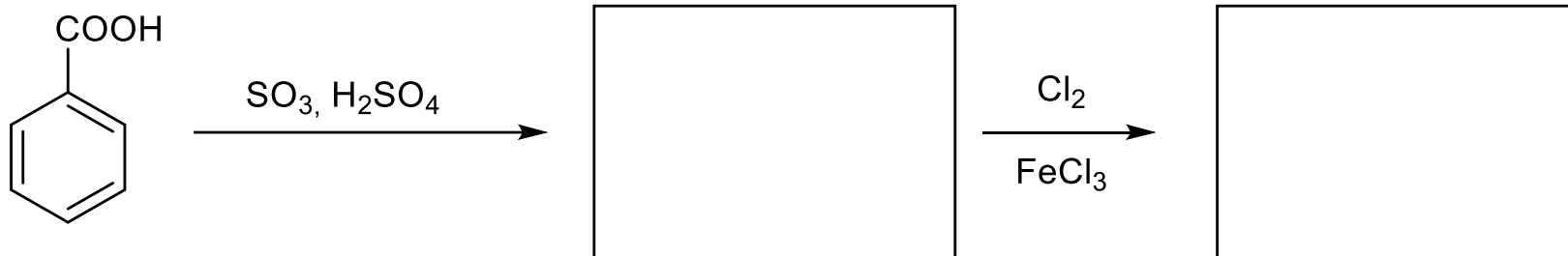
## NITRAZIONE



## ALCHILAZIONE DI FRIEDEL-CRAFTS

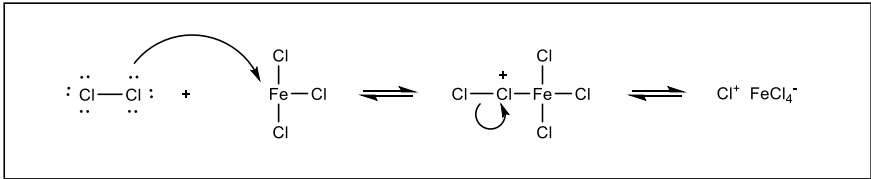


# ESERCITAZIONI: Sostituzioni elettrofile aromatiche\_4

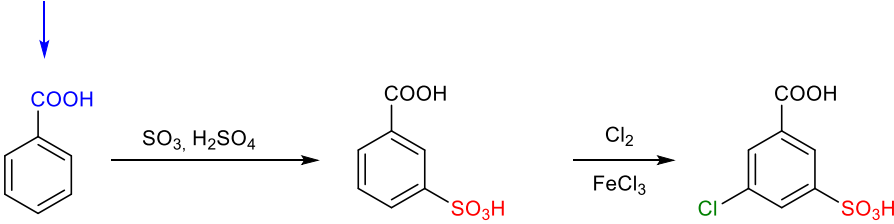


# ESERCITAZIONI: Sostituzioni elettrofile aromatiche\_4

## CLORURAZIONE

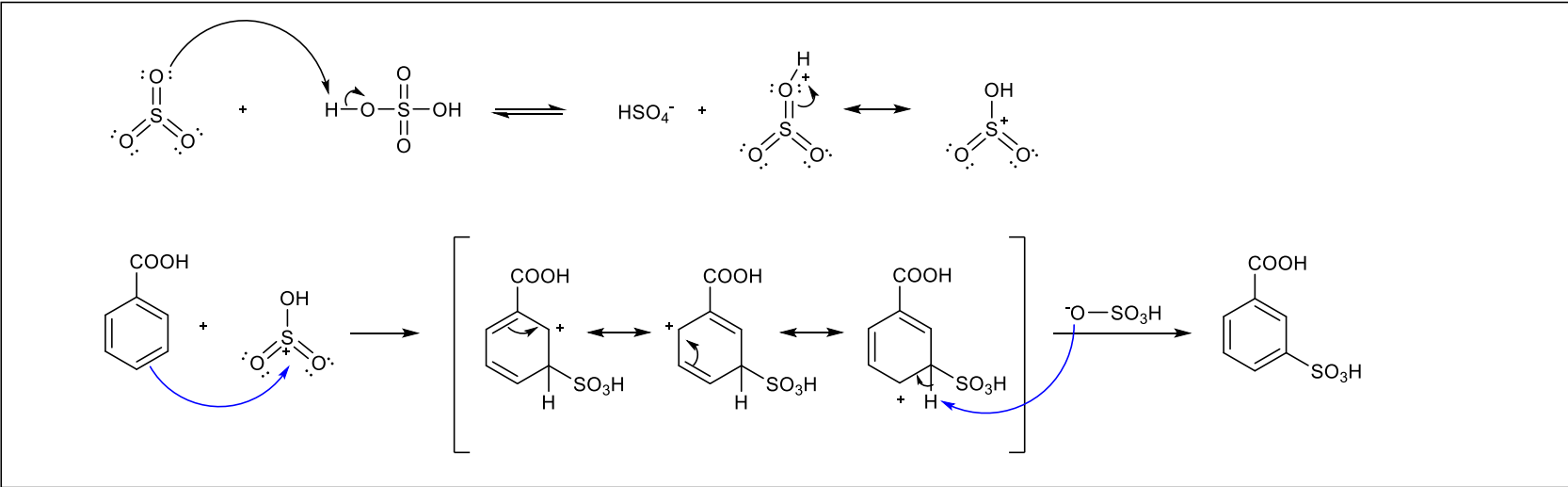


Moderatamente disattivante  
*meta* orientante



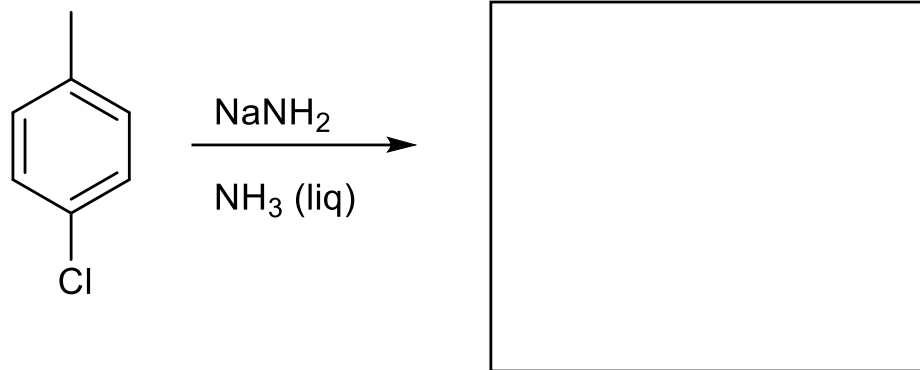
Moderatamente disattivante  
*meta* orientante

## SOLFONAZIONE

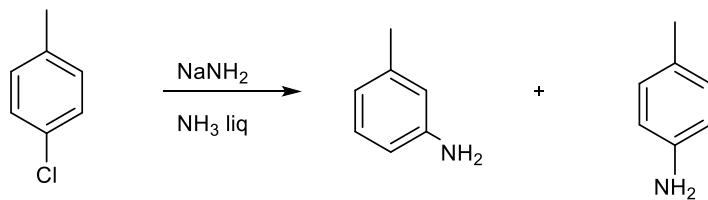




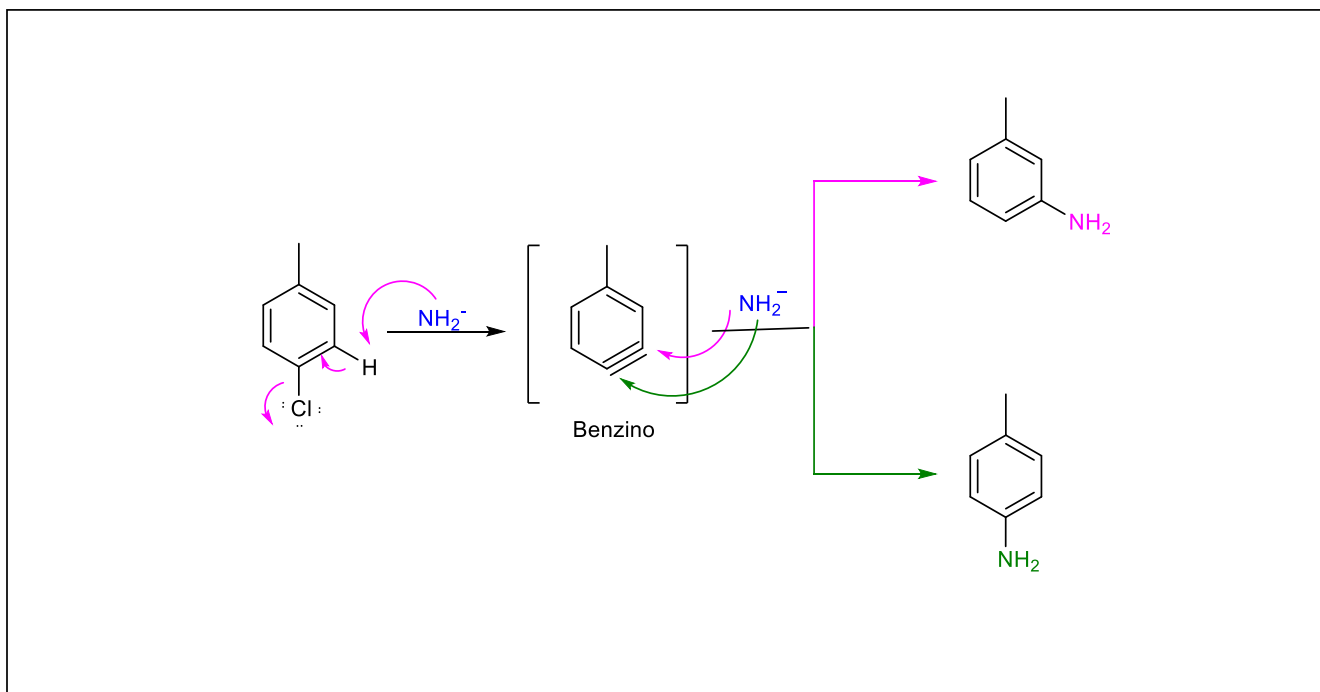
# ESERCITAZIONI: Sostituzioni Nucleofile aromatiche\_1



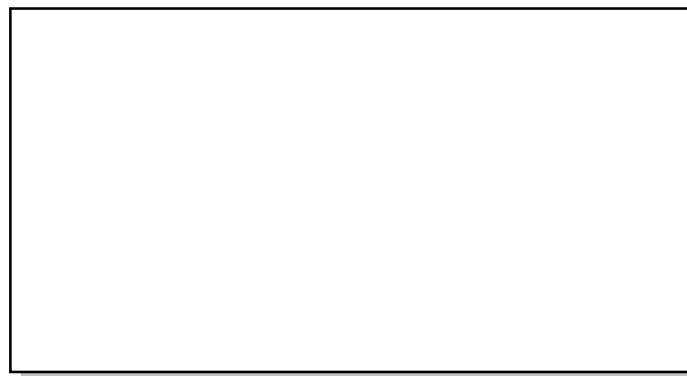
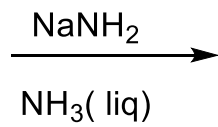
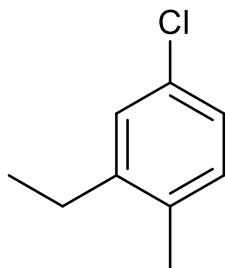
# ESERCITAZIONI: Sostituzioni Nucleofile aromatiche\_1



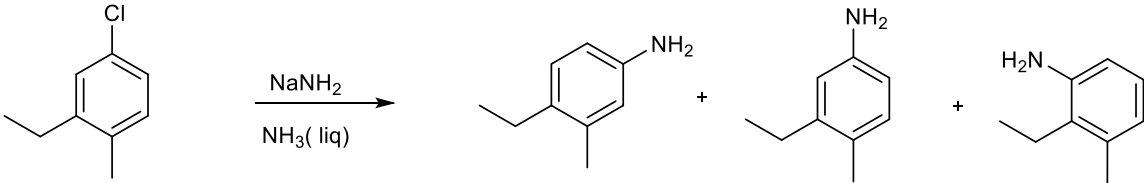
## Meccanismo



## ESERCITAZIONI: Sostituzioni Nucleofile aromatiche\_2



# ESERCITAZIONI: Sostituzioni Nucleofile aromatiche\_2



## Meccanismo

