

# Regeneration of whole fertile plants from 30,000-y-old fruit tissue buried in Siberian permafrost

Svetlana Yashina<sup>a</sup>, Stanislav Gubin<sup>b</sup>, Stanislav Maksimovich<sup>b</sup>, Alexandra Yashina<sup>a</sup>, Edith Gakhova<sup>a</sup>, and David Gilichinsky<sup>b,1</sup>

Institutes of <sup>a</sup>Cell Biophysics and <sup>b</sup>Physicochemical and Biological Problems in Soil Science, Russian Academy of Sciences, Pushchino 142290, Russia

Edited\* by P. Buford Price, University of California, Berkeley, CA, and approved January 25, 2012 (received for review November 8, 2011)

Whole, fertile plants of *Silene stenophylla* Ledeb. (Caryophyllaceae) have been uniquely regenerated from maternal, immature fruit tissue of Late Pleistocene age using *in vitro* tissue culture and clonal micropropagation. The fruits were excavated in northeastern Siberia from fossil squirrel burrows buried at a depth of 38 m in undisturbed and never thawed Late Pleistocene permafrost sediments with a temperature of  $-7\text{ }^{\circ}\text{C}$ . Accelerator mass spectrometry (AMS) radiocarbon dating showed fruits to be  $31,800 \pm 300$  y old. The total  $\gamma$ -radiation dose accumulated by the fruits during this time was calculated as 0.07 kGy; this is the maximal reported dose after which tissues remain viable and seeds still germinate. Regenerated plants were brought to flowering and fruiting and they set viable seeds. At present, plants of *S. stenophylla* are the most ancient, viable, multicellular, living organisms. Morphophysiological studies comparing regenerated and extant plants obtained from modern seeds of the same species in the same region revealed that they were distinct phenotypes of *S. stenophylla*. The first generation cultivated from seeds obtained from regenerated plants progressed through all developmental stages and had the same morphological features as parent plants. The investigation showed high cryoresistance of plant placental tissue in permafrost. This natural cryopreservation of plant tissue over many thousands of years demonstrates a role for permafrost as a depository for an ancient gene pool, i.e., preexisting life, which hypothetically has long since vanished from the earth's surface, a potential source of ancient germplasm, and a laboratory for the study of rates of microevolution.

plants of Late Quaternary | Beringia ice complex | paleoenvironment | ancient genetic resources | natural cryobank

The long-term conservation of viable biological material is an important scientific challenge. Low and extreme low temperature preservation is often used (1–3) and the most widespread natural subzero depository, permafrost (~20% of the earth's surface), is now under extensive investigation. This considerable frozen mass, up to several hundred meters deep, harbors a vast variety of viable ecological and morphological microbial groups: anaerobic and aerobic, spore-forming and non-spore-forming bacteria, green algae and cyanobacteria, yeast, actino- and micromycetes, and protozoa (4, 5). All have survived under permafrost conditions since the time of its formation.

The age of retrieved and cultivated biota corresponds to the longevity of the permanently frozen state of the embedding strata and dates back tens to hundreds of thousands of years and even more. Permafrost thawing due to anthropogenic or natural impacts exposes relict life to modern ecosystems where the ancient biota may resume physiological activity and may become part of present-day biological systems and processes. Microorganisms and their metabolic end products, the pigments chlorophyll and phaeophytin, biologically active free intra- and extracellular enzymes, biogenic gases and bacterial, archaeal, and fungal DNA occur in permafrost (6–8). Permanently frozen deposits also contain ancient evidence of higher plants, e.g., DNA preserved from 10 to 400 kya, for which plant DNA sequences are known (9) as well as viable spores of moss species.

However, to date, no viable flowering plant remains have been discovered from these ancient permafrost sediments.

Outside the permafrost zone the longevity of seeds in soil has been studied during the last 45 y in many places, including archaeological sites (10, 11). At the moment, the oldest viable seeds with the ability to germinate were radiocarbon dated to the first and eighth centuries of the Common Era. These are, respectively, *Phoenix dactylifera* found near the Dead Sea (12) and *Nelumbo nucifera* found in northeastern China (13).

The burrows from which our study material derived were buried in permanently frozen loess-ice deposits on the right bank of lower Kolyma River, northeastern Siberia (14). These deposits (Fig. 1A) are representative of a widely distributed, so-called Late Pleistocene ice complex found throughout the eastern Arctic, which has continuously accumulated during the last 60 ky. This complex comprises icy silts with a network of large syngenetic polygonal ice wedges and is richly fossil bearing (pollen, insects, plants, macrofossil, and mammal fossils). The studied burrows (Fig. 1B) were found in three exposures: Zelyony Mys, Stanchikovskiy Yar, and Duvanny Yar. The last represents a key cross-section of Late Quaternary environmental history in the eastern Arctic studied by many scientists. All burrows were found at depths of 20–40 m from the present day surface and located in layers containing bones of large mammals such as mammoth, woolly rhinoceros, bison, horse, deer, and other representatives of fauna from the age of Mammoths as well as plant remnants. The deposits were formed under tundra–steppe conditions. The Late Pleistocene age marine isotope stage 3 (MIS 3), a period between 60 and 27 ky ago during the last glacial cycle of these layers, was previously confirmed by radiocarbon, oxygen-isotope, and palynological analyses of plant and bone remnants (15, 16). The sediments have high ice content (35–80%). The present day mean annual ground temperature on the studied watershed is  $-7\text{ }^{\circ}\text{C}$ , and the depth of seasonal thawing ranges, depending on the landscape features, from 40 to 70 cm.

The ice complexes formed immediately on sedimentation, with concurrent freezing from below and have remained undisturbed since their formation. No events of permafrost degradation were observed in this continuous Late Pleistocene sequence. The presence of vertical ice wedges demonstrates that it has been continuously frozen and never thawed. Accordingly, the fossil burrows and their content have never been defrosted since burial and simultaneous freezing (17).

Seventy fossil burrows were found and more than 30 of them have been investigated so far. The plant material from fossil burrows has been dated by the radiocarbon method as being 28–32 ky old (Table 1). During burrow construction by animals, the chambers with seed and fruit storage were built against the frozen boundary of the permafrost sediments. This feature of

Author contributions: S.Y., E.G., and D.G. designed research; S.Y., S.G., S.M., and A.Y. performed research; S.Y. and D.G. analyzed data; and S.Y., S.G., and D.G. wrote the paper.

The authors declare no conflict of interest.

\*This Direct Submission article had a prearranged editor.

<sup>1</sup>To whom correspondence should be addressed. E-mail: david.gilichinsky@gmail.com.

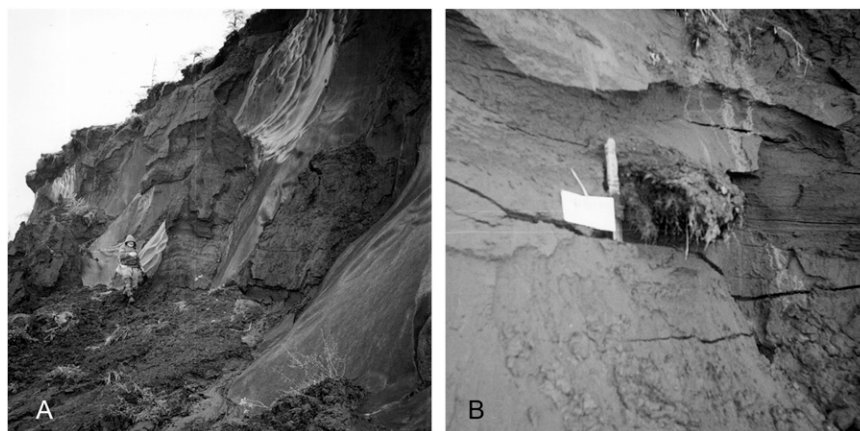


Fig. 1. Late Pleistocene loess-ice deposits of Duvanny Yar, Kolyma Lowland. (A) General view. (B) Burrow of ground squirrel buried in permafrost deposits.

storage chamber construction allowed high quality preservation of their biological material.

The storage chambers in the fossil burrows contain a great supply of plant seeds and fruits. The number of seeds and fruits reaches up to 600–800 thousand in some chambers.

Direct in situ measurements of  $\gamma$ -radiation were made in the borehole crossing the burrow buried horizon on Duvanny Yar. The observation showed that in ice complex the ground radiation level provided by natural radionuclides was 0.23  $\mu\text{Gy/h}$  or 2.01 mGy/y on average. These data correlate well with an estimate of ground radiation made using elemental analysis of the radioactive elements in ice complex samples from other boreholes in this area:  $\sim 2$  mGy/y (18) and they are similar to the ground radiation levels reported for natural radionuclides surrounding the above-mentioned seeds of *N. nucifera* in China. In this case, the total  $\gamma$ -radiation dose accumulated by 1,300-y-old fruits was calculated at  $-3$  Gy. On the basis of these data, the total  $\gamma$ -radiation dose accumulated by 28- to 32-ky-old fruits was calculated as 0.07 kGy. This is now the maximal reported dose after which tissues remain viable and seeds can still germinate.

Observations of seed viability in relation to environment show that their longevity increases as the seed storage temperature and moisture decrease (19, 20). This same situation is seen for seed viability in the permafrost. First, at subzero temperatures the rates of biochemical reactions and biological processes become extremely slow and ensure preservation of the biological system. Second, in frozen ground, ice makes up 93–98% of total

water volume (21); this frozen environment is effectively a “biologically dry” environment and favors conservation (22). There is only one previous report of plants (*Lupinus arcticus*) grown from seeds deeply buried within lemming burrows in permanently frozen silt in the central Yukon (23). However, after 40 y these seeds were dated using the accelerator mass spectrometry radiocarbon method (AMS) and it was concluded that they were not of Pleistocene age ( $>10$  ky old), but modern seeds that apparently contaminated the ancient sample (24).

The aim of our studies was regeneration of plants from seeds and fruits buried in the Late Pleistocene permafrost, 28–32 ky old and excavated from fossil burrows (Fig. 1) of *Urocitellus parryi* (an Arctic species of ground squirrel).

Previous studies (25) revealed the return of some physiological activity to the cells and tissues of seeds and fruits of four plant species from burrows in the permafrost deposits during in vitro culture. Enlargement of the cotyledon was detected in a sedge seed (*Carex* sp., Cyperaceae) from burrow P-923 of Zelyony Mys locality (Table 1). Cell division activity was detected in several radicles of *Arctous alpina* (Ericaceae). The burrows P-1026 and P-1068 (Stanchikovskiy Yar exposure) with *Arctous* seeds are located at the same level and near burrow P-1010, for which radiocarbon analysis has been done. Radicle activation was also detected in seeds of *Rumex arcticus* (Polygonaceae) from burrow P-1075. One *Rumex* seed germinated up to the cotyledon release stage but the primary shoot did not develop because of shoot apical meristem degradation. The cotyledon explants isolated from this seedling were cultured on agar media and showed initiation of callusing but did not continue further. Eruptions of radicle and subsequent callusing occurred in vitro in *Silene stenophylla* Ledeb. seeds from burrow P-923 of the Zelyony Mys exposure. However, further proliferation of callus tissue was aborted as was the case with *R. arcticus*. Primary root development also stopped because of damaged embryo and storage tissues. Nevertheless, these preliminary results showed a real possibility for obtaining material for whole plant regeneration.

In these earlier studies, we found that the seeds of *S. stenophylla* were the most promising for further investigation because they had some physiological vitality and viability. Seeds of this species are dark in color and relatively small (0.6 mm wide, 0.8 mm long). *S. stenophylla* is a perennial herbaceous plant from the family Caryophyllaceae. Seeds of wild species of this family demonstrated high resistance to both nondeep and deep freezing (26). Abundant and numerous seeds and fruits of *S. stenophylla* were found in most of the burrows. Many experiments were carried out with seeds and with both open (ripe) and closed (unripe) fruits of this species. Seeds taken from immature fruits often had a funiculus, a seedstalk, by which the seed was

Table 1. Radiocarbon age of material taken from fossil burrows of Kolyma Lowland (Northern Yakutia)

Cross-section	Burrow	Material	Radiocarbon age, y
Zelyony Mys	P-923	Plant remnants	32,800 $\pm$ 400 (IEMZH 1178)*
Zelyony Mys	P-917	Plant remnants	30,500 $\pm$ 700 (IEMZH 1179)
Stanchikovskiy Yar	P-1010	Plant remnants	27,700 $\pm$ 300 (GIN 10874)
Stanchikovskiy Yar	P-820	Seeds and fruits	28,200 $\pm$ 600 (IEMZH 1190)
Duvanny Yar	P-1075	Seeds and fruits	31,800 $\pm$ 310 (Beta 157195)

\*The laboratory number of the sample given by the institute that carried out the analysis is indicated in parentheses. IEMZH, transliteration from the Russian abbreviation of the former name of the Institute of Ecology and Evolution, Russian Academy of Sciences; GIN, Geological Institute, Russian Academy of Sciences; Beta, Beta Analytic.



attached to the placenta. These funiculi showed tissue enlargement *in vitro* (27) and, importantly, these observations led us to focus on investigations of immature fruit tissues of ancient *Silene*. Here, we describe the regeneration of whole plants from placental tissue of such fruits.

## Results

Several immature fruits were found at a depth of 38 m in a seed conglomerate from the Duvanny Yar burrow P-1075 (Table 1). *Silene* seeds and fruits were dominant in this burrow and were in a state of good morphological preservation. AMS radiocarbon dating showed them to be  $31,800 \pm 300$  y old (Beta-157195).

**Organogenesis of Shoots and Microclonal Propagation.** Our *in vitro* tissue culture method was adopted from one for the regeneration of ancient plants (28, 29). Organogenesis of adventitious shoots was induced *in vitro* directly from fragments of the placental tissue of three immature uninjured fruits. A modification of Murashige and Skoog (30) and Anderson (31) nutrient media was used for initiation of organogenesis and multiplication of shoots. Apart from ancient plants, those from extant seeds of the same species, and from the same region, were grown *in vitro* as a control. During micropropagation *in vitro* the ancient and extant plants were different, with the ancient plants producing up to 1.5–2 times more buds, whereas the extant plants produced roots more rapidly.

**Vegetative Growth and Flowering.** Rooted plants were transplanted to plastic pots with appropriate soil and placed in a growth room with controlled light and temperature. Under these conditions, plants grew and developed flowers and fruits and set seeds (Fig.

2). As is typical for *S. stenophylla* as a perennial plant, flowering and seed set occurred during the second year of the potted plants' cultivation.

Thirty-six ancient plants (12 from each fruit) and 29 extant plants were morphologically tested. All ancient plants were morphologically identical. During vegetative development, the ancient and extant plants were morphologically indistinguishable from one another. However, at the flowering stage they showed different corolla shape: petals of extant flowers were obviously wider and more dissected (Fig. 3). Moreover, all flowers of the extant plants were bisexual (b) (Fig. 3A), whereas the primary flowers (two to three in number) of each ancient plant were strictly female (f) (Fig. 3B and C, f), and then bisexual flowers were formed on each ancient plant (Fig. 3C, b).

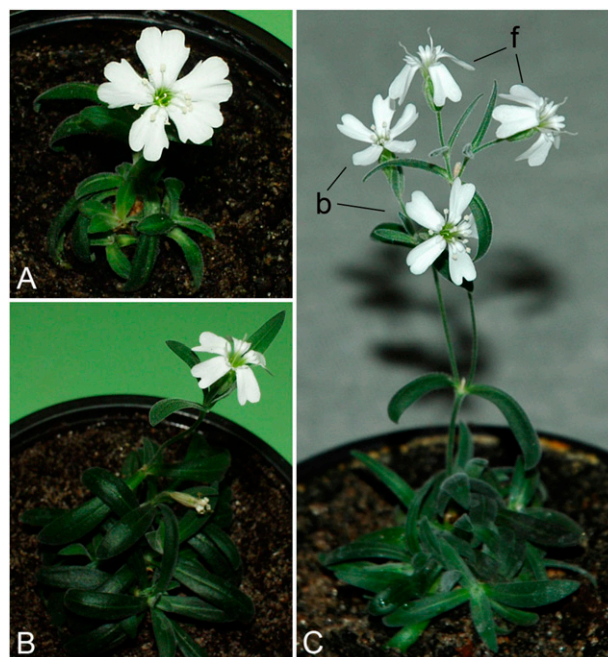
**Seed Production.** The plants were tested for their sexual fertility. It should be noted that *S. stenophylla* is allogamous and requires cross-fertilization for sexual reproduction to occur. Flowers of the ancient plants were pollinated artificially using pollen from other ancient plants; pollination of extant plants was performed similarly. The time from artificial pollination of flowers to ripening of first seeds took 8–9 wk. Laboratory germination of seeds taken from regenerated ancient plants was 100% and that of seeds from control plants was 86–90%. The first generation cultivated from seeds obtained from regenerated plants progressed through all developmental stages and showed the same morphological features as the parent plants. The taxonomic identification of both ancient and extant regenerated plants was verified at the Department of Higher Plants, Moscow State University, Moscow, Russia. The ancient plants were considered to be a distinct phenotype from the extant plants.

## Discussion

The present study uniquely demonstrates that viable placental tissue, from immature fruits of the flowering plant *S. stenophylla*



**Fig. 2.** Fruiting plants of *Silene stenophylla* regenerated from tissue of fossil fruits. (Scale bar, 50 mm.)



**Fig. 3.** Flowering plants of *Silene stenophylla*. (A) Plant grown *in vitro* culture from seed of an extant plant. (B) Plant regenerated *in vitro* culture from tissue of fossil fruit with primary strictly female flower. (C) Plant regenerated from tissue of fossil fruit with both female (f) and bisexual (b) flowers.

is preserved in Late Pleistocene sediments. These sediments date between 30,000 and 32,000 y in age and were deposited in an undisturbed permafrost environment. Under tissue culture and micropropagation, the placental tissue was able to differentiate and grow to become fertile adult plants.

The principal points of discussion in support of this discovery are: The provenance and age of the fruits, the basis for preservation, the resilience of placental tissue, phenotypic plasticity, and the opportunities provided by permafrost environments for preserving ancient and modern germplasm of higher plants.

**Provenance.** The fruits, from which placental tissue was obtained, came from similar and immediately adjacent ice conglomerates that were used to establish the age of the deposits. We dated the age of the seeds from the closed fruits and regenerated the plants from the placental tissue to which these very seeds were attached in the process of their formation. Thus, we ensured “direct radiocarbon dating.”

In view of the Porsild et al. (23) paper on seeds of *Lupinus* from the Yukon and its refutation by Zazula et al. (24), showing that contamination of old seed by recent seed had occurred in lemming burrows within Pleistocene deposits, we were careful to assess the possibility that this may have happened with our material. We have high confidence that no contamination took place after the onset of freezing. The fossil burrows are well below the seasonal thawing (active) layer and more than 35 m below the permafrost table. Further, we know of no animals that burrow deeper than the active layer. The permafrost table is the upper boundary of deep sediments within which physical and biogeochemical exchanges occur and through which external factors and processes do not cross. The embedding over- and underlying sediments are firmly cemented together and are often totally filled in by ice. These sediments represent a closed system where there are no water-bearing horizons or water infiltration. Thus, within the permafrost sediments the penetration of seeds to the deeper frozen layers could not have occurred from outside; they exist in situ. Further, penetration along pores can also be virtually ruled out because the diameter of the average pore is less than 0.1 mm, compared with seed diameters of 0.6–0.8 mm and diameters of 2–4 mm for fruits.

**Basis for Preservation.** The food storage chambers of squirrels are built adjacent to ice wedges and frozen sediment. The material within burrows and the embedding strata provide important evidence of rapid freezing and subsequent preservation without defrosting. Gubin et al. (17) have demonstrated that studied individual burrows have only a single entrance at ground level and the fossil burrows were sealed by loess and became rapidly and permanently frozen. As cited in the Introduction, it is well known that representatives of nearly all single-cell and lower plant biota can survive over long geological periods at subzero temperatures and biologically dry milieu of the permafrost. The long-term subzero temperature regime of the permafrost preserves living tissue through stabilization via dehydration, which leads to a considerable decrease of biochemical and metabolic activities. Thus, it is reasonable to expect that higher plant tissues, especially those associated with reproductive processes, can be expected to survive better within the permafrost sediments than in any other known habitat. It is also possible that low doses of radiation also might have an effect on the viability of biological objects (13, 32).

**Tissue Resilience.** Among the various approaches used to seek the viability of seed and fruit material in this study, only the placental tissues from immature fruits had sufficient vitality to be cultured and grown to whole, healthy, fertile adult plants. An explanation for the success with placental tissue may lie with the high metabolic activity of these tissues as reported by Pontovich (33). The

placenta is involved in the regulation and transport of nutrient substances synthesized in its own tissues as well as in other tissues of a plant. The high concentration of organic substances, including sucrose, responsible for the cryoresistance, is the likely reason that allowed high-quality preservation of fruits and their contents in permafrost. The morphogenic factor, composed of active phenolic compounds, is localized in the placenta (33). Phenolic compounds, accumulating in plant tissues under low temperatures, are well known for their protective function and may be produced as a stress response. The high morphogenic potential of placental tissue of the fossil fruits observed here may, therefore, result from special metabolic properties not only of the placental tissue itself but of the whole organism, which developed under the cold, dry climatic conditions of Late Pleistocene. Well-preserved placentae were observed only in fruits with intact and undamaged pericarp. The good preservation of placenta is probably further due to the hermetic conditions in the immature fruit. Finally, immature tissues and organs are known to be more regenerative in vitro than mature tissues and organs (29).

**Phenotypic Plasticity.** Phenotypic plasticity, as a response to temperature conditions and photoperiod, has been reported for other members of Caryophyllaceae (34, 35). The genotype of the ancient plants may be different from that of the modern plants and may have developed under the severe climatic conditions of Late Pleistocene. The revealing of sexual dimorphism of ancient plants may also indicate that ontogeny of paleo- and extant plants were formed under different ecological conditions (36).

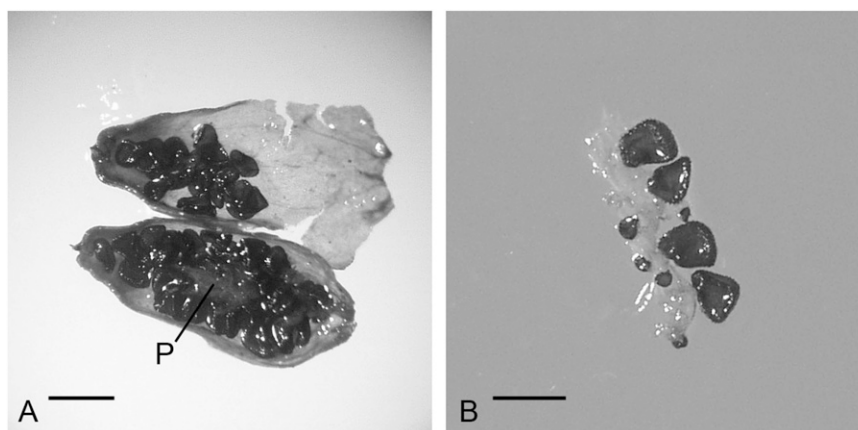
**Significance.** Naturally occurring permanently frozen sediments offer an important opportunity for the discovery of wild plant species, preservation of biological material, studying the conditions for cryopreservation, and developing germplasm collections. We consider it essential to continue permafrost studies in search of an ancient genetic pool, that of preexisting life, which hypothetically has long since vanished from the earth's surface.

## Conclusion

Late Pleistocene plant tissue of *S. stenophylla*, naturally preserved in permafrost, can be regenerated using tissue culture and micropropagation to form healthy sexually reproducing plants. The source of the ancient tissue is the placentae of immature *S. stenophylla* fruits found in buried squirrel caches. At present, plants of *S. stenophylla* are the unique representative of ancient higher plants to be cultivated successfully. Their high cryoresistance over many thousands of years demonstrates the value of permafrost sediments as a cryodepository, a potential source of ancient germplasm, and a natural laboratory for studies of cryopreservation of ancient genetic resources and rates of microevolution. In this sense, development of the Svalbard Global Seed Vault (Spits Bergen, Norway) is of great interest and importance. Duplicates of seeds of cultivated plants from different germplasm collections are to be stored in this institution ([www.nordgen.org/sgsv/](http://www.nordgen.org/sgsv/)).

The squirrel burrows with seeds have been identified within Late Pleistocene ice complex not only in eastern Siberia, but also in Alaska and Yukon (37, 38). This indicates that the whole Beringia has a great potential as storage of ancient life preserved in permafrost. Further investigations of morphological, functional, biochemical, and cytogenetic features of regenerated plants, as well as their seminal progeny, and comparison with extant species will allow us to obtain new data on the mechanisms of cryoresistance of plant cells, their adaptation potential, and additional information about environmental conditions of Late Pleistocene.





**Fig. 4.** Immature fruit of *Silene stenophylla* from burrow buried in permafrost more than 30,000 y ago. (A) Dissected fruit showing seeds and placenta (P). (B) Fragment of placenta with seeds at different developmental stages. (Scale bars, 1 mm.)

## Materials and Methods

**Biological Samples.** Many seeds and fruits from collection sites in permafrost have well preserved coats (testa and pericarp), which allow their taxonomic identification (39). Our collection of extant seeds and fruits of Kolyma lowland plants, along with seed collections of the Botanical Institute, Russian Academy of Sciences, St. Petersburg, Russia, were used for identification of ancient seeds. To date, 38 species are identified. The identity of *S. stenophylla* seeds was also confirmed by scanning electron microscopy using TESLA BS-300 (40).

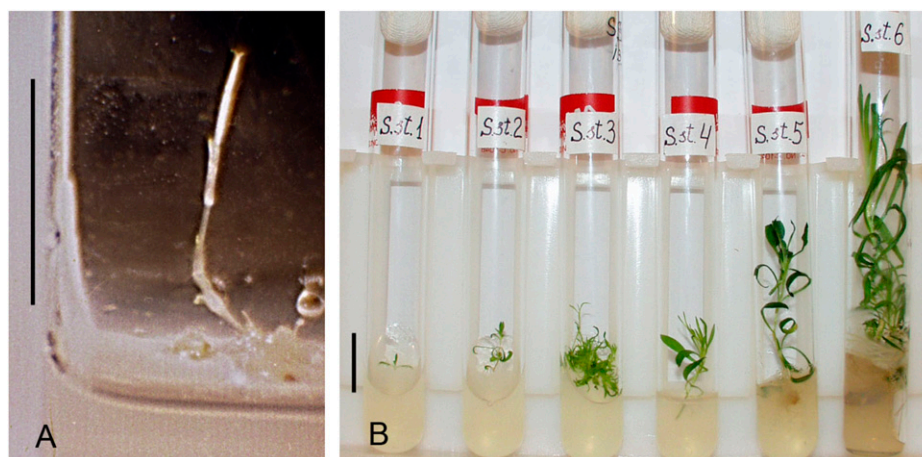
The accumulation of seeds and fruits in fossil burrows appeared as icy conglomerates. Seeds and fruits excavated from fossil burrows were immediately transferred to sterile bags, kept frozen in the field, and transported frozen to the laboratory at a temperature of  $-10^{\circ}\text{C}$ . Samples selected for the study were defrosted and examined by light microscopy to select undamaged firm seeds and fruits for investigation.

**Media for Culture in Vitro.** The following media were used: Medium 1: Murashige and Skoog basal nutrient medium (MS) rich in nutrients was supplemented with vitamins (41), ascorbic acid  $2\text{ mg l}^{-1}$ , glycine  $2\text{ mg l}^{-1}$ , myo-inositol  $100\text{ mg l}^{-1}$ , casein hydrolysate  $500\text{ mg l}^{-1}$ , 6-benzylaminopurine (BAP)  $2\text{ mg l}^{-1}$ , kinetin  $1\text{ mg l}^{-1}$ , dichlorophenoxyacetic acid (2,4-D)  $2\text{ mg l}^{-1}$ , gibberellic acid (GA)  $1\text{ mg l}^{-1}$ , and 3% sucrose. Medium 2: same as medium 1, to which 10% coconut milk was added. Medium 3: a nutrient-poor medium, consisting of the basal MS medium with sucrose concentration reduced to 1% and supplemented only with kinetin ( $0.2\text{ mg l}^{-1}$ ) and indole-3-acetic acid (IAA) ( $0.1\text{ mg l}^{-1}$ ). Modified Anderson basal nutrient medium (ABM) (31), with monobasic sodium phosphate replaced by monobasic potassium

phosphate and supplemented with ascorbic acid  $2\text{ mg l}^{-1}$ , glycine  $2\text{ mg l}^{-1}$ , myo-inositol  $100\text{ mg l}^{-1}$ , adenine  $30\text{ mg l}^{-1}$ , kinetin  $0.5\text{ mg l}^{-1}$ , BAP  $1\text{ mg l}^{-1}$ , GA  $2\text{ mg l}^{-1}$ , IAA  $0.1\text{ mg l}^{-1}$ , 1% sucrose, and vitamins (41).

**Methods. Preparation of tissue samples for culture.** Immature fruits were carefully cleaned, washed with tap water, and successively surface sterilized with 0.1% solution of corrosive sublimate (mercury bichloride  $\text{HgCl}_2$ ) with addition of Tween-80 (0.4 mL in 1,000 mL of solution) and with 70% ethanol. The tissue was washed with sterile distilled water after each disinfectant. Right after disinfection, fruits were dissected under sterile conditions. A dissected, immature fruit of *S. stenophylla*, having placental tissue and a fragment of the placenta retained with attached seeds at different developmental stages, is shown in Fig. 4. Fragments of the placenta were cultivated in vitro on media 1–3. Reagents were purchased from Sigma-Aldrich.

**Explant culture.** Explants, isolated from placentae of three different immature fruits, were cultured on the three different media (1–3) described above. Organogenesis was observed on both rich- and poor-nutrient media. Successful initiation of shoots on different media occurred, presumably due to high morphogenic and physiological potential of the placental tissue. The first shoot initiated from placental tissue is shown in Fig. 5A. The first formed shoots were etiolated as a result of being cultivated under dark conditions. When the cultures were transferred to sufficient light, shoots synthesized chlorophyll and made active growth. After 5–20 d, numerous adventitious shoots were being formed. On the poor medium, primary shoot initiation was retarded up to 7–9 d, compared with explants cultivated on both rich media (medium 1 and medium 2). Morphogenesis took place only in placental tissues from unripe fruits.



**Fig. 5.** Clonal micropropagation of *Silene stenophylla* regenerated from placenta tissue of immature 30,000-y-old fruits buried in permafrost deposits. (A) Initial shoot initiated from placental tissue in vitro. (B) Stages of clonal micropropagation from primary shoots to rooted plants. (Scale bars, 20 mm.)

**Microclonal propagation.** Shoots were multiplied through microclonal propagation in vitro on modified ABM (Fig. 5B). For micropropagation, the medium was switched from MS to ABM because of high shoot extension on MS media containing high levels of nitrogen. Plants cultivated from different fruits were maintained as separate lineages. Apart from ancient plants, those from extant seeds of the same species, and from the same region, were grown in vitro as a control lineage. All cultivation stages of ancient material were repeated in the control lineage.

Green shoots were rooted on half-strength modified ABM without the organic compounds mentioned above and further grown under low light (2,000 lx, 16/8 h light/dark period) at 22–26 °C. Rooted plants were transferred to plastic pots with high-moor peat (50%) and sand (or vermiculite, 50%) and placed in a growth room. Plants were watered as needed with

distilled water and fertilized using ABM diluted 1:4. To provide adaptation for aseptic conditions, regenerated plants were cultivated in high humidity and decreased night temperature (8–12 °C) for 70–90 d. Adapted vegetative plants were then transplanted to a potting medium with mineral nutrients, peat, sand, and modern cryozem soil taken from an area with contemporary *S. stenophylla*. To initiate the generative stage of plant development, lighting conditions close to those Arctic values were maintained (5,000 lx, 18/6 h and then 20/4 light/dark period) at a constant temperature of 18 °C.

**ACKNOWLEDGMENTS.** We thank Dr. N. V. Obrucheva for discussions and encouragement, Dr. A. G. Devyatov for verification and identification of the plants, and Professors P. J. Webber, M. M. Webber, and M. A. Holland for help with scientific editing.

1. Veprintsev BN, Rott NN (1979) Conserving genetic resources of animal species. *Nature* 280:633–634.
2. Withers LA (1985) Cryopreservation and storage of germplasm. *Plant Cell Culture. A Practical Approach*, ed Dixon RA (IRL, Oxford), pp 169–191.
3. Stanwood PC (1985) Cryopreservation of seed germplasm for genetic conservation. *Cryopreservation of Plant Cells and Organs*, ed Kartha KK (CRC, Boca Raton, FL), pp 199–226.
4. Gilichinsky DA, Rivkina EM (2011) Permafrost microbiology. *Encyclopedia of Geobiology*, eds Reitner J, Thiel V (Springer, New York), pp 726–732.
5. Steven B, Léveillé R, Pollard WH, Whyte LG (2006) Microbial ecology and biodiversity in permafrost. *Extremophiles* 10:259–267.
6. Vorobyova E, et al. (1997) The deep cold biosphere: Facts and hypothesis. *FEMS Microbiol Rev* 20:277–290.
7. Lydolph MC, et al. (2005) Beringian paleoecology inferred from permafrost-preserved fungal DNA. *Appl Environ Microbiol* 71:1012–1017.
8. Vishnivetskaya TA, et al. (2006) Bacterial community in ancient Siberian permafrost as characterized by culture and culture-independent methods. *Astrobiology* 6:400–414.
9. Willerslev E, et al. (2003) Diverse plant and animal genetic records from Holocene and Pleistocene sediments. *Science* 300:791–795.
10. Odum S (1965) Germination of ancient seeds: Floristical observations and experiments with archaeologically dated soil samples. *Dansk Botanisk Arkiv* 24:1–70.
11. Priestly DA (1986) *Seed Ageing: Implications for Seed Storage and Persistence in the Soil* (Comstock Associates, Ithaca, NY).
12. Sallon S, et al. (2008) Germination, genetics, and growth of an ancient date seed. *Science* 320:1464.
13. Shen-Miller J, et al. (2002) Long-living lotus: Germination and soil  $\gamma$ -irradiation of centuries-old fruits, and cultivation, growth, and phenotypic abnormalities of offspring. *Am J Bot* 89:236–247.
14. Gubin SV, Khasanov BF (1996) Fossil burrows of mammals in the loess-ice deposits of the Kolyma-Indigirka lowland. *Dokl Biol Sci* 346:26–27.
15. Sher AV (1974) Pleistocene mammals and stratigraphy of the Far Northeast USSR and North America. *Int Geol Rev* 16:1–284.
16. Kaplina TN, Lozhkin AV (1984) Age and history of accumulation of the “Ice Complex” of the Maritime Lowlands of Yakutia. *Late Quaternary Environments of the Soviet Union*, eds Velichko AA, Wright HE, Barnosky CW (University of Minnesota Press, Minneapolis), pp 147–151.
17. Gubin SV, et al. (2003) [The possible contribution of late pleistocene biota to biodiversity in present permafrost zone]. *Zh Obshch Biol* 64:160–165.
18. McKay CP (2001) The Deep Biosphere: Lessons for Planetary Exploration. *Subsurface Microbiology and Biogeochemistry*, eds Fredrekson JK, Fletcher M (Wiley-Liss, New York), pp 315–327.
19. Ellis RH, Roberts EH (1980) Improved equations for the prediction the seed longevity. *Ann Bot (Lond)* 45:13–30.
20. Murdoch AJ, Ellis RH (2000) *Dormancy, Viability and Longevity/CAB International Seeds: The Ecology of Regeneration in the Plant Communities*, ed Fenner N (CAB International, Wallingford, UK), 2nd Ed, pp 183.214 Chapter 8.
21. Andersen DM (1967) Ice nucleation and substrate-ice interface. *Nature* 216:563–566.
22. Gilichinsky DA, Wagener S, Vishnivetskaya TA (1995) Permafrost microbiology. *Permafrost and Periglacial Processes* 6:281–291.
23. Porsild AE, Harington CR, Mulligan GA (1967) *Lupinus arcticus* Wats. grown from seeds of Pleistocene age. *Science* 158:113–114.
24. Zazula GD, Harington CR, Telka AM, Brock F (2009) Radiocarbon dates reveal that *Lupinus arcticus* plants were grown from modern not Pleistocene seeds. *New Phytol* 182:788–792.
25. Yashina SG, Gubin SV, Shabaeva EV, Egorova EF, Maksimovich SV (2002) Viability of higher plant seeds of late pleistocene age from permafrost deposits as determined by in vitro culturing. *Dokl Biol Sci* 383:151–154.
26. Tikhonova VL, Yashina SG (1997) Long-term storage of endangered wild plant seeds. *Physiology and General Biology Reviews*, ed Turpaev TM (Harwood Academic Publishers, Amsterdam), pp 1–33.
27. Yashina SG, Gakhova EN, Gubin SV (2003) Permafrost as a natural cryobank of late Pleistocene and modern plant germplasm. *Permafrost. Extended Abstracts Reporting Current Research and New Information*, eds Haerberli W, Brandova D (Glaciology and Geomorphodynamics Group, Geography Department, University of Zurich, Switzerland), pp 187–188.
28. Butenko RG (1964) *Culture of Isolated Tissues and the Physiology of Plant Morphogenesis* (Nauka, Moscow) in Russian.
29. Tisserat B (1985) Embryogenesis, organogenesis and plant regeneration. *Plant Cell Culture. A Practical Approach*, ed Dixon RA (IRL, Oxford), pp 79–126.
30. Murashige T, Skoog F (1962) A revised medium for rapid growth and bioassays with tobacco tissue cultures. *Physiol Plant* 15:473–497.
31. Anderson WC (1978) Rooting of tissue cultured rhododendrons. *Proc Inter Plant Prop Soc* 28:135–139.
32. Kuzin AM (2002) *Role of Natural Radioactivity and Secondary Biogenic Radiation in a Phenomenon of Life* (Nauka, Moscow) in Russian.
33. Pontovich VE (1970) Culture of tissues of reproductive organs. *Culture of Plant Organs, Tissues and Cells*, ed Butenko R (Nauka, Moscow), pp 7–20 in Russian.
34. Macdonald SE, Chinnappa CC, Reid DM (1984) Studies on *Stellaria longipes* Goldie complex: Phenotypic plasticity. I. Response of stem elongation to temperature and photoperiod. *Can J Bot* 62:414–419.
35. Chinnappa CC, Donald GM, Sasidharan R, Emery RJN (2005) The biology of *Stellaria longipes* (Caryophyllaceae). *Can J Bot* 83:1367–1383.
36. Khryanin VN (2002) Role of phytohormones in sex differentiation in plants. *Russ J Plant Physiol* 49:545–551.
37. Gaglioti BV, Barnes BM, Zazula GD, Beaudoin AB, Wooller MJ (2011) Late Pleistocene paleoecology of arctic ground squirrel (*Urocyon parryi*) caches and nests from Interior Alaska’s mammoth steppe ecosystem, USA. *Quat Res* 76:373–382.
38. Zazula GD, Froese DG, Elias SA, Kuzmina S, Mathewes RW (2007) Arctic ground squirrels of the mammoth-steppe: Paleoecology of Late Pleistocene middens (24 000–29 450  $^{14}$ C yr BP), Yukon Territory, Canada. *Quat Sci Rev* 26:979–1003.
39. Gubin SV, Maximovich SV, Zanina OG, Stakhov VL (2011) Morphogenetics of plant remains from paleosols and rodent burrows buried in permafrost of the Late Pleistocene (32–28,000 BP). *Plant Archaeogenetics*, ed Gyulai G (Nova Science, New York), pp 11–21.
40. Başı GA, et al. (2009) Light and scanning electron microscopic analysis of *Silene stenophylla* seeds excavated from Pleistocene-Age (Kolyma). *Anadolu Univ J Sci Technol* 10:161–167.
41. White PR (1963) *The Cultivation of Animal and Plant Cells* (Ronald Press, New York).