

Rivaroxaban with or without Aspirin in Stable Cardiovascular Disease

J.W. Eikelboom, S.J. Connolly, J. Bosch, G.R. Dagenais, R.G. Hart, O. Shestakovska, R. Diaz, M. Alings, E.M. Lonn, S.S. Anand, P. Widimsky, M. Hori, A. Avezum, L.S. Piegas, K.R.H. Branch, J. Probstfield, D.L. Bhatt, J. Zhu, Y. Liang, A.P. Maggioni, P. Lopez-Jaramillo, M. O'Donnell, A.K. Kakkar, K.A.A. Fox, A.N. Parkhomenko, G. Ertl, S. Störk, M. Keltai, L. Ryden, N. Pogossova, A.L. Dans, F. Lanus, P.J. Commerford, C. Torp-Pedersen, T.J. Guzik, P.B. Verhamme, D. Vinereanu, J.-H. Kim, A.M. Tonkin, B.S. Lewis, C. Felix, K. Yusoff, P.G. Steg, K.P. Metsarinen, N. Cook Bruns, F. Misselwitz, E. Chen, D. Leong, and S. Yusuf, for the COMPASS Investigators*

ABSTRACT

BACKGROUND

We evaluated whether rivaroxaban alone or in combination with aspirin would be more effective than aspirin alone for secondary cardiovascular prevention.

METHODS

In this double-blind trial, we randomly assigned 27,395 participants with stable atherosclerotic vascular disease to receive rivaroxaban (2.5 mg twice daily) plus aspirin (100 mg once daily), rivaroxaban (5 mg twice daily), or aspirin (100 mg once daily). The primary outcome was a composite of cardiovascular death, stroke, or myocardial infarction. The study was stopped for superiority of the rivaroxaban-plus-aspirin group after a mean follow-up of 23 months.

RESULTS

The primary outcome occurred in fewer patients in the rivaroxaban-plus-aspirin group than in the aspirin-alone group (379 patients [4.1%] vs. 496 patients [5.4%]; hazard ratio, 0.76; 95% confidence interval [CI], 0.66 to 0.86; $P < 0.001$; $z = -4.126$), but major bleeding events occurred in more patients in the rivaroxaban-plus-aspirin group (288 patients [3.1%] vs. 170 patients [1.9%]; hazard ratio, 1.70; 95% CI, 1.40 to 2.05; $P < 0.001$). There was no significant difference in intracranial or fatal bleeding between these two groups. There were 313 deaths (3.4%) in the rivaroxaban-plus-aspirin group as compared with 378 (4.1%) in the aspirin-alone group (hazard ratio, 0.82; 95% CI, 0.71 to 0.96; $P = 0.01$; threshold P value for significance, 0.0025). The primary outcome did not occur in significantly fewer patients in the rivaroxaban-alone group than in the aspirin-alone group, but major bleeding events occurred in more patients in the rivaroxaban-alone group.

CONCLUSIONS

Among patients with stable atherosclerotic vascular disease, those assigned to rivaroxaban (2.5 mg twice daily) plus aspirin had better cardiovascular outcomes and more major bleeding events than those assigned to aspirin alone. Rivaroxaban (5 mg twice daily) alone did not result in better cardiovascular outcomes than aspirin alone and resulted in more major bleeding events. (Funded by Bayer; COMPASS ClinicalTrials.gov number, NCT01776424.)

The authors' full names, academic degrees, and affiliations are listed in the Appendix. Address reprint requests to Dr. Eikelboom at the Population Health Research Institute, McMaster University and Hamilton Health Sciences, David Braley Research Bldg., Hamilton General Hospital, 237 Barton St. E., Hamilton, ON L8L 2X2, Canada, or at eikelbj@mcmaster.ca.

*A complete list of the Cardiovascular Outcomes for People Using Anticoagulation Strategies (COMPASS) Investigators is provided in the Supplementary Appendix, available at NEJM.org.

This article was published on August 27, 2017, and updated on October 5, 2017, at NEJM.org.

N Engl J Med 2017;377:1319-30.

DOI: 10.1056/NEJMoa1709118

Copyright © 2017 Massachusetts Medical Society.

DESPITE THE USE OF EFFECTIVE SECONDARY prevention strategies, 5 to 10% of patients with cardiovascular disease have recurrent events each year.¹ When used for secondary prevention, aspirin results in a 19% lower risk of major adverse cardiovascular events and a 9% lower risk of cardiovascular death than placebo.² Long-term treatment with a vitamin K antagonist, alone or in combination with aspirin, is superior to aspirin for secondary prevention after acute myocardial infarction but is associated with more bleeding, including intracranial bleeding.³ Thus, anticoagulation has generally not been recommended for patients in this context.

Rivaroxaban is a selective direct factor Xa inhibitor that is used to prevent and treat venous thromboembolism⁴⁻⁶ and to prevent stroke or systemic embolism in atrial fibrillation.⁷ Among patients with an acute coronary syndrome, the risk of cardiovascular death, stroke, or myocardial infarction was lower with rivaroxaban (2.5 mg or 5 mg twice daily) than with placebo, and mortality was lower with the dose of 2.5 mg twice daily than with placebo.⁸ However, the risk of major bleeding was higher with rivaroxaban (at either dose) than with placebo. We designed the Cardiovascular Outcomes for People Using Anticoagulation Strategies (COMPASS) trial to test the hypothesis that rivaroxaban in combination with aspirin or given alone is more effective than aspirin alone in preventing recurrent cardiovascular events, with acceptable safety, in patients with stable atherosclerotic vascular disease.

METHODS

TRIAL CONDUCT

The COMPASS trial, conducted at 602 centers in 33 countries, is a double-blind, double-dummy, randomized trial using a 3-by-2 partial factorial design and involving patients with a history of stable atherosclerotic vascular disease.⁹ In one randomized comparison (now completed and reported here), rivaroxaban with or without aspirin was compared with aspirin alone. In the other randomized comparison (still ongoing), pantoprazole is being compared with placebo in patients participating in the trial who are not receiving a proton-pump inhibitor. For an overview of the study design, see Table S1 in the Supplementary Appendix, available with the full text of this article at NEJM.org.

The trial sponsor is Bayer. The steering com-

mittee, comprising Population Health Research Institute (PHRI) investigators, study leaders in each country, and Bayer representatives, was responsible for the development of the protocol, which is available at NEJM.org, and for the conduct and oversight of the study. The protocol was approved by the relevant health authorities and institutional review boards. A list of participating investigators and committee members is provided in the Supplementary Appendix. All the data analyses were independently performed at PHRI. The first author vouches for the completeness and accuracy of the data and analyses and for the fidelity of the trial to the protocol.

ELIGIBILITY

Patients were eligible if they provided written informed consent and met the criteria for coronary artery disease, peripheral arterial disease, or both (see the Supplementary Appendix). Patients with coronary artery disease who were younger than 65 years of age were also required to have documentation of atherosclerosis involving at least two vascular beds or to have at least two additional risk factors (current smoking, diabetes mellitus, an estimated glomerular filtration rate [GFR] <60 ml per minute, heart failure, or nonlacunar ischemic stroke ≥ 1 month earlier). Exclusion criteria were a high bleeding risk; a recent stroke or previous hemorrhagic or lacunar stroke; severe heart failure; advanced stable kidney disease (estimated GFR <15 ml per minute); the use of dual antiplatelet therapy, anticoagulation, or other antithrombotic therapy; and noncardiovascular conditions deemed by the investigator to be associated with a poor prognosis. In addition, patients receiving a proton-pump inhibitor were not eligible for the pantoprazole randomization. Written informed consent was obtained from all the participants.

RANDOMIZATION AND FOLLOW-UP

Eligible participants (except those who underwent randomization 4 to 14 days after coronary-artery bypass graft [CABG] surgery) entered a run-in phase during which they received a rivaroxaban-matched placebo twice daily and aspirin at a dose of 100 mg once daily. The purpose of the run-in phase was to identify participants who were unwilling or unable to adhere to the trial regimen, who had adverse events, or who were otherwise not suitable for randomization. Patients who underwent randomization 4 to 14 days after CABG surgery were not required to participate

in the run-in phase because thrombotic graft occlusion is most common during the first few weeks after surgery and we sought to enroll such patients promptly.

Participants who adhered to the assigned regimen and who did not have adverse events, as well as those enrolled 4 to 14 days after CABG surgery, were randomly assigned in a 1:1:1 ratio to receive rivaroxaban (2.5 mg twice daily) plus aspirin (100 mg once daily), rivaroxaban (5 mg twice daily) with an aspirin-matched placebo once daily, or aspirin (100 mg once daily) with a rivaroxaban-matched placebo twice daily, stratified according to center and the use of proton-pump inhibitor therapy at the time of randomization. Study aspirin was enteric-coated. Patients who were eligible for the proton-pump inhibitor randomization were also randomly assigned in a 1:1 ratio to receive pantoprazole (40 mg once daily) or matched placebo. After randomization, participants were seen at 1 and 6 months and then at 6-month intervals.

OUTCOMES

The primary efficacy outcome for the randomized comparison of rivaroxaban with or without aspirin versus aspirin alone was the composite of cardiovascular death, stroke, or myocardial infarction. The main safety outcome was a modification of the International Society on Thrombosis and Haemostasis (ISTH) criteria for major bleeding and included fatal bleeding, symptomatic bleeding into a critical organ, bleeding into a surgical site requiring reoperation, and bleeding that led to hospitalization (including presentation to an acute care facility without an overnight stay). Unlike the ISTH criteria,¹⁰ we considered all bleeding that led to presentation to an acute care facility or hospitalization as major.

Three secondary efficacy outcomes were specified: the composite of ischemic stroke, myocardial infarction, acute limb ischemia, or death from coronary heart disease; the composite of ischemic stroke, myocardial infarction, acute limb ischemia, or cardiovascular death; and death from any cause. Tertiary efficacy outcomes included individual components of the primary and secondary outcomes, as well as hospitalization for cardiovascular causes, revascularization, limb amputation, stent thrombosis, angina, heart failure, venous thromboembolism, resuscitated cardiac arrest, and a new diagnosis of cancer. The net-clinical-benefit outcome was the composite of cardiovascular death, stroke, myocardial infarction, fatal

bleeding, or symptomatic bleeding into a critical organ. The main outcome for the pantoprazole versus placebo randomization was upper gastrointestinal complications.⁹ Event definitions and a full list of prespecified events included in this report are provided in the Supplementary Appendix.

STATISTICAL ANALYSIS

We planned on enrolling 27,400 participants. As an event-driven trial, with an expected control-group event rate of 3.3 per 100 person-years, it was designed to continue until at least 2200 participants had a confirmed primary efficacy outcome, thereby providing 90% power to detect a 20% lower risk in each of the two comparisons of rivaroxaban versus aspirin.

An independent data and safety monitoring board monitored the study, with formal stopping guidelines for efficacy and nonformal guidelines for safety. Two formal interim analyses of efficacy were planned, when 50% and 75% of primary efficacy events had occurred. A modified Haybittle–Peto rule was used, which required a difference of 4 SD at the first interim analysis that was consistent over a period of 3 months, and a consistent difference of 3 SD at the second interim analysis (see the Supplementary Appendix).

All the outcome events in all randomly assigned patients that occurred between randomization and the date of stopping the trial were included in the analysis, according to the intention-to-treat principle. Comparisons between each of the rivaroxaban-based groups and the common aspirin control group were performed with the use of two separate log-rank tests stratified according to treatment with a proton-pump inhibitor (not randomly assigned to a proton-pump inhibitor, pantoprazole at a dose of 40 mg once daily, or a pantoprazole-matched placebo once daily). To address multiplicity related to testing two primary and six secondary hypotheses, we planned to use a mixture gatekeeping procedure based on the Hochberg test to control the familywise error rate of 5%¹¹ (see the Supplementary Appendix). However, an early stop of both antithrombotic treatment groups for efficacy had not been anticipated, and therefore a strategy for formal testing of secondary outcomes at the interim analysis was not prespecified.

Kaplan–Meier estimates of the cumulative risk were used to evaluate the timing of event occurrences in the three antithrombotic treatment groups. Hazard ratios and corresponding 95%

confidence intervals were obtained from stratified Cox proportional-hazards models. The assumptions of the Cox models were verified with plots of log of negative log of the survival function against the log of time. All reported P values are two-sided.

RESULTS

PARTICIPANTS

From March 2013 through May 2016, a total of 27,395 persons who successfully completed the run-in phase or who were enrolled 4 to 14 days after CABG surgery were randomly assigned to rivaroxaban plus aspirin, rivaroxaban, or aspirin (Fig. S1 in the Supplementary Appendix). A total of 2320 participants did not successfully complete the run-in phase and were excluded.

Baseline characteristics are presented in Table 1. The mean age of participants was 68.2 years, and 22.0% were women. Lipid-lowering agents were used by 89.8%, and angiotensin-converting-enzyme inhibitors or angiotensin-receptor blockers by 71.2%. The mean systolic blood pressure was 136 mm Hg, the mean diastolic blood pressure 78 mm Hg, and the mean total cholesterol level 4.2 mmol per liter (162 mg per deciliter). A total of 90.6% of the participants had a history of coronary artery disease, and 27.3% had a history of peripheral arterial disease.

EARLY TERMINATION, FOLLOW-UP, AND ADHERENCE

At the first formal interim analysis for efficacy (50% of planned events), the independent data

and safety monitoring board recommended early termination of the randomized comparison of rivaroxaban with or without aspirin versus aspirin alone on February 6, 2017, having observed a consistent difference in the primary efficacy outcome in favor of rivaroxaban plus aspirin ($z=-4.592$).

The z statistic for the comparison of rivaroxaban plus aspirin versus aspirin alone was larger than the prespecified 4 SD, but the z statistic for the comparison of rivaroxaban alone versus aspirin alone had not met this criterion ($z=-2.44$). Because there was a statistically significant effect for both comparisons, the data and safety monitoring board recommended stopping the rivaroxaban and aspirin groups of the trial.

Follow-up for the comparison of pantoprazole versus placebo continued and is ongoing. Vital status was available for 27,331 participants (99.8%) to February 6, 2017, and the mean duration of follow-up of these participants was 23 months (maximum duration, 47 months). At the final visit for this component of the trial, the percentage of participants who had permanently discontinued study treatment was 16.5% in the rivaroxaban-plus-aspirin group, 17.0% in the rivaroxaban-alone group, and 15.7% in the aspirin-alone group.

PRIMARY EFFICACY OUTCOME

A primary outcome event of cardiovascular death, stroke, or myocardial infarction occurred in 379 patients (4.1%) who were assigned to rivaroxa-

Table 1. Baseline Characteristics of the Participants.*

| Characteristic | Rivaroxaban plus Aspirin (N=9152) | Rivaroxaban Alone (N=9117) | Aspirin Alone (N=9126) |
|--|--------------------------------------|-------------------------------|---------------------------|
| Age — yr | 68.3±7.9 | 68.2±7.9 | 68.2±8.0 |
| Female sex — no. (%) | 2059 (22.5) | 1972 (21.6) | 1989 (21.8) |
| Body-mass index† | 28.3±4.8 | 28.3±4.6 | 28.4±4.7 |
| Blood pressure — mm Hg | | | |
| Systolic | 136±17 | 136±18 | 136±18 |
| Diastolic | 77±10 | 78±10 | 78±10 |
| Cholesterol — mmol/liter | 4.2±1.1 | 4.2±1.1 | 4.2±1.1 |
| Tobacco use — no. (%) | 1944 (21.2) | 1951 (21.4) | 1972 (21.6) |
| Hypertension — no. (%) | 6907 (75.5) | 6848 (75.1) | 6877 (75.4) |
| Diabetes — no. (%) | 3448 (37.7) | 3419 (37.5) | 3474 (38.1) |
| Previous stroke — no. (%) | 351 (3.8) | 346 (3.8) | 335 (3.7) |
| Previous myocardial infarction — no. (%) | 5654 (61.8) | 5653 (62.0) | 5721 (62.7) |
| Heart failure — no. (%) | 1963 (21.4) | 1960 (21.5) | 1979 (21.7) |

Table 1. (Continued.)

| Characteristic | Rivaroxaban plus Aspirin (N=9152) | Rivaroxaban Alone (N=9117) | Aspirin Alone (N=9126) |
|---|--------------------------------------|-------------------------------|---------------------------|
| Coronary artery disease — no. (%)‡ | 8313 (90.8) | 8250 (90.5) | 8261 (90.5) |
| Peripheral arterial disease — no. (%)§ | 2492 (27.2) | 2474 (27.1) | 2504 (27.4) |
| Estimated GFR — no. (%)¶ | | | |
| <30 ml/min | 77 (0.8) | 80 (0.9) | 86 (0.9) |
| 30 to <60 ml/min | 1977 (21.6) | 2028 (22.2) | 2028 (22.2) |
| ≥60 ml/min | 7094 (77.5) | 7005 (76.8) | 7012 (76.8) |
| Race — no. (%) | | | |
| White | 5673 (62.0) | 5672 (62.2) | 5682 (62.3) |
| Black | 76 (0.8) | 94 (1.0) | 92 (1.0) |
| Asian | 1451 (15.9) | 1421 (15.6) | 1397 (15.3) |
| Other | 1952 (21.3) | 1930 (21.2) | 1955 (21.4) |
| Geographic region — no. (%) | | | |
| North America | 1304 (14.2) | 1305 (14.3) | 1309 (14.3) |
| South America | 2054 (22.4) | 2036 (22.3) | 2054 (22.5) |
| Western Europe, Israel, Australia, or South Africa | 2855 (31.2) | 2845 (31.2) | 2855 (31.3) |
| Eastern Europe | 1607 (17.6) | 1612 (17.7) | 1604 (17.6) |
| Asia–Pacific | 1332 (14.6) | 1319 (14.5) | 1304 (14.3) |
| Medication — no. (%) | | | |
| ACE inhibitor or ARB | 6475 (70.7) | 6581 (72.2) | 6462 (70.8) |
| Calcium-channel blocker | 2413 (26.4) | 2374 (26.0) | 2482 (27.2) |
| Diuretic | 2727 (29.8) | 2666 (29.2) | 2746 (30.1) |
| Beta-blocker | 6389 (69.8) | 6401 (70.2) | 6394 (70.1) |
| Lipid-lowering agent | 8239 (90.0) | 8204 (90.0) | 8158 (89.4) |
| NSAID | 531 (5.8) | 466 (5.1) | 473 (5.2) |
| Nontrial PPI | 3268 (35.7) | 3266 (35.8) | 3264 (35.8) |

* Plus–minus values are means \pm SD. There were no significant differences among the three randomized groups. Participants in the rivaroxaban-plus-aspirin group received 2.5 mg of rivaroxaban twice daily and 100 mg of aspirin once daily. Participants in the rivaroxaban-alone group received 5 mg of rivaroxaban twice daily and an aspirin-matched placebo once daily. Participants in the aspirin-alone group received 100 mg of aspirin once daily and a rivaroxaban-matched placebo twice daily. To convert cholesterol values to milligrams per deciliter, divide by 0.02586. ACE denotes angiotensin-converting enzyme, ARB angiotensin-receptor blocker, GFR glomerular filtration rate, NSAID nonsteroidal antiinflammatory drug, and PPI proton-pump inhibitor.

† The body-mass index is the weight in kilograms divided by the square of the height in meters.

‡ Shown are patients with a history of coronary artery disease irrespective of whether it met the inclusion criteria for the trial.

§ Shown are patients with a history of peripheral arterial disease irrespective of whether it met the inclusion criteria for the trial.

¶ The GFR was calculated by means of the Chronic Kidney Disease Epidemiology Collaboration formula. Data on GFR were missing for four patients in the rivaroxaban-plus-aspirin group and four in the rivaroxaban-alone group.

|| Race was reported by the patient.

ban plus aspirin, 448 (4.9%) who were assigned to rivaroxaban alone, and 496 (5.4%) who were assigned to aspirin alone (Table 2 and Fig. 1). For the comparison of rivaroxaban (2.5 mg twice daily) plus aspirin with aspirin alone, the hazard ratio for the primary outcome was 0.76 (95% confidence interval [CI], 0.66 to 0.86; $P < 0.001$; $z = -4.126$). For the comparison of rivaroxaban (5 mg twice daily) alone with aspirin alone, the hazard ratio was 0.90 (95% CI, 0.79 to 1.03; $P = 0.12$; $z = -1.575$).

SECONDARY EFFICACY OUTCOMES

The secondary composite outcome of ischemic stroke, myocardial infarction, acute limb ischemia, or death from coronary heart disease occurred in fewer patients in the rivaroxaban-plus-aspirin group than in the aspirin-alone group (329 patients [3.6%] vs. 450 patients [4.9%]; hazard ratio, 0.72; 95% CI, 0.63 to 0.83; $P < 0.001$) (Table 2). The secondary outcome of ischemic stroke, myocardial infarction, acute limb isch-

emia, or cardiovascular death also occurred in fewer patients in the rivaroxaban-plus-aspirin group than in the aspirin-alone group (389 patients [4.3%] vs. 516 patients [5.7%]; hazard ratio, 0.74; 95% CI, 0.65 to 0.85; $P < 0.001$). There were 313 deaths (3.4%) in the rivaroxaban-plus-aspirin group as compared with 378 (4.1%) in the aspirin-alone group (hazard ratio, 0.82; 95% CI, 0.71 to 0.96; $P = 0.01$). The threshold P value using the Hochberg procedure for each of the above comparisons was 0.0025. For the regimen of rivaroxaban alone as compared with aspirin alone, because no significant effect was seen for the primary composite outcome, formal testing of the secondary outcomes was not performed.

BLEEDING AND OTHER ADVERSE EVENTS

Major bleeding events occurred in more patients in the rivaroxaban-plus-aspirin group than in the aspirin-alone group (288 patients [3.1%] vs. 170 patients [1.9%]; hazard ratio, 1.70; 95% CI, 1.40 to 2.05; $P < 0.001$) (Table 3), mainly owing to a difference in bleeding that led to presentation to an acute care facility or hospitalization. Most of the excess major bleeding was into the gastrointestinal tract, with no significant between-group difference in the rate of fatal bleeding, intracranial bleeding, or symptomatic bleeding into a critical organ. The rate of major bleeding as defined by the ISTH criteria (the composite of fatal bleeding, bleeding into a critical organ, bleeding requiring ≥ 2 units of transfusion within 48 hours, and bleeding associated with a decrease in the hemoglobin level of ≥ 2 g per deciliter) was significantly greater with rivaroxaban plus aspirin than with aspirin alone.

Major bleeding events occurred in more patients in the rivaroxaban-alone group than in the aspirin-alone group (255 patients [2.8%] vs. 170 patients [1.9%]; hazard ratio, 1.51; 95% CI, 1.25 to 1.84; $P < 0.001$) (Table 3). The excess major bleeding included symptomatic bleeding into a critical organ and bleeding that led to hospitalization.

Serious adverse events were reported in 721 patients (7.9%) assigned to rivaroxaban plus aspirin, 702 (7.7%) assigned to rivaroxaban alone, and 662 (7.3%) assigned to aspirin alone. Details of serious adverse events according to system organ class are shown in Table S2 in the Supplementary Appendix.

NET CLINICAL BENEFIT

The risk of the composite net-clinical-benefit outcome of cardiovascular death, stroke, myo-

cardial infarction, fatal bleeding, or symptomatic bleeding into a critical organ was lower with rivaroxaban plus aspirin than with aspirin alone (431 patients [4.7%] vs. 534 patients [5.9%]; hazard ratio, 0.80; 95% CI, 0.70 to 0.91; $P < 0.001$) (Table 3). The risk of the net-clinical-benefit outcome was not significantly lower with rivaroxaban alone than with aspirin alone.

SUBGROUP ANALYSES

The effects of rivaroxaban plus aspirin as compared with aspirin alone on the primary outcome (Fig. 2) and on major bleeding (Fig. S2 in the Supplementary Appendix) were consistent among subgroups that were defined according to age, sex, geographic region, race or ethnic group, body weight, renal function, and history of cardiovascular risk factors (tobacco use, hypertension, diabetes, or dyslipidemia). Results in participants who met the eligibility criteria for coronary artery disease and in those who met the eligibility criteria for peripheral arterial disease were also consistent and are being reported separately.^{12,13}

DISCUSSION

Among patients with stable atherosclerotic vascular disease, a high proportion of whom were receiving proven secondary prevention therapies, the rate of the primary outcome (a composite of cardiovascular death, stroke, or myocardial infarction) was lower by 24% with rivaroxaban (2.5 mg twice daily) plus aspirin than with aspirin alone (4.1% vs. 5.4%), but the rate of major bleeding was higher by 70% (3.1% vs. 1.9%). The rate of the net-clinical-benefit outcome was lower by 20% with rivaroxaban plus aspirin than with aspirin alone (4.7% vs. 5.9%). The comparison of rivaroxaban (5 mg twice daily) alone with aspirin alone did not show a significant difference in the primary outcome or the net-clinical-benefit outcome, but the rate of major bleeding was higher with rivaroxaban alone.

Various antithrombotic regimens have been tested as alternatives to aspirin for long-term cardiovascular prevention. Trials of vitamin K antagonists involving patients with stable cardiovascular disease showed a reduction in the risk of subsequent cardiovascular events,³ but there was no benefit in patients with peripheral arterial disease,¹⁴ and there was a significant increase in bleeding, including intracranial

Table 2. Efficacy Outcomes.*

| Outcome | Rivaroxaban plus Aspirin (N=9152) | Rivaroxaban Alone (N=9117) | Aspirin Alone (N=9126) | Rivaroxaban plus Aspirin vs. Aspirin Alone | | Rivaroxaban Alone vs. Aspirin Alone | |
|--|-----------------------------------|----------------------------|------------------------|--|---------|-------------------------------------|---------|
| | number (percent) | | | Hazard Ratio (95% CI) | P Value | Hazard Ratio (95% CI) | P Value |
| Primary outcome: CV death, stroke, or myocardial infarction† | 379 (4.1) | 448 (4.9) | 496 (5.4) | 0.76 (0.66–0.86) | <0.001 | 0.90 (0.79–1.03) | 0.12 |
| Secondary outcomes‡ | | | | | | | |
| Ischemic stroke, myocardial infarction, ALI, or death from CHD | 329 (3.6) | 397 (4.4) | 450 (4.9) | 0.72 (0.63–0.83) | <0.001 | 0.88 (0.77–1.01) | 0.06 |
| Ischemic stroke, myocardial infarction, ALI, or CV death | 389 (4.3) | 453 (5.0) | 516 (5.7) | 0.74 (0.65–0.85) | <0.001 | 0.88 (0.77–0.99) | 0.04 |
| Death from any cause | 313 (3.4) | 366 (4.0) | 378 (4.1) | 0.82 (0.71–0.96) | 0.01 | 0.97 (0.84–1.12) | 0.67 |
| Other outcomes§ | | | | | | | |
| CV death | 160 (1.7) | 195 (2.1) | 203 (2.2) | 0.78 (0.64–0.96) | 0.02 | 0.96 (0.79–1.17) | 0.69 |
| Non-CV death | 153 (1.7) | 171 (1.9) | 175 (1.9) | 0.87 (0.70–1.08) | 0.20 | 0.98 (0.79–1.21) | 0.84 |
| Death from CHD | 86 (0.9) | 128 (1.4) | 117 (1.3) | 0.73 (0.55–0.96) | 0.03 | 1.09 (0.85–1.41) | 0.48 |
| Stroke¶ | 83 (0.9) | 117 (1.3) | 142 (1.6) | 0.58 (0.44–0.76) | <0.001 | 0.82 (0.65–1.05) | 0.12 |
| Ischemic or uncertain type | 68 (0.7) | 91 (1.0) | 132 (1.4) | 0.51 (0.38–0.68) | <0.001 | 0.69 (0.53–0.90) | 0.006 |
| Hemorrhagic | 15 (0.2) | 27 (0.3) | 10 (0.1) | 1.49 (0.67–3.31) | 0.33 | 2.70 (1.31–5.58) | 0.005 |
| Myocardial infarction | 178 (1.9) | 182 (2.0) | 205 (2.2) | 0.86 (0.70–1.05) | 0.14 | 0.89 (0.73–1.08) | 0.24 |
| Heart failure | 197 (2.2) | 191 (2.1) | 192 (2.1) | 1.02 (0.84–1.24) | 0.84 | 0.99 (0.81–1.21) | 0.95 |
| Venous thromboembolism | 25 (0.3) | 36 (0.4) | 41 (0.4) | 0.61 (0.37–1.00) | 0.05 | 0.88 (0.56–1.38) | 0.58 |
| Hospitalization | | | | | | | |
| For CV causes | 1303 (14.2) | 1317 (14.4) | 1394 (15.3) | 0.92 (0.86–1.00) | 0.04 | 0.94 (0.87–1.01) | 0.11 |
| For non-CV causes | 1701 (18.6) | 1649 (18.1) | 1624 (17.8) | 1.05 (0.98–1.13) | 0.14 | 1.02 (0.95–1.09) | 0.54 |

* ALI denotes acute limb ischemia, CHD coronary heart disease, CI confidence interval, and CV cardiovascular.

† Only P values for the primary outcome are confirmatory.

‡ For details on statistical testing of secondary outcomes, see the Supplementary Appendix.

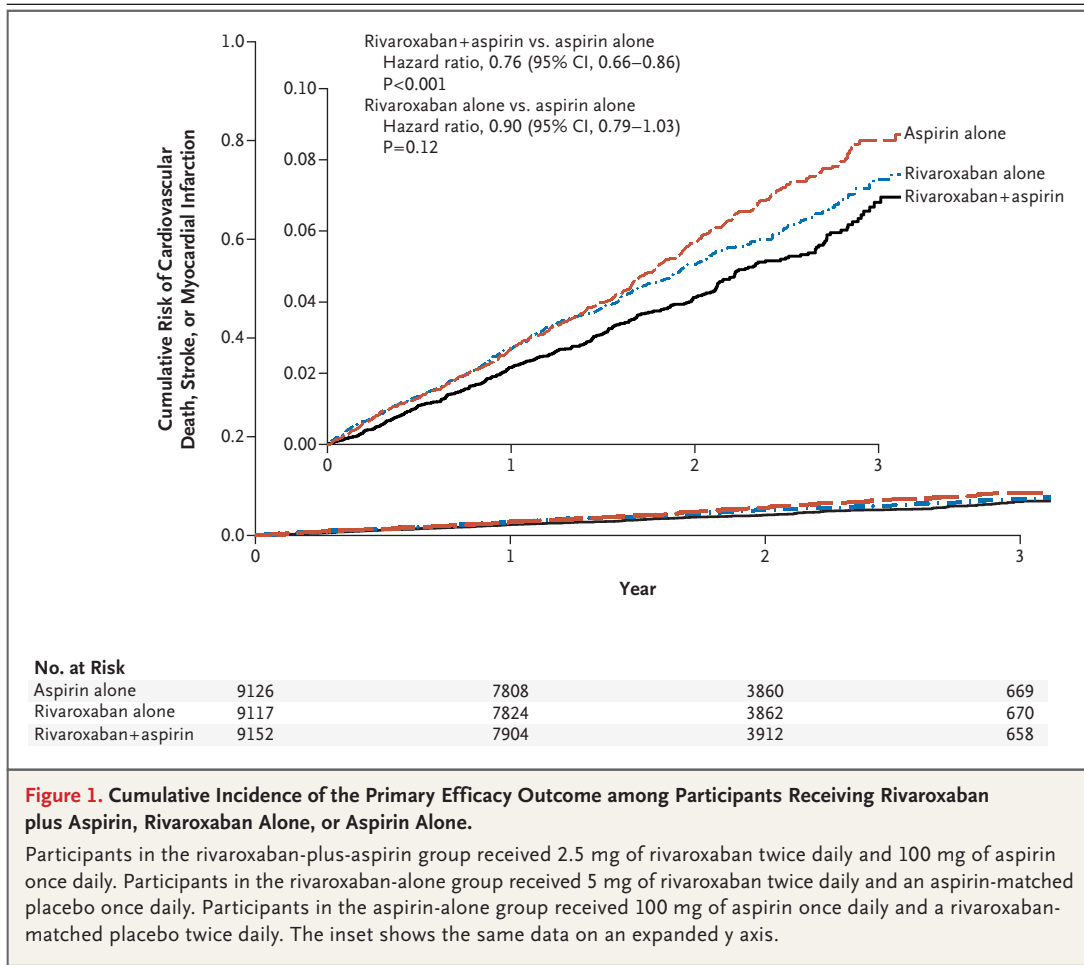
§ There was no adjustment for the testing of these outcomes.

¶ One participant in the rivaroxaban-alone group had more than one type of stroke. A total of 26 of the 392 participants who were reported to have atrial fibrillation had a stroke: 7 participants in the rivaroxaban-plus-aspirin group, 8 participants in the rivaroxaban-alone group, and 11 participants in the aspirin-alone group.

bleeding.^{3,14} Among patients with stable cardiovascular disease, those who received clopidogrel had a lower risk of major adverse cardiovascular events than those who received aspirin, but there was no significant difference in the risk of cardiovascular death or death from any cause.¹⁵ Among patients with symptomatic stable cardiovascular disease or multiple risk factors, the combination of clopidogrel and aspirin did not result in a significantly lower rate of major adverse cardiovascular events or death from any cause than aspirin alone.¹⁶ Among patients who had had myocardial infarction 1 to 3 years previously, the combination of ticagrelor and aspirin resulted in a lower rate of major adverse cardiovascular events and a higher rate of major bleed-

ing than aspirin alone, and there was no significant between-group difference in mortality.¹⁷ Among patients with stable peripheral arterial disease, ticagrelor did not result in a significantly lower rate of major adverse cardiovascular events than clopidogrel.¹⁸ Among patients with stable cardiovascular disease who were receiving single or dual antiplatelet therapy, vorapaxar resulted in a lower rate of major adverse cardiovascular events and a higher rate of moderate or severe bleeding than placebo, with no significant between-group difference in mortality.¹⁹

The potential benefit of rivaroxaban in patients with cardiovascular disease was previously evaluated in the Anti-Xa Therapy to Lower Cardiovascular Events in Addition to Standard Therapy



in Subjects with Acute Coronary Syndrome 2–Thrombolysis in Myocardial Infarction 51 (ATLAS ACS 2–TIMI 51) trial. This trial tested rivaroxaban on a background of single or dual antiplatelet therapy in patients with a recent acute coronary syndrome. Rivaroxaban at a dose of 2.5 mg twice daily or 5 mg twice daily resulted in a lower rate of major adverse cardiovascular events than placebo, and the dose of 2.5 mg twice daily resulted in lower mortality,⁸ findings consistent with the COMPASS results. The mean duration of rivaroxaban treatment in the ATLAS ACS 2–TIMI 51 trial was 13.3 months, whereas persons enrolled in the COMPASS trial who had a history of myocardial infarction were enrolled a mean of 7.1 years after the acute event and continued to receive treatment for a mean of 23 months.

The definition of major bleeding in the COMPASS trial was based on the ISTH definition, which includes fatal bleeding, symptomatic bleeding into a critical area or organ, bleeding

causing a decrease in the hemoglobin level of 2 g or more per deciliter, or bleeding that led to transfusion of 2 or more units of whole blood or red cells. However, the definition used in the COMPASS trial, which had been adopted in response to a request from regulators, differed from the ISTH definition in that it did not take into account whether bleeding was associated with a decrease in the hemoglobin level or with blood transfusion, and it included any bleeding that led to hospitalization with or without an overnight stay, thus including events that would not be considered major bleeding in other trials. Although there was also a significant increase in the rate of major bleeding with rivaroxaban with the use of the ISTH scale, there were approximately one third fewer major bleeding events with this definition than with the use of the modified ISTH definition. Our definition of net clinical benefit balanced the lower risk of cardiovascular death, stroke, or myocardial infarction against the most

Table 3. Bleeding Events and Net Clinical Benefit.*

| Outcome | Rivaroxaban plus Aspirin (N=9152) | Rivaroxaban Alone (N=9117) | Aspirin Alone (N=9126) | Rivaroxaban plus Aspirin vs. Aspirin Alone Hazard Ratio (95% CI) | P Value | Rivaroxaban Alone vs. Aspirin Alone Hazard Ratio (95% CI) | P Value |
|--|-----------------------------------|----------------------------|------------------------|--|---------|---|---------|
| <i>number (percent)</i> | | | | | | | |
| Major and minor bleeding | | | | | | | |
| Major bleeding | 288 (3.1) | 255 (2.8) | 170 (1.9) | 1.70 (1.40–2.05) | <0.001 | 1.51 (1.25–1.84) | <0.001 |
| Fatal bleeding† | 15 (0.2) | 14 (0.2) | 10 (0.1) | 1.49 (0.67–3.33) | 0.32 | 1.40 (0.62–3.15) | 0.41 |
| Nonfatal symptomatic ICH† | 21 (0.2) | 32 (0.4) | 19 (0.2) | 1.10 (0.59–2.04) | 0.77 | 1.69 (0.96–2.98) | 0.07 |
| Nonfatal, non-ICH, symptomatic bleeding into critical organ† | 42 (0.5) | 45 (0.5) | 29 (0.3) | 1.43 (0.89–2.29) | 0.14 | 1.57 (0.98–2.50) | 0.06 |
| Other major bleeding† | 210 (2.3) | 164 (1.8) | 112 (1.2) | 1.88 (1.49–2.36) | <0.001 | 1.47 (1.16–1.87) | 0.001 |
| Fatal bleeding or symptomatic ICH | 36 (0.4) | 46 (0.5) | 29 (0.3) | 1.23 (0.76–2.01) | 0.40 | 1.59 (1.00–2.53) | 0.05 |
| Fatal bleeding or symptomatic bleeding into critical organ | 78 (0.9) | 91 (1.0) | 58 (0.6) | 1.34 (0.95–1.88) | 0.09 | 1.58 (1.13–2.19) | 0.006 |
| Major bleeding according to ISTH criteria | 206 (2.3) | 175 (1.9) | 116 (1.3) | 1.78 (1.41–2.23) | <0.001 | 1.52 (1.20–1.92) | <0.001 |
| Transfusion within 48 hr after bleeding | 87 (1.0) | 66 (0.7) | 44 (0.5) | 1.97 (1.37–2.83) | <0.001 | 1.50 (1.03–2.20) | 0.03 |
| Minor bleeding | 838 (9.2) | 741 (8.1) | 503 (5.5) | 1.70 (1.52–1.90) | <0.001 | 1.50 (1.34–1.68) | <0.001 |
| Site of major bleeding | | | | | | | |
| Gastrointestinal | 140 (1.5) | 91 (1.0) | 65 (0.7) | 2.15 (1.60–2.89) | <0.001 | 1.40 (1.02–1.93) | 0.04 |
| Intracranial | 28 (0.3) | 43 (0.5) | 24 (0.3) | 1.16 (0.67–2.00) | 0.60 | 1.80 (1.09–2.96) | 0.02 |
| Skin or injection site | 28 (0.3) | 28 (0.3) | 12 (0.1) | 2.31 (1.18–4.54) | 0.01 | 2.34 (1.19–4.60) | 0.01 |
| Urinary | 13 (0.1) | 30 (0.3) | 21 (0.2) | 0.61 (0.31–1.23) | 0.16 | 1.43 (0.82–2.50) | 0.20 |
| Net-clinical-benefit outcome: CV death, stroke, myocardial infarction, fatal bleeding, or symptomatic bleeding into critical organ | 431 (4.7) | 504 (5.5) | 534 (5.9) | 0.80 (0.70–0.91) | <0.001 | 0.94 (0.84–1.07) | 0.36 |

* ICH denotes intracranial hemorrhage, and ISTH International Society on Thrombosis and Haemostasis.

† If a participant had more than one event of major bleeding, only the most serious bleeding event was counted in these analyses.

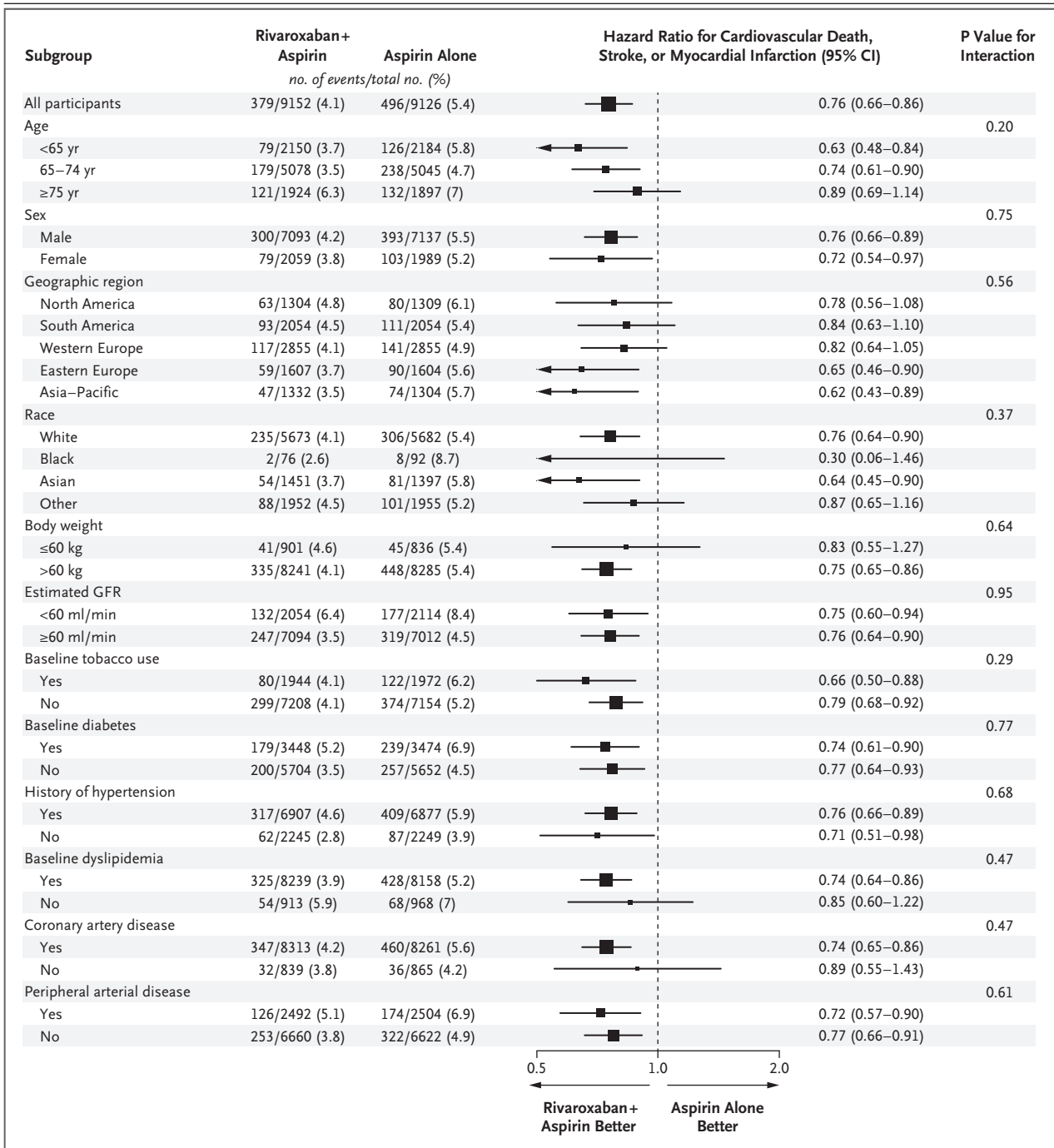


Figure 2. Subgroup Analyses for the Primary Outcome for the Comparison of Rivaroxaban plus Aspirin with Aspirin Alone. The size of each box is proportional to the number of events. Arrows indicate that the limits of the confidence interval are not shown. The subgroup labeled “Western Europe” also includes participants in Israel, Australia, and South Africa. GFR denotes glomerular filtration rate.

serious bleeding events and showed a significant benefit of combination therapy.

There are a few limitations of the trial that should be considered. First, we did not specifically study patients with a previous stroke. How-

ever, of those enrolled, 1032 also had a history of stroke, and the benefits of the combination of rivaroxaban and aspirin in preventing cardiovascular death, stroke, or myocardial infarction were consistent in these patients. Furthermore, the

combination of rivaroxaban and aspirin resulted in a lower rate of ischemic stroke than aspirin alone. Second, although the majority of patients were receiving proven secondary prevention therapies, and the blood pressure and total cholesterol levels were serially recorded during the study, we did not specifically record statin use or low-density lipoprotein cholesterol levels at baseline, and the trial protocol did not specifically emphasize aggressive use of secondary prevention therapies to lower blood pressure and cholesterol levels. However, the results were consistent in patients with baseline blood pressure below or above the mean and in those with baseline cholesterol levels below or above the median, supporting the conclusion that the benefits of combination therapy are additive to those of other proven secondary preventive therapies. Third, trials that are stopped early for efficacy may overestimate the treatment effect. However, before the time of stopping, the data and safety monitoring board had observed a progressive increase in benefit of the combination of rivaroxaban and aspirin for more than 1 year. Furthermore, the data reported here include additional events that occurred before the cutoff but were not reported at the time of stopping the study and exclude some events that were refuted during adjudication. It is noteworthy that the results based on events reported by the sites and after adjudication are nearly identical (Table S3 in the Supplementary Appendix).

In conclusion, in patients with stable atherosclerotic vascular disease, we compared three antiplatelet regimens: rivaroxaban (2.5 mg twice daily) plus aspirin (100 mg once daily), rivaroxaban (5 mg twice daily), and aspirin (100 mg once daily). The risk of major adverse cardiovascular events was significantly lower with the combination of rivaroxaban plus aspirin than with aspirin alone, and the risk of major bleeding was significantly higher. Rivaroxaban alone did not result in a significantly lower risk of major adverse cardiovascular events than aspirin alone and resulted in a significantly higher risk of major bleeding.

Supported by Bayer.

Dr. Eikelboom reports receiving grant support and honoraria from Bayer, Boehringer Ingelheim, Bristol-Myers Squibb/Pfizer, Daiichi Sankyo, Janssen, AstraZeneca, Eli Lilly, GlaxoSmithKline, and Sanofi-Aventis; Dr. Connolly, receiving lecture fees and consulting fees from Bristol-Myers Squibb, Pfizer, Portola Pharmaceuticals, Boehringer Ingelheim, Servier, Daiichi Sankyo, and Medtronic; Dr. Hart, receiving grant support, fees for serving as principal investigator of the Rivaroxaban versus Aspirin in Sec-

ondary Prevention of Stroke and Prevention of Systemic Embolism in Patients with Recent Embolic Stroke of Undetermined Source (NAVIGATE ESUS) trial, and advisory-board fees from Bayer; Dr. Diaz, receiving grant support from the Population Health Research Institute; Dr. Alings, receiving consulting fees from Boehringer Ingelheim, Bristol-Myers Squibb, Daiichi Sankyo, Pfizer, and Sanofi-Aventis; Dr. Lonn, receiving consulting fees from Bayer, Amgen, Sanofi, Novartis, and Servier; Dr. Anand, receiving consulting fees and lecture fees from Bayer and Novartis; Dr. Avezum, receiving consulting fees from Boehringer Ingelheim; Dr. Branch, receiving grant support from Astellas and serving on an advisory board for Janssen; Dr. Bhatt, receiving grant support from Amarin, AstraZeneca, Bristol-Myers Squibb, Eisai, Ethicon, Medtronic, Sanofi-Aventis, the Medicines Company, Roche, Pfizer, Forest Laboratories/AstraZeneca, Ischemix, Amgen, Eli Lilly, Chiesi, and Ironwood Pharmaceuticals, collaborating on research (uncompensated) with FlowCo, PLx Pharma, Takeda, and Merck, receiving fees for serving on data monitoring committees, an operations committee, a publications committee (USA co-national leader), and a steering committee from the Population Health Research Institute, serving as editor-in-chief of the *Harvard Heart Letter* for Belvoir Publications, serving as chief medical editor of *Cardiology Today's Intervention* for Slack Publications, receiving fees for serving on continuing medical education steering committees from WebMD, receiving advisory-board fees from Elsevier, serving on uncompensated advisory boards for Medscape Cardiology and Regado Biosciences, serving as editor-in-chief of the *Journal of Invasive Cardiology* for HMP Communications, serving as deputy editor for *Clinical Cardiology*, serving as guest editor and associate editor for the *Journal of the American College of Cardiology*, serving as chair of the research and publications committee of the Veterans Affairs Cardiovascular Assessment, Reporting, and Tracking system for the Department of Veterans Affairs, serving as site coinvestigator for Biotronik and Boston Scientific, serving on an uncompensated advisory board for Cardax, and receiving fees for serving on data monitoring committees from the Cleveland Clinic, Duke University, and Mount Sinai School of Medicine; Dr. Zhu, receiving lecture fees from Bayer, Boehringer Ingelheim, and Sanofi; Dr. Liang, receiving lecture fees from Bayer, Boehringer Ingelheim, and Sanofi; Dr. Maggioni, receiving fees for serving as a study committee member from Novartis, Bayer, Fresenius Medical Care, and Cardiorentis; Dr. Kakkar, receiving grant support and fees for serving as steering committee chairman from Bayer, and consulting fees from Boehringer Ingelheim, Daiichi Sankyo Europe, Janssen, Sanofi, and Armethreon; Dr. Fox, receiving grant support and honoraria from AstraZeneca and honoraria from Sanofi/Regeneron Pharmaceuticals; Dr. Parkhomenko, receiving grant support and honoraria from Pfizer, Bayer, Janssen, AstraZeneca, Sanofi, and Merck Sharp & Dohme; Dr. Störk, receiving grant support from Servier and Boehringer Ingelheim, grant support and lecture fees from Novartis and Thermo Fisher Scientific, and lecture fees from Pfizer; Dr. Ryden, receiving grant support from Amgen and Bayer, grant support, fees for serving on expert committees, and lecture fees from Boehringer Ingelheim and Novo Nordisk, and lecture fees from Merck Sharp & Dohme; Dr. Dans, receiving lecture fees from Pfizer and Boehringer Ingelheim; Dr. Torp-Pedersen, receiving grant support from Biotronik; Dr. Verhamme, receiving grant support, lecture fees, and consulting fees from Bayer HealthCare, Boehringer Ingelheim, Daiichi Sankyo, Pfizer, and Bristol-Myers Squibb, grant support from Sanofi and Leo Pharma, and consulting fees from Portola Pharmaceuticals; Dr. Vinereanu, receiving grant support, lecture fees, and consulting fees from Boehringer Ingelheim, Pfizer, and Novartis and grant support and lecture fees from Servier; Dr. Lewis, receiving lecture fees and honoraria from Pfizer/Bristol-Myers Squibb; Dr. Steg, receiving fees for serving on a steering committee from Amarin, Janssen, and CSL Behring, fees for serving on a steering committee and lecture fees from AstraZeneca, lecture fees and consulting fees from Bayer and Bristol-Myers Squibb, fees for preparation of educational material from Boehringer Ingelheim, consulting fees and fees for

serving on a data and safety monitoring board from Eli Lilly and Merck Sharp & Dohme, consulting fees from Novartis and Regeneron Pharmaceuticals, fees for serving on a critical-event committee from Pfizer, fees for serving on a steering committee and consulting fees from Sanofi, and fees for serving on a steering committee, consulting fees, and fees for serving on a data and safety monitoring board from Servier; Dr. Cook Bruns, being employed by Bayer; Dr. Misselwitz, being employed by and being a

shareholder of Bayer and holding a patent (US 9539218 B2 and EP 1845961 B1) on the once-daily use of rivaroxaban; Dr. Chen, being employed by Bayer HealthCare; and Dr. Yusuf, receiving grant support and honoraria from Bayer, Boehringer Ingelheim, AstraZeneca, Bristol-Myers Squibb, and Cadila Pharmaceuticals. No other potential conflict of interest relevant to this article was reported.

Disclosure forms provided by the authors are available with the full text of this article at NEJM.org.

APPENDIX

The authors' full names and academic degrees are as follows: John W. Eikelboom, M.B., B.S., Stuart J. Connolly, M.D., Jackie Bosch, Ph.D., Gilles R. Dagenais, M.D., Robert G. Hart, M.D., Olga Shestakovska, M.Sc., Rafael Diaz, M.D., Marco Alings, Ph.D., Eva M. Lonn, M.D., Sonia S. Anand, M.D., Petr Widimsky, M.D., Masatsugu Hori, M.D., Alvaro Avezum, Ph.D., Leopoldo S. Piegas, M.D., Kelley R.H. Branch, M.D., Jeffrey Probstfeld, M.D., Deepak L. Bhatt, M.D., Jun Zhu, M.D., Yan Liang, M.D., Aldo P. Maggioni, M.D., Patricio Lopez-Jaramillo, Ph.D., Martin O'Donnell, Ph.D., Ajay K. Kakkar, M.B., B.S., Keith A.A. Fox, M.B., Ch.B., Alexander N. Parkhomenko, Ph.D., Georg Ertl, M.D., Stefan Störk, M.D., Matyas Keltai, M.D., Lars Ryden, M.D., Nana Pogossova, Ph.D., Antonio L. Dans, M.D., Fernando Lanas, Ph.D., Patrick J. Commerford, M.B., Ch.B., Christian Torp-Pedersen, M.D., Tomek J. Guzik, Ph.D., Peter B. Verhamme, M.D., Dragos Vinereanu, Ph.D., Jae-Hyung Kim, Ph.D., Andrew M. Tonkin, M.D., Basil S. Lewis, M.D., Camilo Felix, M.D., Khalid Yusuf, M.B., B.S., P. Gabriel Steg, M.D., Kaj P. Metsarinne, Ph.D., Nancy Cook Bruns, M.D., Frank Misselwitz, M.D., Edmond Chen, M.D., Darryl Leong, M.B., B.S., and Salim Yusuf, D.Phil.

The authors' affiliations are as follows: the Population Health Research Institute, McMaster University and Hamilton Health Sciences, Hamilton, ON (J.W.E., S.J.C., J.B., R.G.H., O.S., E.M.L., S.S.A., D.L., S.Y.), and Institut Universitaire de Cardiologie et de Pneumologie de Québec, Québec, QC (G.R.D.) — both in Canada; Estudios Clínicos Latino América and Instituto Cardiovascular de Rosario, Rosario, Argentina (R.D.); Amphia Ziekenhuis and Werkgroep Cardiologische Centra Nederland (WCN), Utrecht, the Netherlands (M.A.); Cardiocenter, University Hospital Kralovske Vinohrady and Third Faculty of Medicine, Charles University, Prague, Czech Republic (P.W.); Osaka International Cancer Institute, Osaka, Japan (M.H.); Instituto Dante Pazzanese de Cardiologia (A.A.), and Hospital do Coração (L.S.P.), São Paulo; University of Washington Medical Center (K.R.H.B.) and University of Washington (J.P.), Seattle; Brigham and Women's Hospital Heart and Vascular Center, Harvard Medical School, Boston (D.L.B.); FuWai Hospital, Beijing (J.Z., Y.L.); National Association of Hospital Cardiologists Research Center (ANMCO), Florence, Italy (A.P.M.); Research Institute, Fundación Oftalmológica de Santander (FOSCAL)—Bucaramanga, Bucaramanga, Colombia (P.L.-J.); National University of Ireland, Galway (M.O.); Thrombosis Research Institute and University College London, London (A.K.K.), Centre for Cardiovascular Science, University of Edinburgh, Edinburgh (K.A.A.F.), and University of Glasgow, Glasgow (T.J.G.) — all in the United Kingdom; Collegium Medicum Jagiellonian University, Krakow, Poland (T.J.G.); Institute of Cardiology, Kiev, Ukraine (A.N.P.); University of Würzburg and University Hospital, Würzburg (G.E., S.S.), and Bayer, Leverkusen (N.C.B., F.M., E.C.) — all in Germany; Semmelweis University, Budapest, Hungary (M.K.); Karolinska Institutet, Stockholm (L.R.); National Research Center for Preventative Medicine, Moscow (N.P.); University of Philippines, Manila (A.L.D.); Universidad de La Frontera, Temuco, Chile (F.L.); University of Cape Town, Cape Town, South Africa (P.J.C.); University of Aalborg, Copenhagen (C.T.-P.); University of Leuven, Leuven, Belgium (P.B.V.); University of Medicine and Pharmacology, Carol Davila University and Emergency Hospital, Bucharest, Romania (D.V.); Catholic University of Korea, Seoul, South Korea (J.-H.K.); Monash University, Melbourne, VIC, Australia (A.M.T.); Lady Davis Carmel Medical Center, Haifa, Israel (B.S.L.); Facultad de Ciencias de la Salud Eugenio Espejo—Universidad Tecnológica Equinoccial, Quito, Ecuador (C.F.); Universiti Teknologi Mara, Selangor, Malaysia (K.Y.); Université Paris Diderot, Hôpital Bichat, Assistance Publique—Hôpitaux de Paris, Paris (P.G.S.); and Turku University Central Hospital and Turku University, Turku, Finland (K.P.M.).

REFERENCES

- Bhatt DL, Eagle KA, Ohman EM, et al. Comparative determinants of 4-year cardiovascular event rates in stable outpatients at risk of or with atherothrombosis. *JAMA* 2010;304:1350-7.
- Antithrombotic Trialists' (ATT) Collaboration. Aspirin in the primary and secondary prevention of vascular disease: collaborative meta-analysis of individual participant data from randomised trials. *Lancet* 2009;373:1849-60.
- Anand SS, Yusuf S. Oral anticoagulants in patients with coronary artery disease. *J Am Coll Cardiol* 2003;41:Suppl S:62S-69S.
- Turpie AG, Lassen MR, Eriksson BI, et al. Rivaroxaban for the prevention of venous thromboembolism after hip or knee arthroplasty: pooled analysis of four studies. *Thromb Haemost* 2011;105:444-53.
- The EINSTEIN-PE Investigators. Oral rivaroxaban for the treatment of symptomatic pulmonary embolism. *N Engl J Med* 2012;366:1287-97.
- The EINSTEIN Investigators. Oral rivaroxaban for symptomatic venous thromboembolism. *N Engl J Med* 2010;363:2499-510.
- Patel MR, Mahaffey KW, Garg J, et al. Rivaroxaban versus warfarin in nonvalvular atrial fibrillation. *N Engl J Med* 2011;365:883-91.
- Mega JL, Braunwald E, Wiviott SD, et al. Rivaroxaban in patients with a recent acute coronary syndrome. *N Engl J Med* 2012;366:9-19.
- Bosch J, Eikelboom JW, Connolly SJ, et al. Rationale, design and baseline characteristics of participants in the Cardiovascular Outcomes for People Using Anti-coagulation Strategies (COMPASS) trial. *Can J Cardiol* 2017;33:1027-35.
- Schulman S, Kearon C. Definition of major bleeding in clinical investigations of antihemostatic medicinal products in non-surgical patients. *J Thromb Haemost* 2005;3:692-4.
- Brechenmacher T, Xu J, Dmitrienko A, Tamhane AC. A mixture gatekeeping procedure based on the Hommel test for clinical trial applications. *J Biopharm Stat* 2011;21:748-67.
- Connolly SJ, Eikelboom JW, Bosch J, et al. Randomized trial of rivaroxaban in stable coronary artery disease. *Lancet* (in press).
- Anand SS, Bosch J, Eikelboom JW, et al. Rivaroxaban in patients with stable peripheral or carotid artery disease: an international randomized, double-blind, placebo-controlled trial. *Lancet* (in press).
- The Warfarin Antiplatelet Vascular Evaluation Trial Investigators. Oral anti-coagulant and antiplatelet therapy and peripheral arterial disease. *N Engl J Med* 2007;357:217-27.
- CAPRIE Steering Committee. A randomized, blinded, trial of clopidogrel versus aspirin in patients at risk of ischaemic events (CAPRIE). *Lancet* 1996;348:1329-39.
- Bhatt DL, Fox KAA, Hacke W, et al. Clopidogrel and aspirin versus aspirin alone for the prevention of atherothrombotic events. *N Engl J Med* 2006;354:1706-17.
- Bonaca MP, Bhatt DL, Cohen M, et al. Long-term use of ticagrelor in patients with prior myocardial infarction. *N Engl J Med* 2015;372:1791-800.
- Hiatt WR, Fowkes FGR, Heizer G, et al. Ticagrelor versus clopidogrel in symptomatic peripheral artery disease. *N Engl J Med* 2017;376:32-40.
- Morrow DA, Braunwald E, Bonaca MP, et al. Vorapaxar in the secondary prevention of atherothrombotic events. *N Engl J Med* 2012;366:1404-13.

Copyright © 2017 Massachusetts Medical Society.