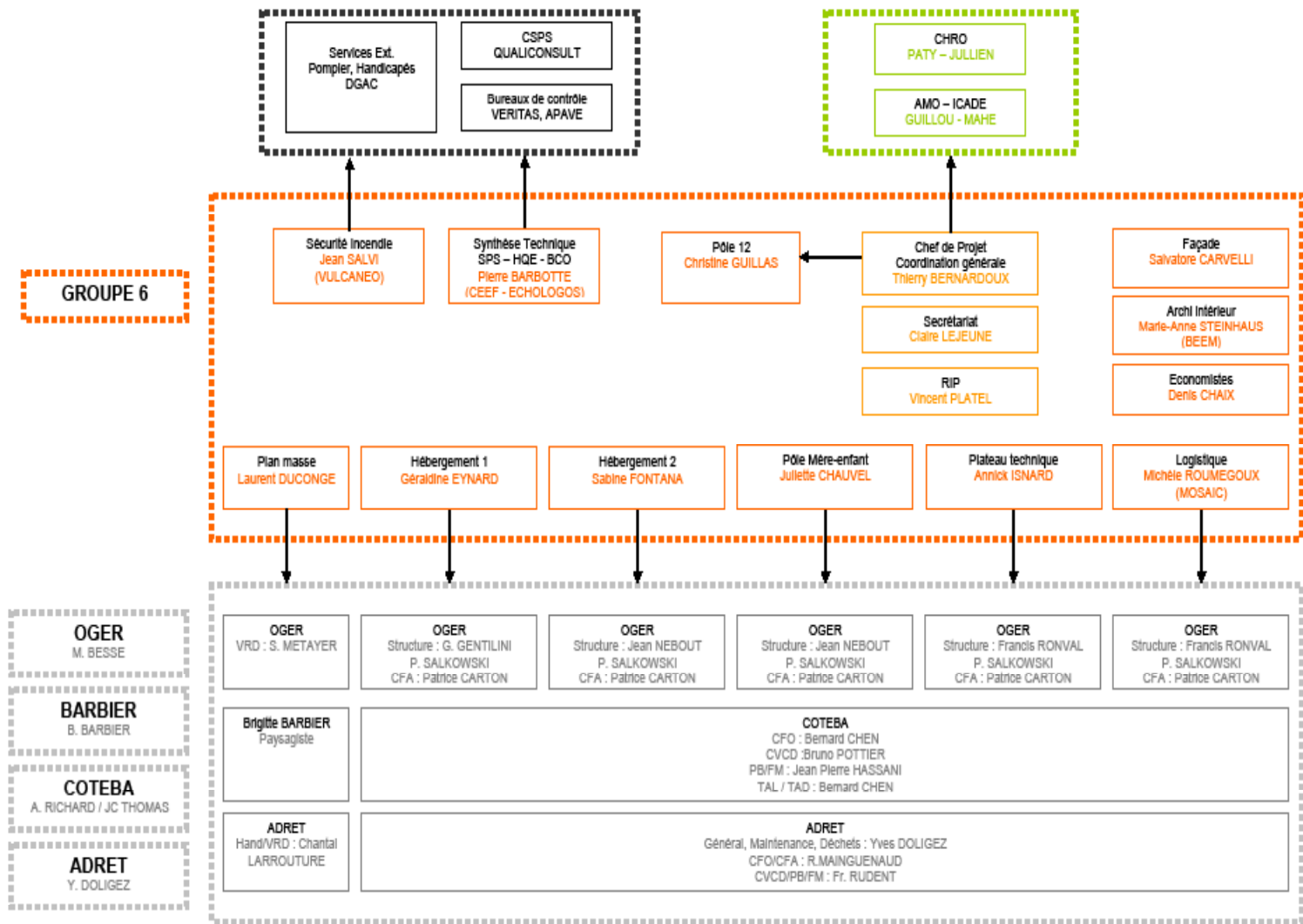
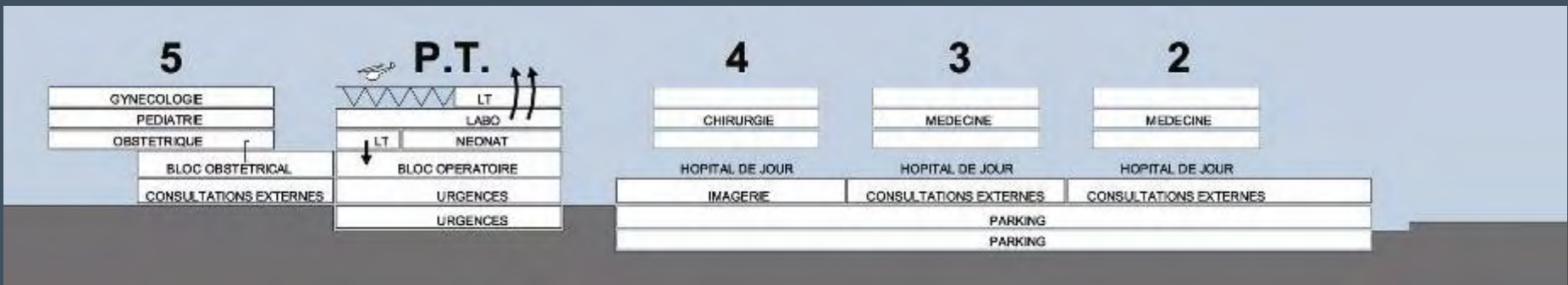




CENTRE HOSPITALIER REGIONAL D'ORLEANS



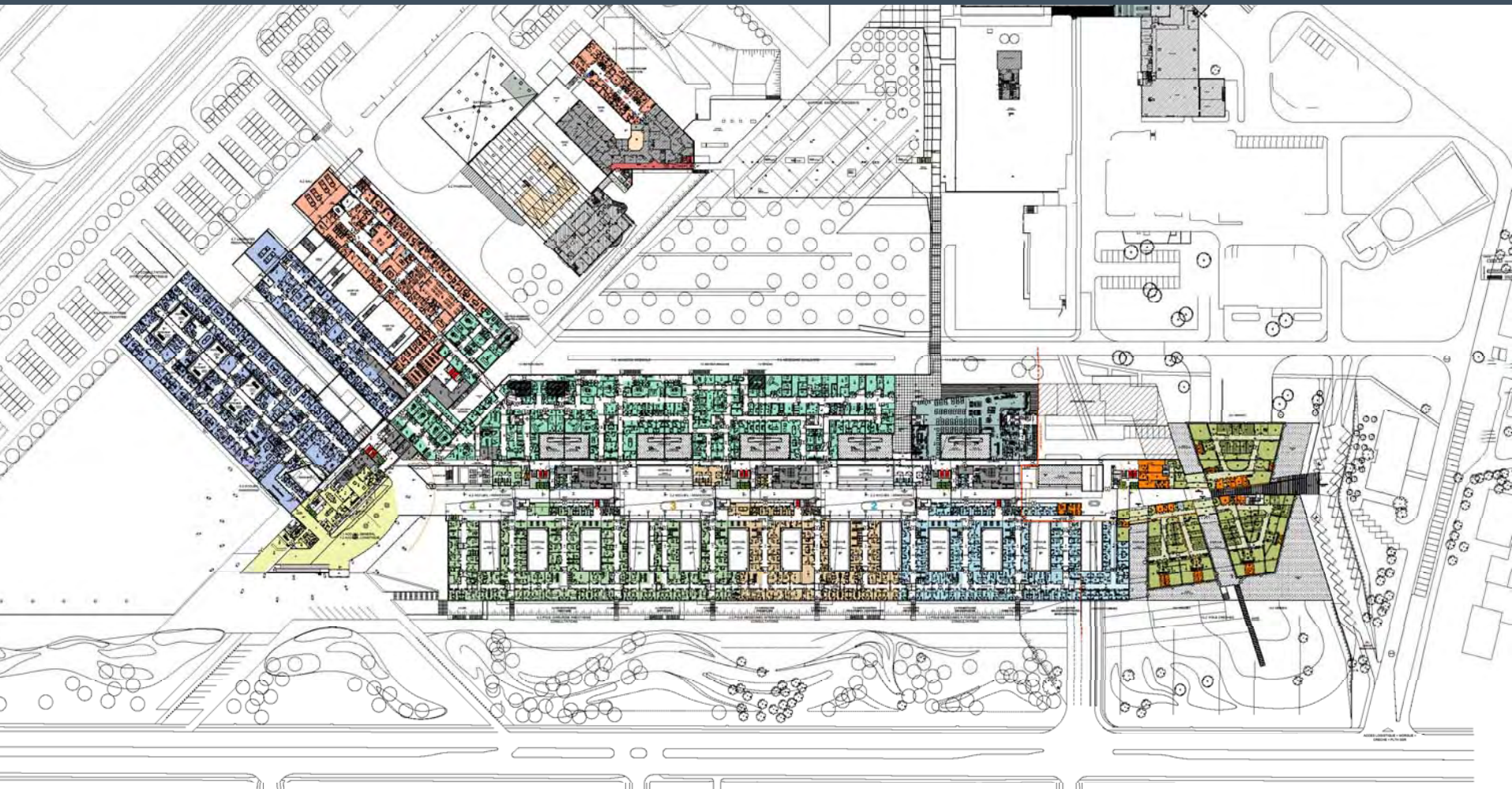








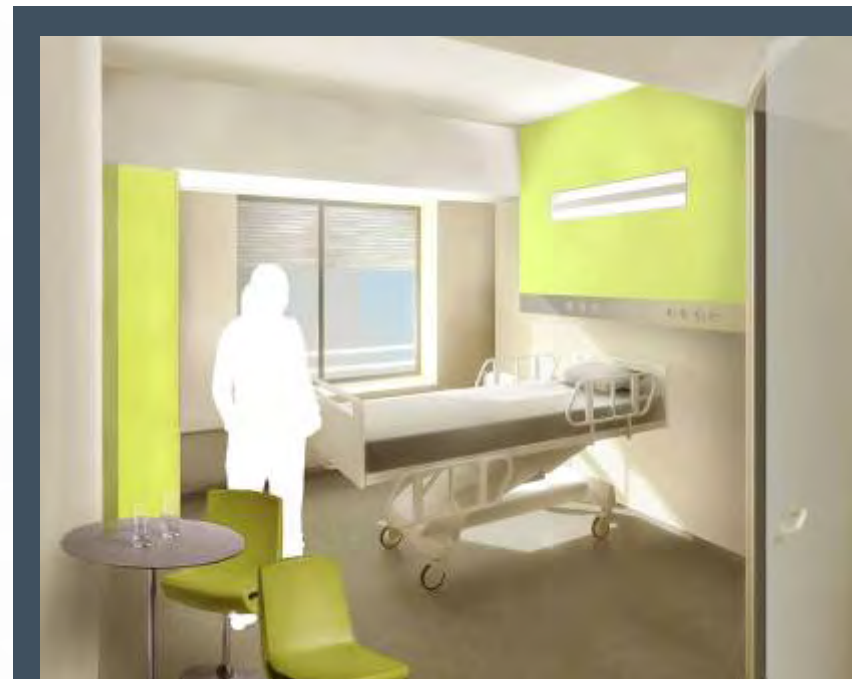
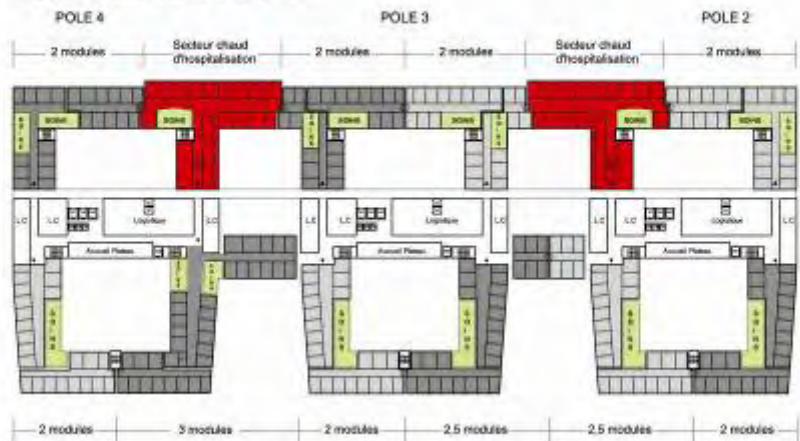
CENTRE HOSPITALIER REGIONAL D'ORLEANS



A- Configuration générale (secteurs de 24 lits)  
 Identification des zones modulables



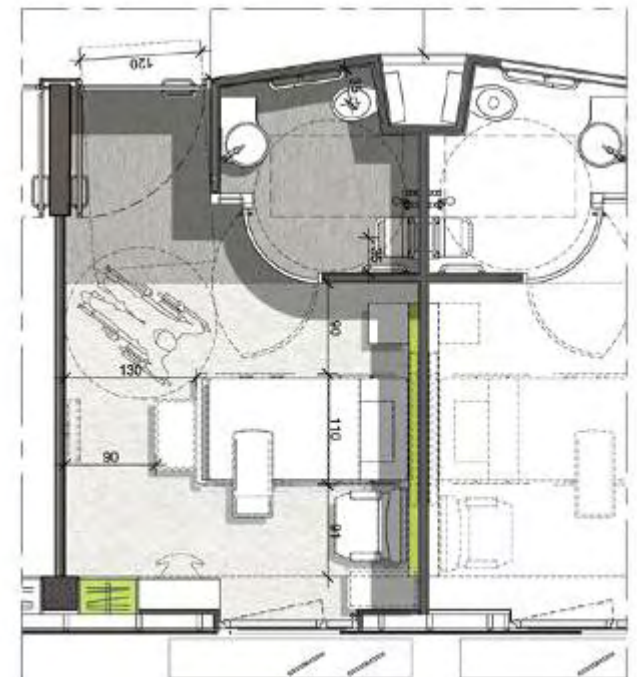
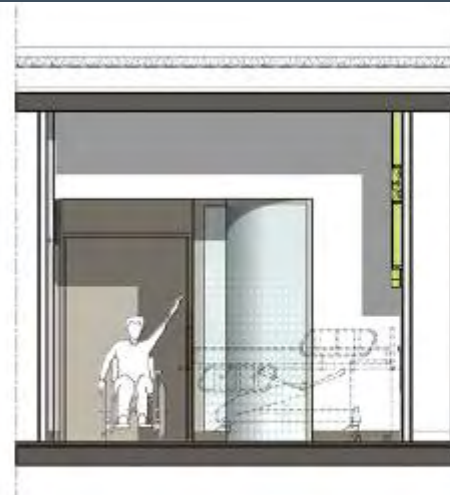
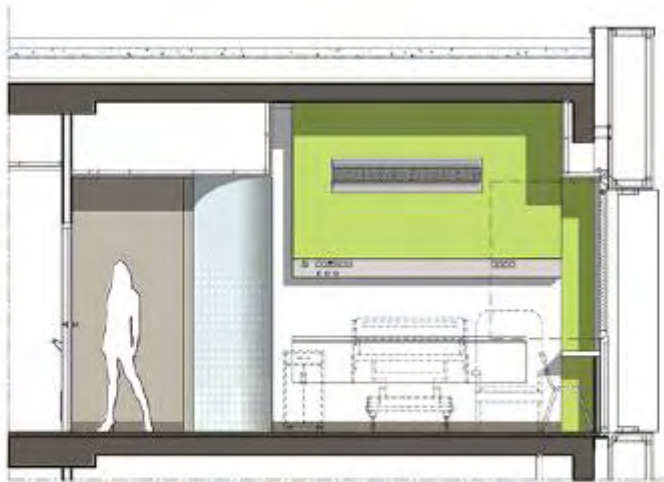
B- Application de la Modularité  
 Intégration des secteurs chauds d'hospitalisation

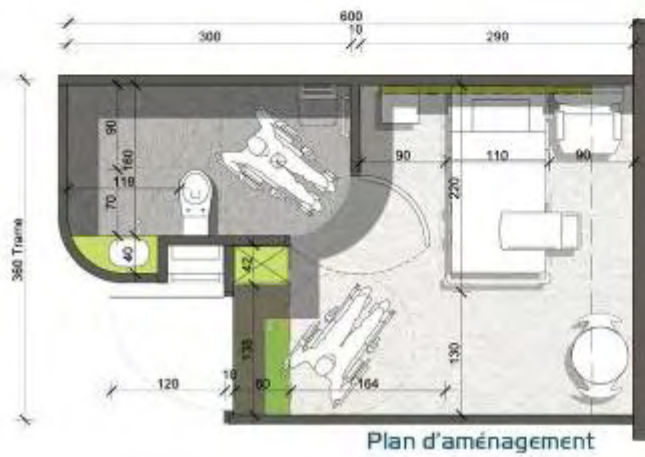
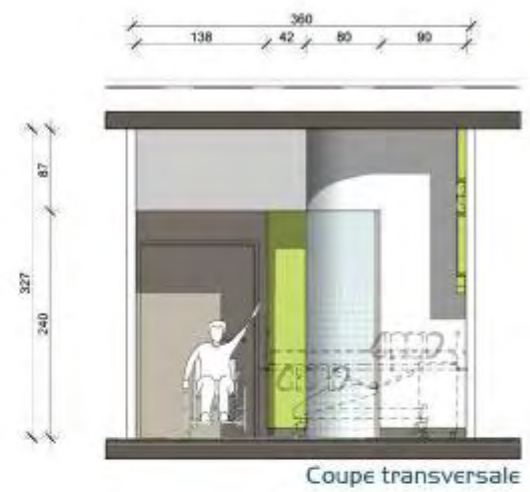
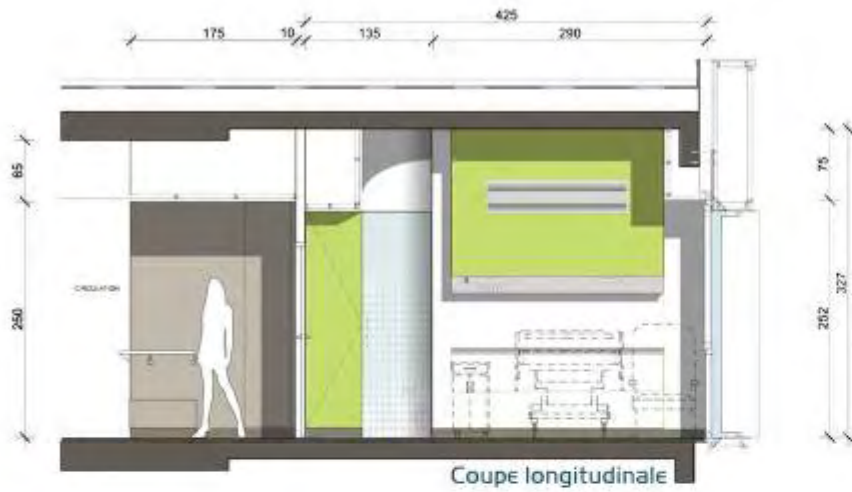














CENTRE HOSPITALIER REGIONAL D'ORLEANS