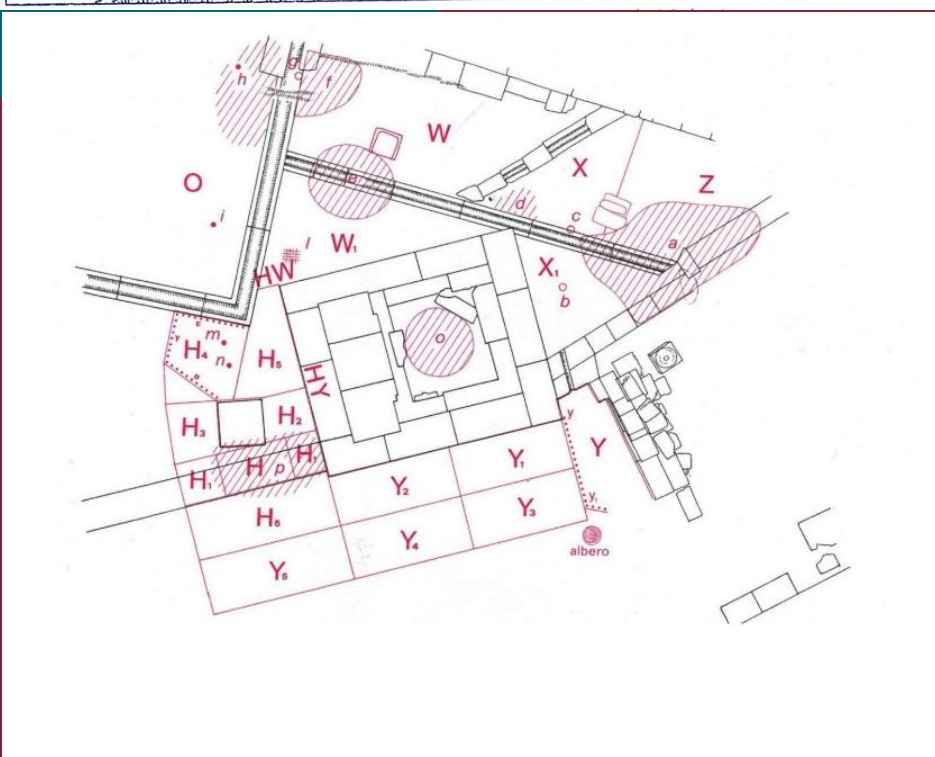
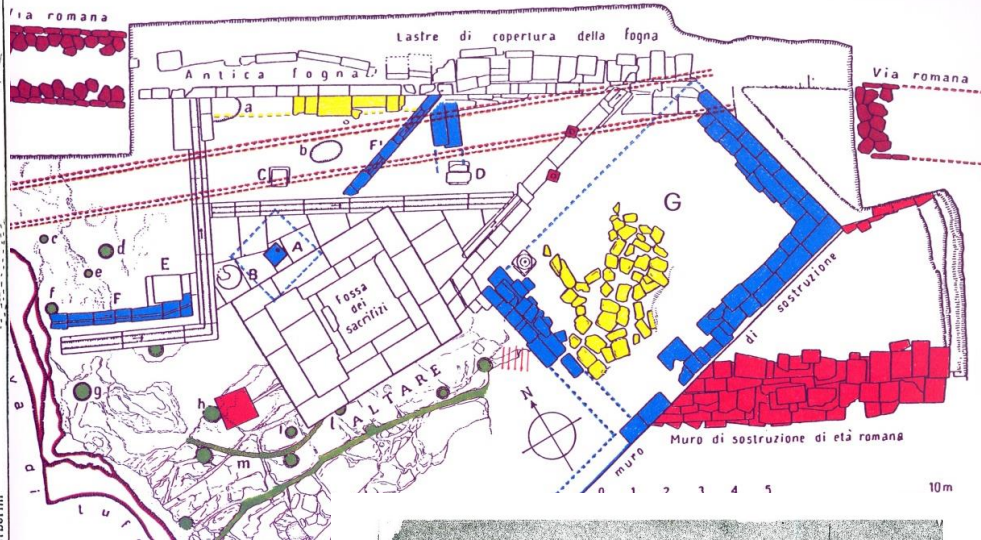
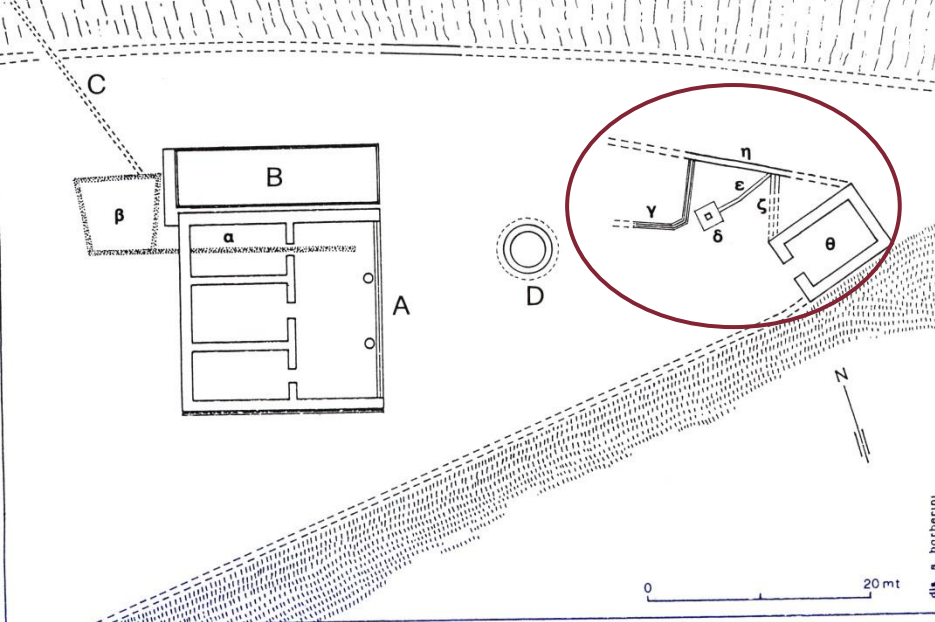


Il santuario di Portonaccio a Veio. Le offerte e i culti



SAPIENZA
UNIVERSITÀ DI ROMA





Il deposito votivo nel settore orientale del santuario

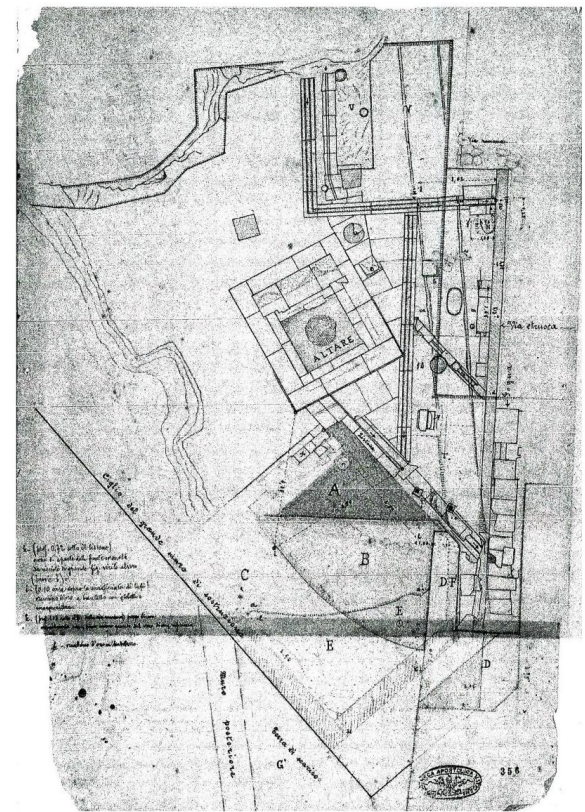
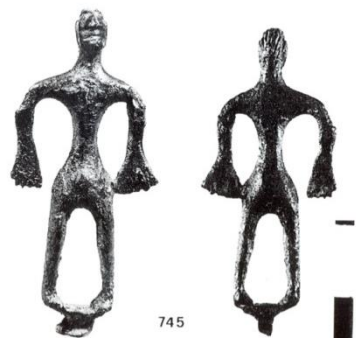


Fig. 27. Pianta della zona dell'altare con indicazione dei settori indagati da M. Pallottino tra il 1939 ed il 1940 (da COLONNA et alii 2002).

Fig. 26. Lucido con i principali interventi effettuati da Stefani nella "Regione dell'altare" tra il maggio e l'agosto del 1920.

La più antica plastica votiva

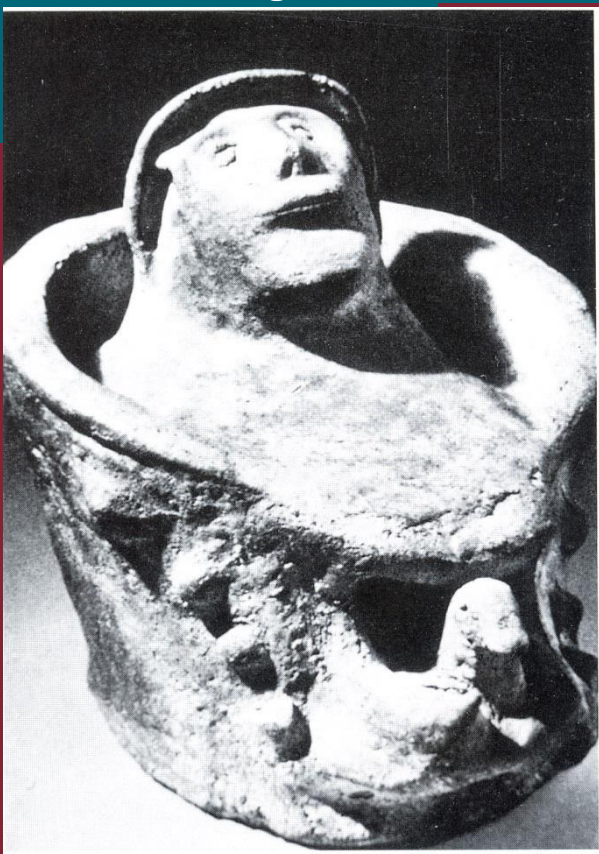


745

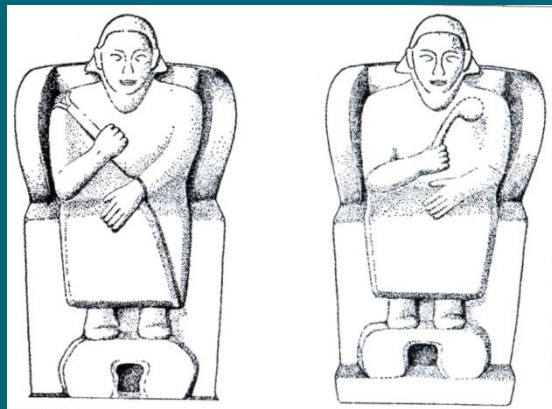
bronzetto
subgeometrico

statuetta di signore in trono con il cane

testa «canopica» con foro superiore
forse per l'inserimento di una maschera

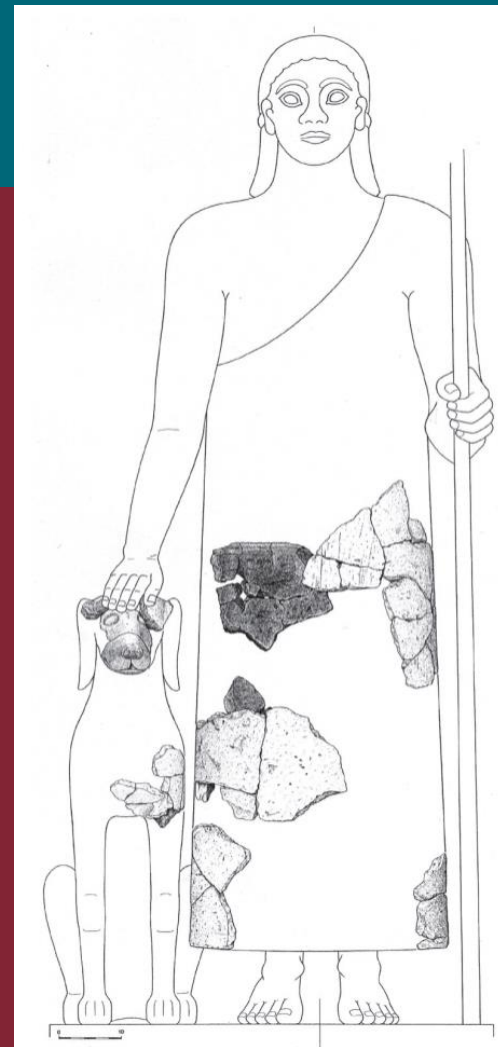
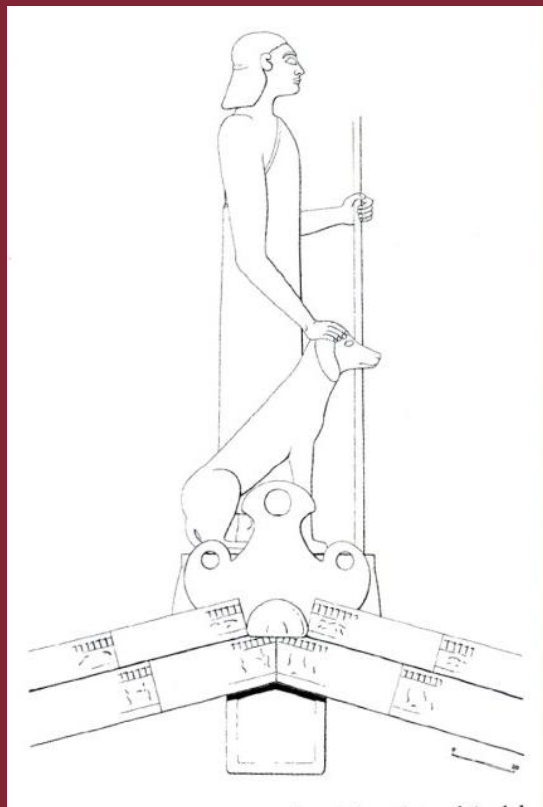
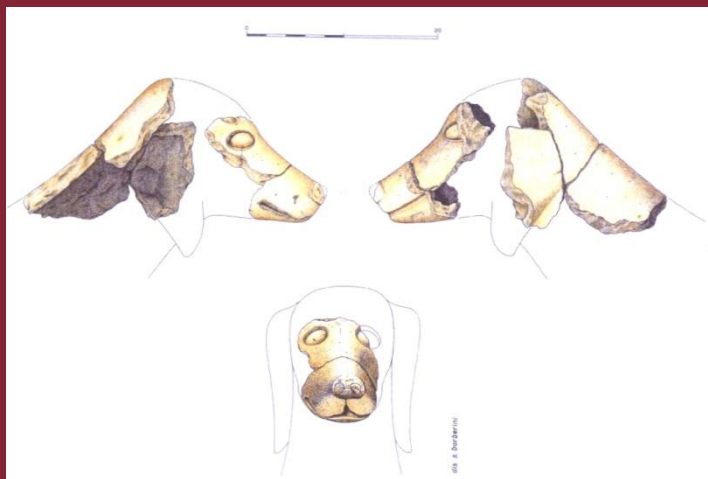


L'iconografia del «signore» a Veio (prima metà VI sec. a.C.)

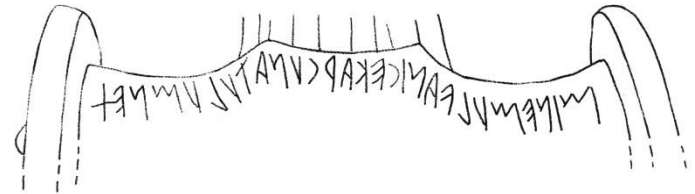


gruppo acroteriale di signore con il cane
da Piazza d'Armi; ipotesi ricostruttiva
(da Bartoloni 2012)

frammento di statua di signore in trono da
Picazzano; accanto, il confronto con le statue
di Ceri (da Colonna – von Hase 1984)



Buccheri «monumentali» dal santuario di Portonaccio



CIE 6454



da Colonna et al. 2002

MINIMYLVKAMICEWAMAPCEAPYMHFFRYALA

mini mulvanice mama.r.ce .a.puniie venala



CIE 6421



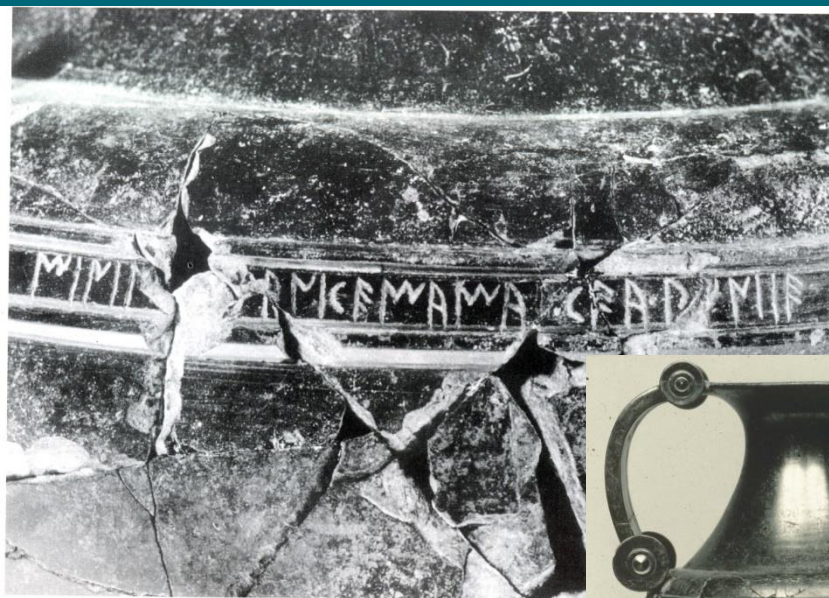
Scambio di doni e circolazione di prodotti: Veio e Lavinium

MIMIA AMCEMAMAR.CE.A.PYMIIE

mini m[uluv]anice mamar.ce a.puniie

MIMIMYLVFAMICEMAMAPCE.A.PYMIIEFFMALA

mini muluvanice mama.r.ce .a.puniie venala



**Iscrizione CIE 8612,
su anfora
di bucchero da tomba
di Lavinium**



**Iscrizione CIE 6421, su oinochoe
di bucchero da Veio-Portonaccio**



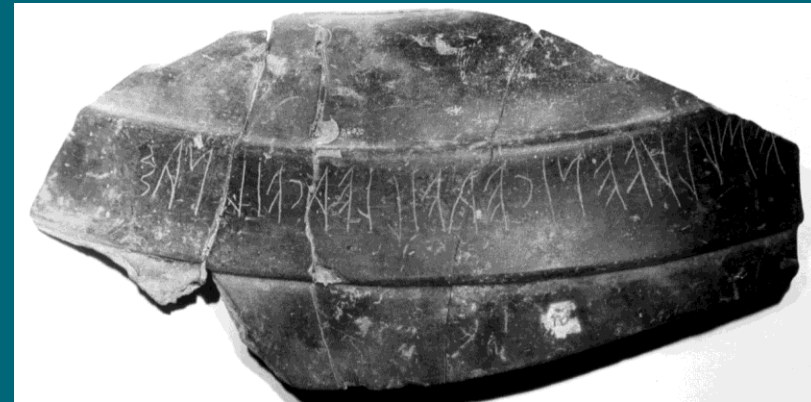
Scambio di doni e circolazione di prodotti: Veio e Vulci



Vulci, Castro, due oinochoai di bucchero
(prima metà del VI secolo a.C.)

mine muluvenice a:v[ile a:cvil:]nas:

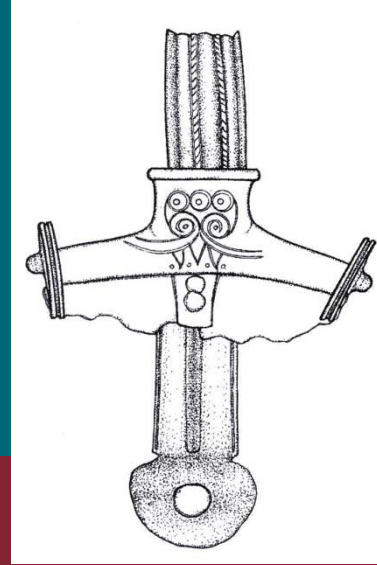
mine muluvene a:vile a:cvil:nas:



Veio, Portonaccio, oinochoe di bucchero
(prima metà del VI secolo a.C.)

[min]e mulvenice a:ville a:cvil:nas:

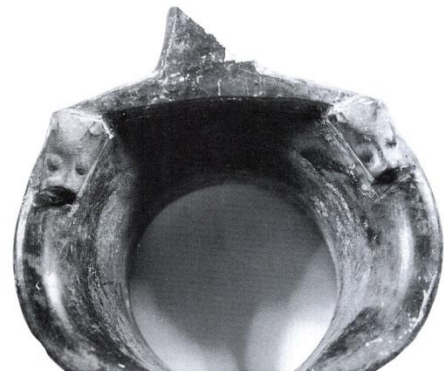
Buccheri «monumentali» dal santuario di Portonaccio



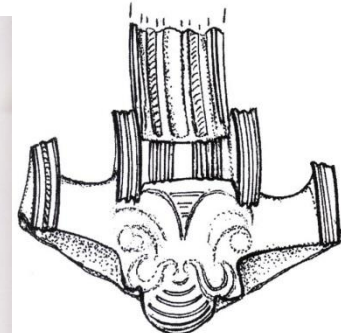
*oinochoi di
bucchero*



oinochoi «rodie» (da Shefton 1979 e 2009)



A
MA



Buccheri «monumentali» dal santuario di Portonaccio



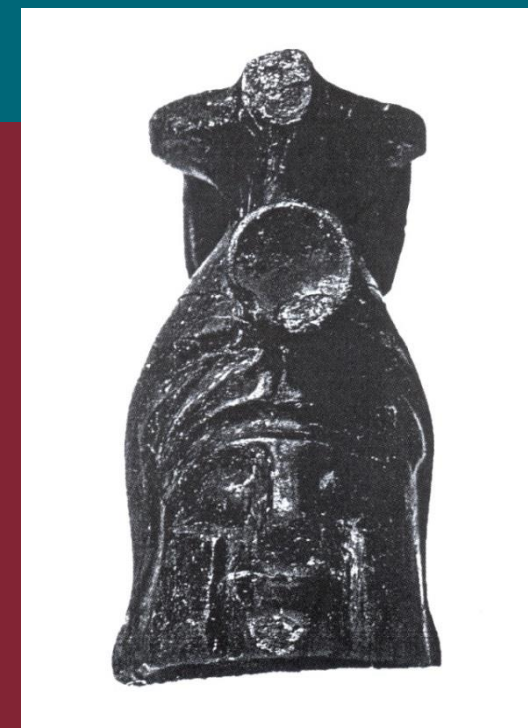
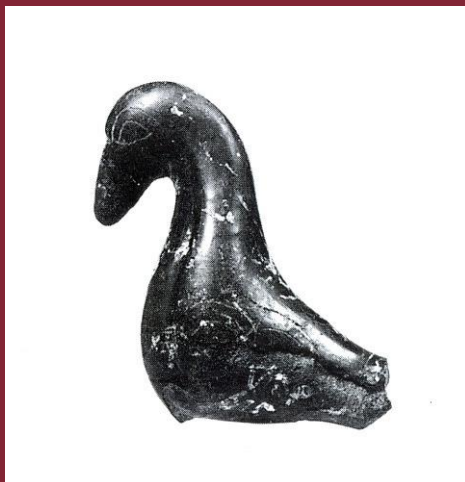
protomi su anse di
oinochoai greche
e magnogreche
(da Rolley 1982)



Buccheri «monumentali» dal santuario di Portonaccio



elementi plastici di anse
(da Colonna et al. 2002)



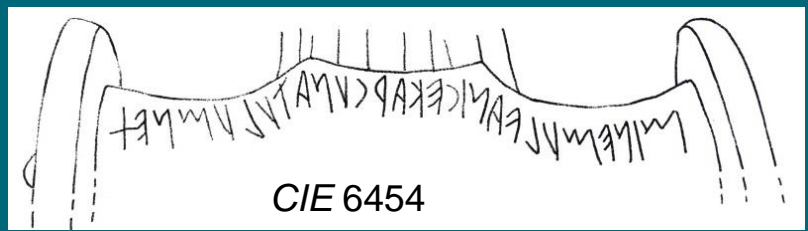
ansa di grande *kyathos*
con protome di Enea (?)
(da Colonna 2009)



Dediche iscritte sui bucheri «monumentali»



 CIE 6421



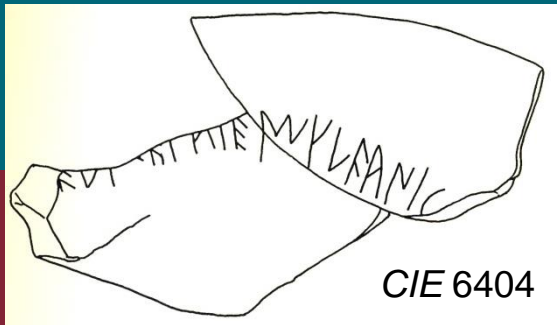
 CIE 6454



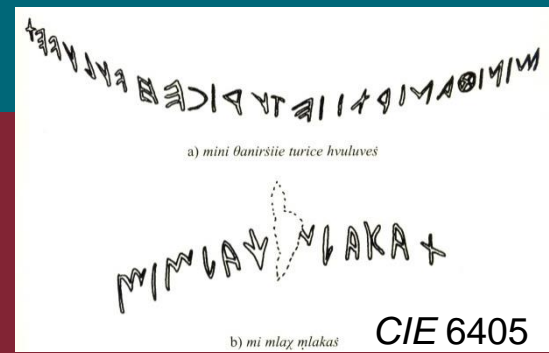
 CIE 6402



 CIE 6397 *mini mulvanic[e ---]*



 CIE 6404



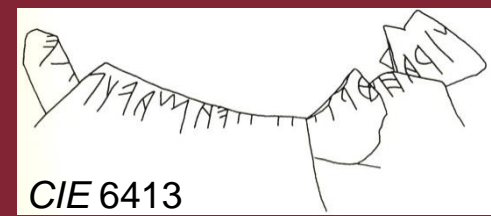
 a) *mini thanisite twice hvulaves*
 b) *mi mlaz mlakas*
 CIE 6405



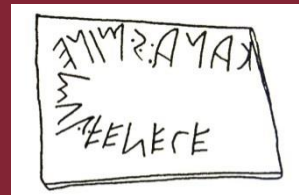
 CIE 6407



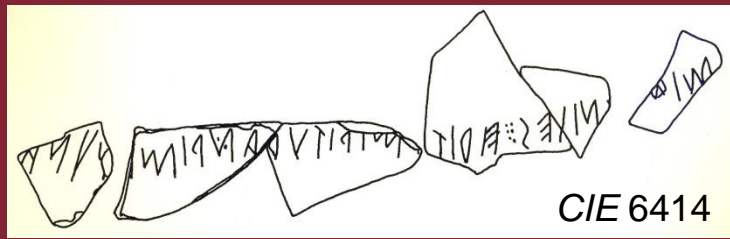
 CIE 6409



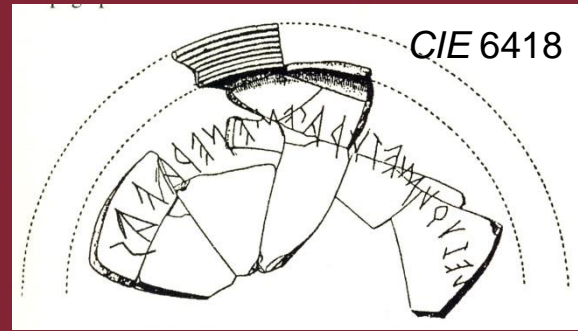
 CIE 6413



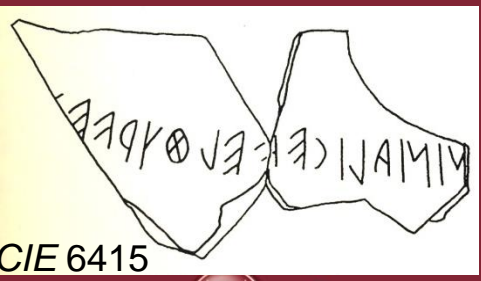
 CIE 6412



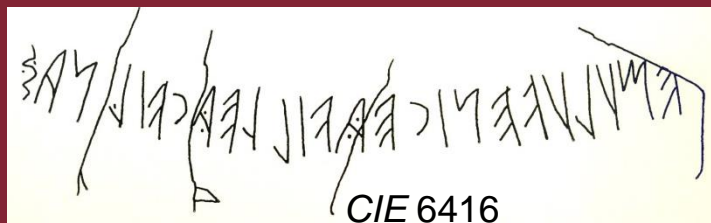
 CIE 6414



 CIE 6418

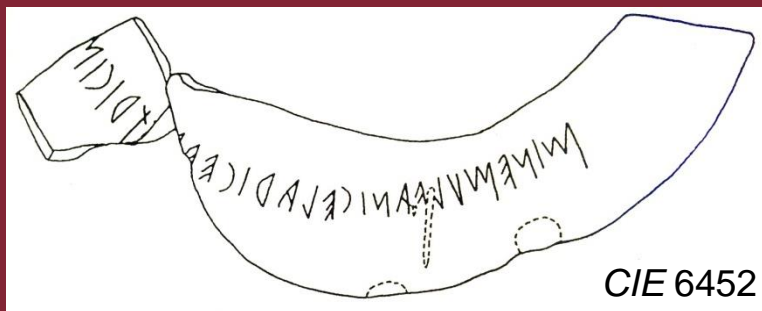
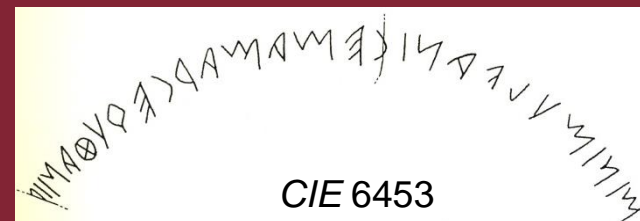
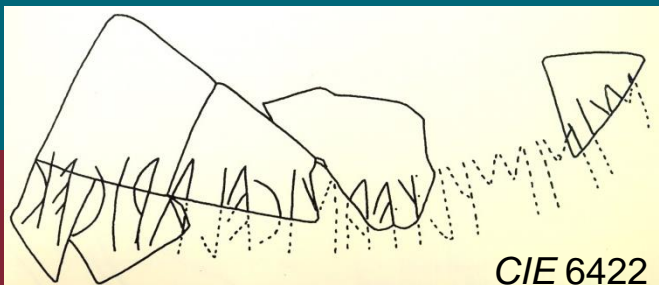
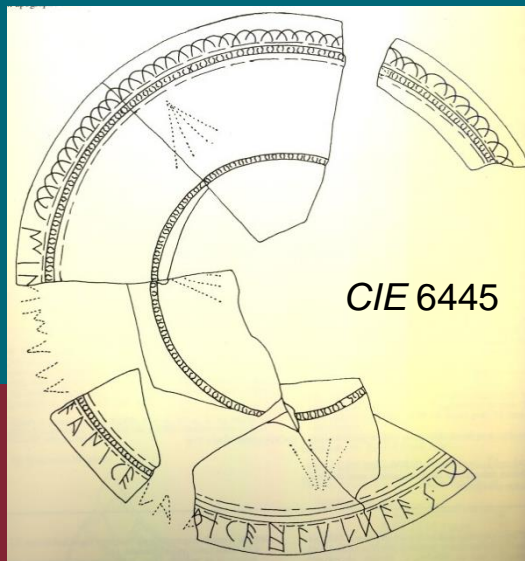
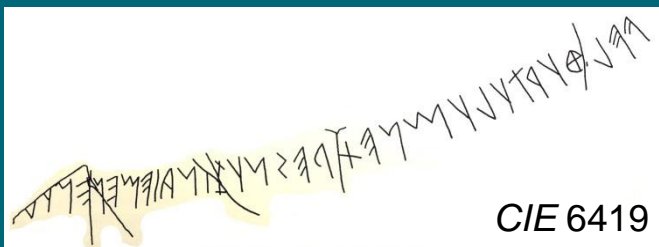


 CIE 6415



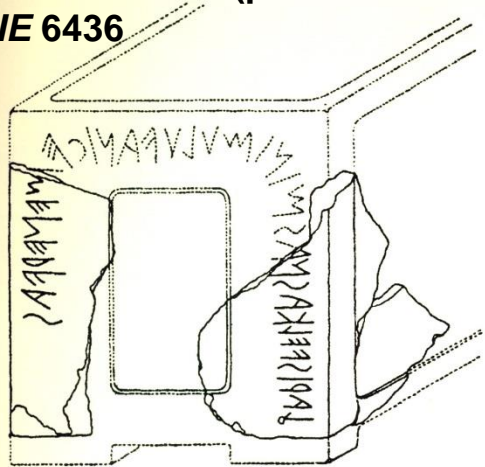
 CIE 6416

Dediche iscritte sui bucceri «monumentali»



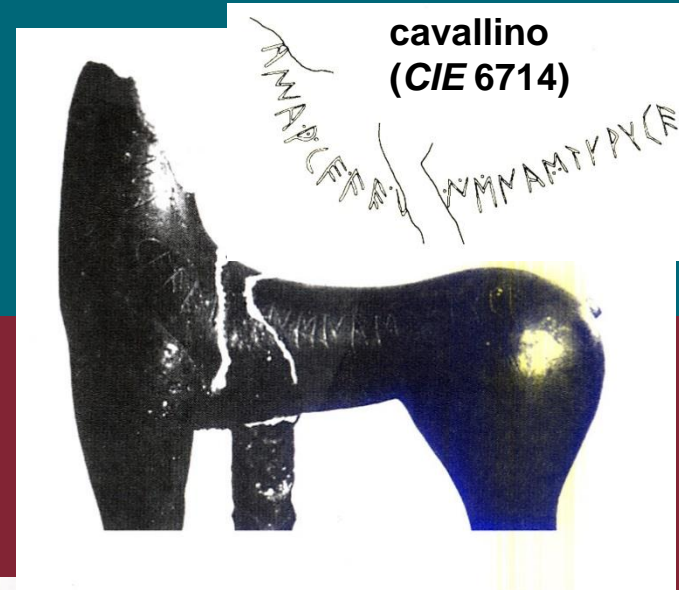
Elementi plastici in bucchero da Veio

arca/cofanetto (per le sortes?)
CIE 6436



laris velkasna[s - -] menervas

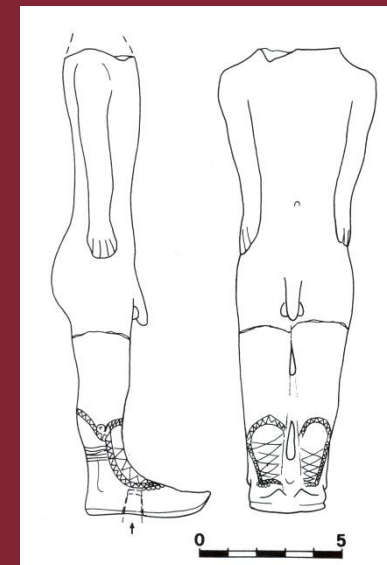
da Colonna 1987



cavallino
(CIE 6714)



kouroi

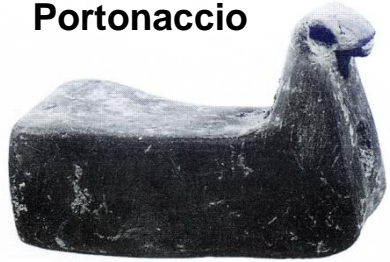


da Colonna
et al. 2002

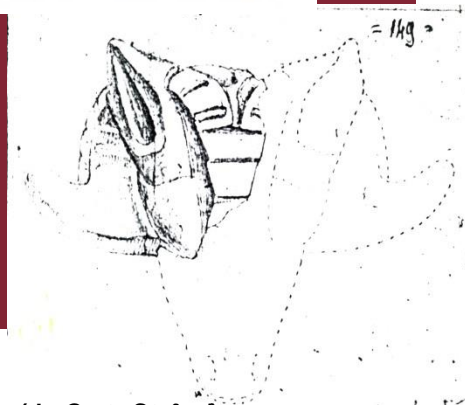
Arieti in bucchero da Veio



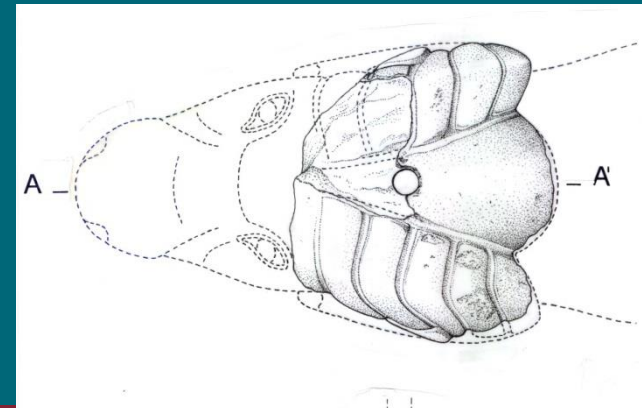
Portonaccio



Campetti



(da Carte Stefani)

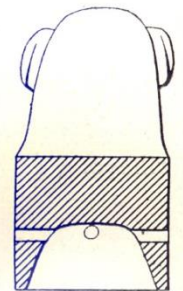
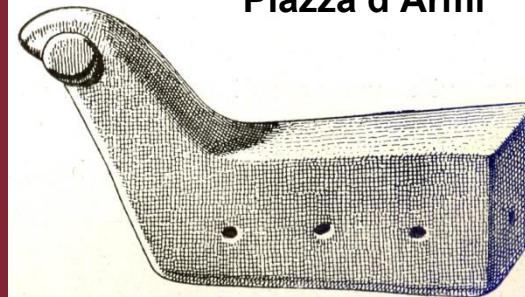


Piazza d'Armi

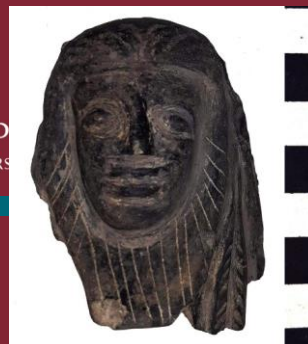
(dis. S. Barberini)



Macchiagrande



Decorazioni plastiche di bucheri «monumentali» dalla zona dell'altare



Una dinastia di rango «regale»: i Tolumnii

Veio, Portonaccio, oinochoe di bucchero
(prima metà del VI secolo a.C.)
mine mulvanice karcuna tulumnes



Veio, Portonaccio, oinochoe di bucchero
(prima metà del VI secolo a.C.)
velθur tulumnes pasnu zinaie mene mul[uvanice]



Una dinastia di rango «regale»: i Tolumnii

Mario Torelli, *L'Etruria di Virgilio: immaginario e realtà*, in *Magno e Latio totaque Ausonia: etnografia virgiliana e Italia augustea*, in *MEFRA* 129.1, 2017, pp. 43-53

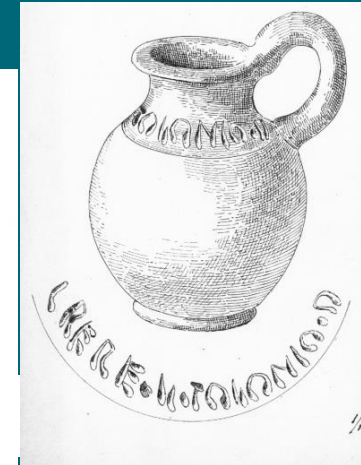
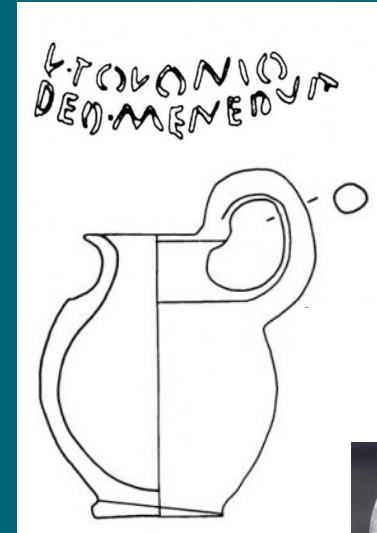
Livius, *Ab urbe condita libri*, 4.17.3-4: (437 a.C.)
Fidenae, colonia Romana, ad Lartem Tolumnium
[Veientium regem] ac Veientes defecere.

Verg., *Aen.*, XI, 428-430:
non erit auxilio nobis Aetolus et Arpi: / at Messapus erit
felixque Tolumnius et quos / tot populi misere duces...

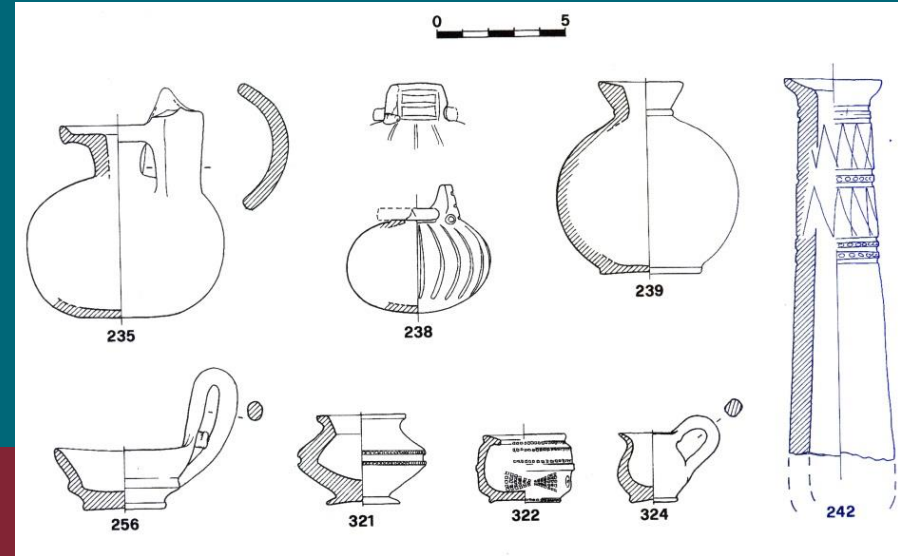
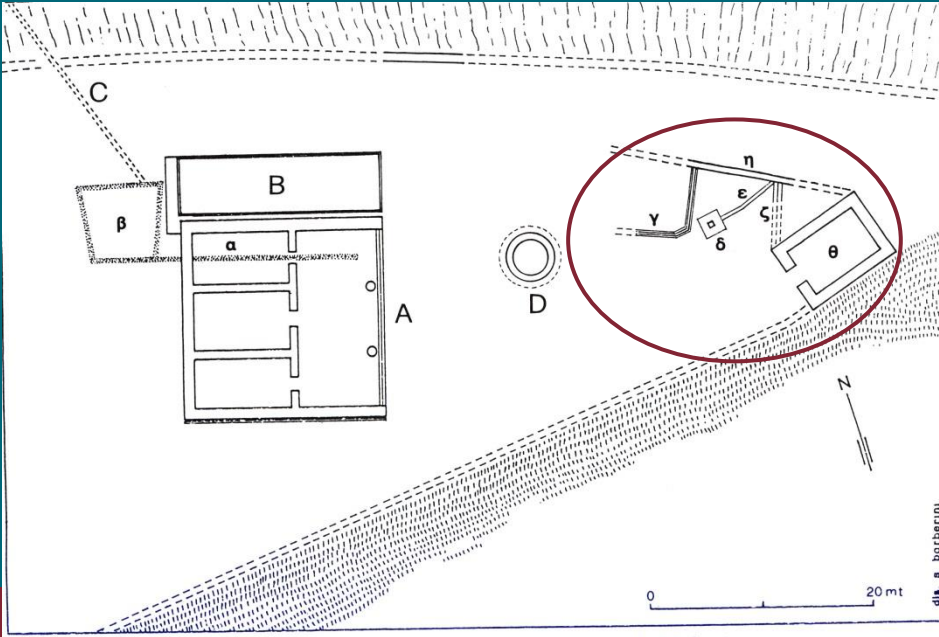
Verg., *Aen.*, XII, 257-259 :
Tum uero augurium Rutuli clamore salutant / expediuntque manus, primusque
Tolumnius augur / 'hoc erat, hoc uotis' inquit 'quod saepe petiui. / Accipio
agnoscoque deos...

Verg., *Aen.*, XII, 460-461:
cadit ipse Tolumnius augur, / primus in aduersos telum qui torserat hostis.

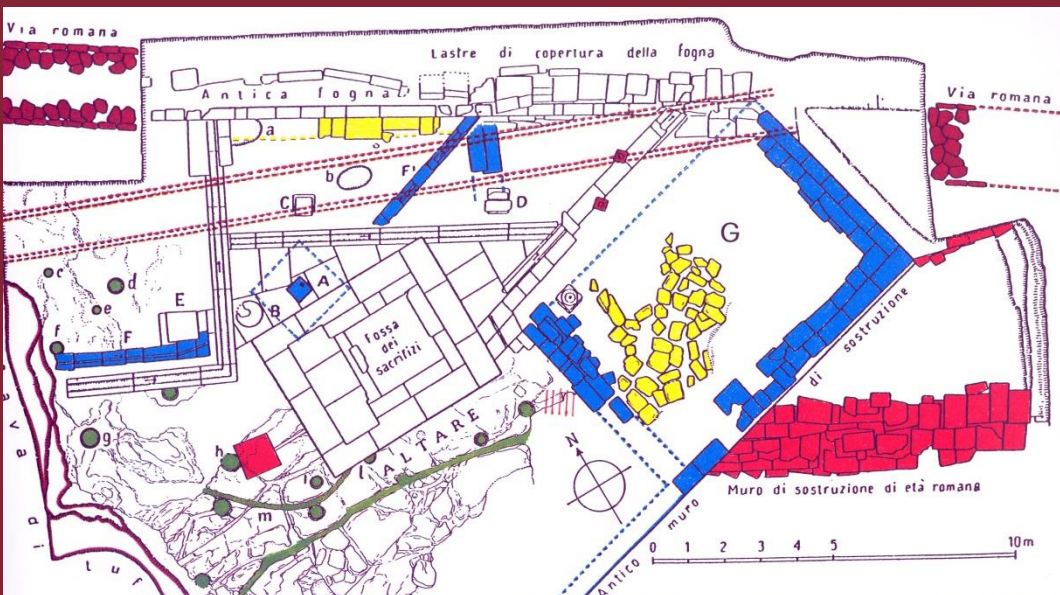
...



Vasi in bucchero dal santuario di Portonaccio in età arcaica



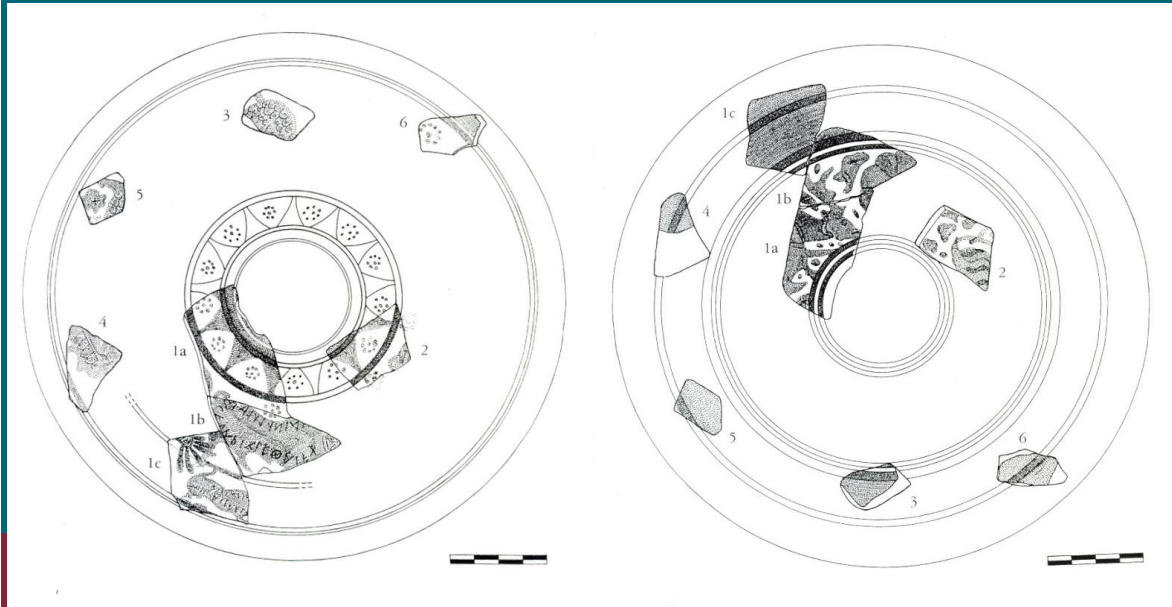
area del deposito votivo nel settore orientale del santuario (da Colonna et al. 2002)



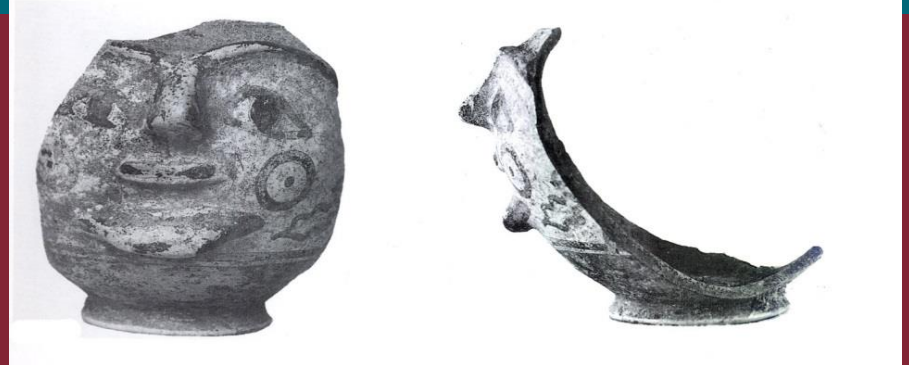
La ceramica etrusco-corinzia prodotta a Veio: *veltur anciniēs*

Grande phiale da Veio, Portonaccio

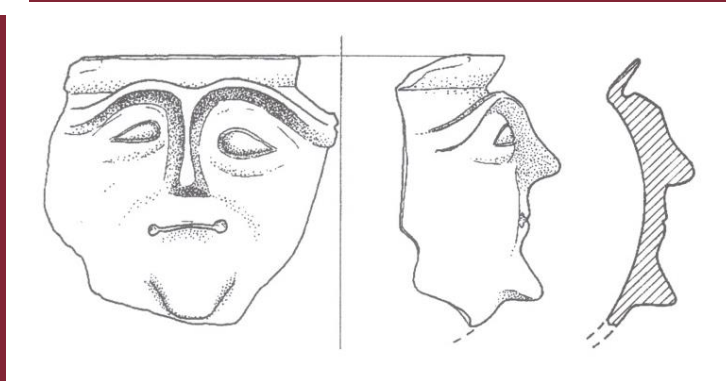
*mini mulvanice laris. lethaies.
mi(ni) zinace vel[thur a]nciniēs*



La ceramica etrusco-corinzia prodotta a Veio: *veltur anciniēs*



da Colonna et al. 2002



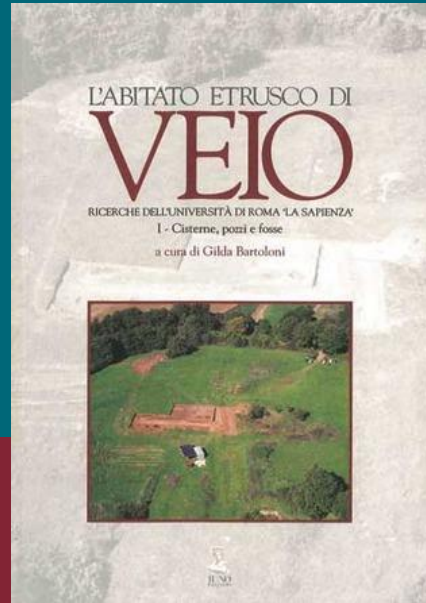
La ceramica etrusco-corinzia prodotta a Veio nell'orientalizzante recente: il corredo del Tumulo Chigi



da Michetti – van Kampen, in stampa



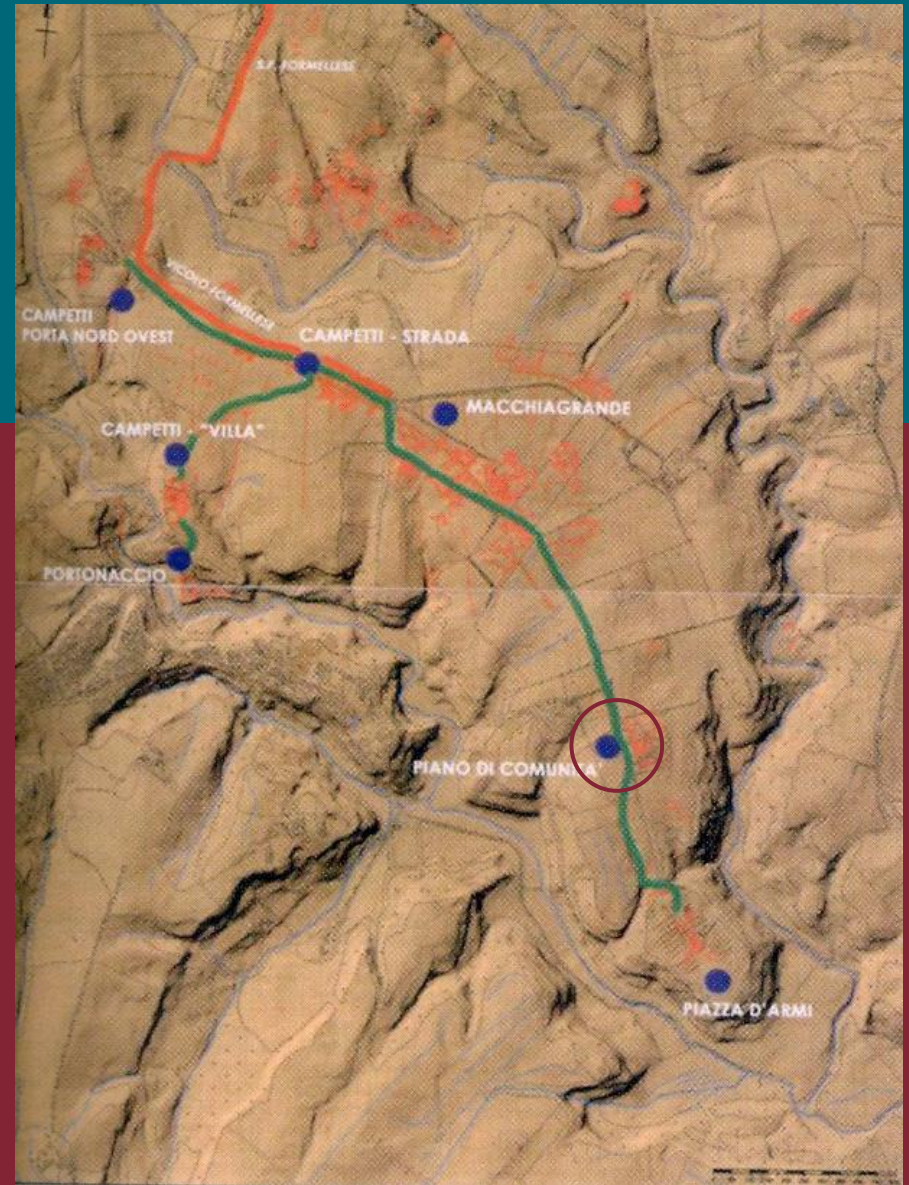
Il quartiere artigianale in voc. Comunità



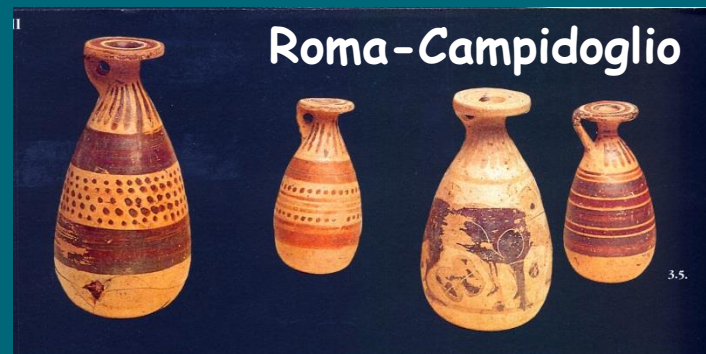
fornaci per la produzione di vasellame da mensa



pozzo contenente uno scarico di ceramiche di VI-V sec., in particolare bucchero (da Belelli Marchesini 2009)



La ceramica etrusco-corinzia nei depositi votivi



Veio-Portonaccio



La ceramica etrusco-corinzia nei depositi votivi

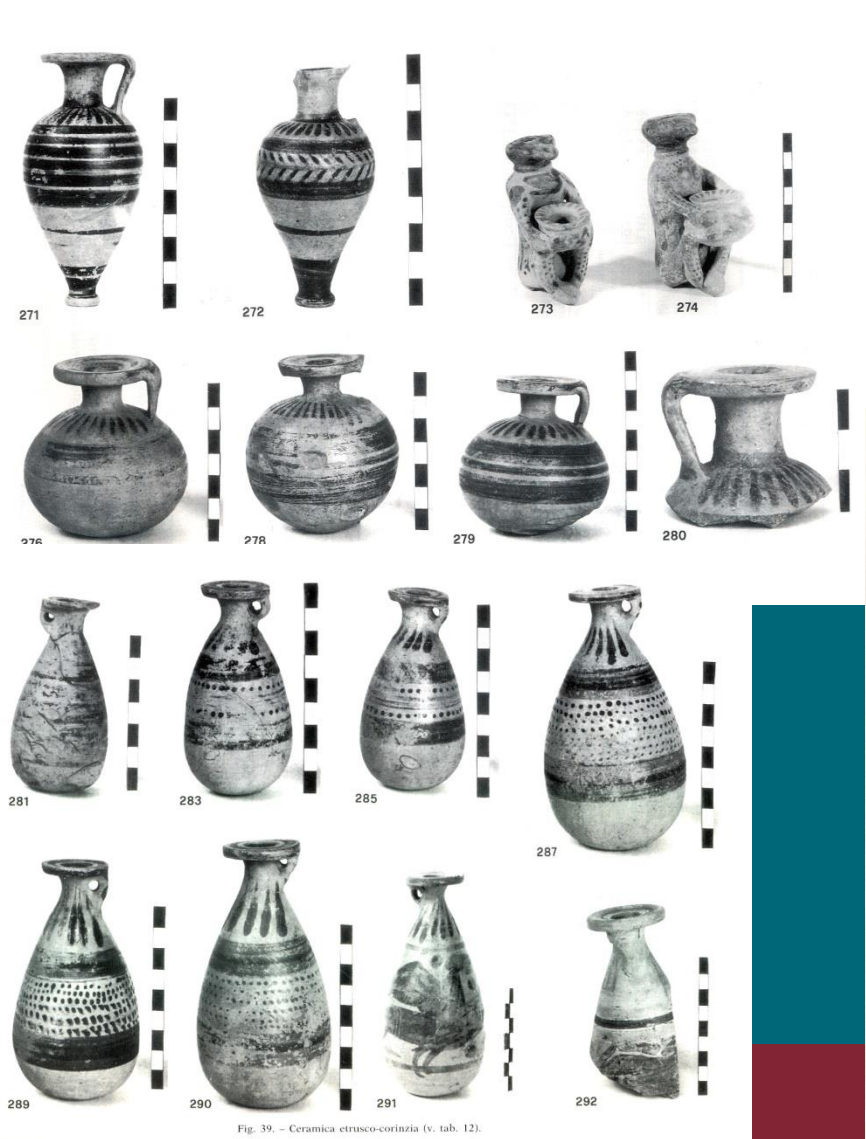
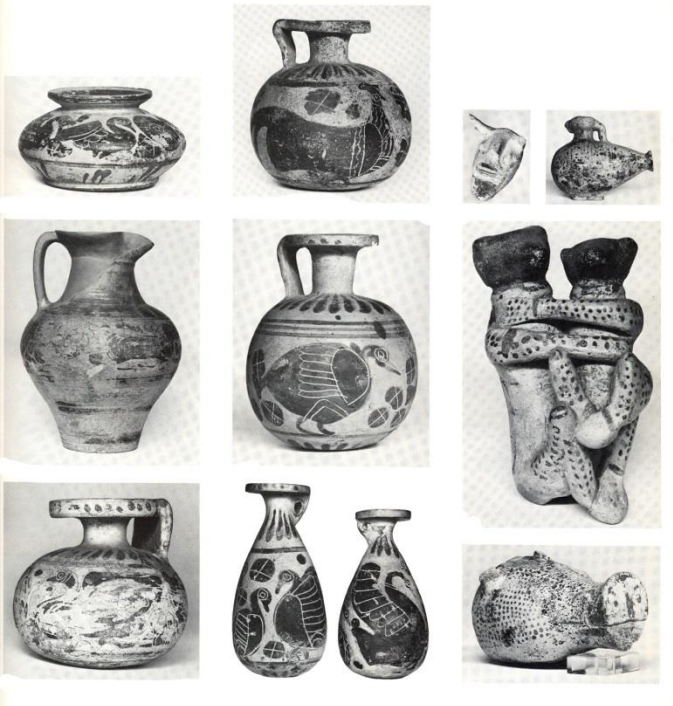
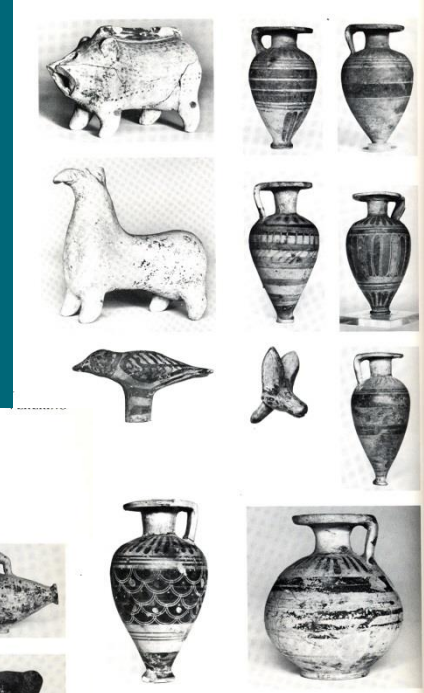


Fig. 39. - Ceramica etrusco-corinzia (v. tab. 12).



Satricum

Produzioni romane o laziali: pendenti in bronzo, avorio, osso



Veio-Portonaccio



Roma-Sant'Omobono

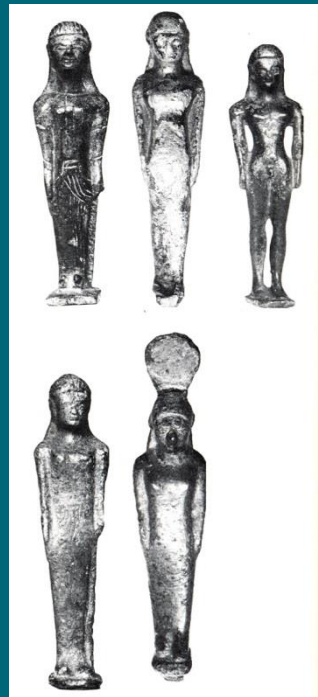


Anagni-S. Cecilia

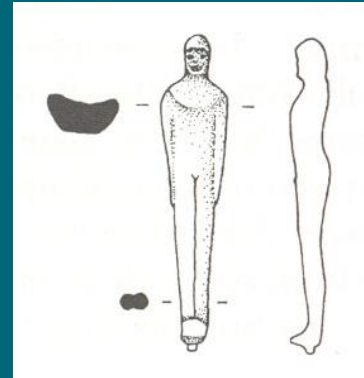
Produzioni romane o laziali: bronzetti



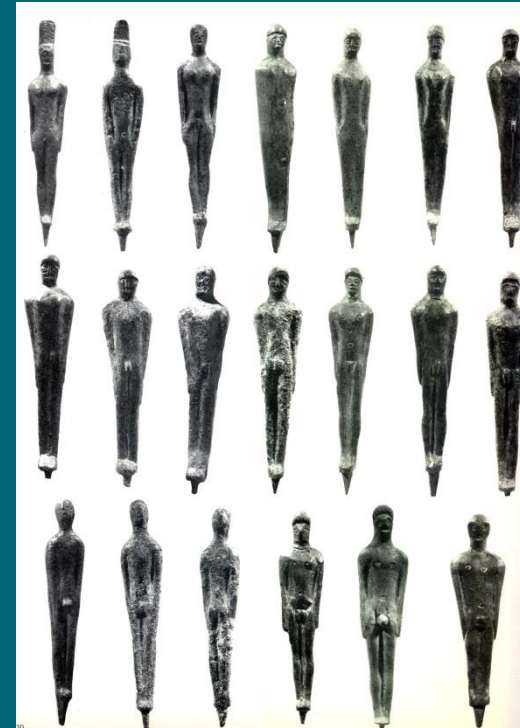
Veio-
Portonaccio



Satricum



Roma-
Porta Portese



Gabii



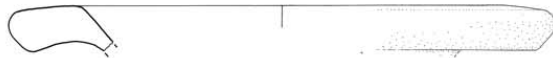
3.1.31-32.

Roma-Lapis Niger

Bracieri di produzione veiente (metà – seconda metà VI sec.)



Campetti (fregi animalistici)



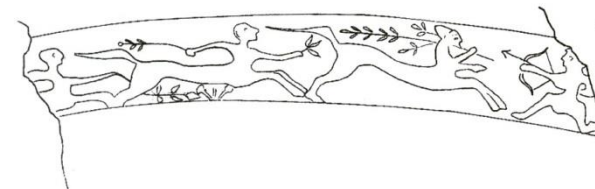
Comunità (fregi animalistici)



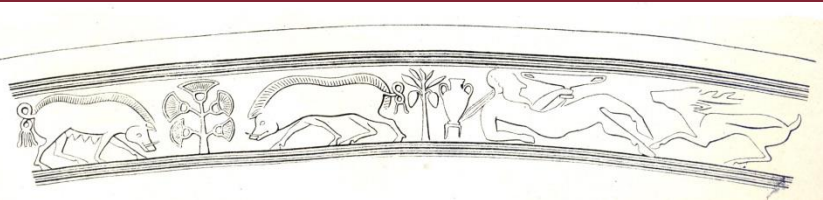
4



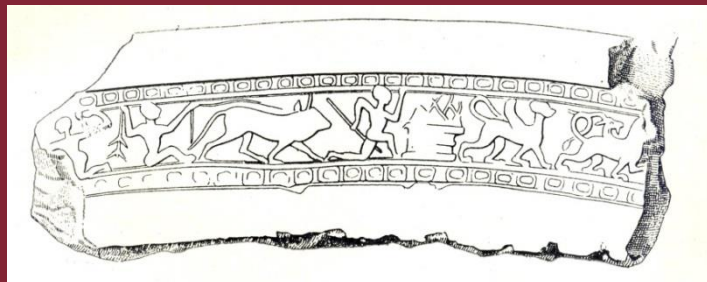
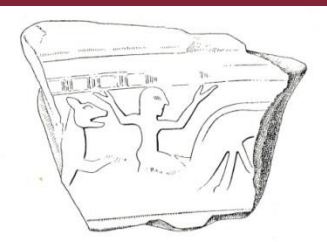
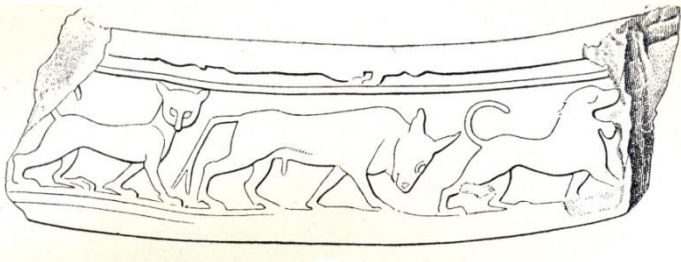
Portonaccio (Herakles e Pholos)



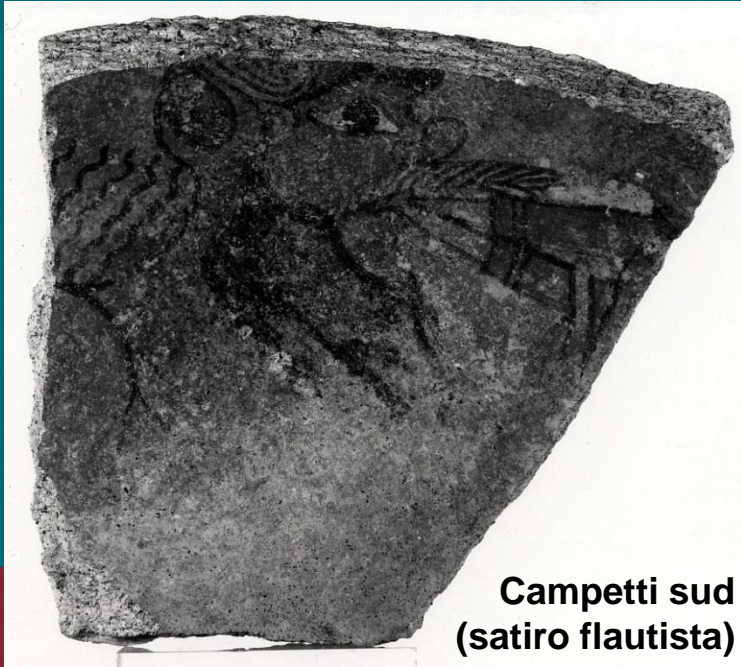
coll. privata (Herakles e Pholos)



Piazza d'Armi (sileno bevitore; fregio animalistico caccia; sacrificio del toro)



Louteria fittili con decorazione dipinta (produzione veiente?)



**Campetti sud
(satiro flautista)**



Comunità (boccioli e fiori di loto)



Portonaccio (ariete?)



Portonaccio, tempio dell'Apollo: *pinakes* con decorazione dipinta



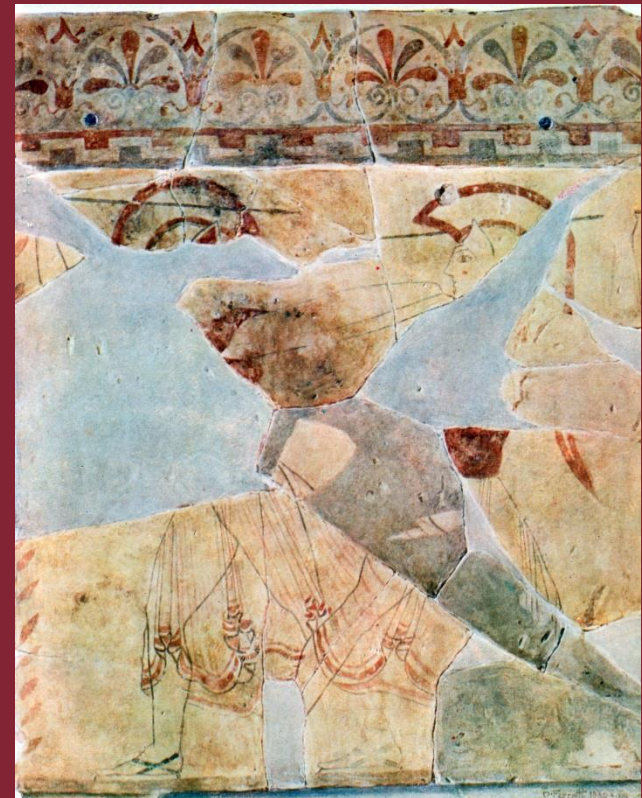
O. Ferretti

datazione delle lastre:

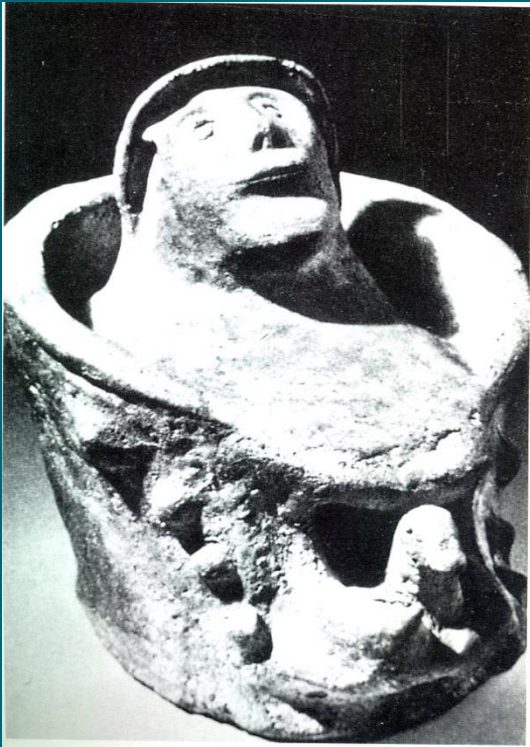
- 470 a.C. (Colonna)
- due gruppi di cronologia diversa (Torelli):
fine VI-inizi V sec.; seconda metà V sec.



NZA
DI ROMA



La coroplastica votiva



La coroplastica votiva



625



628



636



630



631



632



635



645



645 a



646

Statuette femminile in trono (n. 625), coppia in trono (n. 628), testa di figurina femminile (n. 646) e figurine femminili stanti.



637



674



648



656



647



659



741



659



677



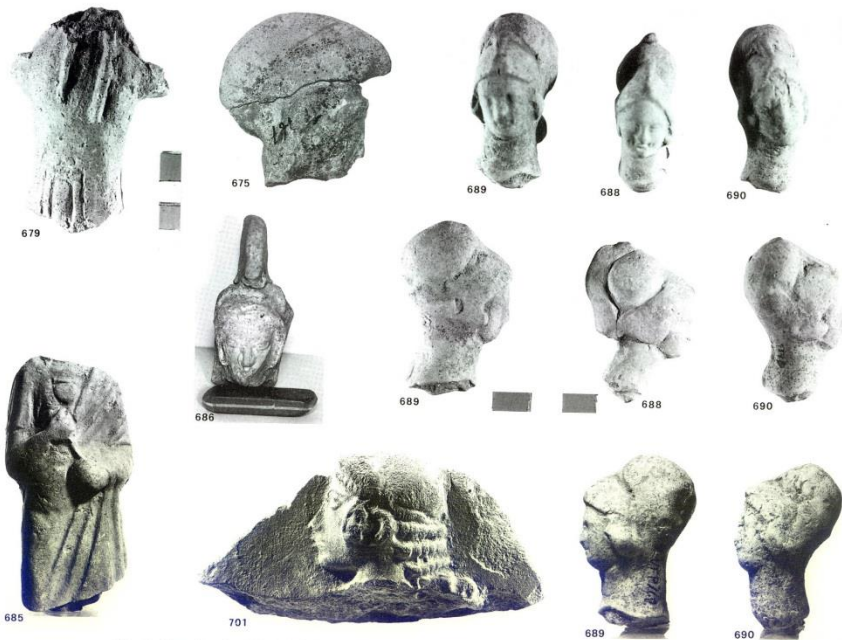
657

Figurina femminile stante (n. 637), statuette di guerriero (nn. 674, 677), testina pertinente a donario (n. 741) e teste di figurine femminili.

La coroplastica votiva



Teste di figurine femminili.



Statuette di guerriero (nn. 675, 679), di figura giovanile (n. 685) e di Atena (nn. 686, 688-690); tavoletta a rilievo (n. 701).

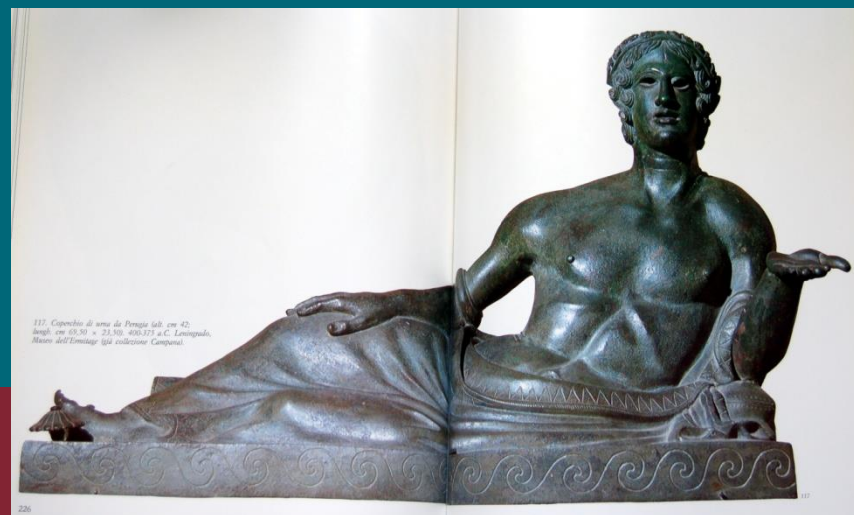


... (n. 681), di Apollo (nn. 691, 693), di Musa (n. 698) e di figura silenica (n. 699);
votivi anatomici (nn. 709-710a).

La coroplastica votiva: figure di guerrieri



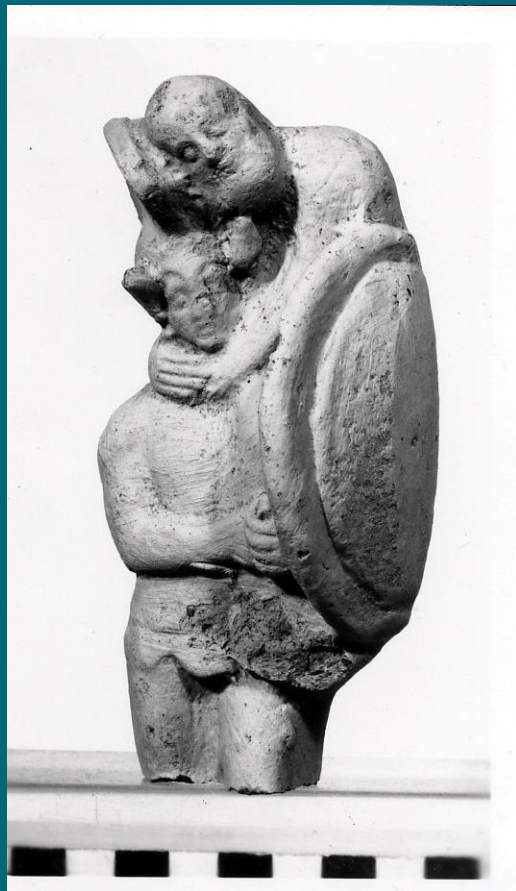
La coroplastica votiva: la «Testa Malavolta»



La coroplastica votiva: Enea e Anchise



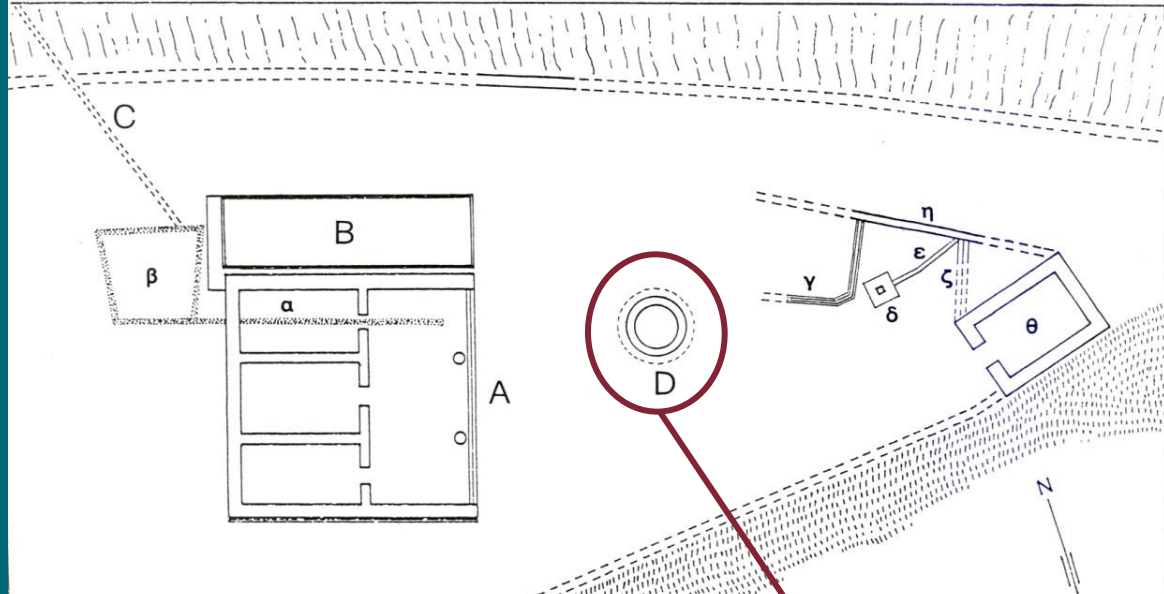
La coroplastica votiva: Enea e Anchise



La coroplastica votiva: Enea e Anchise



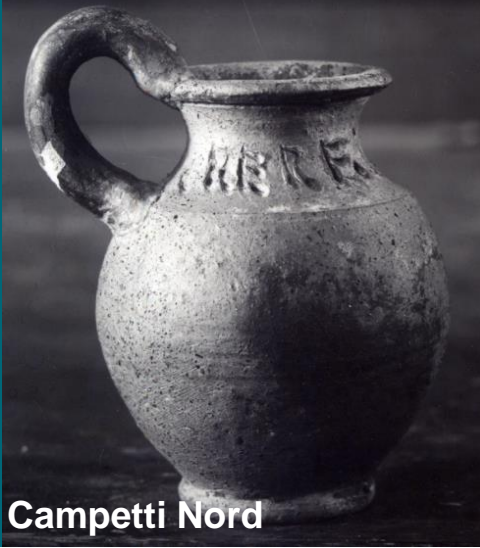
Il santuario di Portonaccio. La cisterna Santangelo



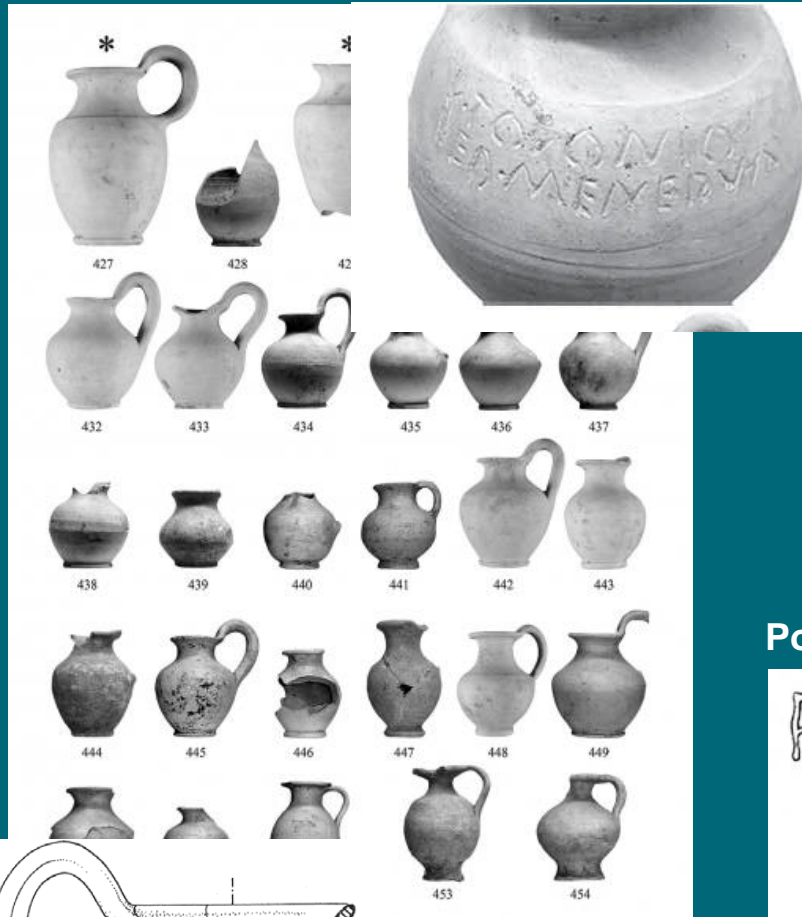
Il santuario di Portonaccio. Materiali dalla cisterna Santangelo nei depositi del Museo di Villa Giulia



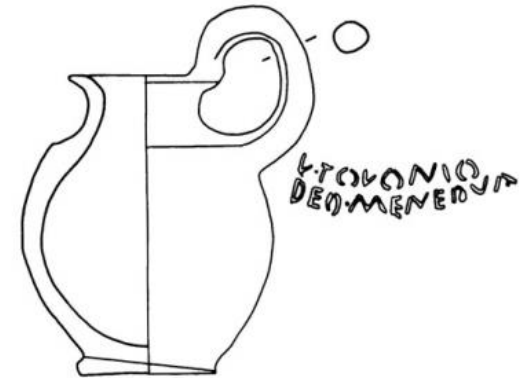
L'uso delle olpette acrome



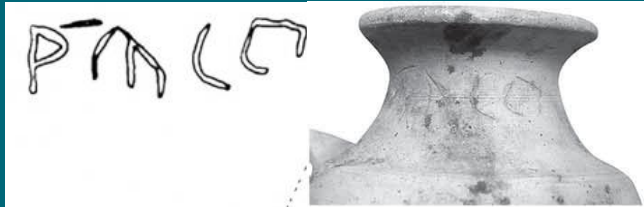
Campetti Nord



L. TOLONIUS
DEN. MENERDIA

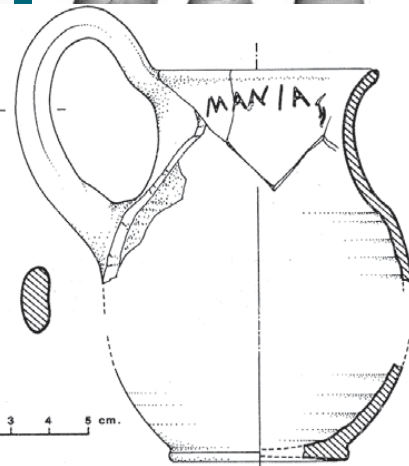
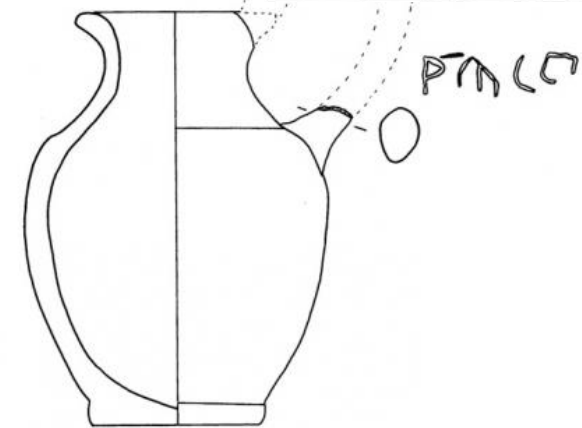


Portonaccio (da Ambrosini 2009)



PTA Λ

PTA Λ



Roma, Laurentina-
Acqua Acetosa, abitato
arcaico, edificio V, 1,
pozzo 1, olpetta
acroma con l'iscrizione
graffita dopo la cottura
Manias
(da Bedini 1990).

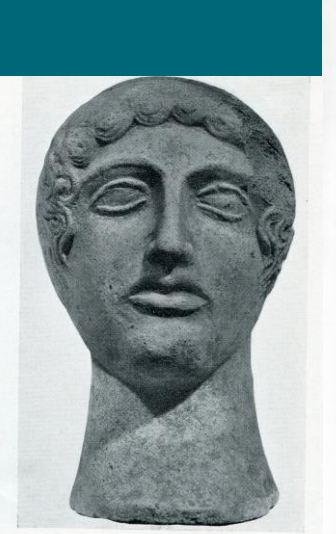
Il santuario di Campetti Nord



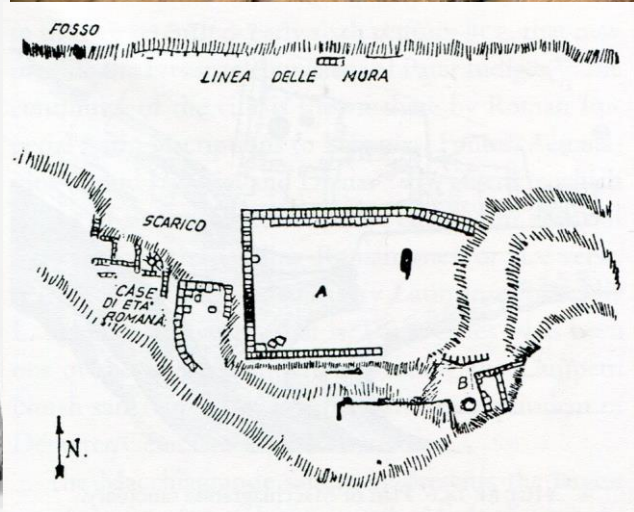
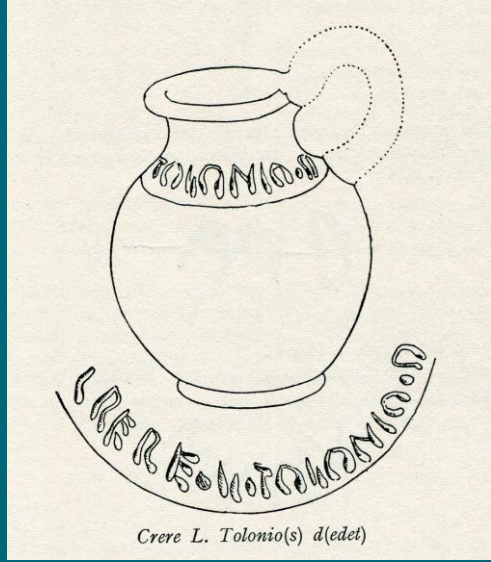
A XIX



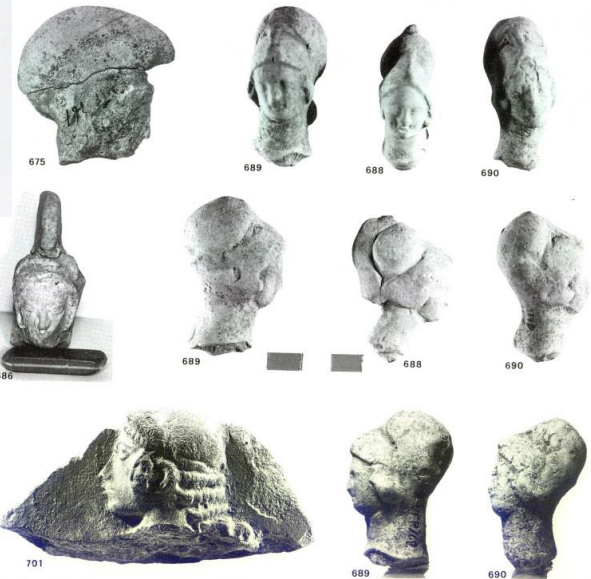
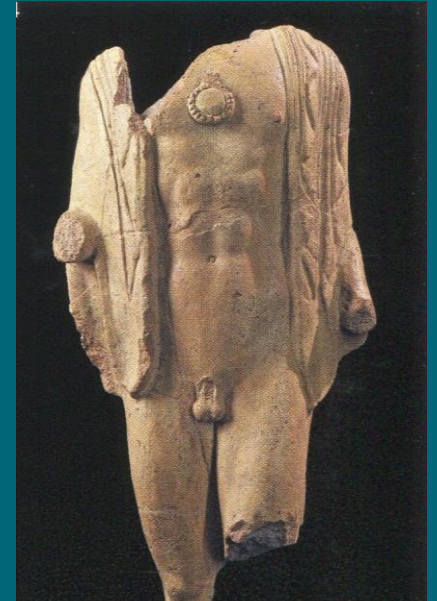
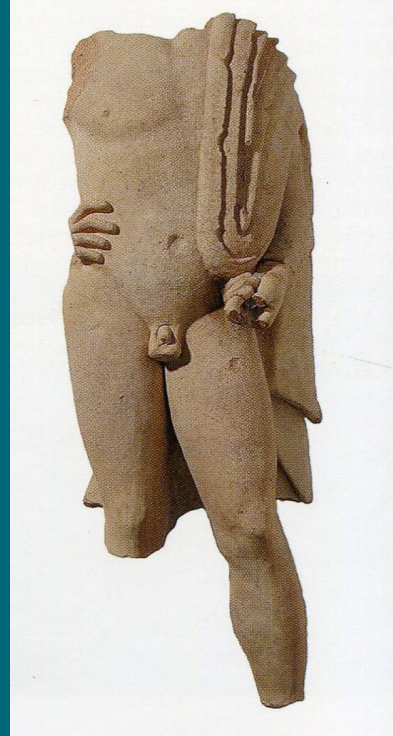
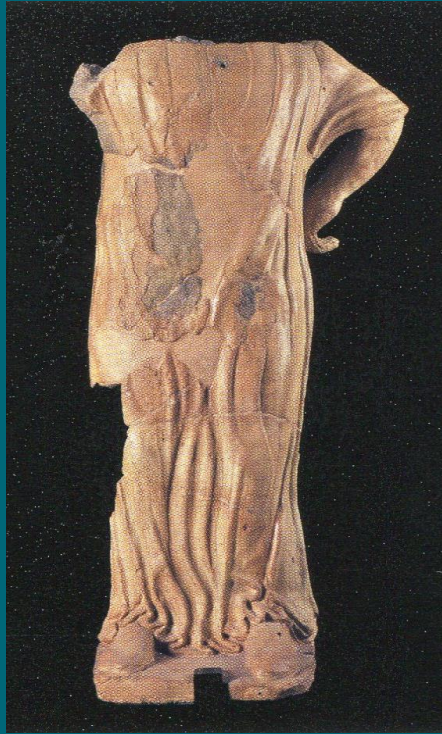
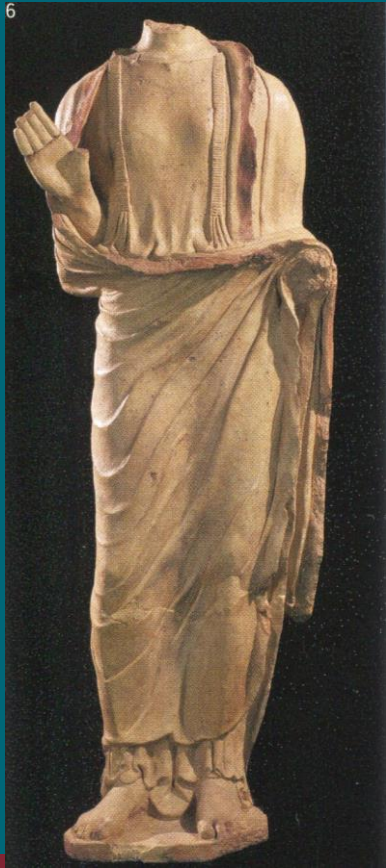
A XIX



C IV



Il santuario di Portonaccio. Le statue votive e i passaggi di *status* (fine V-inizi IV sec.) e la continuità del culto di *Menerva* (IV-III sec.)



SAPIENZA
UNIVERSITÀ DI ROMA

Statuette di guerriero (nn. 675, 679), di figura giovanile (n. 685) e di Atena (nn. 686, 688-690); tavoletta a rilievo (n. 701).