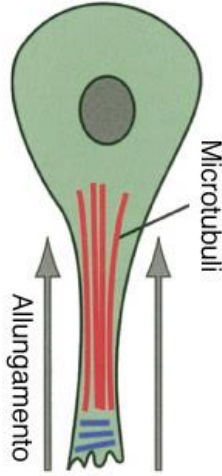


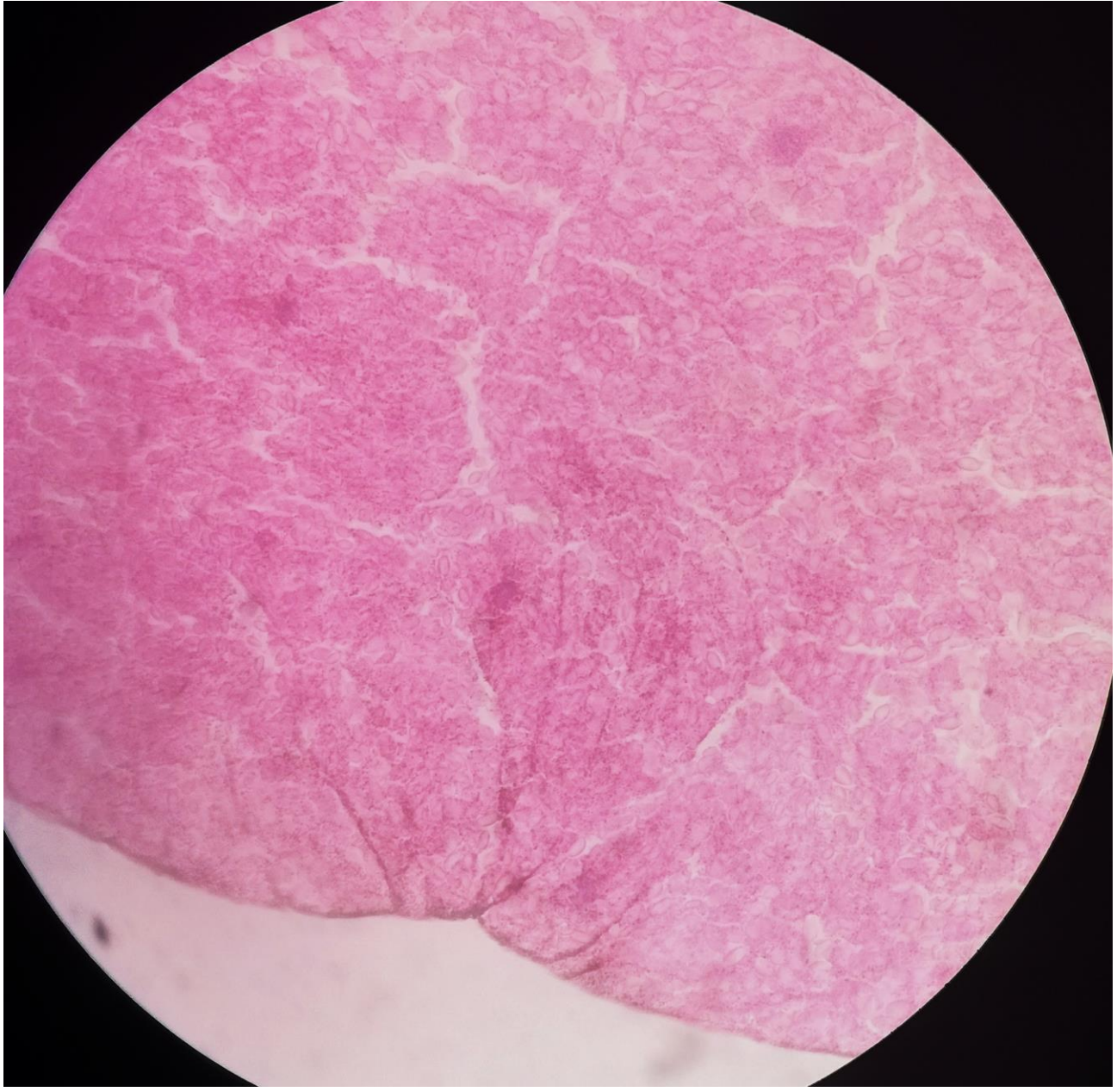
Microfilamenti di actina

Costrizione  
apicale

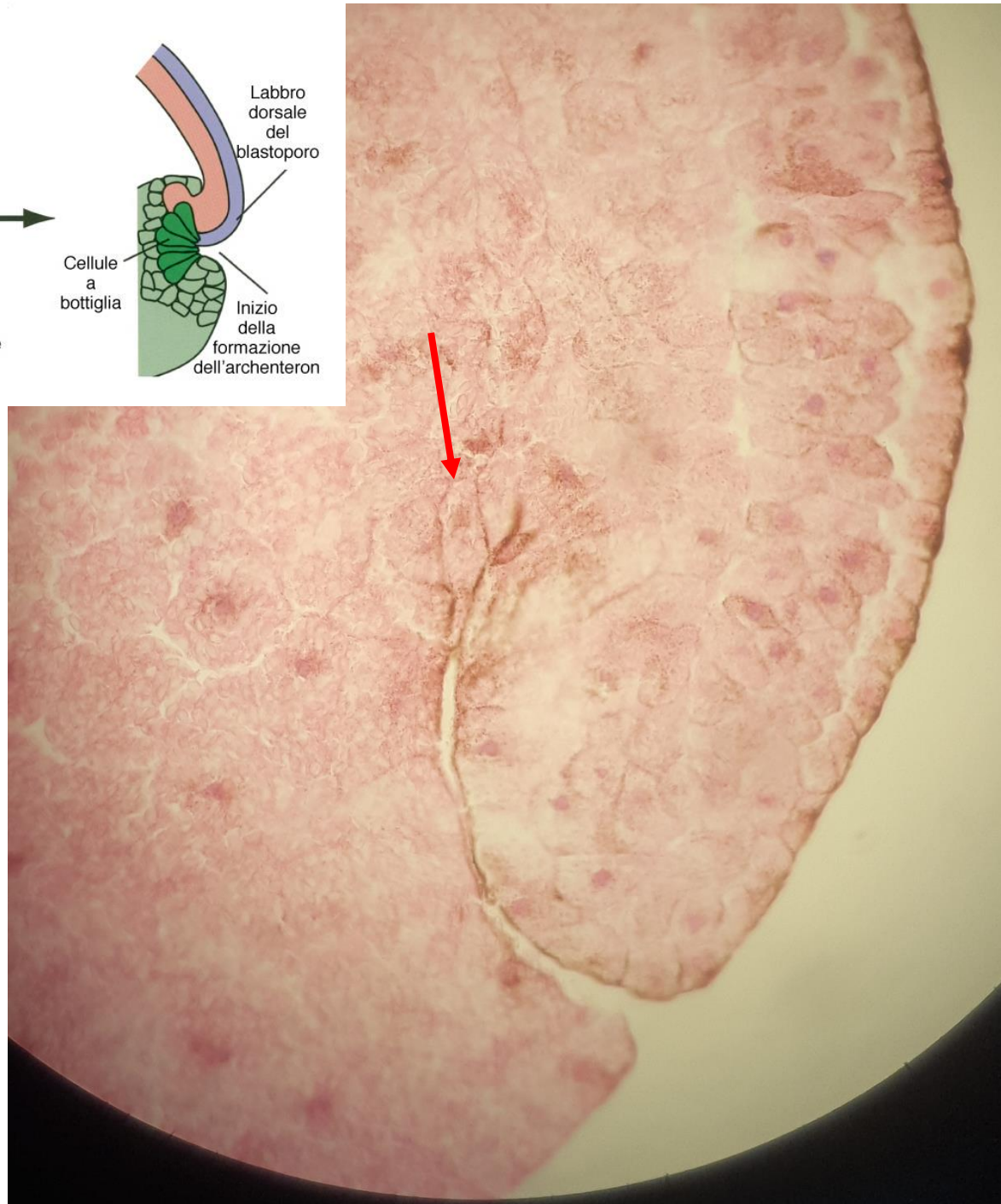
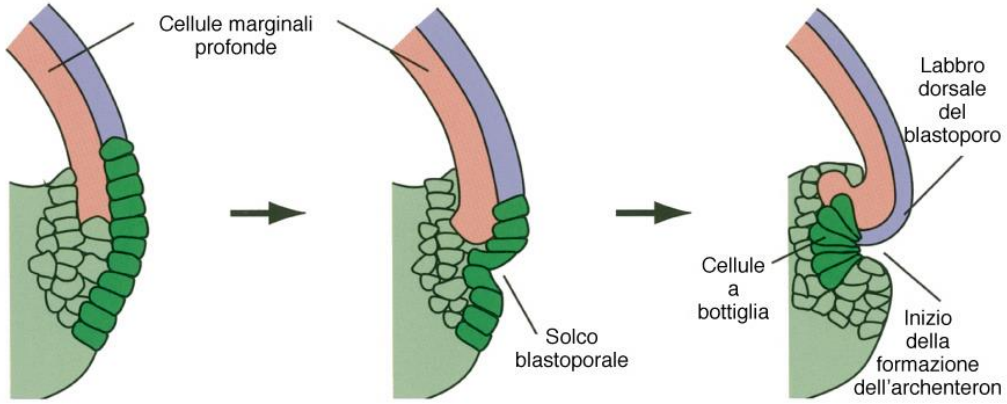


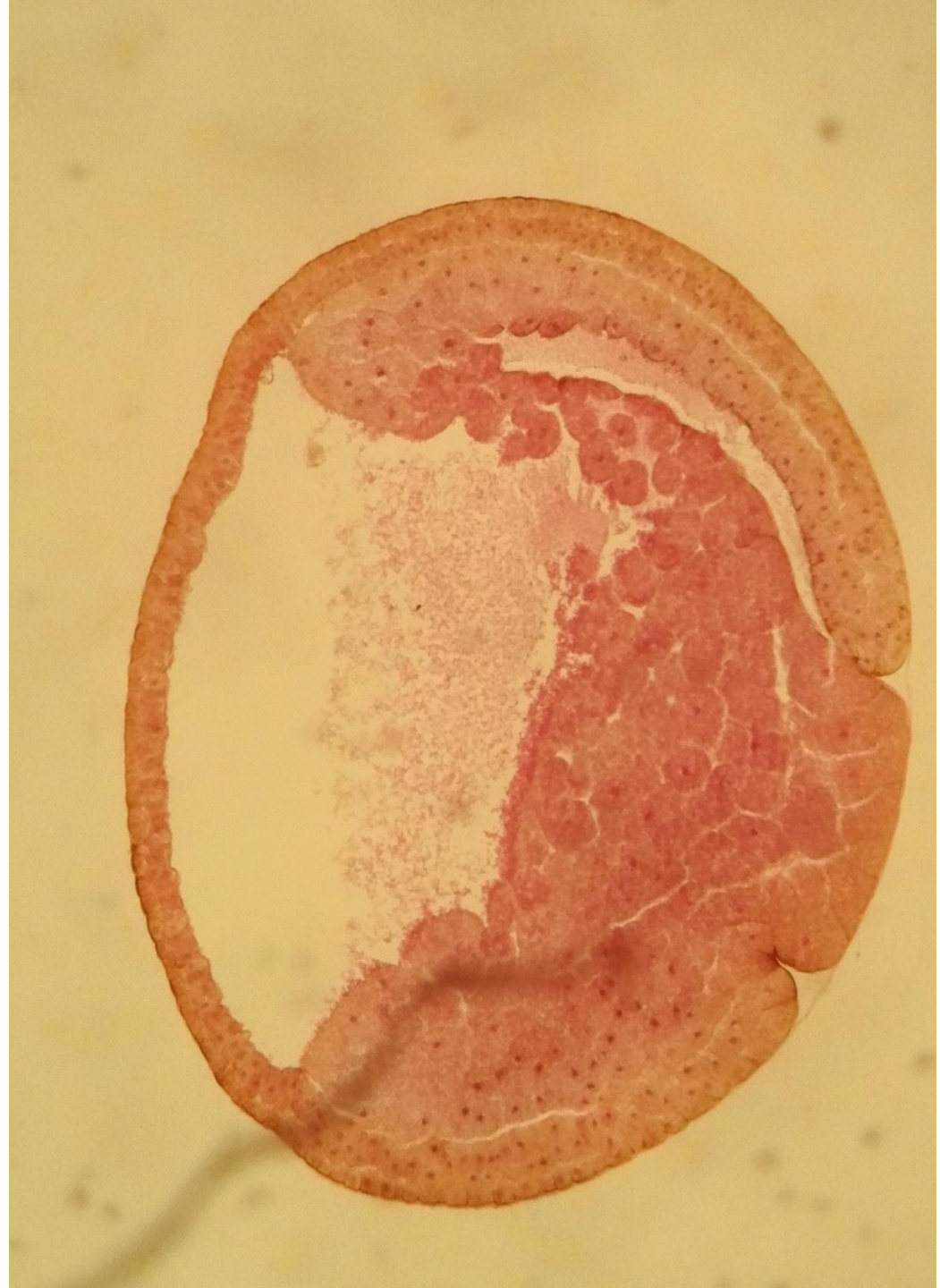
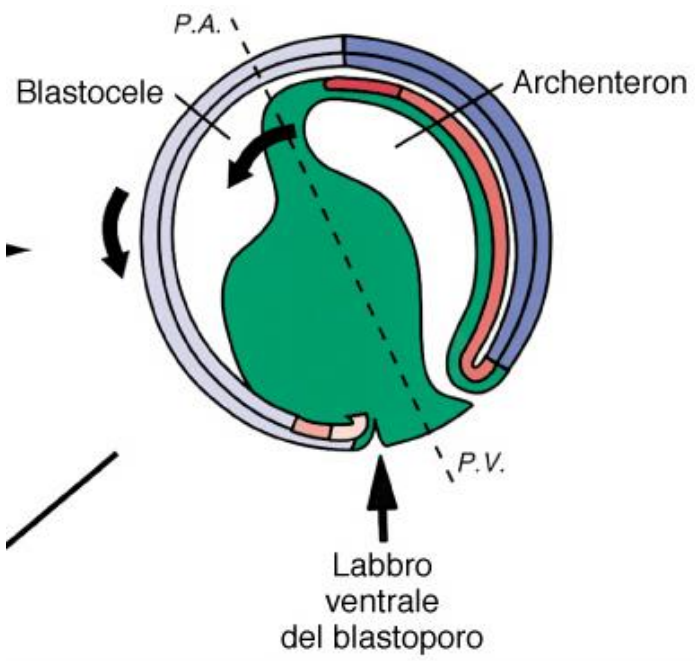
Microtubuli

Allungamento



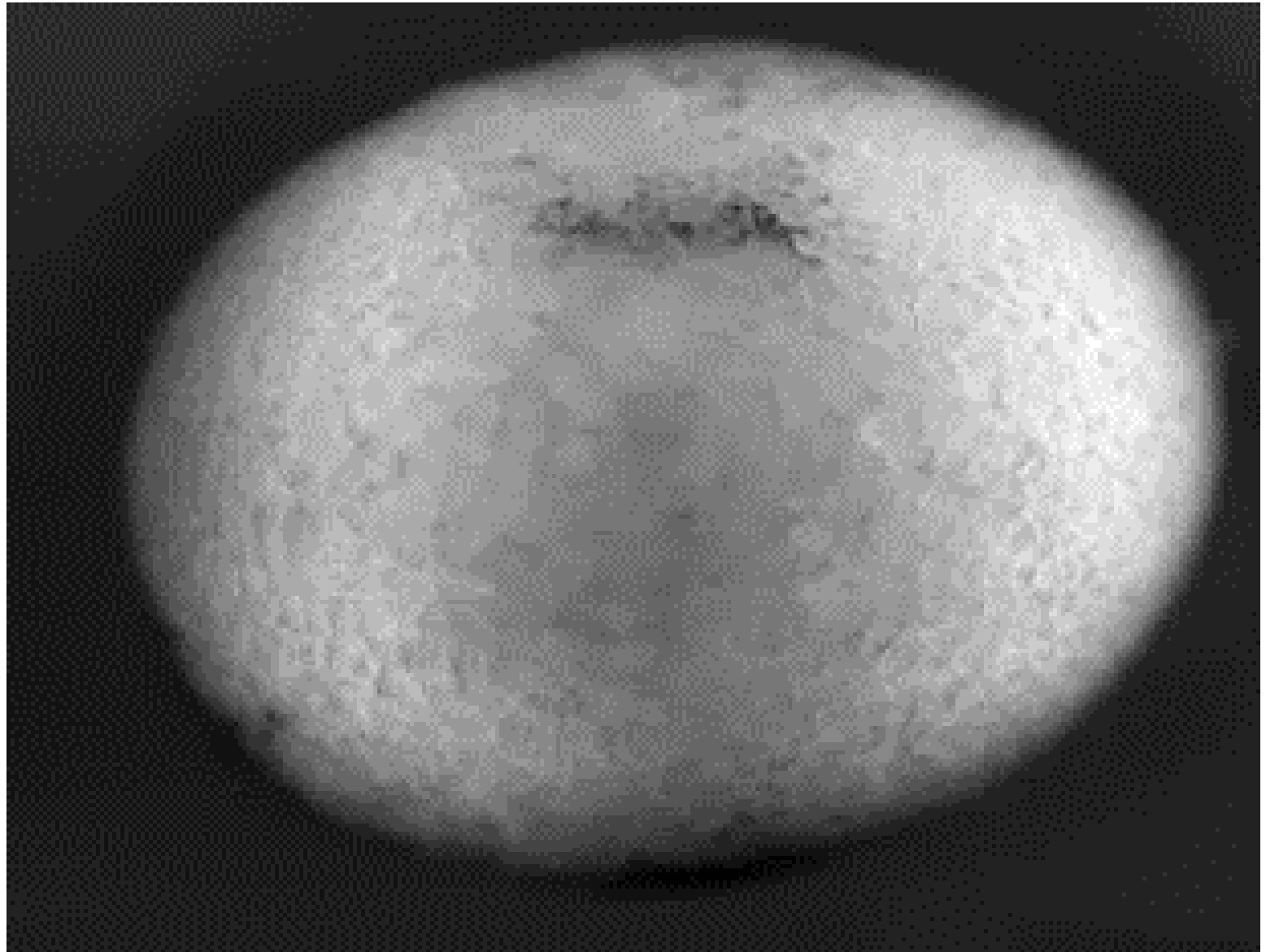
c) Schema di formazione dell'archenteron



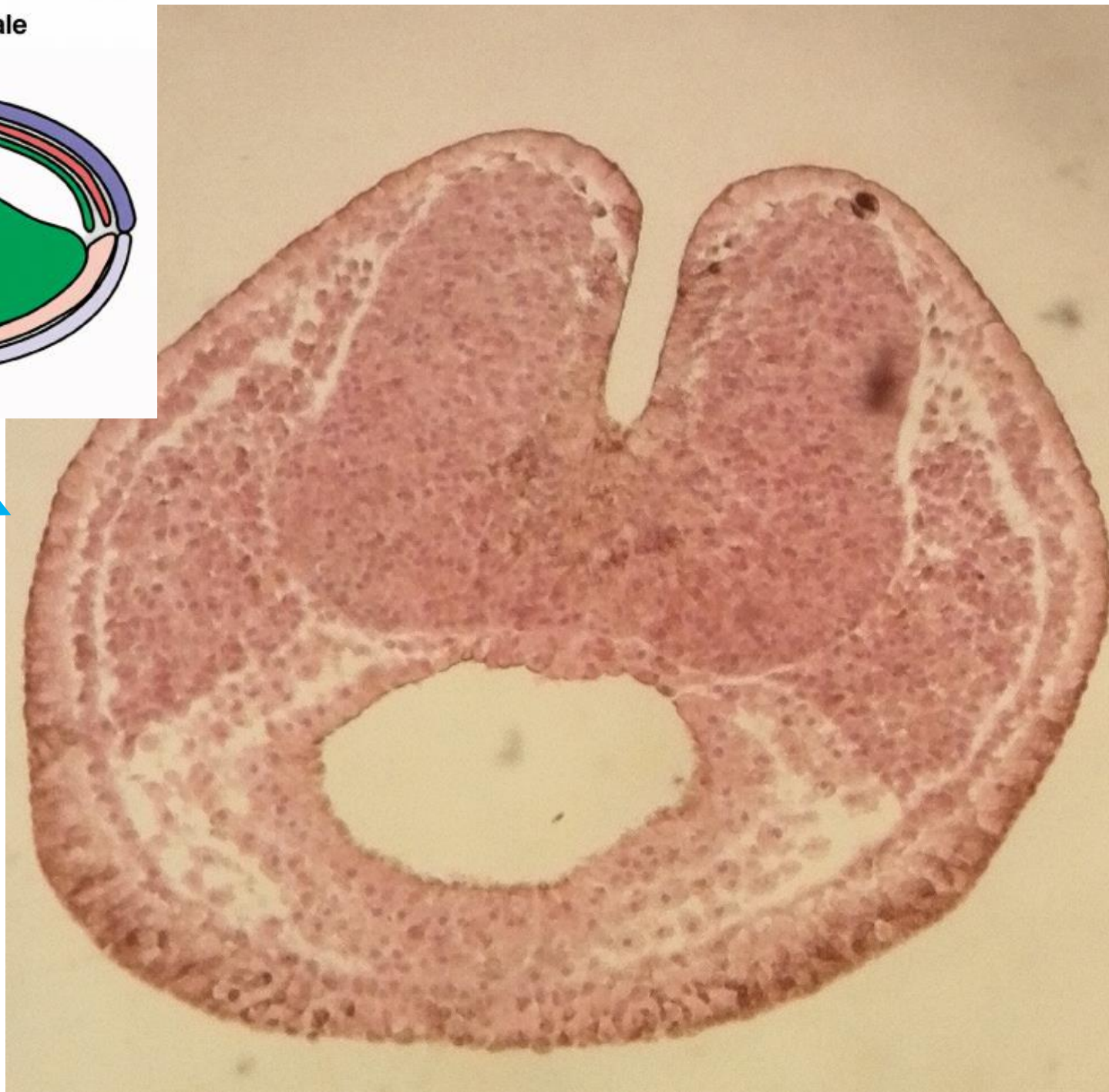
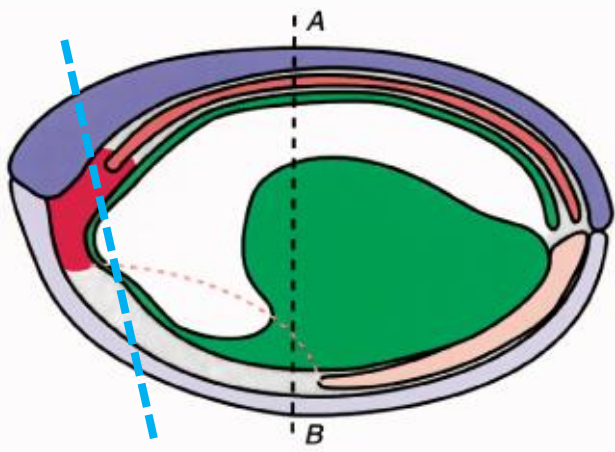






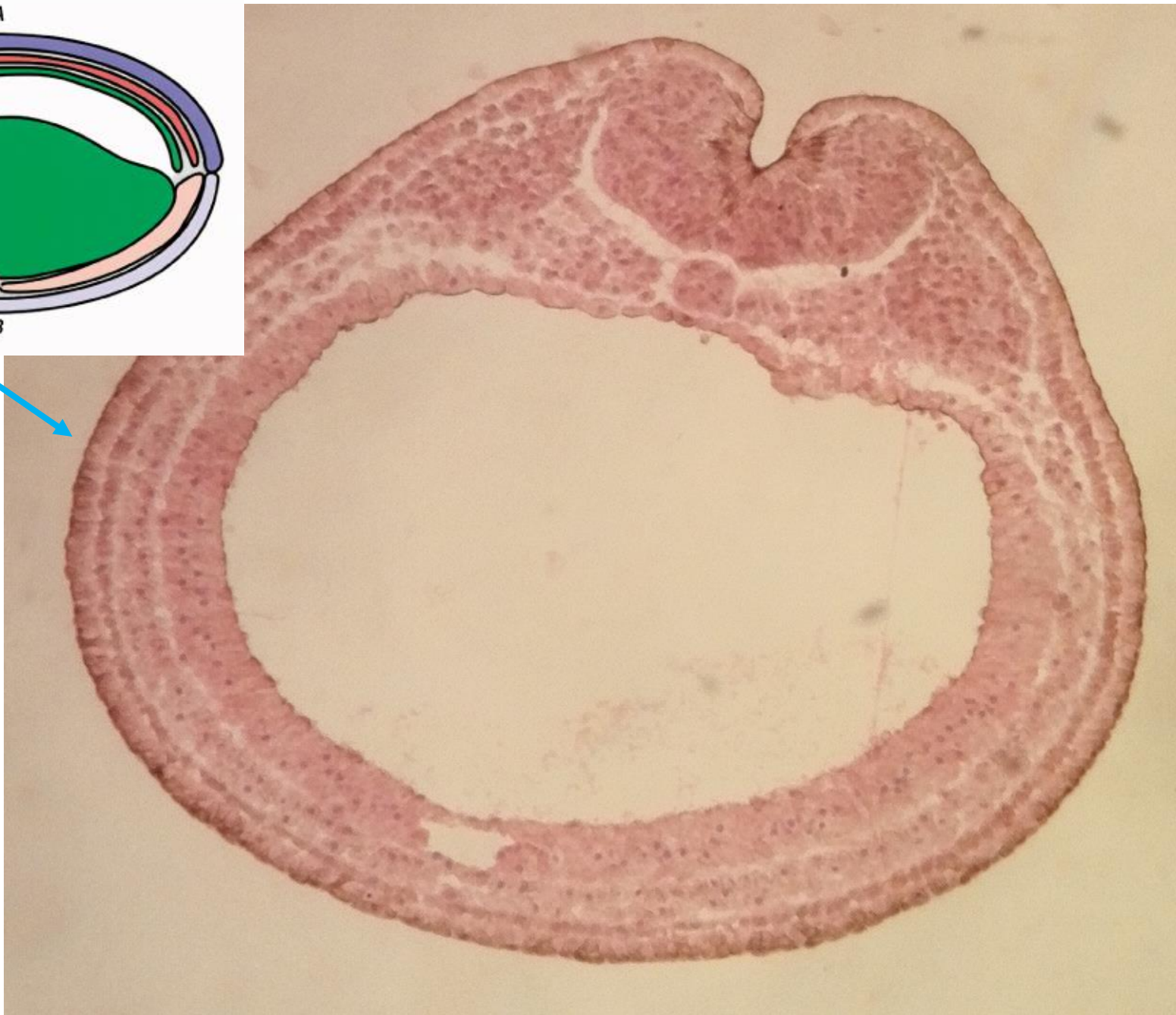
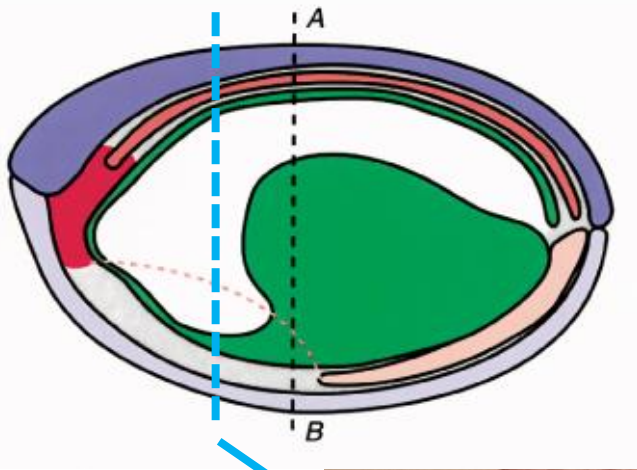


b) Stadio di doccia neurale

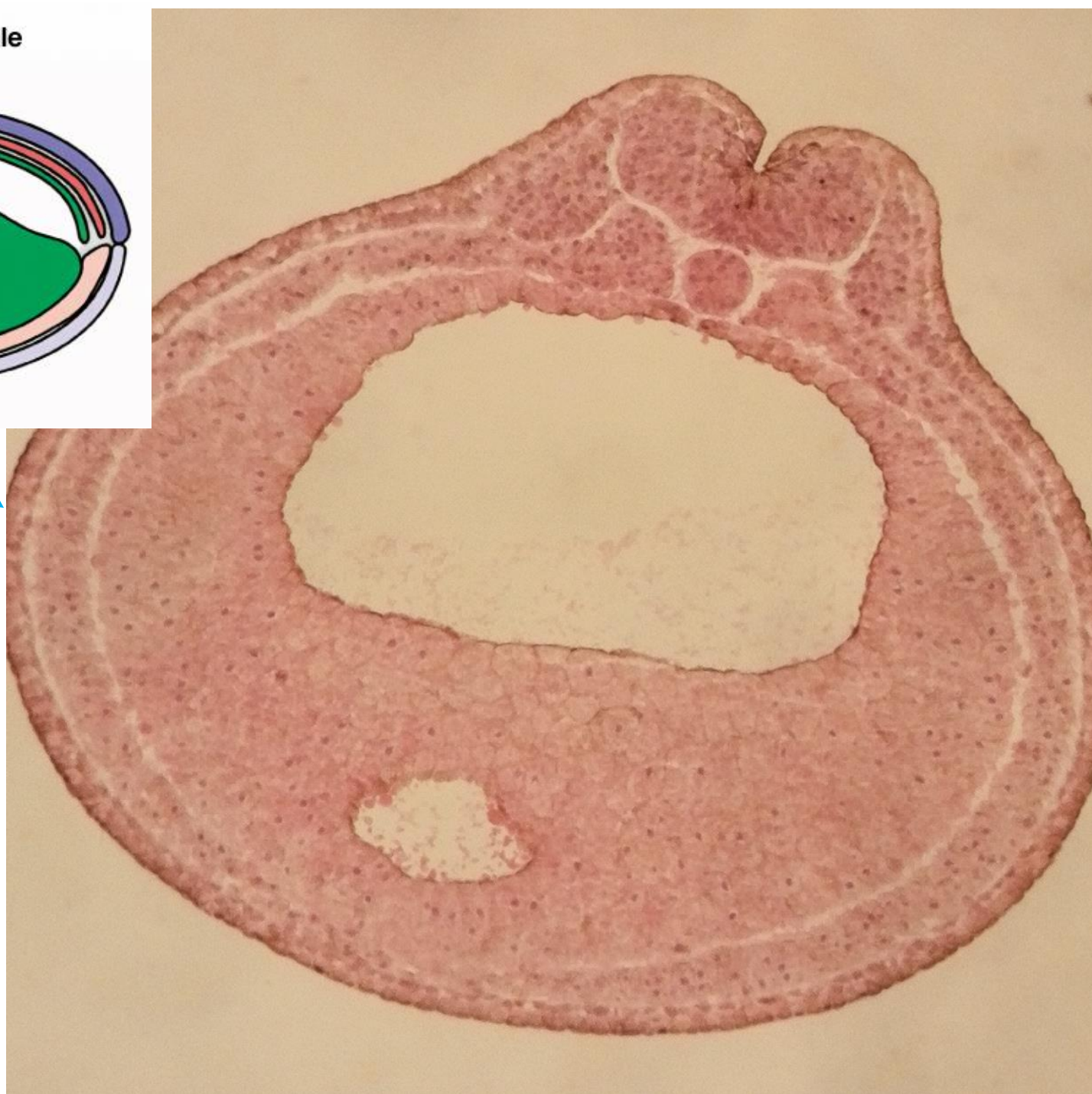
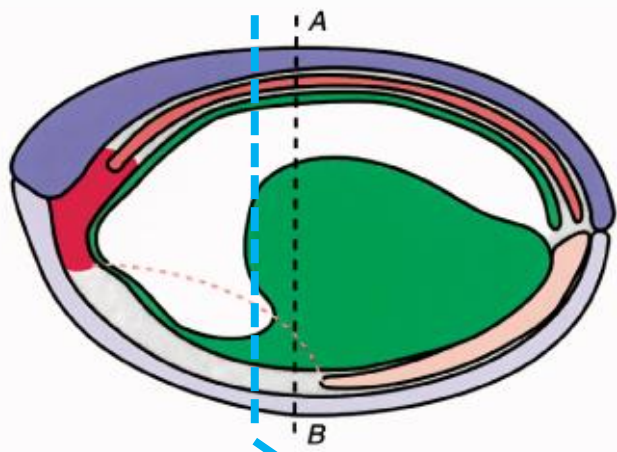




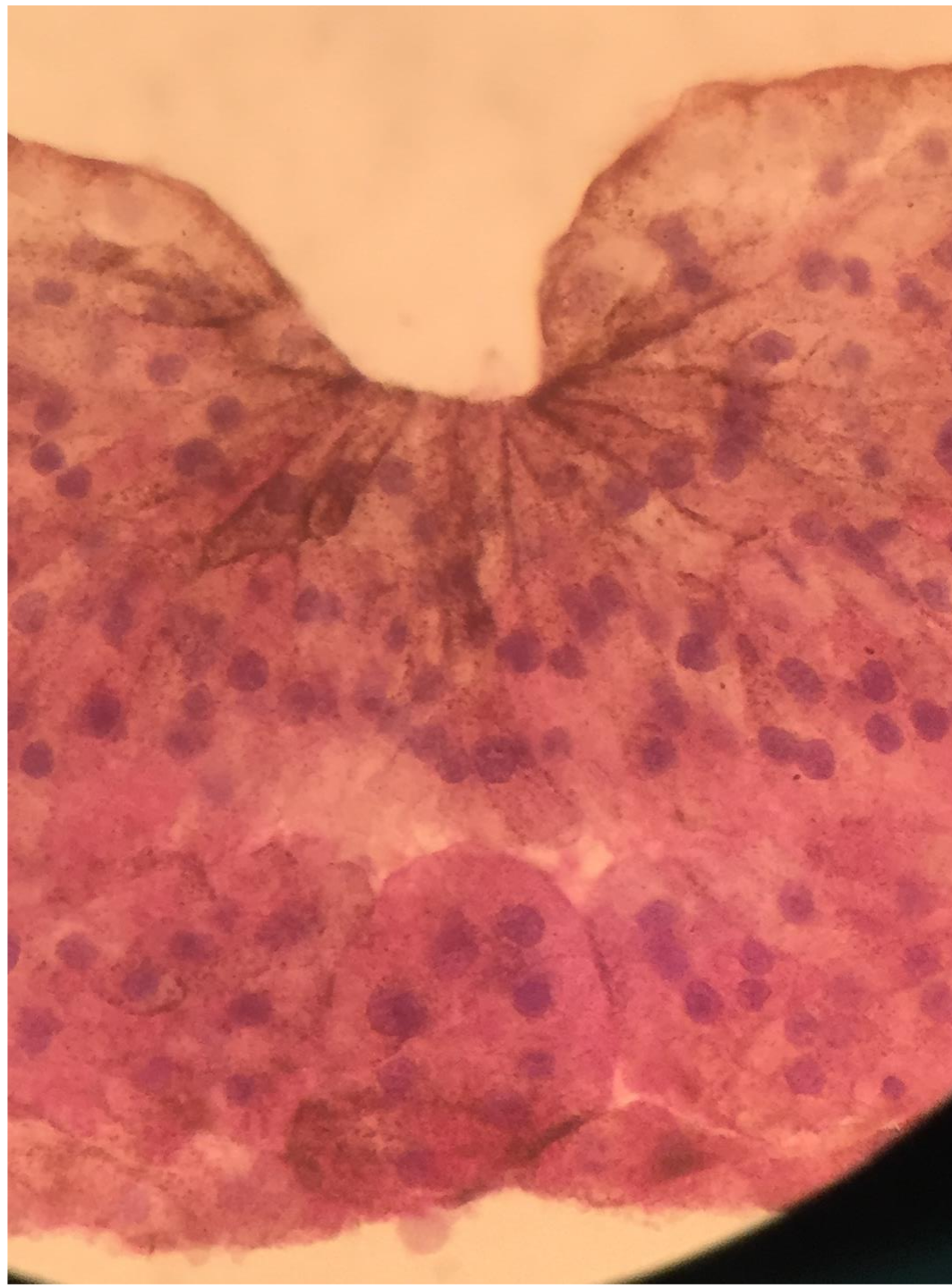
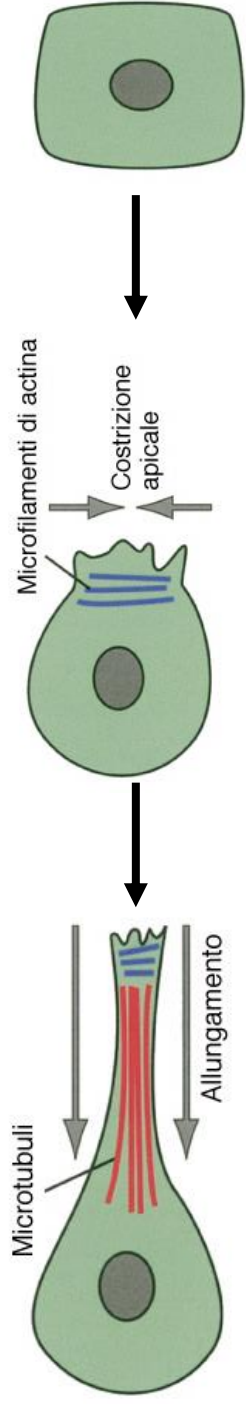
b) Stadio di doccia neurale



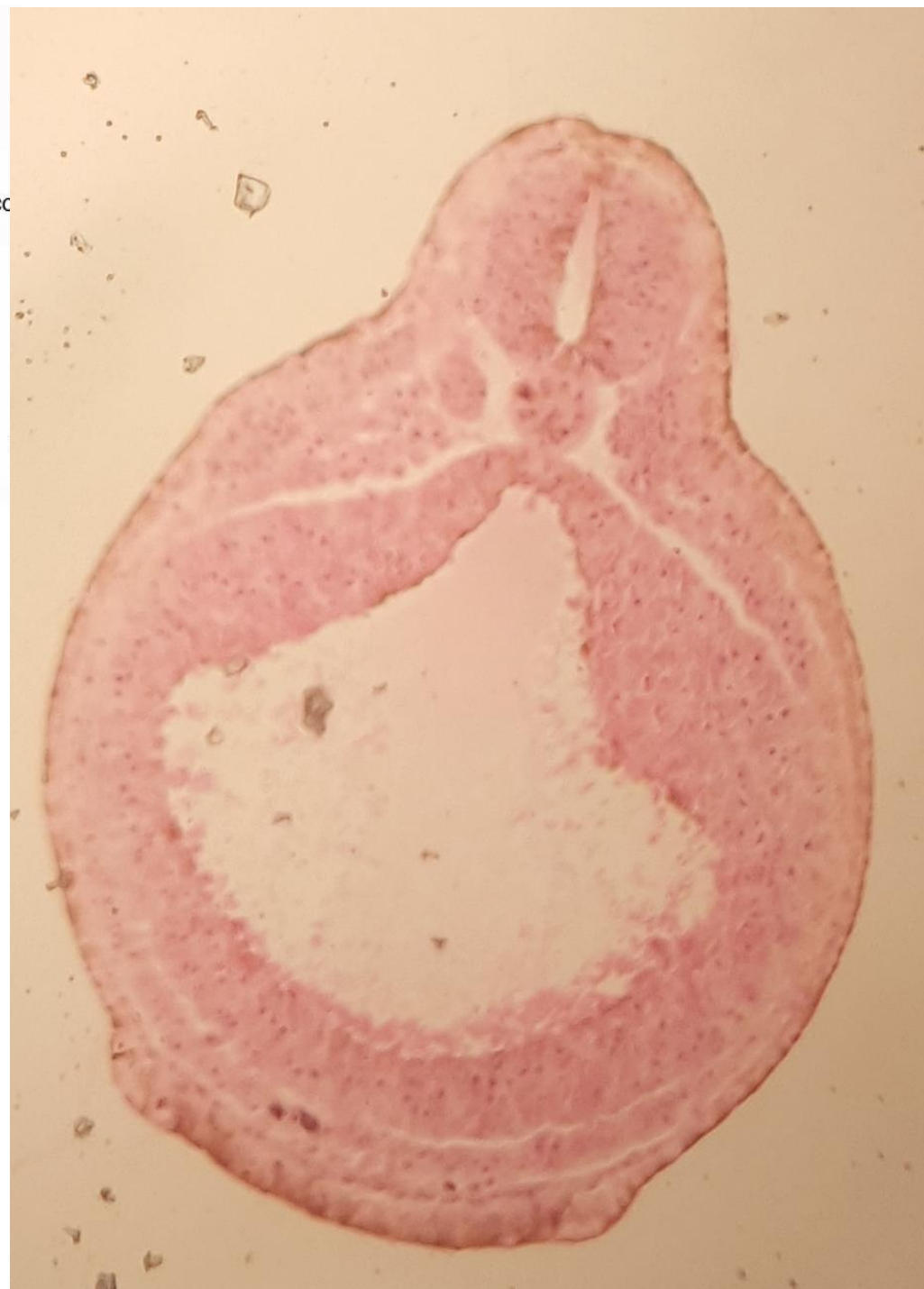
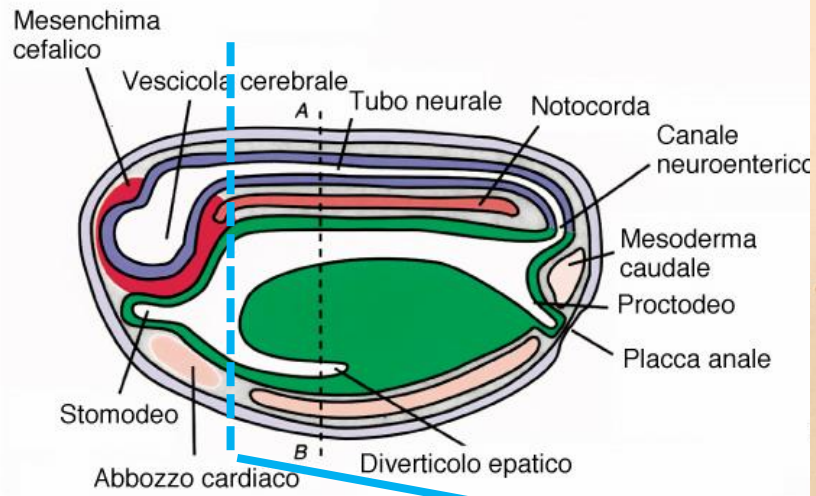
b) Stadio di doccia neurale



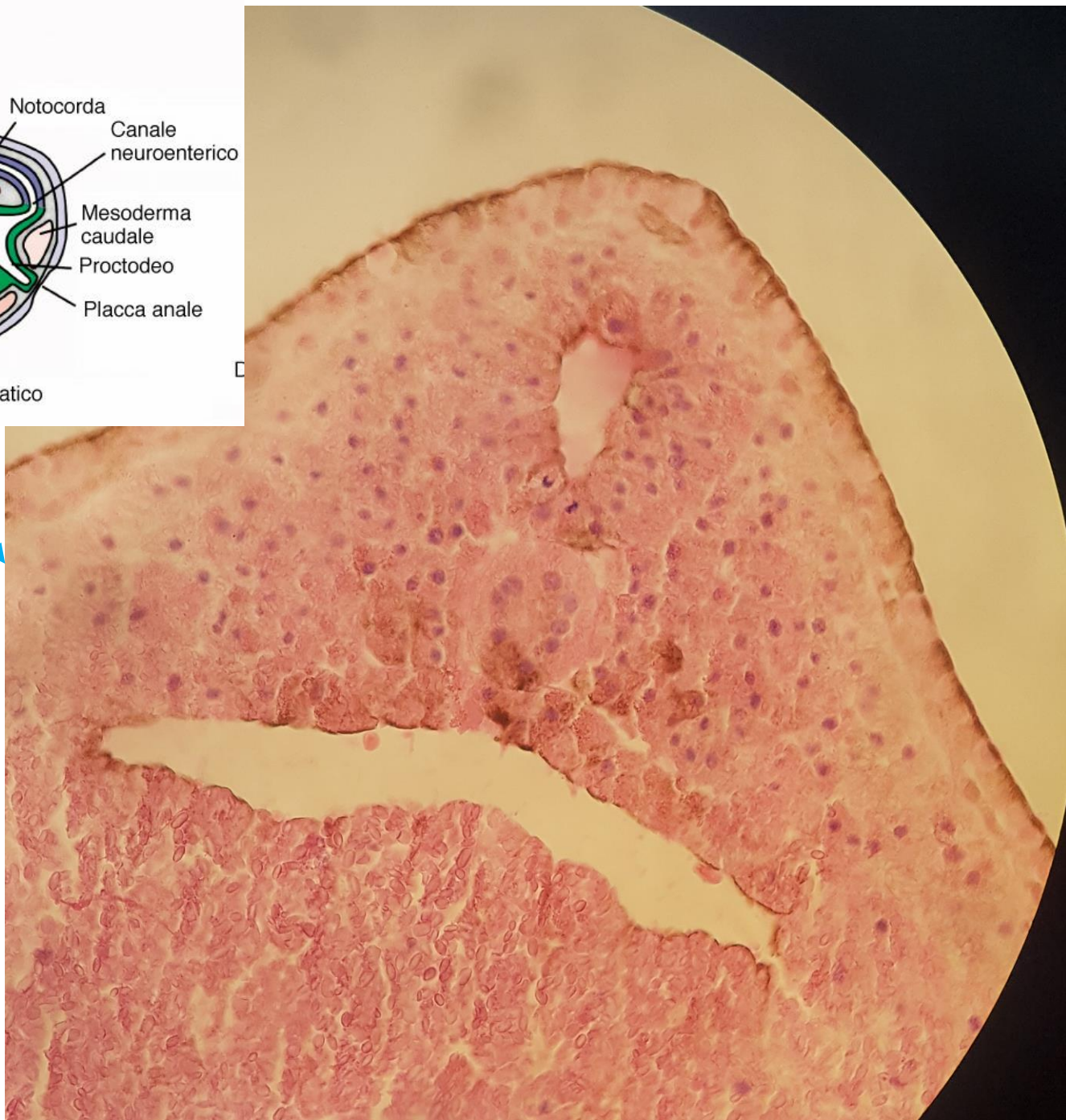
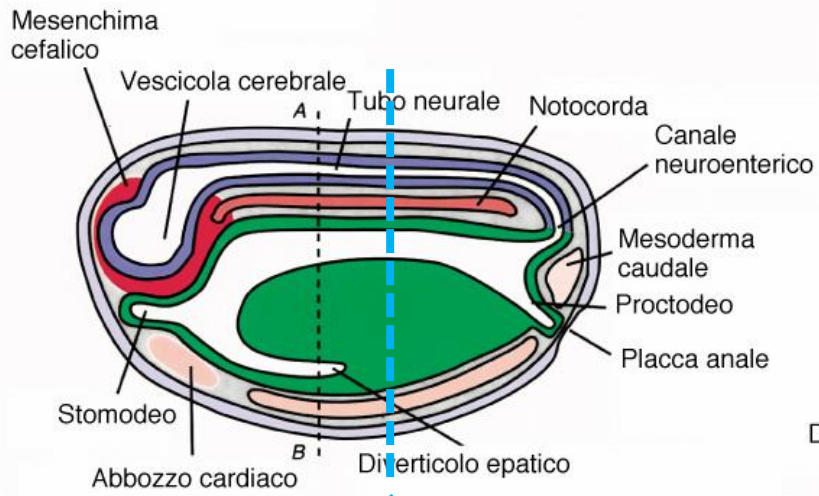


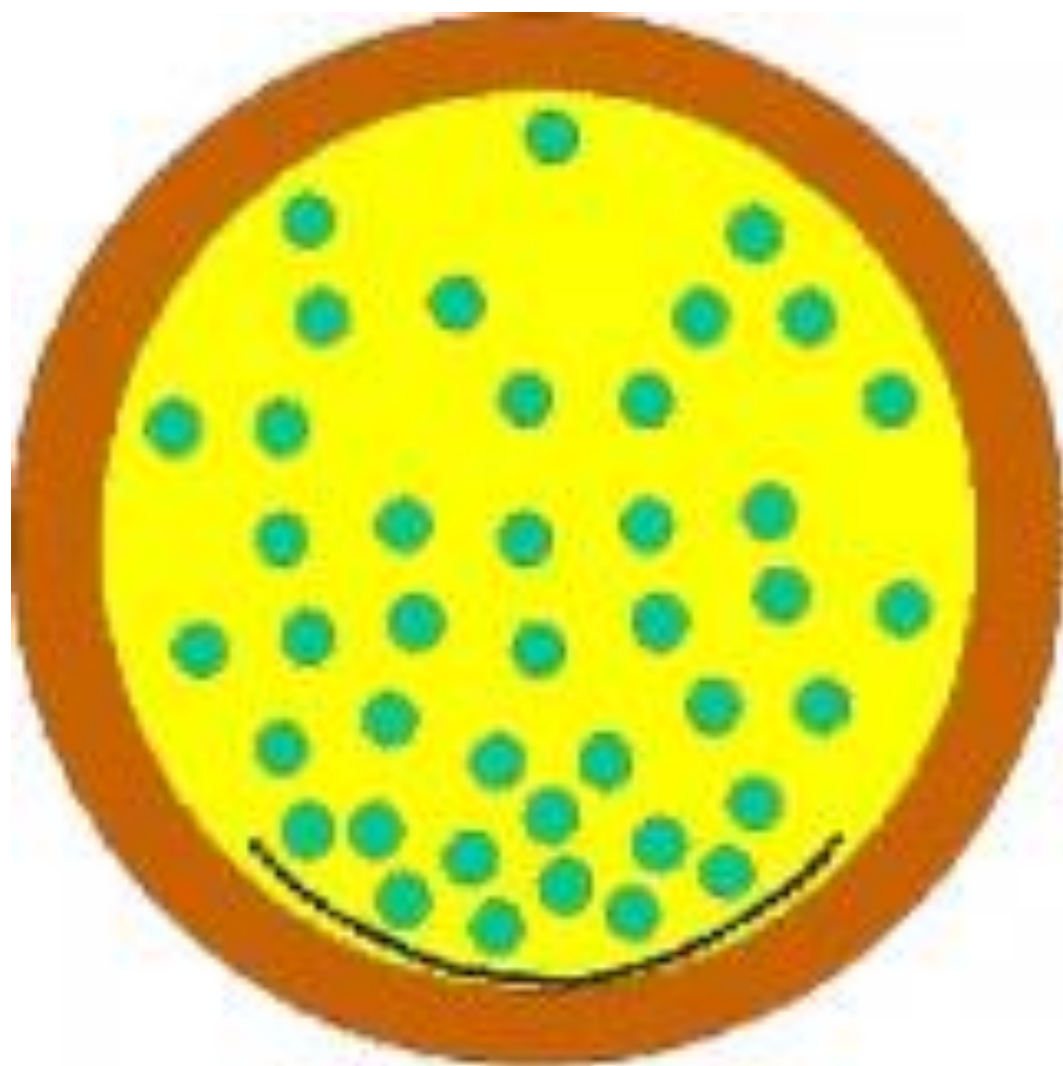


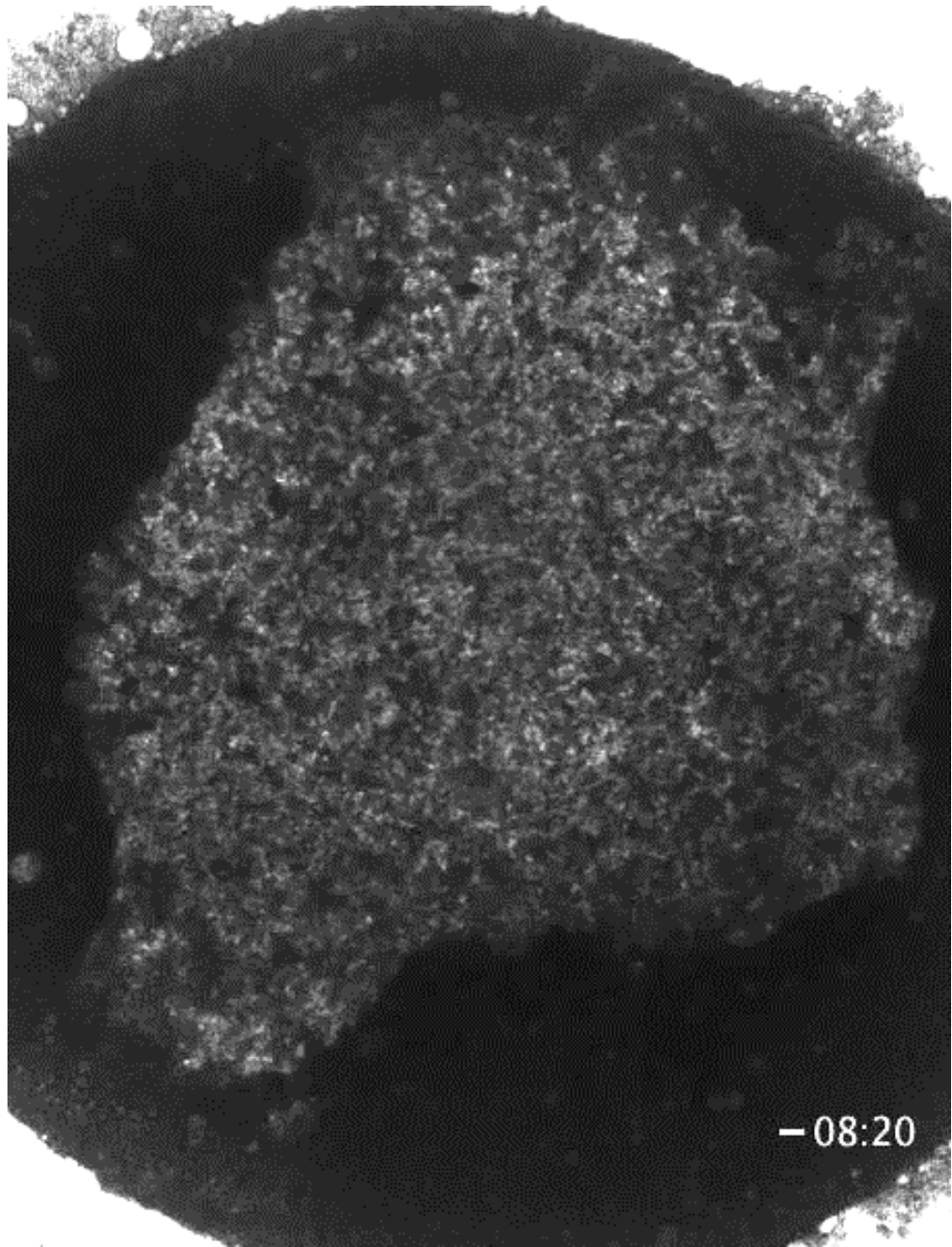
### c) Stadio di tubo neurale



### c) Stadio di tubo neurale

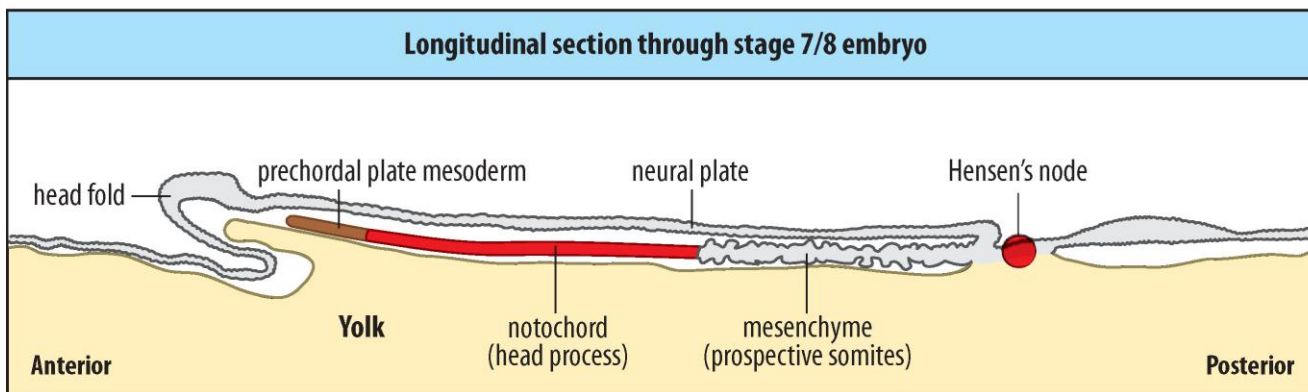
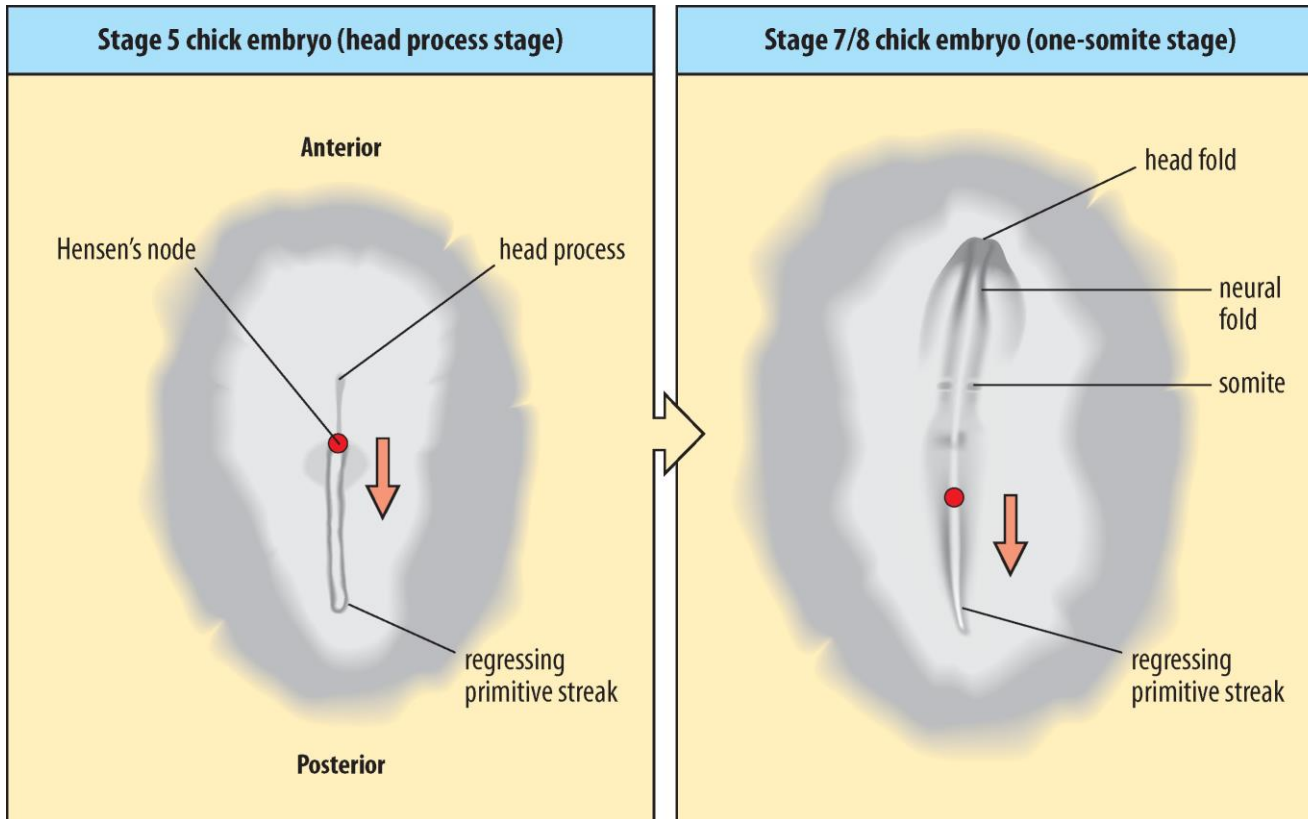






- 08:20

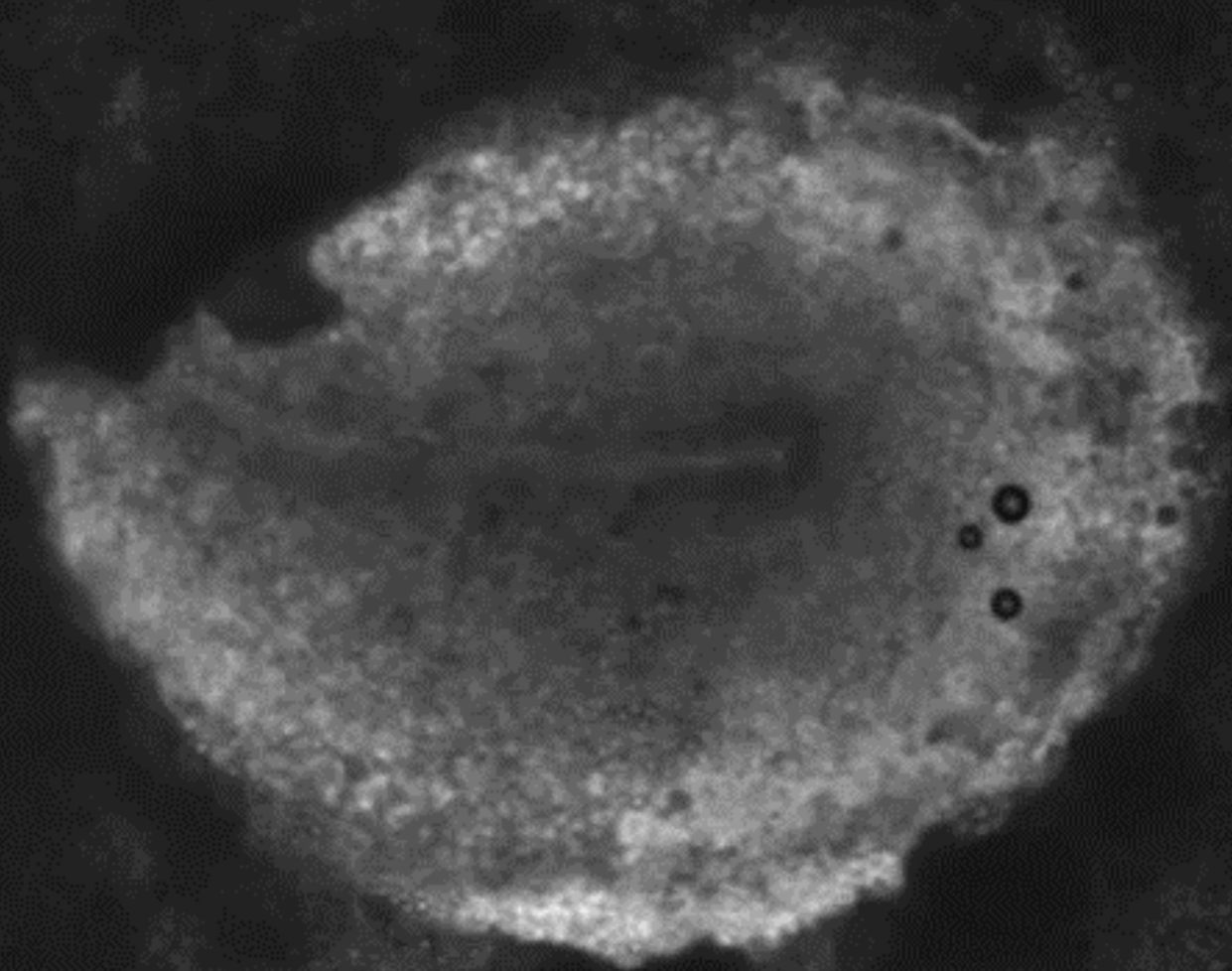




# Chicken Embryo - Somitogenesis

00:00:00

Dias AS, de Almeida I, Belmonte JM, Glazier JA, Stern CD.  
Science. 2014 Feb 14;343(6172):791-5



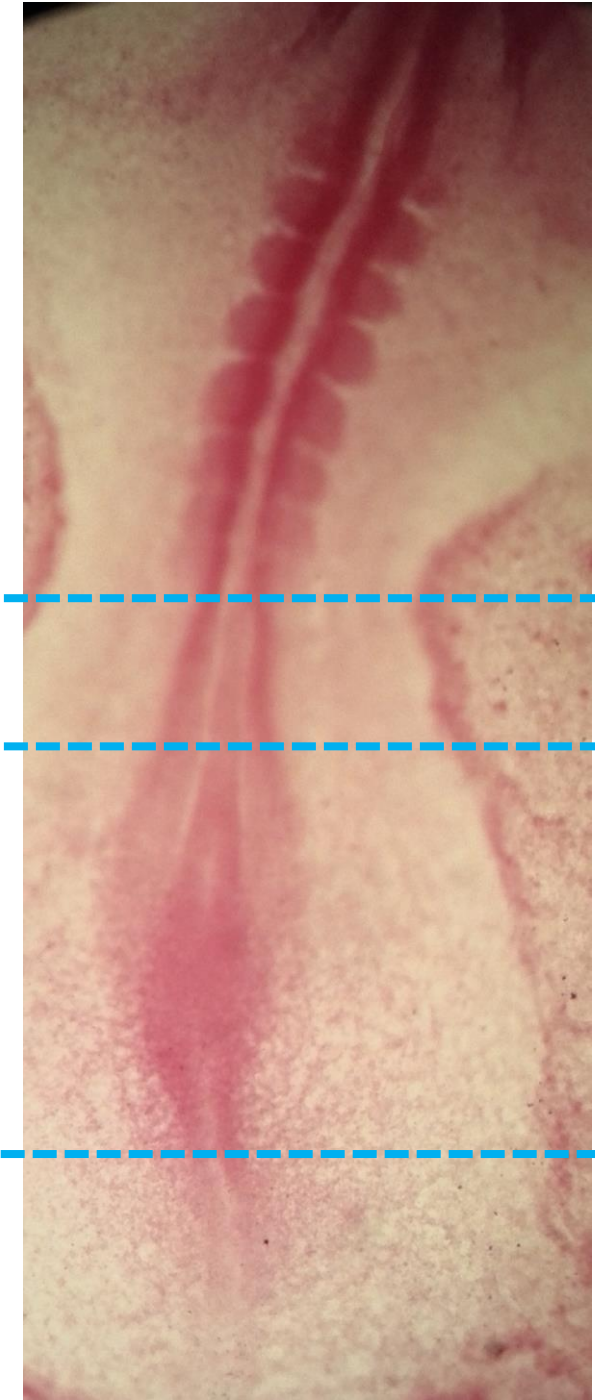
PMID: 24407478





1

2



3

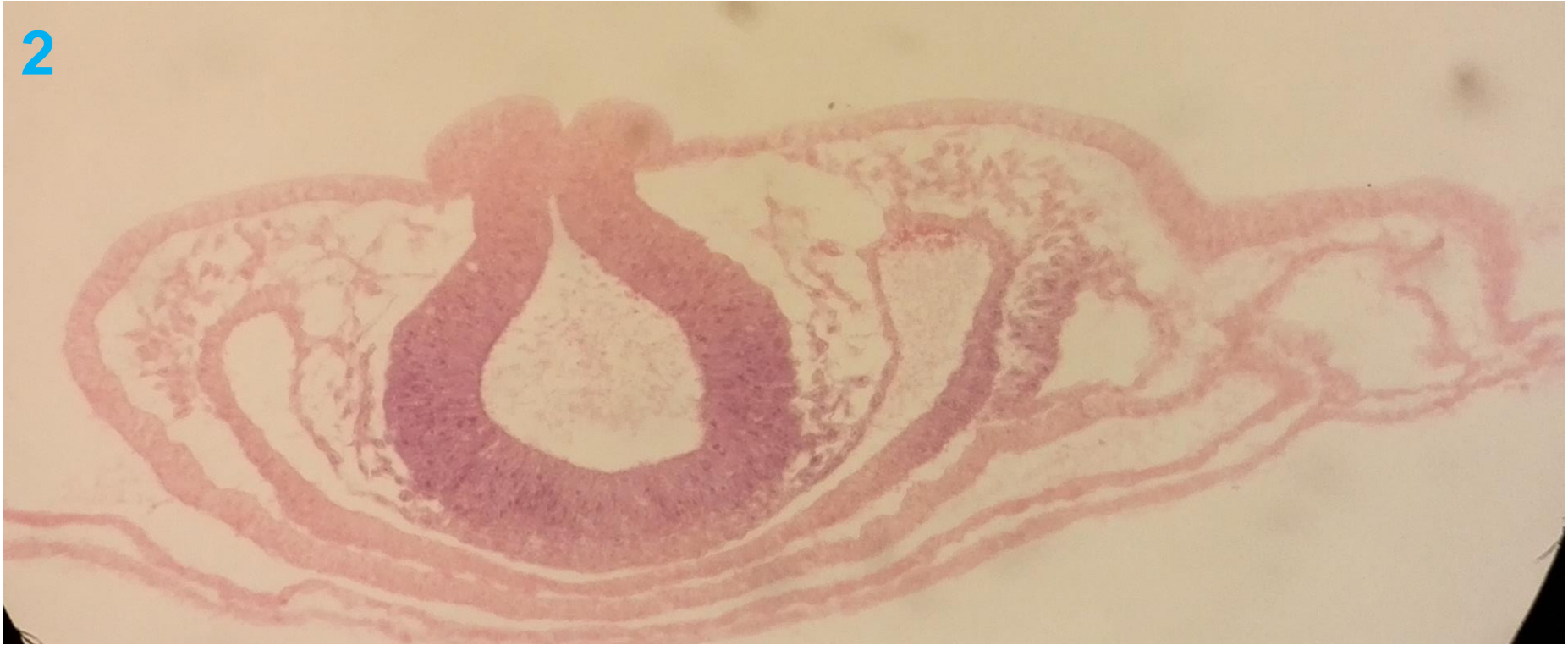
4

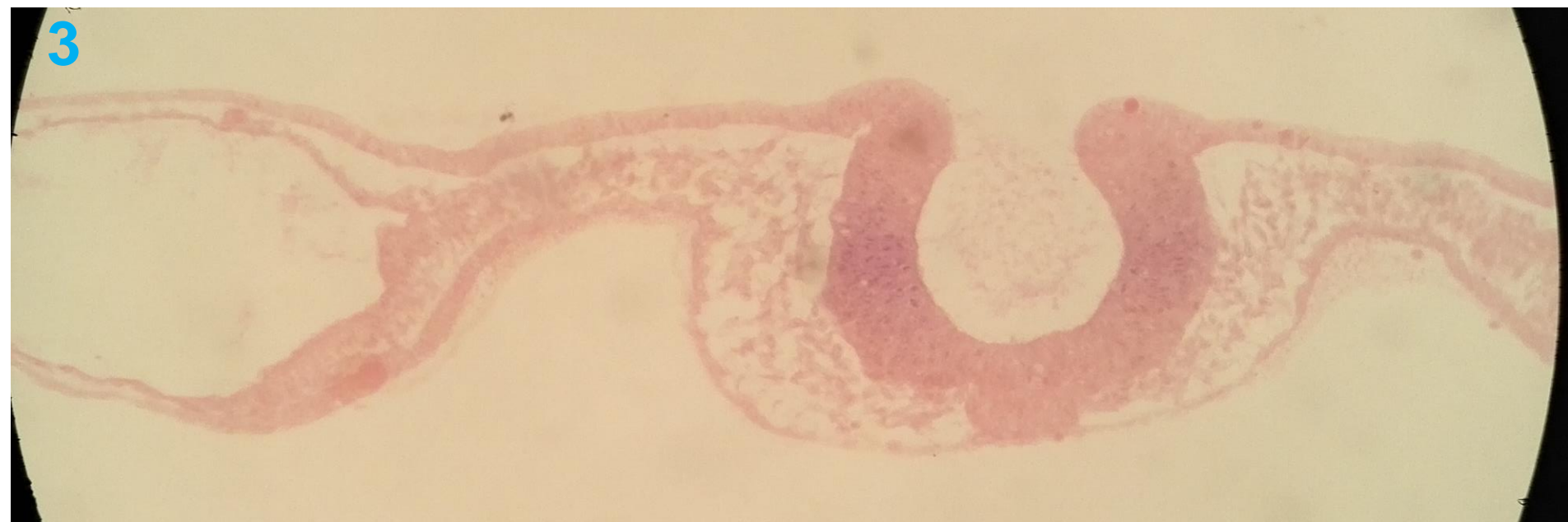
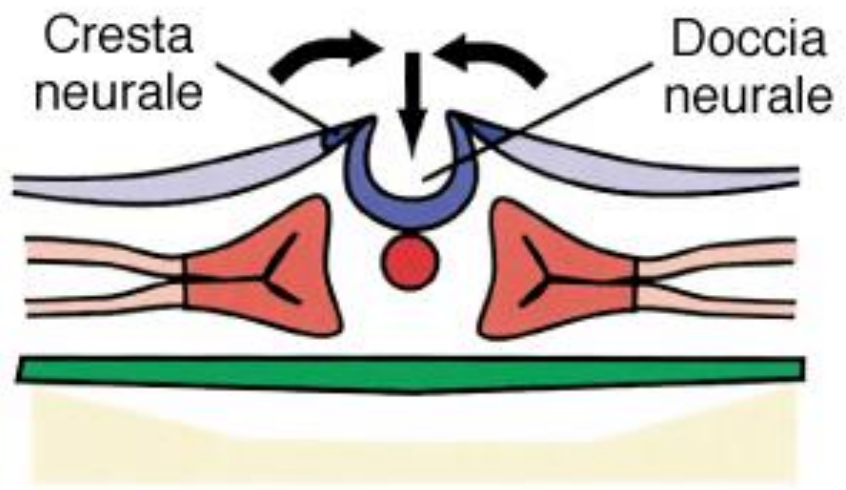
5

1

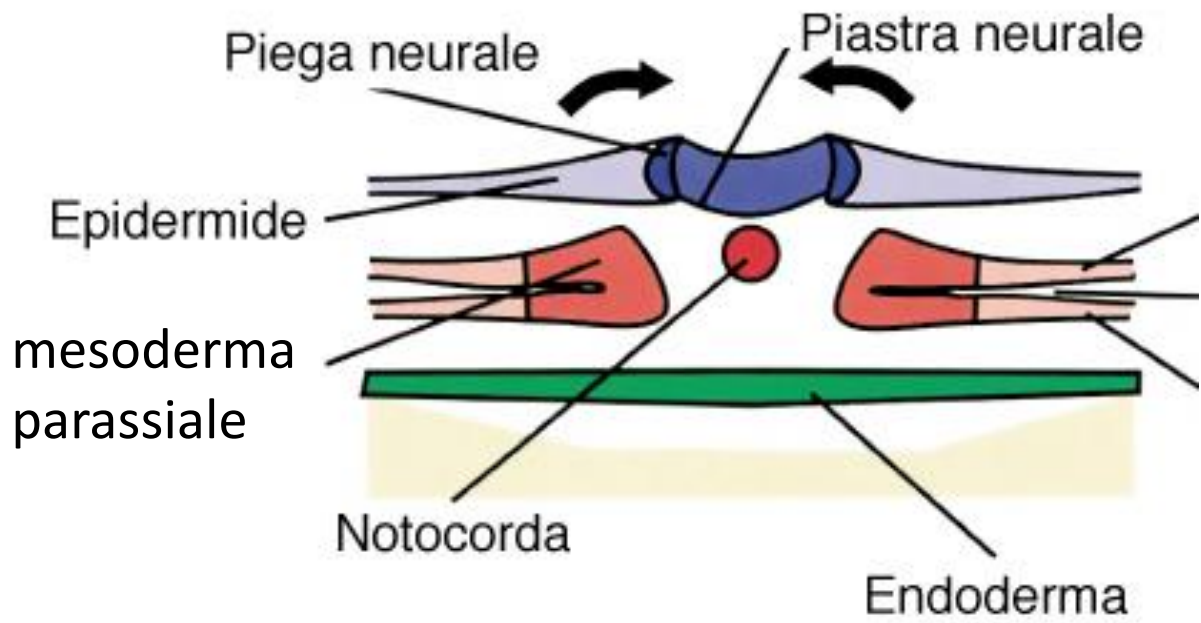


2

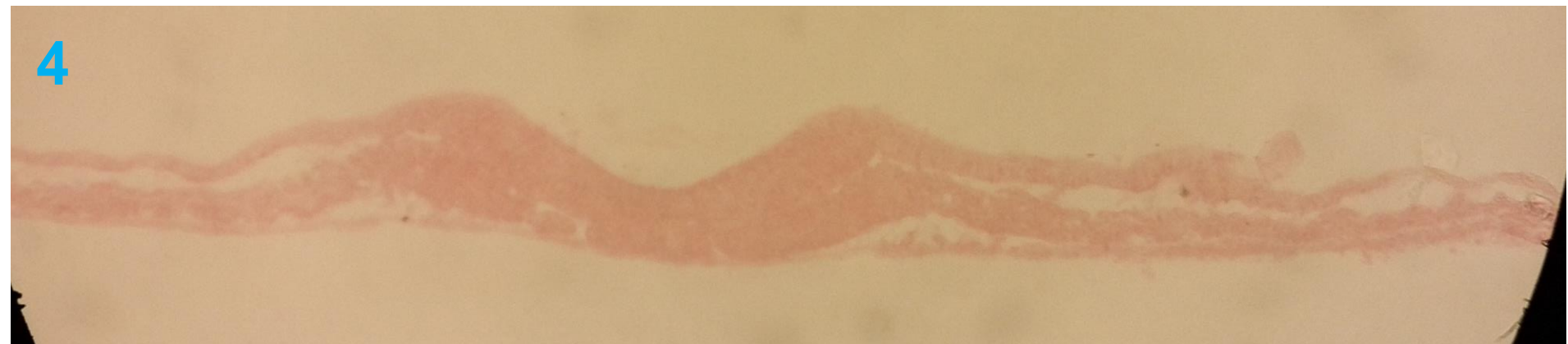






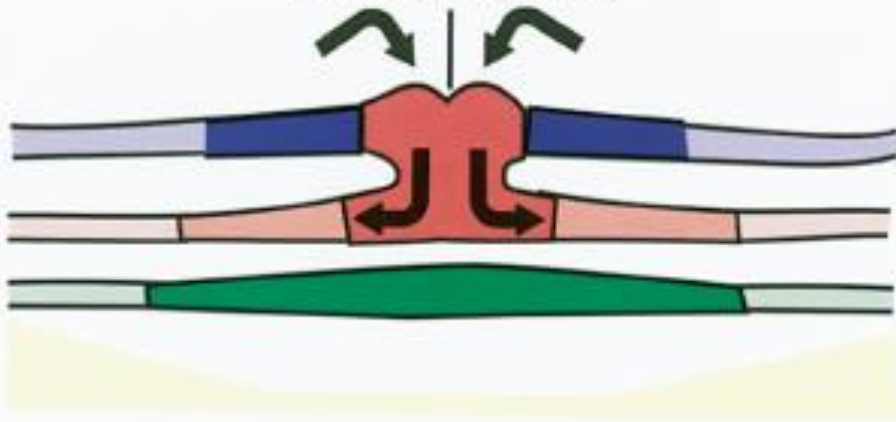


4

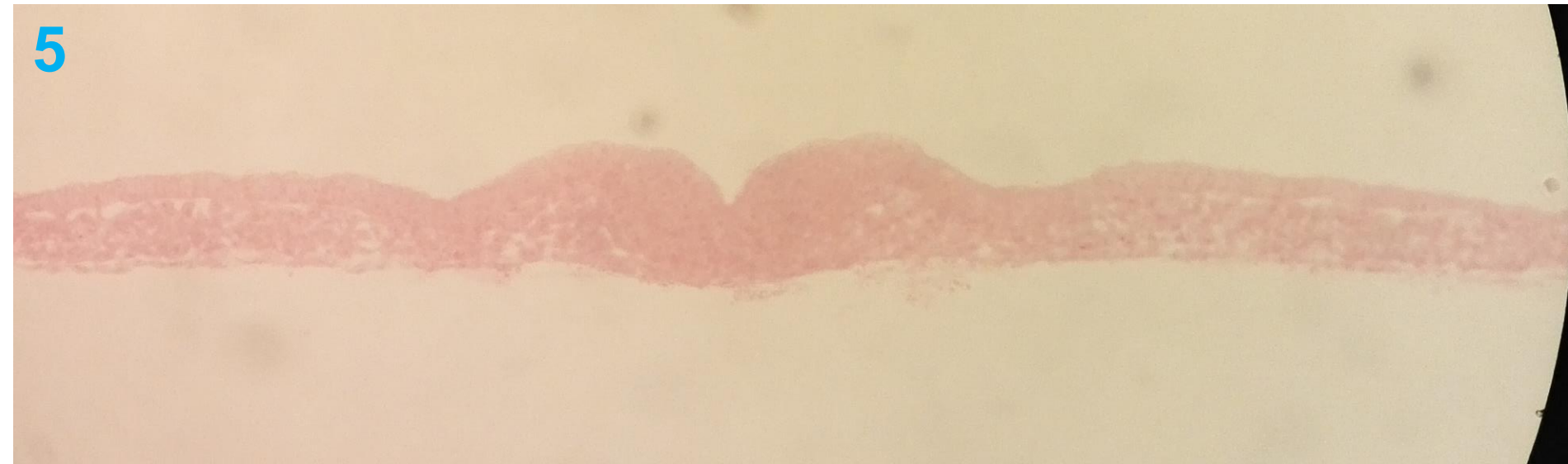


Sezione trasversale del tronco

Linea primitiva



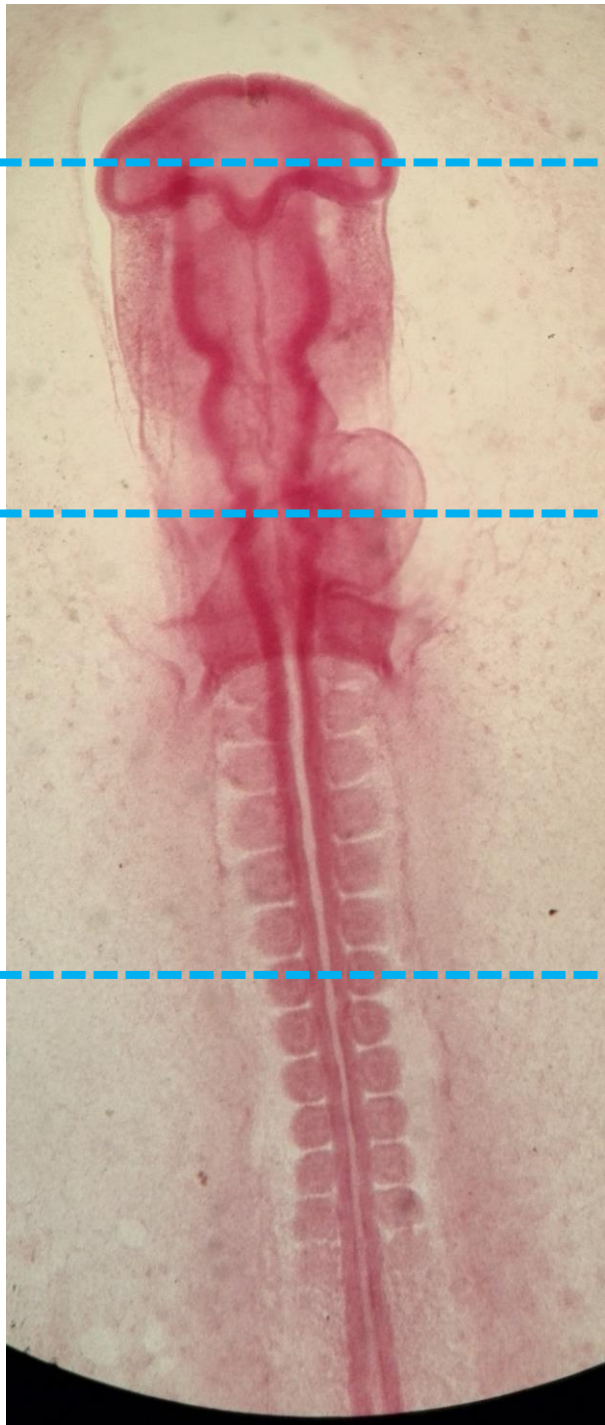
5



1

2

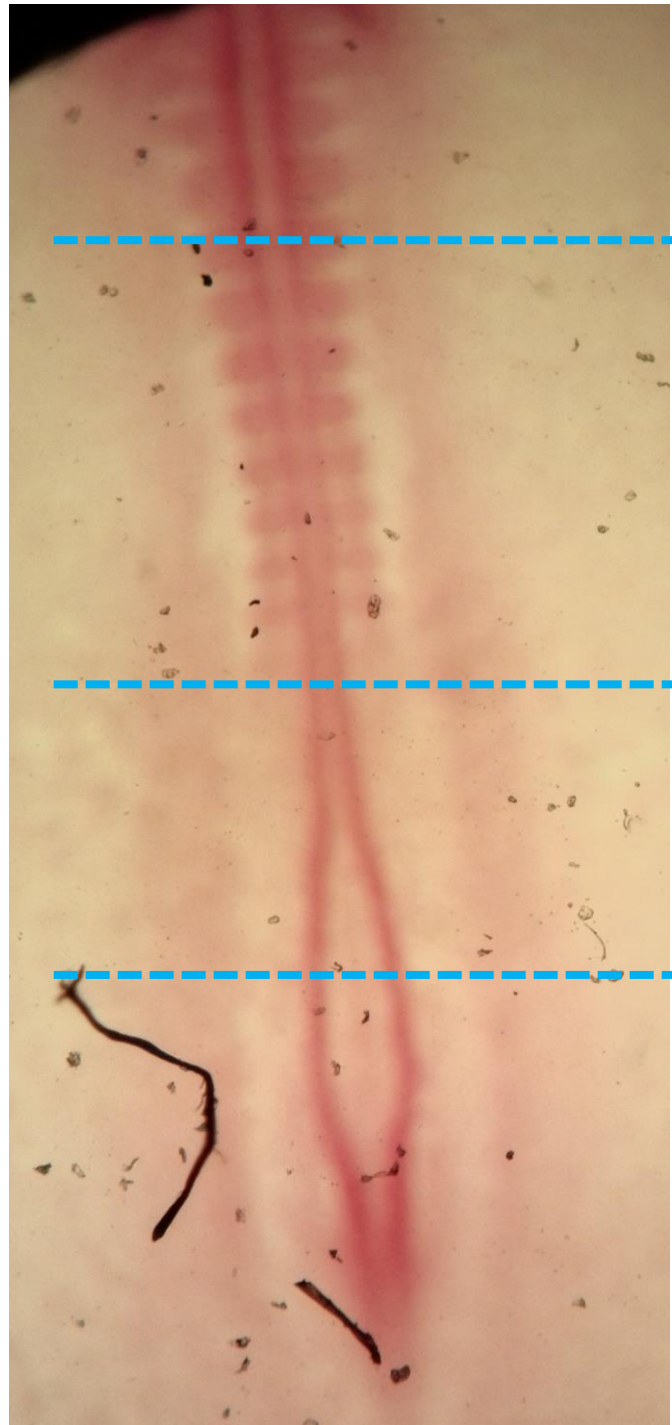
3



4

5

6



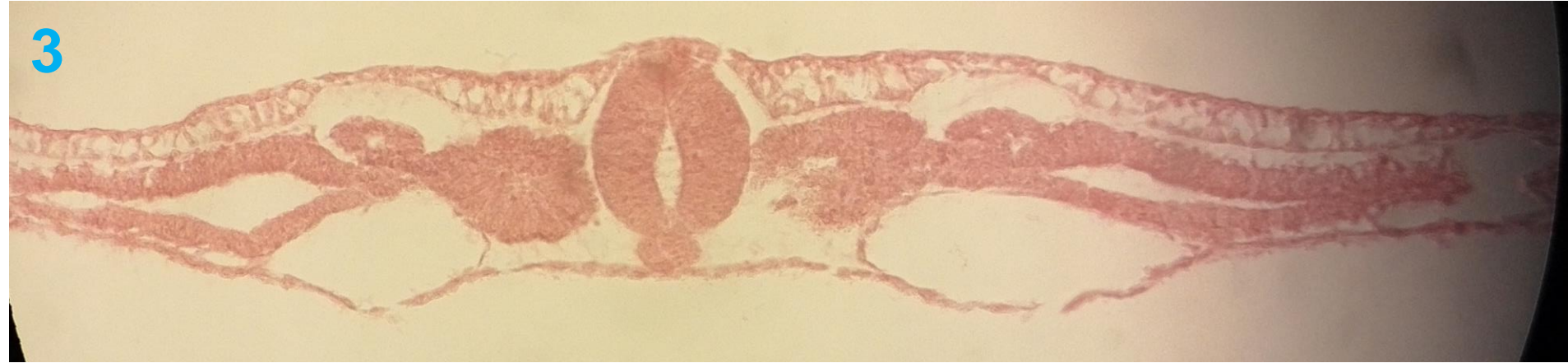
1

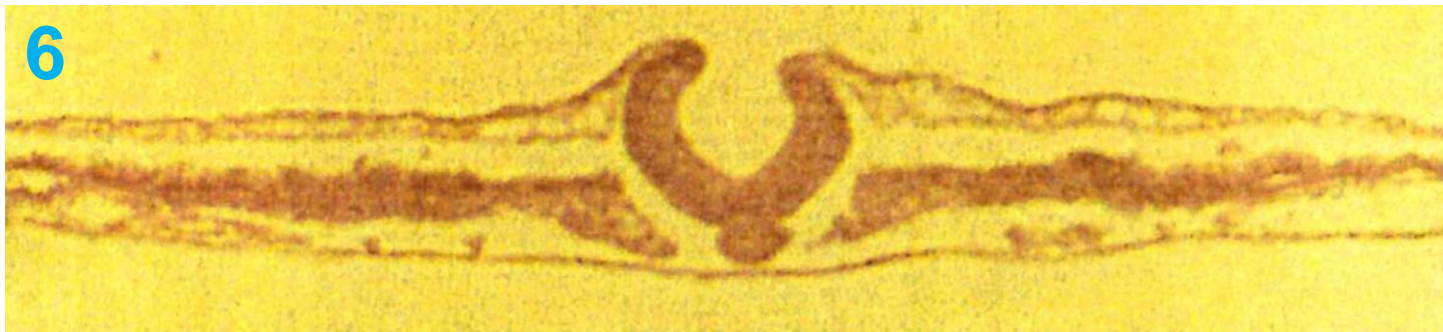
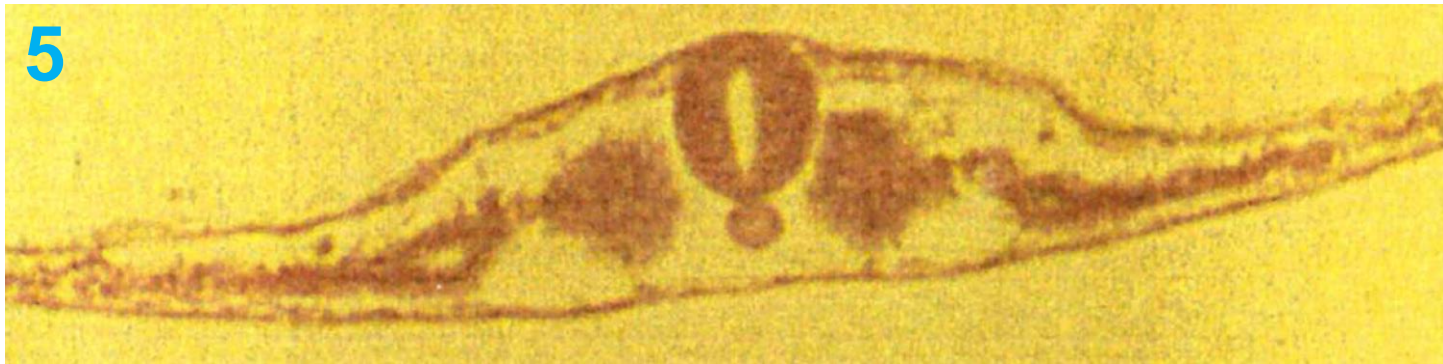
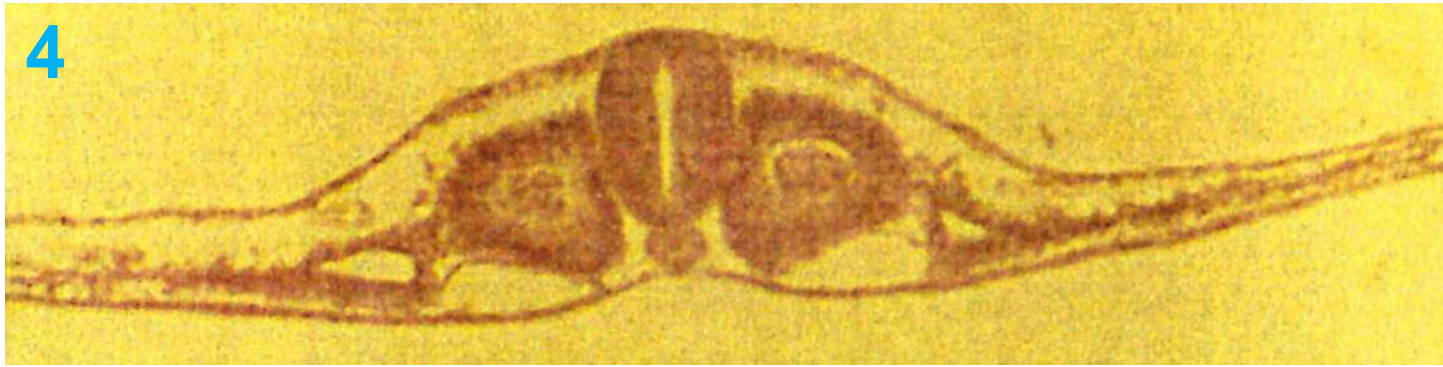


2



3





A  
P





# Chick gastrulation

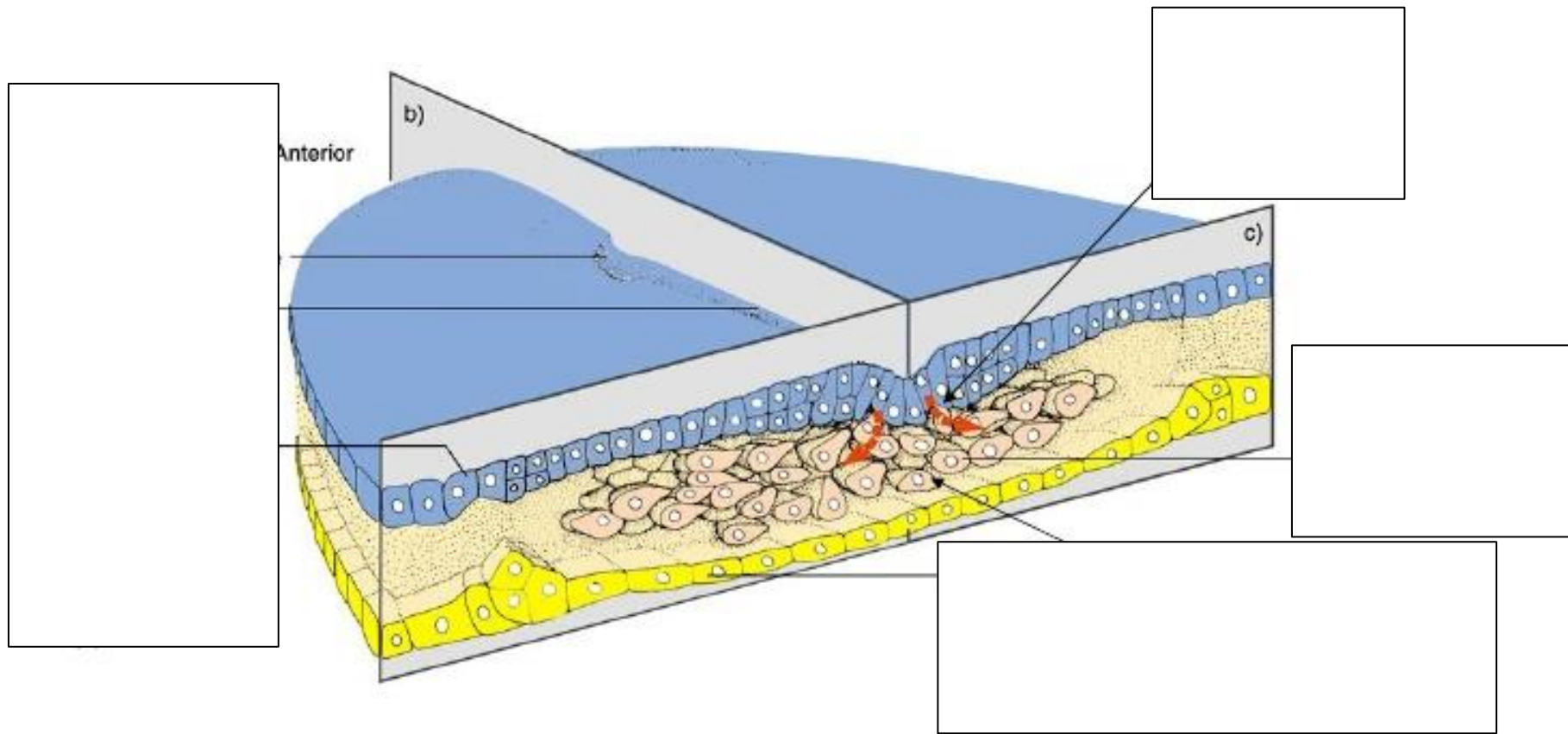


Figure 10.24

# Chick gastrulation

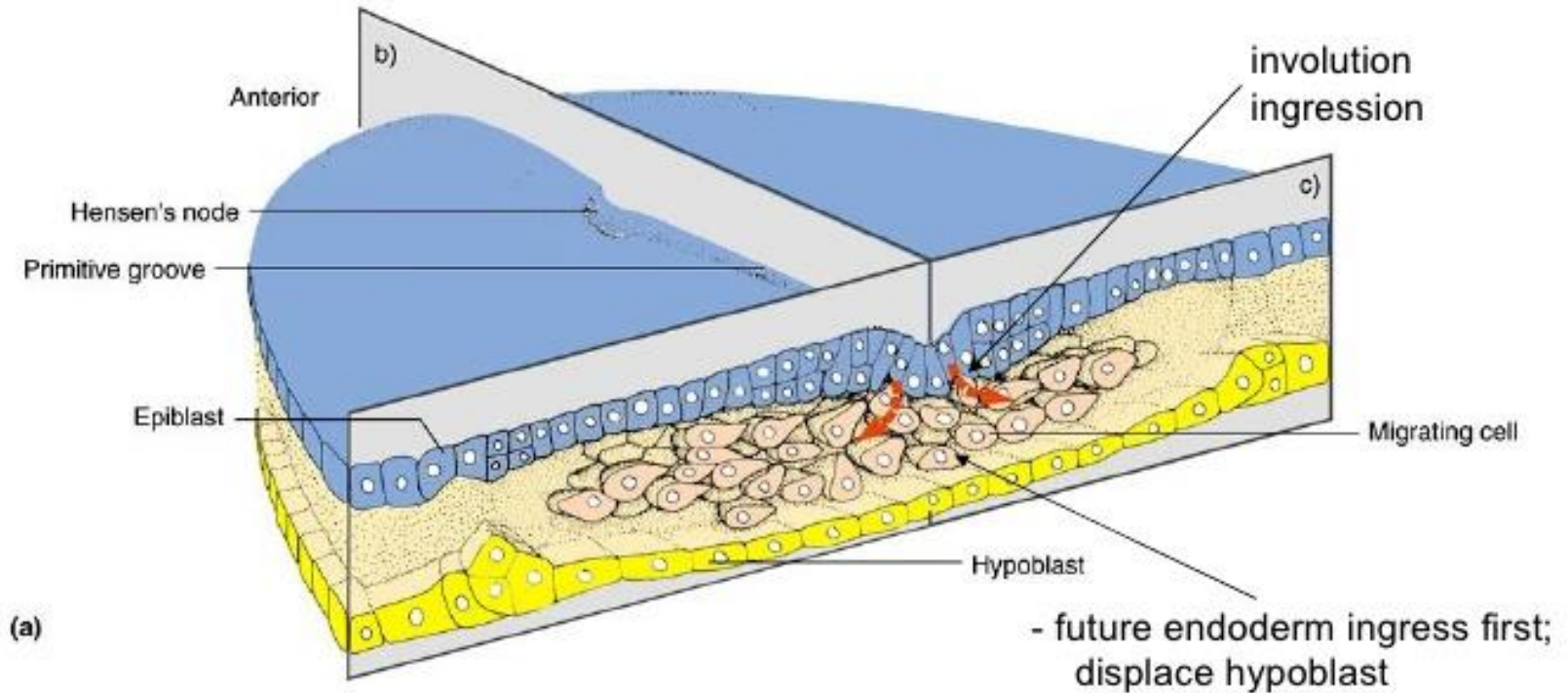
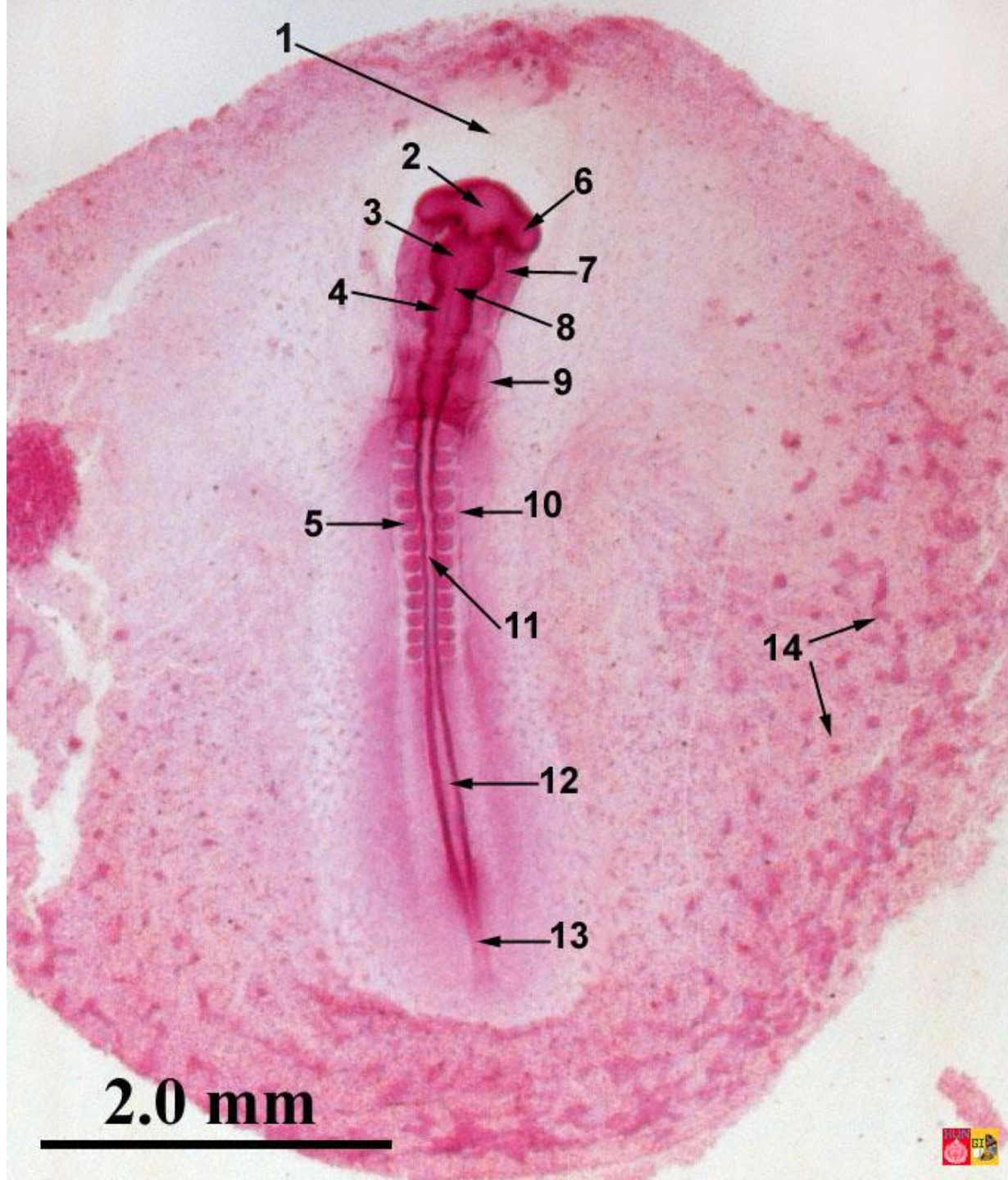
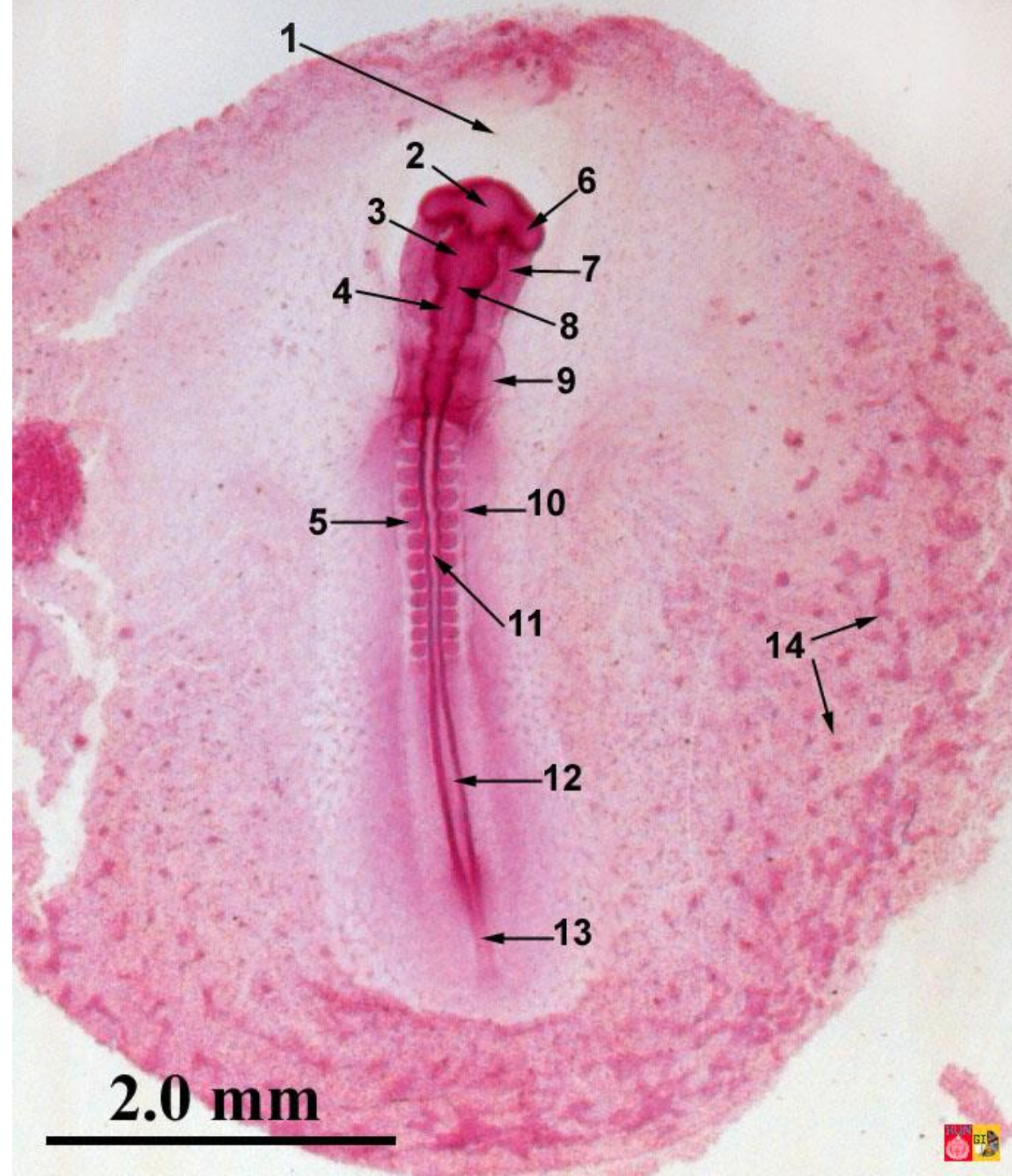


Figure 10.24



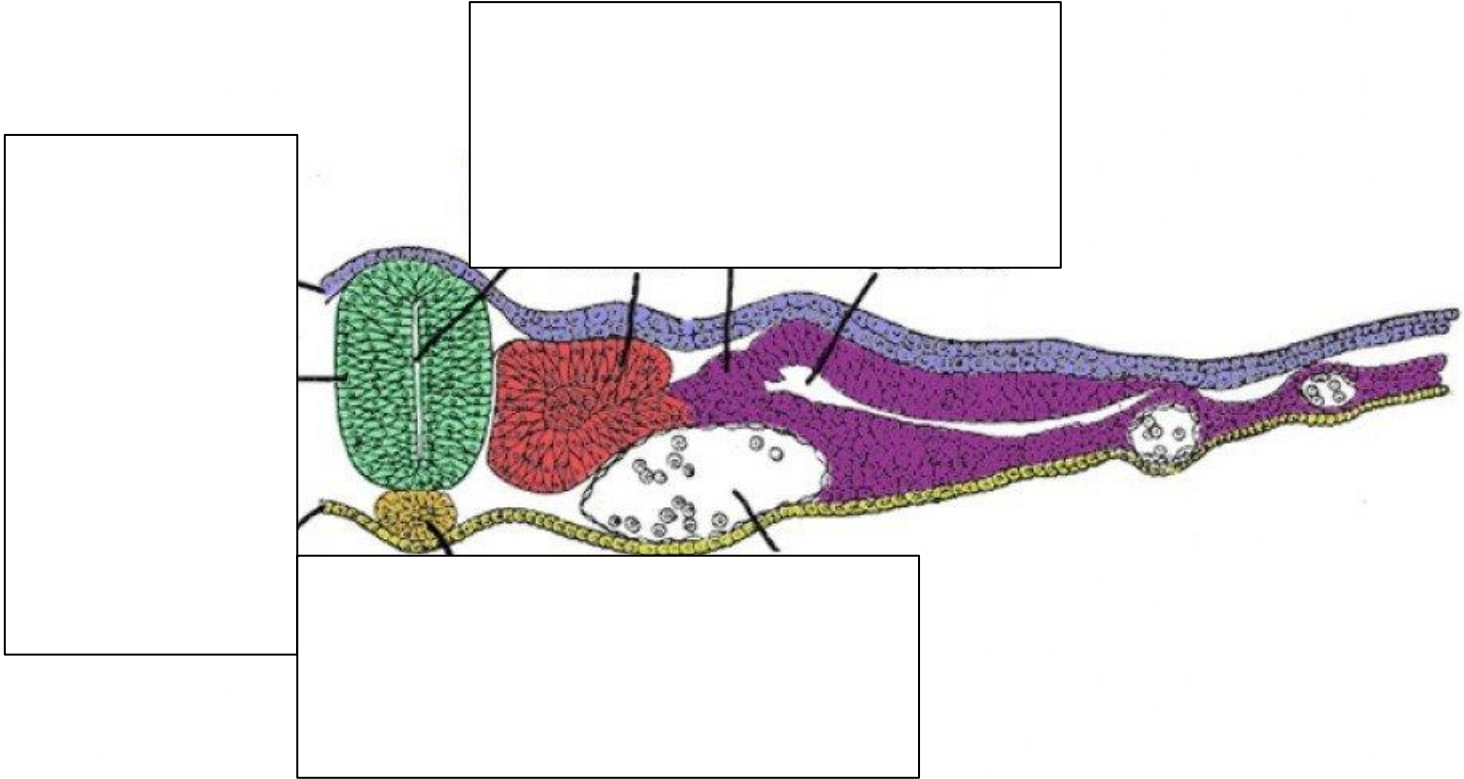


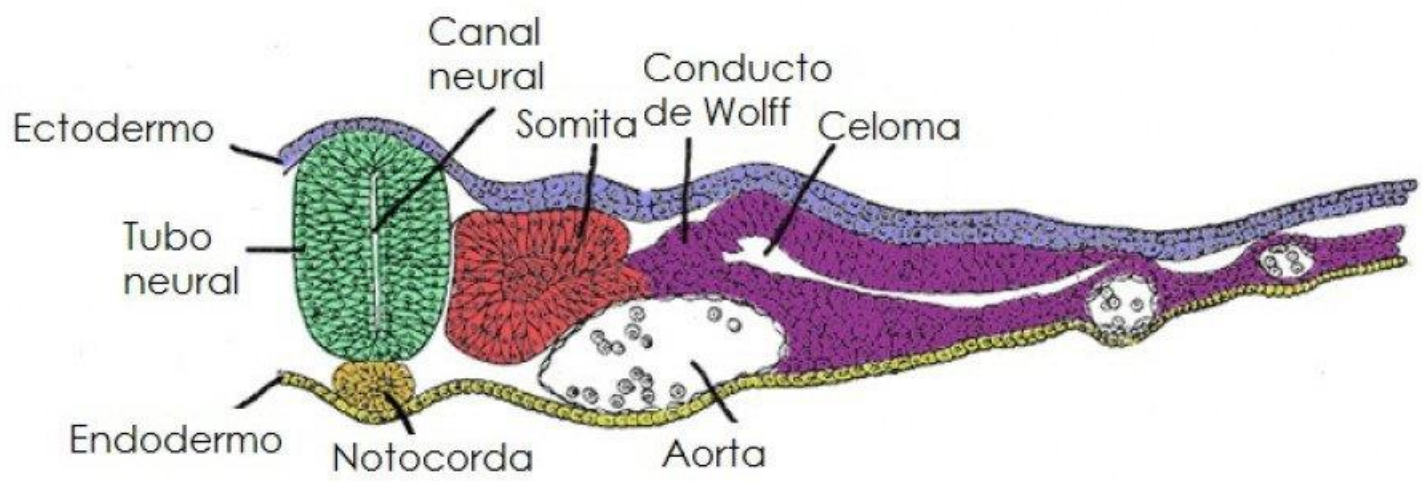
**Embryology of chicken 33 hours after fertilization:  
stained whole mount preparation**

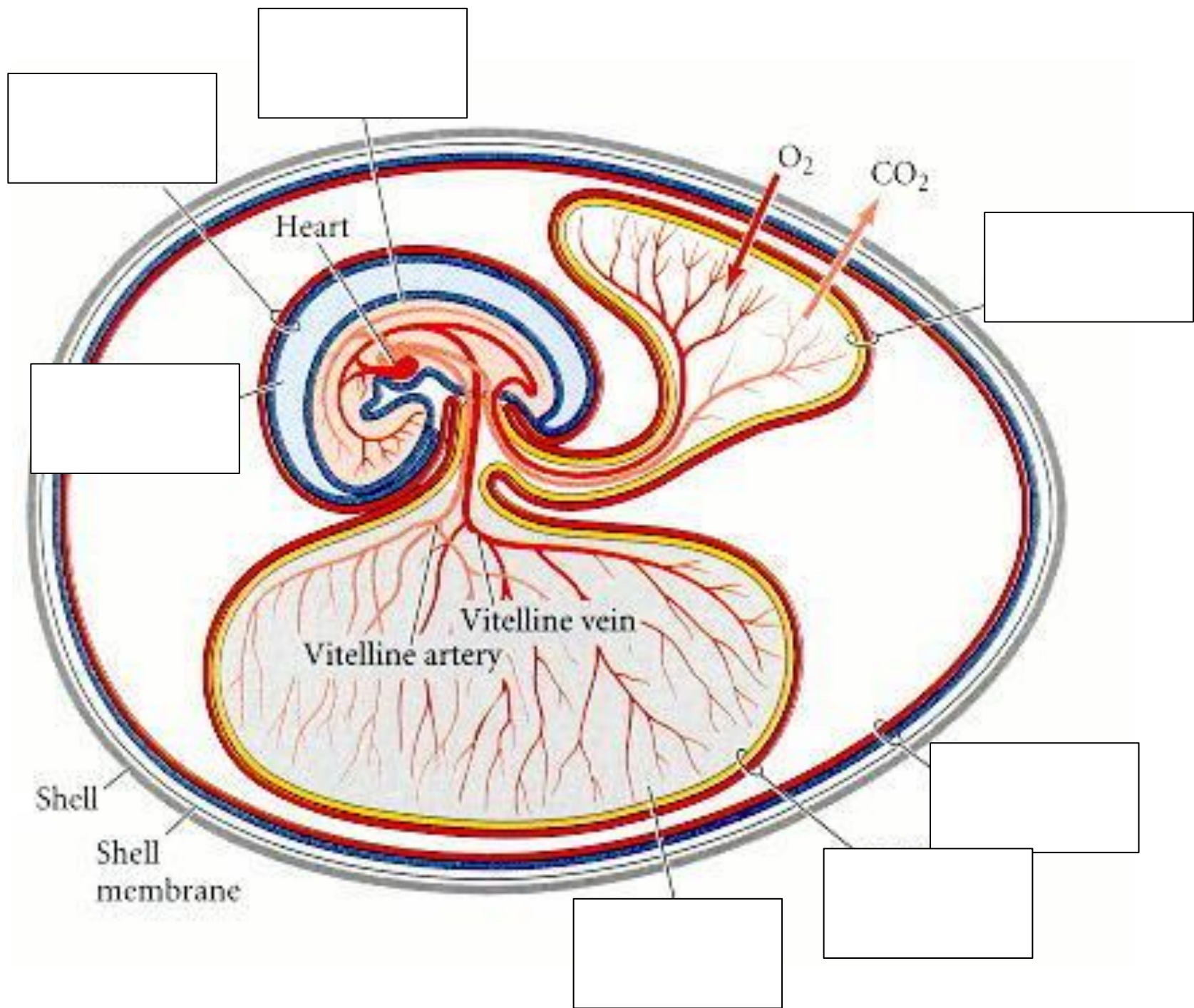
- 1 = Proamnion,
- 2 = Prosencephalon,
- 3 = Mesencephalon,
- 4 = Rhombencephalon,
- 5 = Somite, 6 = Eye vesicle,
- 7 = Foregut, 8 = Chorda (translucent), 9 = Heart,
- 10 = Lateral mesoderm,
- 11 = Spine, 12 = Sinus rhomboidalis, 13 = Primitive streak,
- 14 = Blood islands

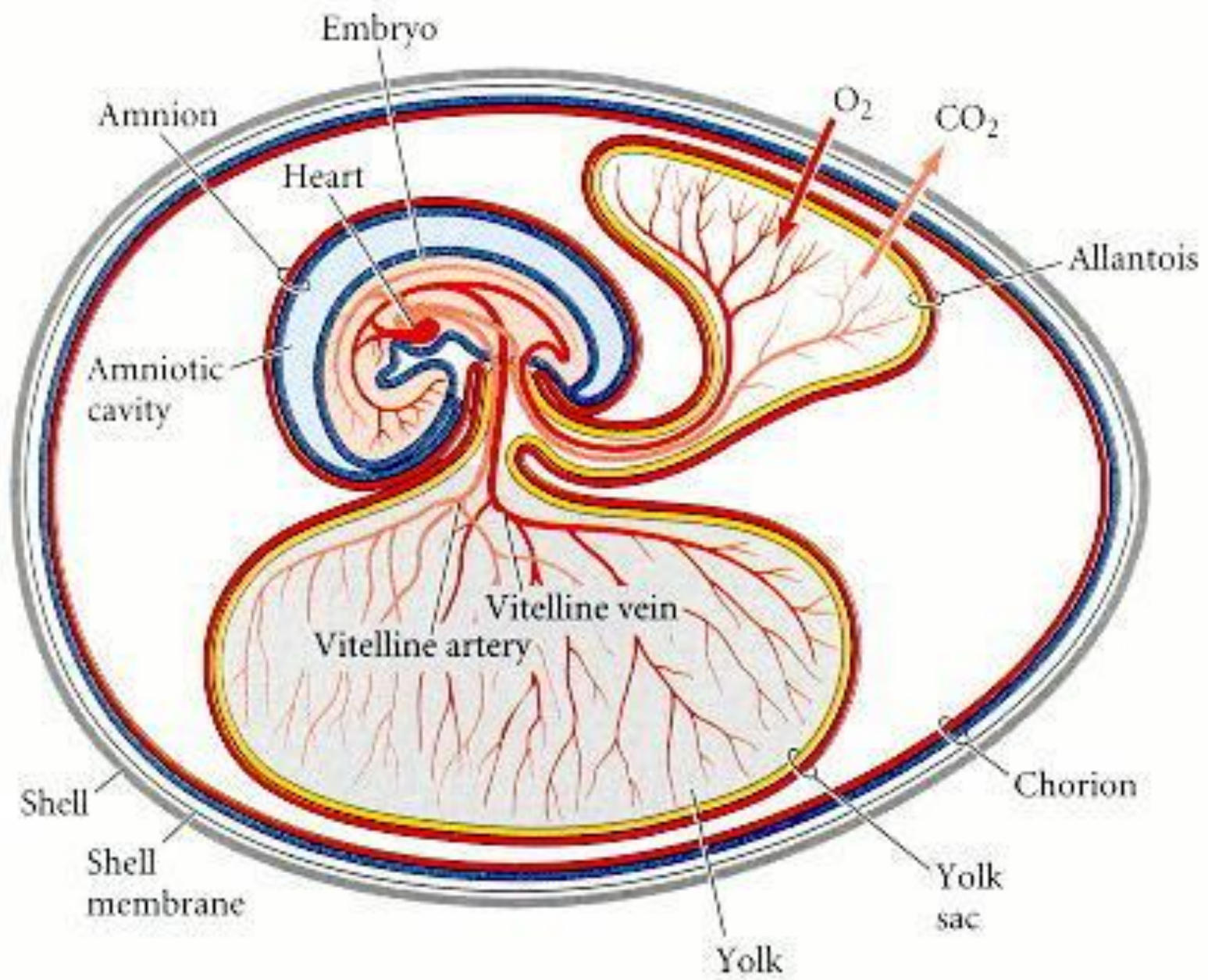
**2.0 mm**



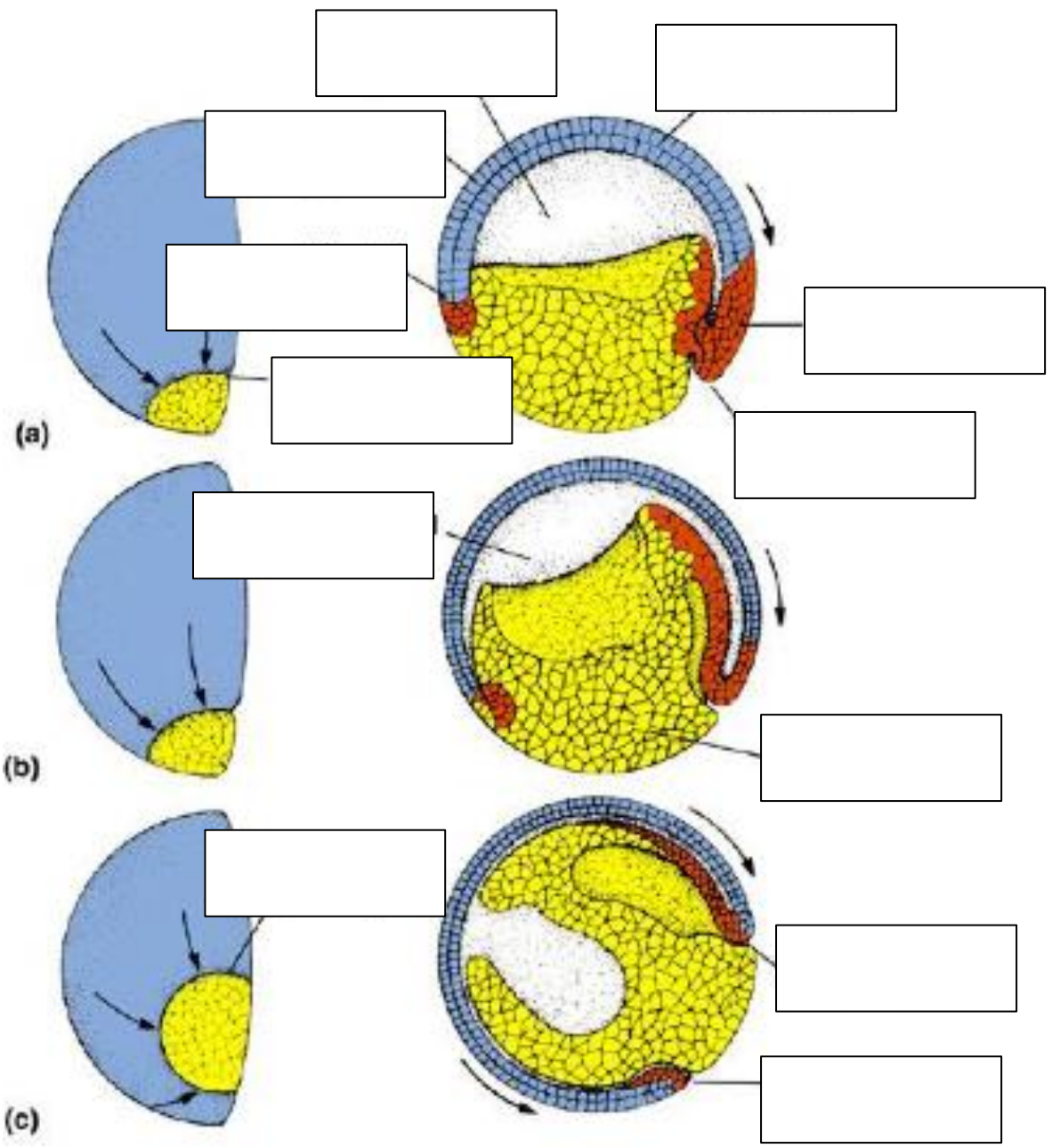


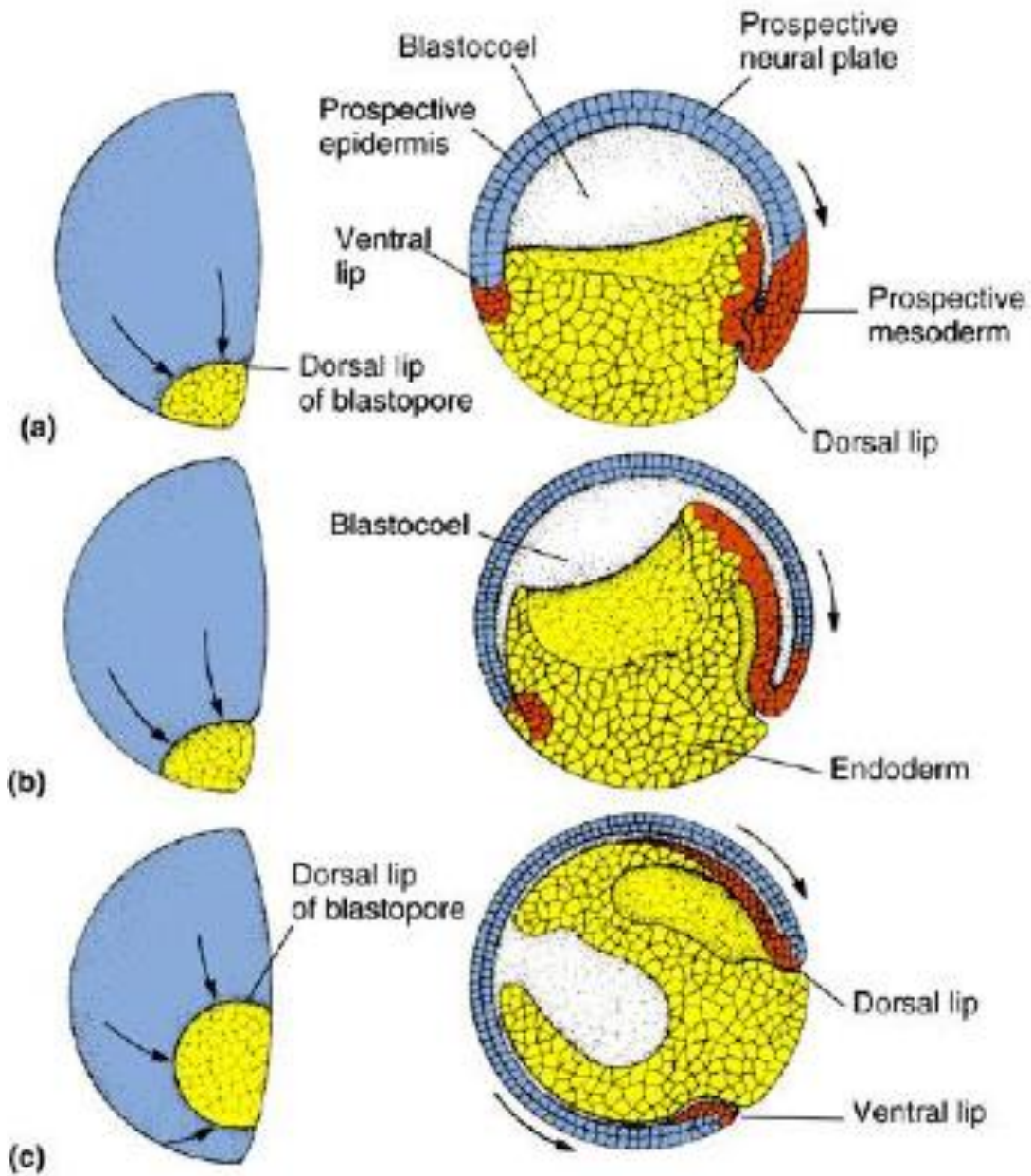


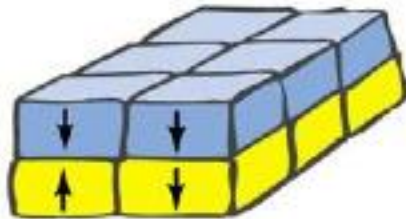
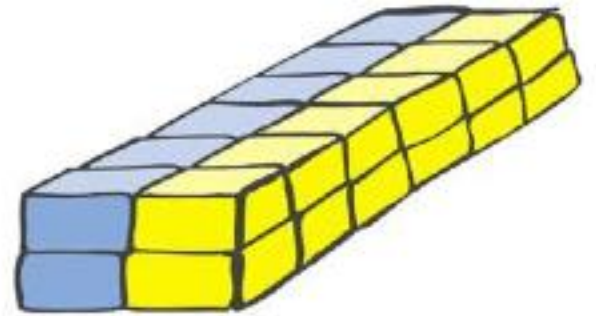
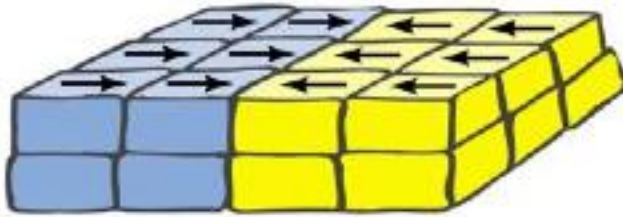




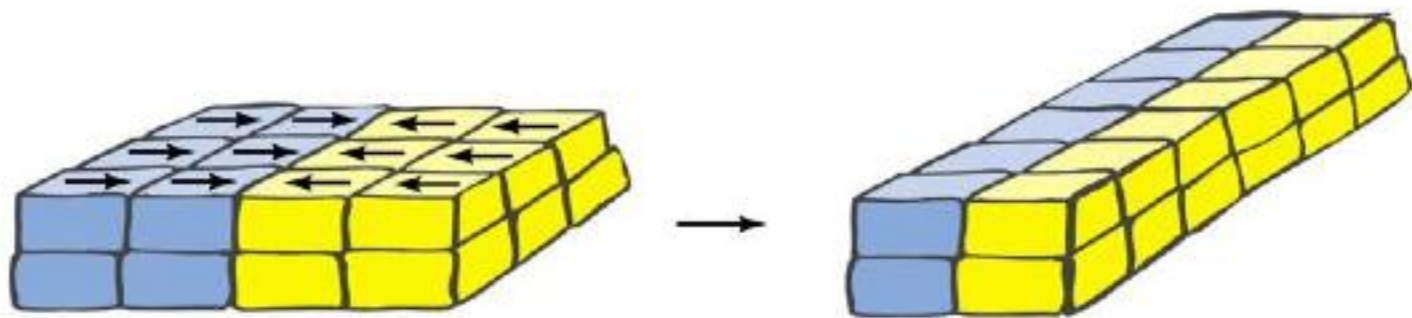




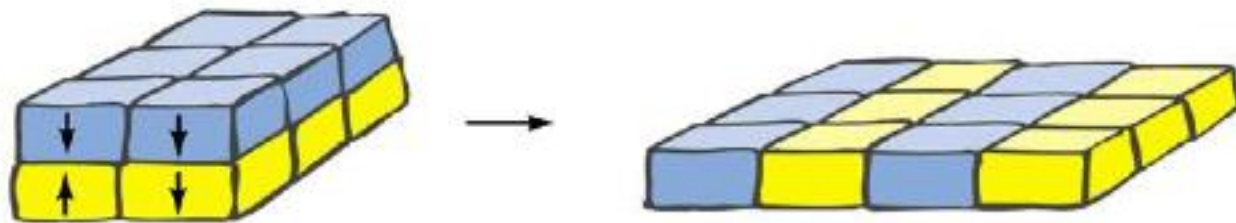




lateral  
intercalation

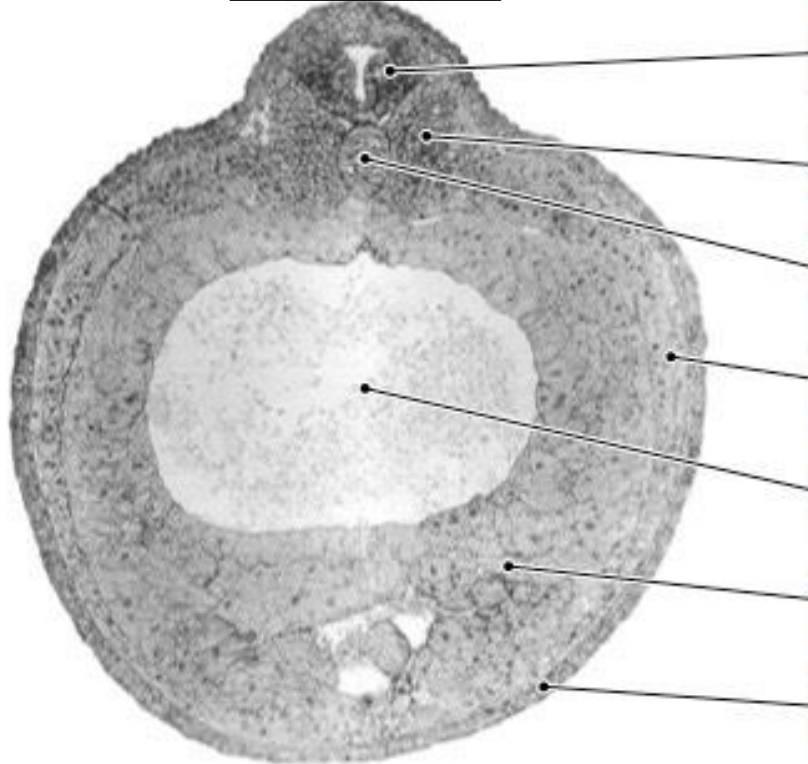


radial  
intercalation



[Empty box for overall title]

[Empty box for left diagram title]



[Empty box for left diagram title]

[Empty box for label 1]

[Empty box for label 2]

[Empty box for label 3]

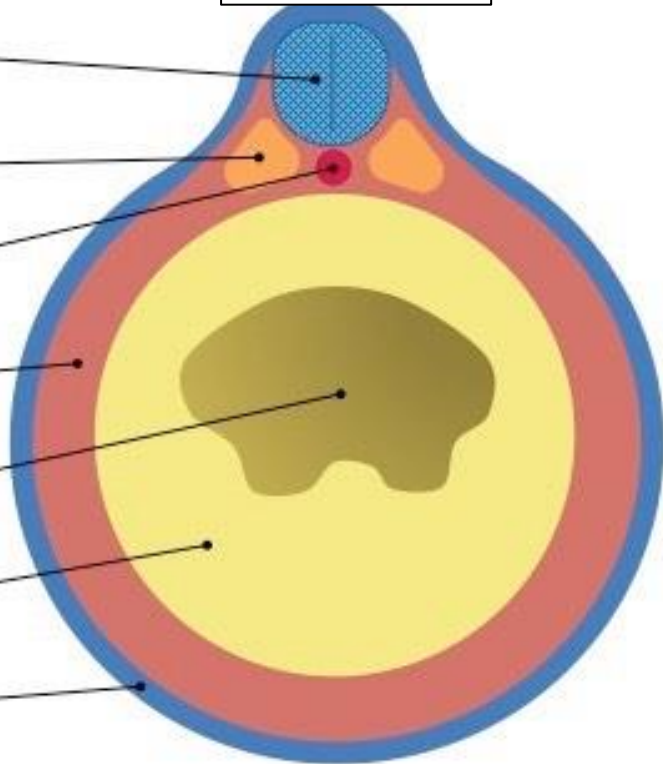
[Empty box for label 4]

[Empty box for label 5]

[Empty box for label 6]

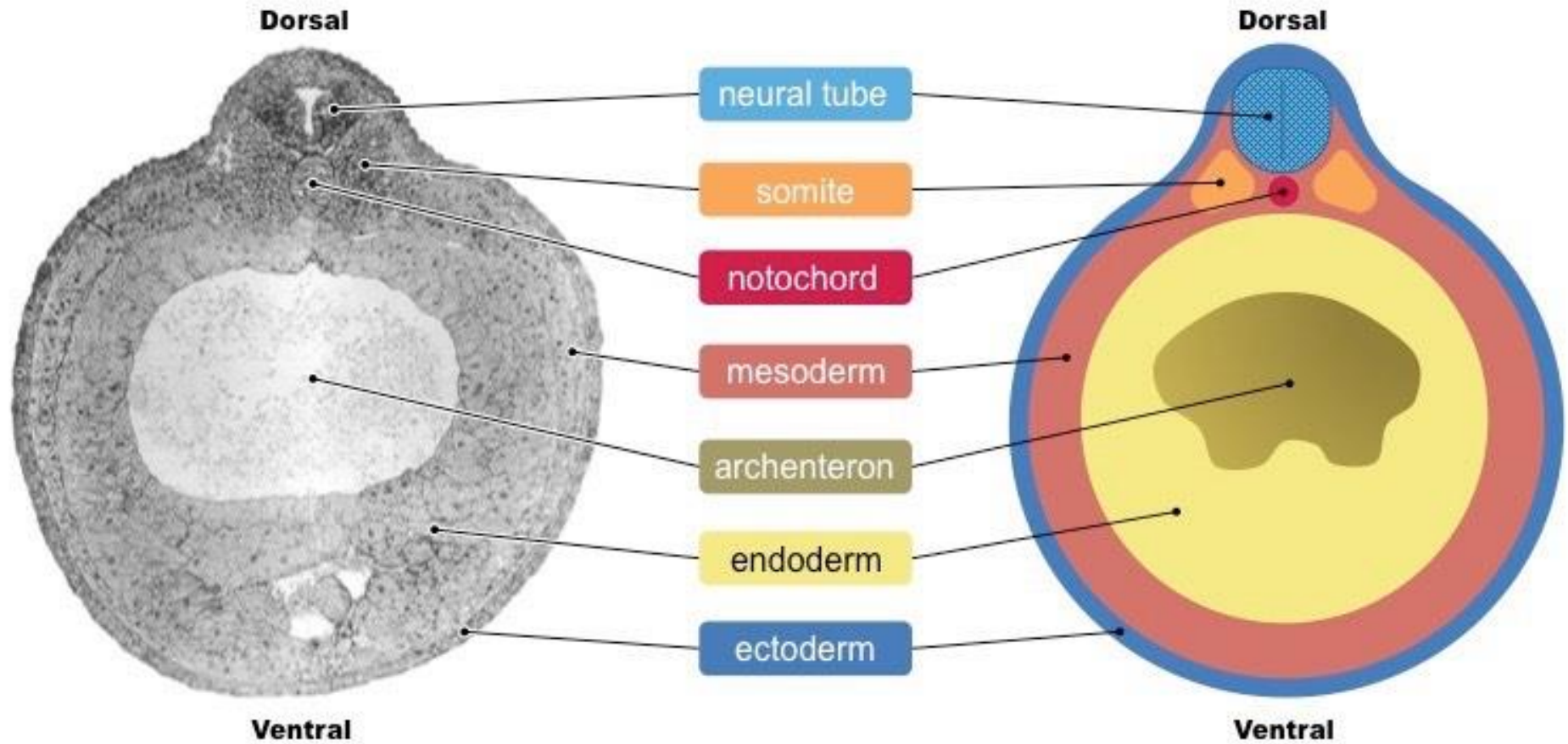
[Empty box for label 7]

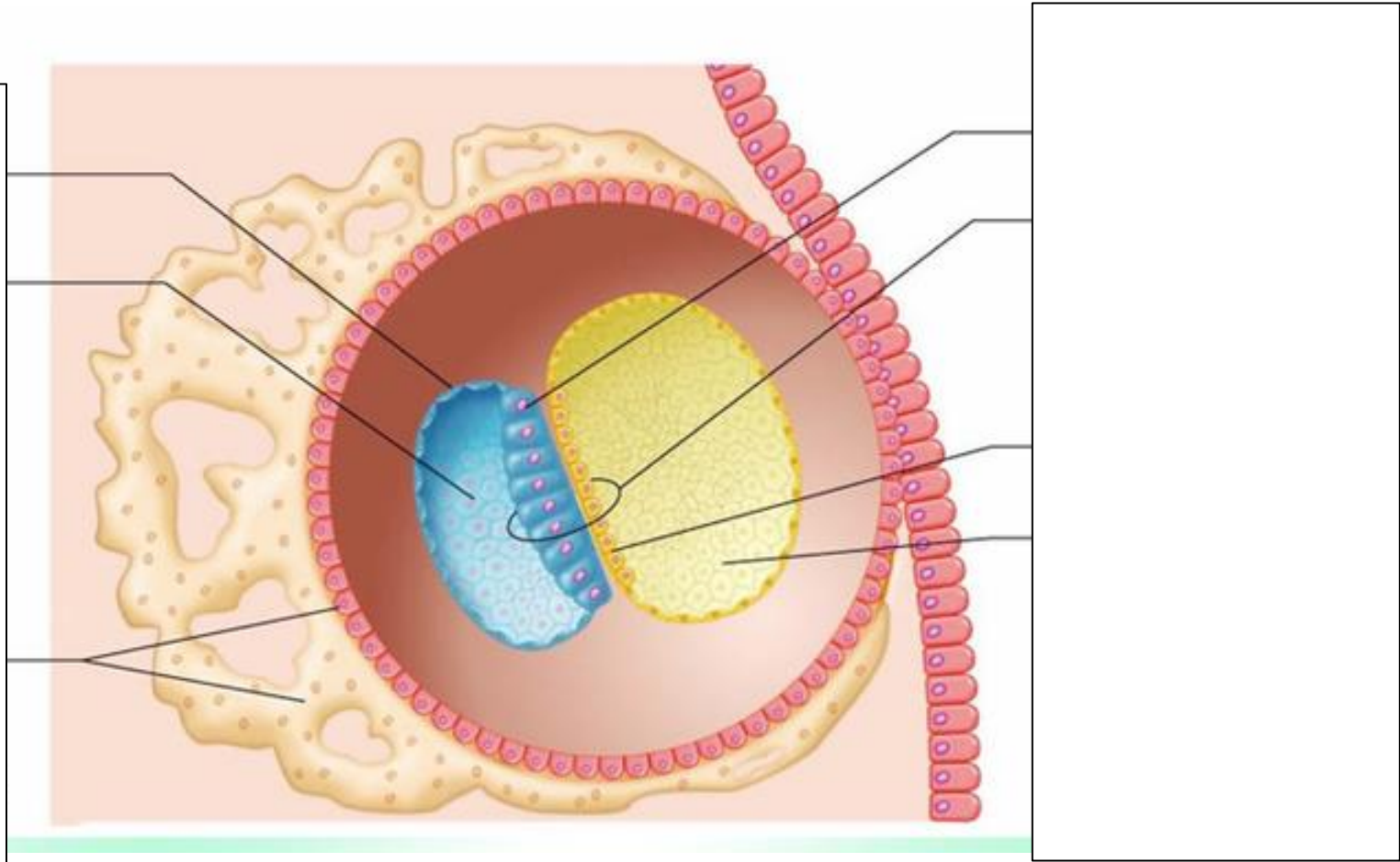
[Empty box for right diagram title]



[Empty box for right diagram title]

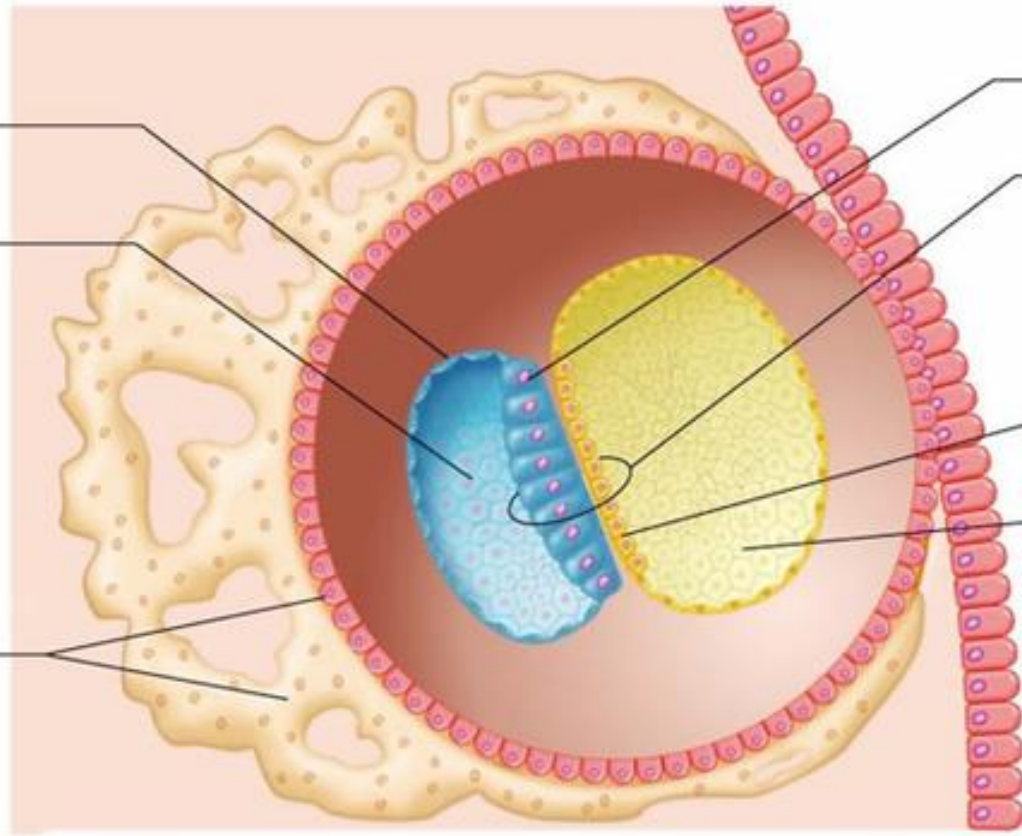
Transverse cross-section of a *Xenopus* embryo (left: micrograph ; right: schematic)





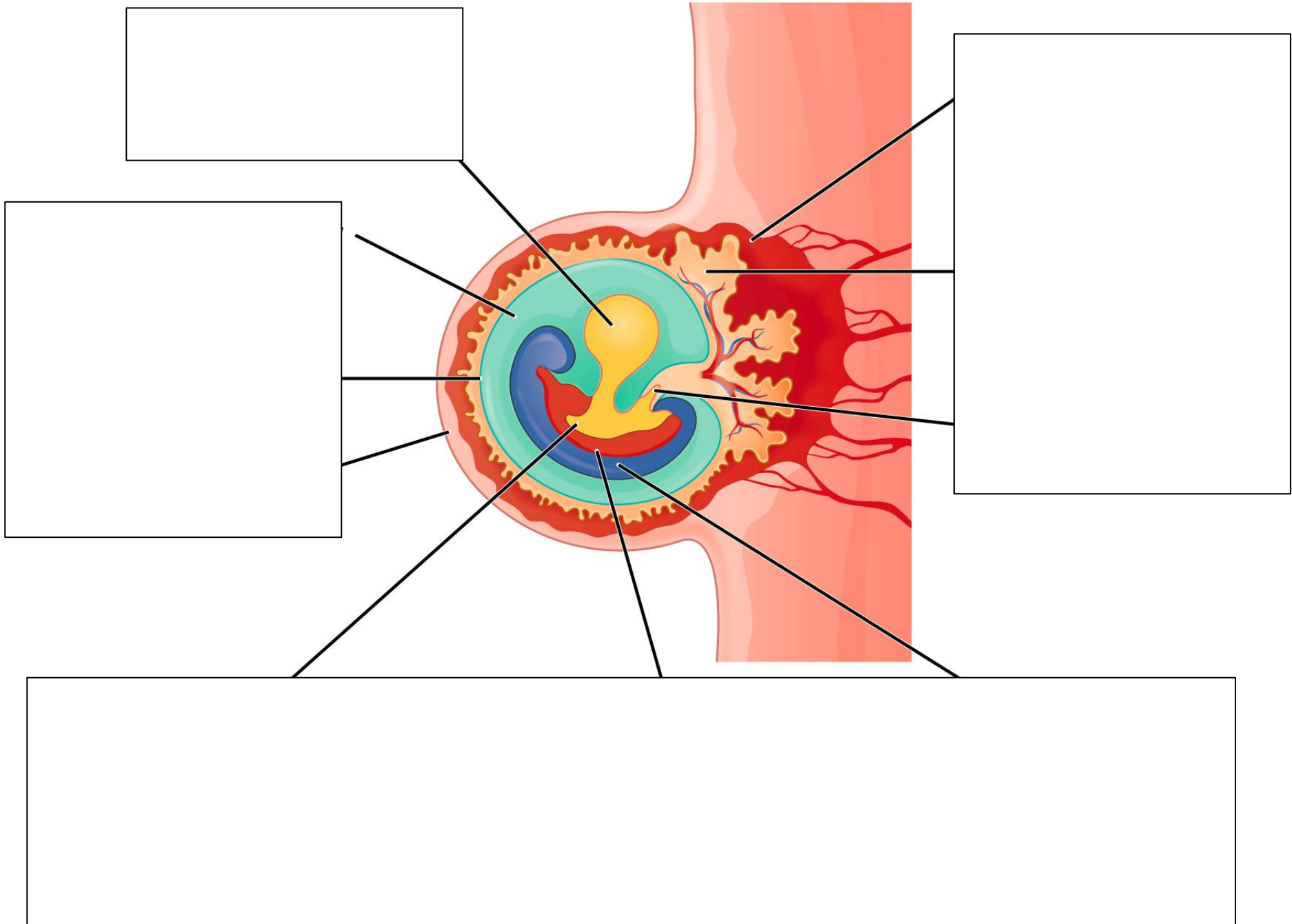
**(e) Day 11**

**Amnion**  
**Amniotic sac cavity**  
**Layers from trophoblast**



**Epiblast**  
**Bilaminar embryonic disc**  
**Hypoblast**  
**Yolk sac cavity**





Yolk sac  
(lined with endoderm)

Amniotic cavity  
containing  
amniotic fluid

Amnion

Endometrium

Maternal  
blood pool

Chorion (derived  
from blastocyst  
cavity membrane)

Allantois

**Endoderm layer  
becomes:**

- 1) Digestive system
- 2) Liver
- 3) Pancreas
- 4) Lungs (inner layers)

**Mesoderm layer  
becomes:**

- 1) Circulatory system
- 2) Lungs (epithelial layers)
- 3) Skeletal system
- 4) Muscular system

**Ectoderm layer  
becomes:**

- 1) Hair
- 2) Nails
- 3) Skin
- 4) Nervous system

