

Schema tettonico del foglio 366 Palombara Sabina

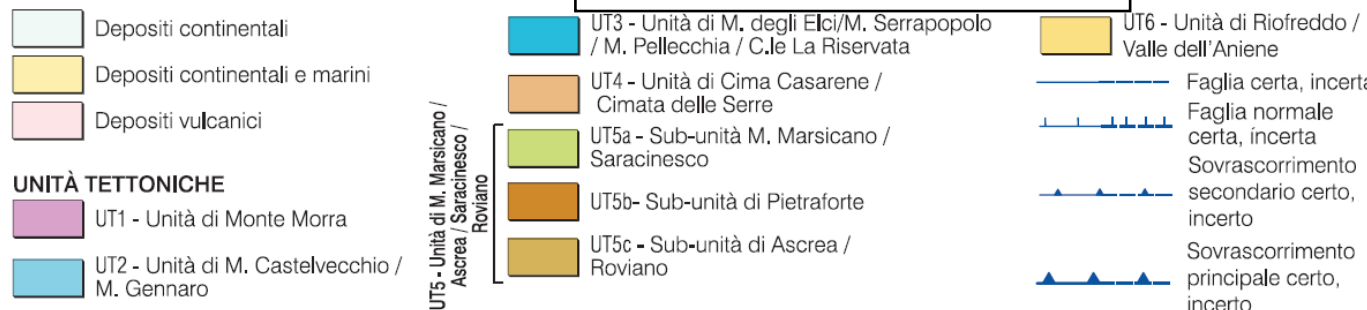
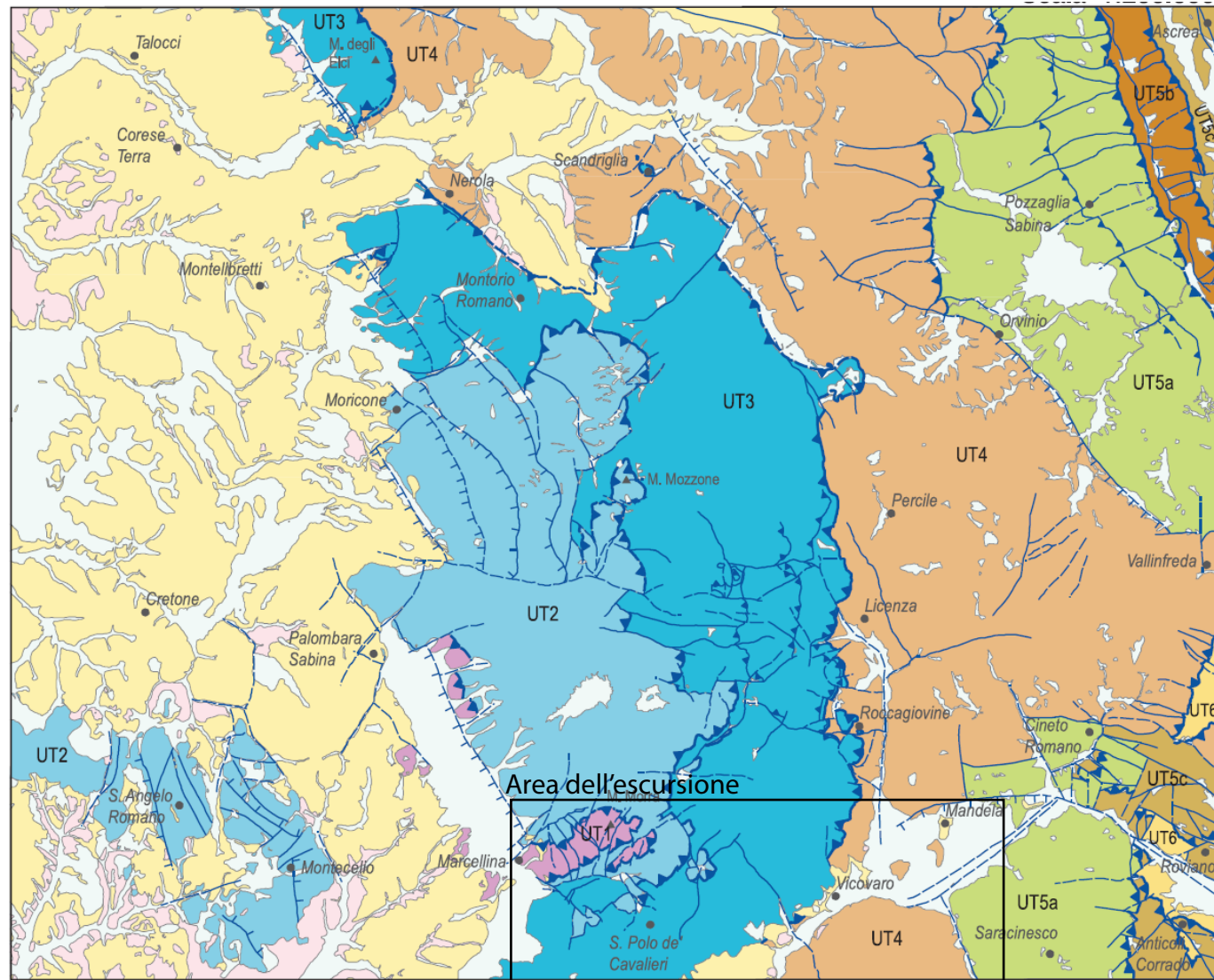
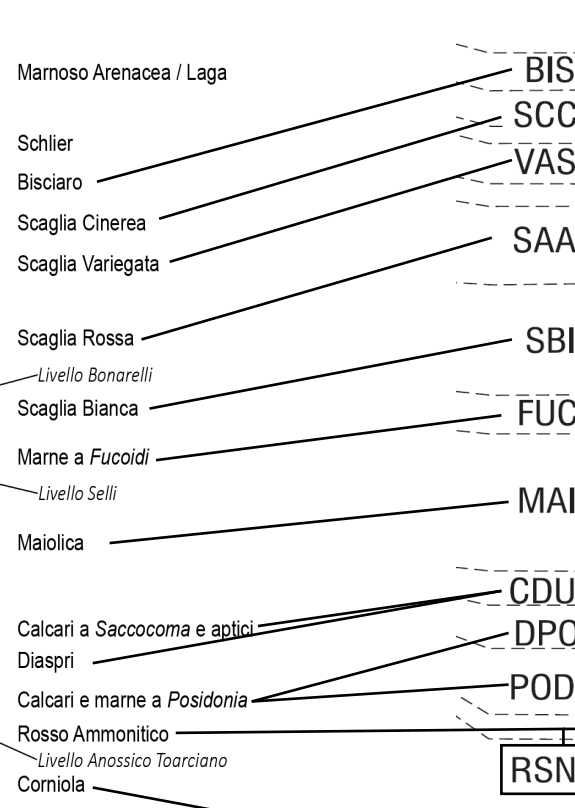
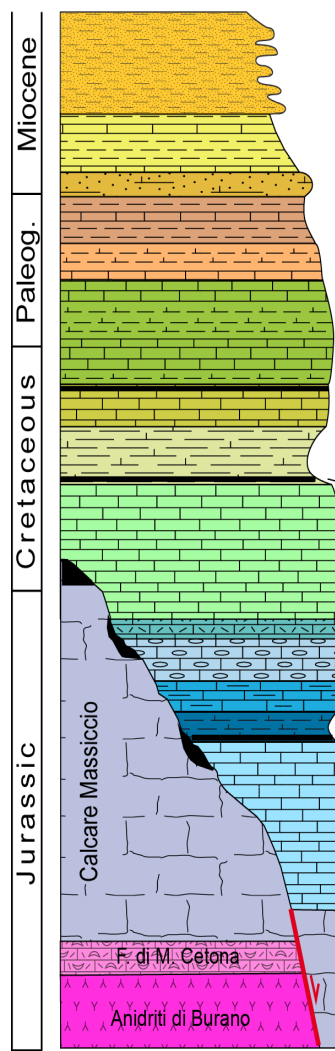


Fig. 9 - Cava abbandonata lungo la S.P. Marcellina - S. Polo de' Cavalieri in loc. le Fornaci (coordinate: N42°01'10.39"-E12°50'00.58") Sovrascorrimento dell'Unità 1 (Dolomia Principale DPR) sull'unità 2 (Calcare Massiccio MAS).

Colonna stratigrafica schematica del Bacino Umbro-Marchigiano-Sabino



Colonna stratigrafica del Foglio 366 Palombara Sabina

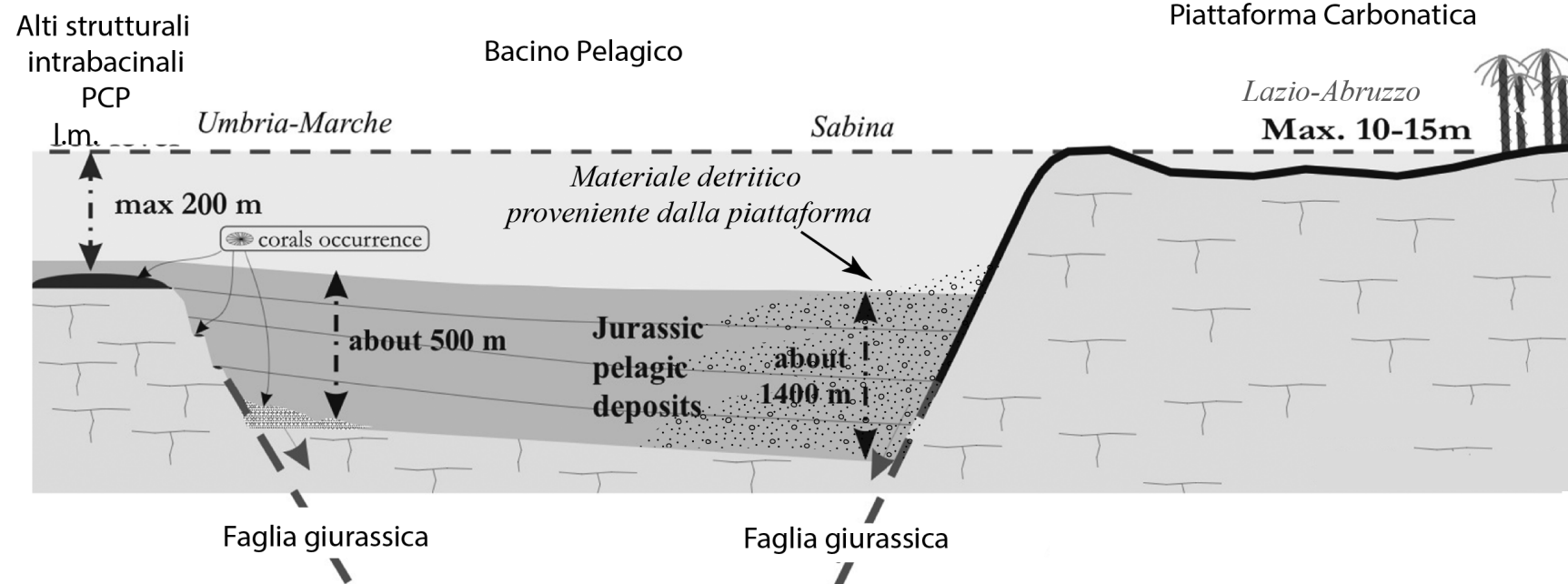
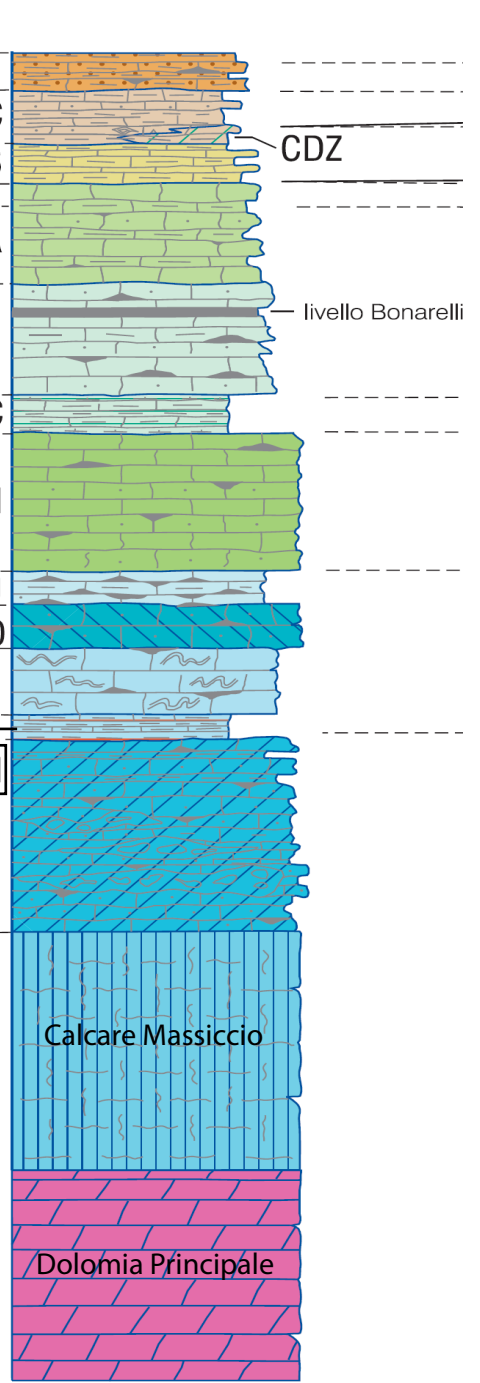


Fig. 9 - Cava abbandonata lungo la S.P. Marcellina - S. Polo de' Cavalieri in loc. le Fornaci (coordinate: N42°01'10.39"-E12°50'00.58") Sovrascorrimento dell'Unità 1 (Dolomia Principale DPR) sull'unità 2 (Calcare Massiccio MAS).