

EASL Clinical Practice Guidelines on nutrition in chronic liver disease[☆]

European Association for the Study of the Liver*

Summary

A frequent complication in liver cirrhosis is malnutrition, which is associated with the progression of liver failure, and with a higher rate of complications including infections, hepatic encephalopathy and ascites. In recent years, the rising prevalence of obesity has led to an increase in the number of cirrhosis cases related to non-alcoholic steatohepatitis. Malnutrition, obesity and sarcopenic obesity may worsen the prognosis of patients with liver cirrhosis and lower their survival. Nutritional monitoring and intervention is therefore crucial in chronic liver disease. These Clinical Practice Guidelines review the present knowledge in the field of nutrition in chronic liver disease and promote further research on this topic. Screening, assessment and principles of nutritional management are examined, with recommendations provided in specific settings such as hepatic encephalopathy, cirrhotic patients with bone disease, patients undergoing liver surgery or transplantation and critically ill cirrhotic patients.

© 2018 European Association for the Study of the Liver. Published by Elsevier B.V. All rights reserved.

Introduction

Malnutrition is frequently a burden in patients with liver cirrhosis, occurring in 20–50% of patients. The progression of malnutrition is associated with that of liver failure. While malnutrition may be less evident in patients with compensated cirrhosis it is easily recognisable in those with decompensated cirrhosis. Malnutrition has been reported in 20% of patients with compensated cirrhosis and in more than 50% of patients with decompensated liver disease.¹ Both adipose tissue and muscle tissue can be depleted; female patients more frequently develop a depletion in fat deposits while males more rapidly lose muscle tissue.^{2,1}

As detailed in these clinical practice guidelines (CPGs), malnutrition and muscle mass loss (sarcopenia), which has often been used as an equivalent of severe malnutrition,³ are associated with a higher rate of complications⁴ such as susceptibility to infections,⁵ hepatic encephalopathy (HE)⁶ and ascites,⁴ as well as being independent predictors of lower survival in cirrhosis^{7,8} and in patients undergoing liver transplantation.⁹ Given

these observations, malnutrition and sarcopenia should be recognised as complications of cirrhosis, which in turn worsen the prognosis of cirrhotic patients.

Whether malnutrition can be reversed in cirrhotic patients is controversial. Although there is general agreement about the need to improve the dietary intake of these patients, by avoiding limitations and restrictions that are not evidence based, amelioration of the nutritional status and muscle mass is not always achievable.^{10–12}

Although the term “malnutrition” refers both to deficiencies and to excesses in nutritional status, in the present CPGs “malnutrition” refers to “undernutrition”. More recently, in addition to undernutrition, overweight or obesity are increasingly observed in cirrhotic patients because of the increasing number of cirrhosis cases related to non-alcoholic steatohepatitis (NASH). Muscle mass depletion may also occur in these patients, but due to the coexistence of obesity, sarcopenia might be overlooked. Obesity and sarcopenic obesity may worsen the prognosis of patients with liver cirrhosis.^{13–15,3}

No previous guidelines released by the European Association for the Study of Liver Disease (EASL) have dealt with nutrition in advanced liver disease and/or have evaluated the relationship between nutritional status and the clinical outcome of patients. Therefore, the EASL Governing Board has asked a panel of experts in the field of nutrition and hepatology to produce the present CPGs.

Methodology

The panel initially established the most relevant questions to answer, considering relevance, urgency and completeness of the topics to be covered. The main questions addressed were: How can nutritional problems be recognised? In which conditions are nutritional assessments recommended? What are the available methods of evaluation? What are the consequences of malnutrition and its correction? Different clinical scenarios have been considered with special attention paid to nutrition in HE and before and after liver transplantation. A section devoted to bone metabolism in chronic liver disease has also been included. Each expert took responsibility and made proposals for statements for a specific section of the guideline.

The literature search was performed in different databases (PubMed, Embase, Google Scholar, Scopus) and a list of pertinent articles was derived from this “first line” search. The initial key words were: “Nutrition” OR “Nutritional status” OR “Malnutrition” OR “Sarcopenia” AND “Liver cirrhosis” OR “Chronic liver Disease”. Further, more specific key words were also utilised: “nutritional assessment”, “nutrition risk”, “hepatic

[☆] **Clinical Practice Guideline Panel:** Chair: Manuela Merli, EASL Governing Board representative: Annalisa Berzigotti, Panel members: Shira Zelber-Sagi, Srinivasan Dasarathy, Sara Montagnese, Laurence Genton, Mathias Plauth, Albert Parés.

* Corresponding author. Address: European Association for the Study of the Liver (EASL), The EASL Building – Home of Hepatology, 7 rue Daubin, CH 1203 Geneva, Switzerland. Tel.: +41 (0) 22 807 03 60; fax: +41 (0) 22 328 07 24. E-mail address: easloffice@easloffice.eu.



ELSEVIER

Clinical Practice Guidelines

encephalopathy”, “osteoporosis”, “liver transplantation” for each specific topic of the guideline. The selection of references was then based on appropriateness of study design, number of patients, and publication in peer-reviewed journals. Original data were prioritised. The resulting literature database was made available to all members of the panel.

All recommendations were discussed and approved by all participants. The Committee met on two occasions during international meetings with experts who were available to participate, two *ad hoc* teleconferences also took place for discussion and voting.

The evidence and recommendations in these guidelines have been graded according to the Grading of Recommendations Assessment, Development and Evaluation (GRADE) system.¹⁶ The classifications and recommendations are therefore based on three categories: the source of evidence in levels I through III; the quality of evidence designated by high (A), moderate (B), or low quality (C); and the strength of recommendations classified as strong (1) or weak (2) (Table 1). All recommendations based on expert opinion because of the lack of available data were graded as III. The recommendations were

peer-reviewed by external expert reviewers and approved by the EASL Governing Board.

These guidelines are directed at consultant hepatologists, specialists in training, and general practitioners and refer specifically to adult patients with cirrhosis. Their purpose is to provide guidance on the best available evidence to deal with nutritional problems in patients with chronic liver disease. A few schemes were produced by the panel and are included in these guidelines to help with the management of nutritional problems in patients with liver cirrhosis.

For clarity, the terms and definitions used in the present CPGs are summarised (Box 1).

Screening and assessment for malnutrition and obesity in liver cirrhosis: Who, when and how

Given the worse prognosis associated with malnutrition, all patients with advanced chronic liver disease, and in particular patients with decompensated cirrhosis are advised to undergo a rapid nutritional screen. Those at risk of malnutrition should complete a more detailed nutritional assessment to confirm

Table 1. Evidence quality according to the GRADE scoring system.

Level of evidence	
I	Randomised, controlled trials
II-1	Controlled trials without randomisation
II-2	Cohort or case-control analytical studies
II-3	Multiple time series, dramatic uncontrolled experiments
III	Opinions of respected authorities, descriptive epidemiology
Quality of evidence	
A	High: Further research is very unlikely to change our confidence in the estimated effect
B	Moderate: Further research is likely to have an important impact on our confidence in the estimated effect and may change the estimate
C	Low: Further research is likely to have an important impact on our confidence in the estimated effect and is likely to change the estimate. Any change of estimate is uncertain
Grade of recommendation	
1	Strong: Factors influencing the strength of recommendation included the quality of evidence, presumed patient-important outcomes, and costs
2	Weak: Variability in preferences and values, or more uncertainty. Recommendation is made with less certainty, higher costs, or resource consumption

Box 1. Terminology and definitions.

Malnutrition	A nutrition-related disorder resulting from lack of intake or uptake of nutrition that leads to altered body composition (decreased fat free mass) and body cell mass, leading to diminished physical and mental function and impaired clinical outcome from disease. In the present CPGs, we have used “malnutrition” as a synonym of “undernutrition”
Undernutrition	Synonym of malnutrition (see above)
Muscle wasting	The active, progressive loss of muscle mass due to an underlying disease, ultimately leading to muscle atrophy. Most inflammatory diseases, malnutrition and increased catabolism induce muscle wasting
Sarcopenia	A generalised reduction in muscle mass and function due to aging (primary sarcopenia), acute or chronic illness (secondary sarcopenia), including chronic liver disease
Frailty	Loss of functional, cognitive, and physiologic reserve leading to a vulnerable state. Frailty may be considered a form of nutrition-related disorder
Immunonutrition	Use of specific nutrients in an attempt to modulate the immune system (not necessarily in the presence of malnutrition) and function to improve health state. Examples include enteral nutritional formulas enriched with ω -3 fatty acids, arginine, glutamine and nucleotides
Deconditioning	Deterioration of muscle functional capacity related to immobility and chronic debilitating disease

the presence and severity of malnutrition,^{17–19} in order to actively manage this complication.

Nutrition screening tools

Two simple criteria stratify patients at high risk of malnutrition: being underweight, defined as a body mass index (BMI) (kg/body weight [BW]/[height in meters]²) < 18.5 kg/m²,²⁰ in which the vast majority of cirrhotic patients have sarcopenia, and having advanced decompensated cirrhosis (Child-Pugh C patients).^{17,21}

There are several possible scoring tools to classify patients who are at risk of malnutrition. Most have not been validated in cirrhotic patients, and are prone to bias in cases of fluid retention, which should be accounted for. There are two liver disease-specific tools, however, both need further validation. The Royal Free Hospital-nutritional prioritizing tool (RFH-NPT) score was reported to correlate with clinical deterioration, severity of disease (Child-Pugh score, model for end-stage liver disease [MELD] score), and clinical complications such as ascites, hepatorenal syndrome, and episodes of HE.²² Furthermore, improvement in RFH-NPT score was associated with improved survival.²² This scheme takes less than 3 mins to be completed and can be used by non-specialist staff. The liver disease undernutrition screening tool is based on six patient-directed questions regarding: nutrient intake, weight loss, subcutaneous fat loss, muscle mass loss, fluid accumulation and decline in functional status. However, it relies almost completely on the patient's subjective judgment and has low negative predictive value.²³ If the initial screening using these tools is negative, it is recommended that the evaluation be repeated over time.

Detailed nutritional assessment

It is advisable that patients who are at risk of malnutrition during screening undergo a detailed nutritional assessment for the diagnosis of malnutrition, preferably by a registered dietitian or nutrition expert. In patients with cirrhosis whose screening results indicate a high risk of malnutrition, it is suggested that each component be assessed and documented every 1–6 months in the outpatient setting and for inpatients, at admission and periodically throughout the hospital stay.¹⁷

The components of a detailed nutritional assessment include evaluation of: muscle mass, global assessment tools and a detailed dietary intake assessment, as described below.

Sarcopenia: How to assess

Sarcopenia is a major component of malnutrition. Direct quantification of skeletal muscle mass requires cross-sectional imaging.²⁴ Computed tomographic (CT) image analysis at the L3 vertebra is almost universally recognised as a specific method to quantify muscle loss. Psoas muscle and possibly para spinal and abdominal wall muscles are considered core skeletal muscles that are relatively independent of activity and water retention, but are consistently altered by the metabolic and molecular perturbations of cirrhosis. Any of the several possible image analysis software packages can be used to analyse the total cross-sectional area (cm²) of abdominal skeletal muscles at L3. This area is then normalised to height to calculate the skeletal muscle index (cm²/m²). Even though magnetic resonance imaging has also been suggested, data in patients with liver cirrhosis are scarce and normal values are still required.

The routine use of CT imaging for nutritional assessment, especially for repeated assessments, is obviously limited in clinical practice, due to cost and exposure to radiation. However,

since CT scanning is frequently available in cirrhotic patients (second line imaging for screening hepatocellular carcinoma, evaluation for liver transplant, evaluation of vascular shunts or portal thrombosis), it can be utilised at least once for assessment of sarcopenia.

All measures require normal values that are based on age, gender and ethnicity. In addition, there are gender differences in the interpretation of muscle mass and function, indicating lower predictive validity in women.^{21,25} Normal CT measures and cut-off values to define sarcopenia were initially derived from an oncologic population.²⁶ Cut-off values derived from cirrhotic patients on the liver transplant list and based on clinical outcomes have only recently been suggested (50 cm²/m² for men and 39 cm²/m² for women),²⁷ and still need to be further validated. The predictive role of CT-assessed skeletal muscle mass in liver transplant candidates was demonstrated in a meta-analysis, showing an independent association between low muscle mass and post-transplantation mortality (pooled hazard ratios of sarcopenia 1.84, 95% CI 1.11–3.05), independent of the MELD score.²⁸

Body mass assessment can also be performed by simple bedside anthropometric methods²⁹ including mid-arm muscle circumference (MAMC, defined as mid-arm circumference minus [triceps skinfold (TSF) × 0.314]),³⁰ mid-arm muscular area [MAMA = (MAMC)²/4 × 0.314] and TSF, which are simple to perform, rapid, low cost, and not affected by the presence of fluid retention. Both MAMC and TSF have a demonstrated prognostic value for mortality among cirrhotic patients, with MAMC having a higher prognostic power than TSF.³¹ If performed by trained personnel, these measurements have good intra and inter-observer agreement (intra-class correlation of 0.8 and 0.9 for TSF and MAMC, respectively).³² Compared to the diagnosis of sarcopenia by cross-sectional imaging (by CT or magnetic resonance), the predictive value of MAMC was shown to be good, with an area under the receiver operating characteristic curve (AUROC) of 0.75 for men and 0.84 for women.³⁰ In a small sample study, a significant but moderate correlation was observed between CT measurement and MAMC in cirrhotic men ($r = 0.48$, $p < 0.001$), but not in women.³¹ In addition, low MAMC was found to be an independent predictor of mortality after liver transplant,³³ and in a large sample of the general population, but only among men.³⁴

Whole body dual-energy X-ray absorptiometry (DEXA) allows measurement of bone mineral density, fat mass and fat-free mass. However, fat-free mass is not only skeletal muscle mass. Radiation exposure, cost and logistics are additional limitations, while water retention may limit the validity of the formula applied to assess body composition. The ability to quantify limb muscle mass, which could be more reliable and has corresponding cut-offs in the healthy population, is an advantage and may overcome the confounding effect of overhydration.

Tetrapolar bioelectrical impedance analysis (BIA) uses the two-compartment model, and segmental BIA measurements allow limb non-fat mass quantification. Low cost, portable equipment and ease of use are advantages of BIA. However, the validity of these methods also depends on stable hydration status, which may be altered in patients with cirrhosis.³⁵

Skeletal muscle contractile function is not a direct measure of muscle mass but has been used as a measure of sarcopenia. Handgrip strength is a simple, inexpensive, and effective method to detect malnutrition in cirrhotic patients; predicting incidence of major complications and mortality.^{36–38}

Clinical Practice Guidelines

Measures of frailty, defined as patient's vulnerability to stress, decreased physiologic reserve and functional status deficits^{39,40} can also be used in the assessment of cirrhotic patients. There are several measures of frailty that are used in geriatrics and were also demonstrated to have predictive value in cirrhotic patients. The Fried frailty phenotype is characterised by five domains: unintentional weight loss, self-reported exhaustion, weakness (grip strength), slow walking speed, and low physical activity.³⁹ An increase in the Fried frailty score was demonstrated to be associated with increased risk of liver transplant waitlist mortality, even when adjusting for MELD.⁴⁰ The short physical performance battery (SPPB) consists of timed repeated chair stands, balance testing, and a timed 13-ft walk and takes 2–3 mins to complete. Although the SPPB does not correlate with CT-based muscle mass in men or women,³⁸ it predicts liver transplant waitlist mortality.^{38,40} At present, there are no standardised or universally accepted criteria to diagnose frailty in cirrhosis.

Global assessment tools in cirrhosis

The technique of subjective global assessment (SGA) uses data collected during clinical evaluation to determine nutritional status without recourse to objective measurements.³² Overall, SGA has fair to good inter-observer reproducibility⁴¹ and is associated with various clinical and prognostic variables of liver transplantation.⁴² However, agreement of SGA with other methods of assessment of nutritional status (total lymphocyte count, MAMC, MAMA, TSF, subscapular skinfold thickness, BMI and handgrip measurement) is low ($K < 0.26$).⁴³ Furthermore, SGA underestimates the prevalence of muscle loss in liver disease patients, compared with other objective measures.^{36,44–47}

The Royal Free Hospital-global assessment (RFH-GA),³² for determining nutritional status in patients with cirrhosis is reproducible, correlates with other measures of body composition and predicts survival and post-transplant complications.^{32,48,49} Patients are stratified into one of three categories based on their dry weight-based BMI and their MAMC: adequately nourished, moderately malnourished (or suspected to be), or severely malnourished. The limitations of this tool include the time required, and the need for trained personnel for consistent results.

Reported dietary intake

Dietary interviews provide practical information for nutritional interventions by identifying what and how much the patient is willing and capable of eating and determining specific nutrient deficiencies that need to be corrected. A detailed assessment of dietary intake is suggested to include: food, fluids, supplements, number of meals and their timing throughout the day (e.g. interval between meals, breakfast and late-night meals as recommended), as well as calories and quality and quantity of protein intake. It should also include barriers to eating: nausea, vomiting, aversion to certain foods, taste, low-sodium diet, early satiety, gastrointestinal pain and diarrhoea or constipation. The symptoms section of the abridged scored patient-generated subjective global assessment (abPG-SGA) can be used to construct the questions.⁵⁰

Evaluation of dietary intake is time consuming, requires skilled personnel and relies on patient recall and cooperation. The best method that relies the least on patient recall is a three-day food diary. However, it requires patients to cooperate and follow detailed instructions, which may make it difficult to

implement in those with advanced disease. Therefore, repeated 24 h dietary recalls are also optional.⁵¹ The 24 h recall technique requires short-term recall, is less burdensome, less likely to alter eating behaviour than food diary, and can be used across diverse populations because it does not require a high level of literacy.⁵²

At a minimum, patients should be asked if their relative food intake has changed and, if so, by how much (by half *etc.*) and over what period of time (for example, as indicated in the SGA – nutritional assessment tool).⁵³

Obesity in cirrhosis: Assessment and interpretation

With the increasing prevalence of obesity and NASH-related cirrhosis, attention needs to be paid to obesity in patients with cirrhosis. Obesity does not rule out malnutrition. The combination of loss of skeletal muscle and gain of adipose tissue is termed sarcopenic obesity and is observed in a significant number of patients with cirrhosis.^{14,54,55} Moreover, post-transplant obesity and metabolic syndrome are common and weight gain after transplantation is considered to be primarily due to an increase in the adipose tissue, with concomitant loss in skeletal muscle.^{55,56} Therefore, malnutrition needs to be estimated routinely and treated in the obese cirrhotic patient. In clinical practice, BMI is adequate to recognise obesity (defined as BMI equal or greater than 30 kg/m²) in cirrhotic patients, in the absence of fluid retention. In the case of fluid retention, BW needs to be corrected by evaluating the patient's dry weight, commonly estimated by post-paracentesis BW or weight recorded before fluid retention if available, or by subtracting a percentage of weight based upon the severity of ascites (mild 5%; moderate 10%; severe 15%), with an additional 5% subtracted if bilateral pedal oedema is present, as performed in several studies.^{21,30} This is still not validated but excellent inter-observer agreement has been demonstrated. The dry-weight BMI is then calculated by dividing the patient's estimated dry weight (kg) by the square of the patient's height (m).

The proposed process for nutritional screening and assessment in patients with chronic liver disease is summarised (Fig. 1).

Recommendations

- Perform a rapid nutritional screen in all patients with cirrhosis and complete a detailed assessment in those at risk of malnutrition, to confirm the presence and severity of malnutrition. (**Grade II-2, B1**)
- Assume risk for malnutrition to be high if BMI <18.5 kg/m² or Child-Pugh C. Utilise nutritional screening tools to assess the risk of malnutrition in all other instances. (**Grade II-2, B1**)
- In the diagnosis of obesity (BMI >30 kg/m²) always consider the confounding effect of fluid retention and estimate dry BW, even though the accuracy is low. (**Grade II-2, B2**)
- Include an assessment of sarcopenia within the nutritional assessment. (**Grade II-2, B1**)
- Whenever a CT scan has been performed, assess muscle mass on images by this method. Anthropometry, DEXA or BIA are possible alternatives, which also allow for serial measurements. (**Grade II-2, B1**)

- Assess muscle function, in the clinical setting, with the most appropriate tool, such as handgrip strength and/or the short physical performance battery. (**Grade II-2, B1**)
- Assess dietary intake by trained personnel (ideally a dietician with knowledge of managing patients with liver disease) working as part of a team with the hepatologist. Assessment should include: quality and quantity of food and supplements, fluids, sodium in diet, number and timing of meals during the day and barriers to eating. (**Grade II-2, B1**)

Nutritional management principles in patients with liver cirrhosis

Since malnutrition and sarcopenia are independent predictors of adverse clinical outcomes including survival^{57-59,17,60} any nutritional approach in cirrhotic patients needs to be guided by some general principles of nutritional management.

Energy and protein requirements in cirrhosis

Cirrhosis is a state of accelerated starvation demonstrated by a rapid post absorptive physiology which is characterised by a reduction in the respiratory quotient.^{61,62} The reduction in the respiratory quotient is the manifestation of a metabolic switch in the primary fuel from glucose to fatty acids. During this state of accelerated starvation, protein synthesis is decreased and gluconeogenesis from amino acids is increased, necessitating proteolysis, which contributes to sarcopenia. Gluconeogenesis is an energy-expensive procedure which may further increase resting energy expenditure (REE) in these patients. Accelerated starvation is aggravated by reduced dietary intake due to a variety of factors including dysgeusia, anorexia of chronic disease, salt restricted food that is not tasty, portal hypertension that contributes to impaired gut motility, decreased nutrient absorption and protein losing enteropathy.⁶³⁻⁶⁶ Additional factors that result in decreased dietary intake include inappropriate dietary protein restriction, hospitalisation with periods of fasting for diagnostic and therapeutic procedures, encephalopathy and gastrointestinal bleeding.

Energy supply needs to balance total energy expenditure (TEE), which includes REE, food-related thermogenesis and energy expenditure related to physical activity. TEE is measured

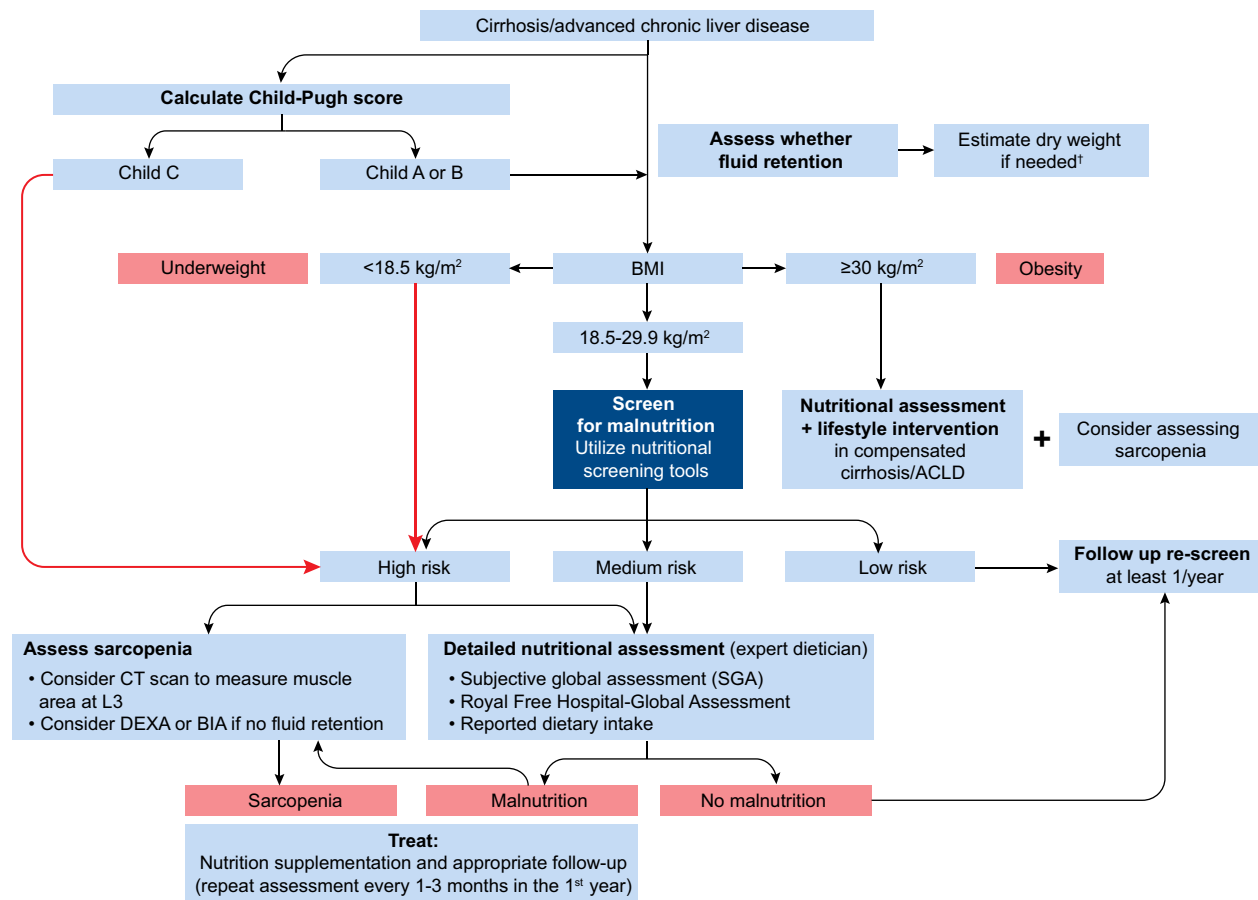


Fig. 1. Nutritional screening and assessment in patients with cirrhosis. All patients should undergo a rapid screening of malnutrition using validated, accepted tools. A liver specific screening tool which takes into consideration fluid retention may be advisable (Royal Free Hospital Nutritional Prioritizing Tool (RFH-NPT)). Patients found to be at high risk of malnutrition should undergo a detailed nutritional assessment, and based on the findings they should receive either supplementation or regular follow-up. †In a case of fluid retention, body weight should be corrected by evaluating the patient's dry weight by post-paracentesis body weight or weight recorded before fluid retention if available, or by subtracting a percentage of weight based upon severity of ascites (mild, 5%; moderate, 10%; severe, 15%), with an additional 5% subtracted if bilateral pedal oedema is present. BIA, bioelectrical impedance analysis; BMI, body mass index; CT, computed tomography; DEXA, dual-energy X-ray absorptiometry.

Clinical Practice Guidelines

ideally with doubly labelled water or in a respiratory chamber, but these methods are not feasible in the clinical setting. Physical activity is reduced in patients with decompensated cirrhosis and negligible when patients are hospitalised. In cirrhotic patients, TEE varies between 28 to 37.5 kcal/kg.BW/d.^{63,67–70} Some studies evaluated whether decompensated liver cirrhosis affected REE. One small longitudinal study suggested that ascites increases REE.⁷¹ However, a cross-sectional study found no difference in REE between patients with varying levels of liver disease severity and fluid retention.^{72–74} Measured REE may be higher than predicted, a situation termed hypermetabolism. However, hypermetabolism cannot be identified by clinical or laboratory parameters,⁷⁵ the severity and the aetiology of liver cirrhosis and the presence of ascites.²⁵ REE may be estimated by predictive formulae but these are inaccurate in advanced cirrhotic patients, and thus measurement by indirect calorimetry is advisable whenever possible.^{61,62} The availability of the hand held calorimeter at the bedside is a possible alternative to determine a patient's daily caloric needs.⁷⁶

The approach of most nutritional intervention studies in liver cirrhosis is to supply at least 35 kcal/kg.BW/d. The use of actual BW, corrected for ascites (see previous section), is considered safe. This can be achieved primarily by tailoring the oral dietary intake, even though this goal is frequently difficult to accomplish. The role of a nutrition support team has recently been underlined by a retrospective study showing that nutritional intervention, led by a multidisciplinary team, and in which cirrhotic patients participated in teaching sessions about the relevance of appropriate nutrition in chronic liver disease, was able to improve survival rates and quality of life.⁷⁷

Whether frequent feeding can help prevent accelerated starvation and the related proteolysis has also been extensively evaluated. Since the longest inter-meal duration is at night, strategies to shorten nocturnal fasting with a late evening snack have been explored, achieving an improvement in metabolic profile and quality of life, although muscle mass did not show consistent improvement.⁷⁸ The adoption of a breakfast containing some proteins⁷⁹ and a late evening snack⁸⁰ to shorten the

period of fasting are therefore recommended in cirrhotic patients.

Protein needs are based on the minimum protein intake required to maintain nitrogen balance. In alcoholic cirrhosis, nitrogen balance was achieved with intakes of 0.8 g/kg.BW/d.⁸¹ This cut-off was confirmed in studies wherein cirrhotic patients received diets with increasing protein content.^{70,82} These studies also showed that cirrhotic patients are able to utilise up to 1.8 g/kg.BW/d of protein.⁷⁰ In the past, there has been controversy about whether patients suffering from HE should undergo a transient restriction in protein intake, in order to limit the synthesis of ammonium and the deamination of protein to aromatic amino acids. However, normal to high protein intake does not precipitate HE^{83,84} and may even improve mental status^{85,86} (see paragraph on hepatic encephalopathy).

The recommended protein intake in patients with a diagnosis of liver cirrhosis is 1.2–1.5 g/kg.BW/d to prevent loss of muscle mass and reverse muscle loss in those who are sarcopenic. Indeed, sarcopenia, as previously stated, contributes to worse clinical outcomes, independent of the severity of liver disease.^{27,63} Options for the treatment of sarcopenia will be discussed in the next section.

Short dietary advice for use when treating a cirrhotic patient at bedside or during an outpatient visit is provided (Box 2).

Approach to sarcopenia in patients with liver cirrhosis Factors related with sarcopenia in patients with cirrhosis

Skeletal muscle mass is the largest protein store in the body. A balance between skeletal muscle protein synthesis and breakdown is responsible for protein homeostasis (or proteostasis) that maintains skeletal muscle mass.^{66,87,88} In the past, whole body protein turnover studies have yielded conflicting results with unaltered, increased or decreased protein synthesis and breakdown in cirrhosis.^{3,89} Skeletal muscle mass depends on a number of physiological factors including age, gender and ethnicity. The severity and aetiology of liver disease also affects muscle mass, with cholestatic and alcoholic liver disease leading to the most severe muscle loss independently of the severity

Box 2. Short, practical dietary advice for bedside or outpatient clinic use.

- Most of what you have heard/read on the relationship between food and the liver has limited scientific evidence to support it. Generally, healthy eating of a variety of foods is advisable for all patients.
- Virtually no food other than alcohol actually damages the liver and/or is genuinely contraindicated in patients with chronic liver disease.
- In most patients with chronic liver disease, eating an adequate number of calories and protein is much more important than avoiding specific types of food, so it is important that you have a good, varied diet that you enjoy.
- You should try to split your food intake into 3 main meals (breakfast, lunch and dinner) and 3 snacks (mid-morning, mid-afternoon, late evening). The late-evening snack is the most important, as it covers the long interval between dinner and breakfast.
- You should try to eat as many fruit and vegetables as you can. If you feel that this makes you feel bloated, and that it makes you eat less, please report to your doctor or dietician.
- You should try not to add too much salt to your food. It may take some time to adjust, but it usually gets easier with time. However, if you keep feeling that this makes your food unpleasant to eat, and that it makes you eat less, please report to your doctor or dietician.
- A limited proportion of patients with liver disease have a complication called hepatic encephalopathy, which may make them tolerate animal protein (meat) less well than vegetable protein (beans, peas etc.) and dairy proteins. Before you make any changes to your protein intake, you should always ask your doctor or dietician. Please do not reduce your total protein intake as it is not advisable in cirrhosis.
- Some patients with liver disease have other diseases, for example diabetes or overweight/obesity, which require dietary adjustments. Please remember to tell your doctor about all your illnesses and about any dietary advice you have already received from other doctors, nurses or dieticians.

of the underlying liver disease, although data on alcoholic liver disease are not consistent.^{66,90} Hepatocellular dysfunction and portosystemic shunting also result in biochemical and hormonal perturbations in cirrhosis that contribute to sarcopenia.

Increased skeletal muscle ammonia, reduction in testosterone and growth hormone, endotoxemia, as well as decreased dietary nutrient intake contribute to sarcopenia.^{89,91–93} In addition, amino acid perturbations, specifically reduction in the branched chain amino acid, L-leucine, and consequent impaired global protein synthesis has also been reported to contribute to sarcopenia in cirrhosis.^{3,94–97}

To better understand how to correct the progressive depletion of muscle mass in cirrhotic patients, molecular mechanisms of muscle wasting have recently been investigated (Fig. 2). Molecular pathways that regulate skeletal muscle mass include myostatin, a TGF β superfamily member that inhibits protein synthesis and potentially increases proteolysis.⁸⁸ Data in animal models, humans and cellular systems have consistently shown that myostatin expression is increased in cirrhosis.^{95,98,99} In addition to impaired protein synthesis, proteolysis is also required for loss of muscle mass.^{63,66} The ubiquitin proteasome pathway and autophagy are currently believed to be the dominant mechanisms of skeletal muscle proteolysis.^{63,100} Human skeletal muscle from patients with cirrhosis and preclinical models of hyperammonaemia show increased autophagy with impaired or unaltered proteasome-mediated proteolysis.^{95,100,101} A more extensive view of molecular mechanisms of muscle wasting in patients with liver cirrhosis is reviewed in Refs. 63,65.

Strategies to improve muscle mass in cirrhosis

A number of potential therapeutic strategies to improve muscle mass in patients with cirrhosis have been evaluated. These include dietary manipulations, increased physical activity and exercise,^{3,102–104} hormone replacement therapies,¹⁰⁵ ammonia-lowering strategies and targeting the underlying liver disease.^{106–109}

Nutritional supplementation

It is advised that any nutritional interventions follow the general recommendations reported as “energy and protein requirements in cirrhotic patients” (previous paragraph). However, an adequate calorie and protein intake is difficult to achieve in malnourished sarcopenic patients with advanced liver disease. Oral nutritional supplement and branched chain amino acid (BCAA) supplements have been utilised in clinical trials to overcome this issue^{110,111} showing some benefits.

In patients with malnutrition and cirrhosis, who are unable to achieve adequate dietary intake with the oral diet (even with oral supplements), short-term enteral or parenteral nutrition should be used to overcome the phase of underfeeding. Nutritional guidelines proposed by international medical societies for enteral and parenteral nutrition in patients with chronic liver disease are reported (Table S1).

Enteral feeding has been utilised in malnourished cirrhotic patients admitted to hospital, but despite promising individual studies, systematic meta-analyses have not shown significant benefits in terms of survival.^{11,12,112} There are also conflicting data on the benefits of parenteral nutritional supplementation in patients with cirrhosis, but this is likely to have a beneficial role during prolonged periods of poor oral intake including encephalopathy, gastrointestinal bleeding and impaired gut motility or ileus.¹¹³ The use of enteral and parenteral nutrition in the perioperative setting is dealt with in a dedicated section.

There is limited but consistent data that supplemental nutrition improves quality of life if it results in an increase in lean body mass, even though direct studies on sarcopenia are currently unavailable.¹¹⁴

Exercise and physical activity

In addition to nutritional supplementation, increased physical activity and exercise are also anabolic stimuli that can improve muscle mass and function. However, consistent long-term data in cirrhosis are lacking.^{87,115} Endurance or aerobic exercise improves skeletal muscle functional capacity but not

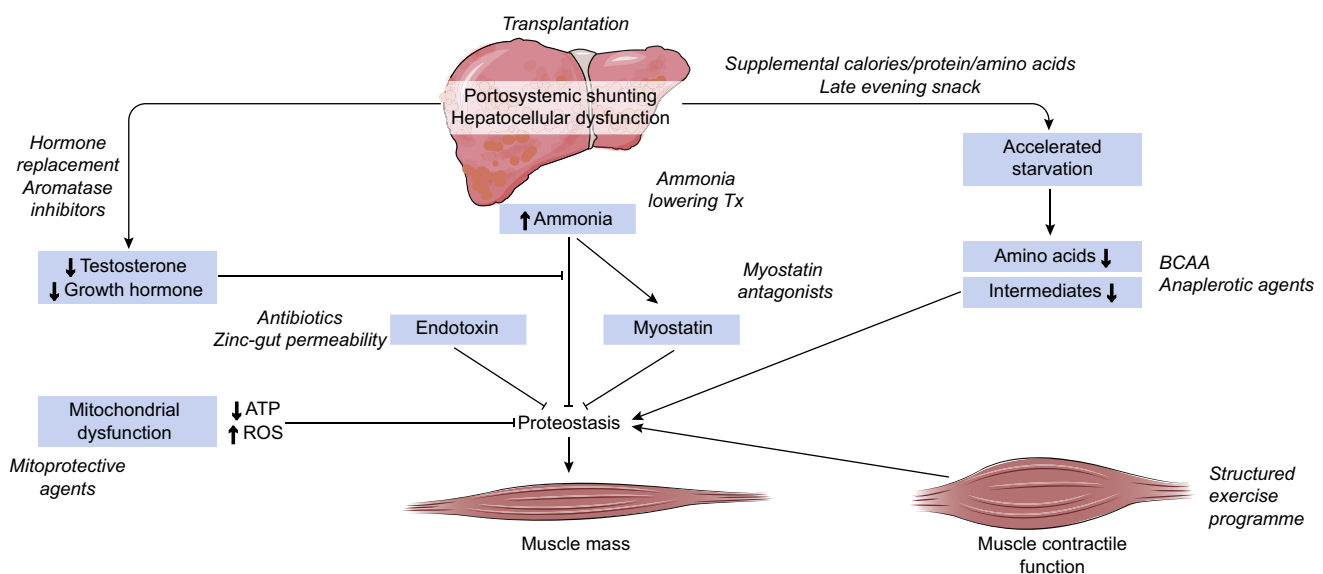


Fig. 2. Mechanisms and potential targets for anabolic resistance and dysregulated proteostasis resulting in sarcopenia and/or failure to respond to standard supplementation. Adapted from Dasarathy S. et al. 2016.⁶⁵ BCAA, branched chain amino acid; ROS, reactive oxygen species; Tx, treatment.

Clinical Practice Guidelines

necessarily muscle mass.¹¹⁶ Resistance exercise promotes an increase in skeletal muscle mass.¹¹⁶ However, exercise also increases muscle ammonia generation and portal pressure,^{117,118} both of which can have adverse effects in cirrhotic patients. Despite these potential adverse responses, beneficial effects have been reported.^{103,104} Since both muscle loss and impaired contractile function are components of sarcopenia in cirrhosis, a combination of resistance and endurance exercise would probably be appropriate and beneficial, as confirmed by emerging data indicating the benefit of a moderate intensity exercise regimen in cirrhosis.¹⁰⁴

Nutrient supplementation following physical activity is beneficial in physiological states, but whether such an intervention is beneficial in cirrhosis is currently unknown.^{119,120} Continued impaired functional capacity and reduced peak oxygen consumption are associated with decreased survival and poor post-transplant outcomes.^{121,122} Hence measures to increase functional capacity are likely to improve long-term clinical outcomes in cirrhosis.¹⁰²

Other strategies

Hormone replacement therapy utilising growth hormone or testosterone has been proposed but has not been consistently effective.^{91,92,123,124} Furthermore caution is needed when using testosterone because of the possibility of increasing the risk of hepatocellular carcinoma.¹⁰⁵

A number of reports in preclinical models have shown that hyperammonaemia results in impaired protein synthesis and increased autophagy, both of which result in loss of muscle mass.^{99,100}

Long-term ammonia-lowering strategies may result in increased muscle mass and contractile strength but the data are derived from preclinical studies and require validation in human studies.¹⁰⁹

Nutritional approach and management of obesity in patients with liver cirrhosis

Two studies have shown that obesity is at least as frequent in compensated cirrhosis as it is in the general population, ranging from 20 to 35%,^{13,125} regardless of the origin of liver disease. In NASH-related cirrhosis obesity is present in most cases. Moreover, a sedentary lifestyle is highly prevalent in patients with cirrhosis and might be seen as a cofactor, leading to an increase in BW in this population. In the HALT-C trial¹²⁵ the risk of histological progression or decompensation increased by 14% for each increase in BMI quartile, and the risk of progression increased by 35% in patients whose BW increased by >5% at one year.

In a randomised controlled trial comparing the use of timolol or placebo to prevent the onset of gastroesophageal varices, BMI was associated with clinical decompensation, independently of portal hypertension and albumin, in patients with no varices and an hepatic venous pressure gradient ≥ 6 mmHg.¹³

Data from different studies suggest that a reduction in BW improves outcomes in obese patients with compensated cirrhosis.^{102,125,126} This was achieved by a programme of lifestyle intervention including nutritional therapy and supervised moderate intensity physical exercise. A weight decrease ≥ 5 –10% is considered an adequate goal, associated with a reduced rate of disease progression in patients included in the HALT-C trial.¹²⁵ Dietary intake is aimed to guarantee both moderate caloric restriction and adequate protein intake. Indeed, although good

quality data are lacking, particular attention must be paid to the protein intake needed to maintain muscle mass, because of the potential risk of exacerbating sarcopenia during weight loss interventions.

No clear-cut data is available regarding the best type of physical exercise (aerobic vs. anaerobic; endurance vs. resistance/strength training) and its duration in this population. In patients with portal hypertension, avoidance of abdominal pressure seems reasonable even though there is some data suggesting that resistance exercise is probably safe.¹²⁶ Exercise needs to be tailored to the patient's ability, beginning with moderate intensity and maintained for the long-term.

Recommendations

- Nutritional counselling should be performed in cirrhotic patients with malnutrition, when possible by a multidisciplinary team, helping patients to achieve adequate caloric and protein intake. (**Grade II-2, C2**)
- Optimal daily energy intake should not be lower than the recommended 35 kcal/kg. actual BW/d (in non-obese individuals). (**Grade II-2, B1**)
- Optimal daily protein intake should not be lower than the recommended 1.2–1.5 g/kg. actual BW/d. (**Grade II-2, B1**)
- Include late evening oral nutritional supplementation and breakfast in dietary regimen of malnourished decompensated cirrhotic patients. (**Grade II-1, B1**)
- BCAA supplements and leucine enriched amino acid supplements should be considered in decompensated cirrhotic patients when adequate nitrogen intake is not achieved by oral diet. (**Grade II-1, C1**)
- In patients with malnutrition and cirrhosis who are unable to achieve adequate dietary intake with the oral diet (even with oral supplements), a period of enteral nutrition is recommended. (**Grade II-1, B1**)
- Patients with cirrhosis, whenever possible, can be encouraged to avoid hypomobility and to progressively increase physical activity to prevent and/or ameliorate sarcopenia. (**Grade II-1, C2**)
- Implement a nutritional and lifestyle programme to achieve progressive weight loss (>5–10%) in obese cirrhotic patients (BMI >30 kg/m² corrected for water retention). (**Grade II-2, C1**)
- A tailored, moderately hypocaloric (-500–800 kcal/d) diet, including adequate protein intake (>1.5 g proteins/kg.ideal BW/d) can be adopted to achieve weight loss without compromising protein stores in obese cirrhotic patients. (**Grade II-1, C2**)

New research should address the following topics

1. Does the improvement in muscle mass and/or muscle function improve clinical outcomes (lower the risk of first decompensation, ascites, infection and encephalopathy, reduce hospital readmissions, decrease length of hospital stay, reduce risk of falls, improve survival)?

2. Do ammonia-lowering strategies in decompensated cirrhosis reverse muscle loss and improve clinical outcomes?
3. Does a gradual increase in physical activity delay or reverse muscle loss and contractile dysfunction? What type and duration of exercise are beneficial in cirrhotic patients?
4. Is the addition of supplements (leucine, isoleucine or other nutrient supplements) needed to lower ammonia and increase mitochondrial intermediates during training?
5. How can therapies targeting the muscle protein synthesis pathway or dysregulated muscle autophagy be implemented?
6. How can anabolic resistance be overcome, or the underlying causes of anabolic resistance in cirrhotic patients be reversed?

Micronutrients

In general, vitamin deficiencies in liver disease are related to hepatic dysfunction, diminished reserves and, with increasing disease severity, inadequate dietary intake and malabsorption.

Fat-soluble vitamin deficiencies are common. A retrospective study reported that the majority of liver disease patients being considered for transplantation presented with vitamin A and D deficiencies.¹²⁷

The prevalence of vitamin D deficiency in the general population ranges from 20 to 100% when referring to serum 25-hydroxyvitamin D (25(OH)D) concentrations <20 ng/ml, and affects all age groups.¹²⁸ In patients with chronic liver disease vitamin D (25(OH)D) levels below 20 ng/ml have been reported in between 64 and 92% of patients, predominantly in chronic cholestatic conditions, and usually inversely correlated with more advanced disease and Child-Pugh score.^{129,130} Although low vitamin D levels might, in part, be due to decreased plasma binding proteins in the presence of liver insufficiency, some evidence in pre-cirrhotic stages provide support for a true nutritional deficit. Recent data suggest a close correlation between vitamin D levels and response to treatment in patients with hepatitis C virus infection, non-alcoholic fatty liver disease and those who develop hepatocellular carcinoma.¹³⁰⁻¹³²

Based on these data, it is advisable to assess plasma vitamin D (25(OH)D) levels in all patients with chronic liver disease, particularly in those with advanced disease,^{128,130} non-alcoholic fatty liver and cholestatic disorders.¹³³ Although there are no specific recommendations in patients with chronic liver disease except for those with chronic cholestasis, it seems reasonable to supplement all chronic liver disease patients with vitamin D levels below 20 ng/ml with oral vitamin D until reaching a serum vitamin D level above 30 ng/ml. Higher doses may be necessary in patients with non-alcoholic fatty liver disease.¹³⁴ Vitamin K deficiency should always be considered in patients who are jaundiced or whose liver disease is cholestatic in origin, and parenteral supplementation might be needed.

Patients with both alcohol and non-alcohol related cirrhosis are prone to deficiencies in water-soluble vitamins, particularly thiamine (B1). They often exhibit evidence at autopsy of

Wernicke's encephalopathy, even in the absence of a history/clinical signs during life.¹³⁵ If Wernicke's encephalopathy is suspected, generous parenteral thiamine supplementation is mandatory. Deficiencies in pyridoxine (B6), folate (B9) and cobalamin (B12) may also develop rapidly in chronic liver disease resulting from diminished hepatic storage.¹³⁶ However, good quality data on their prevalence and/or need for supplementation are scarce. As vitamin status is not easily assessed and multivitamin supplementation is cheap and substantially side effect free, a course of oral multivitamin supplementation could be justified in decompensated patients.

Hyponatraemia is common in patients with cirrhosis and is more likely to occur when the intake of sodium is low, and that of water unchanged or increased.¹³⁷ Thus, careful monitoring of both sodium and water intake is required. If severe hyponatraemia is corrected, this needs to be done slowly, to avoid the risk of central pontine myelinolysis.¹³⁸ A reduction in dietary sodium intake is recommended in patients with ascites,¹³⁹ although evidence in this respect is limited and conflicting.¹⁴⁰ Sodium intake should certainly not be reduced below 60 mmol/d, as this makes the diet unpalatable, potentially compromising energy and protein intake.¹⁴¹ Reductions in circulating levels of calcium, magnesium, and iron need to be considered and corrected.¹⁴² Tissue zinc concentrations are reduced in patients with cirrhosis and zinc has been implicated in the pathogenesis of HE. However, data on the effects of zinc supplementation on mental performance have been conflicting.¹⁴³⁻¹⁴⁵ Selenium deficiency has been related to the severity of hepatic fibrosis in patients with hepatitis C and identified as one of the factors contributing to insulin resistance in these patients.¹⁴⁶ Patients with cirrhosis have elevated total body manganese levels, which may result in selective manganese accumulation in the basal ganglia.¹⁴⁷ While there is no clear relationship between such a phenomenon and HE, it is probably reasonable to avoid nutritional supplements containing manganese.

Specific evidence about the beneficial effect of micronutrients and vitamin supplementation in cirrhotic patients is not available. However, confirmed or clinically suspected deficiency should be treated based on accepted general recommendations and common practice.

Recommendations

- In cirrhotic patients, administer micronutrients and vitamins to treat confirmed or clinically suspected deficiency. (**Grade II-1, C1**)
- Assess vitamin D levels in cirrhotic patients, as deficiency is highly prevalent and may adversely affect clinical outcomes. (**Grade II-3, B1**)
- Supplement vitamin D orally in cirrhotic patients with vitamin D levels <20 ng/ml, to reach serum vitamin D (25(OH)D) >30 ng/ml. (**Grade II-1, B1**)
- In cirrhotic patients with ascites under sodium restriction (recommended intake of sodium ~80 mmol day = 2 g of sodium corresponding to 5 g of salt added daily to the diet according to EASL guidelines) take care to improve diet palatability as this regime may cause a reduction in caloric intake. (**Grade II-2, B1**)

Clinical Practice Guidelines

Nutritional treatment options for hepatic encephalopathy

The relationship between malnutrition and HE has been known since the seminal observation that decreased energy intake determines weight loss and coma in Eck's fistula dogs.¹⁴⁸ Human studies also support this association. HE occurs more frequently in malnourished patients with cirrhosis, and there is an inverse relationship between muscle mass and blood ammonia levels.^{149,150} Sarcopenia, as assessed by the skeletal muscle index, is an independent risk factor for the development of HE after transjugular intrahepatic portosystemic shunt placement.¹⁵¹ Muscle plays an important role in ammonia removal¹⁵² by increasing glutamine synthesis, a reaction that is catalysed by the enzyme glutamine synthetase.¹⁵³ This has generally been thought of as a straightforward, benign process of ammonia disposal but evidence is accumulating that hyperammonaemia may impair muscle function and contribute to muscle loss,¹⁵⁴ thus establishing a vicious circle. There is also evidence that lowering ammonia levels can reverse sarcopenia in animal models.¹⁵⁵ Recently a randomised clinical trial showed that nutritional intervention (30–35 kcal/kg.BW/d, 1.0–1.5 g vegetable protein/kg.BW/d for six months) was able to improve neuropsychiatric performance in patients with minimal HE, and decrease their risk of developing overt HE compared to no nutritional intervention.¹¹⁴

Energy requirements in patients with cirrhosis and HE are thought to be the same as those of patients with cirrhosis *per se*.¹⁵⁶ Patients with HE need to avoid long periods of fasting, and should be encouraged to split their caloric and protein intake into small, frequent meals. It is advisable that breakfast⁷⁹ and a late evening snack⁸⁰ also include some proteins (see also paragraph: *Energy and protein requirements in patients with liver cirrhosis*).

Dysregulated nitrogen metabolism plays a major role in the development of HE and its modulation is key to HE management. Up until the middle of the 20th century, meat protein was administered to patients with cirrhosis to avoid catabolism.¹⁵⁷ Then, a few uncontrolled studies showed that decreased protein intake was associated with better mental status in patients with HE and porto-systemic shunts,¹⁵⁸ leading to a widespread practice of chronic protein restriction.¹⁵⁹ Protein restriction is now considered detrimental, except perhaps, for very short periods of time, in patients with severe overt HE and gastrointestinal bleeding. There is sufficient evidence that, in general, patients with HE tolerate diets with a normal protein content,⁸⁶ and their nitrogen requirements are the same as those of patients with cirrhosis *per se*.¹⁶⁰

The type of protein ingested may be important. The original demonstration that Eck's fistula dogs fed with fish/milk protein rather than meat developed fewer/no behavioural abnormalities¹⁶¹ led to the idea that patients with HE may benefit from the replacement of meat with dairy/vegetable protein. Subsequent uncontrolled, human studies showed that dairy protein is better tolerated than protein from mixed sources and that vegetable protein is better tolerated than meat protein.^{83,162,163} While there is a good pathophysiological basis for the use of dairy/vegetable diets in patients with HE, the results of the clinical studies undertaken remain unconvincing.¹⁶⁴ In addition, concerns have been raised in relation to tolerability/palatability, and thus potential negative effects on overall caloric intake.¹⁵⁶ This is likely to depend on the features of the staple diet. Interestingly, a 14-day casein-vegetable, high-protein, high-calorie diet was shown to improve mental performance and to decrease

ammonia levels in 150 patients with overt HE.⁸⁵ One of the advantages of vegetable diets may be due to their fibre content rather than protein content, as fibre has both prebiotic and laxative properties. While increased dietary fibre may be of value in patients with HE, the available literature is limited,¹⁶⁵ and increasing fibre consumption is difficult even in the healthy population. Notably, support from a multidisciplinary nutrition team has been shown to be useful in patients with cirrhosis⁷⁷ and should be considered in patients with HE.

A decreased serum ratio of BCAA to aromatic amino acids has been associated with a poor prognosis,¹⁶⁶ but there is limited evidence that the original assumptions behind BCAA supplementation in HE are correct. However, BCAA supplements, in daily divided doses, may facilitate the provision of an adequate nitrogen intake in patients who are intolerant to meat protein.^{167,168} The replacement of meat with dairy/vegetable protein plus BCAA supplements is likely to be preferable to a reduction in total protein intake. Long-term, oral BCAA supplementation may also have nutritional value.^{110,169} Palatability has proven to be a significant issue. In addition, costs and the possibility to prescribe BCAA as a drug (*vs.* a food supplement) vary considerably between countries.

It has also been shown that L-leucine alone can reverse the decrease in disturbed muscle protein homeostasis (proteostasis) due to hyperammonaemia.¹⁷⁰ A Cochrane meta-analysis included 16 randomised clinical trials, comparing oral or intravenous BCAA supplementation *vs.* a control intervention in 827 patients with HE.¹⁷¹ Oral BCAA had a positive impact on HE. However, oral or intravenous BCAA did not influence mortality, quality of life or nutritional status. No firm conclusions could be reached on their nutritional effects and on how they compare with non-absorbable disaccharides/antibiotics.¹⁷² Their use intravenously for episodic overt HE is not supported by the available evidence.

In patients with HE grade III-IV, as oral dietary intake is unfeasible or impossible, in keeping with common practice in patients with neurologic coma, nutrition should be provided by nasogastric tube or parenterally.

Recommendations

- Nutritional status and the presence of sarcopenia should be evaluated in patients with HE. (**Grade II-3, B1**)
- Avoid protein restriction in patients with HE. (**Grade II-1, A1**)
- Optimal daily protein and energy intake should not be lower than the general recommendations for cirrhotic patients (recommendations 14 and 15). (**Grade II-1, A1**)
- Encourage the consumption of vegetables and dairy protein. (**Grade II-3, B1**)
- BCAA supplementation should be considered to improve neuropsychiatric performance and to reach the recommended nitrogen intake. (**Grade I-1, A1**)
- Oral dietary intake is preferred in patients who can tolerate it. In patients with grade III-IV encephalopathy, who are unable to eat, provide nutrition by nasogastric tube (in patients with protected airways) or parenterally. (**Grade II-1, B1**)

Nutritional treatment options in cirrhotic patients with bone diseases

'Hepatic osteodystrophy', including osteoporosis and osteomalacia, has been used for years to describe the bone disease of patients with liver damage. Osteoporosis, characterised by loss of bone mass and quality that leads to fragility fractures, is common in patients with chronic liver disease.¹⁷³ Osteomalacia resulting from poor bone mineralisation is uncommon and only present when associated with persistent vitamin D deficiency in individuals with severe and long-lasting cholestasis and intestinal malabsorption.¹⁷⁴ Nutritional, hormonal, metabolic, genetic, and inflammatory factors play a significant role in the pathogenesis of osteoporosis in patients with chronic liver disease, mainly because of decreased bone formation.

The diagnosis of osteoporosis is based on bone mineral density (BMD) that is generally measured by DEXA. According to World Health Organization, osteoporosis is considered when BMD is 2.5 standard deviations below the young average value (T-score ≤ -2.5) and osteopenia when the T-score is between -1 and -2.5 , and severe or 'established' osteoporosis refers to individuals who meet densitometric criteria and have one or more fragility fractures.¹⁷⁵

Prevalence of osteoporosis in patients with chronic liver disease depends mostly on patient selection and diagnostic criteria. In summary, about 30% of patients have osteoporosis, with higher prevalence in patients with cholestasis including primary biliary cholangitis (PBC) and primary sclerosing cholangitis.¹⁷⁶⁻¹⁸⁸ In patients eligible for liver transplantation the prevalence of osteoporosis is 30%.¹⁸⁸⁻¹⁹¹ Fracture prevalence ranges between 7% and 35%,^{176-188,192-198} being more frequent in postmenopausal women than in young women and men,¹⁸² and in patients receiving corticosteroid therapy.¹⁹⁹ Vertebral fractures are associated with osteoporosis and osteopenia with a T-score lower than -1.5 in patients with PBC and primary sclerosing cholangitis.¹⁸⁰ Patients with a T-score below -1.5 have a high risk of hip and vertebral fractures, supporting this T-score as a practical guide for starting specific therapy.

Osteoporosis is frequently observed in transplanted patients,²⁰⁰ and associated with a high incidence of fractures (25 to 35%) within the first year after liver transplantation.^{201,202} Improvements in the management of bone health

in transplanted patients have reduced the incidence of fractures.²⁰³

According to the WHO, bone densitometry of the lumbar spine and hip is the gold standard procedure for the diagnosis of osteoporosis and osteopenia. Lateral X-rays of dorsal and lumbar spine should also be performed to disclose vertebral fractures.²⁰⁴ Laboratory measurements to identify abnormal calcium and vitamin D metabolism are also appropriate. The biochemical markers of bone turnover can be determined, but they are most helpful for monitoring the response to therapy. Undecalcified transiliac bone biopsy is recommended only in the exceptional cases with presumed osteomalacia.

The diagnosis and management of bone disease in patients with chronic liver disease is summarised in (Fig. 3). Bone densitometry should be evaluated in patients with previous fragility fractures and those treated with corticosteroids and before liver transplantation.^{180,204} Bone densitometry needs to be assessed in patients with cholestatic diseases or if any of the described risk factors are found, and in cirrhotics. In patients within normal BMD, it is advisable to repeat DEXA after two to three years, as is suggested in the non-cirrhotic population. In conditions associated with rapid bone loss, such as in cholestatic patients with more than one risk factor for osteoporosis, and in those in whom high-dose corticosteroid therapy has recently been initiated, DEXA can be repeated in a shorter interval of approximately one year. This schedule is also recommended for patients with advanced cirrhosis, particularly in those eligible for transplantation. Inaccuracies in BMD and bone marker measurements in patients with cirrhosis or chronic cholestasis need to be taken into consideration.^{205,206} Recognition of the risk factors for bone loss including those for osteoporosis and fractures in patients with chronic liver disease is recommended, as in general population and in postmenopausal women (Table 2).²⁰⁴

A balanced diet is recommended because patients with chronic liver disease are often malnourished. Supplements of calcium (1,000–1,500 mg/d) and 25(OH)D (400–800 IU/d or 260 μ g every two weeks) or the dose required to preserve normal levels should be provided. However, there is no definite data confirming the efficacy of these supplements in preventing bone loss in patients with liver disease.¹³⁴ Physical activity is recommended, in particular with exercises designed to improve

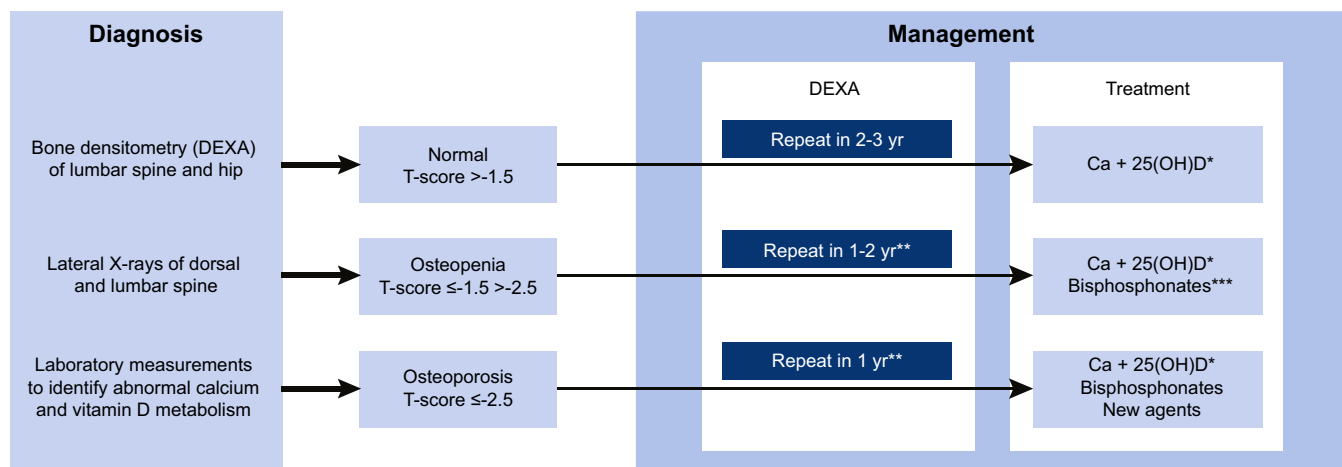


Fig. 3. Diagnosis and management of bone disease in patients with chronic liver disease. *Calcium (1,000–1,500 mg/d) and 25(OH)D (400–800 IU/d or 260 μ g every two weeks) to preserve normal levels. **According to the severity of liver disease and cholestasis, and in patients taking corticosteroids. ***Depending on additional risk factors. 25(OH)D, 25-hydroxyvitamin D. DEXA; dual-energy X-ray absorptiometry.

Clinical Practice Guidelines

Table 2. Risk factors for the development of osteoporosis in chronic liver disease.

Risk factors
Alcohol abuse
Smoking
Body mass index lower than 19 kg/m ²
Male hypogonadism
Early menopause
Secondary amenorrhea of more than 6 months
Family history of osteoporotic fracture
Treatment with corticosteroids (5 mg/d or more of prednisone for 3 months or longer)
Advanced age

the mechanics of the spine. Factors that contribute to bone loss need to be reduced to a minimum, including alcohol and tobacco use. Corticosteroids ought to be minimised whenever possible.

Different pharmacological therapies have been proposed for improving bone mass in patients with chronic liver disease, but most studies have included small numbers of patients, and therefore it is difficult to reach any definite conclusions. Furthermore, no clear anti-fracture effect has been demonstrated, and except for osteoporosis in PBC and after liver transplantation, no systematic studies have been reported.

There is no general agreement concerning the appropriate time to start treatment, but patients with established osteoporosis, and therefore with fragility fractures, should be treated to reduce the risk of further fractures. Since patients with PBC with a lumbar or a proximal femur T-score lower than <-1.5 have a high risk of vertebral fracture, it seems reasonable to consider specific therapy in these patients,¹⁸⁰ and in all patients with osteoporosis before transplantation.

Bisphosphonates are anti-catabolic drugs which increase bone mass and reduce the incidence of fractures in postmenopausal osteoporosis. Their effects in chronic liver disease are not entirely defined, mostly because of the very limited number of studies and small numbers of patients.^{207–212} Nonetheless, etidronate, alendronate and ibandronate increase bone mass in patients with PBC, resulting in these patients achieving similar bone mass as patients with osteoporosis associated with other causes.^{208,211} Serious adverse events have not been observed and potential harmful effects of bisphosphonates have not been reported in liver patients. Moreover, bisphosphonates appear to be well tolerated, although it would be reasonable to exercise caution in using the drug in cirrhotics with recent oesophageal banding/sclerotherapy to avoid oesophageal injury. Bisphosphonates may also have a role in transplanted patients.^{213–215} Favourable effects have been reported using zoledronic acid,²¹⁶ and weekly alendronate.²¹⁷ Moreover, zoledronic acid reduces bone turnover and results in lower fracture rates.²¹⁶

In patients with liver disease, hormonal replacement therapy was limited for many years as it was considered harmful. Transdermal oestrogens prevent bone loss or even increase BMD in patients with PBC or autoimmune cirrhosis and in postmenopausal women after liver transplantation, with no adverse effects on the liver.^{218–221} In males with hemochromatosis and hypogonadism, treatment with testosterone and venesection is also effective.²²² One concern about restoring testosterone levels in cirrhotic patients is the increased risk of hepatocellular carcinoma.¹⁰⁵

There are no studies assessing the effects of anabolic drugs in liver patients with osteoporosis, but PTH 1–34 is a potential

therapy for osteoporosis in these patients²²³ as well as denosumab, a human monoclonal IgG antibody that binds to RANKL and inhibits bone resorption.

Recommendations

- Evaluate BMD in cirrhotic patients and in patients with cholestatic liver diseases, those receiving long-term corticosteroid treatment, and before liver transplantation. (**Grade II-2, A1**)
- Utilise lumbar and femoral densitometry (DEXA) to diagnose osteoporosis and osteopenia. Lateral X-rays of dorsal and lumbar spine for diagnosing vertebral fractures. (**Grade II-3, A1**)
- Repeat DEXA after two to three years in patients within normal BMD, and within one year when rapid bone loss is expected. (**Grade II-1, B1**)
- Include supplements of calcium (1,000–1,500 mg/d) and 25(OH)D (400–800 IU/d or 260 µg every two weeks) in patients with chronic liver disease and a T-score below -1.5. (**Grade II-3, A1**)
- Utilise bisphosphonates in cirrhotic patients with osteoporosis and in those waiting for liver transplantation. (**Grade I, A1**)
- Consider testosterone supplementation and venesection in males with hemochromatosis and hypogonadism. (**Grade II-2, B1**)

New research should address the following topics

1. The use and safety of anabolic drugs, such as PTH 1–34 and denosumab as potential new therapies for osteoporosis in patients with cirrhosis.

Clinical scenarios requiring special considerations Malnutrition in patients undergoing liver transplantation and liver surgery

Preoperative nutrition

Both severe under nutrition (BMI <18.5 kg/m²) and severe obesity (BMI >40 kg/m²) prior to liver transplantation are associated with increased mortality and morbidity.^{224–227} Severe obesity prior to liver transplantation is associated with a higher prevalence of comorbidities (diabetes, hypertension), cryptogenic cirrhosis and increased mortality from infectious complications, cardiovascular disease and cancer.^{226,227} Some investigators found that severe obesity was associated with increased morbidity and mortality even when patients were classified according to “dry BMI”²²⁷ while others have reported that the amount of ascites and not BMI contributes to the increased mortality risk.²²⁸

Numerous descriptive studies have shown higher morbidity and mortality in cirrhotic patients with protein malnutrition when such patients undergo liver transplantation.^{57,229–231} Recently, sarcopenia and frailty have been shown to confer an increased risk of morbidity and mortality on the waiting list and after transplantation.^{58,232–241} Patients on the waiting list are at risk because of an inadequate food or caloric intake,²⁴² and those consuming a low protein diet (<0.8 g/kg.BW/d) have

an increased waiting list mortality.²⁴³ Nevertheless, there are no formal trials showing that preoperative nutritional intervention improves clinical outcome.

In less advanced and predominantly cholestatic liver cirrhosis, nutritional counselling plus oral nutritional supplement (ONS) improved MAMC and grip strength compared to nutritional counselling alone, while there was no difference in mortality.²⁴⁴ In one pilot study, ONS enriched with ω -3 fatty acids, arginine and nucleotides appeared to reduce infectious complications.²⁴⁵ In a subsequent randomised trial, perioperative immunonutrition did not provide significant benefits in terms of preoperative total body protein status or postoperative outcome compared to standard ONS.²⁴⁶

A combined meta-analysis of different interventions like glutamine or ω -3 fatty acids by the parenteral or enteral route reported overall beneficial effects regarding morbidity and liver function, but no significant difference in survival.²⁴⁷ Kaido and colleagues observed less postoperative infections in their transplanted patients who received preoperative immuno-modulating ONS.²⁴⁸ Interestingly, BCAA supplementation only conferred better survival to sarcopenic patients on the waiting list but not to non-sarcopenic individuals.²⁴⁹

In malnourished cirrhotic patients, the risk of postoperative morbidity and mortality is increased after abdominal surgery.^{250,251} Liver glycogen is depleted in cirrhotic patients. Therefore it is advisable to take great care to shorten periods without nutrient intake in order to avoid gluconeogenesis from muscle protein in an already protein depleted individual.^{252,253} Additionally, in liver surgery, adoption of enhanced recovery after surgery (ERAS) protocols improves morbidity and reduces length of hospital stay when, among other measures, patients are given carbohydrate containing clear liquids up to 2 h preoperatively, and are fed early and mobilised.^{254–256}

Recommendations

- Screen for malnutrition and sarcopenia in cirrhotic patients listed for transplantation or scheduled for elective surgery. Sarcopenia can be treated prior to elective surgery, as this will enable improvement in body protein status and clinical outcomes. (**Grade III, B2**)
- Screen for sarcopenic obesity, with body composition analysis, in obese cirrhotic patients being considered for surgery, in order to identify those at higher risk of morbidity and mortality. (**Grade III, C2**)
- Preoperatively, if the treatment goal is maintenance of nutritional status, plan a total energy intake of 30 kcal/kg.BW/d and a protein intake of 1.2 g/kg.BW/d. If improvement of nutritional status is the goal, plan a total energy intake of 35 kcal/kg.BW/d and a protein intake of 1.5 g/kg.BW/d. (**Grade II-3, B1**)
- For preoperative nutrition, utilise standard nutrition regimens, since specialised regimens (e.g. BCAA-enriched, immune-enhancing diets) have not been shown to improve morbidity or mortality in intervention trials. (**Grade II-1, B1**)

Postoperative nutrition

After transplantation, postoperative parenteral or enteral nutrition decreases time on the ventilator, length of ICU stay, and reduces the risk of bacterial infections and bile duct complications compared to only infusing fluids and electrolytes.²⁵⁸ Early enteral nutrition (12 h after the operation) is associated with fewer viral infections and better nitrogen retention than parenteral nutrition.²⁵⁸ In a direct comparison between parenteral nutrition and early enteral nutrition, both strategies proved to be equally effective with regard to the maintenance of nutritional state but enteral nutrition reduced complication rates and costs.²⁵⁹ For early enteral nutrition in adult liver transplant recipients, whole protein formulae with²⁶⁰ or without pre- and probiotics^{258,259} or peptide-based formulae via catheter jejunostomy^{261,262} have been used. Formulae were administered via nasogastric or nasoduodenal tubes after endoscopic placement²⁵⁹ or via catheter jejunostomy^{261–263} placed during laparotomy. According to a European survey²⁵⁶ the combination of enteral nutrition and parenteral nutrition was used in 10/16 centres, while 3/16 used parenteral nutrition or enteral nutrition alone.

After liver transplantation there is a considerable nitrogen loss and patients remain in negative nitrogen balance for a prolonged period^{245,264} necessitating an increase in the provision of protein or amino acids. Protein or amino acid provision of 1.0–1.5 g/kg.BW/d has been reported,²⁵⁷ which is slightly lower than recommended for hospitalised or critically ill patients.^{265–267} No difference was observed between a standard and a BCAA-enriched amino acid solution for parenteral nutrition after liver transplantation.²⁵⁷

In the early postoperative phase there is often a disturbance in glucose metabolism associated with insulin resistance. In this situation blood glucose levels should be managed like in other surgical patients.²⁵⁶ In the first 48 h postoperatively, a lower provision of energy (<18 kcal/kg.BW/d)²⁶⁸ may be advisable in the light of the growing recognition of autophagy as a source of endogenous substrate supply.²⁶⁹ Less postoperative morbidity and shortened length of stay was reported, seemingly in duplicate, when ω -3 fatty acids were used for parenteral nutrition.^{270,271} The function of the hepatic reticuloendothelial system was reported to recover better when a medium chain triglyceride/long chain triglyceride emulsion was given as parenteral nutrition instead of a long chain triglyceride emulsion after liver transplantation.²⁷²

For the growing subgroup of obese patients undergoing surgery, recent guidelines recommend energy (25 kcal/kg ideal BW/d) and protein (2.0 g/kg ideal BW/d) intakes based on ideal BW calculated based on height and gender.²⁷³

Chronic dilutional hyponatraemia is not infrequent in cirrhotic patients and should be corrected carefully after transplantation in order to avoid pontine myelinolysis.²⁷⁴ Magnesium levels need to be monitored in order to detect and treat cyclosporine or tacrolimus induced hypomagnesaemia.²⁷⁵ The simultaneous administration of enteral feeding with tacrolimus did not interfere with tacrolimus absorption.²⁷⁶

Long-term survivors of liver transplantation are at considerable risk of becoming overweight or even obese and developing relevant morbidities due to the metabolic syndrome.^{277–279} Attention should be paid to avoiding sarcopenic obesity,²⁸⁰ using stringent postoperative physiotherapy and dietary counselling to overcome the deconditioning of pre-transplant chronic liver disease.^{281–283}

Clinical Practice Guidelines

Sarcopenic cirrhotic patients undergoing non-transplant surgery like resection for hepatocellular carcinoma have an increased mortality risk.^{284,285} In cirrhotic patients undergoing non-transplant visceral surgery, the complication rate and nitrogen economy can be improved when nutrition support is provided instead of just fluid and electrolytes.^{286,263} It may be safely assumed that enteral nutrition in the early postoperative period would yield at least equally beneficial results. However, there are no studies comparing the two regimens in cirrhotic patients. There are data to suggest a beneficial effect on gut permeability of sequential parenteral/enteral nutrition (via jejunostomy), compared to parenteral nutrition alone or no postoperative nutrition at all.²⁶³

In cirrhotic patients undergoing liver resection, oesophageal transection and splenectomy or splenorenal shunt, the rate of HE was not increased when a conventional amino acid solution (50 g/d) was used for postoperative parenteral nutrition instead of a BCAA-enriched amino acid solution (40 g/d).²⁸⁶ Tang and colleagues reported improved immune function and preserved gut mucosal integrity when parenteral nutrition supplemented with glutamine and human growth hormone was used in cirrhotic patients.²⁸⁷

Recommendations

- After liver transplantation initiate normal food and/or enteral tube feeding preferably within 12–24 h postoperatively, or as soon as possible, to reduce infection rates. (**Grade II-2, B1**)
- When oral or enteral nutrition are not possible or are impracticable, parenteral nutrition should be used instead of no feeding in order to reduce complication rates, time on mechanical ventilation and ICU stay. (**Grade II-2, B1**)
- After the acute postoperative phase, provide an energy intake of 35 kcal/kg.BW/d and a protein intake of 1.5 g/kg.BW/d. (**Grade II-2, C1**)
- After other surgical procedures, patients with chronic liver disease can be managed according to the ERAS protocol. (**Grade III, C2**)
- Consider parenteral nutrition in patients with unprotected airways and HE when cough and swallow reflexes are compromised, or enteral nutrition is contraindicated or impractical. (**Grade II-2, C1**)
- Enteral tube feeding and/or parenteral nutrition with a reduced target energy intake (25 kcal/kg.BW/d) and an increased target protein intake (2.0 g/kg.BW/d) can be utilised in obese patients. (**Grade III, C2**)

Nutrition in the critically ill cirrhotic patient

In critically ill cirrhotic patients (patients hospitalised for severe complications of the disease, acute-on-chronic liver failure, patients in an intensive care unit, those with acute alcoholic hepatitis), maintenance of an adequate nutritional support is a relevant target. Direct measurement of REE by indirect calorimetry is advisable in these patients whenever possible. Of note, as in all critically ill patients, tight glucose control is indicated to prevent hyper- and hypoglycaemia.^{29,113} Critically

ill cirrhotic patients more frequently require enteral or parenteral nutrition. Nutritional guidelines exist, proposed by different medical societies, for patients with chronic liver disease in different settings (Table S1).

Alcoholic liver disease and severe/acute alcoholic hepatitis

Nielsen et al. focussed on patients with alcoholic cirrhosis and found a mean TEE of 32 ± 7 kcal/kg.BW/d⁷⁰ and, in another study, a median TEE of 28 kcal/kg.BW/d,⁸¹ similar to that in patients with cirrhosis of different aetiologies. However patients with active alcohol abuse may have a higher REE than healthy controls.^{288,289}

An early study in alcoholic hepatitis showed that the intravenous addition of 70 to 85 g of amino acids to a diet containing 3,000 kcal and 100 g of protein over four weeks, was safe and associated with a lower mortality rate.²⁹⁰ A low protein intake was also shown to worsen HE in 136 patients with alcoholic hepatitis and HE.²⁹¹

Two meta-analyses evaluated the impact of nutritional supplementation in patients with alcoholic liver disease.^{12,112} The first included seven randomised controlled studies testing oral or intravenous nutritional supplementation vs. a hospital diet in 262 patients, for 21 to 28 days. Nutritional support improved the resolution of clinical encephalopathy but did not influence mortality, ascites or laboratory parameters.¹¹² The second included studies comparing parenteral nutrition, enteral nutrition and ONS with no nutritional support.¹² No benefits of nutritional support were observed but a trend towards a better nitrogen balance with parenteral nutrition was noted.

It was hypothesised that enteral nutrition improves survival to the same extent as corticosteroids. One study found no difference in mortality in 71 patients with severe alcoholic hepatitis (71% with cirrhosis) randomised to prednisone or enteral nutrition for 28 days.²⁹² In another study, 136 patients with alcoholic hepatitis were randomised to methylprednisolone and enteral nutrition or methylprednisolone with conventional nutrition. No difference in the six-month mortality was observed but caloric intake lower than 21.5 kcal/kg.BW/d was associated with higher mortality.²⁹³

Immunonutrition

Immunonutrition, *i.e.* nutritional solutions enriched with ω -3 fatty acids, arginine and nucleotides, has also been proposed. One retrospective study examined patients undergoing elective liver resection, who received preoperative oral immunonutrition for seven days ($n = 84$; 14 patients with cirrhosis) vs. no oral supplementation ($n = 63$, 5 patients with cirrhosis). The authors found no impact on postoperative complications.²⁹⁴ When considering the components of immunonutrition separately, oral ω -3 fatty acids administered to cirrhotic patients with ascites and renal failure did not improve renal function but increased bleeding time and arterial blood pressure, leading the authors to argue against their use in cirrhotic patients.²⁹⁵

Nutritional support in gastrointestinal bleeding

In a randomised study, 22 patients with liver cirrhosis were administered enteral nutrition by a nasogastric tube or no oral intake during the first four days after acute bleeding from oesophageal varices.²⁹⁶ No difference in re-bleeding, nutritional status, liver function, duration of hospital stay and mortality was observed between the groups after a follow-up of 35 days. Nevertheless, experts recommend withholding enteral nutrition for 48–72 h after acute bleeding,^{297,298} because enteral nutrition

increases splanchnic blood flow, which in turn may increase portal pressure and the risk of variceal re-bleeding.

Recommendations

- Consider nutritional status and presence of sarcopenia in all critically ill cirrhotic patients and provide nutritional support while treating other manifestations of severe decompensation. (**Grade II-3, C1**)
- Supplement dietary intake by enteral nutrition in critically ill cirrhotic patients who are unable to achieve adequate dietary intake by mouth. If oral diet or enteral nutrition are not tolerated or contraindicated parenteral nutrition should be provided. (**Grade III, A1**)
- Naso-gastroenteric tubes are not contraindicated in patients with non-bleeding oesophageal varices. (**Grade II-2, A1**)
- It is best to avoid PEG insertion in cirrhotic patients because of the risk of bleeding. (**Grade III, B2**)
- Take care that daily energy intake in critically ill cirrhotic patients is not lower than the recommended 35–40 kcal/kg.BW/d or 1.3 times measured REE. (**Grade II-2, B1**)
- Take care that daily protein intake in critically ill cirrhotic patients is not lower than the recommended 1.2–1.3 g/kg.BW/d. (**Grade II-2, B1**)
- Standard nutrition regimens can be utilised in critically ill cirrhotic patients since no advantage has been shown for specialised regimens (e.g. BCAA-enriched, immune-enhancing diets) in terms of morbidity or mortality. (**Grade II-1, B2**)
- In critically ill cirrhotic patients with HE, BCAA-enriched solutions should be used to facilitate resolution. (**Grade I, A1**)
- In cirrhosis and severe/acute alcoholic hepatitis, nutritional support should be provided to accelerate resolution of HE, and, improve survival in patients with low calorie intake. (**Grade II-1, A1**)

New research should address the following topics

1. In the absence of indirect calorimetry, what is the best way to calculate energy needs in critically ill patients with liver diseases?
2. Does increased energy and protein intake improve outcomes in critically ill patients with liver diseases?
3. Should the nutritional recommendations differ according to the nutritional status at baseline?

Conclusion

Nutrition in chronic liver disease is a rapidly evolving field and the object of growing clinical interest. These Clinical Practice Guidelines have been produced with the aim of summarising current knowledge in this field. Nutritional impairment and sarcopenia have been recognised as crucial complications of

chronic liver disease, which severely impact on prognosis. Undernutrition and sarcopenia are also interconnected with other complications of cirrhosis such as HE, ascites and the susceptibility to infection. The molecular mechanisms underlying sarcopenia have been investigated in depth and clarified to some extent. At the same time, a novel condition has emerged, *i.e.* the occurrence of overweight and obesity in cirrhotic patients. This deserves both clinical attention and further study. Recent research has provided preliminary data on the potential benefit of physical activity in patients with cirrhosis. However, both the target population and the exact features of the activity (*i.e.* isometric vs. aerobic) need to be better defined.

While working on these guidelines the authors had to recognise that high quality studies in the field of nutrition in liver disease are often lacking. There are many reasons for this, including uncertainties in definitions, lack of standardised outcomes and scarcity of interventional studies. These require large, homogeneous groups of patients and long-term observation. Consequently, the available studies are often underpowered, and even meta-analyses have failed to reach definite conclusions. Thus, in several instances the working panel produced recommendations, and sometimes even strong recommendations, despite the lack of high quality, specific evidence. These were based on the literature from parallel research and clinical fields, recommendations directed to the general population, standard practice, feasibility, costs and, ultimately, common sense. While lack of strong evidence represents a limitation, the present document reflects the actual situation of this clinical and research field, and it will hopefully serve as a basis for future studies providing better data to reinforce or modify current practices.

Conflict of interest

S.D. reports grant/research support from the National Institutes of Health, RO1 DK113196; RO1 GM 119174; R21 AR071045; P50 AA024333; UO1 AA021890; UO1061732 and the Mikati Foundation Research Grant. A.P. reports grants, personal fees and other from Intercept Pharmaceuticals, other from Novartis, personal fees from Cymabay Therapeutics, Inc., outside the submitted work. M.M. reports personal fees from Kedrion. All other authors report no conflicts of interest.

Please refer to the accompanying ICMJE disclosure forms for further details.

Acknowledgements

We would like to thank the reviewers of this Clinical Practice Guideline for their time and critical reviewing; EASL Governing Board, Dominique Valla, Stephan Bischoff, Puneeta Tandon.

Supplementary data

Supplementary data associated with this article can be found, in the online version, at <https://doi.org/10.1016/j.jhep.2018.06.024>.

References

- [1] Nutritional status in cirrhosis. Italian multicentre cooperative project on nutrition in liver cirrhosis. *J Hepatol* 1994;21:317–325.
- [2] Caregaro L, Alberino F, Amodio P, Merkel C, Bolognesi M, Angeli P, et al. Malnutrition in alcoholic and virus-related cirrhosis. *Am J Clin Nutr* 1996;63:602–609.
- [3] Dasarathy S. Consilience in sarcopenia of cirrhosis. *J Cachexia Sarcopenia Muscle* 2012;3:225–237.

Clinical Practice Guidelines

- [4] Huisman EJ, Trip EJ, Siersema PD, van Hoek B, van Erpecum KJ. Protein energy malnutrition predicts complications in liver cirrhosis. *Eur J Gastroenterol Hepatol* 2011;23:982–989.
- [5] Merli M, Lucidi C, Giannelli V, Giusto M, Riggio O, Falcone M, et al. Cirrhotic patients are at risk for health care-associated bacterial infections. *Clin Gastroenterol Hepatol* 2010;8:979–985.
- [6] Merli M, Giusto M, Lucidi C, Giannelli V, Pentassuglio I, Di Gregorio V, et al. Muscle depletion increases the risk of overt and minimal hepatic encephalopathy: results of a prospective study. *Metab Brain Dis* 2013;28:281–284.
- [7] Gunsar F, Raimondo ML, Jones S, Terreni N, Wong C, Patch D, et al. Nutritional status and prognosis in cirrhotic patients. *Aliment Pharmacol Ther* 2006;24:563–572.
- [8] Montano-Loza AJ, Meza-Junco J, Prado CM, Lieffers JR, Baracos VE, Bain VG, et al. Muscle wasting is associated with mortality in patients with cirrhosis. *Clin Gastroenterol Hepatol* 2012;10:166–173, 173 e161.
- [9] Englesbe MJ, Patel SP, He K, Lynch RJ, Schaubel DE, Harbaugh C, et al. Sarcopenia and mortality after liver transplantation. *J Am Coll Surg* 2010;211:271–278.
- [10] Ney M, Vandermeer B, van Zanten SJ, Ma MM, Gramlich L, Tandon P. Meta-analysis: oral or enteral nutritional supplementation in cirrhosis. *Aliment Pharmacol Ther* 2013;37:672–679.
- [11] Fialla AD, Israelsen M, Hamberg O, Krag A, Gluud LL. Nutritional therapy in cirrhosis or alcoholic hepatitis: a systematic review and meta-analysis. *Liver Int* 2015;35:2072–2078.
- [12] Koretz RL, Avenell A, Lipman TO. Nutritional support for liver disease. *Cochrane Database Syst Rev* 2012 CD008344.
- [13] Berzigotti A, Garcia-Tsao G, Bosch J, Grace ND, Burroughs AK, Morillas R, et al. Obesity is an independent risk factor for clinical decompensation in patients with cirrhosis. *Hepatology* 2011;54:555–561.
- [14] Montano-Loza AJ, Angulo P, Meza-Junco J, Prado CM, Sawyer MB, Beaumont C, et al. Sarcopenic obesity and myosteatosis are associated with higher mortality in patients with cirrhosis. *J Cachexia Sarcopenia Muscle* 2016;7:126–135.
- [15] Nishikawa H, Nishiguchi S. Sarcopenia and sarcopenic obesity are prognostic factors for overall survival in patients with cirrhosis. *Intern Med* 2016;55:855–856.
- [16] Andrews J, Guyatt G, Oxman AD, Alderson P, Dahm P, Falck-Ytter Y, et al. GRADE guidelines: 14. Going from evidence to recommendations: the significance and presentation of recommendations. *J Clin Epidemiol* 2013;66:719–725.
- [17] Tandon P, Raman M, Mourtzakis M, Merli M. A practical approach to nutritional screening and assessment in cirrhosis. *Hepatology* 2017;65:1044–1057.
- [18] Teitelbaum D, Guenter P, Howell WH, Kochevar ME, Roth J, Seidner DL. Definition of terms, style, and conventions used in A.S.P.E.N. guidelines and standards. *Nutr Clin Pract* 2005;20:281–285.
- [19] Charney P. Nutrition screening vs. nutrition assessment: how do they differ? *Nutr Clin Pract* 2008;23:366–372.
- [20] Cederholm T, Bosaeus I, Barazzoni R, Bauer J, Van Gossum A, Klek S, et al. Diagnostic criteria for malnutrition – An ESPEN nutrition Consensus Statement. *Clin Nutr* 2015;34:335–340.
- [21] Tandon P, Ney M, Irwin I, Ma MM, Gramlich L, Bain VG, et al. Severe muscle depletion in patients on the liver transplant wait list: its prevalence and independent prognostic value. *Liver Transpl* 2012;18:1209–1216.
- [22] Borhofen SM, Gerner C, Lehmann J, Fimmers R, Gortzen J, Hey B, et al. The royal free hospital-nutritional prioritizing tool is an independent predictor of deterioration of liver function and survival in cirrhosis. *Dig Dis Sci* 2016;61:1735–1743.
- [23] Booi AN, Menendez J, Norton HJ, Anderson WE, Ellis AC. Validation of a screening tool to identify undernutrition in ambulatory patients with liver cirrhosis. *Nutr Clin Pract* 2015;30:683–689.
- [24] Cruz-Jentoft AJ, Baeyens JP, Bauer JM, Boirie Y, Cederholm T, Landi F, et al. Sarcopenia: European consensus on definition and diagnosis: report of the European Working Group on Sarcopenia in Older People. *Age Ageing* 2010;39:412–423.
- [25] Peng S, Plank LD, McCall JL, Gillanders LK, McIlroy K, Gane EJ. Body composition, muscle function, and energy expenditure in patients with liver cirrhosis: a comprehensive study. *Am J Clin Nutr* 2007;85:1257–1266.
- [26] Martin L, Birdsell L, Macdonald N, Reiman T, Clandinin MT, McCargar LJ, et al. Cancer cachexia in the age of obesity: skeletal muscle depletion is a powerful prognostic factor, independent of body mass index. *J Clin Oncol* 2013;31:1539–1547.
- [27] Carey EJ, Lai JC, Wang CW, Dasarathy S, Lobach I, Montano-Loza AJ, et al. A multicenter study to define sarcopenia in patients with end-stage liver disease. *Liver Transpl* 2017;23:625–633.
- [28] van Vugt JL, Levolger S, de Bruin RW, van Rosmalen J, Metselaar HJ, IJzerman JN. Systematic review and meta-analysis of the impact of computed tomography-assessed skeletal muscle mass on outcome in patients awaiting or undergoing liver transplantation. *Am J Transplant* 2016;16:2277–2292.
- [29] Plauth M, Cabre E, Riggio O, Assis-Camilo M, Pirlich M, Kondrup J, et al. ESPEN nutrition guidelines on enteral nutrition: liver disease. *Clin Nutr* 2006;25:285–294.
- [30] Tandon P, Low G, Mourtzakis M, Zenith L, Myers RP, Abraldes JG, et al. A model to identify sarcopenia in patients with cirrhosis. *Clin Gastroenterol Hepatol* 2016;14:e1473.
- [31] Alberino F, Gatta A, Amodio P, Merkel C, Di Pascoli L, Boffo G, et al. Nutrition and survival in patients with liver cirrhosis. *Nutrition* 2001;17:445–450.
- [32] Morgan MY, Madden AM, Soulsby CT, Morris RW. Derivation and validation of a new global method for assessing nutritional status in patients with cirrhosis. *Hepatology* 2006;44:823–835.
- [33] Giusto M, Lattanzi B, Albanese C, Galtieri A, Farcomeni A, Giannelli V, et al. Sarcopenia in liver cirrhosis: the role of computed tomography scan for the assessment of muscle mass compared with dual-energy X-ray absorptiometry and anthropometry. *Eur J Gastroenterol Hepatol* 2015;27:328–334.
- [34] Wu LW, Lin YY, Kao TW, Lin CM, Liaw FY, Wang CC, et al. Mid-arm muscle circumference as a significant predictor of all-cause mortality in male individuals. *PLoS One* 2017;12 e0171707.
- [35] Morgan MY, Madden AM, Jennings G, Elia M, Fuller NJ. Two-component models are of limited value for the assessment of body composition in patients with cirrhosis. *Am J Clin Nutr* 2006;84:1151–1162.
- [36] Alvares-da-Silva MR, Reverbel da Silveira T. Comparison between handgrip strength, subjective global assessment, and prognostic nutritional index in assessing malnutrition and predicting clinical outcome in cirrhotic outpatients. *Nutrition* 2005;21:113–117.
- [37] Tandon P, Tangri N, Thomas L, Zenith L, Shaikh T, Carbonneau M, et al. A rapid bedside screen to predict unplanned hospitalization and death in outpatients with cirrhosis: a prospective evaluation of the clinical frailty scale. *Am J Gastroenterol* 2016;111:1759–1767.
- [38] Wang CW, Feng S, Covinsky KE, Hayssen H, Zhou LQ, Yeh BM, et al. A comparison of muscle function, mass, and quality in liver transplant candidates: results from the functional assessment in liver transplantation study. *Transplantation* 2016;100:1692–1698.
- [39] Fried LP, Tangen CM, Walston J, Newman AB, Hirsch C, Gottdiener J, et al. Frailty in older adults: evidence for a phenotype. *J Gerontol A Biol Sci Med Sci* 2001;56:M146–M156.
- [40] Lai JC, Feng S, Terrault NA, Lizaola B, Hayssen H, Covinsky K. Frailty predicts waitlist mortality in liver transplant candidates. *Am J Transplant* 2014;14:1870–1879.
- [41] Hasse J, Strong S, Gorman MA, Liepa G. Subjective global assessment: alternative nutrition-assessment technique for liver-transplant candidates. *Nutrition* 1993;9:339–343.
- [42] Bakshi N, Singh K. Nutrition assessment and its effect on various clinical variables among patients undergoing liver transplant. *Hepatobiliary Surg Nutr* 2016;5:358–371.
- [43] Ferreira LG, Anastacio LR, Lima AS, Correia MI. Assessment of nutritional status of patients waiting for liver transplantation. *Clin Transplant* 2011;25:248–254.
- [44] Figueiredo FA, Dickson ER, Pasha TM, Porayko MK, Therneau TM, Malinchoc M, et al. Utility of standard nutritional parameters in detecting body cell mass depletion in patients with end-stage liver disease. *Liver Transpl* 2000;6:575–581.
- [45] Fernandes SA, Bassani L, Nunes FF, Aydos ME, Alves AV, Marroni CA. Nutritional assessment in patients with cirrhosis. *Arq Gastroenterol* 2012;49:19–27.
- [46] Figueiredo FA, Perez RM, Freitas MM, Kondo M. Comparison of three methods of nutritional assessment in liver cirrhosis: subjective global assessment, traditional nutritional parameters, and body composition analysis. *J Gastroenterol* 2006;41:476–482.
- [47] Naveau S, Belda E, Borotto E, Genuist F, Chaput JC. Comparison of clinical judgment and anthropometric parameters for evaluating nutritional status in patients with alcoholic liver disease. *J Hepatol* 1995;23:234–235.
- [48] Sasidharan M, Nistala S, Narendhran RT, Muruges M, Bhatia SJ, Rathi PM. Nutritional status and prognosis in cirrhotic patients. *Trop Gastroenterol* 2012;33:257–264.

- [49] Kalafateli M, Mantzoukis K, Choi Yau Y, Mohammad AO, Arora S, Rodrigues S, et al. Malnutrition and sarcopenia predict post-liver transplantation outcomes independently of the Model for End-stage Liver Disease score. *J Cachexia Sarcopenia Muscle* 2017;8:113–121.
- [50] Gabrielson DK, Scaffidi D, Leung E, Stoyanoff L, Robinson J, Nisenbaum R, et al. Use of an abridged scored Patient-Generated Subjective Global Assessment (abPG-SGA) as a nutritional screening tool for cancer patients in an outpatient setting. *Nutr Cancer* 2013;65:234–239.
- [51] De Keyser W, Huybrechts I, De Vriendt V, Vandevijvere S, Slimani N, Van Oyen H, et al. Repeated 24-hour recalls versus dietary records for estimating nutrient intakes in a national food consumption survey. *Food Nutr Res* 2011;55.
- [52] Ahluwalia N, Dwyer J, Terry A, Moshfegh A, Johnson C. Update on NHANES dietary data: focus on collection, release, analytical considerations, and uses to inform public policy. *Adv Nutr* 2016;7:121–134.
- [53] Detsky AS, McLaughlin JR, Baker JP, Johnston N, Whittaker S, Mendelson RA, et al. What is subjective global assessment of nutritional status? *JPEN J Parenter Enteral Nutr* 1987;11:8–13.
- [54] Carias S, Castellanos AL, Vilchez V, Nair R, Dela Cruz AC, Watkins J, et al. Nonalcoholic steatohepatitis is strongly associated with sarcopenic obesity in patients with cirrhosis undergoing liver transplant evaluation. *J Gastroenterol Hepatol* 2016;31:628–633.
- [55] Choudhary NS, Saigal S, Saraf N, Mohanka R, Rastogi A, Goja S, et al. Sarcopenic obesity with metabolic syndrome: a newly recognized entity following living donor liver transplantation. *Clin Transplant* 2015;29:211–215.
- [56] Dasarathy S. Posttransplant sarcopenia: an underrecognized early consequence of liver transplantation. *Dig Dis Sci* 2013;58:3103–3111.
- [57] Merli M, Giusto M, Gentili F, Novelli G, Ferretti G, Riggio O, et al. Nutritional status: its influence on the outcome of patients undergoing liver transplantation. *Liver Int* 2010;30:208–214.
- [58] Englesbe MJ, Patel SP, He K, Lynch RJ, Schaubel DE, Harbaugh C, et al. Sarcopenia and mortality after liver transplantation. *J Am Coll Surg* 2010;211:271–278.
- [59] Ney M, Vandermeer B, Van Zanten S, Ma M, Gramlich L, Tandon P. Meta-analysis: oral or enteral nutritional supplementation in cirrhosis. *Aliment Pharmacol Ther* 2013;37:672–679.
- [60] Merli M, Riggio O, Dally L. Does malnutrition affect survival in cirrhosis? PINC (Policentrica Italiana Nutrizione Cirrosi). *Hepatology* 1996;23:1041–1046.
- [61] Glass C, Hipskind P, Tsien C, Malin SK, Kasumov T, Shah SN, et al. Sarcopenia and a physiologically low respiratory quotient in patients with cirrhosis: a prospective controlled study. *J Appl Physiol* 1985;2013:559–565.
- [62] Glass C, Hipskind P, Cole D, Lopez R, Dasarathy S. Handheld calorimeter is a valid instrument to quantify resting energy expenditure in hospitalized cirrhotic patients: a prospective study. *Nutr Clin Pract* 2012;27:677–688.
- [63] Dasarathy S, Merli M. Sarcopenia from mechanism to diagnosis and treatment in liver disease. *J Hepatol* 2016;65:1232–1244.
- [64] Dasarathy S. Nutrition and alcoholic liver disease: effects of alcoholism on nutrition, effects of nutrition on alcoholic liver disease, and nutritional therapies for alcoholic liver disease. *Clin Liver Dis* 2016;20:535–550.
- [65] Dasarathy S. Cause and management of muscle wasting in chronic liver disease. *Curr Opin Gastroenterol* 2016;32:159–165.
- [66] Dasarathy J, McCullough AJ, Dasarathy S. Sarcopenia in alcoholic liver disease: clinical and molecular advances. *Alcohol Clin Exp Res* 2017;41:1419–1431.
- [67] Greco AV, Mingrone G, Benedetti G, Capristo E, Tataranni PA, Gasbarrini G. Daily energy and substrate metabolism in patients with cirrhosis. *Hepatology* 1998;27:346–350.
- [68] Guglielmi FW, Panella C, Buda A, Budillon G, Caregato L, Clerici C, et al. Nutritional state and energy balance in cirrhotic patients with or without hypermetabolism. Multicentre prospective study by the 'Nutritional Problems in Gastroenterology' Section of the Italian Society of Gastroenterology (SIGE). *Dig Liver Dis* 2005;37:681–688.
- [69] Riggio O, Angeloni S, Ciuffa L, Nicolini G, Attili AF, Albanese C, et al. Malnutrition is not related to alterations in energy balance in patients with stable liver cirrhosis. *Clin Nutr* 2003;22:553–559.
- [70] Nielsen K, Kondrup J, Martinsen L, Dossing H, Larsson B, Stilling B, et al. Long-term oral refeeding of patients with cirrhosis of the liver. *Br J Nutr* 1995;74:557–567.
- [71] Dolz C, Raurich JM, Ibanez J, Obrador A, Marse P, Gaya J. Ascites increases the resting energy expenditure in liver cirrhosis. *Gastroenterology* 1991;100:738–744.
- [72] Madden AM, Morgan MY. Resting energy expenditure should be measured in patients with cirrhosis, not predicted. *Hepatology* 1999;30:655–664.
- [73] Tajika M, Kato M, Mohri H, Miwa Y, Kato T, Ohnishi H, et al. Prognostic value of energy metabolism in patients with viral liver cirrhosis. *Nutrition* 2002;18:229–234.
- [74] Knudsen AW, Krag A, Nordgaard-Lassen I, Frandsen E, Tofteng F, Mortensen C, et al. Effect of paracentesis on metabolic activity in patients with advanced cirrhosis and ascites. *Scand J Gastroenterol* 2016;51:601–609.
- [75] Muller MJ, Bottcher J, Selberg O, Weselmann S, Boker KH, Schwarze M, et al. Hypermetabolism in clinically stable patients with liver cirrhosis. *Am J Clin Nutr* 1999;69:1194–1201.
- [76] Hipskind P, Glass C, Charlton D, Nowak D, Dasarathy S. Do handheld calorimeters have a role in assessment of nutrition needs in hospitalized patients? A systematic review of literature. *Nutr Clin Pract* 2011;26:426–433.
- [77] Iwasa M, Iwata K, Hara N, Hattori A, Ishidome M, Sekoguchi-Fujikawa N, et al. Nutrition therapy using a multidisciplinary team improves survival rates in patients with liver cirrhosis. *Nutrition* 2013;29:1418–1421.
- [78] Tsien CD, McCullough AJ, Dasarathy S. Late evening snack: exploiting a period of anabolic opportunity in cirrhosis. *J Gastroenterol Hepatol* 2012;27:430–441.
- [79] Vaisman N, Katzman H, Carmiel-Haggai M, Lusthaus M, Niv E. Breakfast improves cognitive function in cirrhotic patients with cognitive impairment. *Am J Clin Nutr* 2010;92:137–140.
- [80] Plank LD, Gane EJ, Peng S, Muthu C, Mathur S, Gillanders L, et al. Nocturnal nutritional supplementation improves total body protein status of patients with liver cirrhosis: a randomized 12-month trial. *Hepatology* 2008;48:557–566.
- [81] Nielsen K, Kondrup J, Martinsen L, Stilling B, Wikman B. Nutritional assessment and adequacy of dietary intake in hospitalized patients with alcoholic liver cirrhosis. *Br J Nutr* 1993;69:665–679.
- [82] Swart GR, van den Berg JW, van Vuure JK, Rietveld T, Wattimena DL, Frenkel M. Minimum protein requirements in liver cirrhosis determined by nitrogen balance measurements at three levels of protein intake. *Clin Nutr* 1989;8:329–336.
- [83] Fenton JC, Knight EJ, Humpherson PL. Milk-and-cheese diet in portal-systemic encephalopathy. *Lancet* 1966;287:164–166.
- [84] Bianchi GP, Marchesini G, Fabbri A, Rondelli A, Bugianesi E, Zoli M, et al. Vegetable versus animal protein diet in cirrhotic patients with chronic encephalopathy. A randomized cross-over comparison. *J Intern Med* 1993;233:385–392.
- [85] Gheorghe L, Iacob R, Vadan R, Iacob S, Gheorghe C. Improvement of hepatic encephalopathy using a modified high-calorie high-protein diet. *Rom J Gastroenterol* 2005;14:231–238.
- [86] Cordoba J, Lopez-Hellin J, Planas M, Sabin P, Sanpedro F, Castro F, et al. Normal protein diet for episodic hepatic encephalopathy: results of a randomized study. *J Hepatol* 2004;41:38–43.
- [87] Rennie MJ, Tipton KD. Protein and amino acid metabolism during and after exercise and the effects of nutrition. *Annu Rev Nutr* 2000;20:457–483.
- [88] Periyalwar P, Dasarathy S. Malnutrition in cirrhosis: contribution and consequences of sarcopenia on metabolic and clinical responses. *Clin Liver Dis* 2012;16:95–131.
- [89] Tessari P. Protein metabolism in liver cirrhosis: from albumin to muscle myofibrils. *Curr Opin Clin Nutr Metab Care* 2003;6:79–85.
- [90] DiCecco SR, Wieners EJ, Wiesner RH, Southern PA, Plevak DJ, Krom RA. Assessment of nutritional status of patients with end-stage liver disease undergoing liver transplantation. *Mayo Clin Proc* 1989;64:95–102.
- [91] Sinclair M, Grossmann M, Hoermann R, Angus PW, Gow PJ. Testosterone therapy increases muscle mass in men with cirrhosis and low testosterone: a randomised controlled trial. *J Hepatol* 2016;65:906–913.
- [92] Assy N, Hochberg Z, Amit T, Shen-Orr Z, Enat R, Baruch Y. Growth hormone-stimulated insulin-like growth factor (IGF) I and IGF-binding protein-3 in liver cirrhosis. *J Hepatol* 1997;27:796–802.
- [93] Chen HW, Dunn MA. Muscle at risk: the multiple impacts of ammonia on sarcopenia and frailty in cirrhosis. *Clin Transl Gastroenterol* 2016;7:e170.
- [94] Dam G, Ott P, Aagaard NK, Vilstrup H. Branched-chain amino acids and muscle ammonia detoxification in cirrhosis. *Metab Brain Dis* 2013;28:217–220.
- [95] Tsien C, Davuluri G, Singh D, Allaway A, Ten Have GA, Thapaliya S, et al. Metabolic and molecular responses to leucine-enriched branched chain

Clinical Practice Guidelines

- amino acid supplementation in the skeletal muscle of alcoholic cirrhosis. *Hepatology* 2015;61:2018–2029.
- [96] Nishikawa H, Enomoto H, Ishii A, Iwata Y, Miyamoto Y, Ishii N, et al. Elevated serum myostatin level is associated with worse survival in patients with liver cirrhosis. *J Cachexia Sarcopenia Muscle* 2017;8:915–925.
- [97] Holecek M. Branched-chain amino acid supplementation in treatment of liver cirrhosis: Updated views on how to attenuate their harmful effects on cataplerosis and ammonia formation. *Nutrition* 2017;41:80–85.
- [98] Dasarathy S, McCullough AJ, Muc S, Schneyer A, Bennett CD, Dodig M, et al. Sarcopenia associated with portosystemic shunting is reversed by follistatin. *J Hepatol* 2011;54:915–921.
- [99] Qiu J, Thapaliya S, Runkana A, Yang Y, Tsien C, Mohan ML, et al. Hyperammonemia in cirrhosis induces transcriptional regulation of myostatin by an NF-kappaB-mediated mechanism. *Proc Natl Acad Sci U S A* 2013;110:18162–18167.
- [100] Qiu J, Tsien C, Thapaliya S, Narayanan A, Weihl CC, Ching JK, et al. Hyperammonemia-mediated autophagy in skeletal muscle contributes to sarcopenia of cirrhosis. *Am J Physiol Endocrinol Metab* 2012;303:E983–E993.
- [101] Thapaliya S, Runkana A, McMullen MR, Nagy LE, McDonald C, Naga Prasad SV, et al. Alcohol-induced autophagy contributes to loss in skeletal muscle mass. *Autophagy* 2014;10:677–690.
- [102] Zenith L, Meena N, Ramadi A, Yavari M, Harvey A, Carbonneau M, et al. Eight weeks of exercise training increases aerobic capacity and muscle mass and reduces fatigue in patients with cirrhosis. *Clin Gastroenterol Hepatol* 2014;12:e1922.
- [103] Berzigotti A, Saran U, Dufour JF. Physical activity and liver diseases. *Hepatology* 2016;63:1026–1040.
- [104] Berzigotti A, Albillos A, Villanueva C, Genesca J, Ardevol A, Augustin S, et al. Effects of an intensive lifestyle intervention program on portal hypertension in patients with cirrhosis and obesity: the SportDiet study. *Hepatology* 2017;65:1293–1305.
- [105] Nagasue N, Yukaya H, Chang YC, Ogawa Y, Kohno H, Ito A. Active uptake of testosterone by androgen receptors of hepatocellular carcinoma in humans. *Cancer* 1986;57:2162–2167.
- [106] Gorostiaga EM, Navarro-Amezqueta I, Calbet JA, Sanchez-Medina L, Cusso R, Guerrero M, et al. Blood ammonia and lactate as markers of muscle metabolites during leg press exercise. *J Strength Cond Res* 2014;28:2775–2785.
- [107] Takeda K, Takemasa T. Expression of ammonia transporters Rhbg and Rhcg in mouse skeletal muscle and the effect of 6-week training on these proteins. *Physiol Rep* 2015:3.
- [108] McDaniel J, Davuluri G, Hill EA, Moyer M, Runkana A, Prayson R, et al. Hyperammonemia results in reduced muscle function independent of muscle mass. *Am J Physiol Gastrointest Liver Physiol* 2016;310:G163–G170.
- [109] Kumar A, Davuluri G, Silva RNE, Engelen M, Ten Have GAM, Prayson R, et al. Ammonia lowering reverses sarcopenia of cirrhosis by restoring skeletal muscle proteostasis. *Hepatology* 2017;65:2045–2058.
- [110] Nakaya Y, Harada N, Kakui S, Okada K, Takahashi A, Inoi J, et al. Severe catabolic state after prolonged fasting in cirrhotic patients: effect of oral branched-chain amino-acid-enriched nutrient mixture. *J Gastroenterol* 2002;37:531–536.
- [111] Yoshida T, Muto Y, Moriwaki H, Yamato M. Effect of long-term oral supplementation with branched-chain amino acid granules on the prognosis of liver cirrhosis. *Gastroenterol Jpn* 1989;24:692–698.
- [112] Antar R, Wong P, Ghali P. A meta-analysis of nutritional supplementation for management of hospitalized alcoholic hepatitis. *Can J Gastroenterol* 2012;26:463–467.
- [113] Plauth M, Cabre E, Campillo B, Kondrup J, Marchesini G, Schutz T, et al. ESPenteral nutrition Guidelines on Parenteral Nutrition: hepatology. *Clin Nutr* 2009;28:436–444.
- [114] Maharshi S, Sharma BC, Sachdeva S, Srivastava S, Sharma P. Efficacy of nutritional therapy for patients with cirrhosis and minimal hepatic encephalopathy in a randomized trial. *Clin Gastroenterol Hepatol* 2016;14:454–460.
- [115] Liao CD, Tsao JY, Wu YT, Cheng CP, Chen HC, Huang YC, et al. Effects of protein supplementation combined with resistance exercise on body composition and physical function in older adults: a systematic review and meta-analysis. *Am J Clin Nutr* 2017;106:1078–1091.
- [116] Baar K. Training for endurance and strength: lessons from cell signaling. *Med Sci Sports Exerc* 2006;38:1939–1944.
- [117] Dietrich R, Bachmann C, Lauterburg BH. Exercise-induced hyperammonemia in patients with compensated chronic liver disease. *Scand J Gastroenterol* 1990;25:329–334.
- [118] Garcia-Pagan JC, Santos C, Barbera JA, Luca A, Roca J, Rodriguez-Roisin R, et al. Physical exercise increases portal pressure in patients with cirrhosis and portal hypertension. *Gastroenterology* 1996;111:1300–1306.
- [119] Schoenfeld BJ, Aragon AA, Krieger JW. The effect of protein timing on muscle strength and hypertrophy: a meta-analysis. *J Int Soc Sports Nutr* 2013;10:53.
- [120] Beale DJ et al. Evidence inconclusive – comment on article by Schoenfeld. *J Int Soc Sports Nutr* 2016;13:37.
- [121] Jones JC, Coombes JS, Macdonald GA. Exercise capacity and muscle strength in patients with cirrhosis. *Liver Transpl* 2012;18:146–151.
- [122] Dharancy S, Lemyze M, Boleslawski E, Neviere R, Declerck N, Canva V, et al. Impact of impaired aerobic capacity on liver transplant candidates. *Transplantation* 2008;86:1077–1083.
- [123] Matsumoto R, Fukuoka H, Iguchi G, Nishizawa H, Bando H, Suda K, et al. Long-term effects of growth hormone replacement therapy on liver function in adult patients with growth hormone deficiency. *Growth Horm IGF Res* 2014;24:174–179.
- [124] Sinclair M, Gow PJ, Grossmann M, Angus PW. Review article: sarcopenia in cirrhosis—etiology, implications and potential therapeutic interventions. *Aliment Pharmacol Ther* 2016;43:765–777.
- [125] Everhart JE, Lok AS, Kim HY, Morgan TR, Lindsay KL, Chung RT, et al. Weight-related effects on disease progression in the hepatitis C antiviral long-term treatment against cirrhosis trial. *Gastroenterology* 2009;137:549–557.
- [126] Macias-Rodriguez RU, Ilarraza-Lomeli H, Ruiz-Margain A, Ponce-de-Leon-Rosales S, Vargas-Vorackova F, Garcia-Flores O, et al. Changes in hepatic venous pressure gradient induced by physical exercise in cirrhosis: results of a pilot randomized open clinical trial. *Clin Transl Gastroenterol* 2016;7:e180.
- [127] Venu M, Martin E, Saeian K, Gawrieh S. High prevalence of vitamin A deficiency and vitamin D deficiency in patients evaluated for liver transplantation. *Liver Transpl* 2013;19:627–633.
- [128] Holick MF, Binkley NC, Bischoff-Ferrari HA, Gordon CM, Hanley DA, Heaney RP, et al. Evaluation, treatment, and prevention of vitamin D deficiency: an Endocrine Society clinical practice guideline. *J Clin Endocrinol Metab* 2011;96:1911–1930.
- [129] Trautwein C, Possienke M, Schlitt HJ, Boker KH, Horn R, Raab R, et al. Bone density and metabolism in patients with viral hepatitis and cholestatic liver diseases before and after liver transplantation. *Am J Gastroenterol* 2000;95:2343–2351.
- [130] Stokes CS, Volmer DA, Grunhage F, Lammert F. Vitamin D in chronic liver disease. *Liver Int* 2013;33:338–352.
- [131] Barchetta I, Angelico F, Del Ben M, Baroni MG, Pozzilli P, Morini S, et al. Strong association between non alcoholic fatty liver disease (NAFLD) and low 25(OH) vitamin D levels in an adult population with normal serum liver enzymes. *BMC Med* 2011;9:85.
- [132] Petta S, Camma C, Scazzone C, Tripodo C, Di Marco V, Bono A, et al. Low vitamin D serum level is related to severe fibrosis and low responsiveness to interferon-based therapy in genotype 1 chronic hepatitis C. *Hepatology* 2010;51:1158–1167.
- [133] European Association for the Study of the L. EASL Clinical Practice Guidelines: management of cholestatic liver diseases. *J Hepatol* 2009;51:237–267.
- [134] Dasarathy J, Varghese R, Feldman A, Khiyami A, McCullough AJ, Dasarathy S. Patients with nonalcoholic fatty liver disease have a low response rate to vitamin D supplementation. *J Nutr* 2017.
- [135] Kril JJ, Butterworth RF. Diencephalic and cerebellar pathology in alcoholic and nonalcoholic patients with end-stage liver disease. *Hepatology* 1997;26:837–841.
- [136] Bemeur C, Butterworth RF. Nutrition in the management of cirrhosis and its neurological complications. *J Clin Exp Hepatol* 2014;4:141–150.
- [137] Cosgray RE, Hanna V, Davidhizar RE, Smith J. The water-intoxicated patient. *Arch Psychiatr Nurs* 1990;4:308–312.
- [138] Kleinschmidt-DeMasters BK, Norenberg MD. Rapid correction of hyponatremia causes demyelination: relation to central pontine myelinolysis. *Science* 1981;211:1068–1070.
- [139] European Association for the Study of the L. EASL clinical practice guidelines on the management of ascites, spontaneous bacterial peritonitis, and hepatorenal syndrome in cirrhosis. *J Hepatol* 2010;53:397–417.
- [140] Gu XB, Yang XJ, Zhu HY, Xu BY. Effect of a diet with unrestricted sodium on ascites in patients with hepatic cirrhosis. *Gut Liver* 2012;6:355–361.
- [141] Morando F, Rosi S, Gola E, Nardi M, Piano S, Fasolato S, et al. Adherence to a moderate sodium restriction diet in outpatients with cirrhosis and ascites: a real-life cross-sectional study. *Liver Int* 2015;35:1508–1515.

- [142] Huskisson E, Maggini S, Ruf M. The influence of micronutrients on cognitive function and performance. *J Int Med Res* 2007;35:1–19.
- [143] Bresci G, Parisi G, Banti S. Management of hepatic encephalopathy with oral zinc supplementation: a long-term treatment. *Eur J Med* 1993;2:414–416.
- [144] Takuma Y, Nouse K, Makino Y, Hayashi M, Takahashi H. Clinical trial: oral zinc in hepatic encephalopathy. *Aliment Pharmacol Ther* 2010;32:1080–1090.
- [145] Katayama K, Saito M, Kawaguchi T, Endo R, Sawara K, Nishiguchi S, et al. Effect of zinc on liver cirrhosis with hyperammonemia: a preliminary randomized, placebo-controlled double-blind trial. *Nutrition* 2014;30:1409–1414.
- [146] Himoto T, Yoneyama H, Kurokohchi K, Inukai M, Masugata H, Goda F, et al. Selenium deficiency is associated with insulin resistance in patients with hepatitis C virus-related chronic liver disease. *Nutr Res* 2011;31:829–835.
- [147] Inoue E, Hori S, Narumi Y, Fujita M, Kuriyama K, Kadota T, et al. Portal-systemic encephalopathy: presence of basal ganglia lesions with high signal intensity on MR images. *Radiology* 1991;179:551–555.
- [148] Thompson J, Schafer D, Haun J, Schafer G. Adequate diet prevents hepatic coma in dogs with Eck fistulas. *Surg Gynecol Obstetr* 1986;162:126–130.
- [149] Kalaitzakis E, Olsson R, Henfridsson P, Hugosson I, Bengtsson M, Jalan R, et al. Malnutrition and diabetes mellitus are related to hepatic encephalopathy in patients with liver cirrhosis. *Liver International* 2007;27:1194–1201.
- [150] Merli M, Giusto M, Lucidi C, Giannelli V, Pentassuglio I, Di Gregorio V, et al. Muscle depletion increases the risk of overt and minimal hepatic encephalopathy: results of a prospective study. *Metab Brain Dis* 2013;28:281–284.
- [151] Nardelli S, Lattanzi B, Torrissi S, Greco F, Farcomeni A, Gioia S, et al. Sarcopenia is risk factor for development of hepatic encephalopathy after transjugular intrahepatic portosystemic shunt placement. *Clin Gastroenterol Hepatol* 2017;15:934–936.
- [152] Olde Damink SW, Jalan R, Deutz NE, Redhead DN, Dejong CH, Hynd P, et al. The kidney plays a major role in the hyperammonemia seen after simulated or actual GI bleeding in patients with cirrhosis. *Hepatology* 2003;37:1277–1285.
- [153] Chatauret N, Desjardins P, Zwingmann C, Rose C, Rao KR, Butterworth RF. Direct molecular and spectroscopic evidence for increased ammonia removal capacity of skeletal muscle in acute liver failure. *J Hepatol* 2006;44:1083–1088.
- [154] McDaniel J, Davuluri G, Hill EA, Moyer M, Runkana A, Prayson R, et al. Hyperammonemia results in reduced muscle function independent of muscle mass. *Am J Physiol Gastrointest Liver Physiol* 2016;310:G163–G170.
- [155] Kumar A, Davuluri G, Engelen MP, Ten Have GA, Prayson R, Deutz NE, et al. Ammonia lowering reverses sarcopenia of cirrhosis by restoring skeletal muscle proteostasis. *Hepatology* 2017;65:2045–2058.
- [156] Amodio P, Bemeur C, Butterworth R, Cordoba J, Kato A, Montagnese S, et al. The nutritional management of hepatic encephalopathy in patients with cirrhosis: International Society for Hepatic Encephalopathy and Nitrogen Metabolism Consensus. *Hepatology* 2013;58:325–336.
- [157] Schwartz R, Phillips GB, Seegmiller JE, Gabuzda Jr GJ, Davidson CS. Dietary protein in the genesis of hepatic coma. *N Engl J Med* 1954;251:685–689.
- [158] Summerskill W, Wolfe SJ, Davidson CS. The management of hepatic coma in relation to protein withdrawal and certain specific measures. *Am J Med* 1957;23:59–76.
- [159] Soulsby CT, Morgan MY. Dietary management of hepatic encephalopathy in cirrhotic patients: survey of current practice in United Kingdom. *BMJ* 1999;318:1391.
- [160] Campollo O, Sprengers D, Dam G, Vilstrup H, McIntyre N. Protein tolerance to standard and high protein meals in patients with liver cirrhosis. *World J Hepatol* 2017;9:667–676.
- [161] Condon RE. Effect of dietary protein on symptoms and survival in dogs with an Eck fistula. *Am J Surg* 1971;121:107–114.
- [162] Bessman AN, Mirick GS. Blood ammonia levels following the ingestion of casein and whole blood. *J Clin Invest* 1958;37:990–998.
- [163] Greenberger NJ, Carley J, Schenker S, Bettinger I, Stammes C, Beyer P. Effect of vegetable and animal protein diets in chronic hepatic encephalopathy. *Dig Dis Sci* 1977;22:845–855.
- [164] Amodio P, Caregaro L, Patteno E, Marcon M, Del Piccolo F, Gatta A. Vegetarian diets in hepatic encephalopathy: facts or fantasies? *Dig Liver Dis* 2001;33:492–500.
- [165] Uribe M, Dibildox M, Malpica S, Guillermo E, Villalobos A, Nieto L, et al. Beneficial effect of vegetable protein diet supplemented with psyllium plantago in patients with hepatic encephalopathy and diabetes mellitus. *Gastroenterology* 1985;88:901–907.
- [166] Kawaguchi T, Izumi N, Charlton MR, Sata M. Branched-chain amino acids as pharmacological nutrients in chronic liver disease. *Hepatology* 2011;54:1063–1070.
- [167] Holecsek M. Three targets of branched-chain amino acid supplementation in the treatment of liver disease. *Nutrition* 2010;26:482–490.
- [168] Dam G, Ott P, Aagaard NK, Vilstrup H. Branched-chain amino acids and muscle ammonia detoxification in cirrhosis. *Metab Brain Dis* 2013;28:217–220.
- [169] Marchesini G, Bianchi G, Merli M, Amodio P, Panella C, Loguercio C, et al. Nutritional supplementation with branched-chain amino acids in advanced cirrhosis: a double-blind, randomized trial. *Gastroenterology* 2003;124:1792–1801.
- [170] Davuluri G, Krokowski D, Guan BJ, Kumar A, Thapaliya S, Singh D, et al. Metabolic adaptation of skeletal muscle to hyperammonemia drives the beneficial effects of l-leucine in cirrhosis. *J Hepatol* 2016;65:929–937.
- [171] Gluud LL, Dam G, Les I, Cordoba J, Marchesini G, Borre M, et al. Branched-chain amino acids for people with hepatic encephalopathy. *Cochrane Database Syst Rev* 2015 CD001939.
- [172] Gluud LL, Dam G, Les I, Marchesini G, Borre M, Aagaard NK, et al. Branched-chain amino acids for people with hepatic encephalopathy. *Cochrane Database Syst Rev* 2017;5 CD001939.
- [173] Guanabens N, Pares A. Liver and bone. *Arch Biochem Biophys* 2010;503:84–94.
- [174] Compston JE. Hepatic osteodystrophy: vitamin D metabolism in patients with liver disease. *Gut* 1986;27:1073–1090.
- [175] Assessment of fracture risk and its application to screening for postmenopausal osteoporosis. Report of a WHO Study Group. *World Health Organ Tech Rep Ser* 1994;843:1–129.
- [176] Menon KV, Angulo P, Weston S, Dickson ER, Lindor KD. Bone disease in primary biliary cirrhosis: independent indicators and rate of progression. *J Hepatol* 2001;35:316–323.
- [177] Pares A, Guanabens N, Alvarez L, De Osaba MJ, Oriola J, Pons F, et al. Collagen type I alpha1 and vitamin D receptor gene polymorphisms and bone mass in primary biliary cirrhosis. *Hepatology* 2001;33:554–560.
- [178] Guanabens N, Pares A, Ros I, Caballeria L, Pons F, Vidal S, et al. Severity of cholestasis and advanced histological stage but not menopausal status are the major risk factors for osteoporosis in primary biliary cirrhosis. *J Hepatol* 2005;42:573–577.
- [179] Guichelaar MM, Kendall R, Malinchoc M, Hay JE. Bone mineral density before and after OLT: long-term follow-up and predictive factors. *Liver Transpl* 2006;12:1390–1402.
- [180] Guanabens N, Cerda D, Monegal A, Pons F, Caballeria L, Peris P, et al. Low bone mass and severity of cholestasis affect fracture risk in patients with primary biliary cirrhosis. *Gastroenterology* 2010;138:2348–2356.
- [181] Angulo P, Grandison GA, Fong DG, Keach JC, Lindor KD, Bjornsson E, et al. Bone disease in patients with primary sclerosing cholangitis. *Gastroenterology* 2011;140:180–188.
- [182] Diamond T, Stiel D, Lunzer M, Wilkinson M, Roche J, Posen S. Osteoporosis and skeletal fractures in chronic liver disease. *Gut* 1990;31:82–87.
- [183] Chen CC, Wang SS, Jeng FS, Lee SD. Metabolic bone disease of liver cirrhosis: is it parallel to the clinical severity of cirrhosis? *J Gastroenterol Hepatol* 1996;11:417–421.
- [184] Monegal A, Navasa M, Guanabens N, Peris P, Pons F, Martinez de Osaba MJ, et al. Osteoporosis and bone mineral metabolism disorders in cirrhotic patients referred for orthotopic liver transplantation. *Calcif Tissue Int* 1997;60:148–154.
- [185] Ninkovic M, Skingle SJ, Bearcroft PW, Bishop N, Alexander GJ, Compston JE. Incidence of vertebral fractures in the first three months after orthotopic liver transplantation. *Eur J Gastroenterol Hepatol* 2000;12:931–935.
- [186] Carey EJ, Balan V, Kremers WK, Hay JE. Osteopenia and osteoporosis in patients with end-stage liver disease caused by hepatitis C and alcoholic liver disease: not just a cholestatic problem. *Liver Transpl* 2003;9:1166–1173.
- [187] Gonzalez-Calvin JL, Mundi JL, Casado-Caballero FJ, Abadia AC, Martin-Ibanez JJ. Bone mineral density and serum levels of soluble tumor necrosis factors, estradiol, and osteoprotegerin in postmenopausal women with cirrhosis after viral hepatitis. *J Clin Endocrinol Metab* 2009;94:4844–4850.

Clinical Practice Guidelines

- [188] Monegal A, Navasa M, Peris P, Colmenero J, Cuervo A, Muxi A, et al. Bone disease in patients awaiting liver transplantation. Has the situation improved in the last two decades? *Calcif Tissue Int* 2013;93:571–576.
- [189] Sinigaglia L, Fargion S, Fracanzani AL, Binelli L, Battafarano N, Varenna M, et al. Bone and joint involvement in genetic hemochromatosis: role of cirrhosis and iron overload. *J Rheumatol* 1997;24:1809–1813.
- [190] Guggenbuhl P, Deugnier Y, Boisdet JF, Rolland Y, Perdriger A, Pawlotsky Y, et al. Bone mineral density in men with genetic hemochromatosis and HFE gene mutation. *Osteoporos Int* 2005;16:1809–1814.
- [191] Valenti L, Varenna M, Fracanzani AL, Rossi V, Fargion S, Sinigaglia L. Association between iron overload and osteoporosis in patients with hereditary hemochromatosis. *Osteoporos Int* 2009;20:549–555.
- [192] Guanabens N, Pares A, Navasa M, Martinez de Osaba MJ, Hernandez ME, Munoz J, et al. Cyclosporin A increases the biochemical markers of bone remodeling in primary biliary cirrhosis. *J Hepatol* 1994;21:24–28.
- [193] Springer JE, Cole DE, Rubin LA, Cauch-Dudek K, Harewood L, Evrovski J, et al. Vitamin D-receptor genotypes as independent genetic predictors of decreased bone mineral density in primary biliary cirrhosis. *Gastroenterology* 2000;118:145–151.
- [194] Newton J, Francis R, Prince M, James O, Bassendine M, Rawlings D, et al. Osteoporosis in primary biliary cirrhosis revisited. *Gut* 2001;49:282–287.
- [195] Solerio E, Isaia G, Innarella R, Di Stefano M, Farina M, Borghesio E, et al. Osteoporosis: still a typical complication of primary biliary cirrhosis? *Dig Liver Dis* 2003;35:339–346.
- [196] Bonkovsky HL, Hawkins M, Steinberg K, Hersh T, Galambos JT, Henderson JM, et al. Prevalence and prediction of osteopenia in chronic liver disease. *Hepatology* 1990;12:273–280.
- [197] Ninkovic M, Love SA, Tom B, Alexander GJ, Compston JE. High prevalence of osteoporosis in patients with chronic liver disease prior to liver transplantation. *Calcif Tissue Int* 2001;69:321–326.
- [198] Sokhi RP, Anantharaju A, Kondaveeti R, Creech SD, Islam KK, Van Thiel DH. Bone mineral density among cirrhotic patients awaiting liver transplantation. *Liver Transpl* 2004;10:648–653.
- [199] Olsson R, Johansson C, Lindstedt G, Mellstrom D. Risk factors for bone loss in chronic active hepatitis and primary biliary cirrhosis. *Scand J Gastroenterol* 1994;29:753–756.
- [200] Monegal A, Navasa M, Guanabens N, Peris P, Pons F, Martinez de Osaba MJ, et al. Bone disease after liver transplantation: a long-term prospective study of bone mass changes, hormonal status and histomorphometric characteristics. *Osteoporos Int* 2001;12:484–492.
- [201] Leidig-Bruckner G, Hosch S, Doididou P, Ritschel D, Conradt C, Klose C, et al. Frequency and predictors of osteoporotic fractures after cardiac or liver transplantation: a follow-up study. *Lancet* 2001;357:342–347.
- [202] Navasa M, Monegal A, Guanabens N, Peris P, Rimola A, Munoz-Gomez J, et al. Bone fractures in liver transplant patients. *Br J Rheumatol* 1994;33:52–55.
- [203] Compston JE. Osteoporosis after liver transplantation. *Liver Transpl* 2003;9:321–330.
- [204] Pares A, Guanabens N. Treatment of bone disorders in liver disease. *J Hepatol* 2006;45:445–453.
- [205] Guanabens N, Pares A, Alvarez L, Martinez de Osaba MJ, Monegal A, Peris P, et al. Collagen-related markers of bone turnover reflect the severity of liver fibrosis in patients with primary biliary cirrhosis. *J Bone Miner Res* 1998;13:731–738.
- [206] Guanabens N, Monegal A, Muxi A, Martinez-Ferrer A, Reyes R, Caballeria J, et al. Patients with cirrhosis and ascites have false values of bone density: implications for the diagnosis of osteoporosis. *Osteoporos Int* 2012;23:1481–1487.
- [207] Guanabens N, Pares A, Monegal A, Peris P, Pons F, Alvarez L, et al. Etidronate versus fluoride for treatment of osteopenia in primary biliary cirrhosis: preliminary results after 2 years. *Gastroenterology* 1997;113:219–224.
- [208] Guanabens N, Pares A, Ros I, Alvarez L, Pons F, Caballeria L, et al. Alendronate is more effective than etidronate for increasing bone mass in osteopenic patients with primary biliary cirrhosis. *Am J Gastroenterol* 2003;98:2268–2274.
- [209] Lindor KD, Jorgensen RA, Tiegs RD, Khosla S, Dickson ER. Etidronate for osteoporosis in primary biliary cirrhosis: a randomized trial. *J Hepatol* 2000;33:878–882.
- [210] Wolfhagen FH, van Buuren HR, den Ouden JW, Hop WC, van Leeuwen JP, Schalm SW, et al. Cyclical etidronate in the prevention of bone loss in corticosteroid-treated primary biliary cirrhosis. A prospective, controlled pilot study. *J Hepatol* 1997;26:325–330.
- [211] Guanabens N, Monegal A, Cerda D, Muxi A, Gifre L, Peris P, et al. Randomized trial comparing monthly ibandronate and weekly alendronate for osteoporosis in patients with primary biliary cirrhosis. *Hepatology* 2013;58:2070–2078.
- [212] Zein CO, Jorgensen RA, Clarke B, Wenger DE, Keach JC, Angulo P, et al. Alendronate improves bone mineral density in primary biliary cirrhosis: a randomized placebo-controlled trial. *Hepatology* 2005;42:762–771.
- [213] Ninkovic M, Love S, Tom BD, Bearcroft PW, Alexander GJ, Compston JE. Lack of effect of intravenous pamidronate on fracture incidence and bone mineral density after orthotopic liver transplantation. *J Hepatol* 2002;37:93–100.
- [214] Monegal A, Guanabens N, Suarez MJ, Suarez F, Clemente G, Garcia-Gonzalez M, et al. Pamidronate in the prevention of bone loss after liver transplantation: a randomized controlled trial. *Transpl Int* 2009;22:198–206.
- [215] Millionig G, Graziadei IW, Eichler D, Pfeiffer KP, Finkenstedt G, Muehlechner P, et al. Alendronate in combination with calcium and vitamin D prevents bone loss after orthotopic liver transplantation: a prospective single-center study. *Liver Transpl* 2005;11:960–966.
- [216] Crawford BA, Kam C, Pavlovic J, Byth K, Handelsman DJ, Angus PW, et al. Zoledronic acid prevents bone loss after liver transplantation: a randomized, double-blind, placebo-controlled trial. *Ann Intern Med* 2006;144:239–248.
- [217] Atamaz F, Hepgul S, Akyildiz M, Karasu Z, Kilic M. Effects of alendronate on bone mineral density and bone metabolic markers in patients with liver transplantation. *Osteoporos Int* 2006;17:942–949.
- [218] Olsson R, Mattsson LA, Obrant K, Mellstrom D. Estrogen-progestogen therapy for low bone mineral density in primary biliary cirrhosis. *Liver* 1999;19:188–192.
- [219] Pereira SP, O'Donohue J, Moniz C, Phillips MG, Abraha H, Buxton-Thomas M, et al. Transdermal hormone replacement therapy improves vertebral bone density in primary biliary cirrhosis: results of a 1-year controlled trial. *Aliment Pharmacol Ther* 2004;19:563–570.
- [220] Ormardsdottir S, Mallmin H, Naessen T, Petren-Mallmin M, Broome U, Hultcrantz R, et al. An open, randomized, controlled study of transdermal hormone replacement therapy on the rate of bone loss in primary biliary cirrhosis. *J Intern Med* 2004;256:63–69.
- [221] Isoniemi H, Appelberg J, Nilsson CG, Makela P, Risteli J, Hockerstedt K. Transdermal oestrogen therapy protects postmenopausal liver transplant women from osteoporosis. A 2-year follow-up study. *J Hepatol* 2001;34:299–305.
- [222] Diamond T, Stiel D, Posen S. Effects of testosterone and venesection on spinal and peripheral bone mineral in six hypogonadal men with hemochromatosis. *J Bone Miner Res* 1991;6:39–43.
- [223] Dresner-Pollak R, Gabet Y, Steimatzyk A, Hamdani G, Bab I, Ackerman Z, et al. Human parathyroid hormone 1–34 prevents bone loss in experimental biliary cirrhosis in rats. *Gastroenterology* 2008;134:259–267.
- [224] Keeffe EB, Gettys C, Esquivel CO. Liver transplantation in patients with severe obesity. *Transplantation* 1994;57:309–311.
- [225] Sawyer RG, Pelletier SJ, Prueett TL. Increased early morbidity and mortality with acceptable long-term function in severely obese patients undergoing liver transplantation. *Clin Transplant* 1999;13:126–130.
- [226] Nair S, Verma S, Thuluvath PJ. Obesity and its effect on survival in patients undergoing orthotopic liver transplantation in the United States. *Hepatology* 2002;35:105–109.
- [227] Dick AA, Spitzer AL, Seifert CF, Deckert A, Carithers RL, Reyes JD, et al. Liver transplantation at the extremes of the body mass index. *Liver Transpl* 2009;15:968–977.
- [228] Leonard J, Heimbach J, Malinchoc M, Watt K, Charlton M. The impact of obesity on long-term outcomes in liver transplant recipients—results of the NIDDK liver transplant database. *Am J Transplant* 2008;8:667–672.
- [229] Pikul J, Sharpe MD, Lowndes R, Ghent CN. Degree of preoperative malnutrition is predictive of postoperative morbidity and mortality in liver transplant recipients. *Transplantation* 1994;57:469–472.
- [230] Harrison J, McKiernan J, Neuberger JM. A prospective study on the effect of recipient nutritional status on outcome in liver transplantation. *Transpl Int* 1997;10:369–374.
- [231] Selberg O, Bottcher J, Tusch G, Pichlmayr R, Henkel E, Muller M-J. Identification of high- and low-risk patients before liver transplantation: a prospective cohort study of nutritional and metabolic parameters in 150 patients. *Hepatology* 1997;25:652–657.
- [232] Tandon P, Ney M, Irwin I, Ma MM, Gramlich L, Bain VG, et al. Severe muscle depletion in patients on the liver transplant wait list: its

- prevalence and independent prognostic value. *Liver Transpl* 2012;18:1209–1216.
- [233] Montano-Loza AJ, Meza-Junco J, Prado CM, Lieffers JR, Baracos VE, Bain VG, Sawyer MB. Muscle wasting is associated with mortality in patients with cirrhosis. *Clin Gastroenterol Hepatol* 2012;10:166–173, e161.
- [234] DiMartini A, Cruz RJ, Dew MA, Myaskovsky L, Goodpaster B, Fox K, et al. Muscle mass predicts outcomes following liver transplantation. *Liver Transpl* 2013;19:1172–1180.
- [235] Durand F, Buyse S, Francoz C, Laouenan C, Bruno O, Belghiti J, et al. Prognostic value of muscle atrophy in cirrhosis using psoas muscle thickness on computed tomography. *J Hepatol* 2014;60:1151–1157.
- [236] Yadav A, Chang YH, Carpenter S, Silva AC, Rakela J, Aqel BA, et al. Relationship between sarcopenia, six-minute walk distance and health-related quality of life in liver transplant candidates. *Clin Transplant* 2015;29:134–141.
- [237] Wang CW, Feng S, Covinsky KE, Hayssen H, Zhou L-Q, Yeh BM, et al. A comparison of muscle function, mass, and quality in liver transplant candidates: results from the functional assessment in liver transplantation study. *Transplantation* 2016;100:1692–1698.
- [238] Dunn MA, Josbeno DA, Schmotzer AR, Tevar AD, DiMartini AF, Landsittel DP, et al. The gap between clinically assessed physical performance and objective physical activity in liver transplant candidates. *Liver Transpl* 2016;22:1324–1332.
- [239] Lai JC, Volk ML, Strasburg D, Alexander N. Performance-based measures associate with frailty in patients with end-stage liver disease. *Transplantation* 2016;100:2656–2660.
- [240] Kalafateli M, Mantzoukis K, Choi Yau Y, Mohammad AO, Arora S, Rodrigues S, et al. Malnutrition and sarcopenia predict post-liver transplantation outcomes independently of the Model for End-stage Liver Disease score. *J Cachexia Sarcopenia Muscle* 2017;8:113–121.
- [241] Sinclair M, Poltavskiy E, Dodge JL, Lai JC. Frailty is independently associated with increased hospitalisation days in patients on the liver transplant waitlist. *World J Gastroenterol* 2017;23:899–905.
- [242] Ferreira LG, Ferreira Martins AI, Cunha CE, Anastacio LR, Lima AS, Correia MI. Negative energy balance secondary to inadequate dietary intake of patients on the waiting list for liver transplantation. *Nutrition* 2013;29:1252–1258.
- [243] Ney M, Abraldes JG, Ma M, Belland D, Harvey A, Robbins S, et al. Insufficient protein intake is associated with increased mortality in 630 patients with cirrhosis awaiting liver transplantation. *Nutr Clin Pract* 2015;30:530–536.
- [244] Le Cornu KA, McKiernan FJ, Kapadia SA, Neuberger JM. A prospective randomized study of preoperative nutritional supplementation in patients awaiting elective orthotopic liver transplantation. *Transplantation* 2000;69:1364–1369.
- [245] Plank LD, McCall JL, Gane EJ, Rafique M, Gillanders LK, McIlroy K, et al. Pre- and postoperative immunonutrition in patients undergoing liver transplantation: a pilot study of safety and efficacy. *Clin Nutr* 2005;24:288–296.
- [246] Plank LD, Mathur S, Gane EJ, Peng SL, Gillanders LK, McIlroy K, et al. Perioperative immunonutrition in patients undergoing liver transplantation: a randomized double-blind trial. *Hepatology* 2015;61:639–647.
- [247] Lei Q, Wang X, Zheng H, Bi J, Tan S, Li N. Peri-operative immunonutrition in patients undergoing liver transplantation: a meta-analysis of randomized controlled trials. *Asia Pac J Clin Nutr* 2015;24:583–590.
- [248] Kaido T, Mori A, Ogura Y, Hata K, Yoshizawa A, Iida T, et al. Impact of enteral nutrition using a new immuno-modulating diet after liver transplantation. *Hepatogastroenterology* 2010;57:1522–1525.
- [249] Hanai T, Shiraki M, Nishimura K, Ohnishi S, Imai K, Suetsugu A, et al. Sarcopenia impairs prognosis of patients with liver cirrhosis. *Nutrition* 2015;31:193–199.
- [250] Garrison RN, Cryer HM, Howard DA, Polk Jr H. Clarification of risk factors for abdominal operations in patients with hepatic cirrhosis. *Ann Surg* 1984;199:648.
- [251] Merli M, Nicolini G, Angeloni S, Riggio O. Malnutrition is a risk factor in cirrhotic patients undergoing surgery. *Nutrition* 2002;18:978–986.
- [252] Swart G, Van den Berg J, Van Vuure J, Rietveld T, Wattimena D, Frenkel M. Minimum protein requirements in liver cirrhosis determined by nitrogen balance measurements at three levels of protein intake. *Clinical Nutrition* 1989;8:329–336.
- [253] Zillikens M, Van den Berg J, Wattimena J, Rietveld T, Swart G. Nocturnal oral glucose supplementation: the effects on protein metabolism in cirrhotic patients and in healthy controls. *J Hepatol* 1993;17:377–383.
- [254] Coolsen MM, Wong-Lun-Hing EM, Dam RM, Wilt AA, Slim K, Lassen K, et al. A systematic review of outcomes in patients undergoing liver surgery in an enhanced recovery after surgery pathways. *HPB* 2013;15:245–251.
- [255] Hughes MJ, McNally S, Wigmore SJ. Enhanced recovery following liver surgery: a systematic review and meta-analysis. *HPB* 2014;16:699–706.
- [256] Weimann A, Braga M, Carli F, Higashiguchi T, Hübner M, Klek S, et al. ESPEN enteral nutrition guideline: Clinical nutrition in surgery. *Clinical nutrition* 2017;36:623–650.
- [257] Reilly J, Mehta R, Teperman L, Cemaj S, Tzakis A, Yanaga K, et al. Nutritional support after liver transplantation: a randomized prospective study. *J Parenter Enteral Nutr* 1990;14:386–391.
- [258] Hasse JM, Blue LS, Liepa GU, Goldstein RM, Jennings LW, Mor E, et al. Early enteral nutrition support in patients undergoing liver transplantation. *J Parenter Enteral Nutr* 1995;19:437–443.
- [259] Wicks C, Routley D, Williams R, Somasundaram S, Bjarnason I, Potter D, et al. Comparison of enteral feeding and total parenteral nutrition after liver transplantation. *The Lancet* 1994;344:837–840.
- [260] Rayes N, Seehofer D, Hansen S, Boucsein K, Muller AR, Serke S, et al. Early enteral supply of lactobacillus and fiber versus selective bowel decontamination: a controlled trial in liver transplant recipients. *Transplantation* 2002;74:123–127.
- [261] Pescovitz MD, Mehta PL, Leapman SB, Milgrom ML, Jindal RM, Filo RS. Tube jejunostomy in liver transplant recipients. *Surgery* 1995;117:642–647.
- [262] Mehta PL, Alaka KJ, Filo RS, Leapman SB, Milgrom ML, Pescovitz MD. Nutrition support following liver transplantation: comparison of jejunal versus parenteral routes. *Clin Transplant* 1995;9:364–369.
- [263] Hu Q-G, Zheng Q-C. The influence of enteral nutrition in postoperative patients with poor liver function. *World J Gastroenterol* 2003;9:843.
- [264] Plank LD, Metzger DJ, McCall JL, Barclay KL, Gane EJ, Streat SJ, et al. Sequential changes in the metabolic response to orthotopic liver transplantation during the first year after surgery. *Ann Surg* 2001;234:245.
- [265] Weijs PJ, Cynober L, DeLegge M, Kreymann G, Wernerman J, Wolfe RR. Proteins and amino acids are fundamental to optimal nutrition support in critically ill patients. *Crit Care* 2014;18:591.
- [266] McClave SA, DiBaise JK, Mullin GE, Martindale RG. ACG Clinical Guideline: nutrition therapy in the adult hospitalized patient. *Am J Gastroenterol* 2016;111:315–334, quiz 335.
- [267] McClave SA, Taylor BE, Martindale RG, Warren MM, Johnson DR, Braunschweig C, et al. Guidelines for the provision and assessment of nutrition support therapy in the adult critically ill patient: Society of Critical Care Medicine (SCCM) and American Society for Parenteral and Enteral Nutrition (A.S.P.E.N.). *JPEN J Parenter Enteral Nutr* 2016;40:159–211.
- [268] Kyoung K-H, Lee S-G, Nam CW, Nah YW. Beneficial effect of low caloric intake in the early period after orthotopic liver transplantation: a new concept using graft weight. *Hepatogastroenterology* 2014;61:1668–1672.
- [269] Marik PE. Is early starvation beneficial for the critically ill patient? *Curr Opin Clin Nutr Metab Care* 2016;19:155–160.
- [270] Zhu X, Wu Y, Qiu Y, Jiang C, Ding Y. Effects of omega-3 fish oil lipid emulsion combined with parenteral nutrition on patients undergoing liver transplantation. *JPEN J Parenter Enteral Nutr* 2013;37:68–74.
- [271] Zhu XH, Wu YF, Qiu YD, Jiang CP, Ding YT. Liver-protecting effects of omega-3 fish oil lipid emulsion in liver transplantation. *World J Gastroenterol* 2012;18:6141–6147.
- [272] Kuse ER, Kotzerke J, Müller S, Nashan B, Lück R, Jaeger K. Hepatic microendothelial function during parenteral nutrition including an MCT/LCT or LCT emulsion after liver transplantation—a double-blind study. *Transpl Int* 2002;15:272–277.
- [273] McClave SA, Kushner R, Van Way 3rd CW, Cave M, DeLegge M, DiBaise J, et al. Nutrition therapy of the severely obese, critically ill patient: summation of conclusions and recommendations. *JPEN J Parenter Enteral Nutr* 2011;35:88S–96S.
- [274] Lundbom N, Laurila O, Laurila S. Central pontine myelinolysis after correction of chronic hyponatremia. *Lancet* 1993;342:247–248.
- [275] Mcdiarmid SV, John O Colonna I, Shaked A, Ament ME, Busuttill RW. A comparison of renal function in cyclosporine-and FK-506-treated patients after primary orthotopic liver transplantation. *Transplantation* 1993;56:847–853.
- [276] Murray M, Grogan TA, Lever J, Warty VS, Fung J, Venkataramanan R. Comparison of tacrolimus absorption in transplant patients receiving continuous versus interrupted enteral nutritional feeding. *Ann Pharmacother* 1998;32:633–636.

Clinical Practice Guidelines

- [277] Richards J, Gunson B, Johnson J, Neuberger J. Weight gain and obesity after liver transplantation. *Transpl Int* 2005;18:461–466.
- [278] Laryea M, Watt KD, Molinari M, Walsh MJ, McAlister VC, Marotta PJ, et al. Metabolic syndrome in liver transplant recipients: prevalence and association with major vascular events. *Liver Transpl* 2007;13:1109–1114.
- [279] Bianchi G, Marchesini G, Marzocchi R, Pinna AD, Zoli M. Metabolic syndrome in liver transplantation: relation to etiology and immunosuppression. *Liver Transpl* 2008;14:1648–1654.
- [280] Schutz T, Hudjetz H, Roske AE, Katzorke C, Kreymann G, Budde K, et al. Weight gain in long-term survivors of kidney or liver transplantation—another paradigm of sarcopenic obesity? *Nutrition* 2012;28:378–383.
- [281] Krasnoff JB, Vintro AQ, Ascher NL, Bass NM, Dodd MJ, Painter PL. Objective measures of health-related quality of life over 24 months post-liver transplantation. *Clin Transplant* 2005;19:1–9.
- [282] Krasnoff JB, Vintro AQ, Ascher NL, Bass NM, Paul SM, Dodd MJ, et al. A randomized trial of exercise and dietary counseling after liver transplantation. *Am J Transplant* 2006;6:1896–1905.
- [283] Roman E, Torrades MT, Nadal MJ, Cardenas G, Nieto JC, Vidal S, et al. Randomized pilot study: effects of an exercise programme and leucine supplementation in patients with cirrhosis. *Dig Dis Sci* 2014;59:1966–1975.
- [284] Harimoto N, Shirabe K, Yamashita YI, Ikegami T, Yoshizumi T, Soejima Y, et al. Sarcopenia as a predictor of prognosis in patients following hepatectomy for hepatocellular carcinoma. *Br J Surg* 2013;100:1523–1530.
- [285] Voron T, Tselikas L, Pietrasz D, Pigneur F, Laurent A, Compagnon P, et al. Sarcopenia impacts on short- and long-term results of hepatectomy for hepatocellular carcinoma. *Ann Surg* 2015;261:1173–1183.
- [286] Kanematsu T, Koyanagi N, Matsumata T, Kitano S, Takenaka K, Sugimachi K. Lack of preventive effect of branched-chain amino acid solution on postoperative hepatic encephalopathy in patients with cirrhosis: a randomized, prospective trial. *Surgery* 1988;104:482–488.
- [287] Tang ZF, Ling YB, Lin N, Hao Z, Xu RY. Glutamine and recombinant human growth hormone protect intestinal barrier function following portal hypertension surgery. *World J Gastroenterol* 2007;13:2223–2228.
- [288] Addolorato G, Capristo E, Greco AV, Caputo F, Stefanini GF, Gasbarrini G. Three months of abstinence from alcohol normalizes energy expenditure and substrate oxidation in alcoholics: a longitudinal study. *Am J Gastroenterol* 1998;93:2476–2481.
- [289] Levine JA, Harris MM, Morgan MY. Energy expenditure in chronic alcohol abuse. *Eur J Clin Invest* 2000;30:779–786.
- [290] Nasrallah SM, Galambos JT. Aminoacid therapy of alcoholic hepatitis. *Lancet* 1980;2:1276–1277.
- [291] Morgan TR, Moritz TE, Mendenhall CL, Haas R. Protein consumption and hepatic encephalopathy in alcoholic hepatitis. VA Cooperative Study Group #275. *J Am Coll Nutr* 1995;14:152–158.
- [292] Cabre E, Rodriguez-Iglesias P, Caballeria J, Quer JC, Sanchez-Lombrana JL, Pares A, et al. Short- and long-term outcome of severe alcohol-induced hepatitis treated with steroids or enteral nutrition: a multicenter randomized trial. *Hepatology* 2000;32:36–42.
- [293] Moreno C, Deltenre P, Senterre C, Louvet A, Gustot T, Bastens B, et al. Intensive enteral nutrition is ineffective for patients with severe alcoholic hepatitis treated with corticosteroids. *Gastroenterology* 2016;150:e908.
- [294] Zacharias T, Ferreira N, Carin AJ. Preoperative immunonutrition in liver resection—a propensity score matched case-control analysis. *Eur J Clin Nutr* 2014;68:964–969.
- [295] Badalamenti S, Salerno F, Salmeron JM, Lorenzano E, Rimola A, Gines P, et al. Lack of renal effects of fish oil administration in patients with advanced cirrhosis and impaired glomerular filtration. *Hepatology* 1997;25:313–316.
- [296] de Ledinghen V, Beau P, Mannant PR, Borderie C, Ripault MP, Silvain C, et al. Early feeding or enteral nutrition in patients with cirrhosis after bleeding from esophageal varices? A randomized controlled study. *Dig Dis Sci* 1997;42:536–541.
- [297] Hebuterne X, Vanbiervliet G. Feeding the patients with upper gastrointestinal bleeding. *Curr Opin Clin Nutr Metab Care* 2011;14:197–201.
- [298] McClave SA, Chang WK. When to feed the patient with gastrointestinal bleeding. *Nutr Clin Pract* 2005;20:544–550.