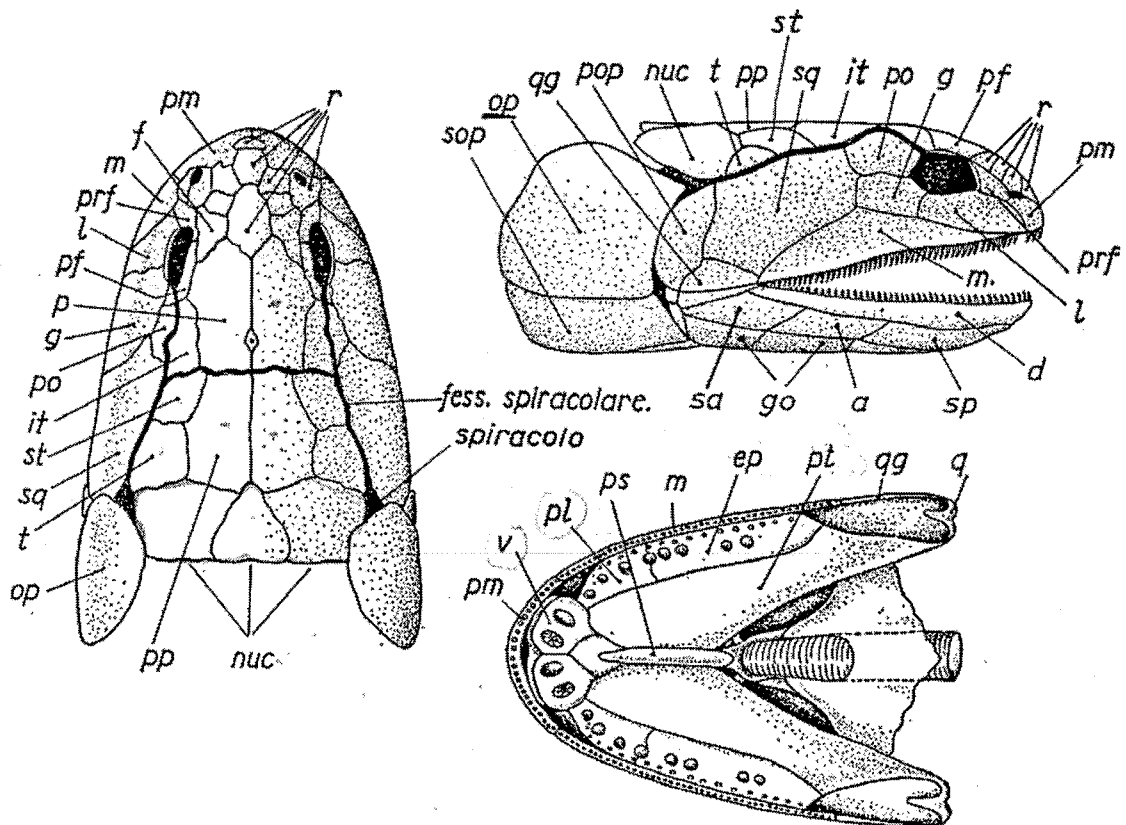
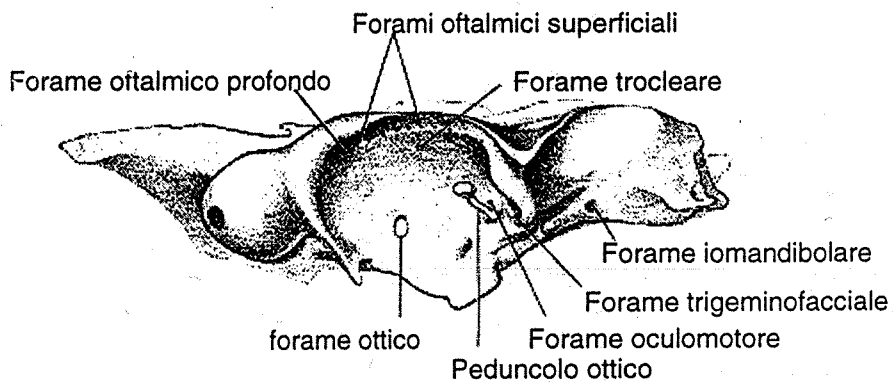
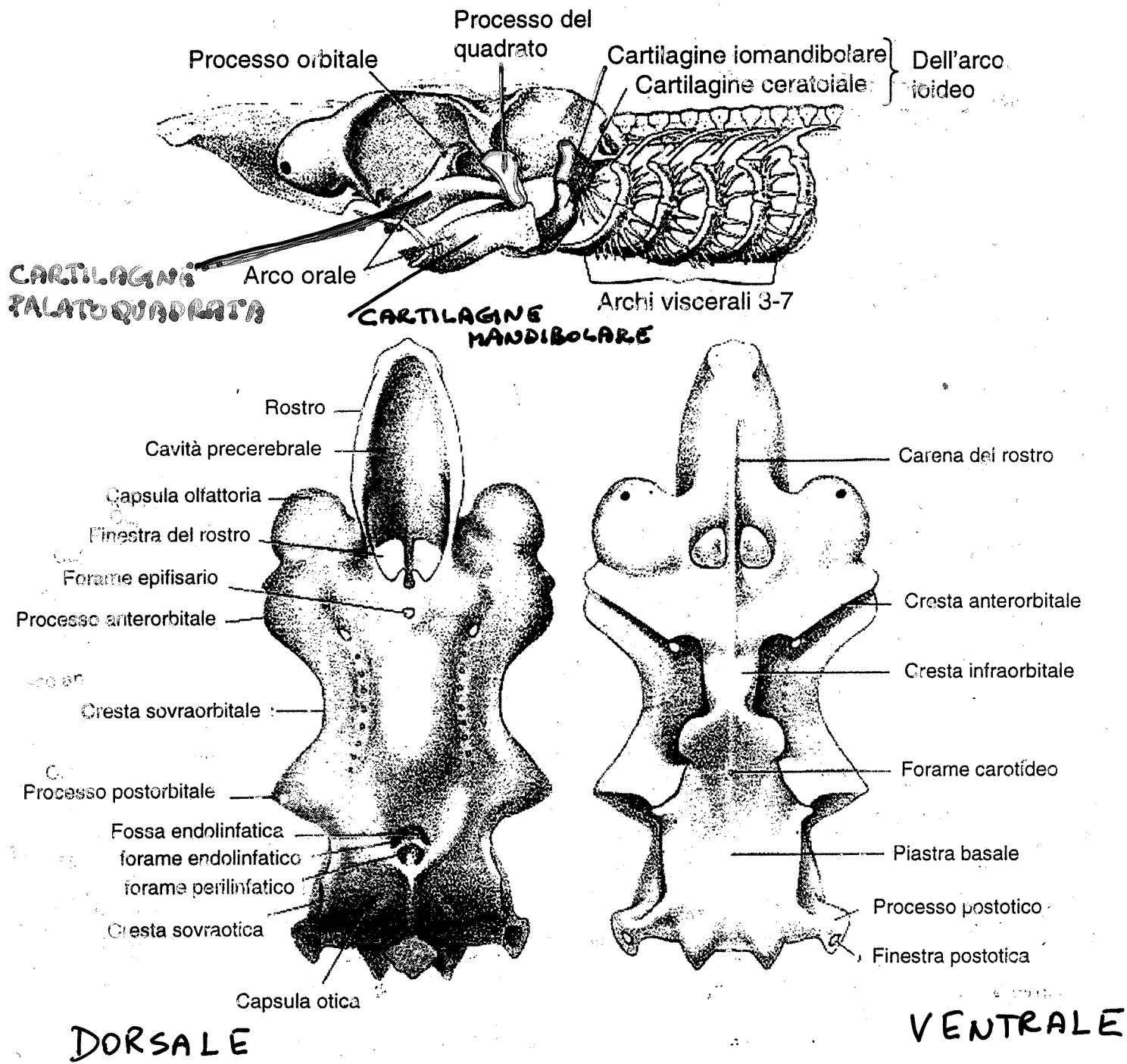


# Guida alle tavole anatomiche dei crani dei vertebrati

## Corso di Anatomia Comparata

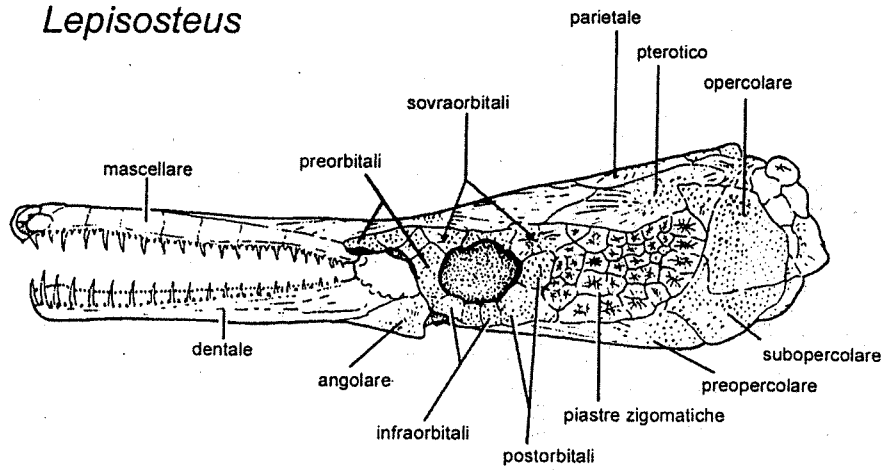


# Condritti - Squalus

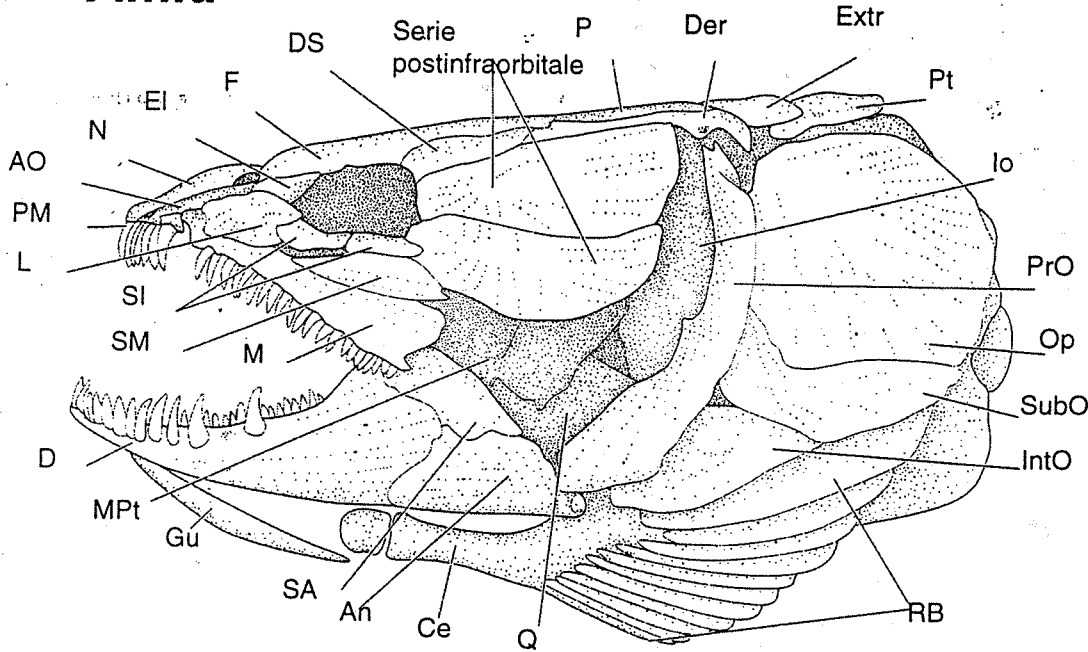


# OSTEITTI

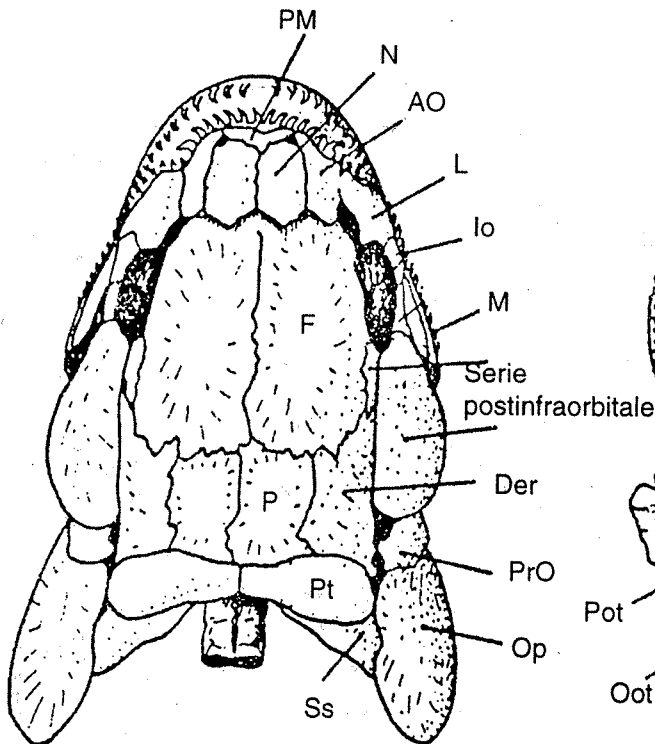
## Lepisosteus



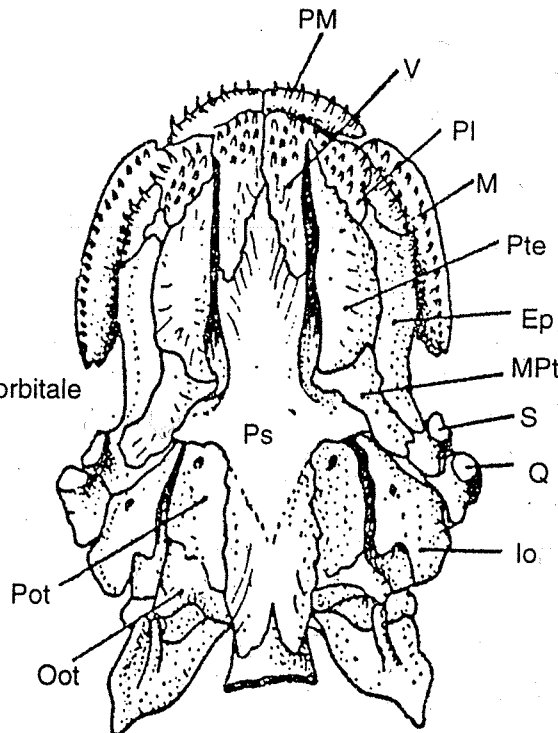
## Amia



- An - angolare
- AO - anterorbitale
- Ce - ceratoiale
- D - dentale
- Der - dermopterotico
- DS - dermosfenotico
- EI - etmoide laterale
- Ep - ectopterigoideo
- Ext - extrascapolare
- F - frontale
- Gu - gulare
- IntO - interopercolare
- lo - iomandibolare
- L - lacrimale
- M - mascellare
- MPT - metapterigoide
- N - nasale
- PI - palatino
- PM - premascellare
- Oot - opistotico
- Op - opercolare
- P - parietale
- Pf - postfrontale
- Pot - prootico
- PrO - preopercolare
- Ps - parasfenoide
- Pt - posttemporale
- Pte - perigoideo
- Q - quadrato
- Rb - raggi branchiostegi
- S - squamoso
- Sa - sovrangolare
- SI - subinfraorbitale
- SM - sovrasmassellare
- SubO - subopercolare
- Ss - sovrascapolare
- V - vomere



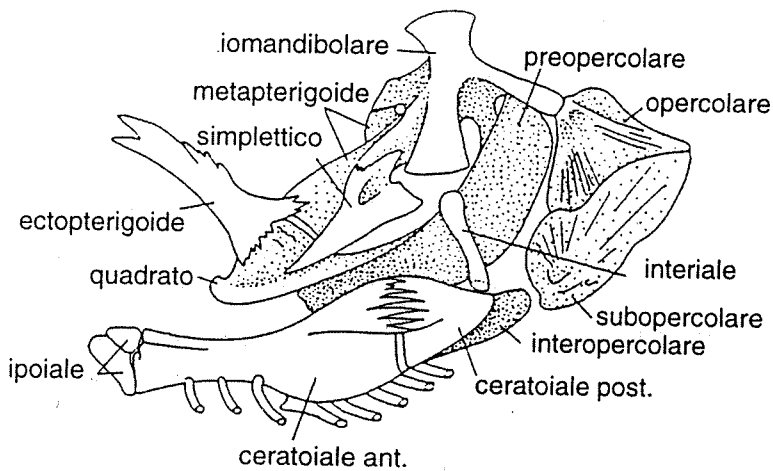
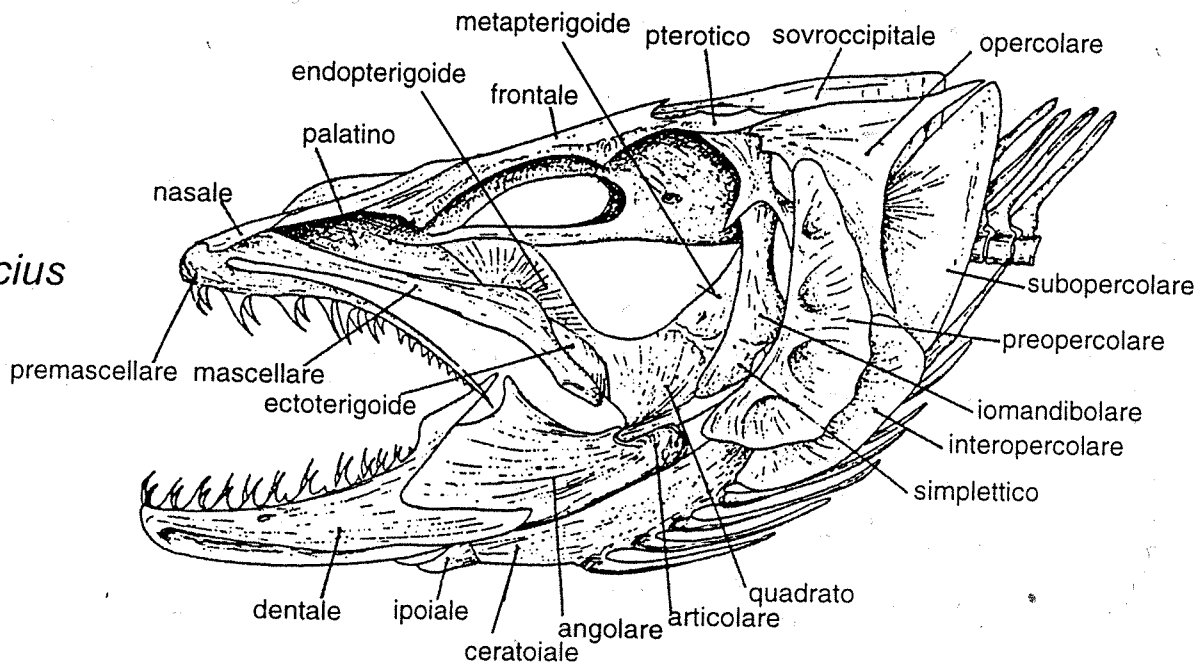
VISIONE DORSALE



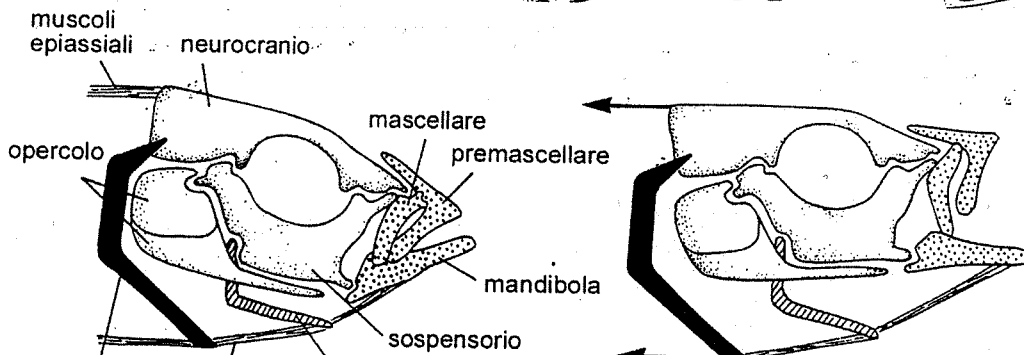
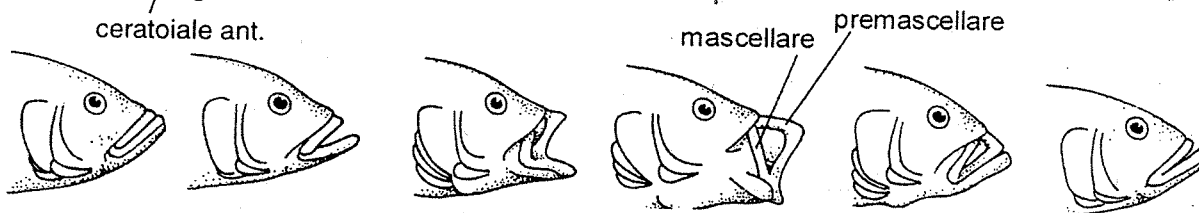
VISIONE PALATALE

# Teleostei

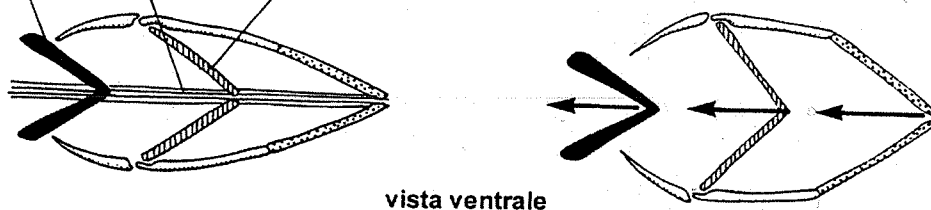
*Merluccius*



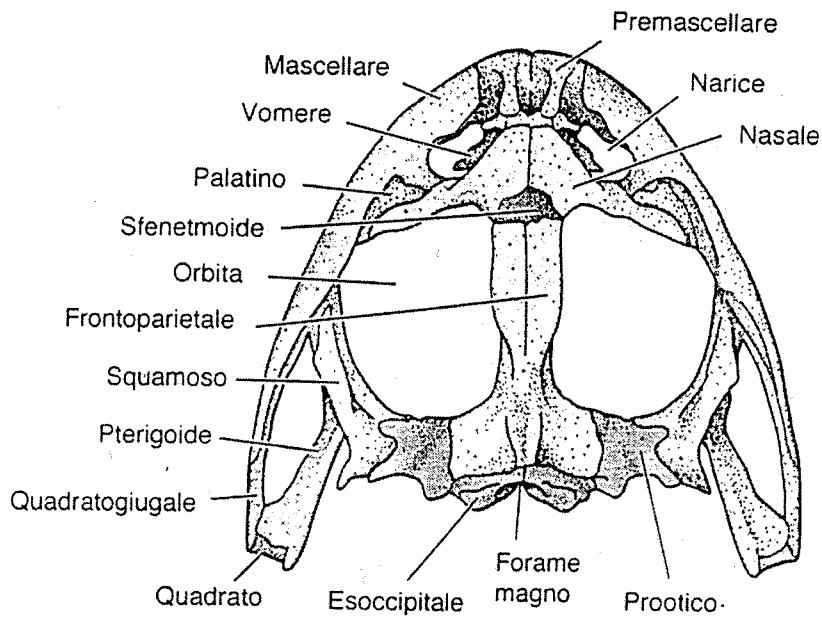
sospensorio



cinto pettorale muscoli iobranchiali apparato ioideo vista laterale

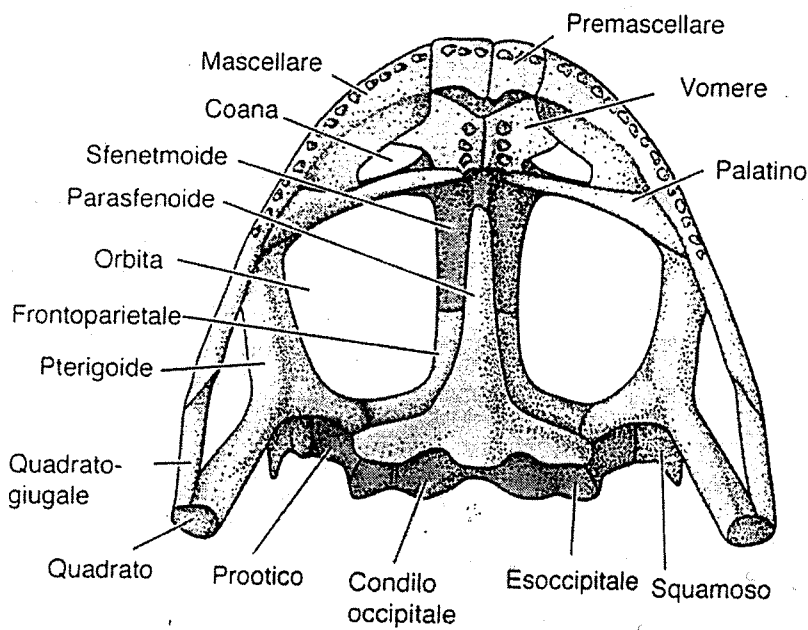


# Anfibi - Rana

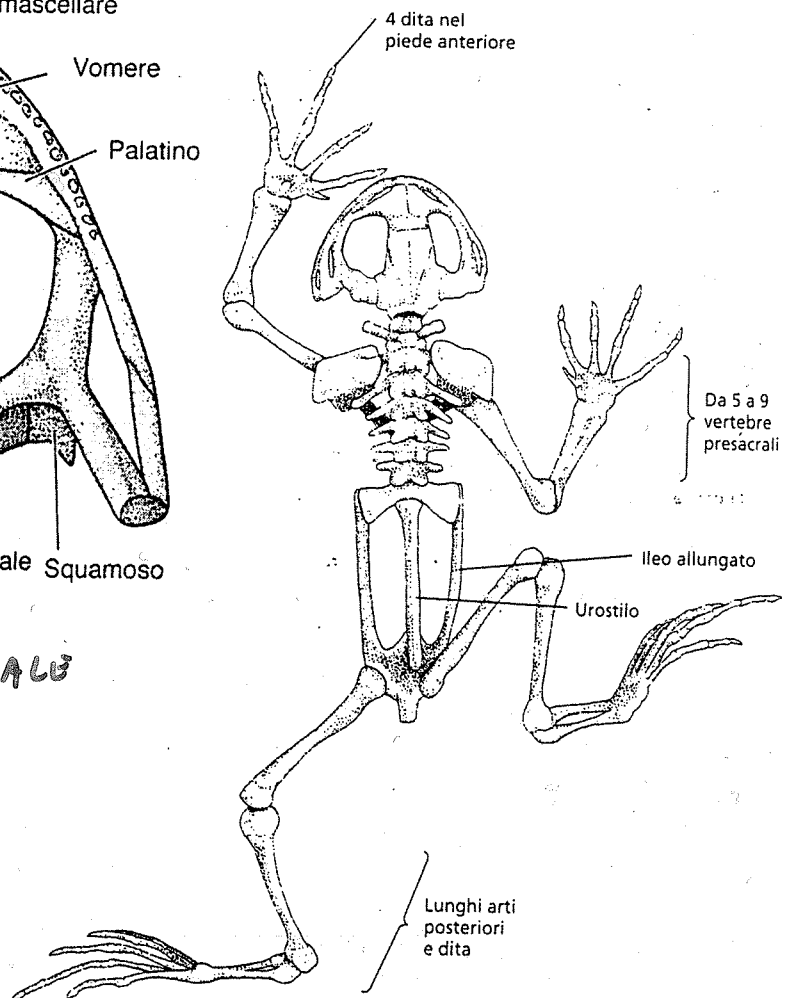


**CRANIO  
PLATIBASICO**

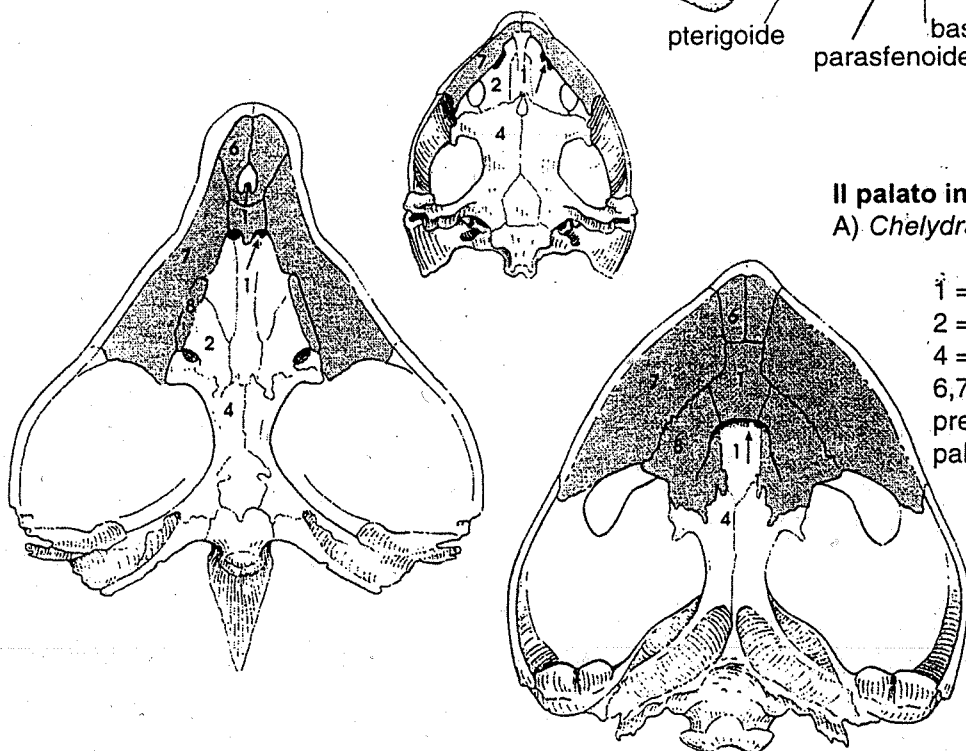
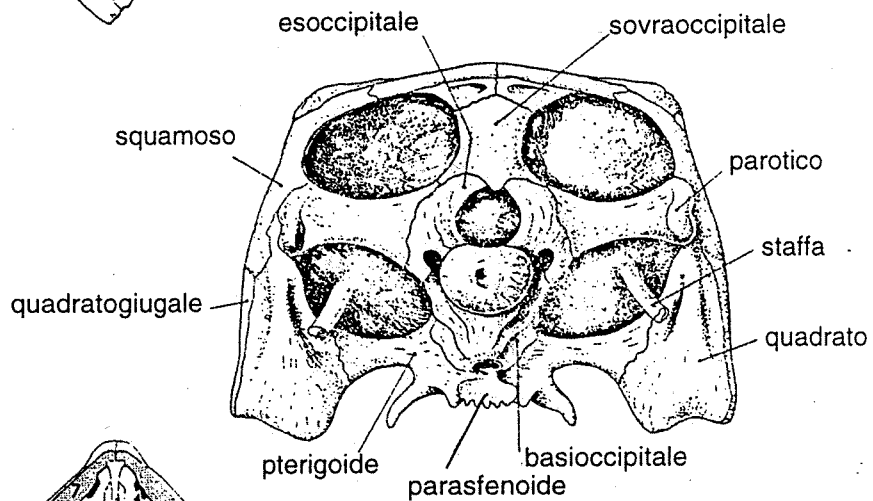
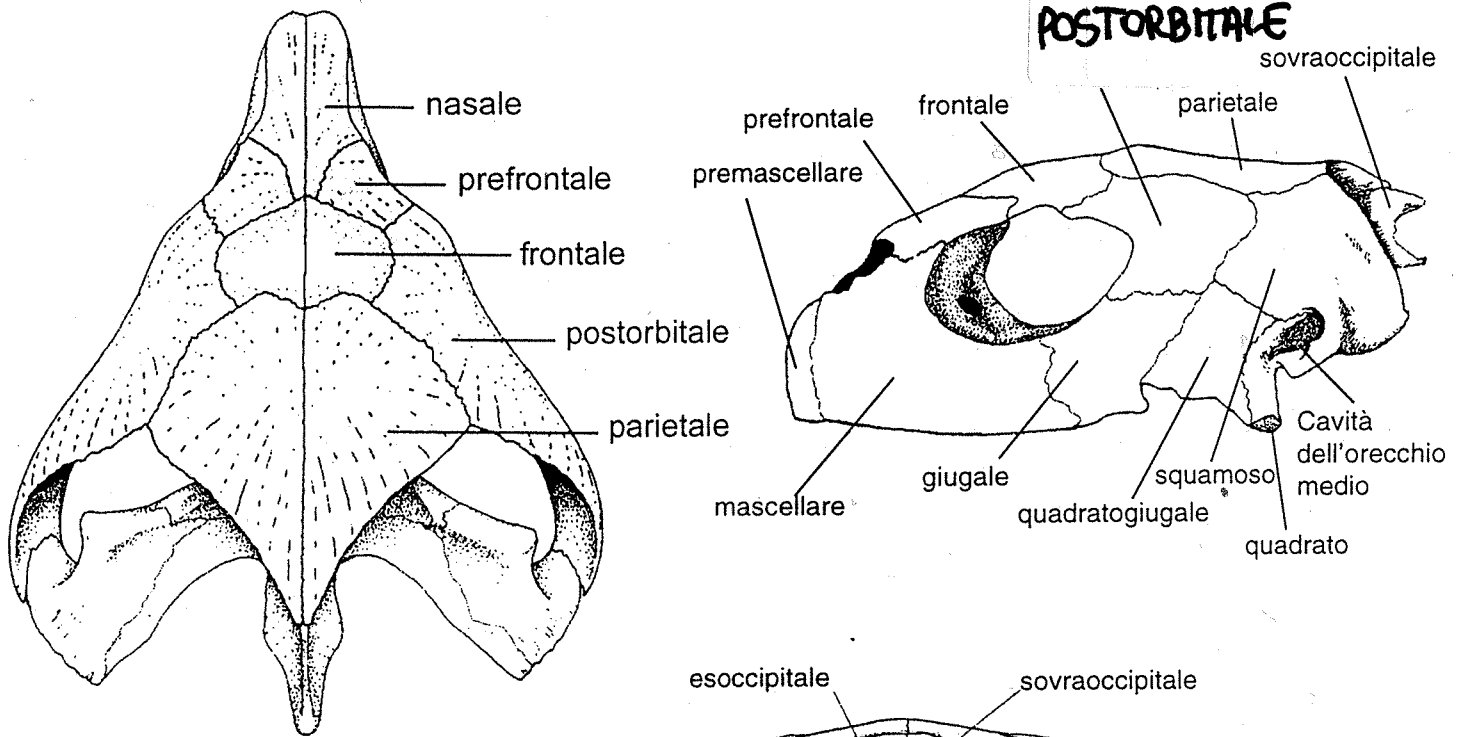
**VISIONE DORSALE**



**VISIONE PALATALE**



# cheloni

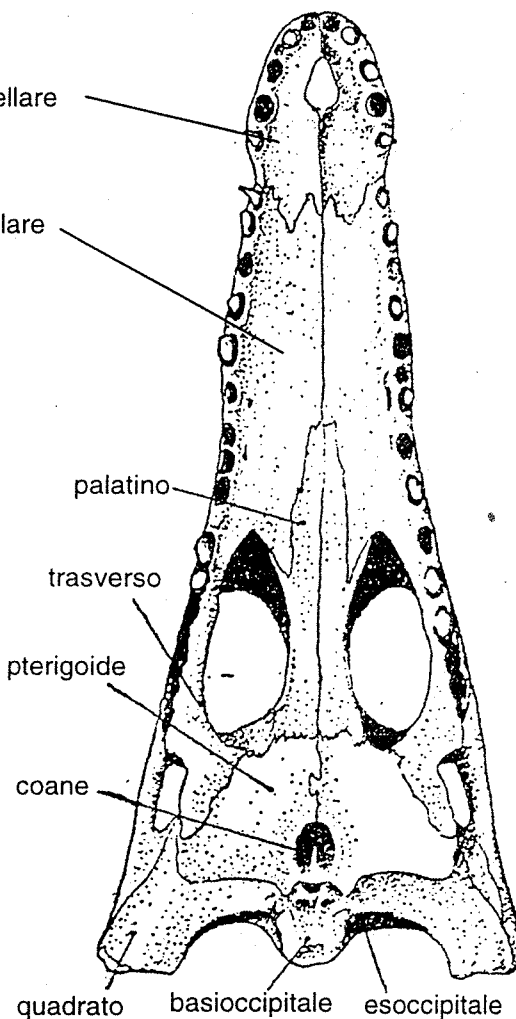
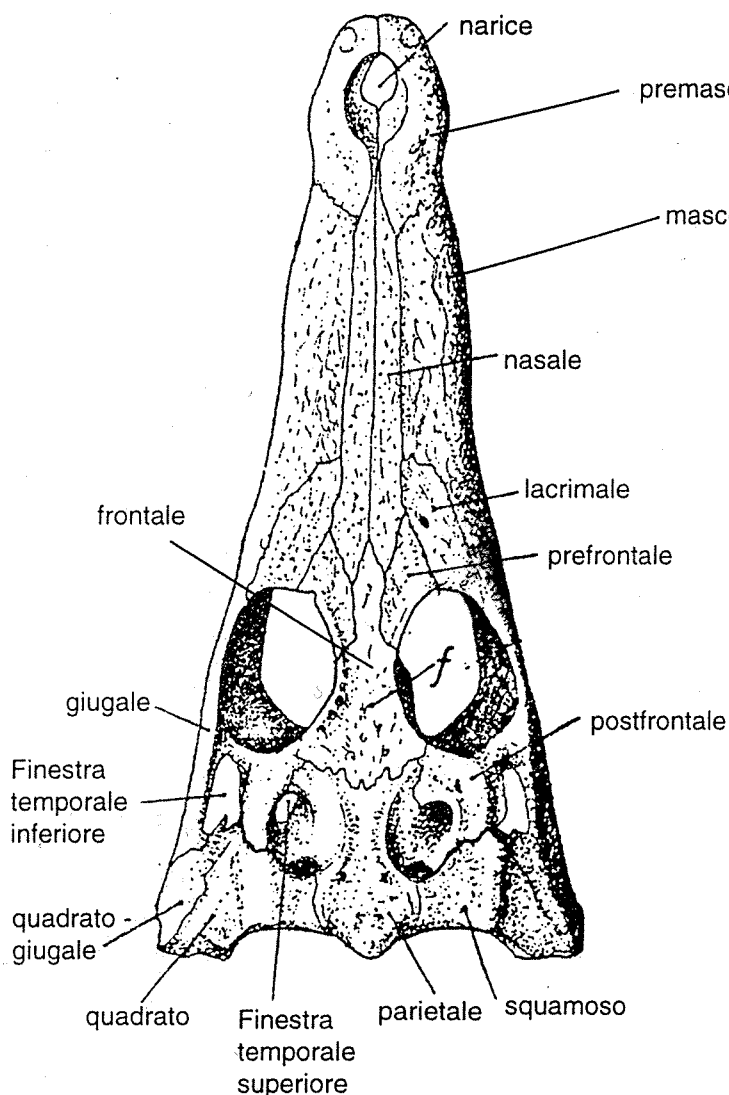


**Il palato in differenti specie di cheloni:**  
 A) *Chelydra*, B) *Macrochelys*, C) *Lepidochelys*.

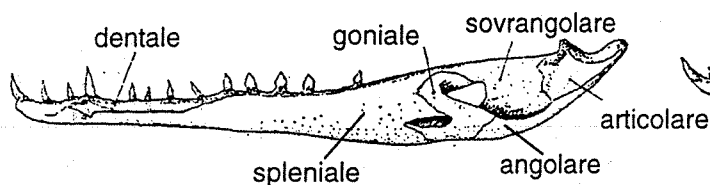
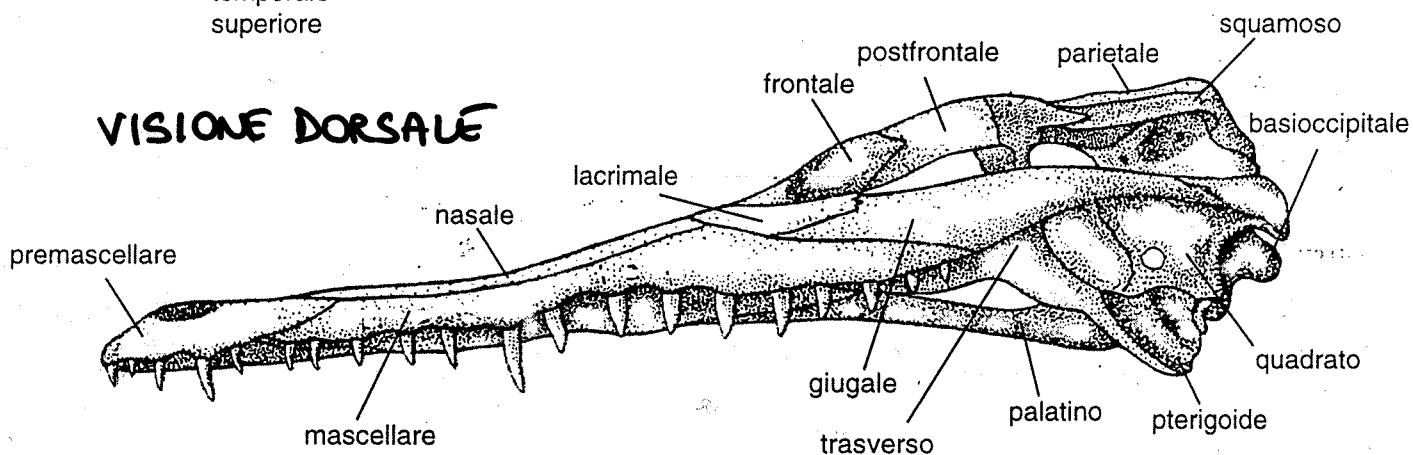
- 1 = vomere
- 2 = palatino
- 4 = pterigoideo
- 6,7,8 = processi palatini del premascellare, mascellare e palatino

# Loricati - *Crocodylus*

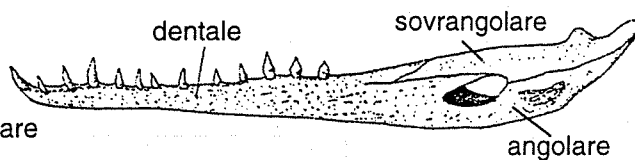
VISIONE PALATALE



VISIONE DORSALE



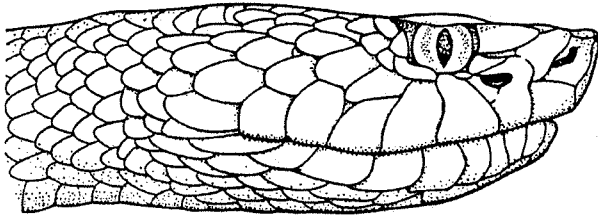
Lato linguale



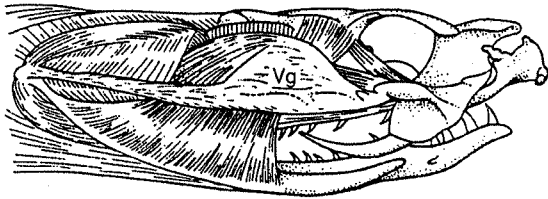
Lato labiale

# Lepidosauri - ofidi

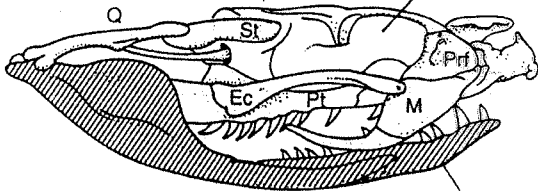
## CRANIO CINGETICO



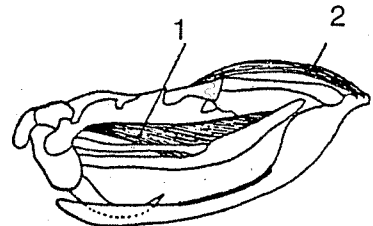
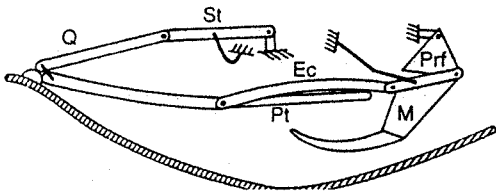
- Vg - ghiandola del veleno
- Q - quadrato
- St - sovratemporale
- Ec - ectopteroideo
- Pt - pterigoideo
- Prf - prefrontale
- M - mascellare



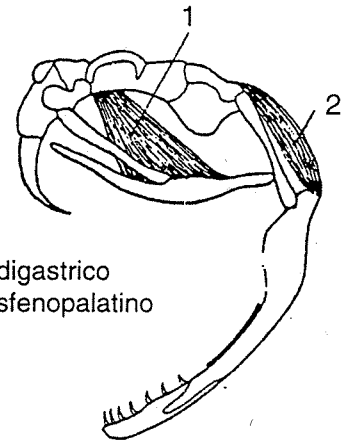
neurocranio



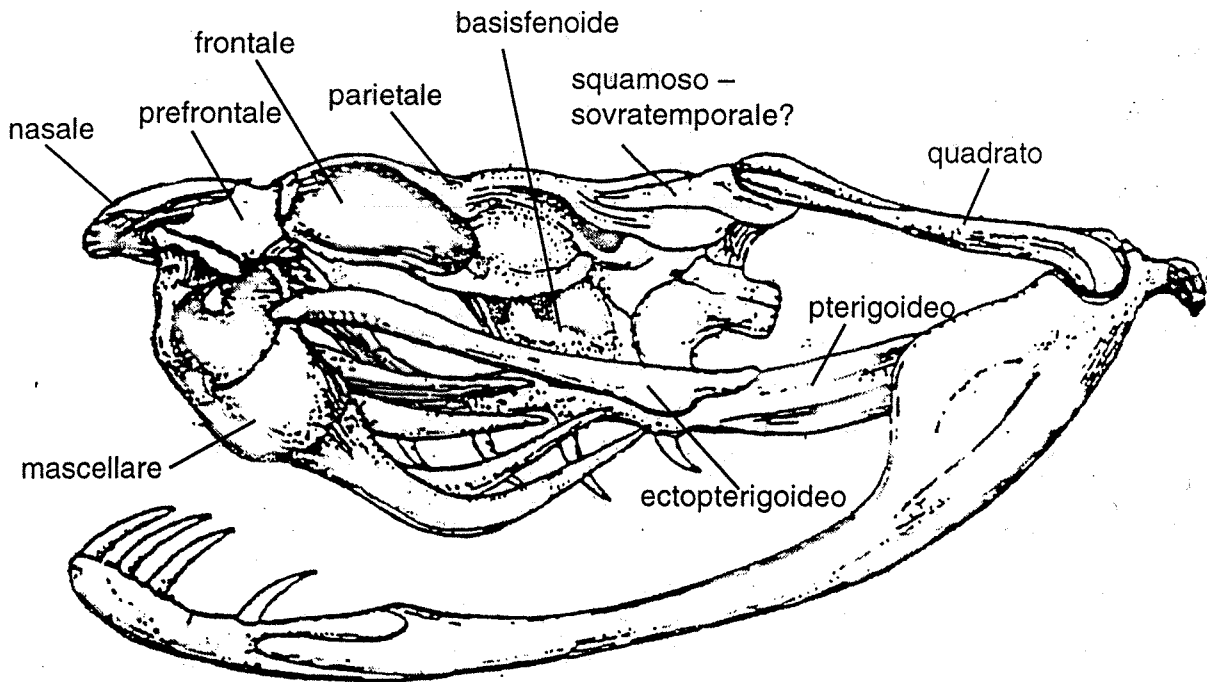
mandibola inf.



Viperidi



- 1 - muscolo digastrico
- 2 - muscolo sfenopalatino

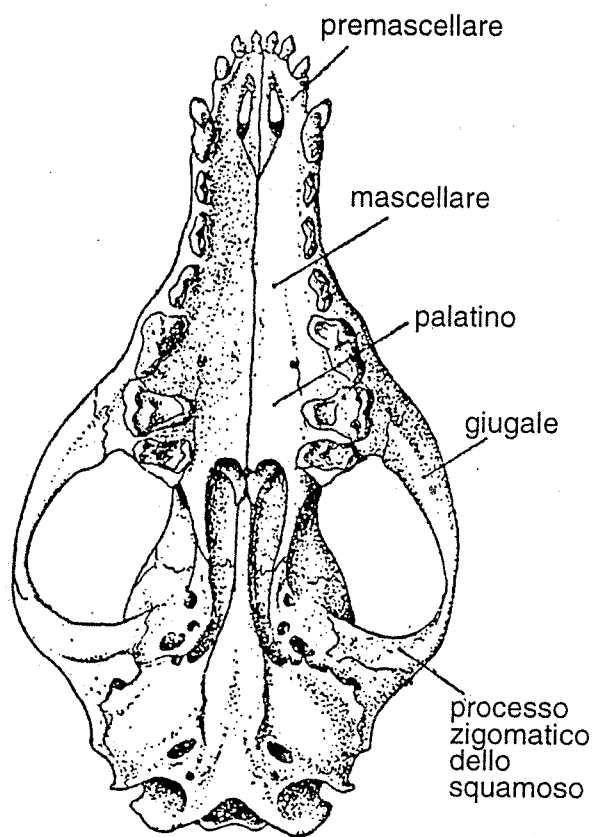
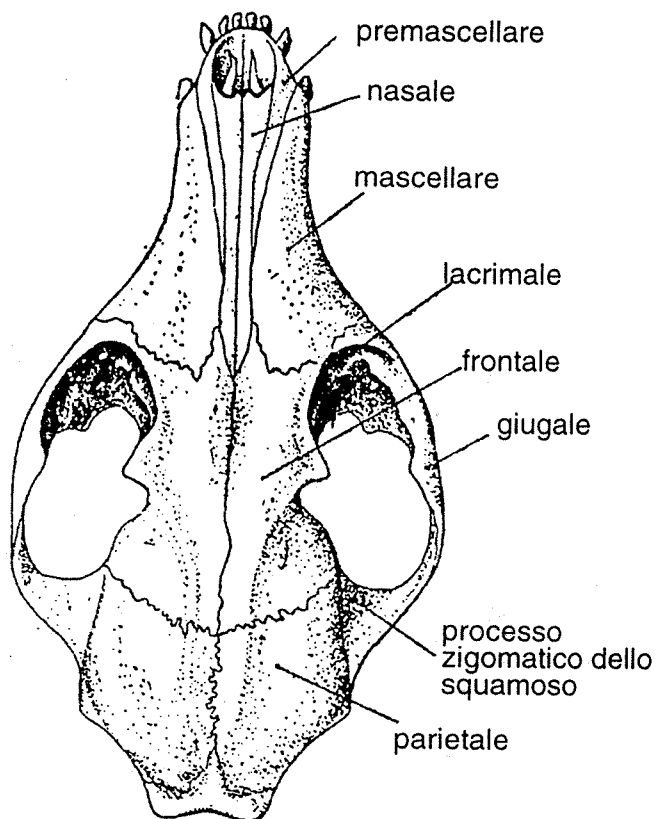




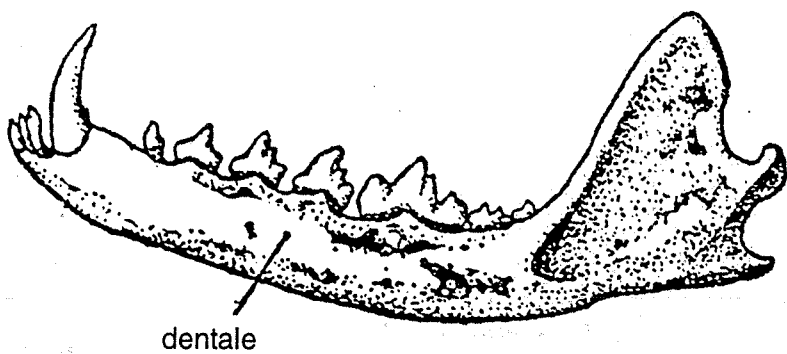
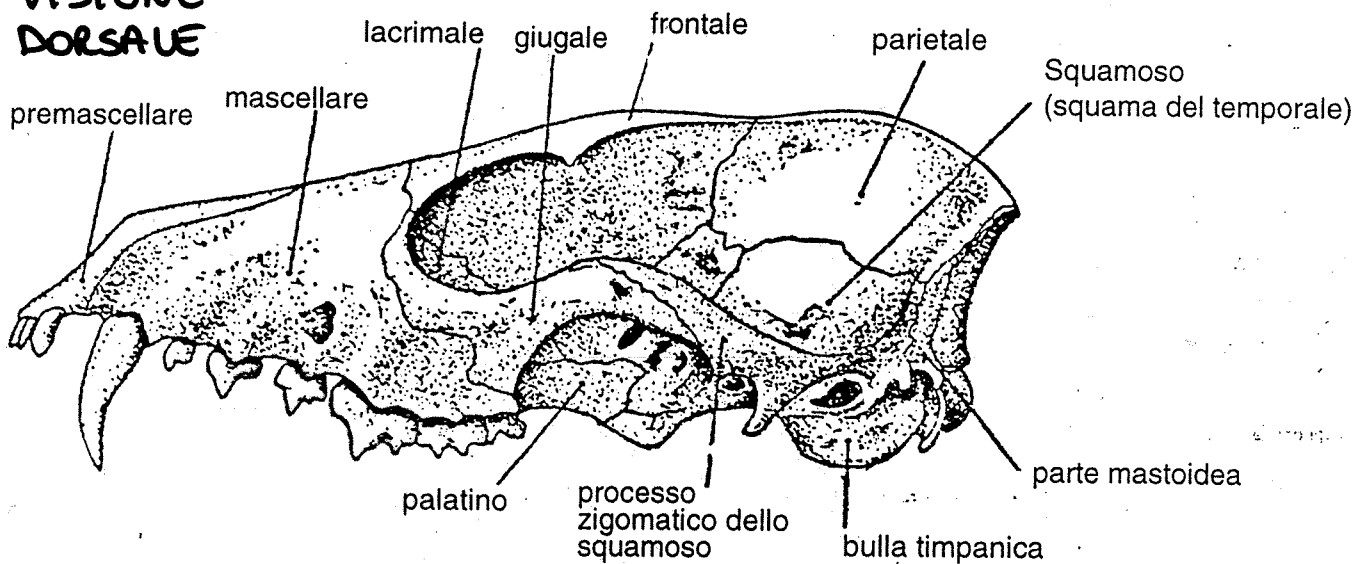
# Euteri

(lupo - *Lupus*)

VISIONE  
PALATALE

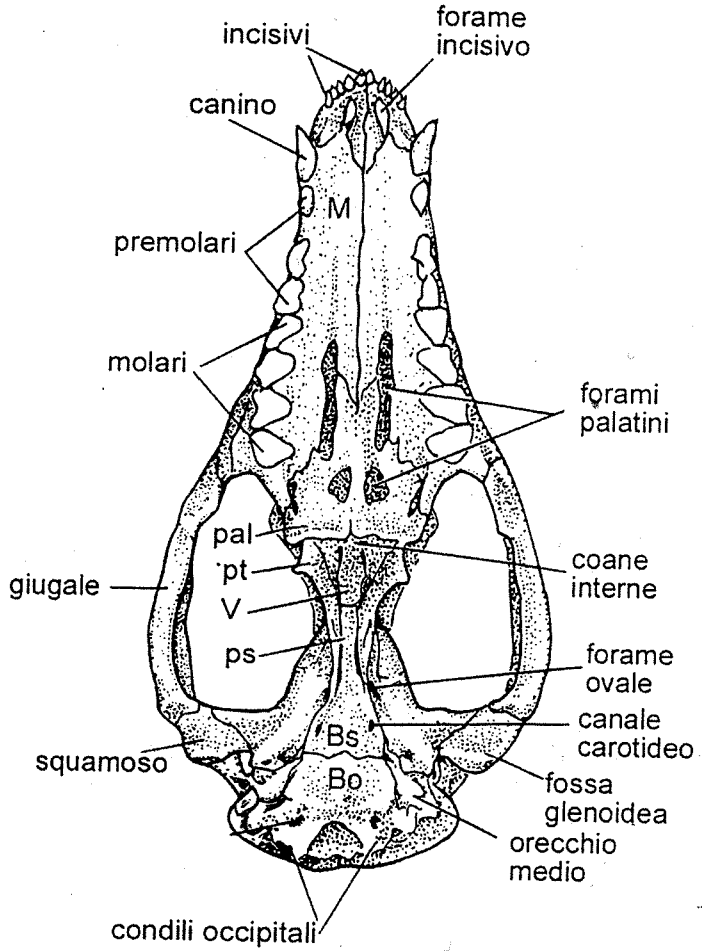
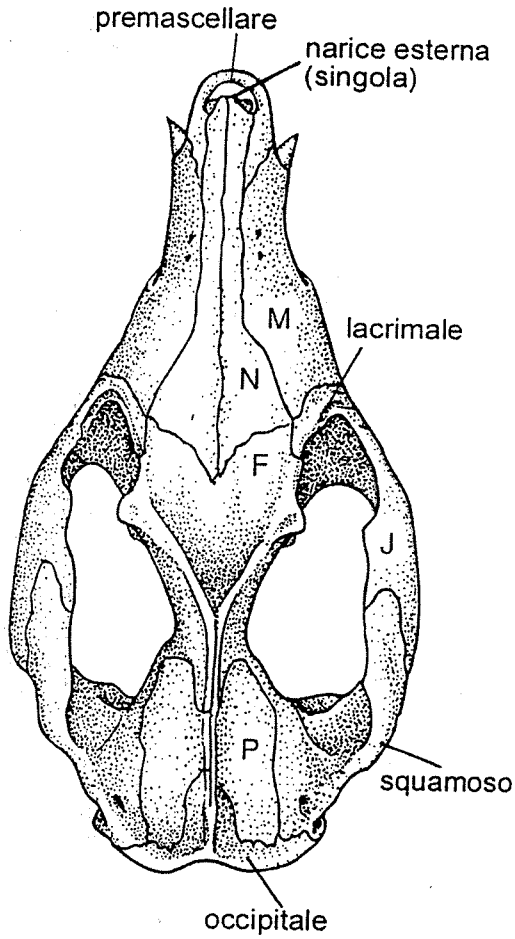


VISIONE  
DORSALE



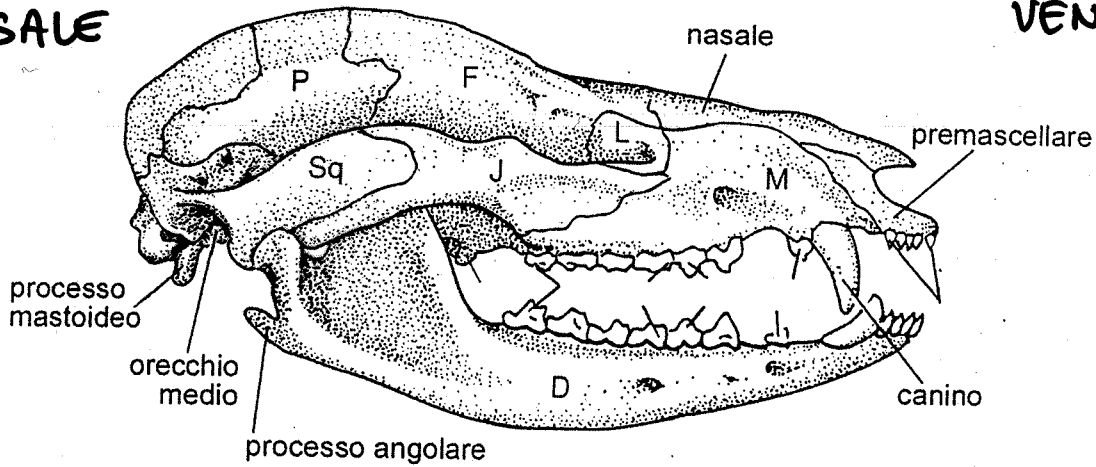
# Marsupiali

(opossum – *Didelphis*)



**VISIONE DORSALE**

**VISIONE VENTRALE**



N - nasali  
M - mascellari  
F - frontali  
P - parietali

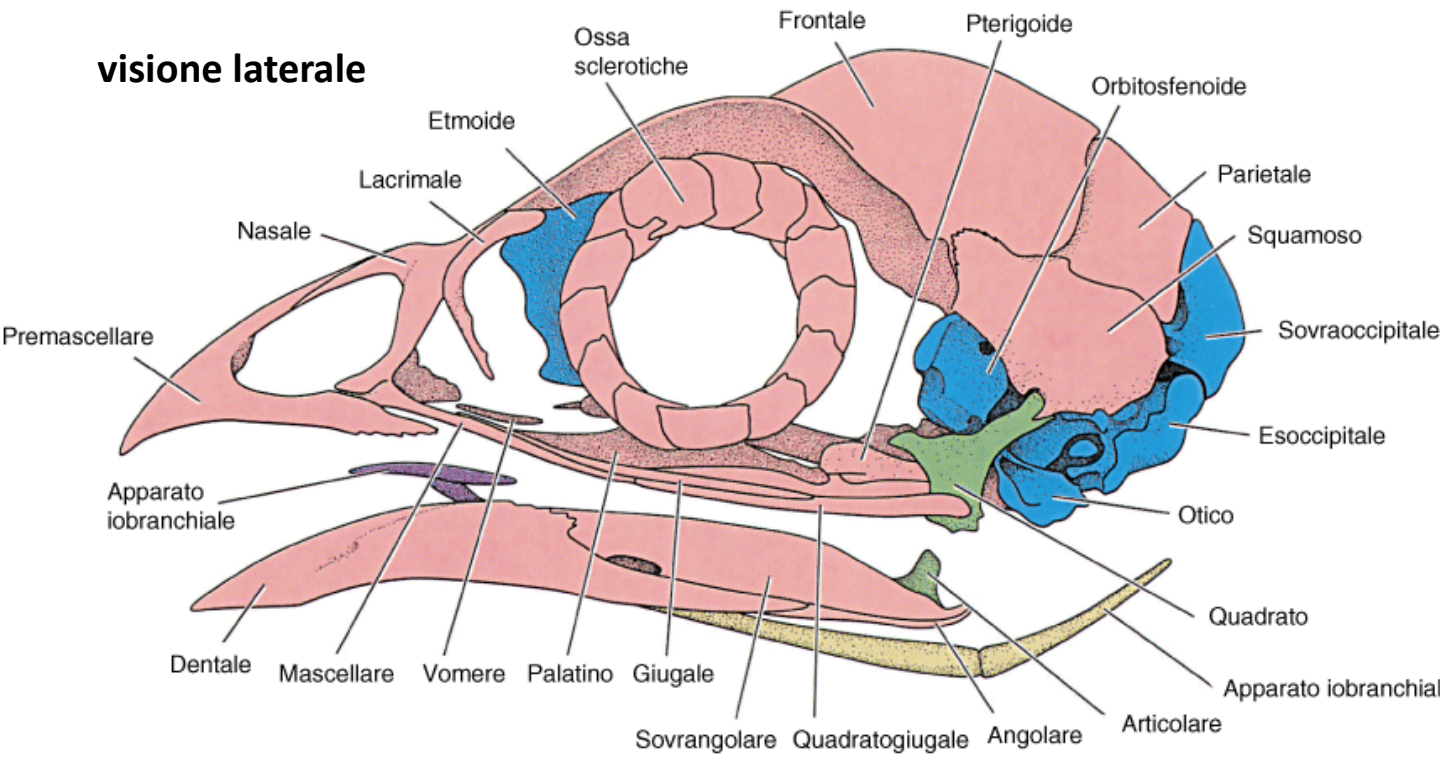
L - lacrimale  
J - giugale  
Sq - squamoso  
D - dentale

pal - palatino  
pt - pterigoidei  
V - vomere  
ps - parasfenoide

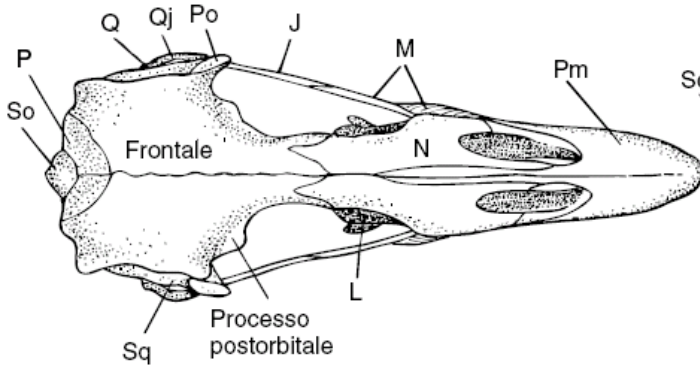
Bs - bsisfenoide  
Bo - basioccipitale

# Uccelli

## visione laterale

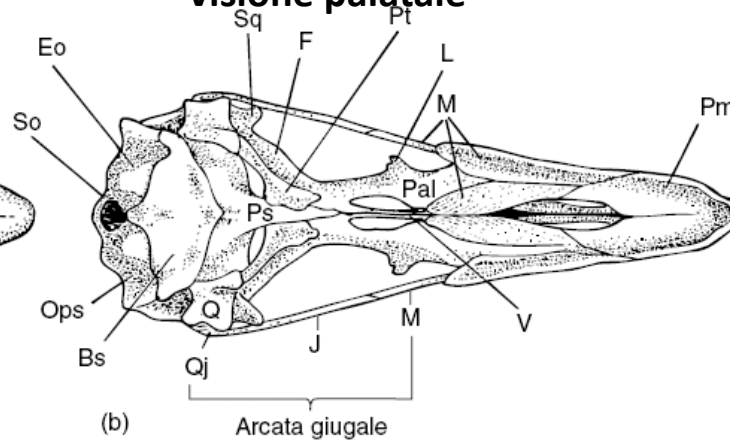


## visione dorsale



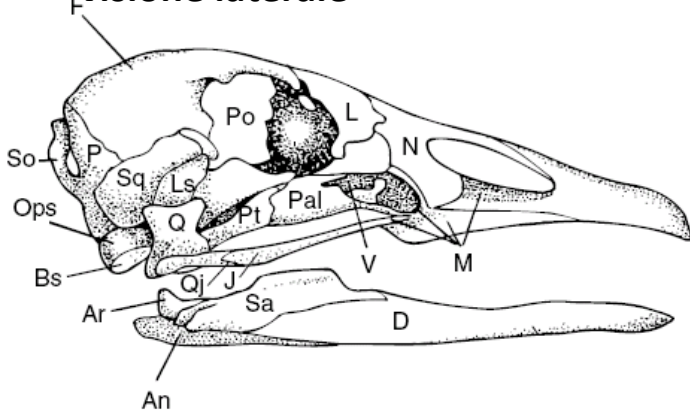
(a)

## visione palatale



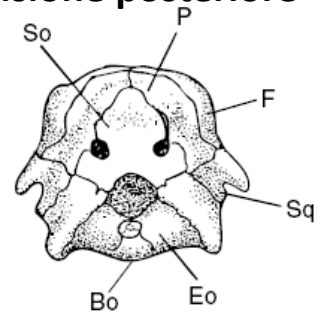
(b)

## visione laterale



(c)

## visione posteriore



(d)