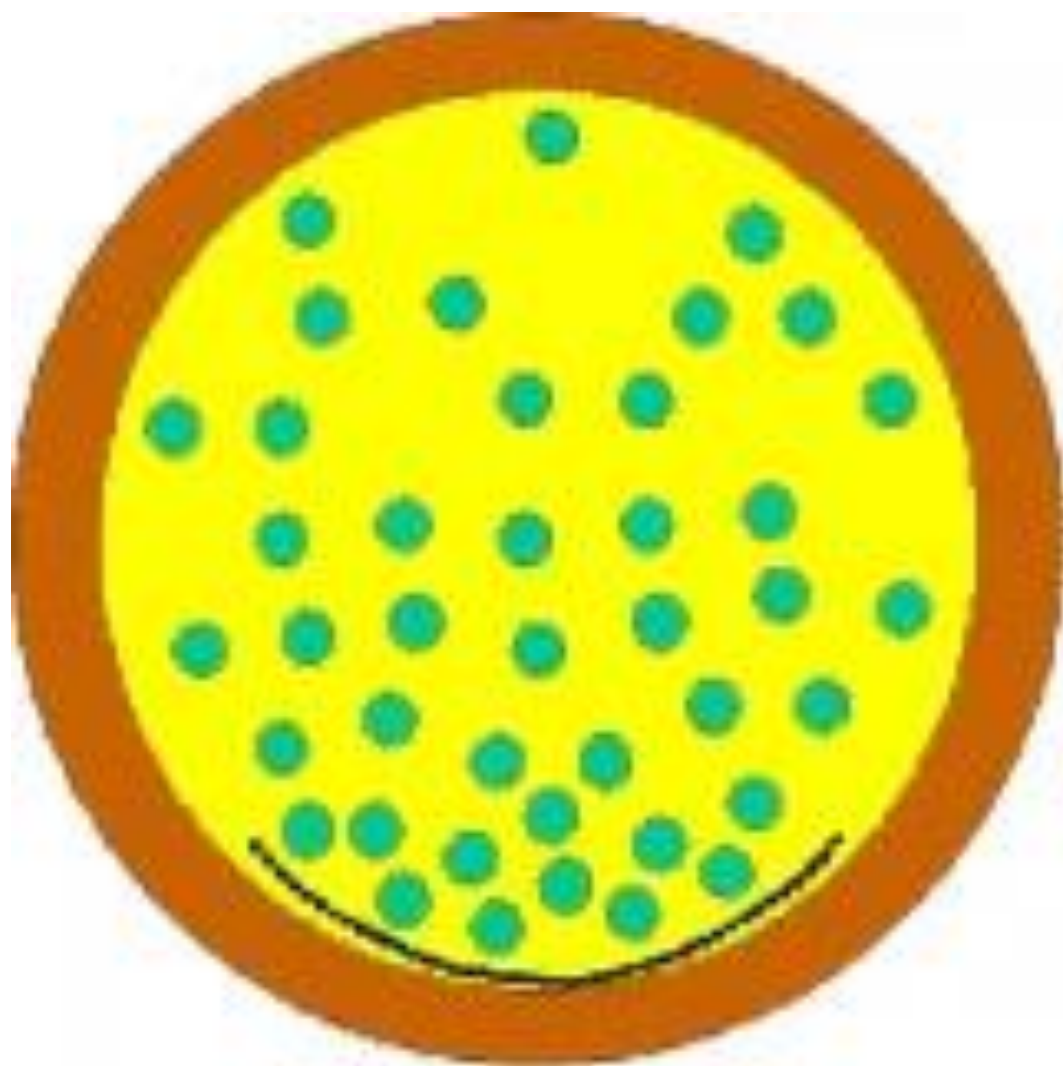


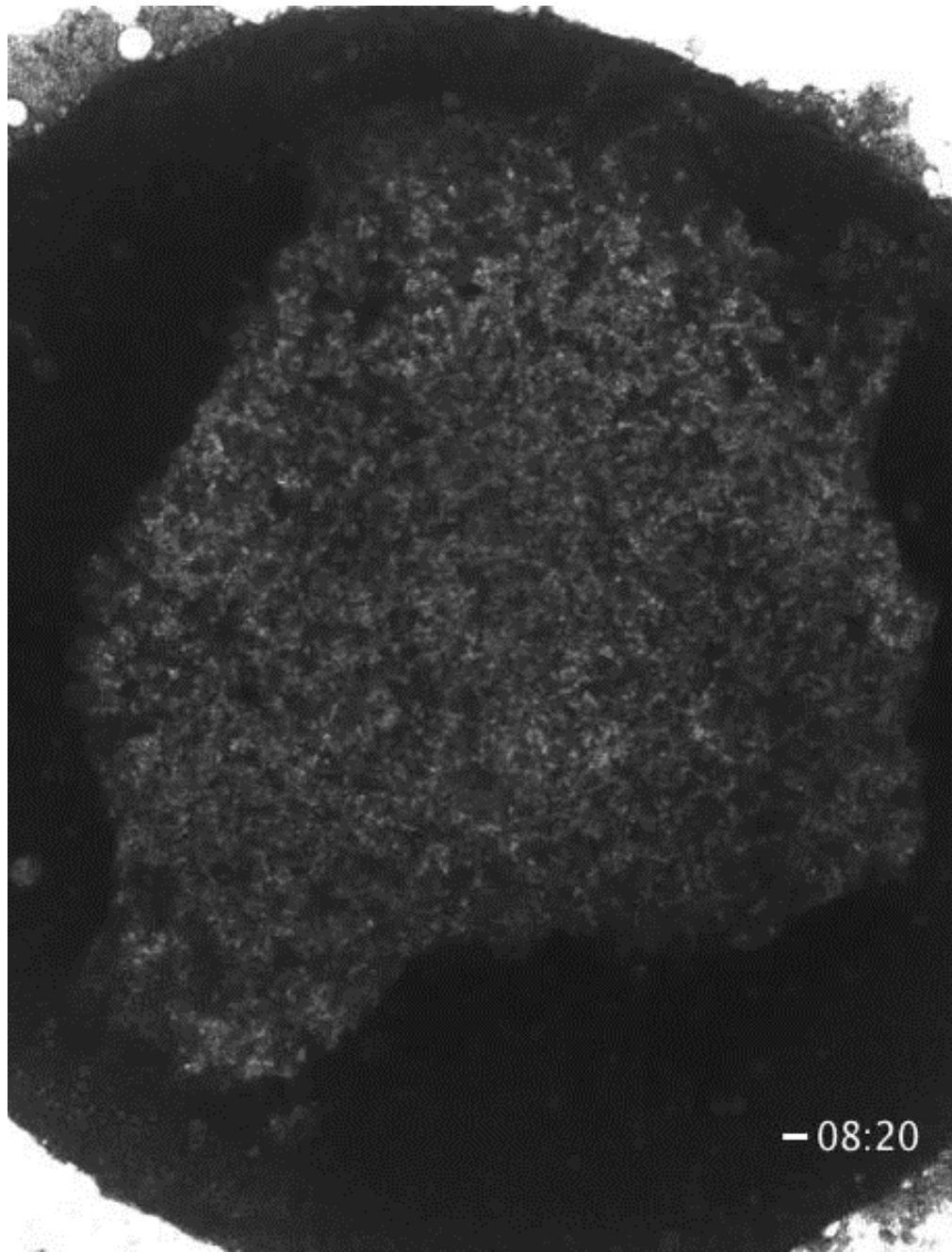


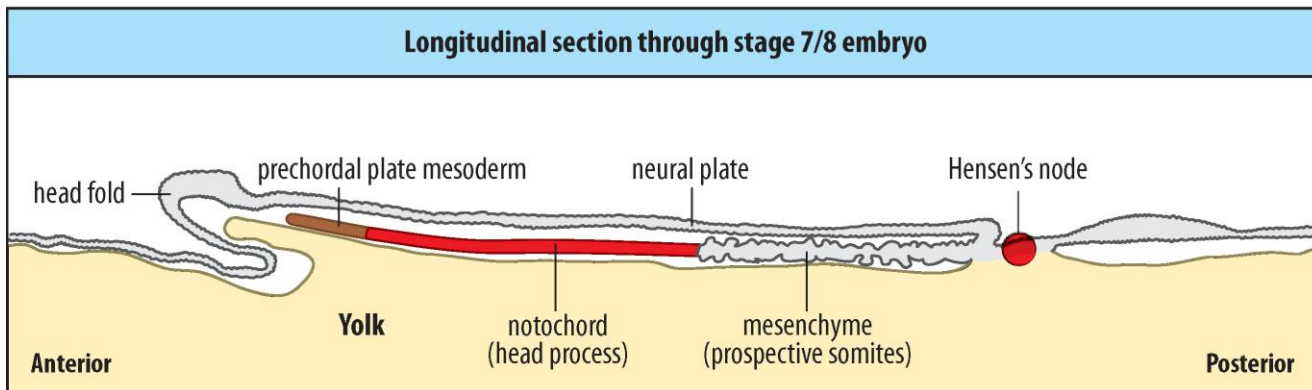
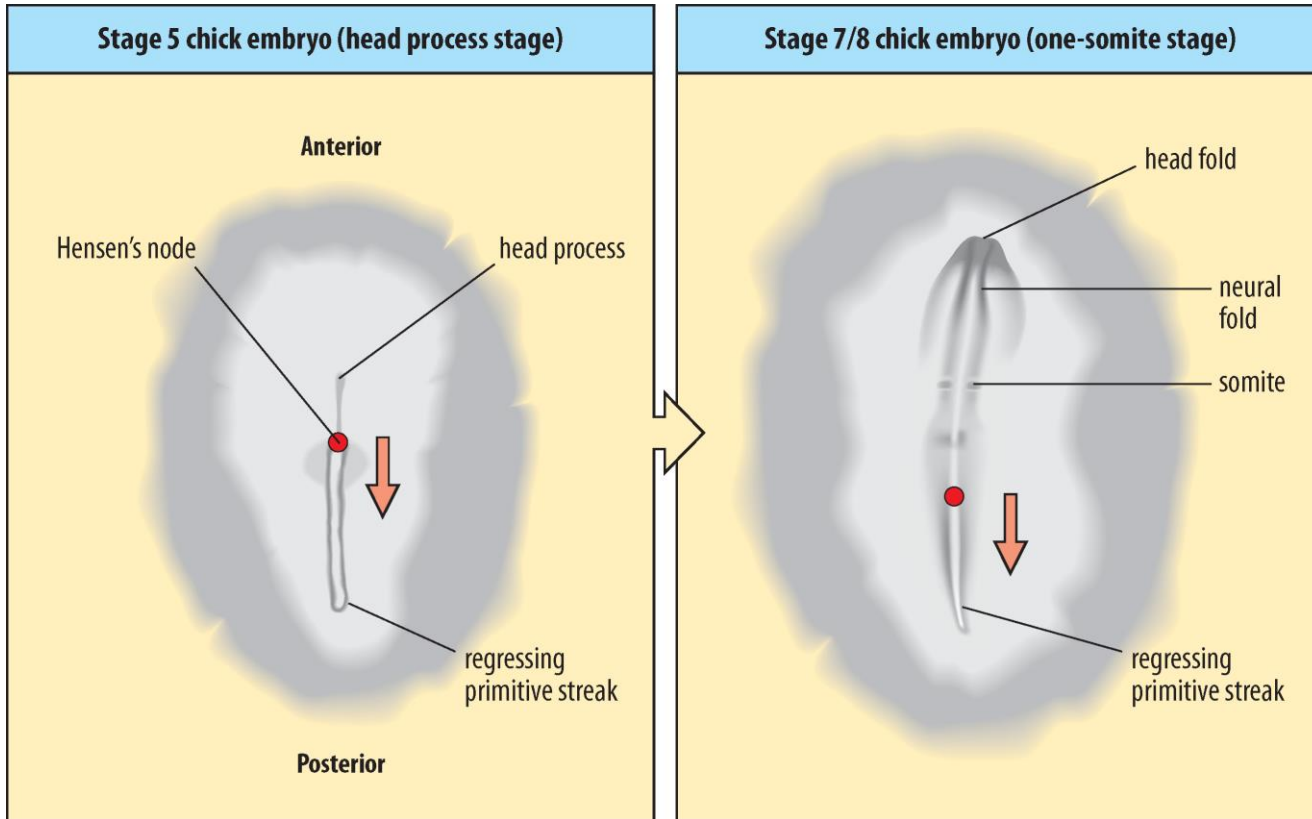


UNIT 3

ANIMAL LIFE



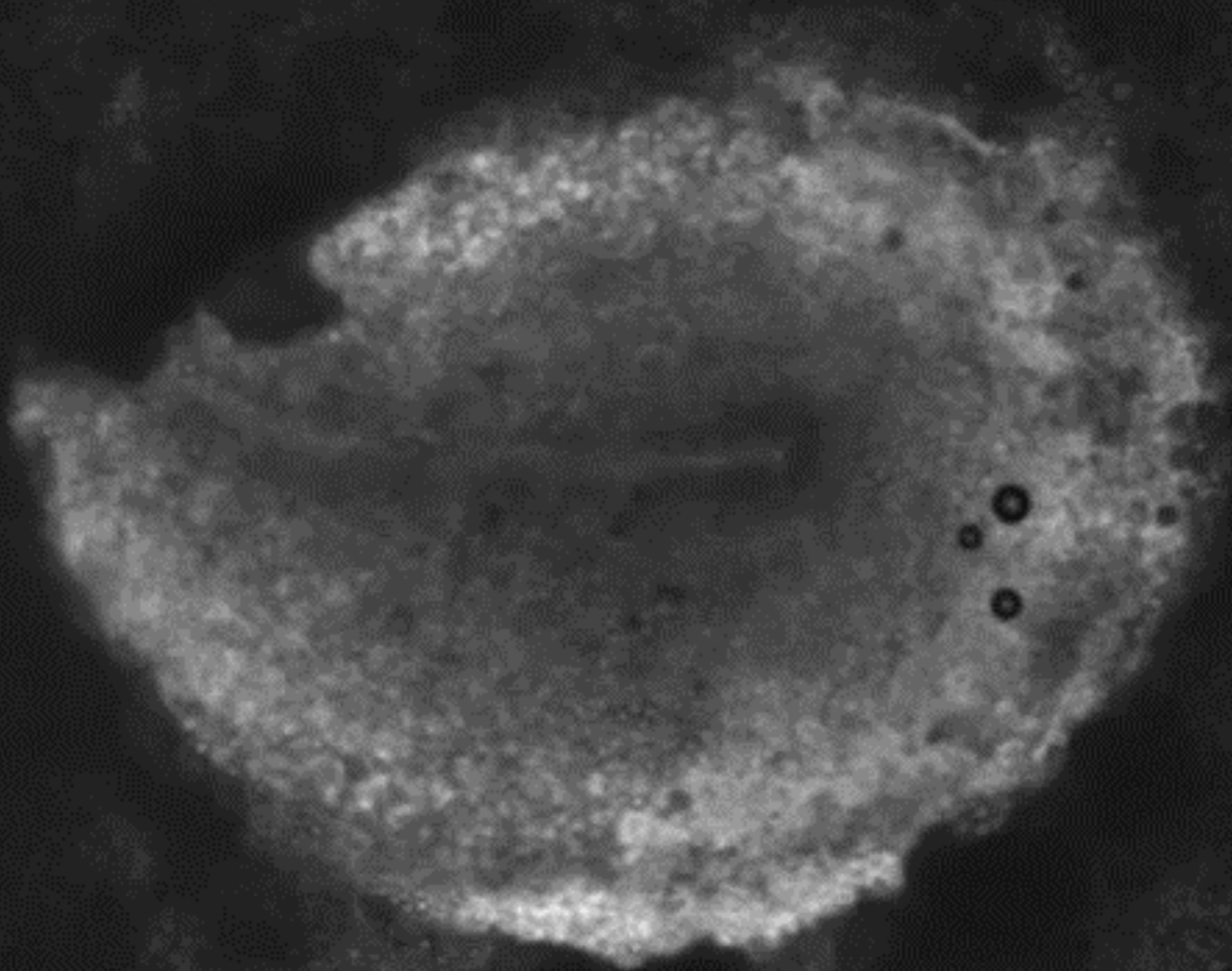




Chicken Embryo - Somitogenesis

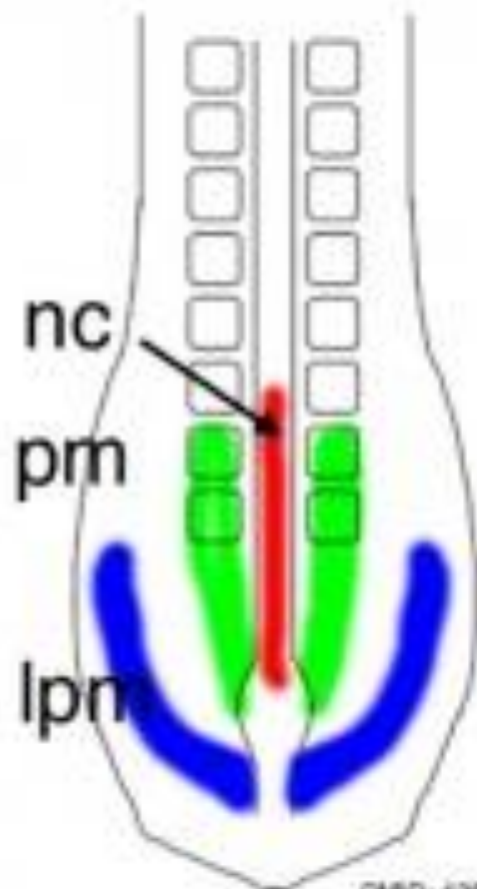
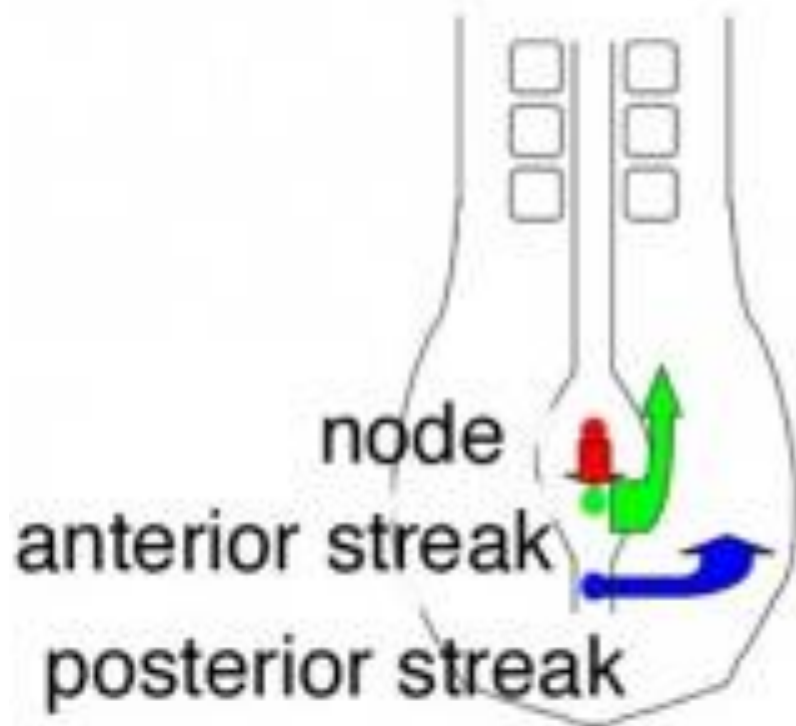
00:00:00

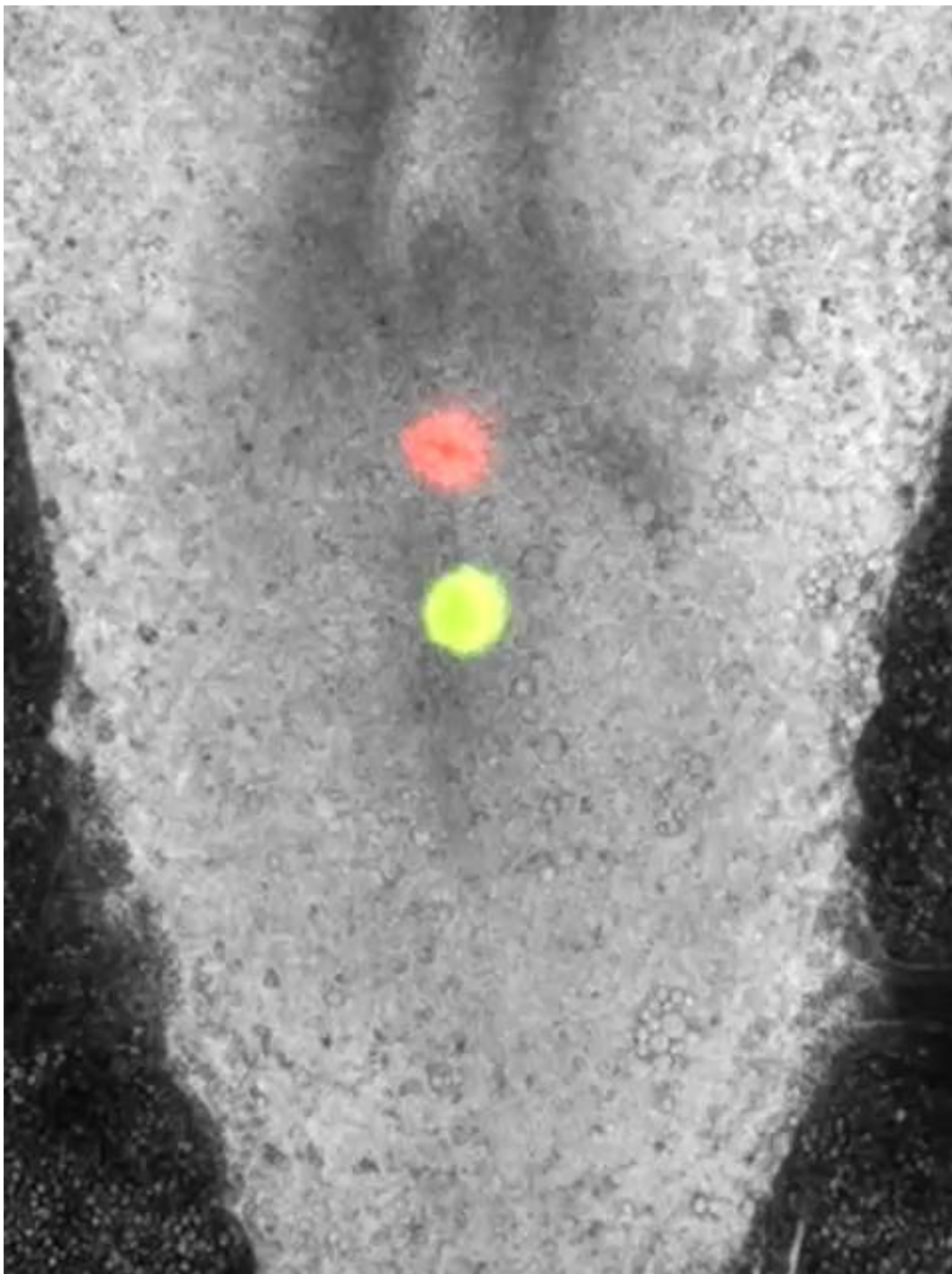
Dias AS, de Almeida I, Belmonte JM, Glazier JA, Stern CD.
Science. 2014 Feb 14;343(6172):791-5

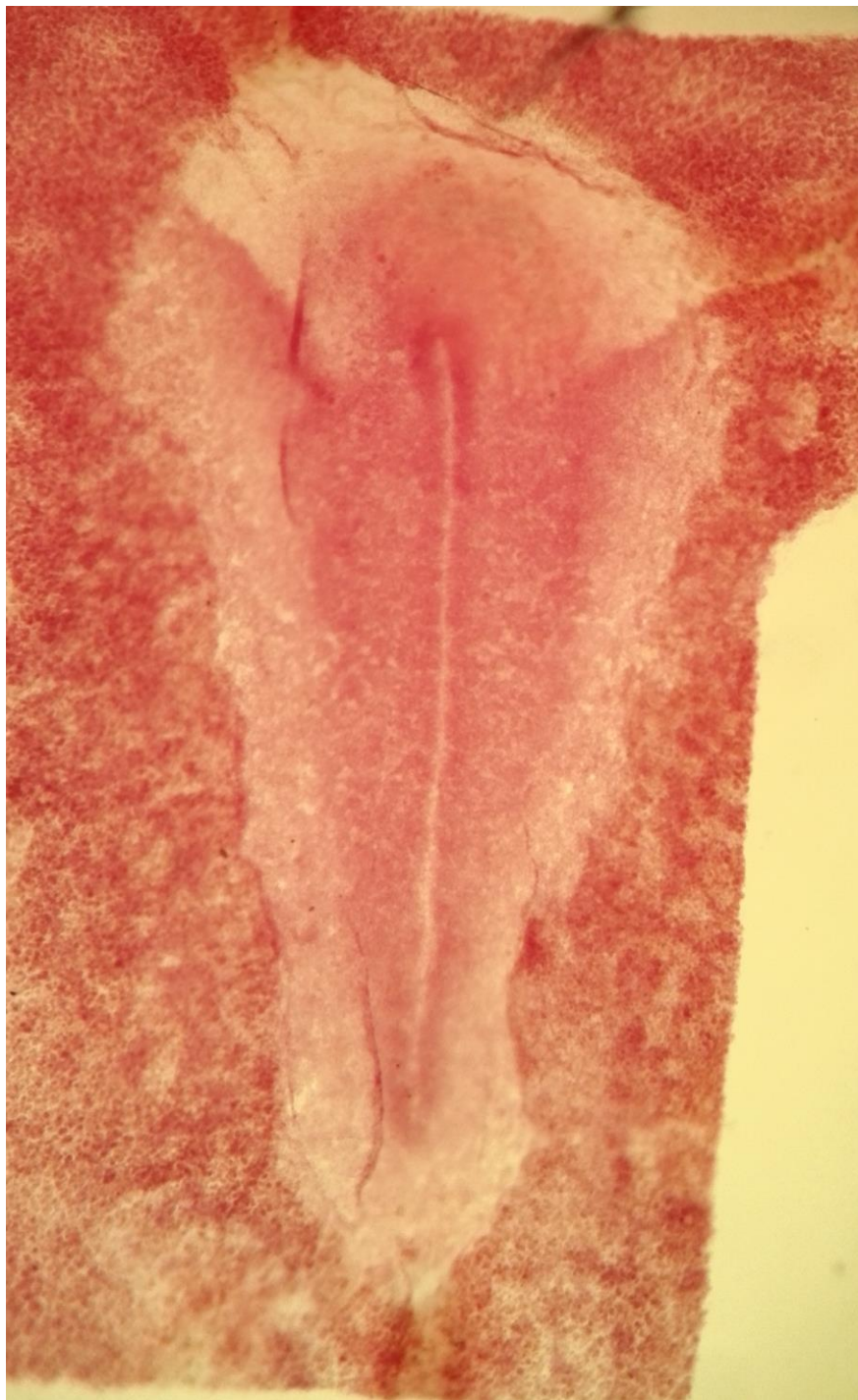


PMID: 24407478

Cell Fate from Primitive Streak
(HH stage 8 to 12 chick embryo)



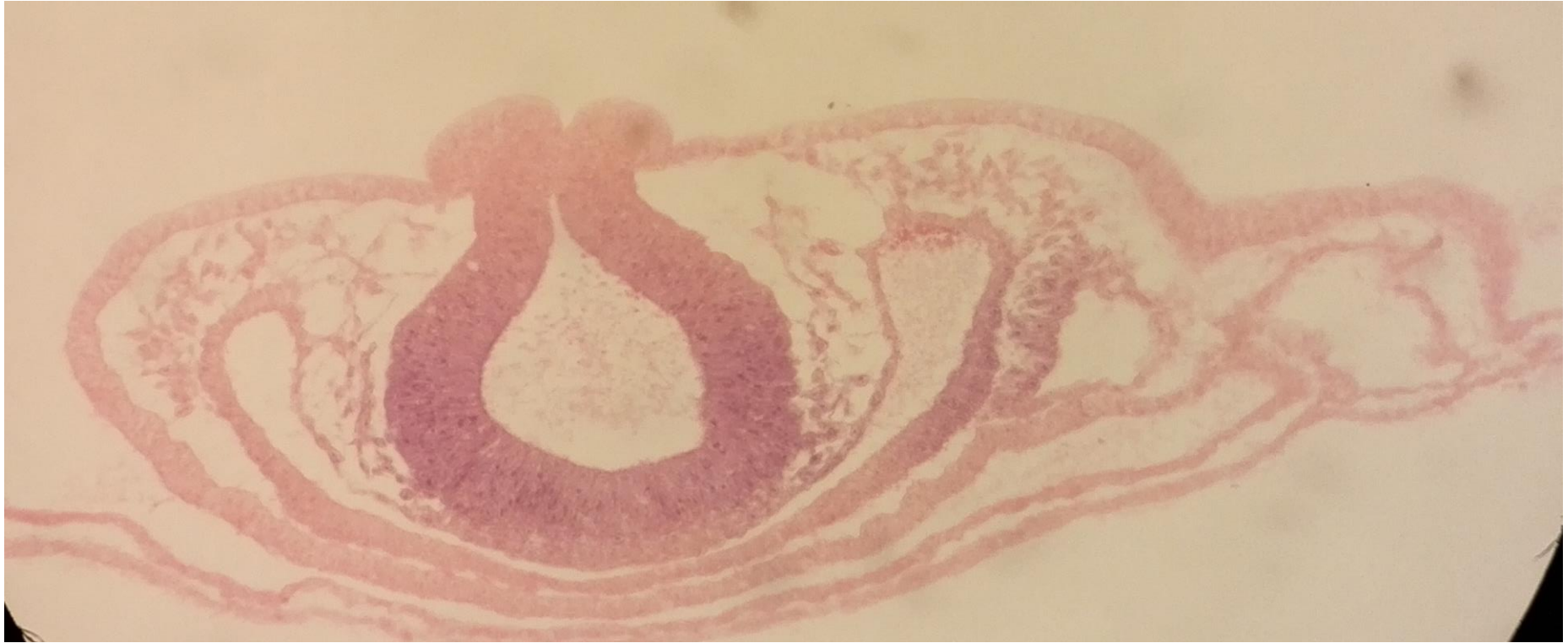




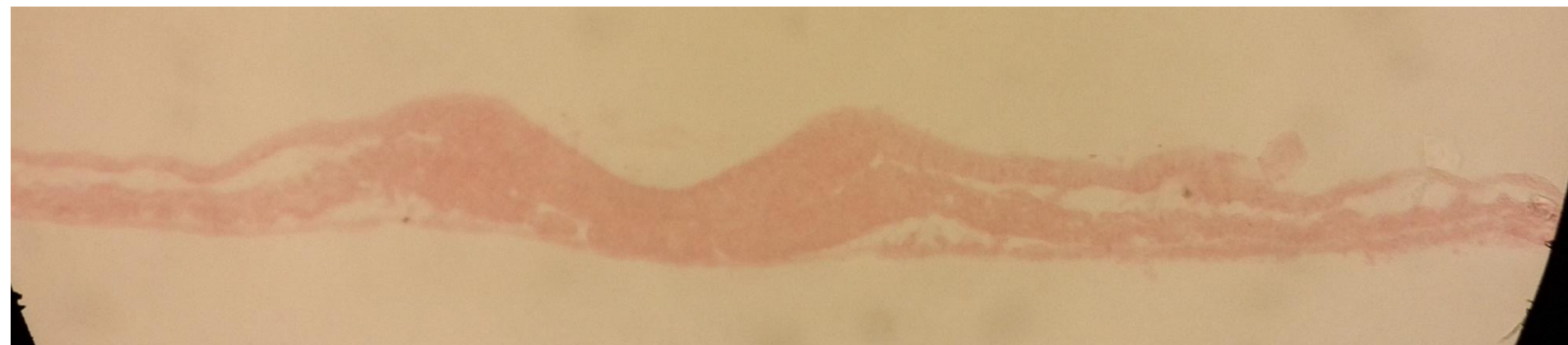


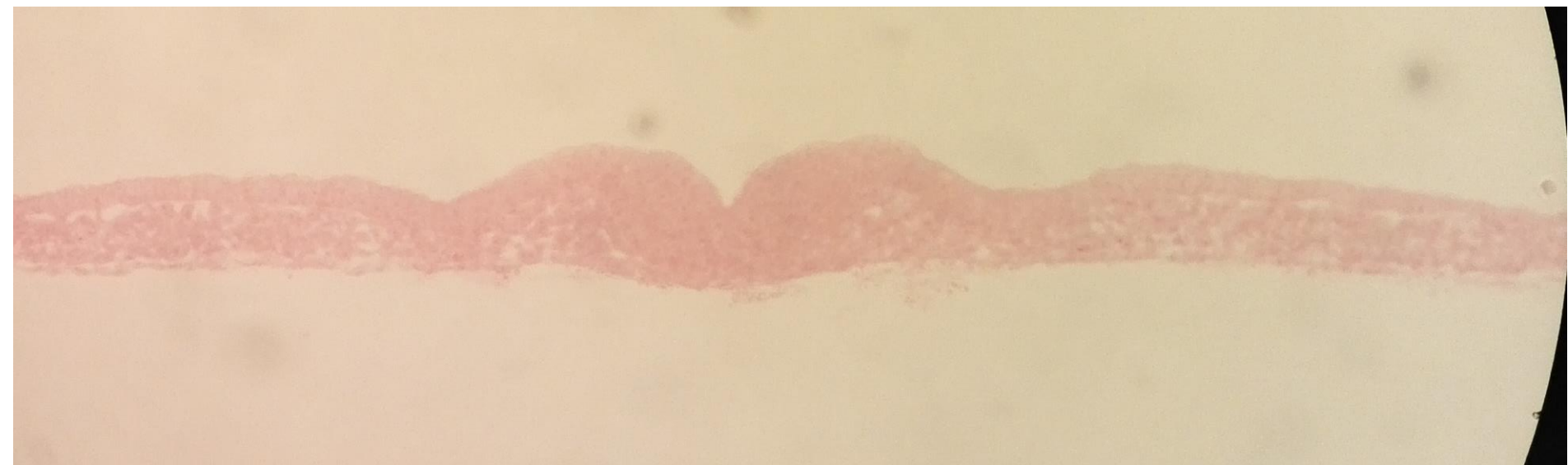




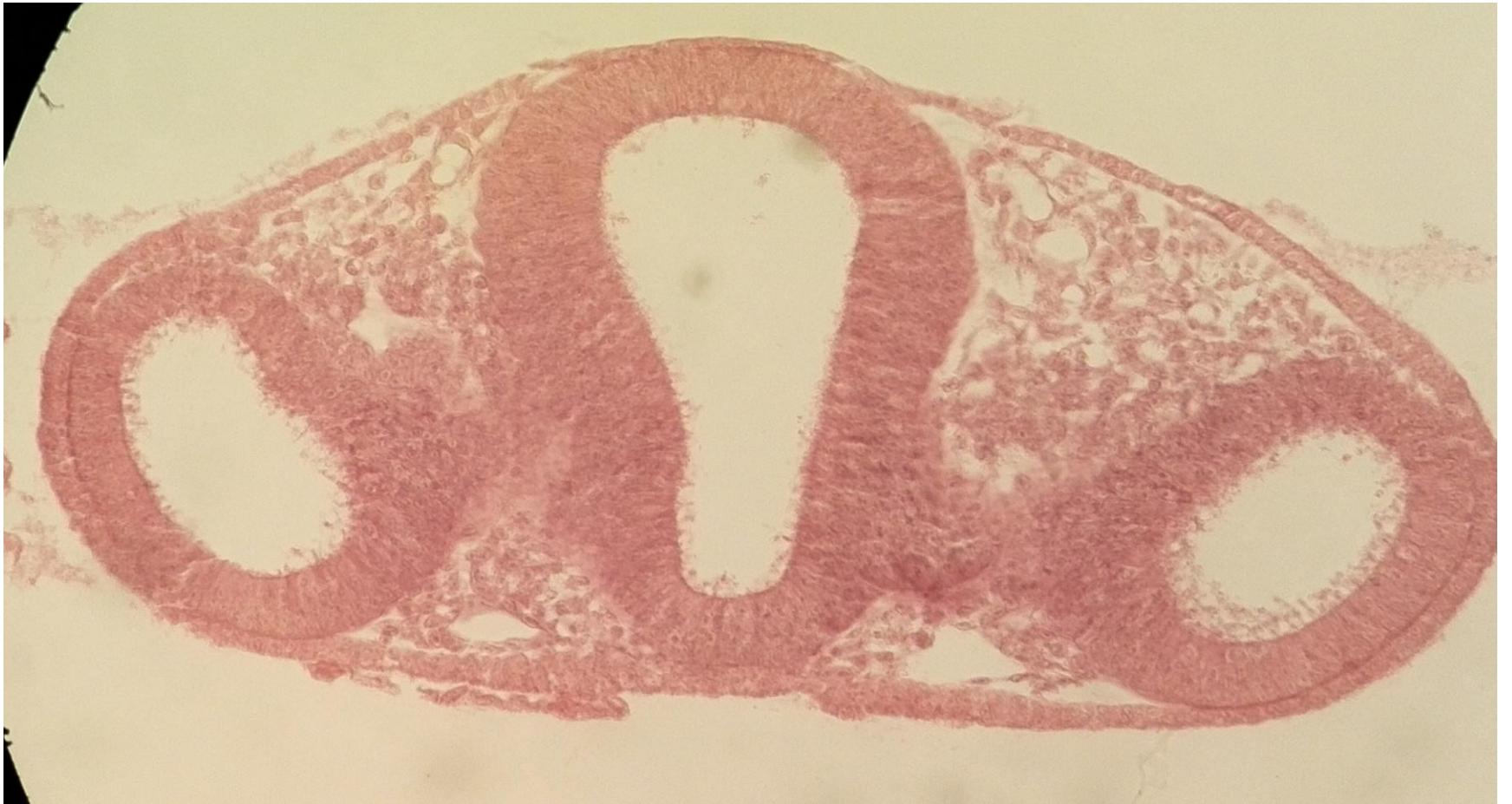


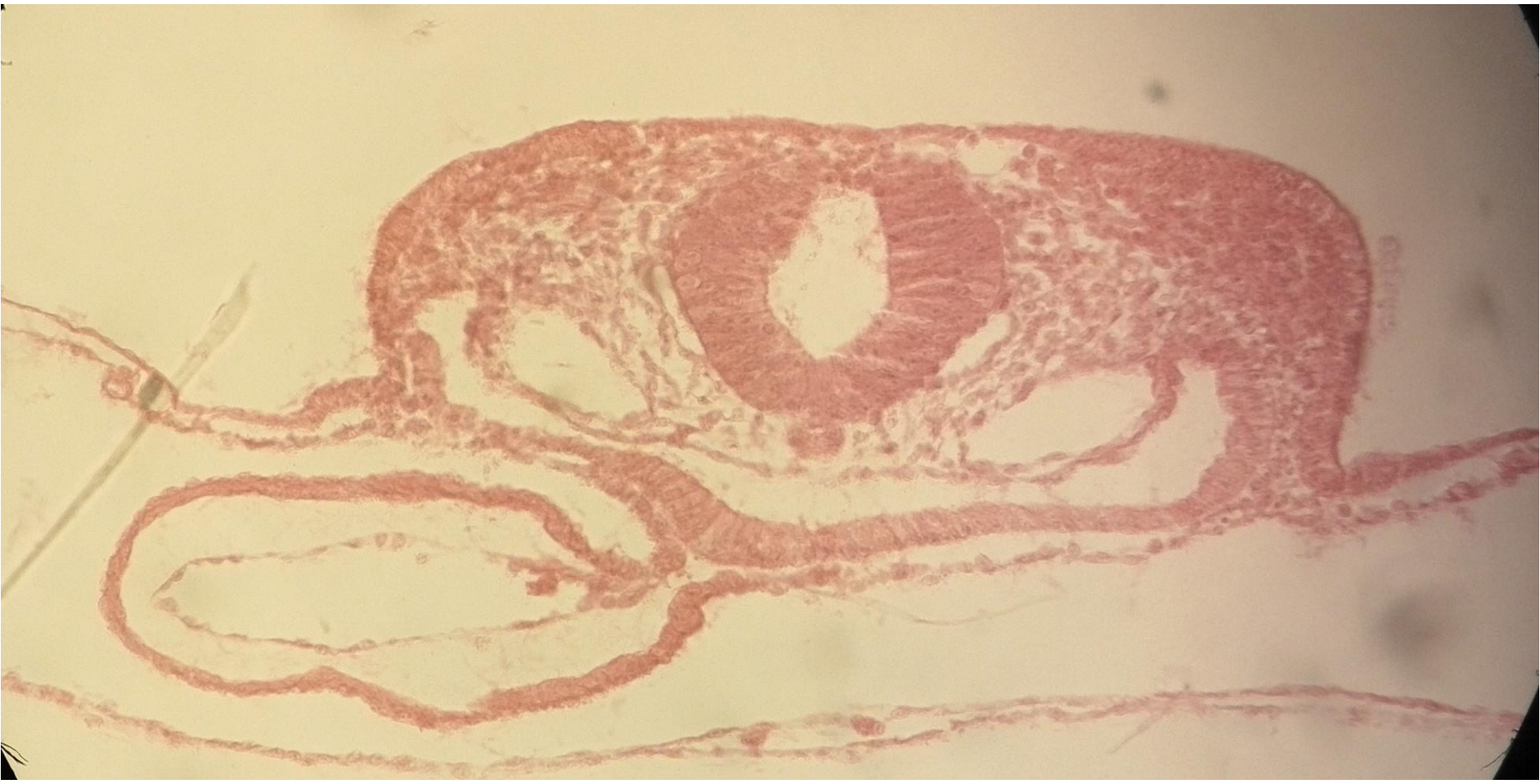


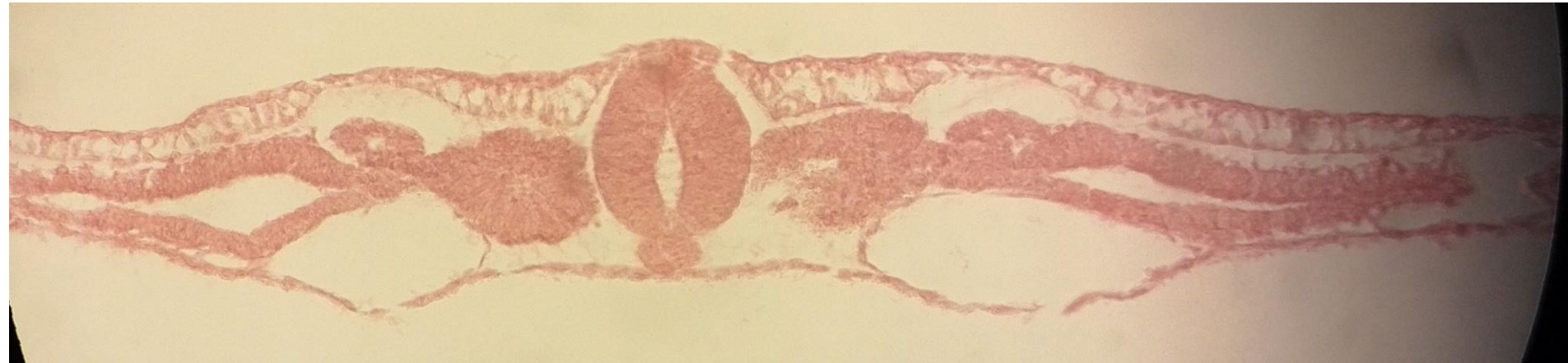


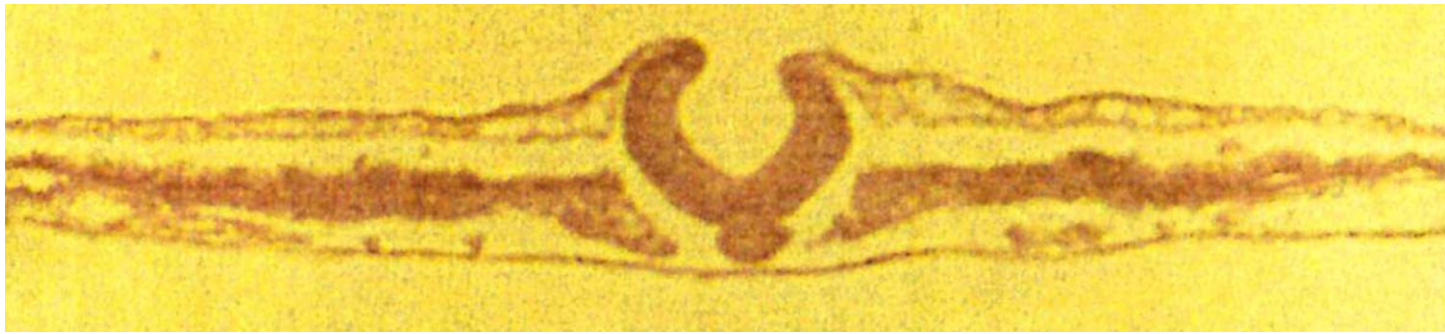
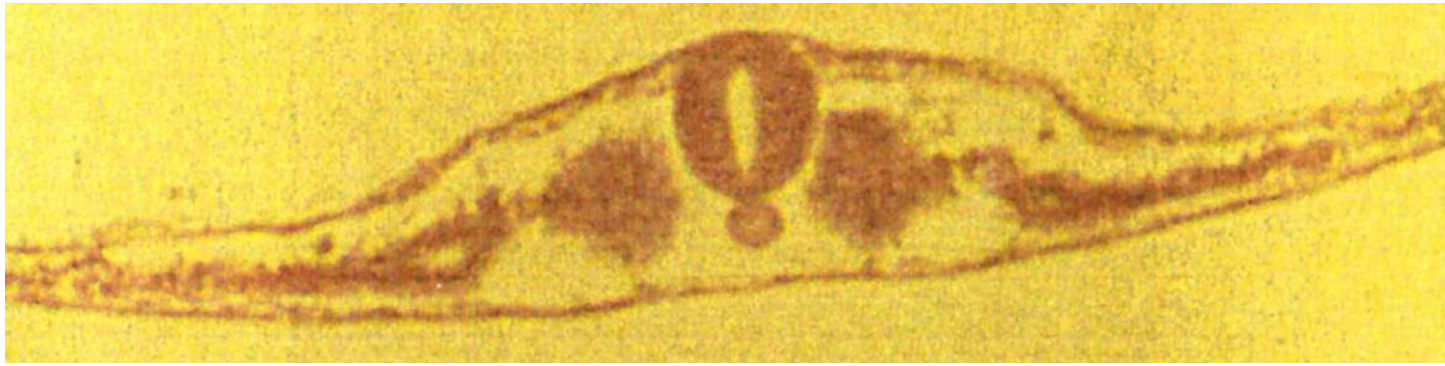
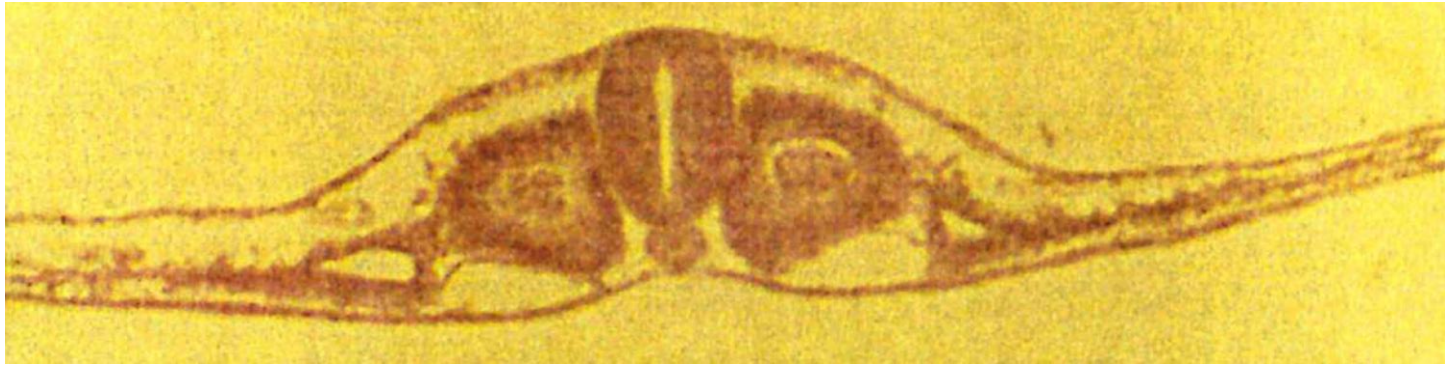




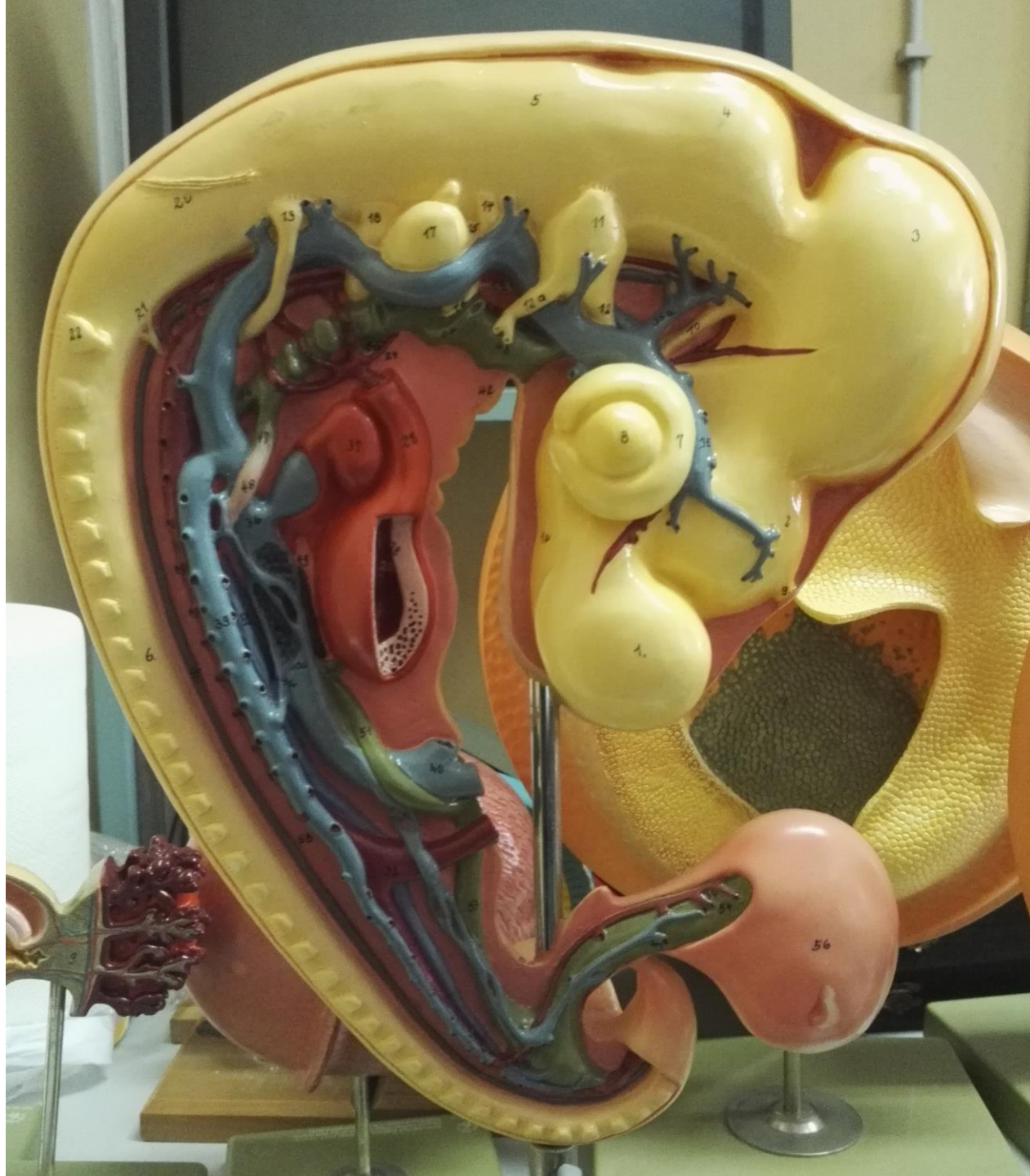




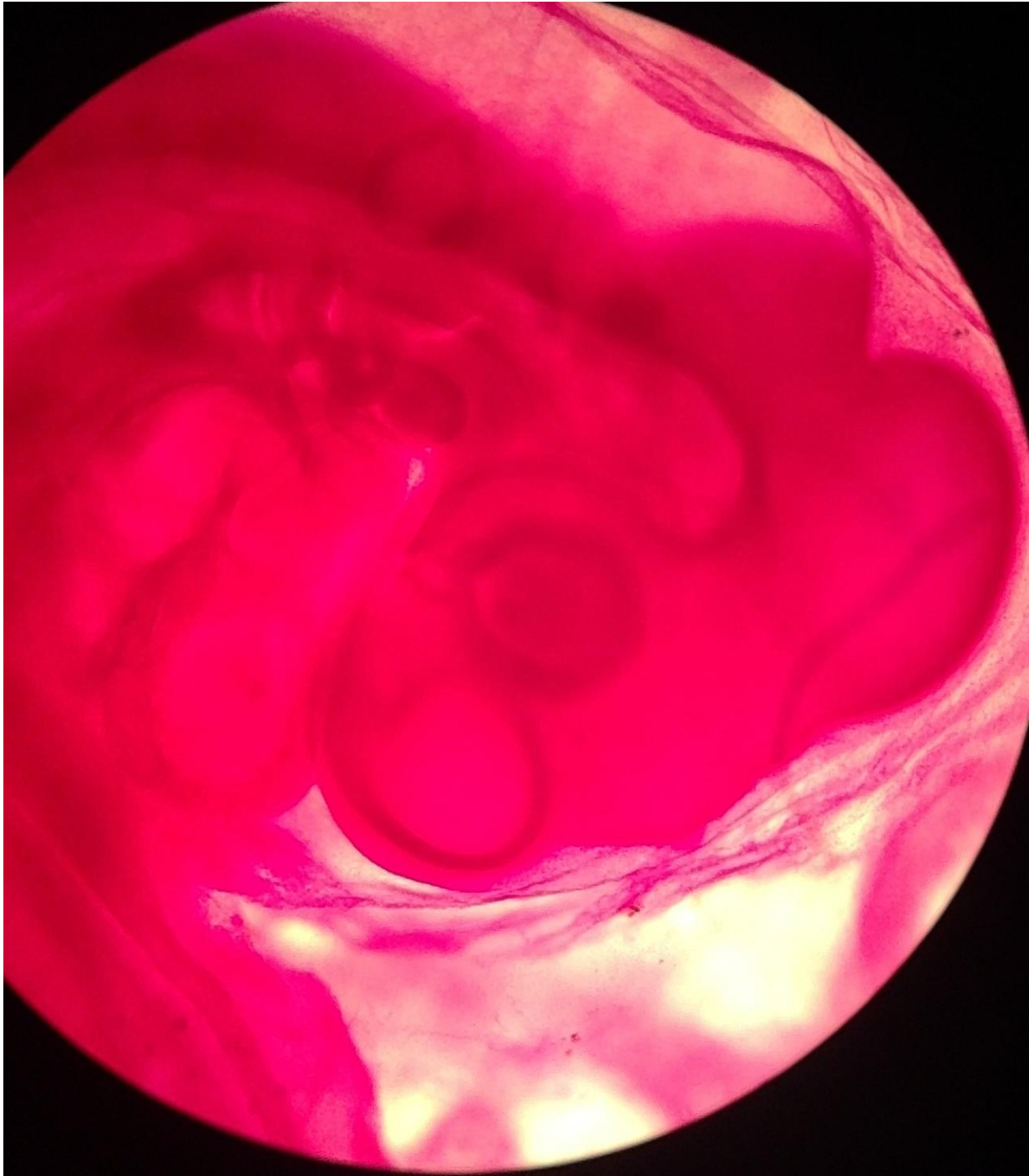




A
↓
P









Chick gastrulation

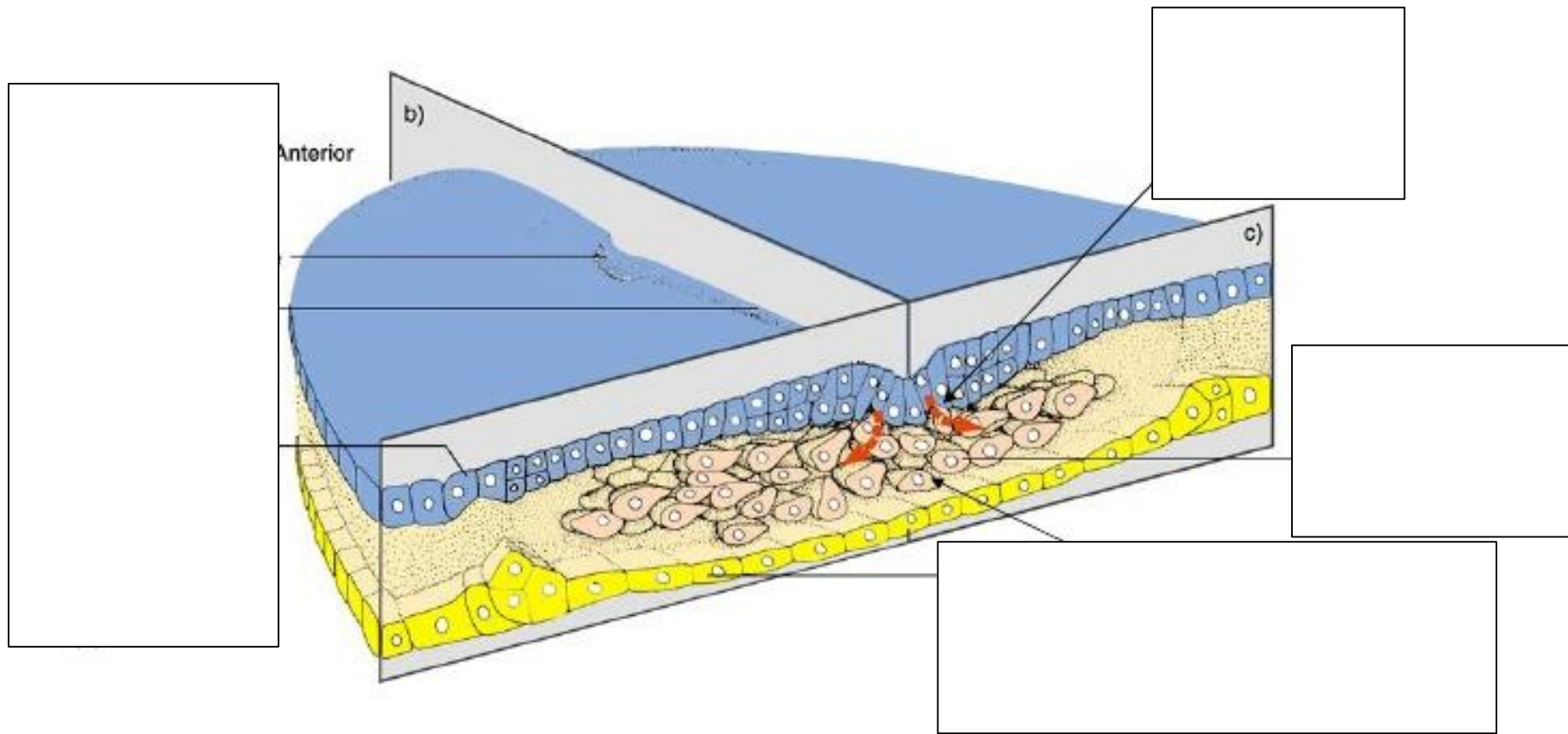


Figure 10.24

Chick gastrulation

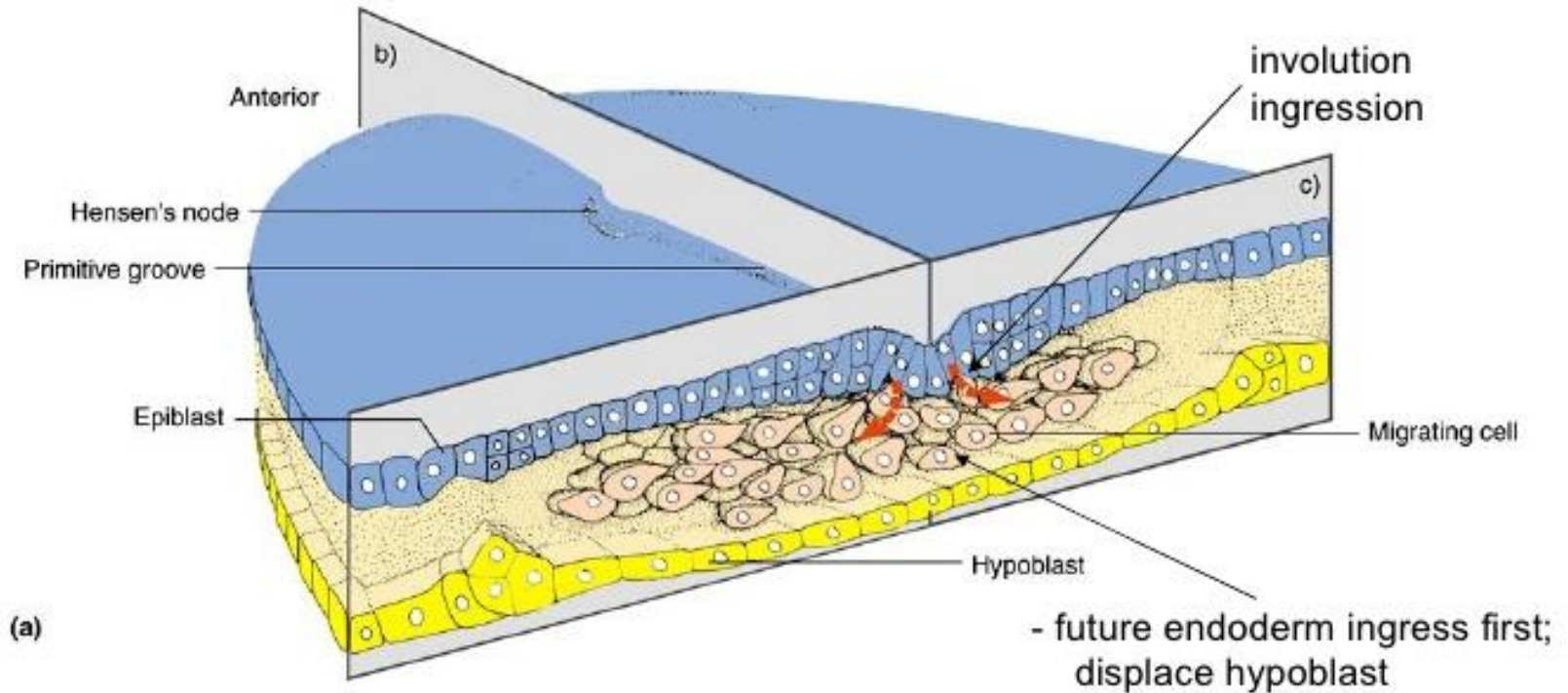
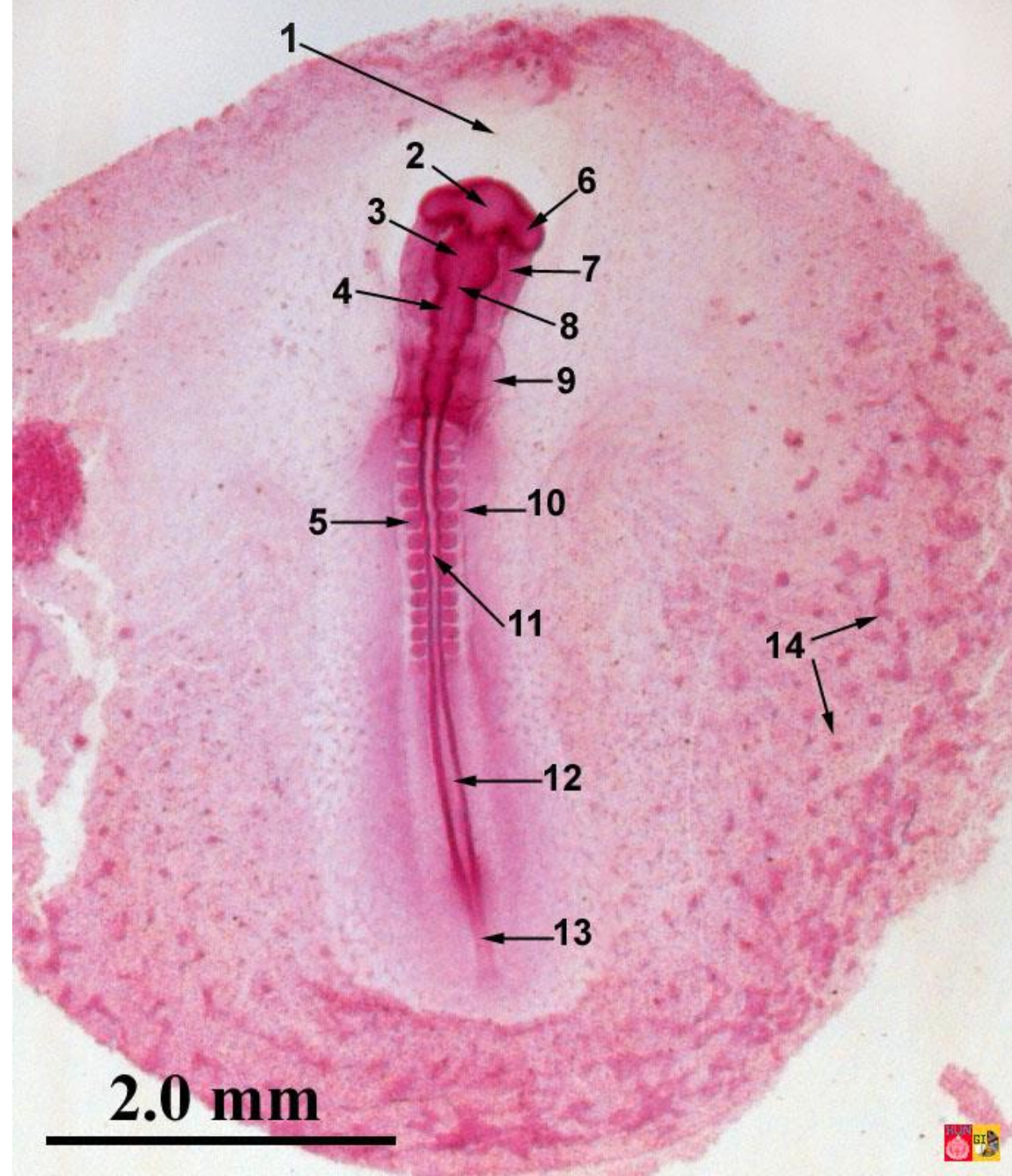


Figure 10.24



**Embryology of chicken 33 hours after fertilization:
stained whole mount preparation**

- 1 = Proamnion,
- 2 = Prosencephalon,
- 3 = Mesencephalon,
- 4 = Rhombencephalon,
- 5 = Somite, 6 = Eye vesicle,
- 7 = Foregut, 8 = Chorda (translucent), 9 = Heart,
- 10 = Lateral mesoderm,
- 11 = Spine, 12 = Sinus rhomboidalis, 13 = Primitive streak,
- 14 = Blood islands

2.0 mm



