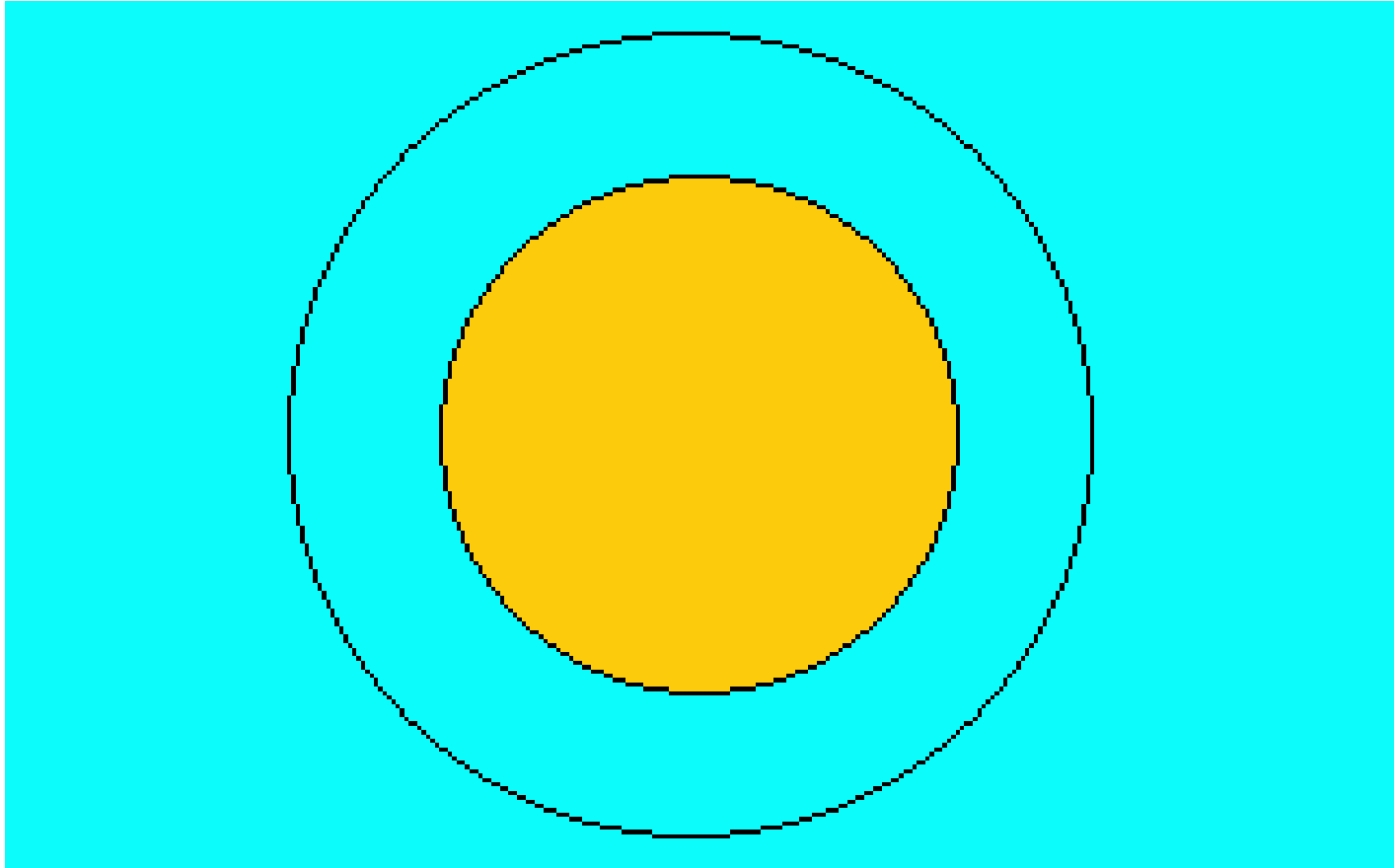
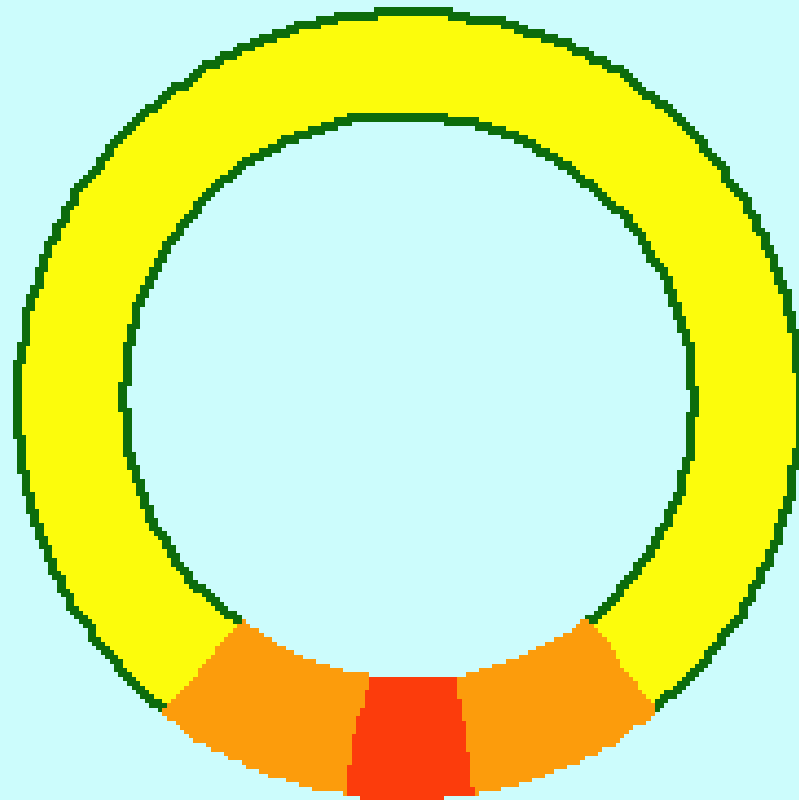
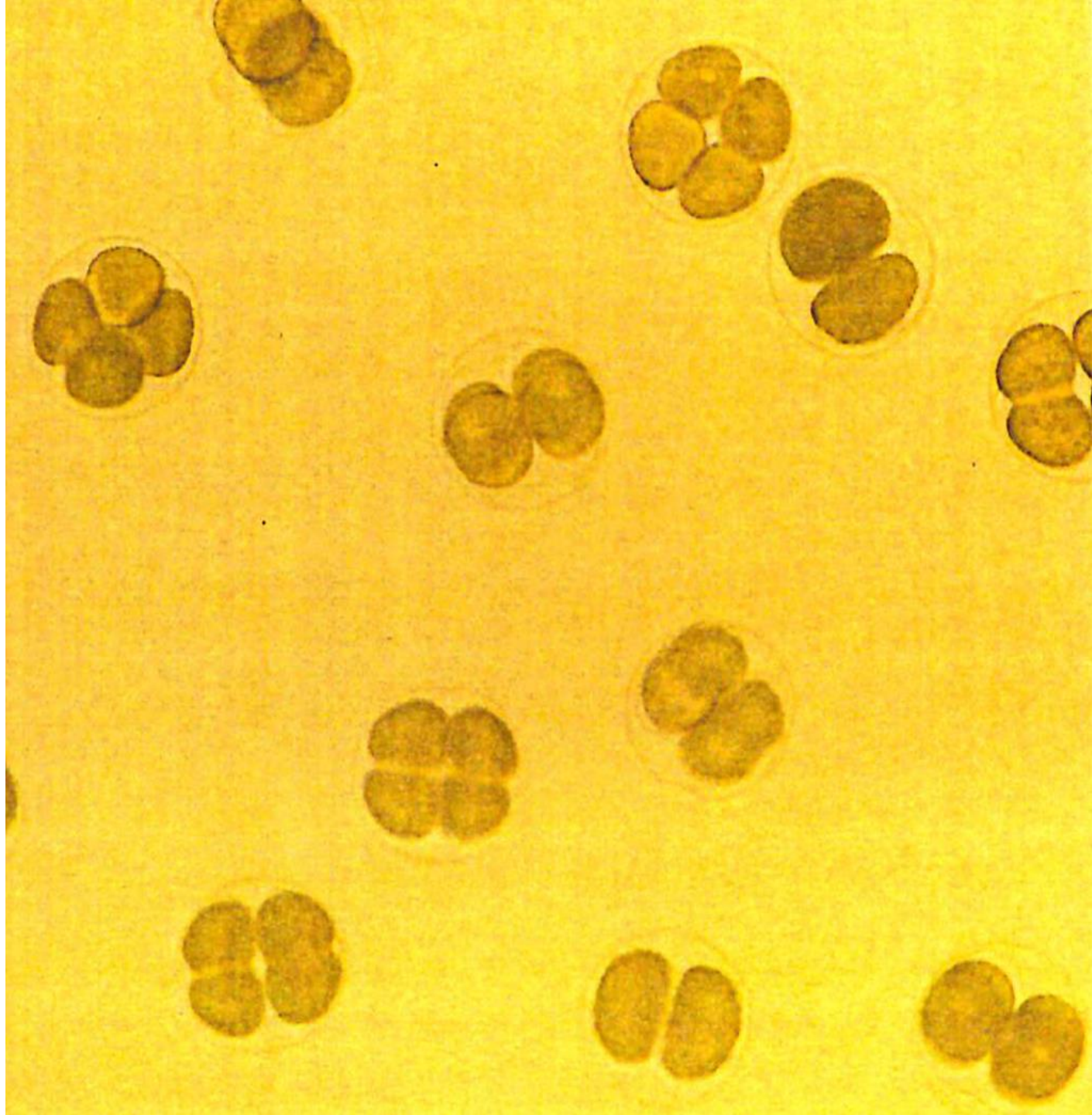


30







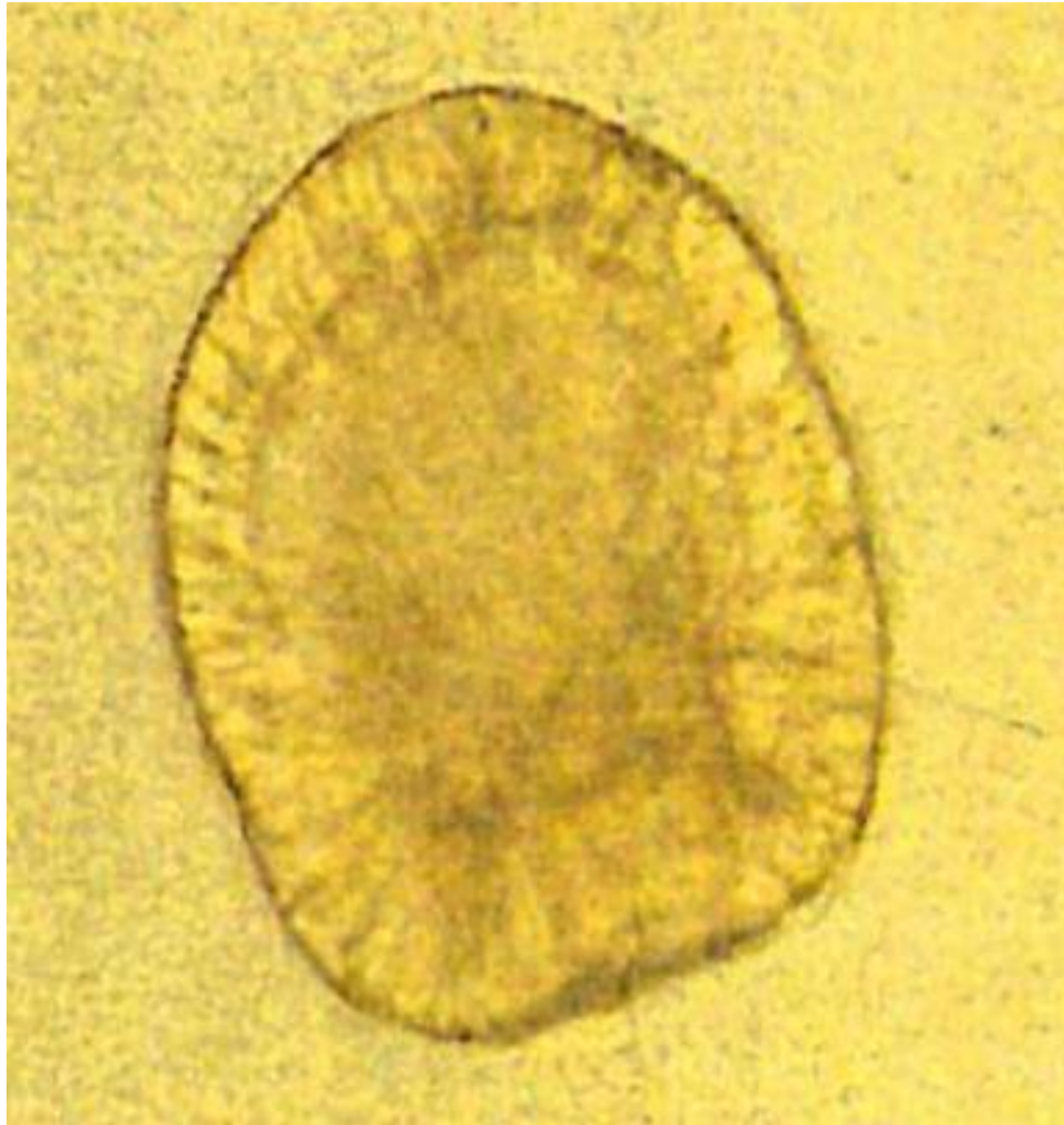














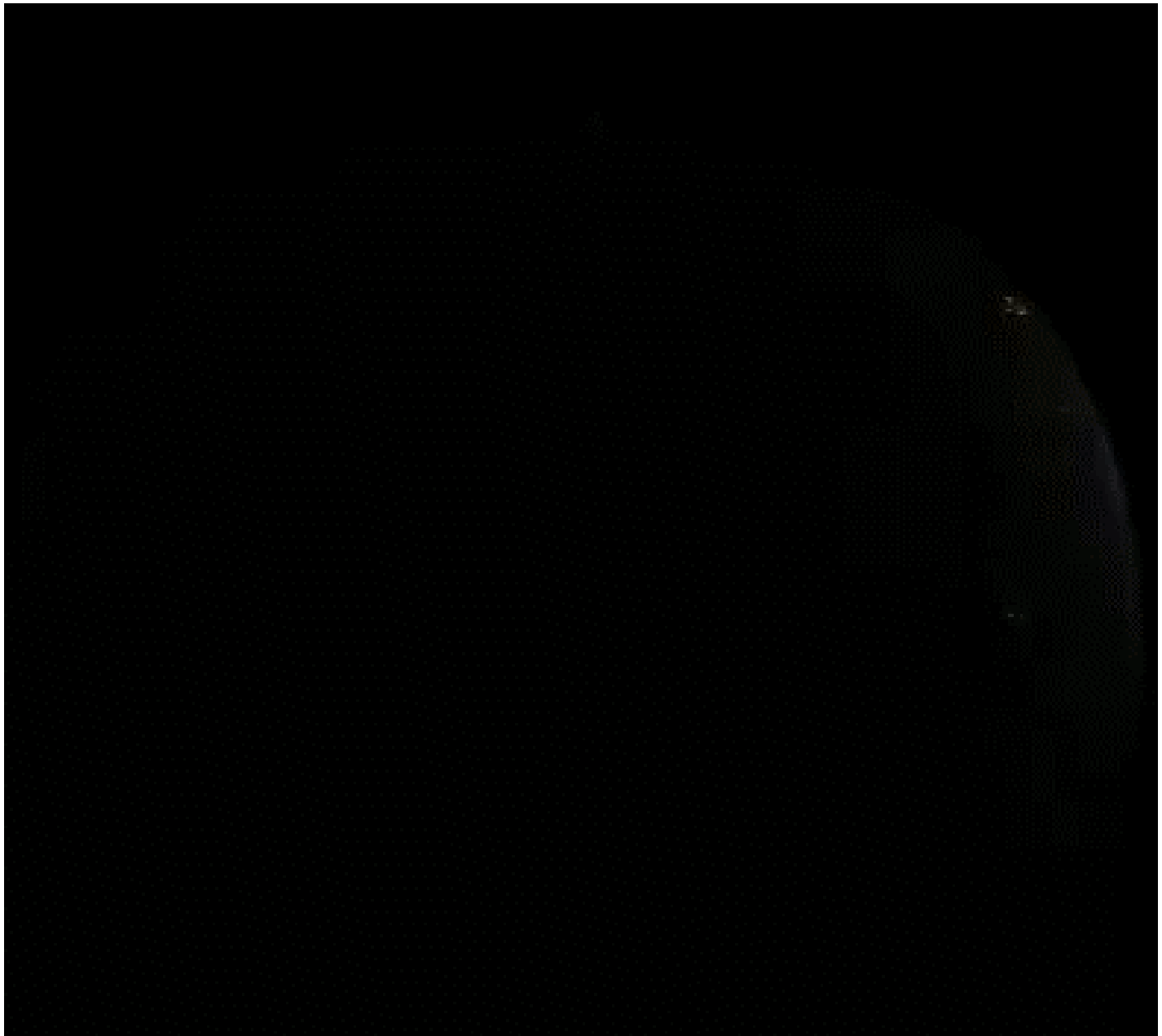




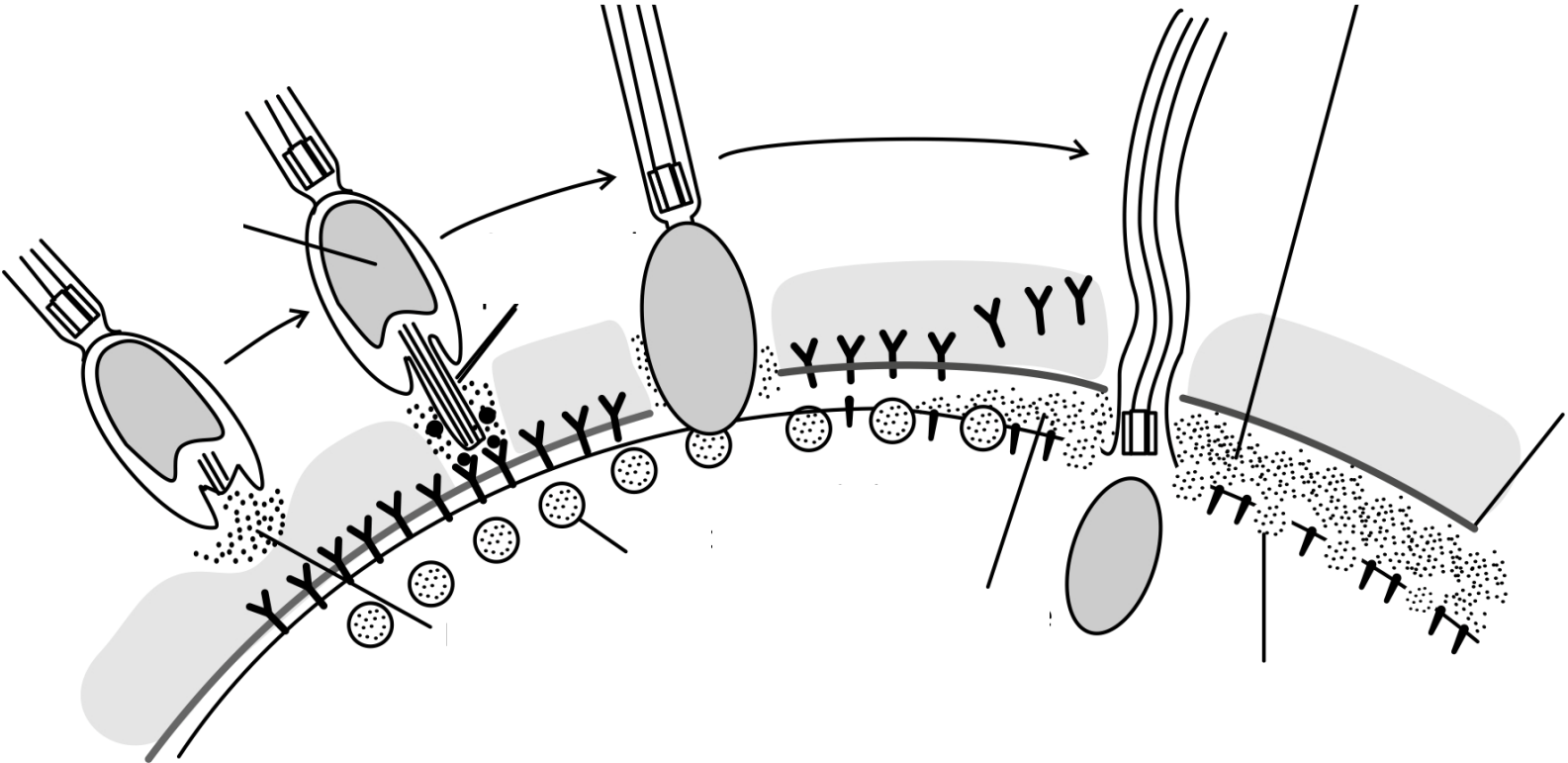








<https://www.youtube.com/watch?v=NXX578SYE4E>



**Cortical reaction.** Fusion of the gamete membranes triggers an increase of  $\text{Ca}^{+2}$  in the egg's cytosol, causing cortical granules in the egg to fuse with the plasma membrane and discharge their contents. This leads to swelling of the vitelline layer and clipping of sperm-binding receptors. The resulting **fertilization envelope** is the **slow block to polyspermy**.

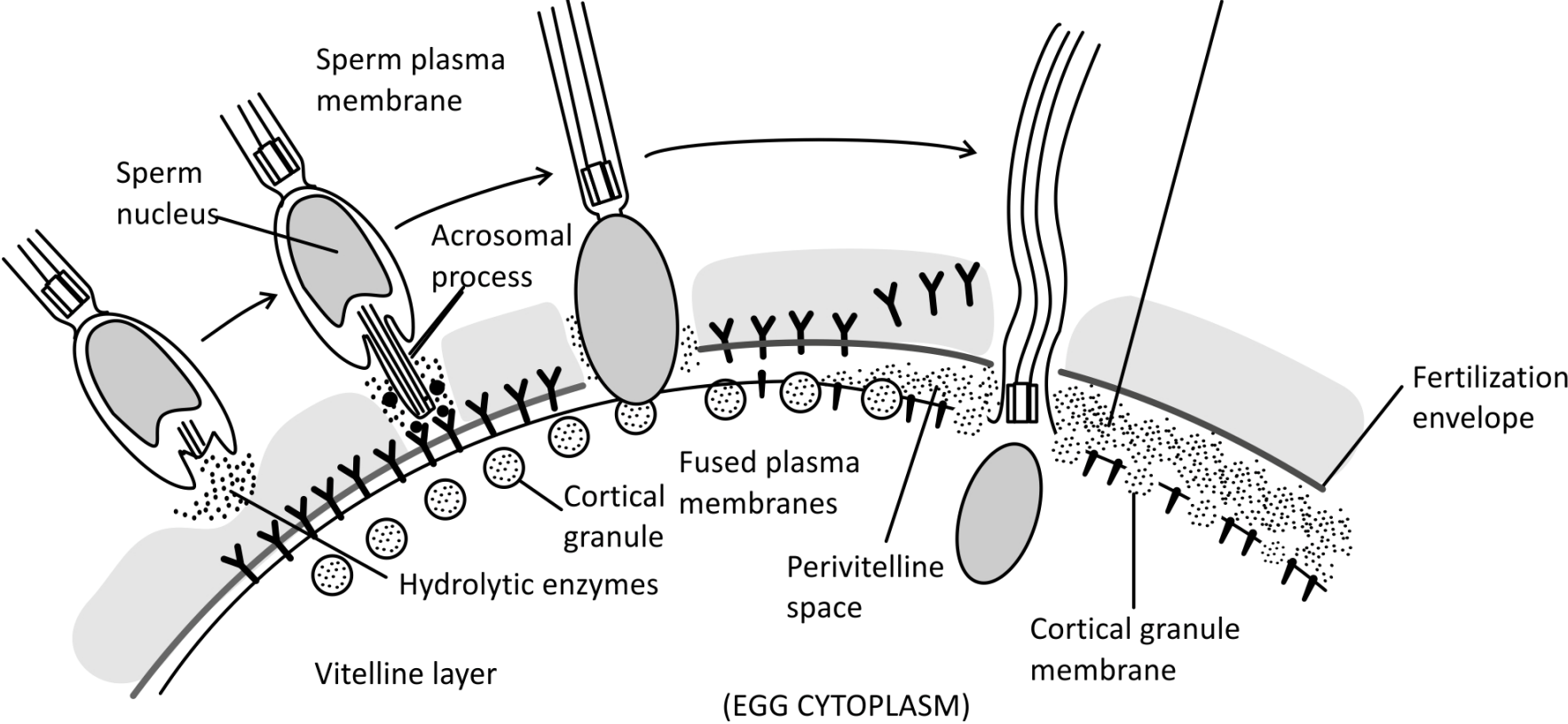
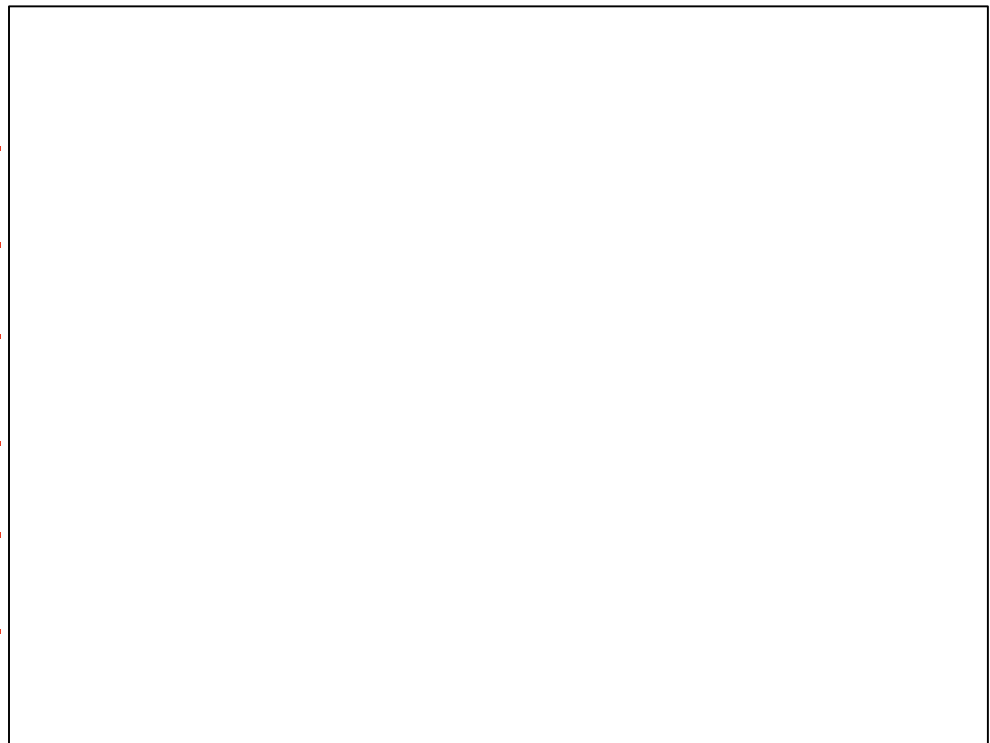
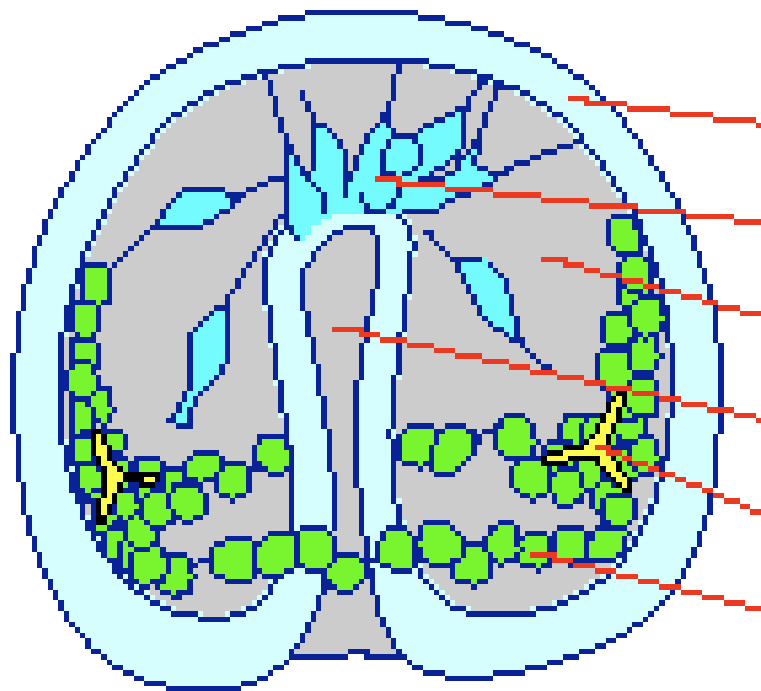
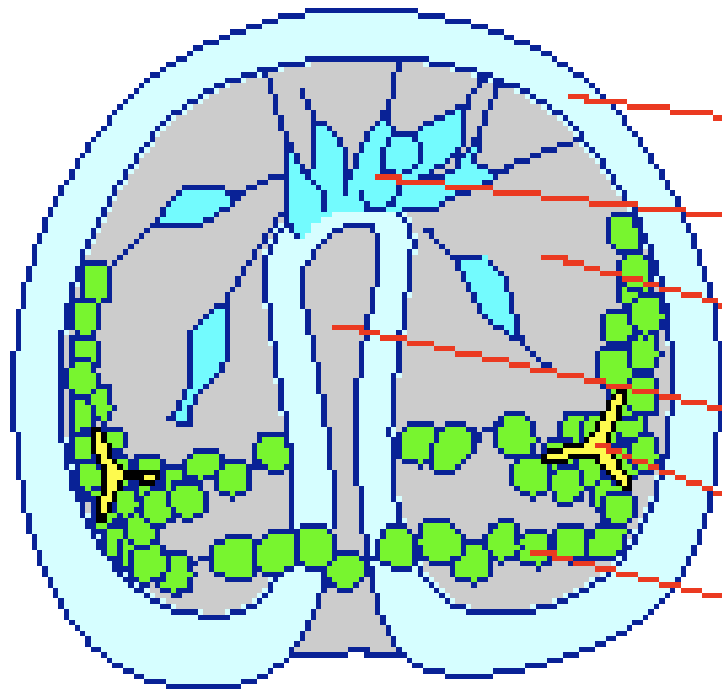


Fig. : Cortical granule reaction





Ectoderm

Secondary Mesenchyme Cells

Blastocoel

Archenteron

Skeleton

Primary Mesenchyme Cells