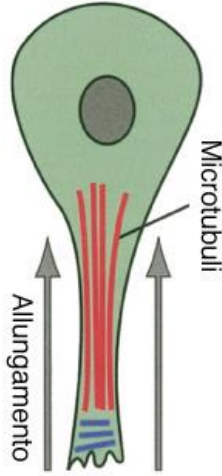


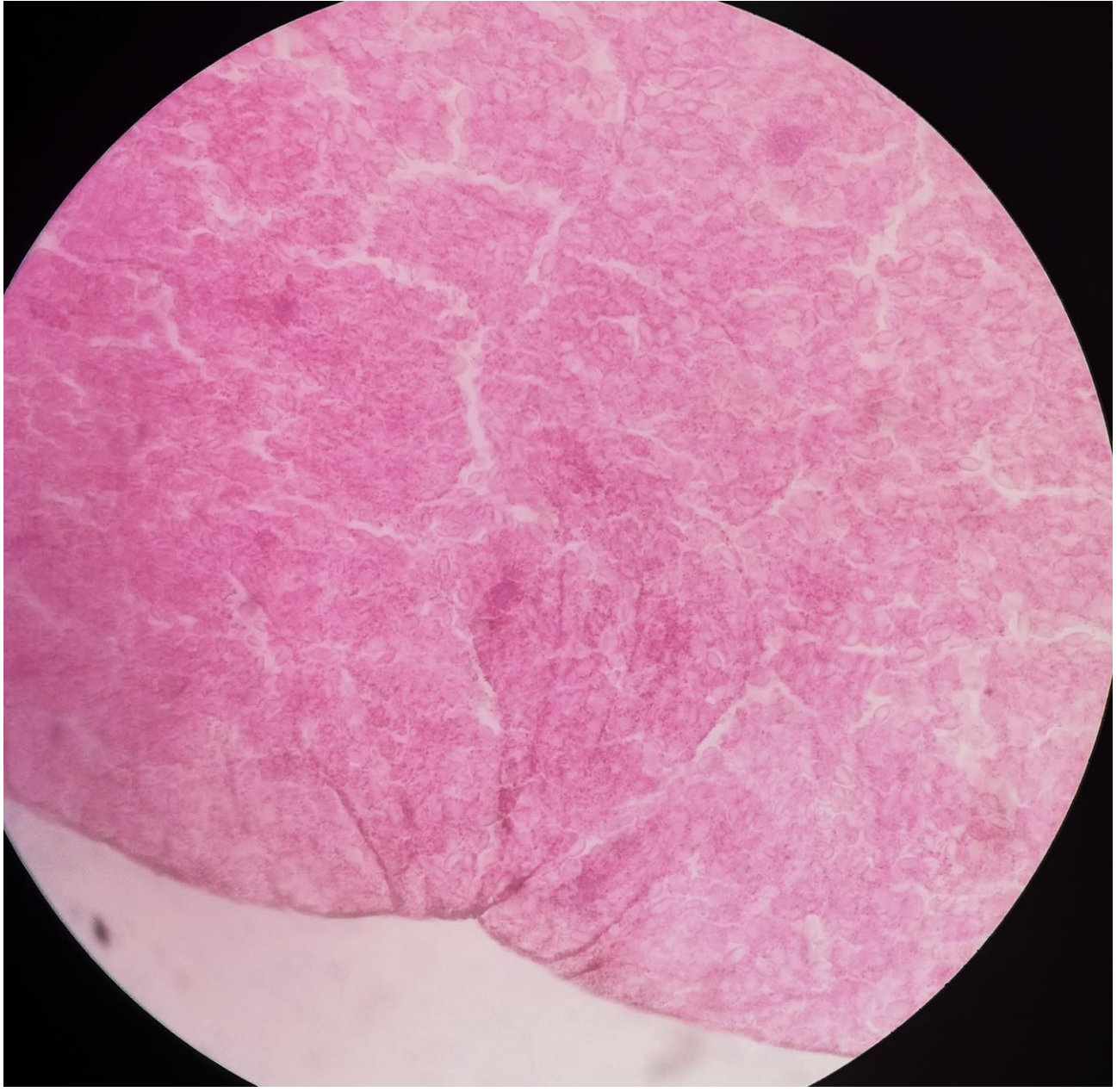
Microfilamenti di actina

Costrizione
apicale

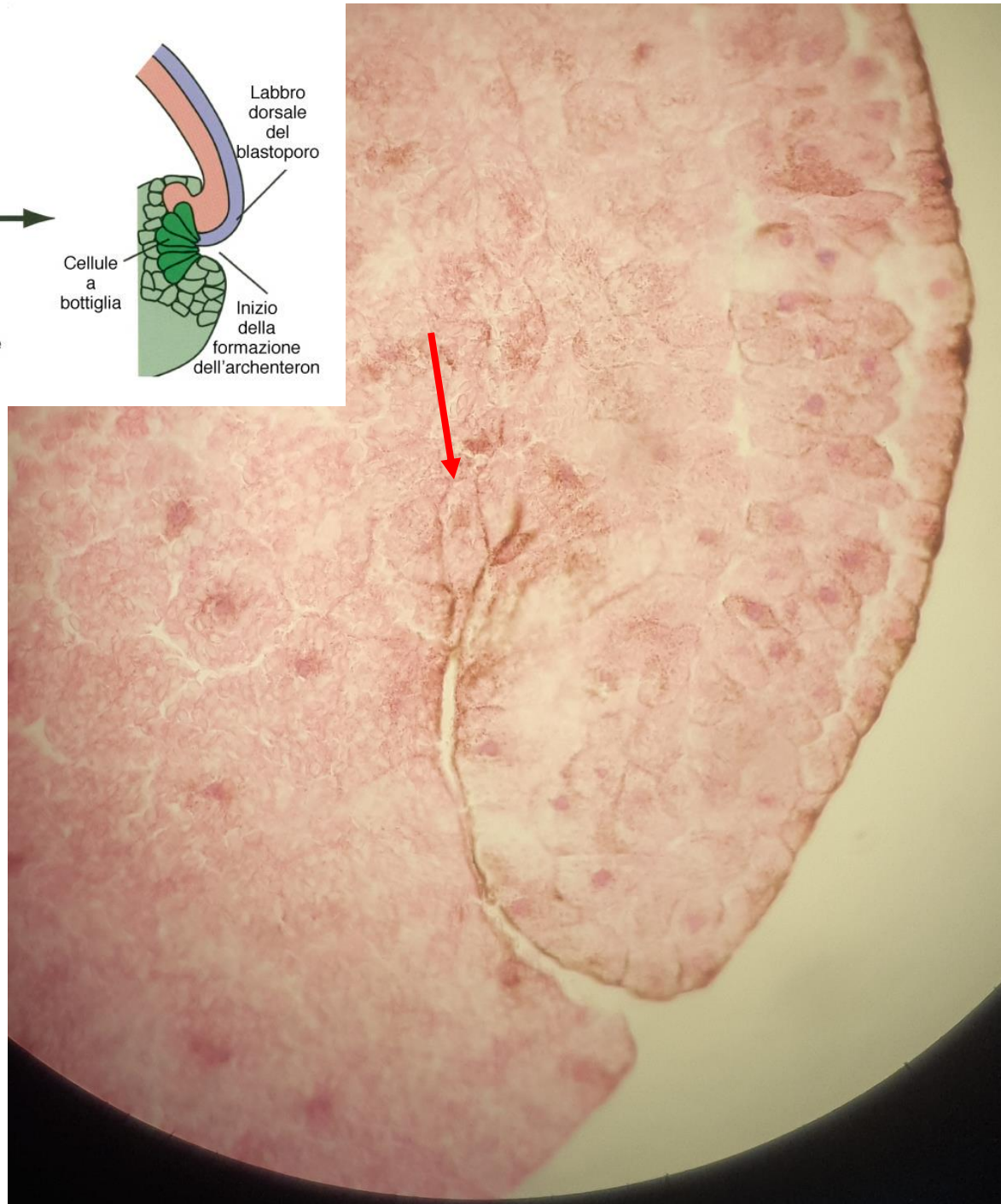
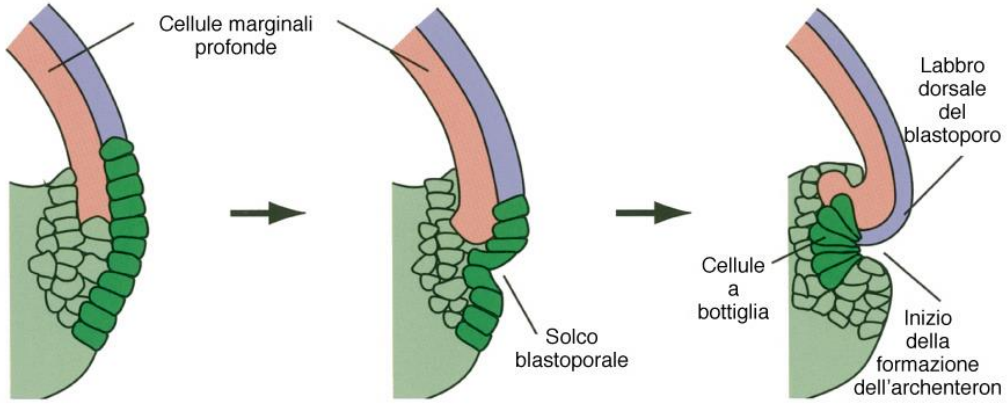


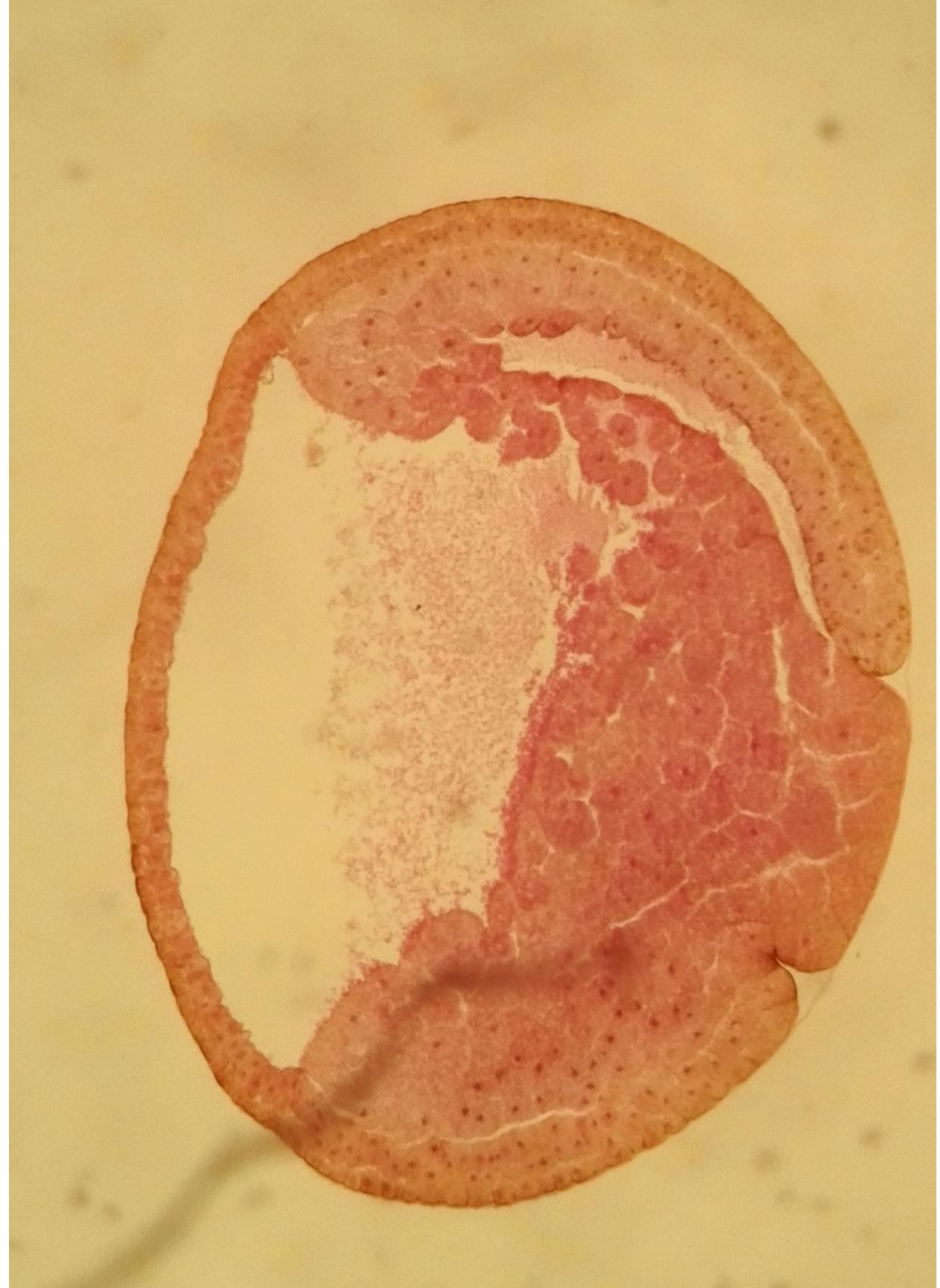
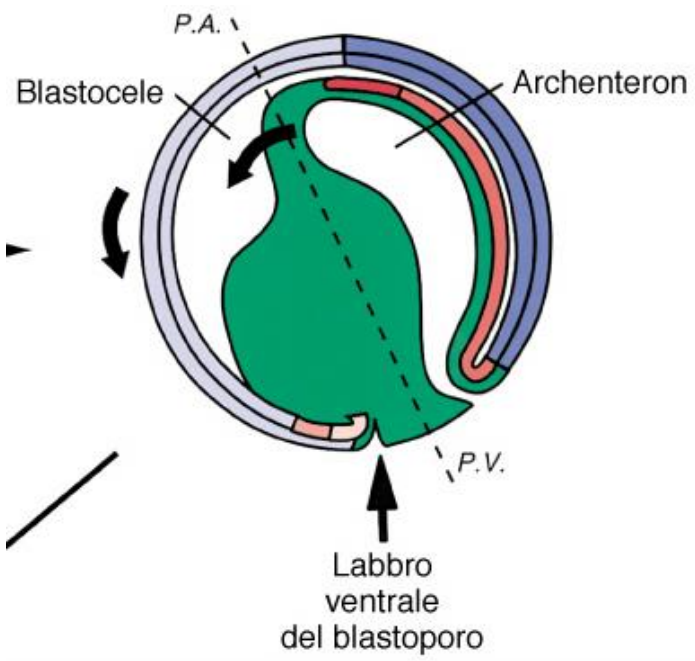
Microtubuli

Allungamento



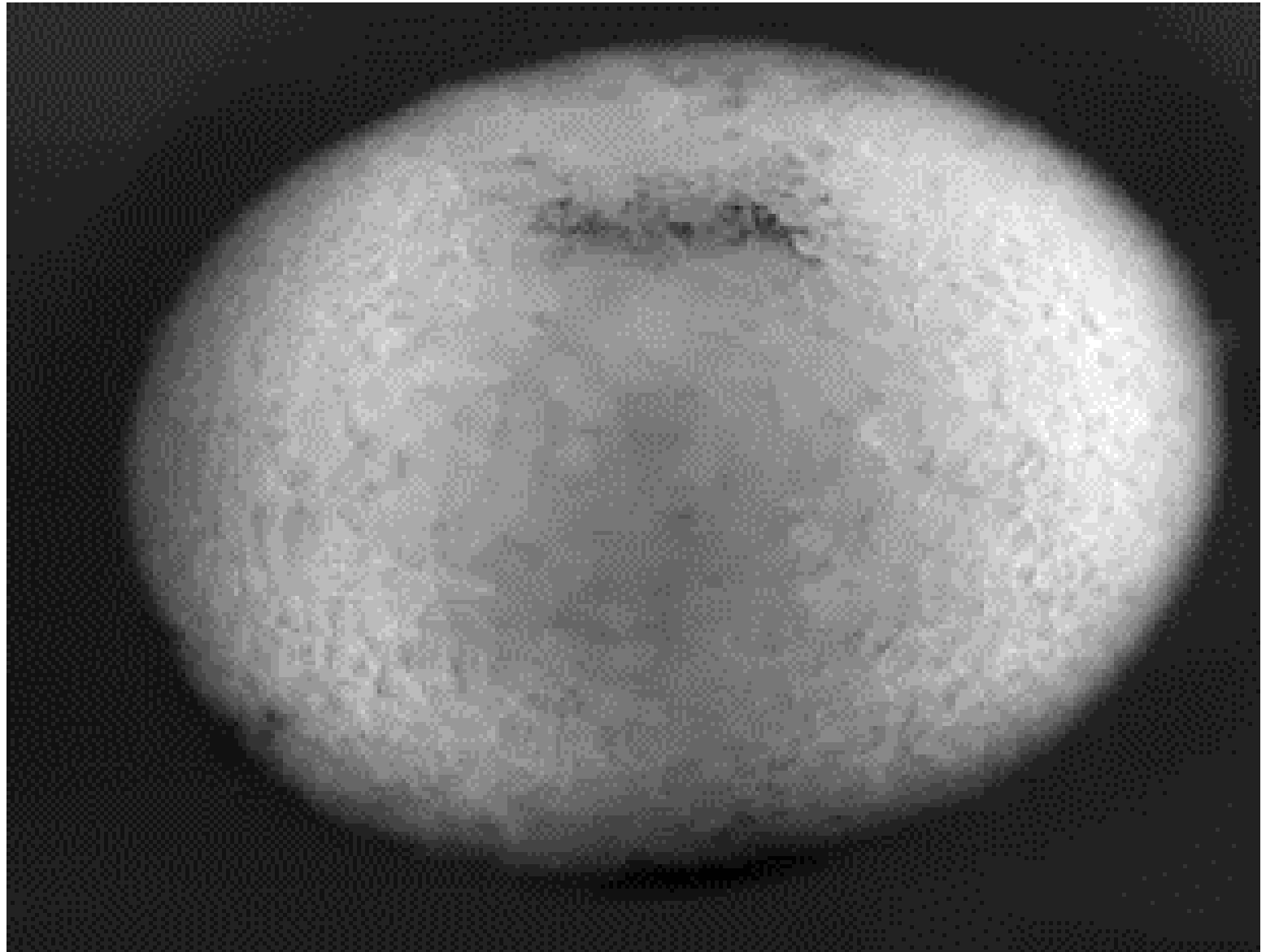
c) Schema di formazione dell'archenteron



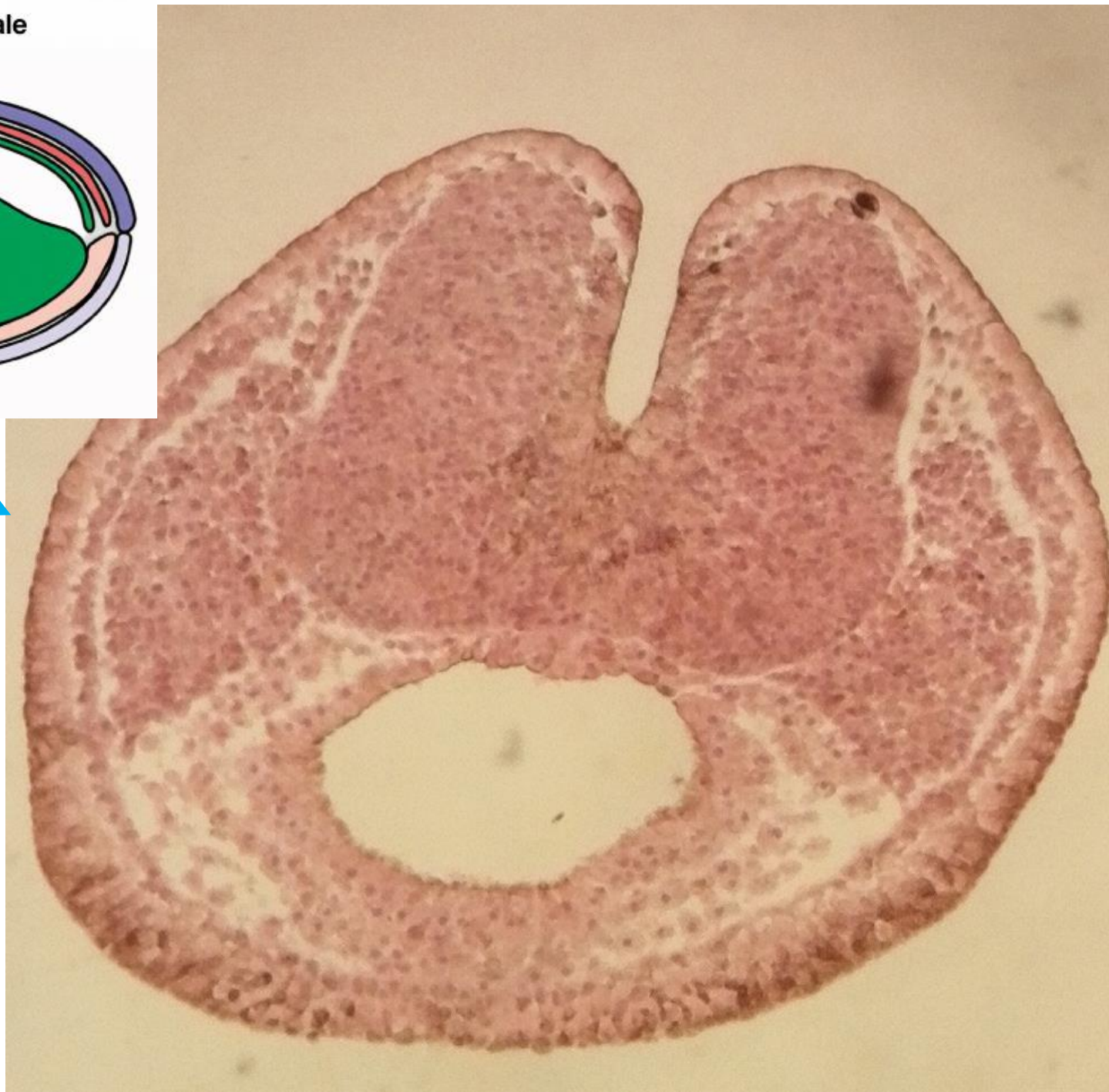
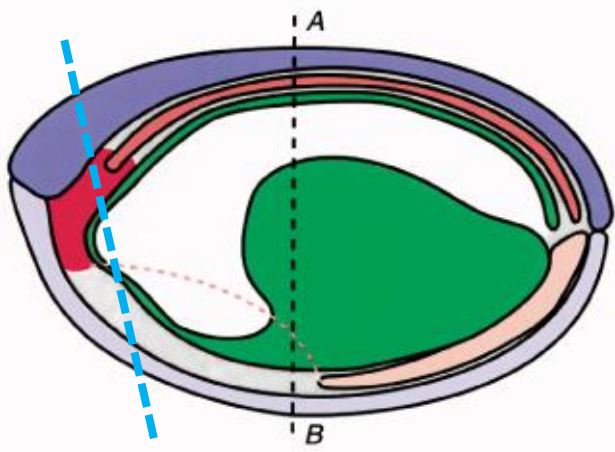




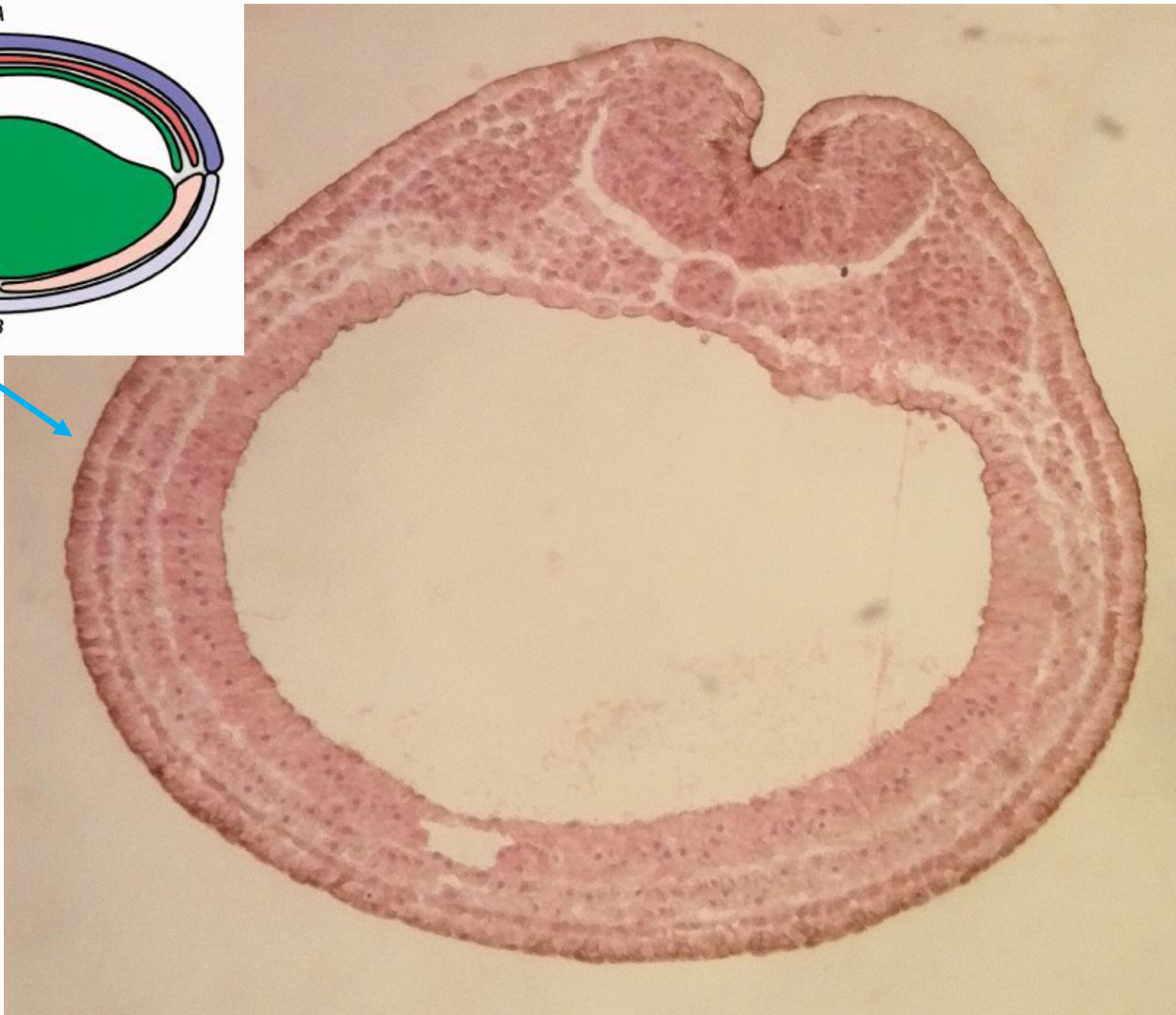
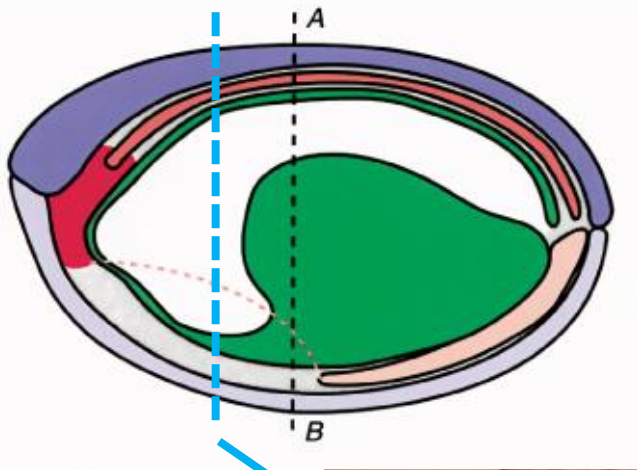




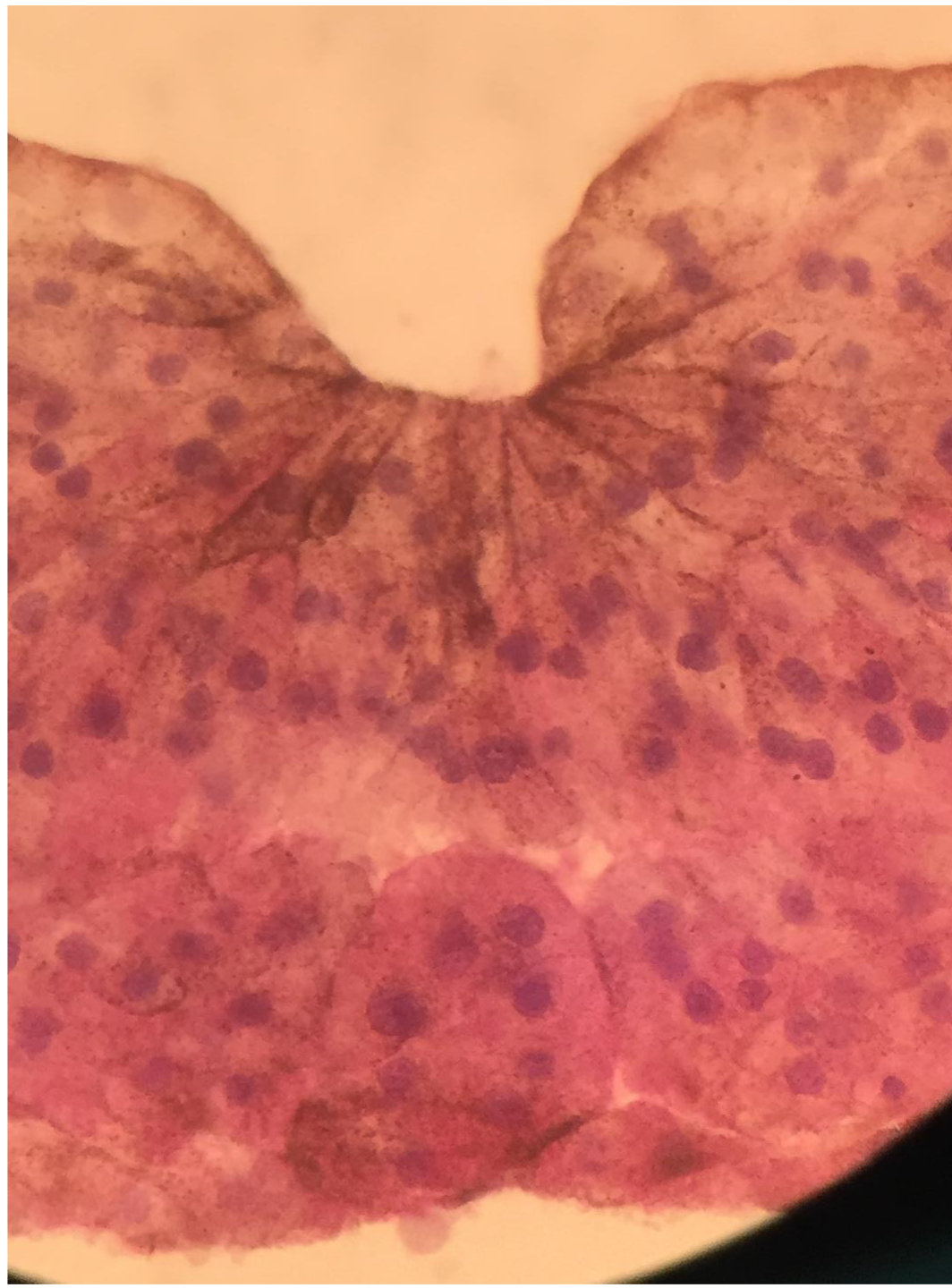
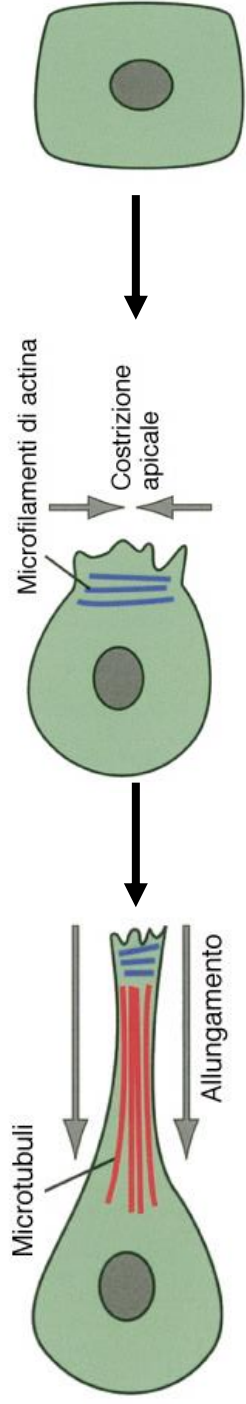
b) Stadio di doccia neurale



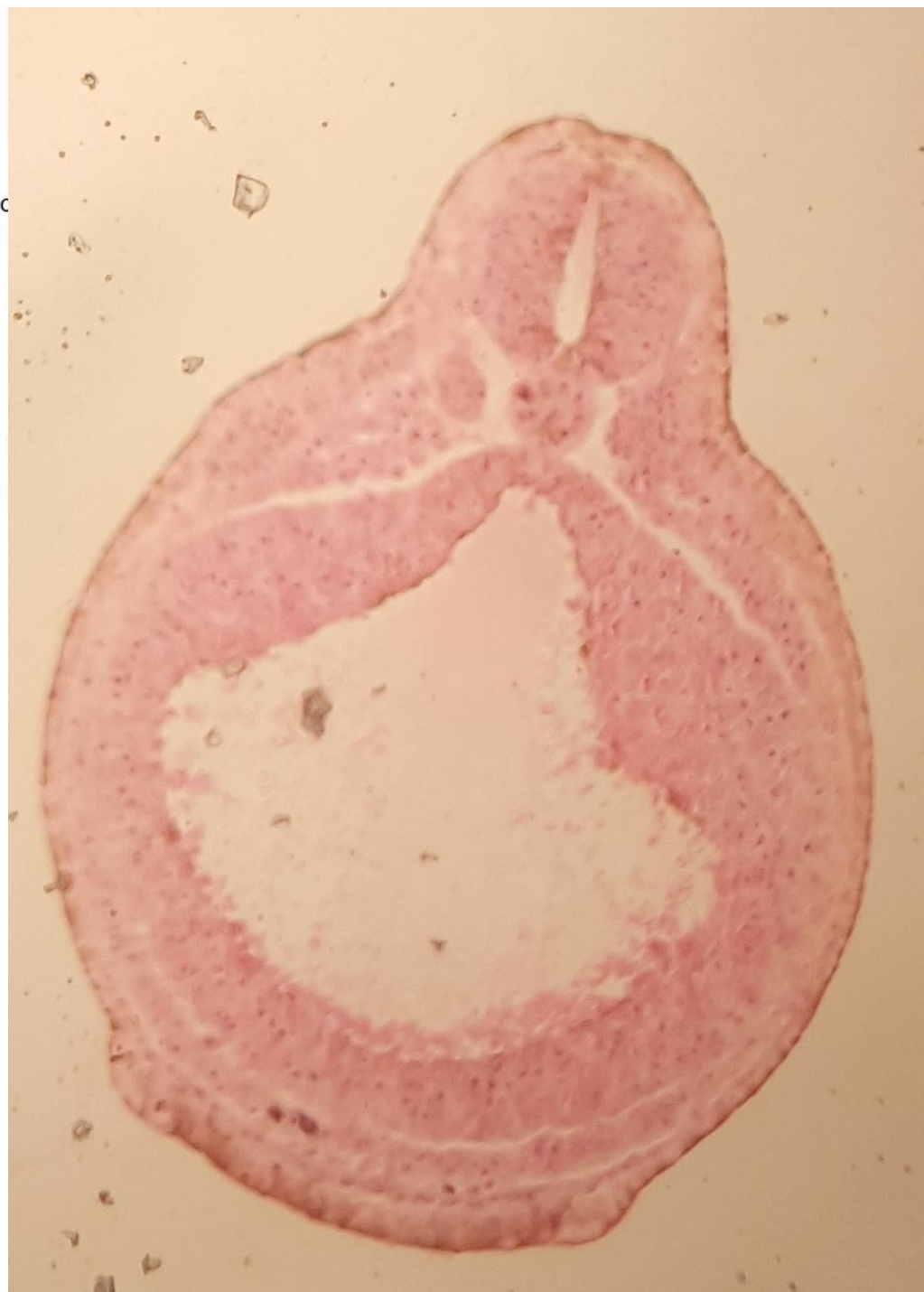
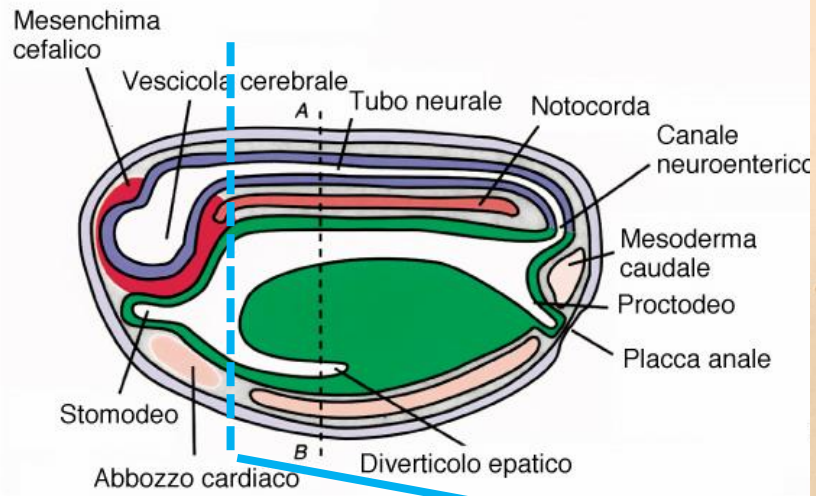
b) Stadio di doccia neurale



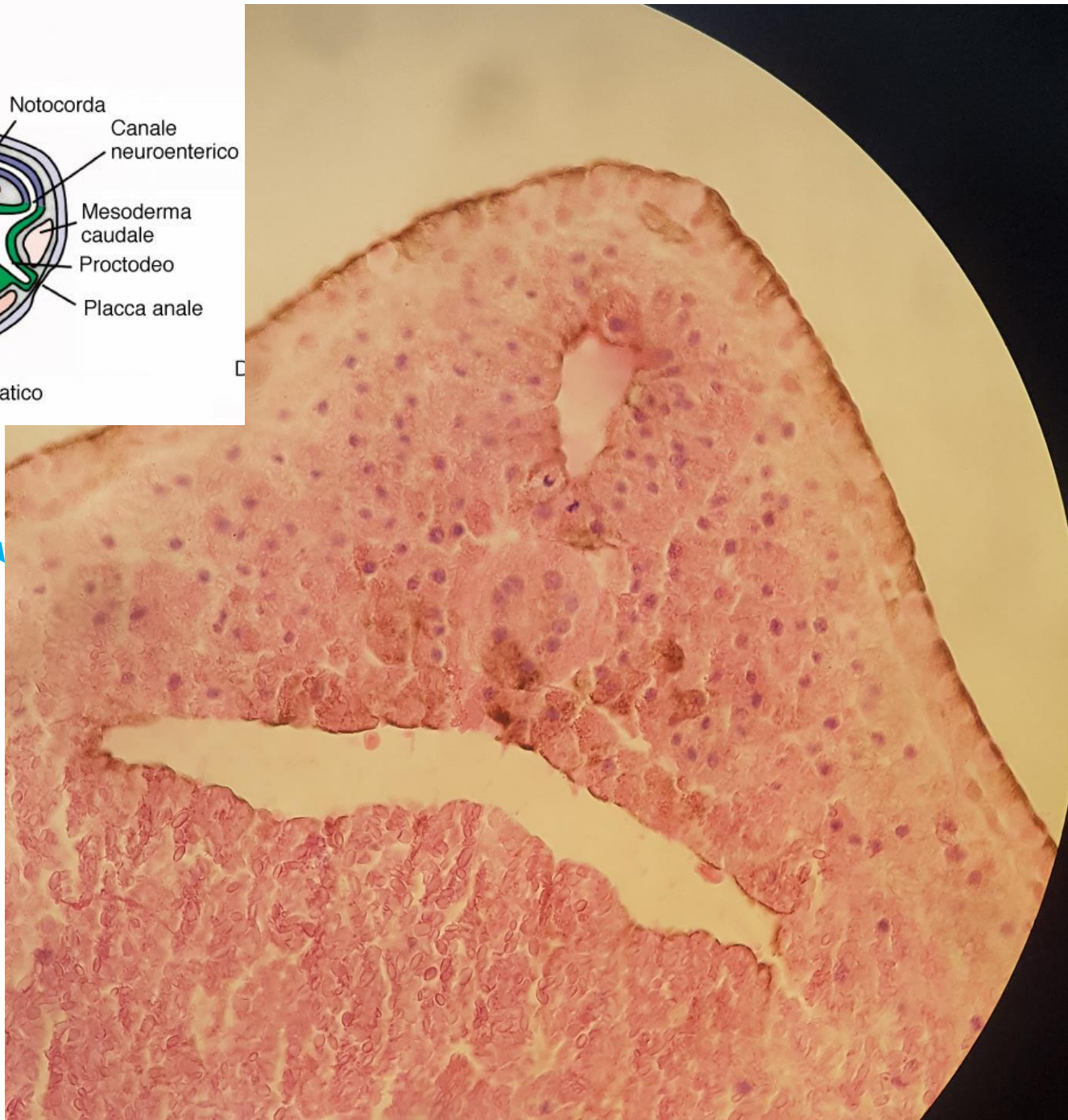
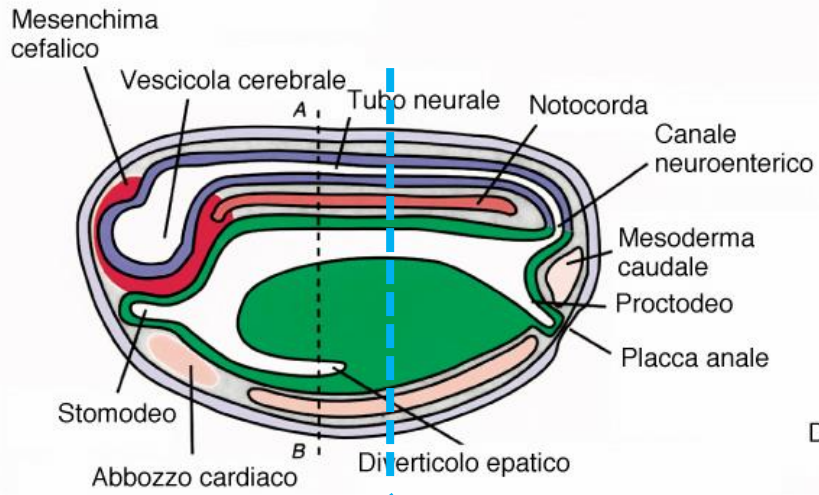


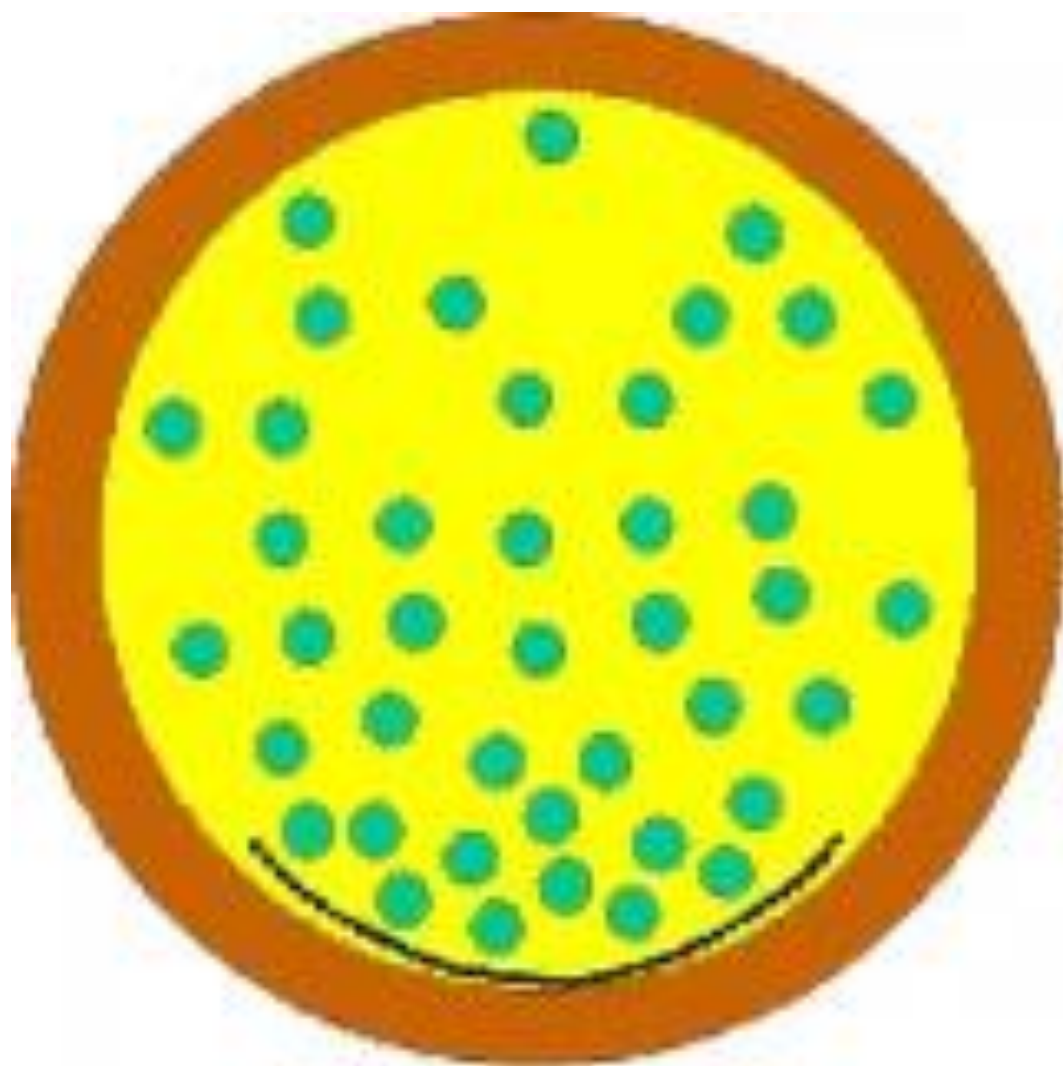


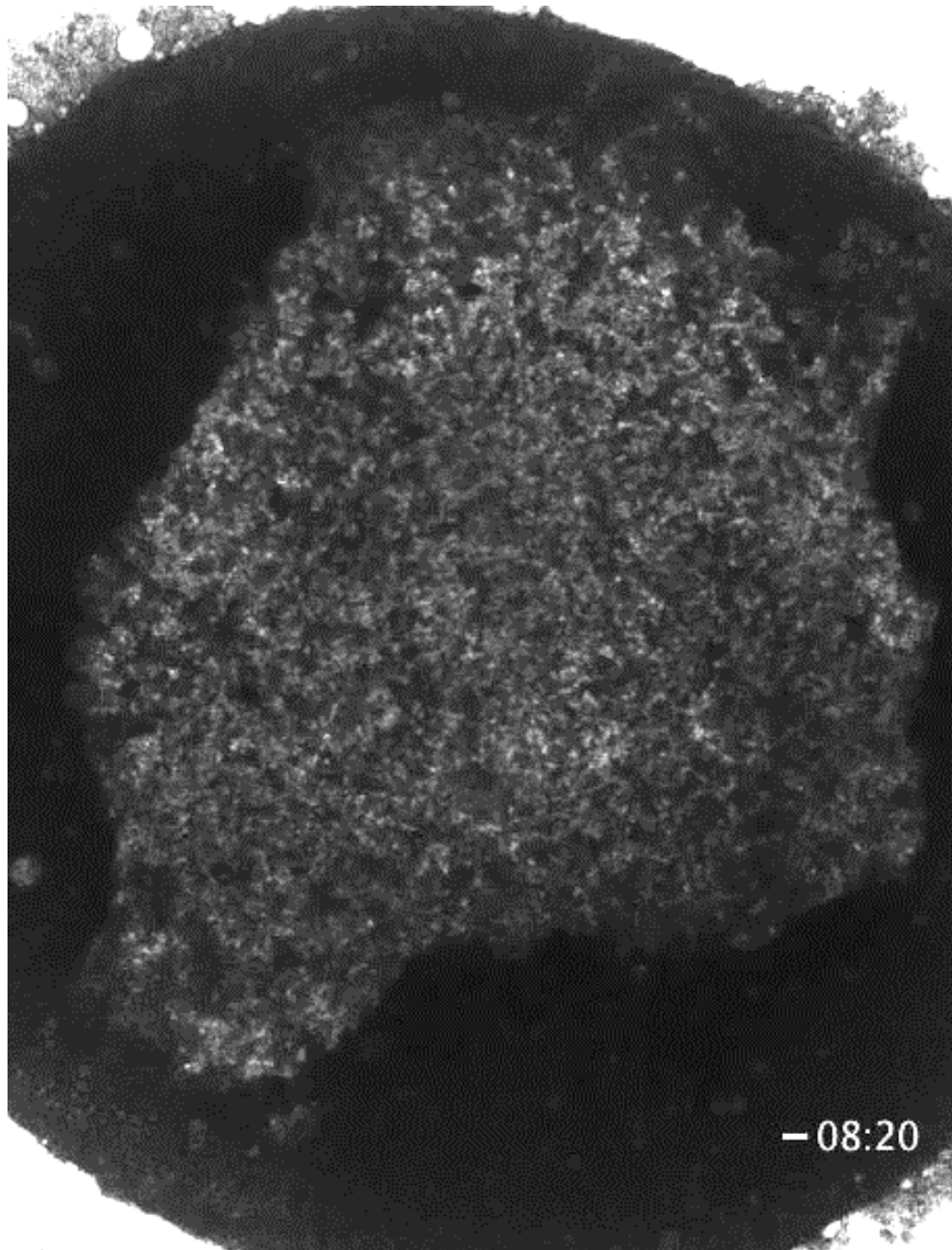
c) Stadio di tubo neurale

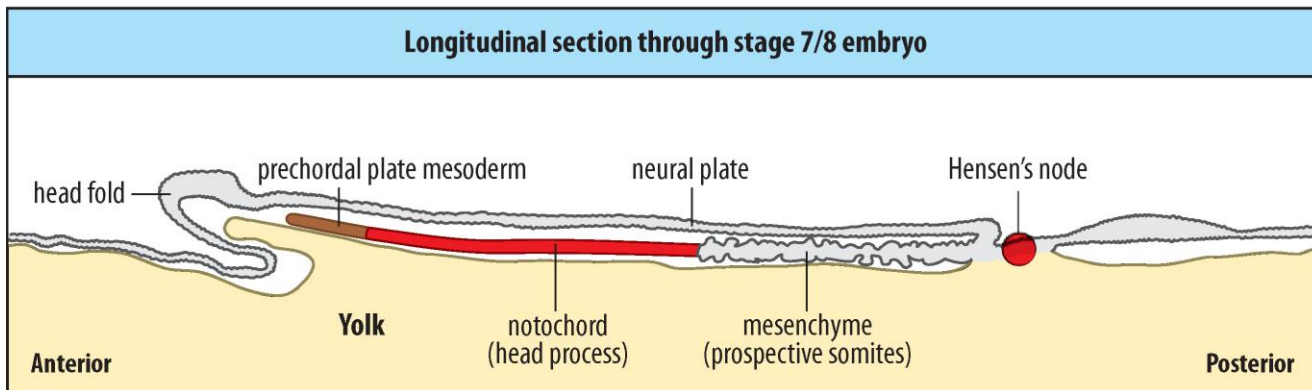
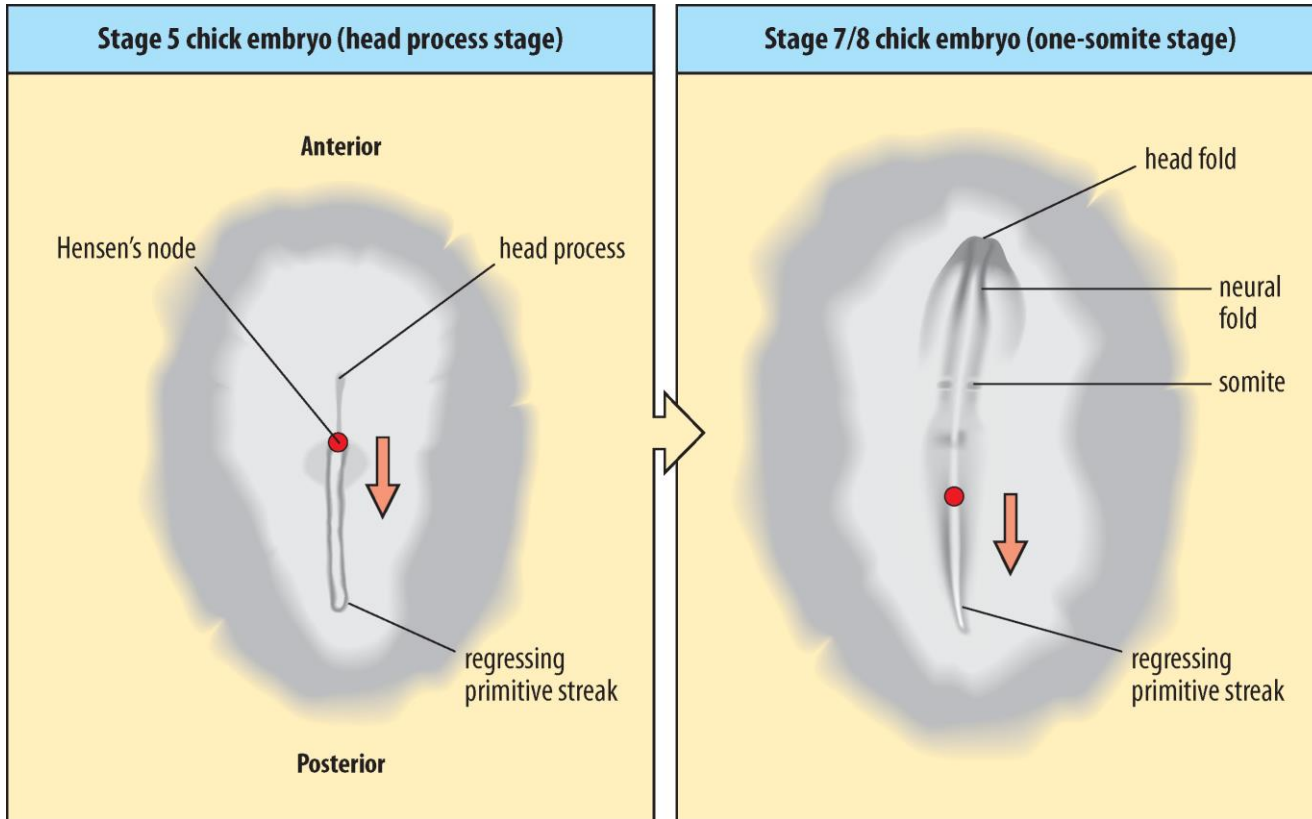


c) Stadio di tubo neurale





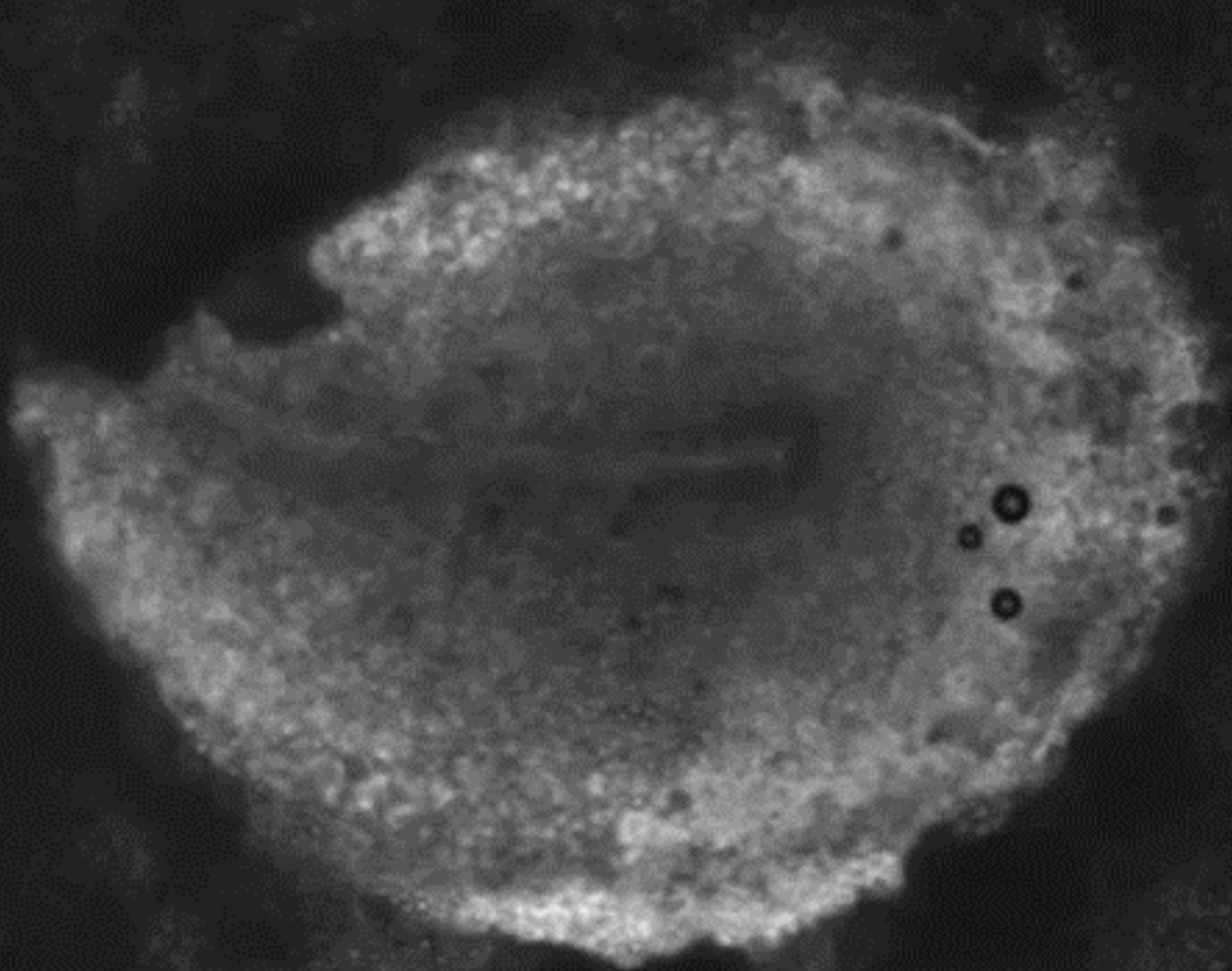




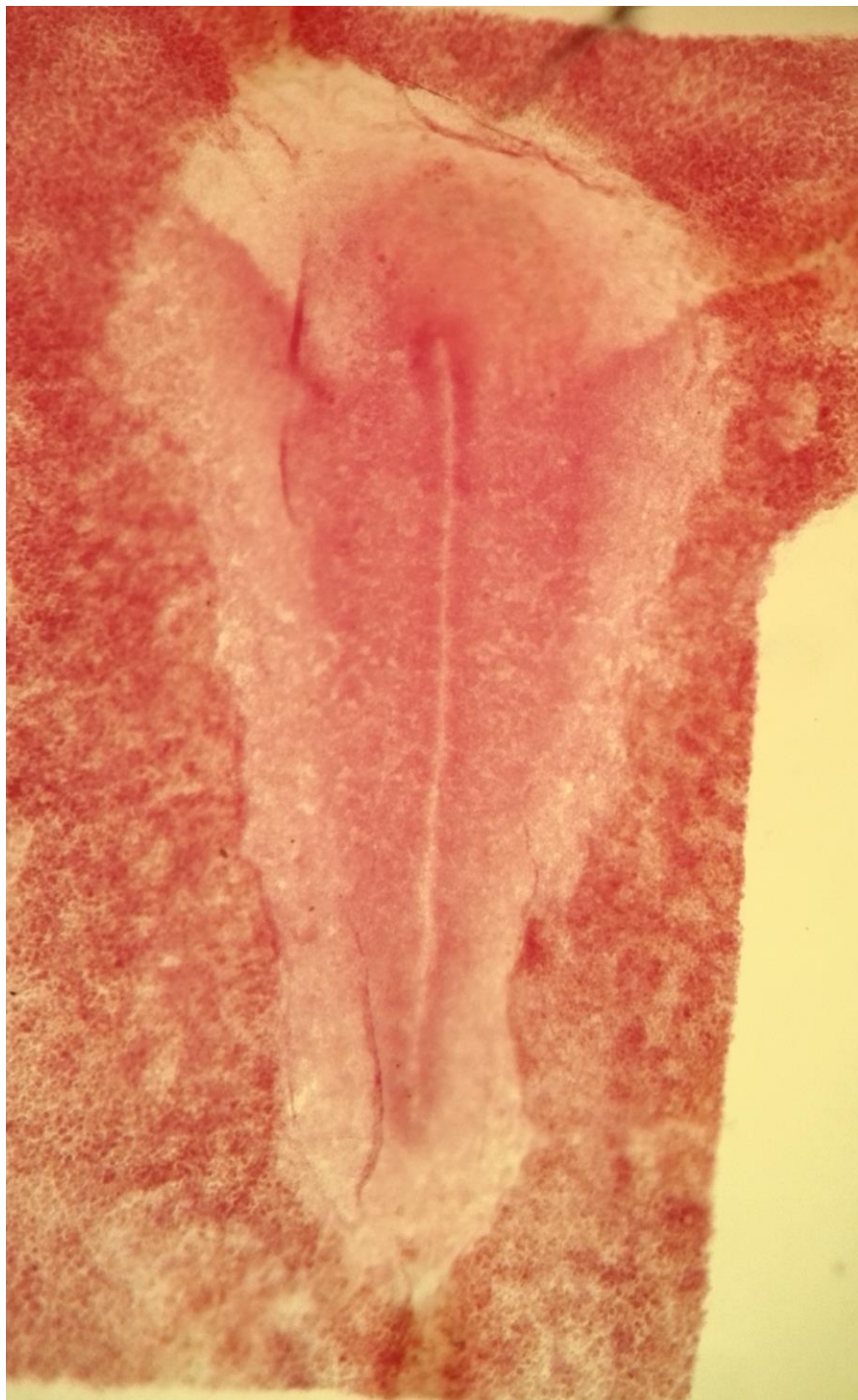
Chicken Embryo - Somitogenesis

00:00:00

Dias AS, de Almeida I, Belmonte JM, Glazier JA, Stern CD.
Science. 2014 Feb 14;343(6172):791-5



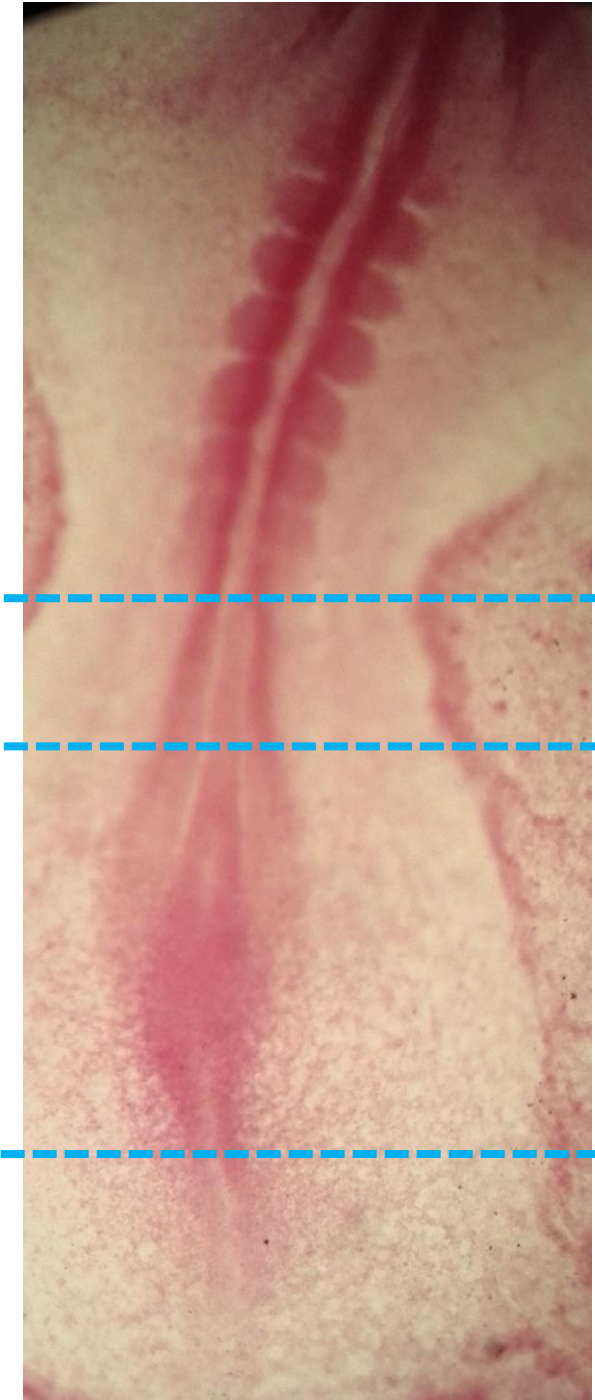
PMID: 24407478





1

2



3

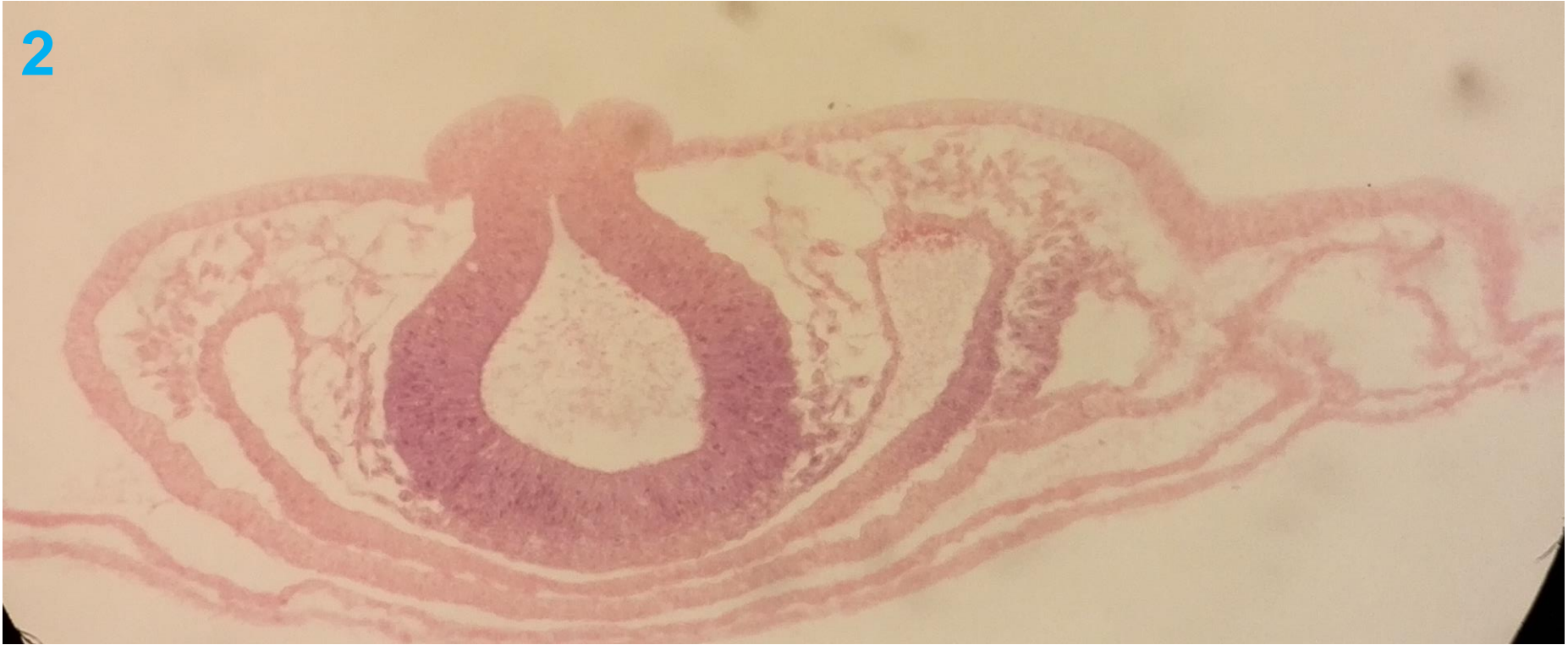
4

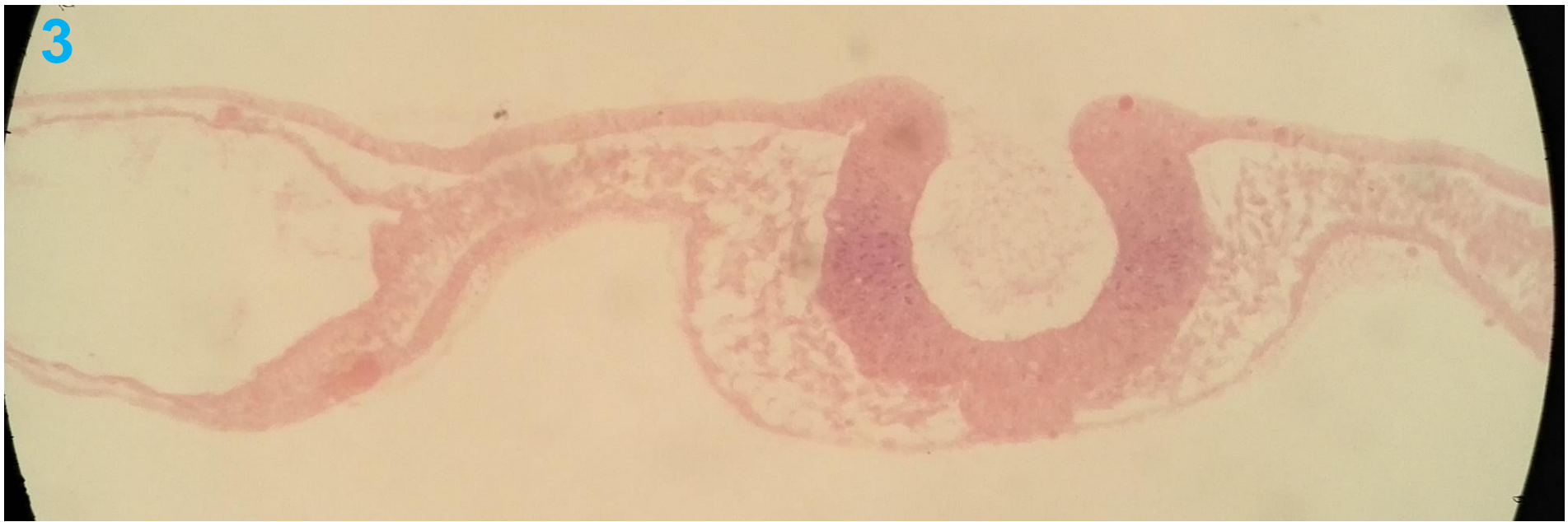
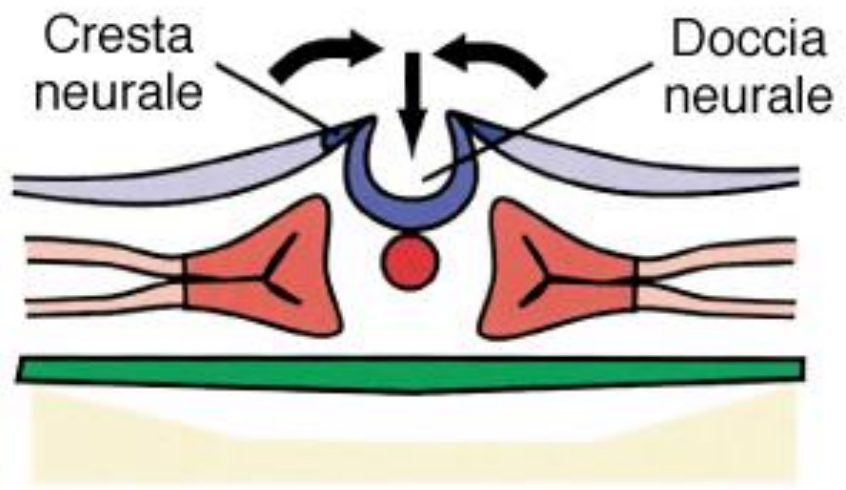
5

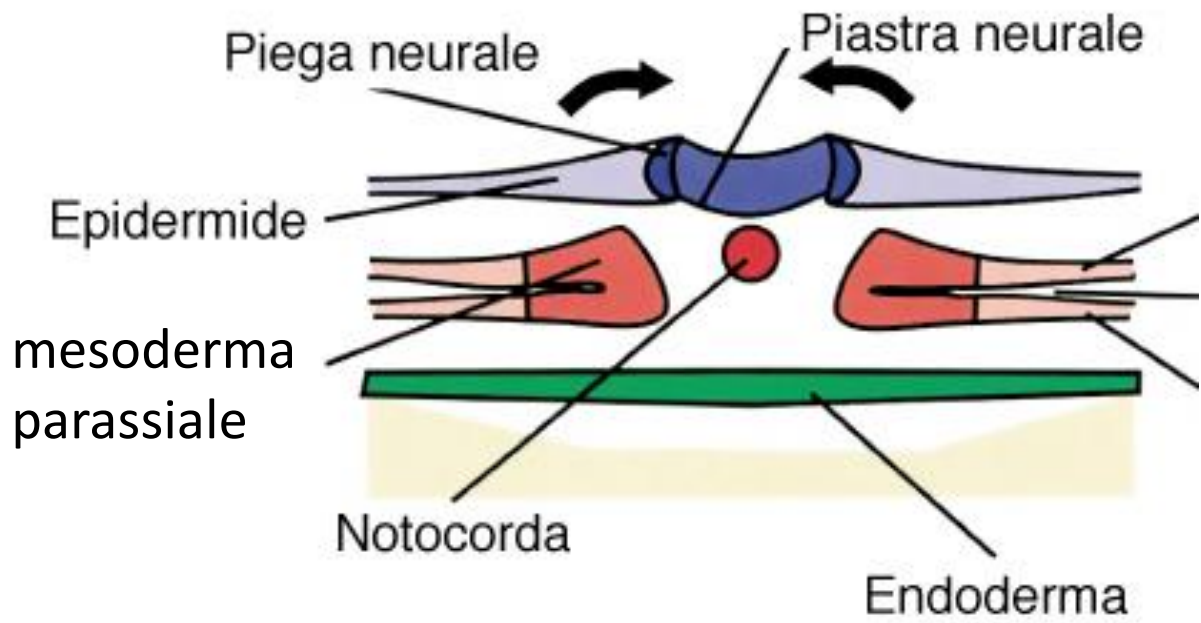
1



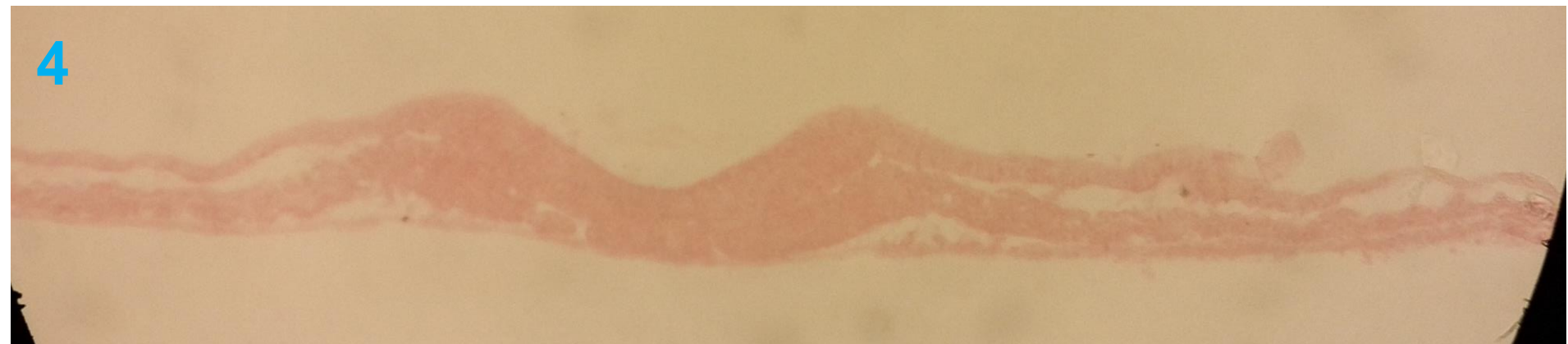
2





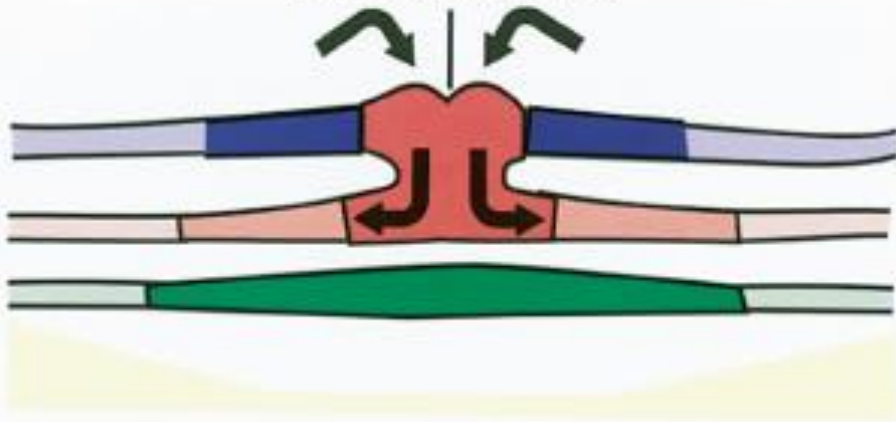


4

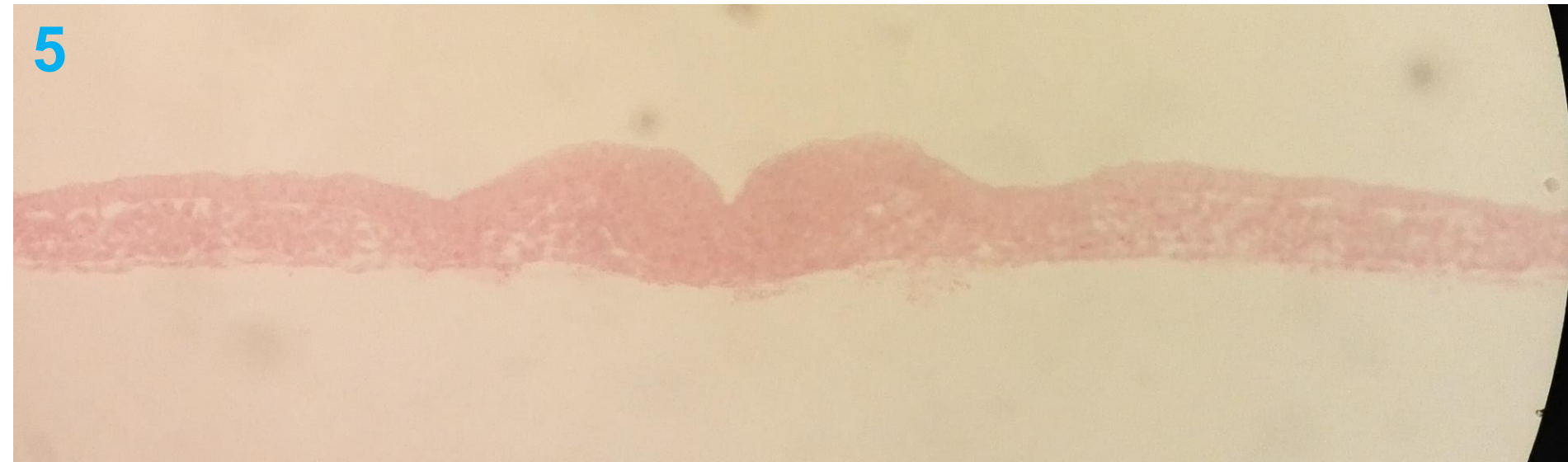


Sezione trasversale del tronco

Linea primitiva



5



1

2

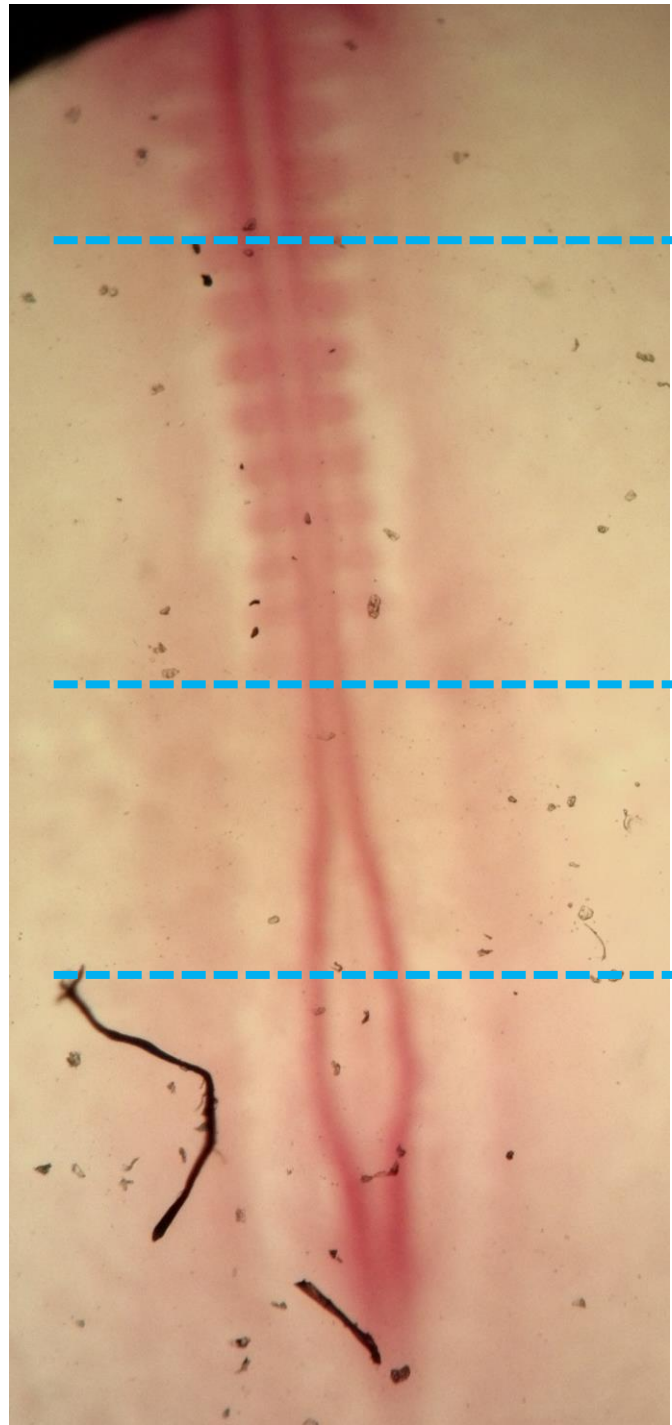
3



4

5

6



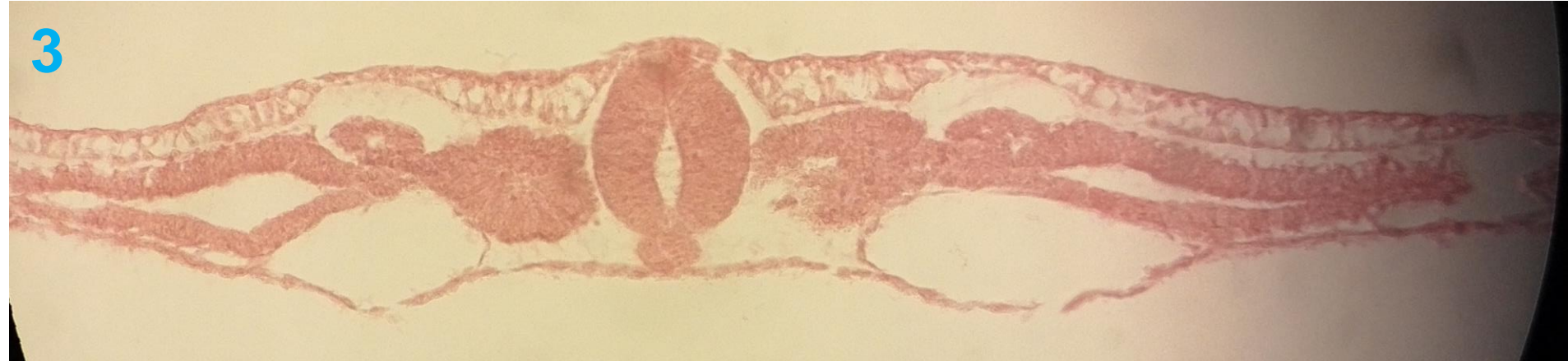
1

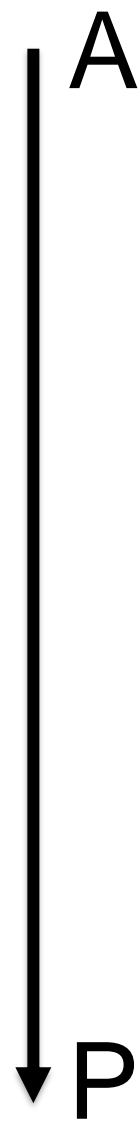
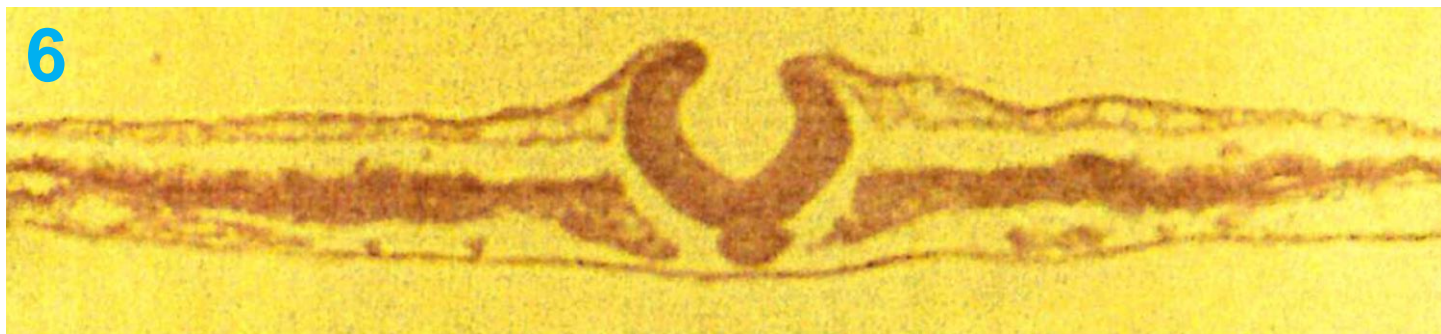
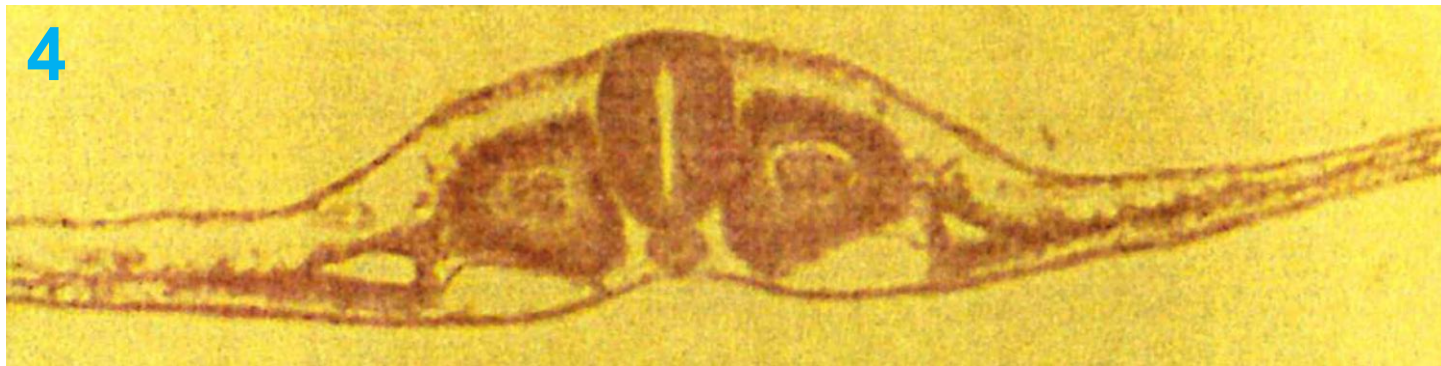


2



3







Chick gastrulation

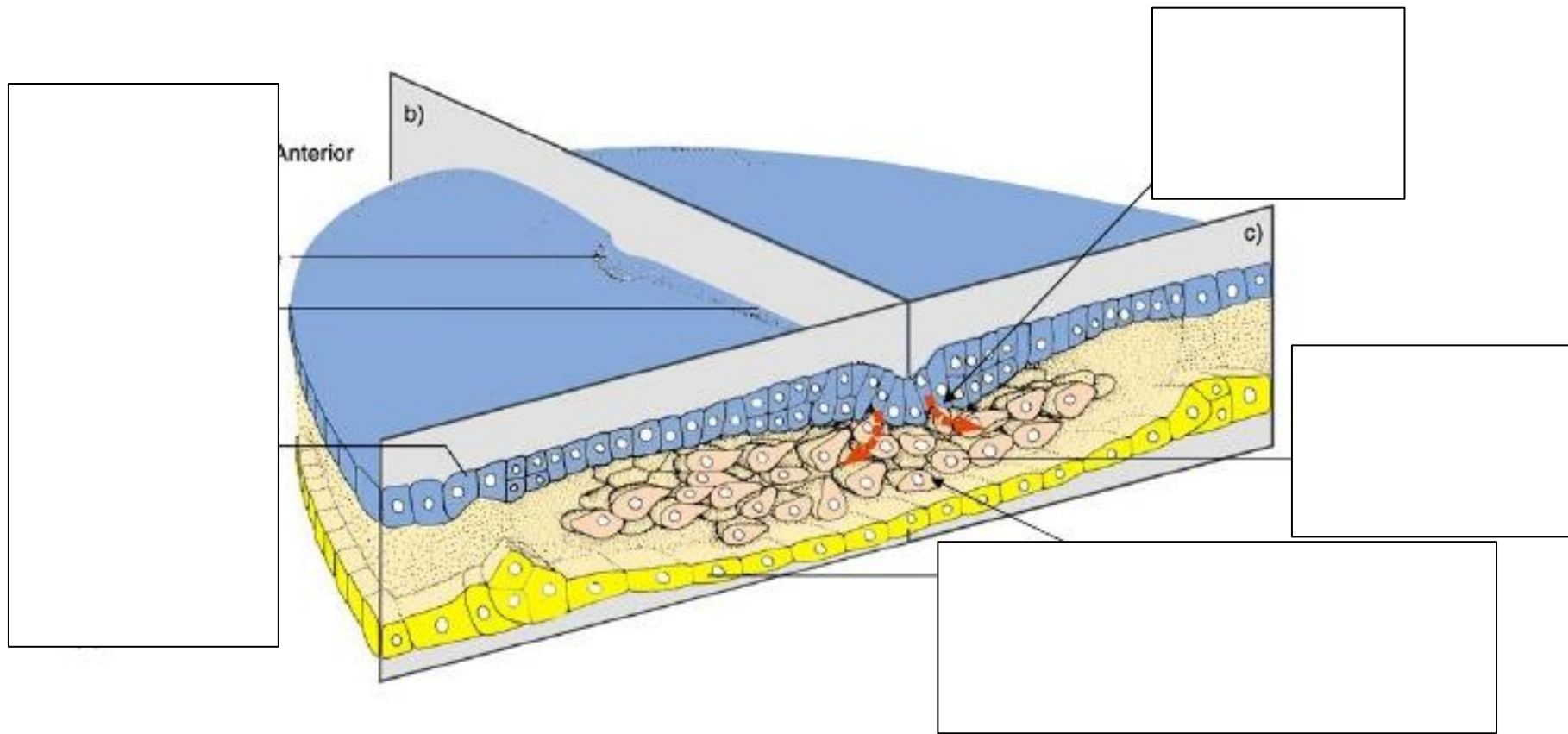


Figure 10.24

Chick gastrulation

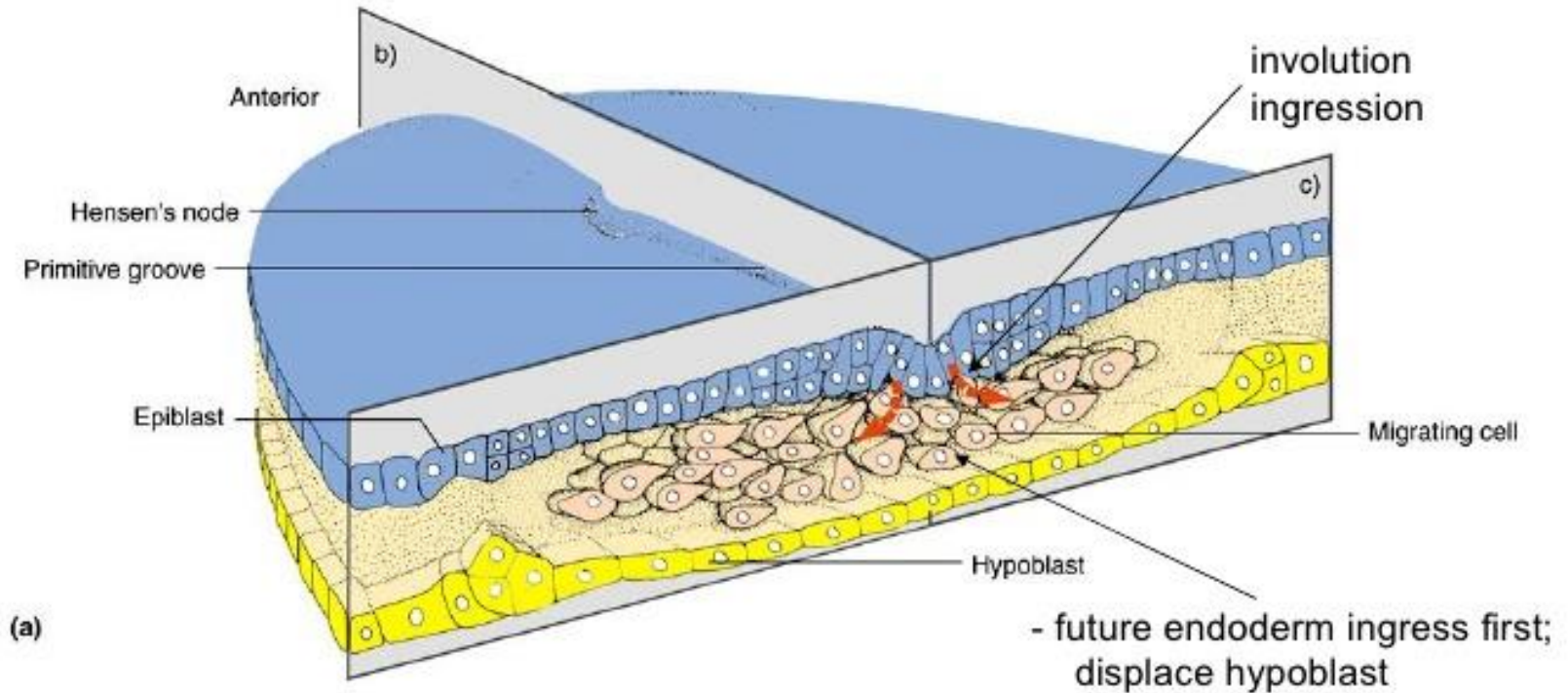
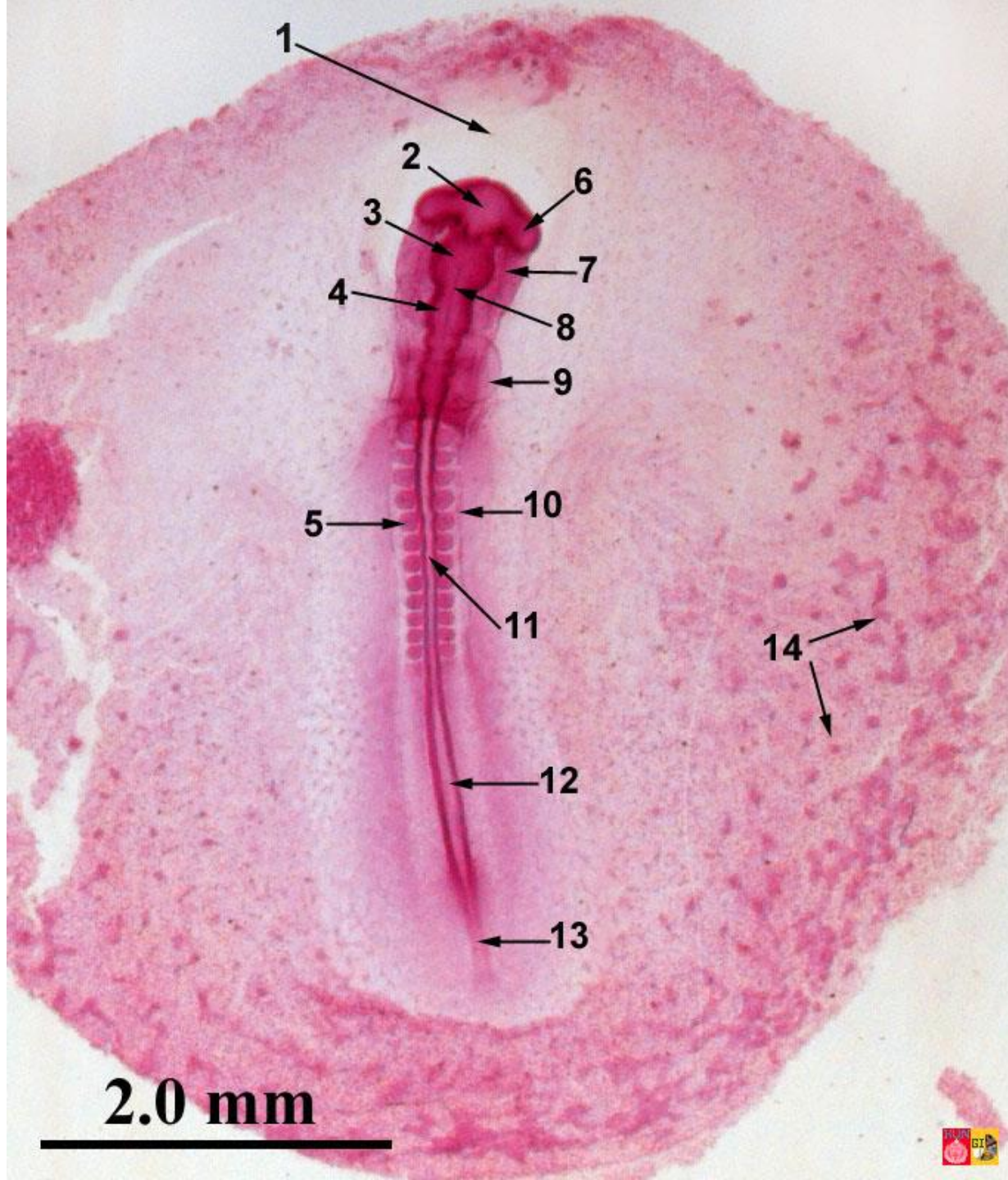
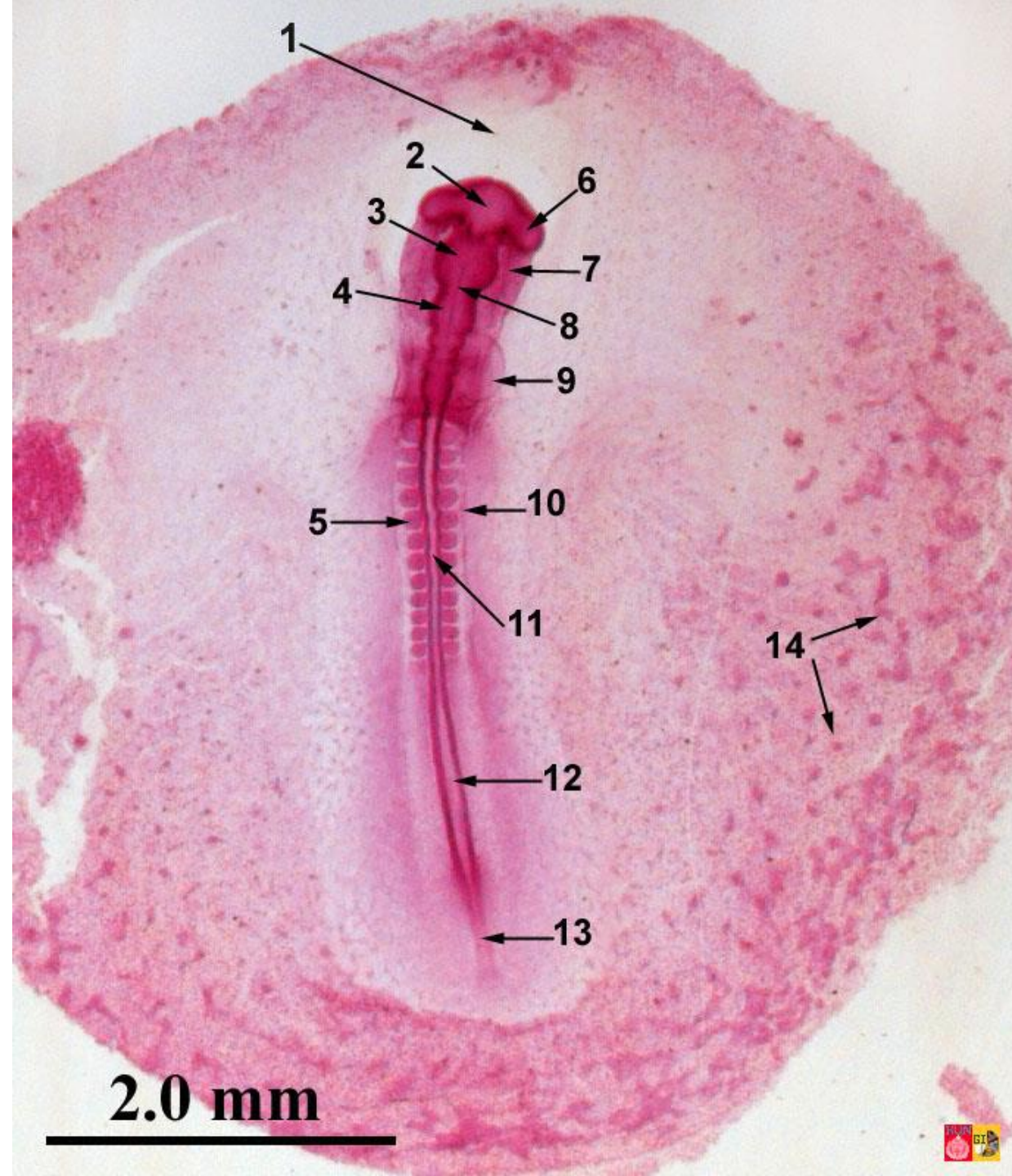


Figure 10.24



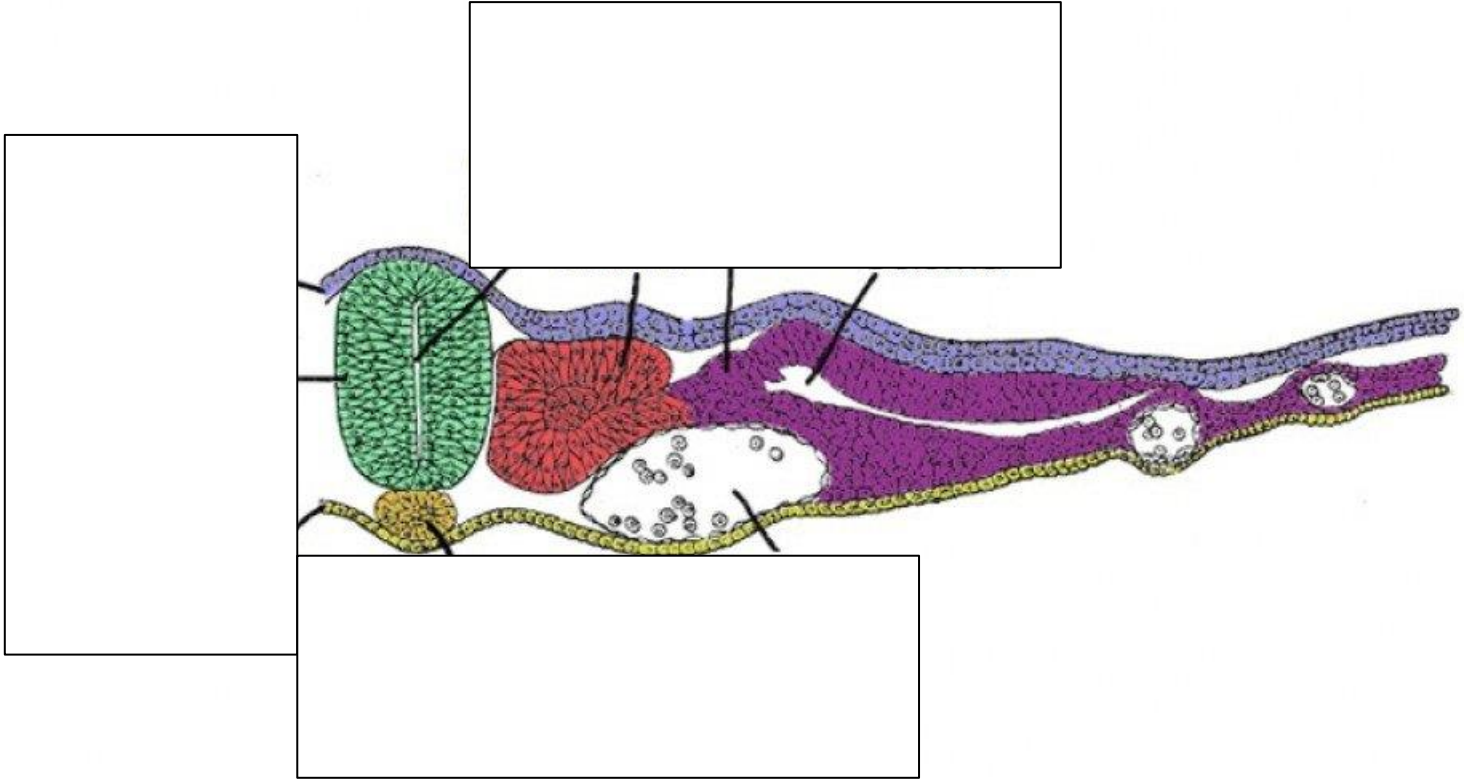


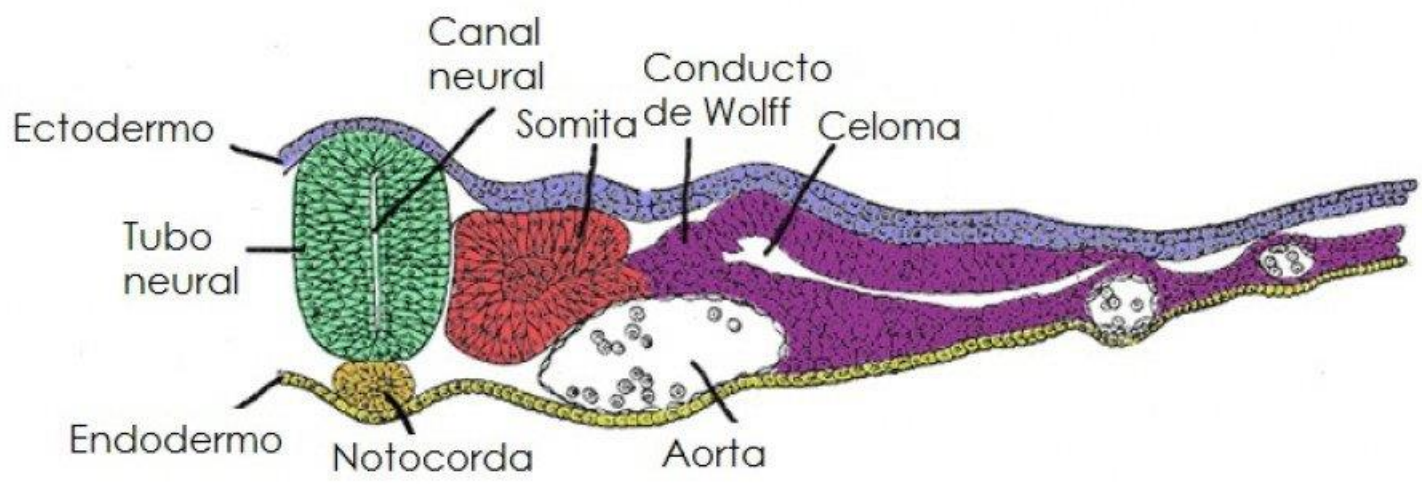
**Embryology of chicken 33 hours after fertilization:
stained whole mount preparation**

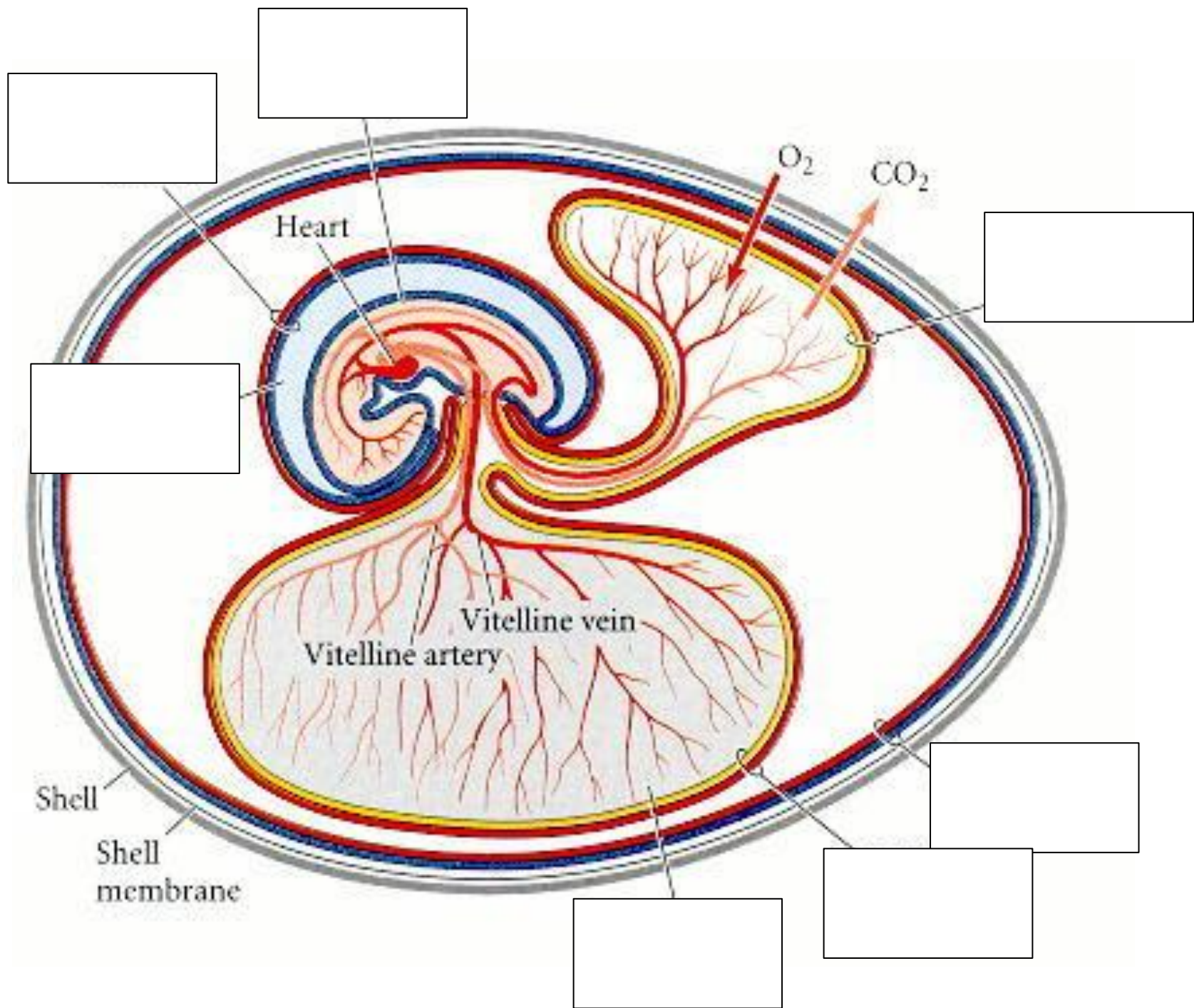
- 1 = Proamnion,
- 2 = Prosencephalon,
- 3 = Mesencephalon,
- 4 = Rhombencephalon,
- 5 = Somite,
- 6 = Eye vesicle,
- 7 = Foregut,
- 8 = Chorda (translucent),
- 9 = Heart,
- 10 = Lateral mesoderm,
- 11 = Spine,
- 12 = Sinus rhomboidalis,
- 13 = Primitive streak,
- 14 = Blood islands

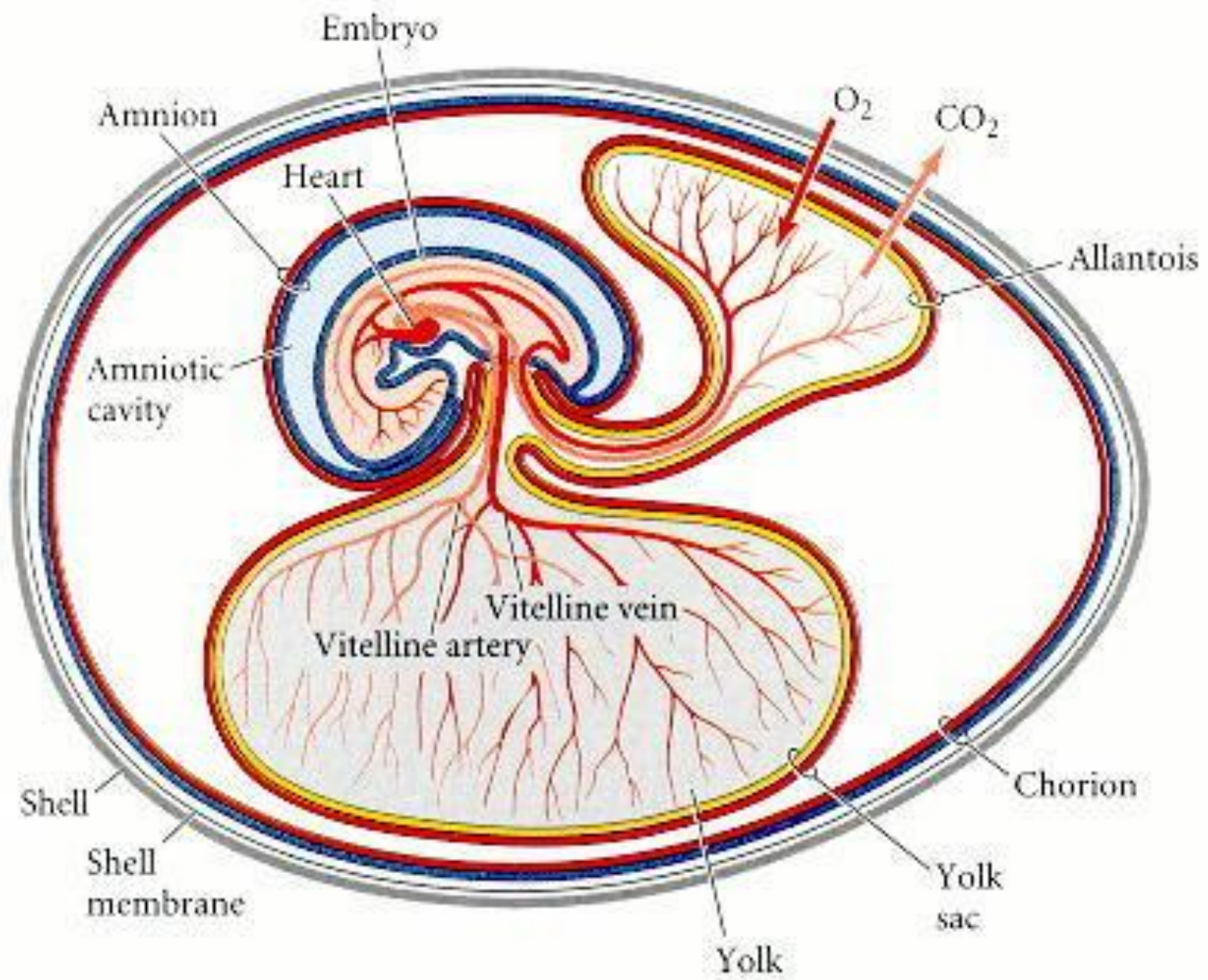
2.0 mm

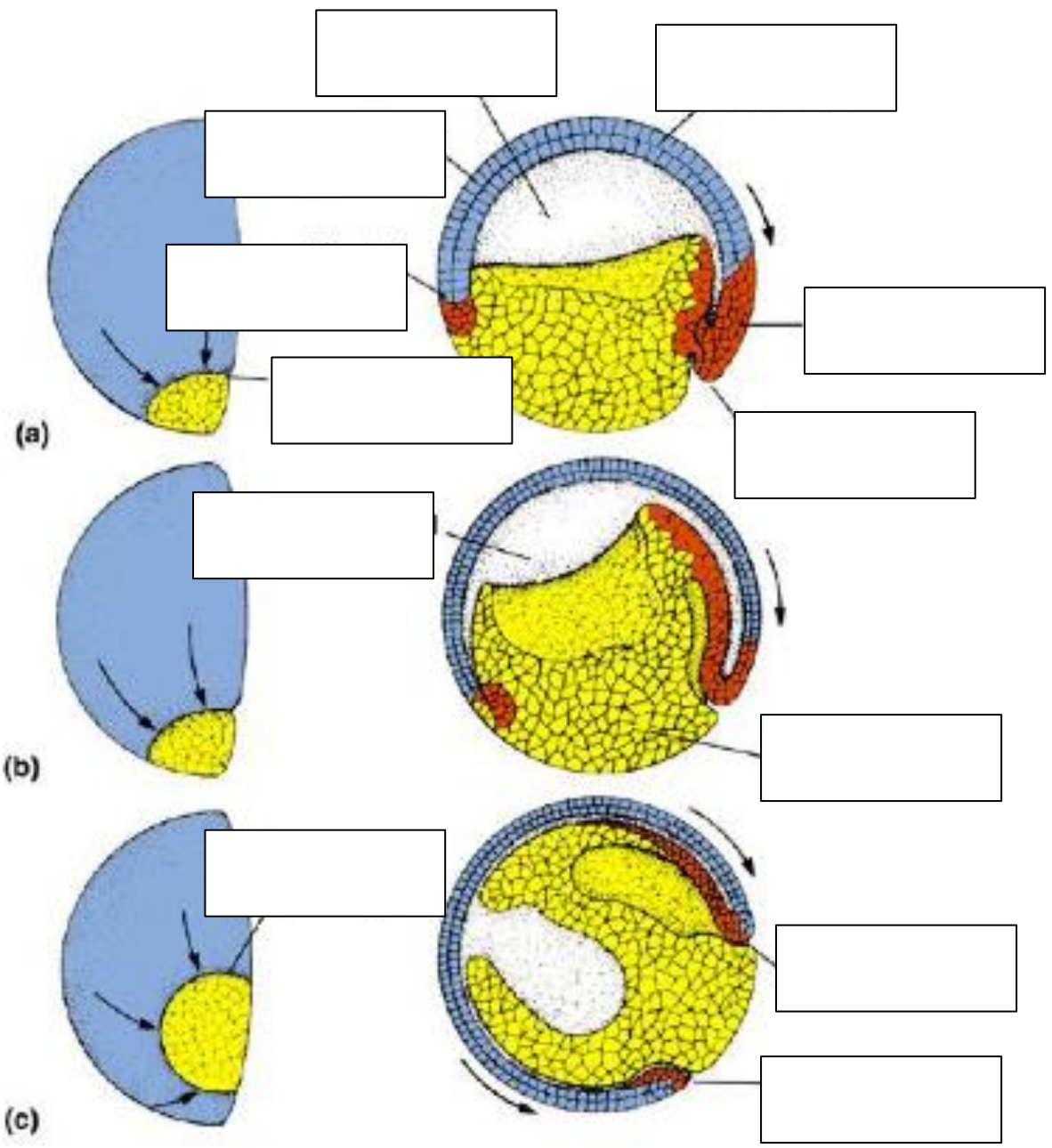


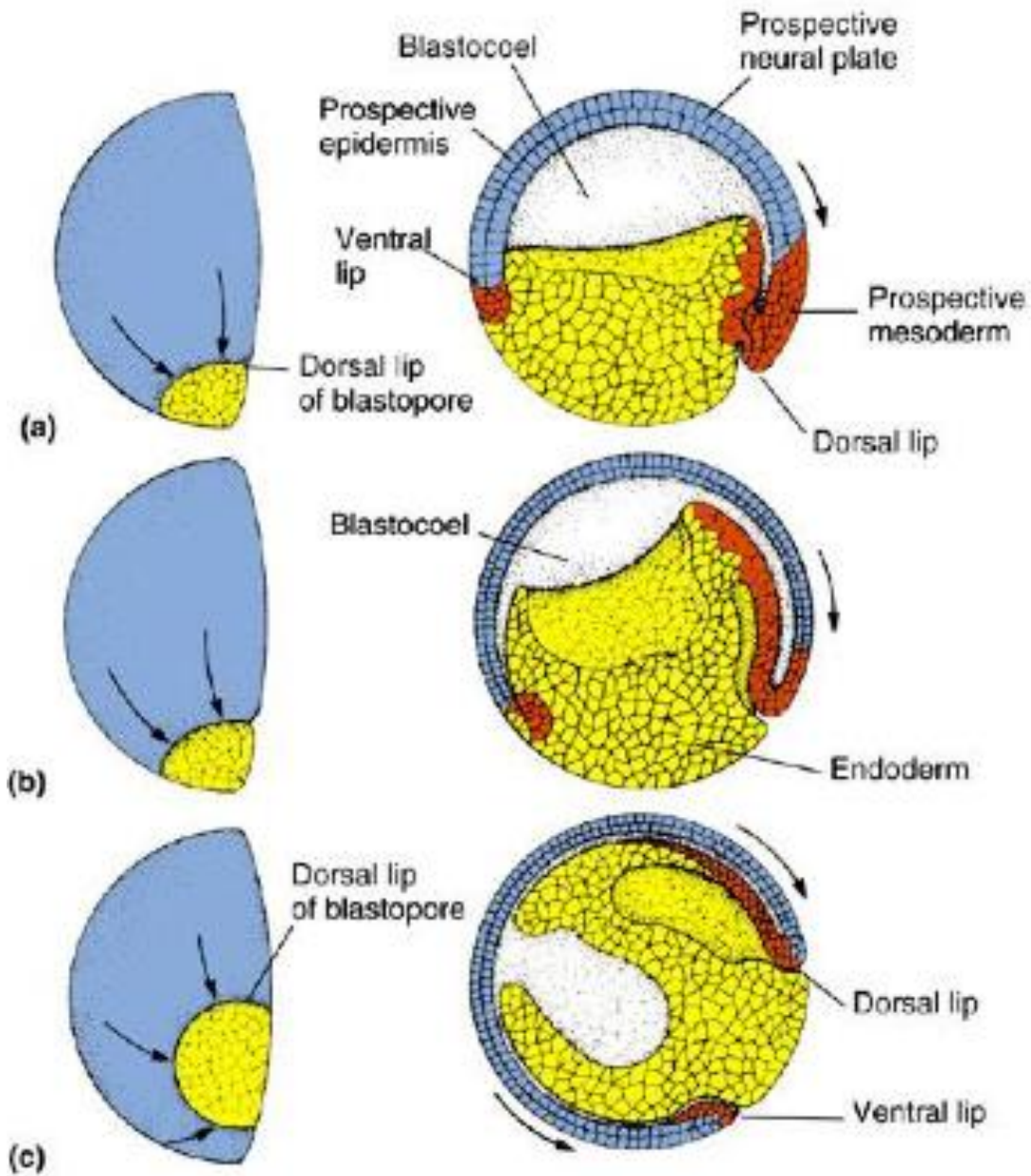


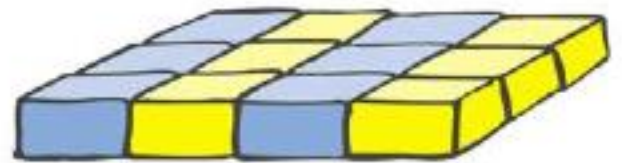
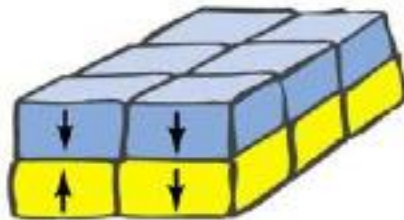
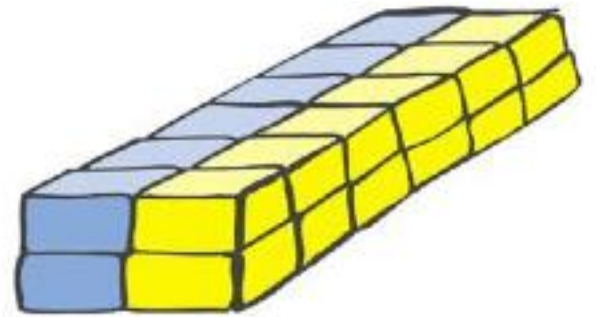
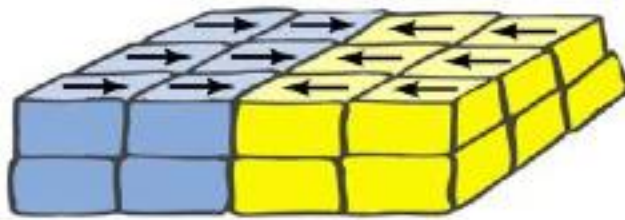




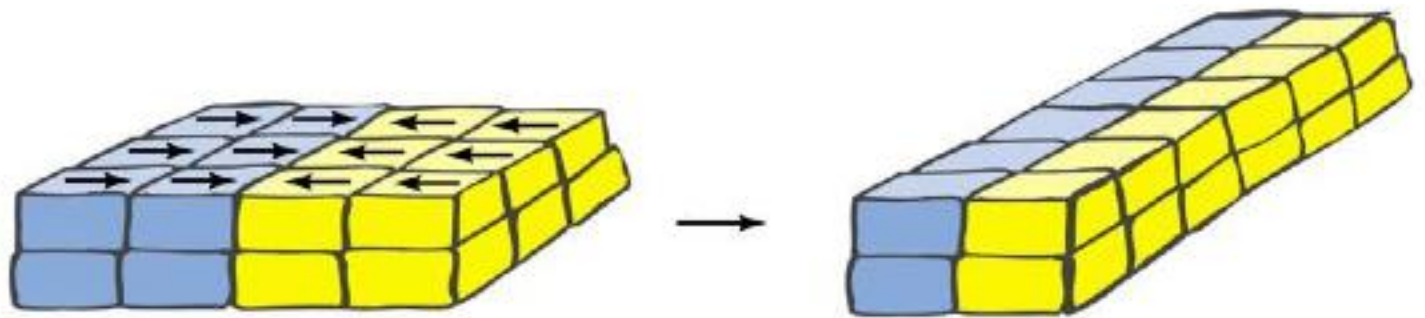




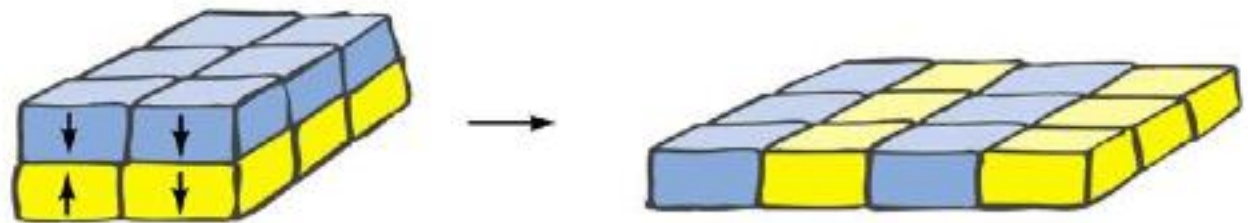




lateral
intercalation



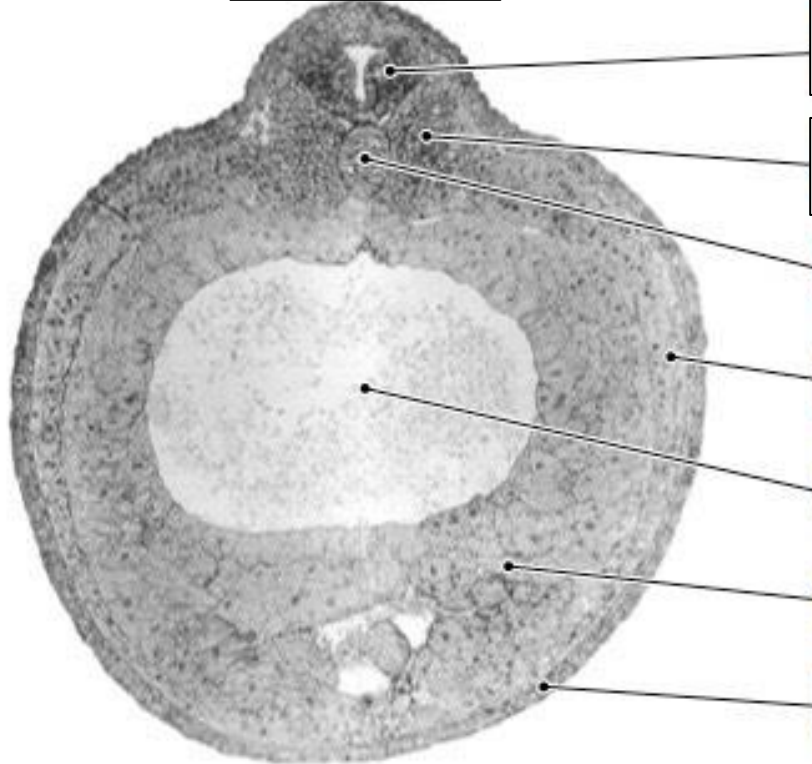
radial
intercalation



[Empty box for overall title]

[Empty box for left diagram title]

[Empty box for right diagram title]



[Empty box for label 1]

[Empty box for label 2]

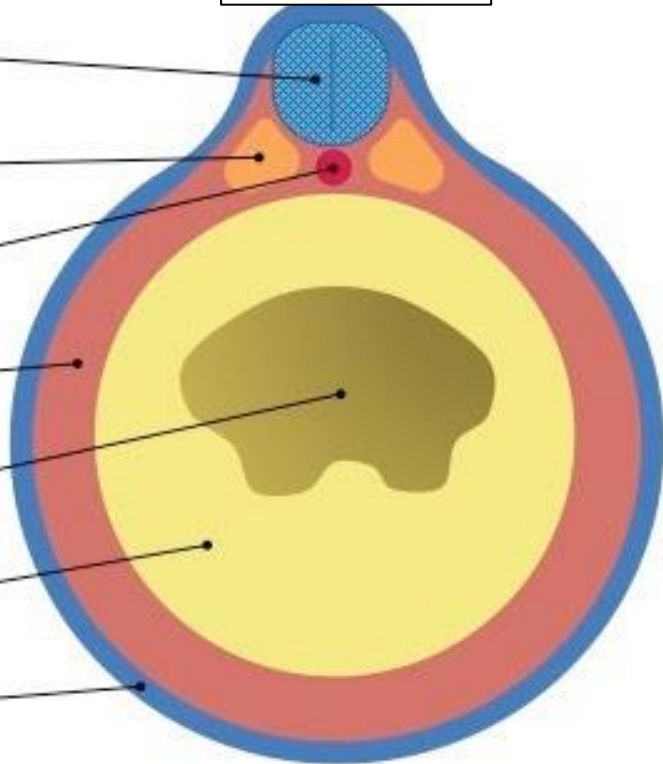
[Empty box for label 3]

[Empty box for label 4]

[Empty box for label 5]

[Empty box for label 6]

[Empty box for label 7]



[Empty box for left diagram title]

[Empty box for right diagram title]

Transverse cross-section of a *Xenopus* embryo (left: micrograph ; right: schematic)

