

# Georgia Tech

## **Bertrand P. Bousert, PhD**

Director of graduate program, Georgia Tech Lorraine

Adjunct professor of Electrical and Computer Engineering

Georgia Institute of Technology



# Overview

State university in Atlanta, Georgia  
Largest engineering program in the  
U.S.



23,000 students:  
60% undergraduate  
40% graduate



4,000+ engineering &  
science degrees



Global university: Atlanta, Europe (GT  
Lorraine), initiatives in Asia, Latin America

# Rankings

- National US
  - ★ 5<sup>th</sup> US Engineering program
  - ★ 1<sup>st</sup> by recruiters
  - ★ 1<sup>st</sup> return on investment
  - ★ School ranking
    - \* Industrial #1
    - \* Aerospace #5
    - \* Electrical & Computer #5
    - \* Mechanical #5



- International
  - ★ 6<sup>th</sup> World Engineering program

# 10 Interdisciplinary Research Institutes

**Institute for Materials**

**Georgia Tech Research Institute**

**Institute for Electronics & Nanotechnology**

**Strategic Energy Institute**

**Renewable Product Institute**



**Institute for Robotics**

**Manufacturing Institute**

**Institute for Bioengineering & Biotechnology**

**Institute for Sustainable Systems**

**Institute for People & Technology**

# Moving Innovation Into the Market Place



Top rated incubator:

- ★ #2 University-based incubator worldwide
- ★ Faculty and students as entrepreneurs
- ★ Several programs proposed,  
VentureLab, CIC, R&IC, TiGER, ...
- ★ 2011: \$1.7 B in revenues
- ★ ROI for State of Georgia = 5,000 jobs



# Georgia Tech Lorraine

## The European Campus of the Georgia Institute of Technology



A campus of Georgia Tech in Europe

# Georgia Tech Lorraine



**Activity I**

## Education

1990

**Activity II**

## Research

2006

**Activity III**

## Economic Development

2012



# Achieve International Engineering Preeminence

- World renowned program of excellence
- High integration of academia, research, economic development
- Global and international experience
- Excellence valued by industry
- Excellence made affordable with a high return on investment



# Double Degree Integrated Program

- MS degree in Mechanical Engineering (ME)
- MSME (10 courses):
  - ★ Focus in acoustics, mechanics of materials, ...
  - ★ 2 courses transferred from Sapienza
  - ★ transfer of 2 courses taken during the M1 at Sapienza

# Double Degree Integrated Program

Fall 15

Spring 16

Summer - Fall 16



(12 SCH)

(12 SCH\*)

20 months

**Master of Science  
Georgia Tech**

*Laurea Magistrale  
Sapienza*

*\* 6 SCH of undergraduate courses from Sapienza taken in Spring 14 & transferred to GT*

# Georgia Tech

## Admission requirements

- GPA min 3.4 / 4.0
- Strong letters of recommendations
- TOEFL iBT >94 / 120
- GRE:

	Scores
Verbal	>146 / 170
Quantitative	>155 / 170
Analytical Writing	≥ 3.0 / 6

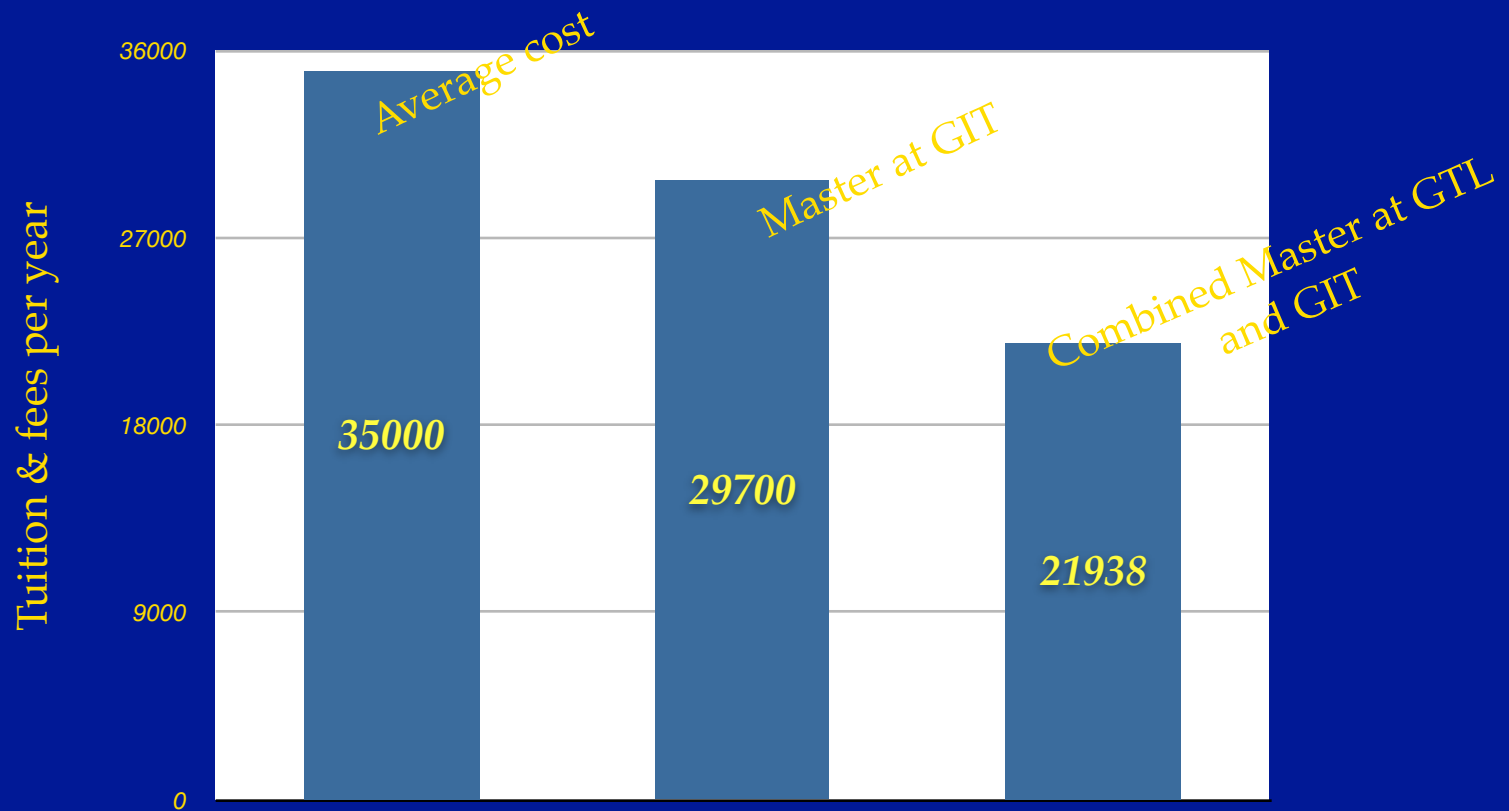
# Schedule

- Fall 2014
  - ★ Prepare TOEFL and GRE\*
- Spring 2015
  - ★ Complete and Submit GT application
  - ★ Take TOEFL / GRE (no later than Feb)
- Fall 2015 - Begin program in Metz
  - \* see: <http://www.gre.org>



# Excellence made affordable

- Highly competitive program among top US Universities



Source: US news & world report, 2012 - 2013

# Financial aid

- Assistantships
  - ★ Research Assistantships: for MS thesis or PhD students
  - ★ Assistantship: you are paid \$1,200 to \$1,700
- Financial aid available on competitive basis
- US Internships available through alumni network
- Fellowships (Rotary, Region Lorraine, etc....)
- Loans



# Tuition and Fees

## 2014 - 2015 AY



	Double degree
GIT full time	14996
GTL full time	6942
Total Cost	21938

# Excellence value by industry

- Industrial partners involves in academic/ research programs
- 12% of graduates yearly recruited on “High potential program” at Areva, Schlumberger, Eurocopter and GE
- The vast majority of our graduates students take industry positions at companies such as:
  - ★ Areva, Cisco, Schlumberger, France Telecom, Schneider Electric, EADS, Intel, IBM, Thales, Imerys, Total, General Electric, ...



# Young graduate figures

- 34% find first job in USA
- 45% in R&D - Energy / Material / Aerospace / Services -
- 15% continue with a PhD
- Yearly salary increased France leads to ROI = 5 to 7 years
- Yearly salary is \$75,000 (MS) and > 100 k\$ (PhD) on average in USA

# UMI2958: GeorgiaTech-CNRS



A successful model of International Research Laboratory

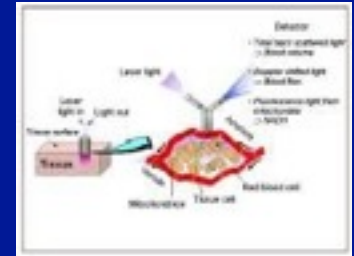
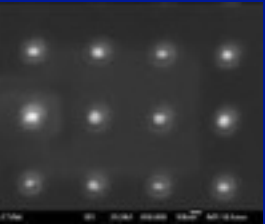
A joint laboratory between CNRS and GIT with a presence in Metz and in Atlanta since 2006. The only UMI in France



# UMI research program

- Non-linear optics and dynamics

- ★ Non-linear optics
- ★ Non-linear dynamics



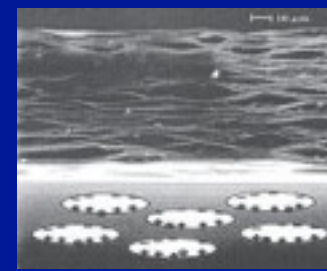
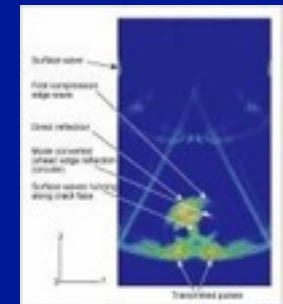
- Smart Materials

- ★ Materials and Nanostructures for photonics and electronics
- ★ Materials by design
- ★ Acoustics and non-destructive characterization



- Computer Science

- ★ Situated cognitions and Robotics
- ★ Network information systems





# INSTITUT LAFAYETTE



- Groundbreaking event on October 2012
- Inauguration event on May 26th, 2014
- An innovation platform for optoelectronics on the UMI Metz Campus
- > €30 M investments, building of 25,000 sq. ft., including 5,000 sq. ft. lab space and fully equipped 5,000 sq. ft. clean room (> €10 M investment in equipment)

# Important Dates

- Application to GT:

- ★ TOEFL & GRE Exam scores Feb 1 2015
- ★ Georgia Tech Online Application Completed Feb 1 2015

- Fall Semester Start Date Mid-August 2015

Visit our website:

[www.gt-lorraine.eu](http://www.gt-lorraine.eu)

For information on the programs or  
inquiries on the application, contact

Bertrand Boussert

[bertrand.boussert@gt-lorraine.eu](mailto:bertrand.boussert@gt-lorraine.eu)

Tel: 03 87 20 39 47

Contacts:

Paolo Cappa

[paolo.cappa@uniroma1.it](mailto:paolo.cappa@uniroma1.it)

Tel: 06-44585-273