



tabu®

*wood veneers' dyeing*



# **STUDENTS' MISSION**

**PUTTING SURFACES  
AT THE CENTRE OF THE PROJECT  
TO GIVE VALUE TO  
FURNITURE AND INTERIORS**

in every surface,  
the challenge  
lies  
in the aesthetic  
impact

# WHY CHOOSE THE WOOD?

- Genuine (it's real wood)
- Tactile and olfactory effects (warm and scented)
  - Exclusive (every piece is different)



Wooden table made with Tabu's  
Eucalyptus Frisé.  
Crafted by [Bazzi Group](#)









Tabu's Ash, [Grisaille Studio London Ltd.](#)





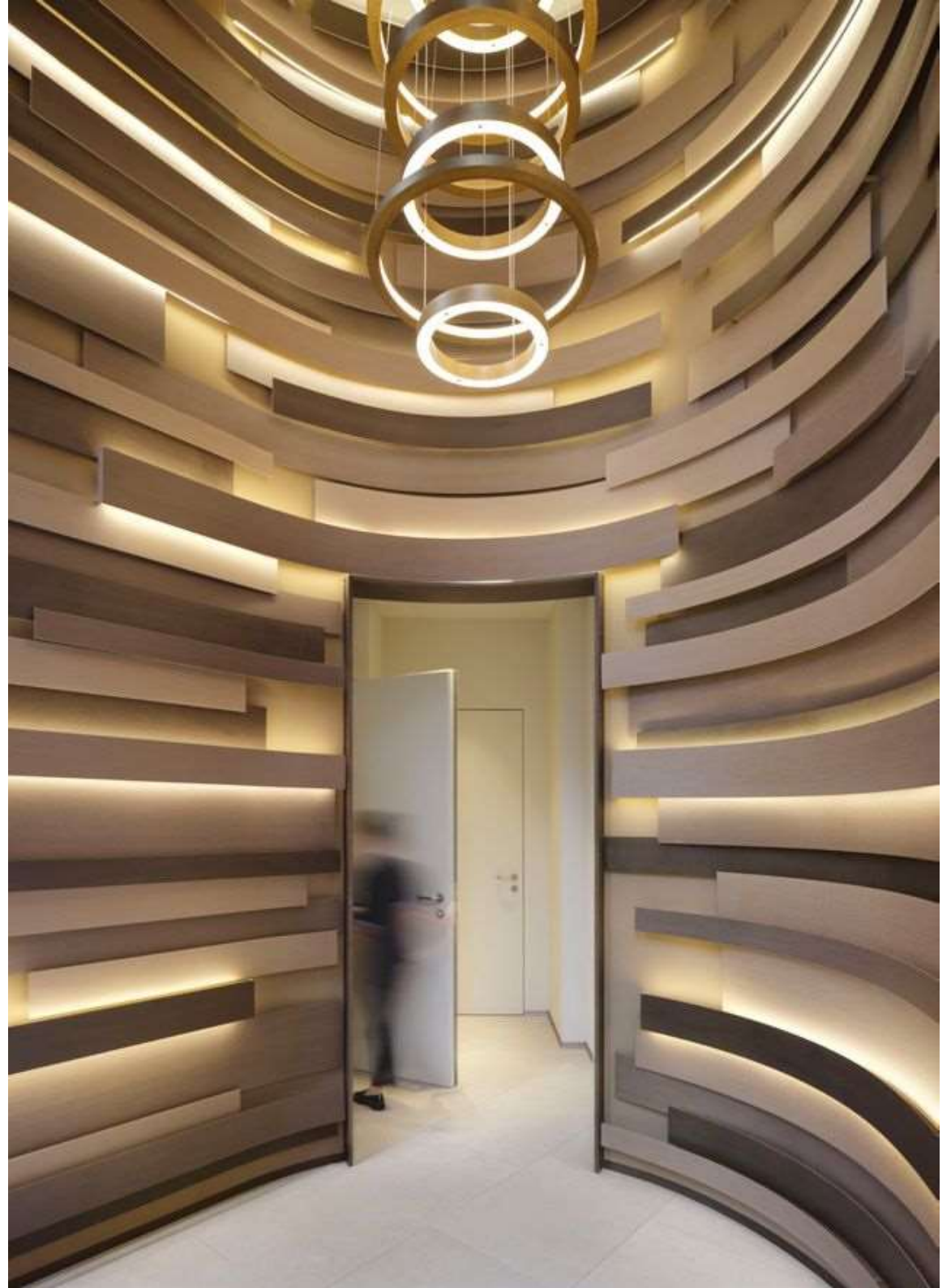


The light shades of Eucalyptus wood decorate the spaces of the Ikos Hotel in Porto Petro in Mallorca, giving spaciousness and brightness.





Casa Cipriani SPA welcomes the visitor with a room covered in TABU Oak, dyed in three different shades chosen by Studio Apostoli.











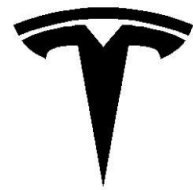
# **Automotive and Boat Industry**

tabu®

*Alfa Romeo*



tabu®



TESLA











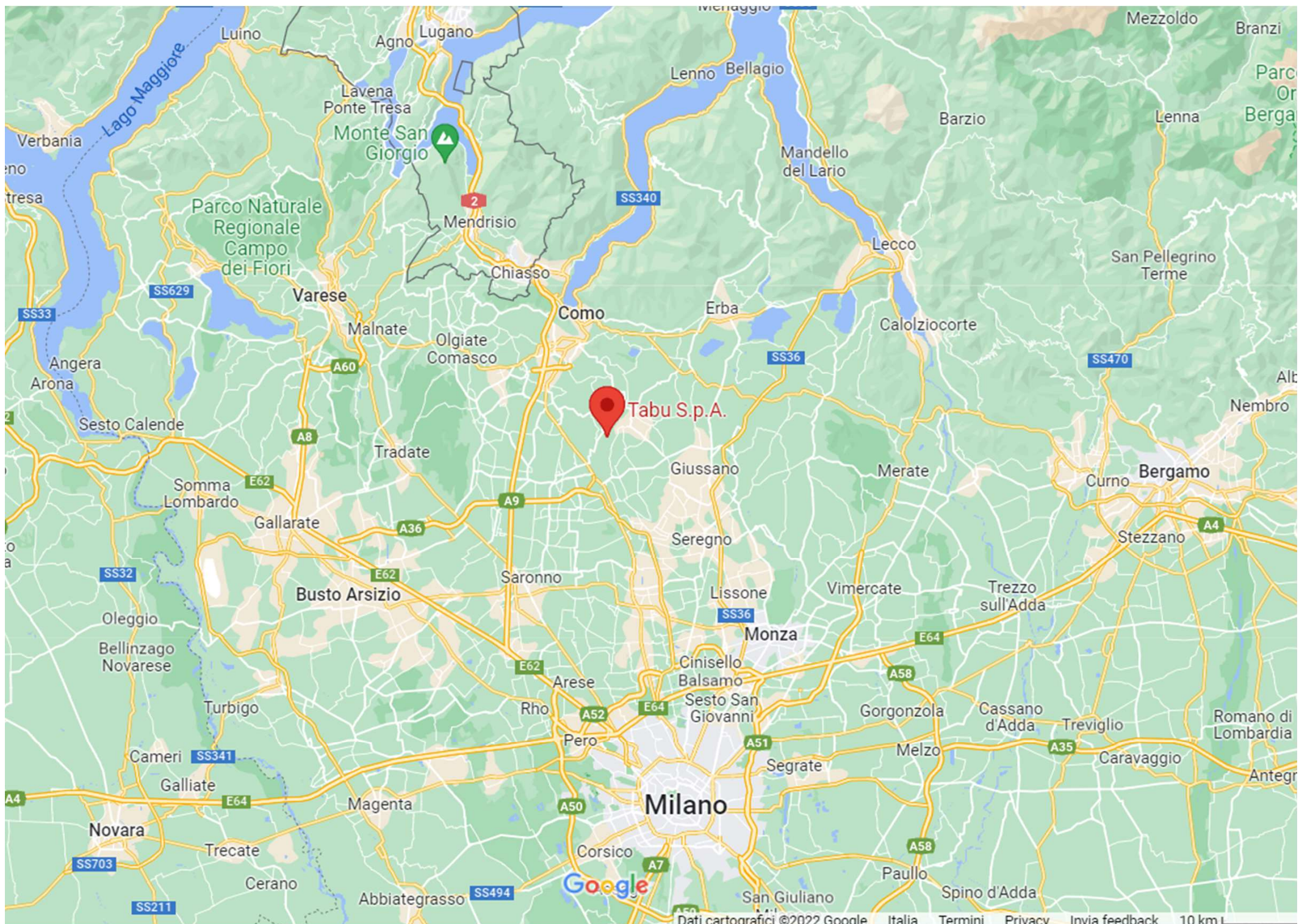
To clad the dashboard inside the car, Tesla has chosen a multilaminar wood veneer TABU of latest generation, in the “Walnut” design





*wood veneers' dyeing*

**Since 1927**



Tabu S.p.A.

Google



**tabu**<sup>®</sup>

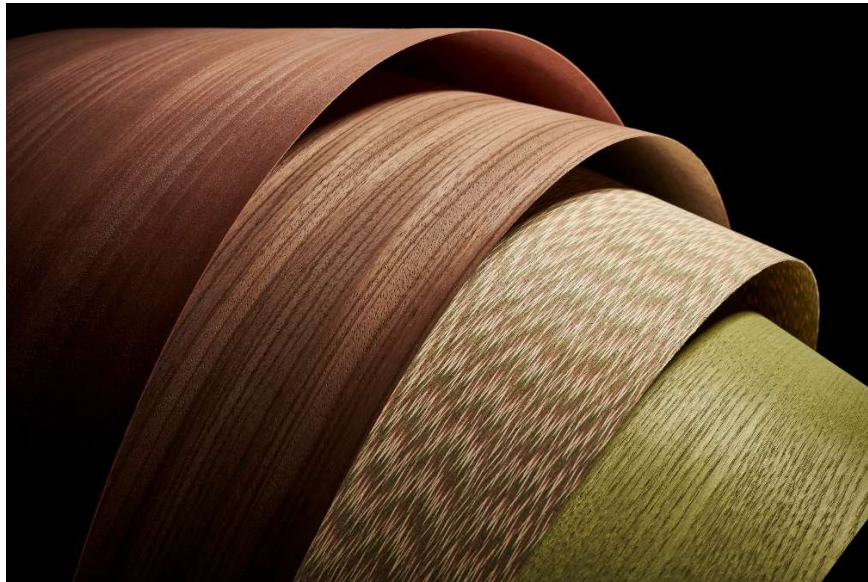
Founded in 1927 in Cantù (Lombardy - Italy), TABU is the world excellence in dyeing wood veneers



**Natural dyed veneers  
and multilaminar  
wood veneers**

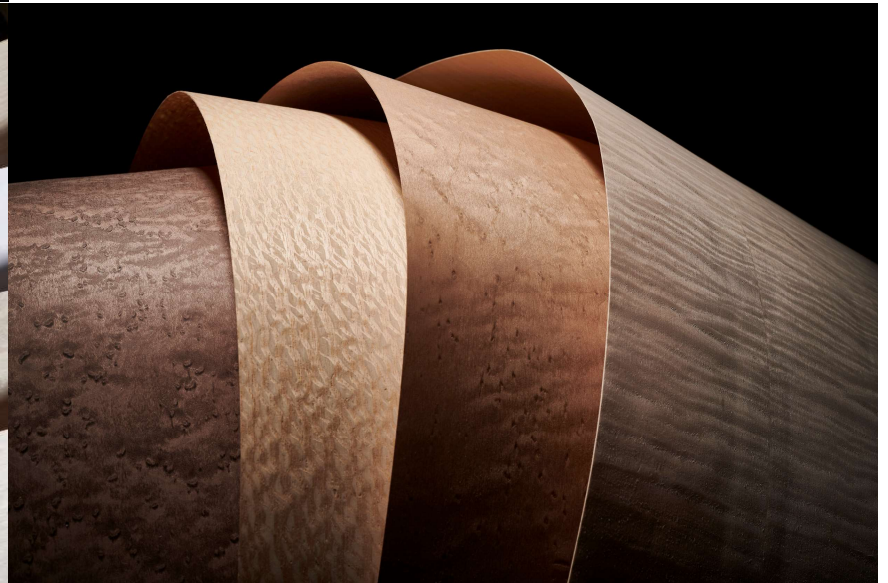


tabu®



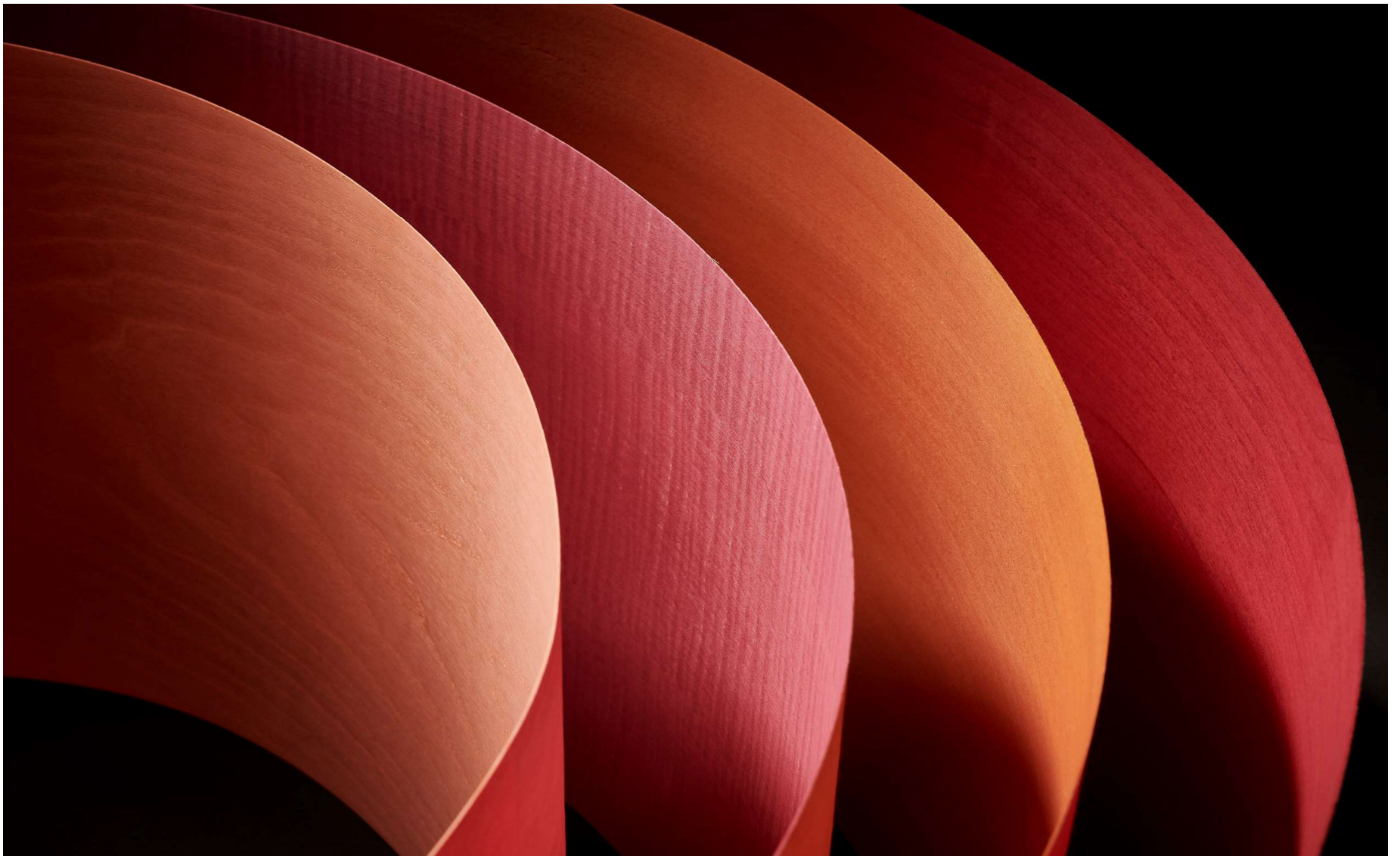
A veneer is a thin sheet of wood obtained by slicing or rotary cutting.

It is 0.6 mm thick and it is glued, onto a support of a panel that can be made of MDF, chipboard or plywood



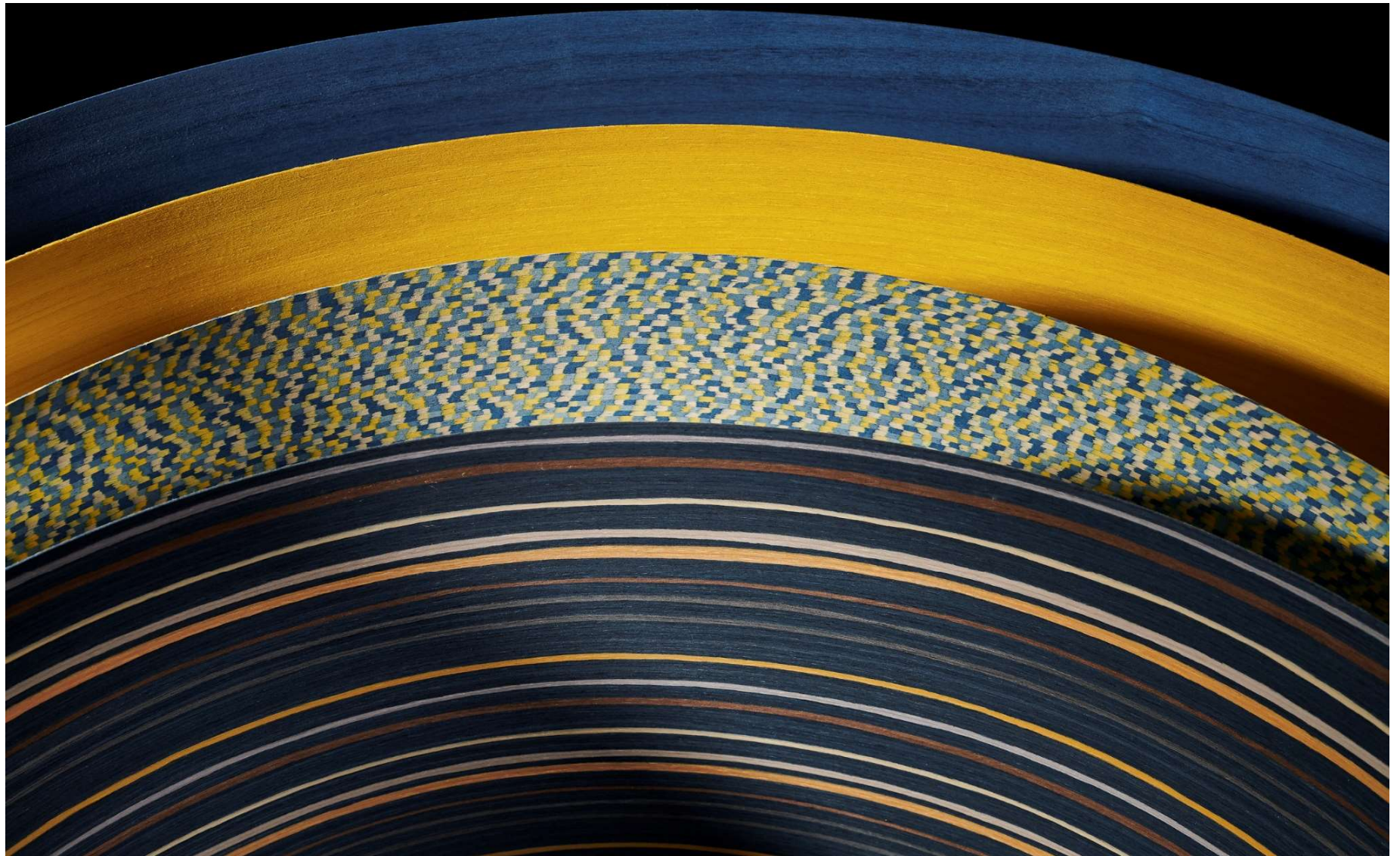


tabu®



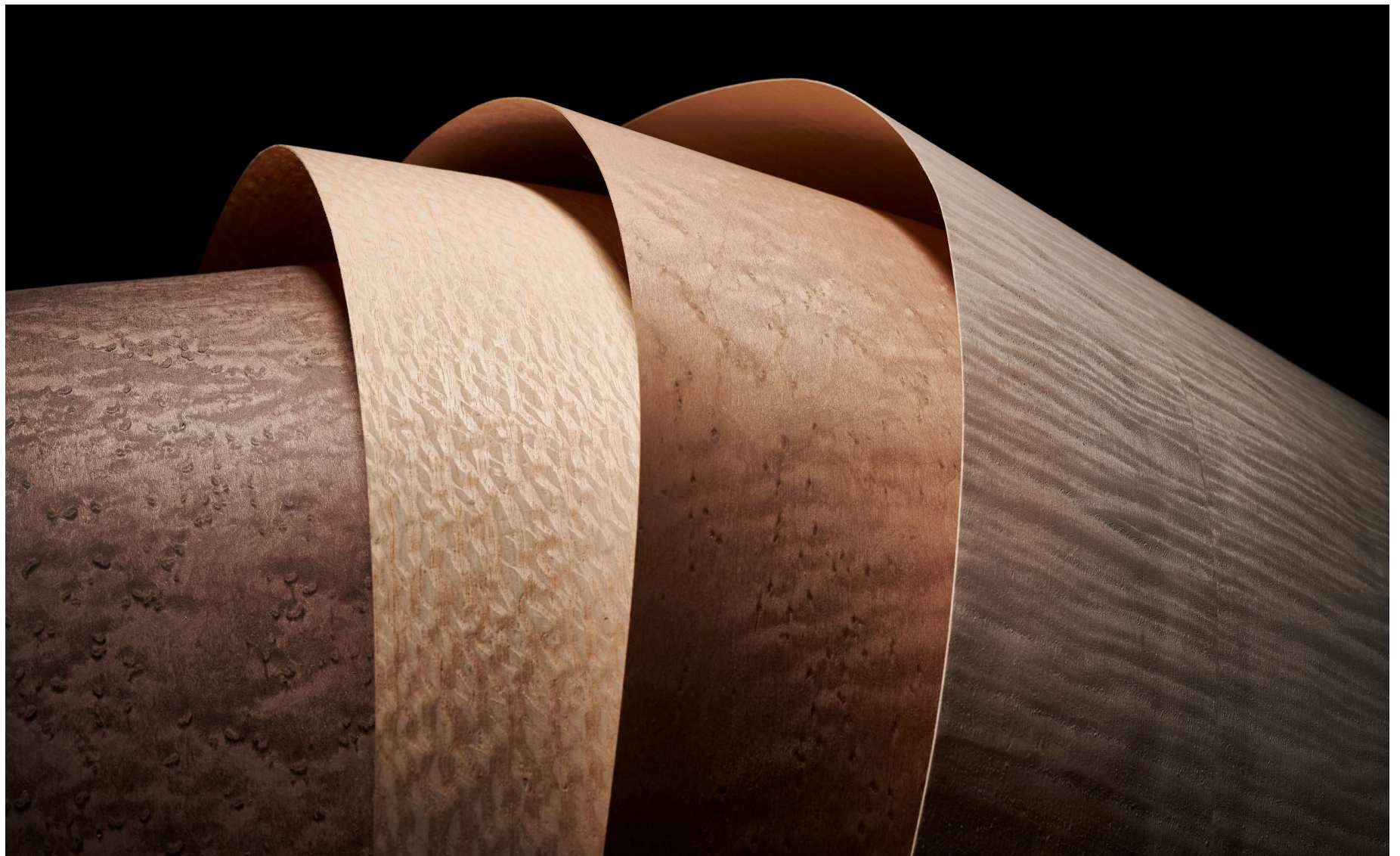


tabu®





**tabu®**





tabu®



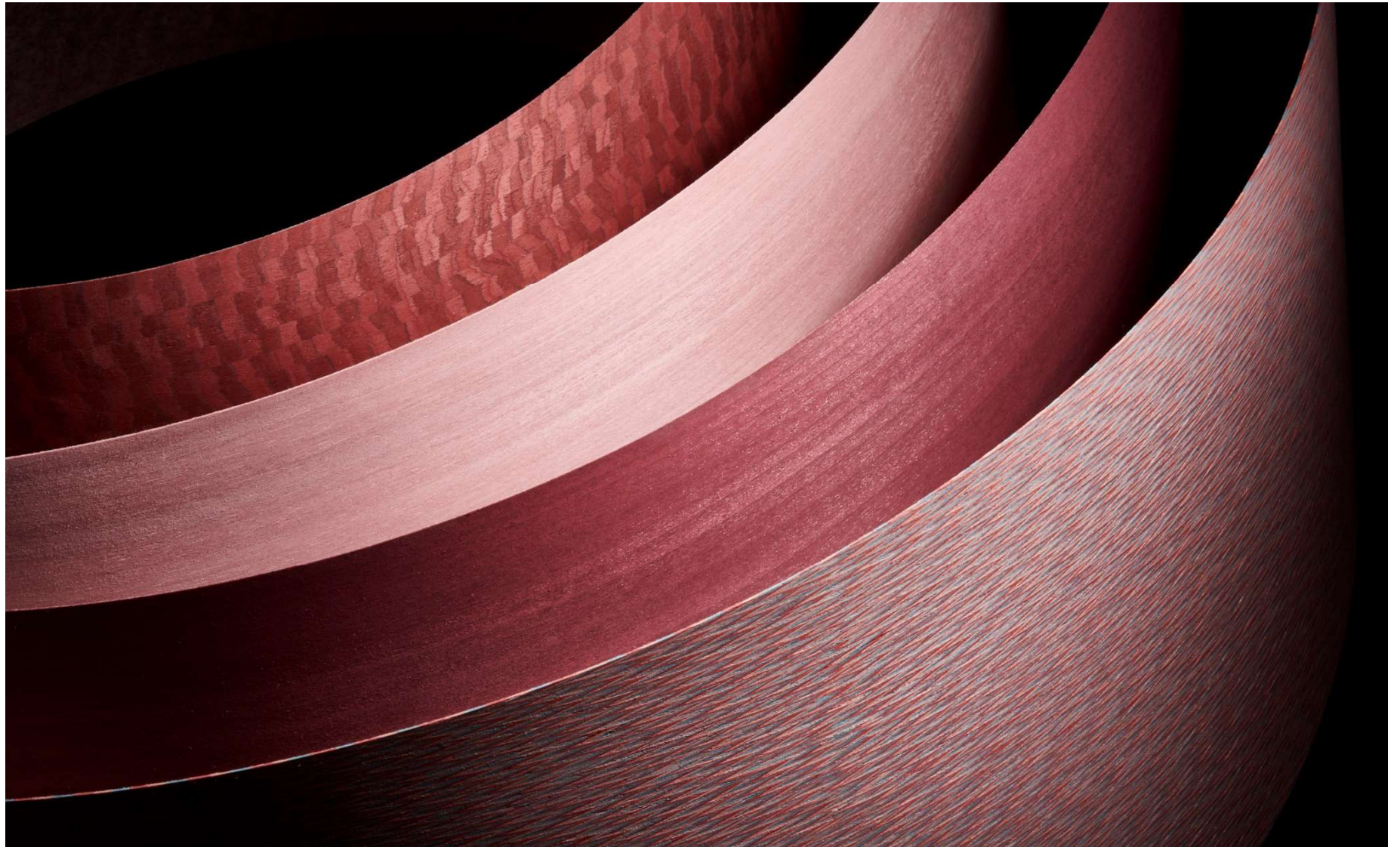


**tabu**<sup>®</sup>



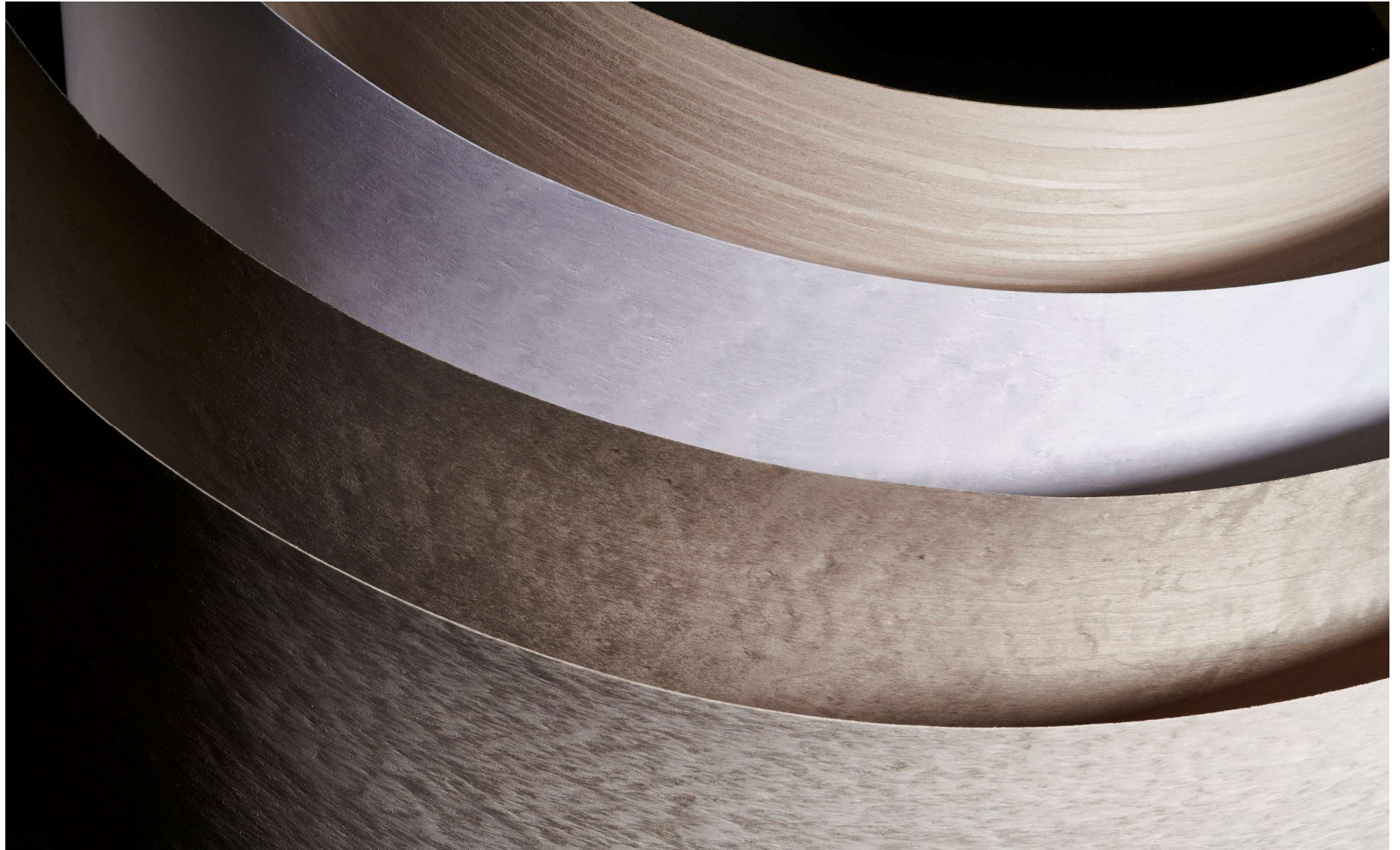


tabu®



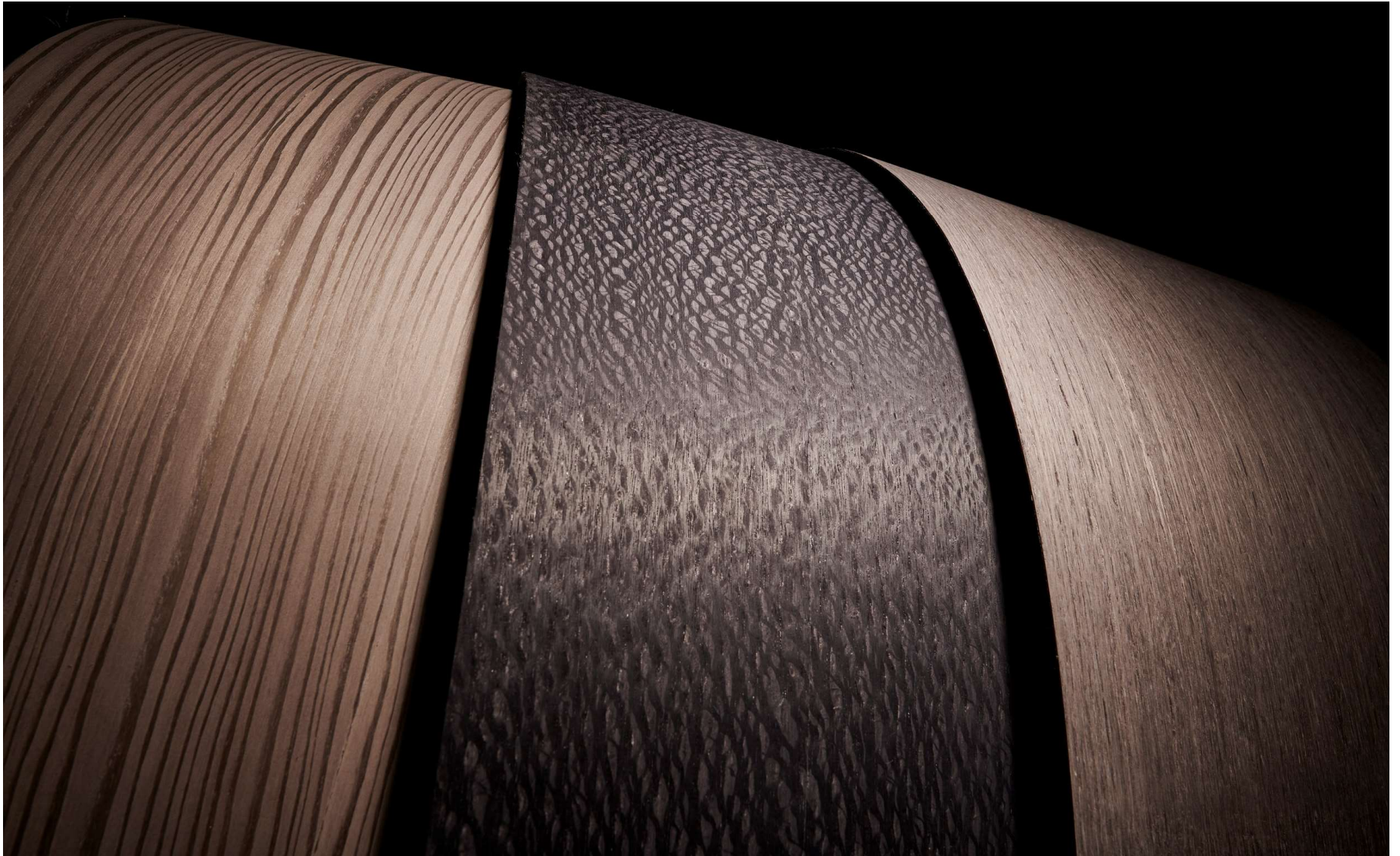


**tabu<sup>®</sup>**





**tabu**<sup>®</sup>



# Three-dimensional veneers



**tabu®**



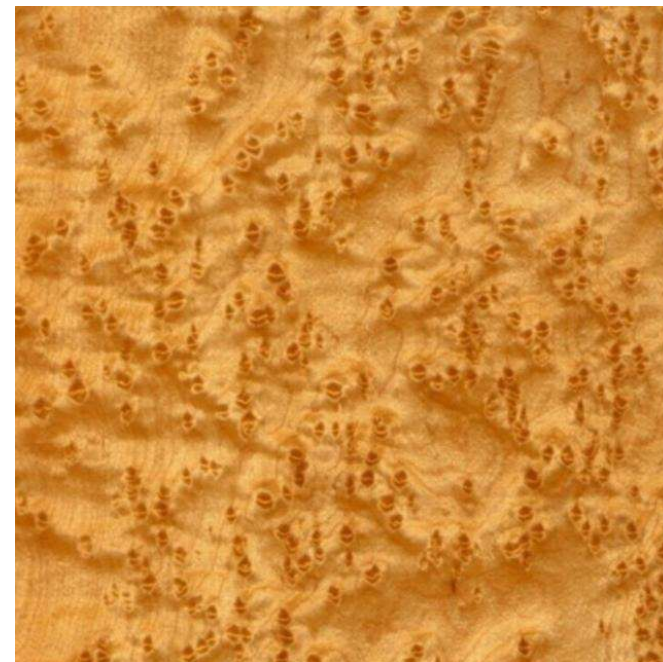
Burl



Poméle



Figured



Eyes

**tabu**<sup>®</sup>

## THE BURL

A burl is a growth in the lower part of the trunk, not necessarily in correspondence of the roots. The fiber has an energetic and irregular development





tabu®

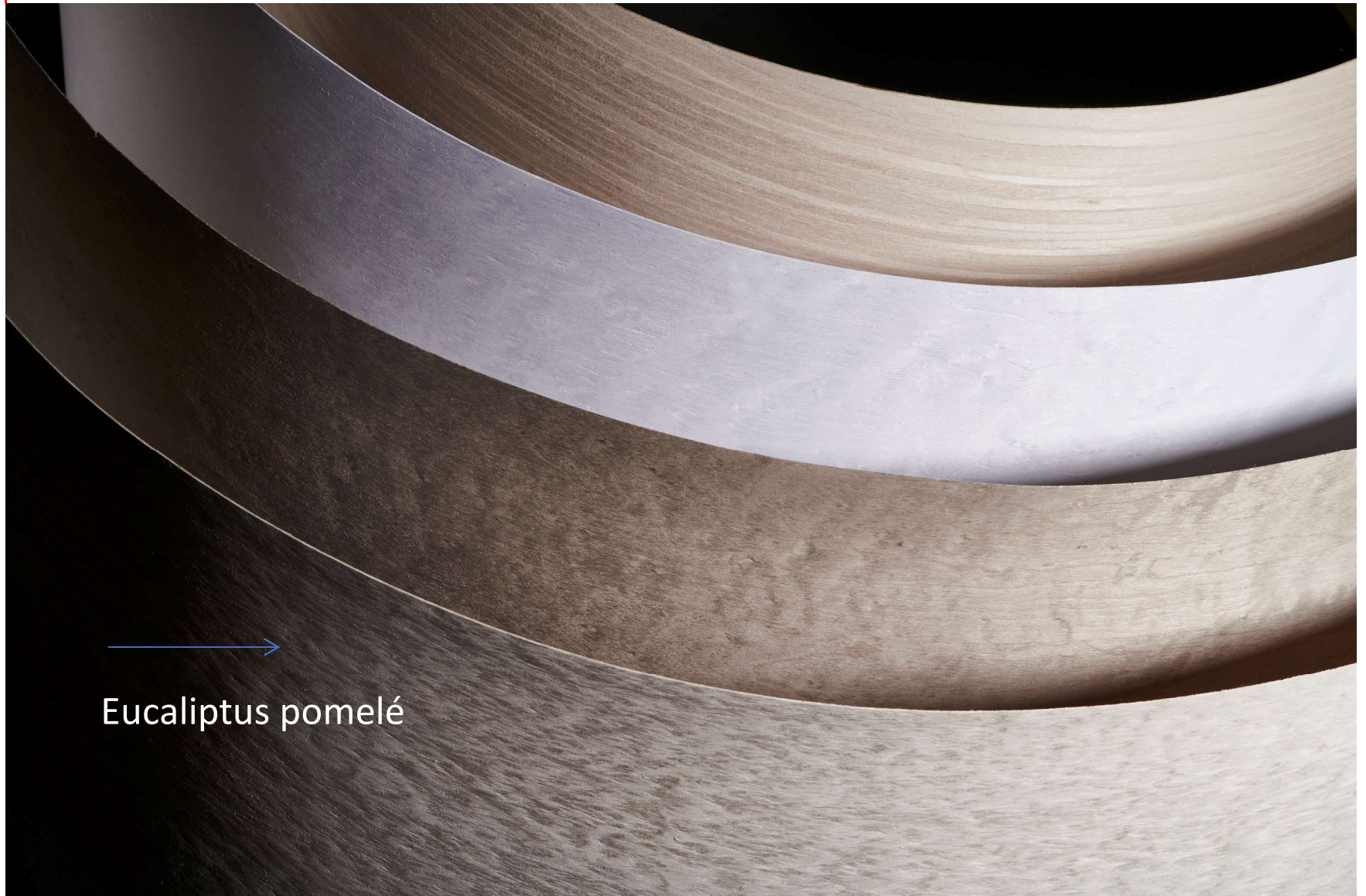
POMELE'



The fiber had a soft, volute development, almost circular, without generating growths outside the trunk of the plant.

tabu®

→  
Eucaliptus pomelé





tabu®

FIGURED



Overlapping bundles generated by the  
slow collapse of the trunk on itself













tabu®

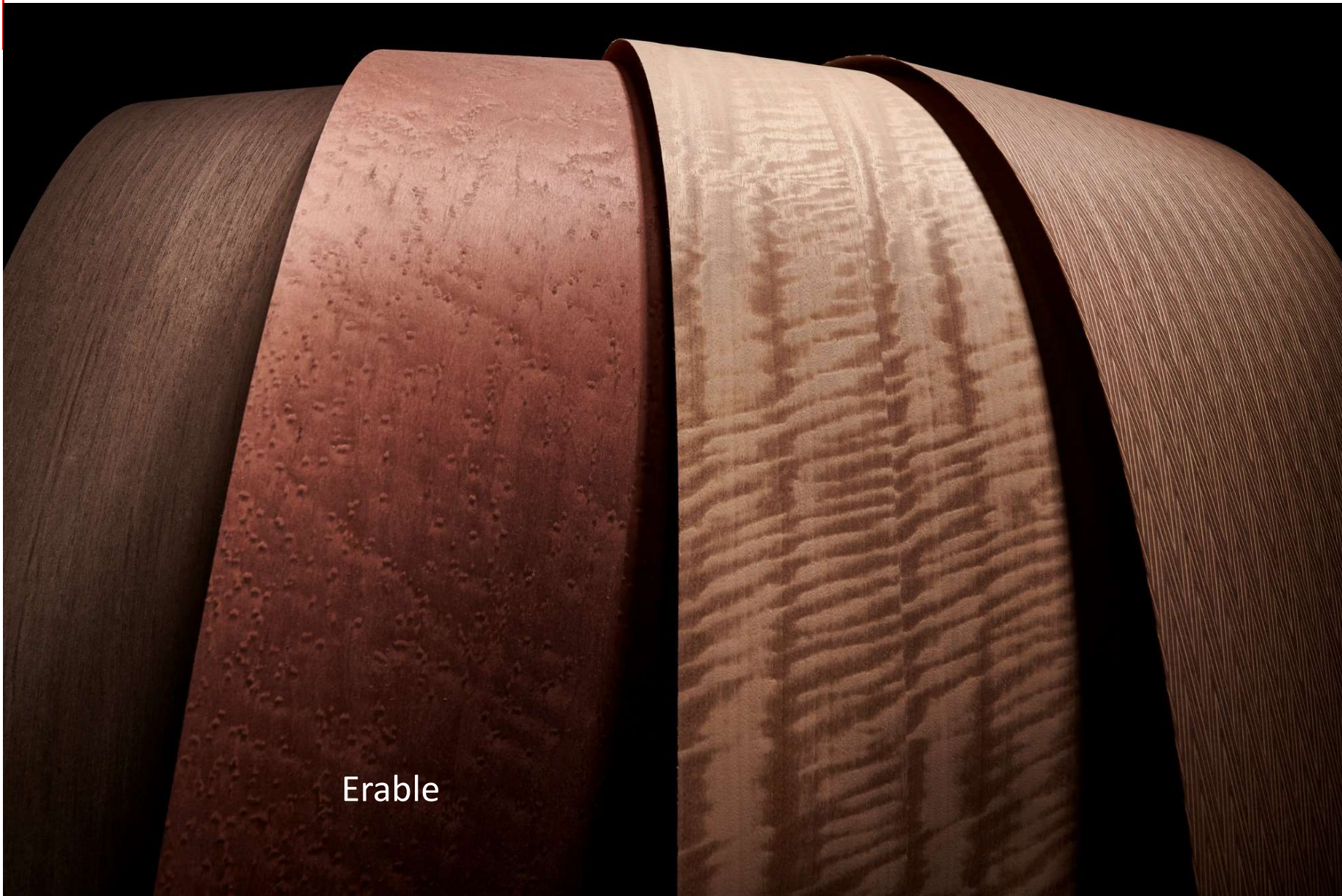
ERABLE



#### BIRD'S EYE MAPLE

Three-dimensionality due to the fact that, during the harsh North American winters, the sap freezes inside the trunk, impressing a drawing in the fiber, similar to a bird's eye. It is a seasonal phenomenon. (Maine, Michigan, New York, Wisconsin)

**tabu®**



Erable



**tabu®**

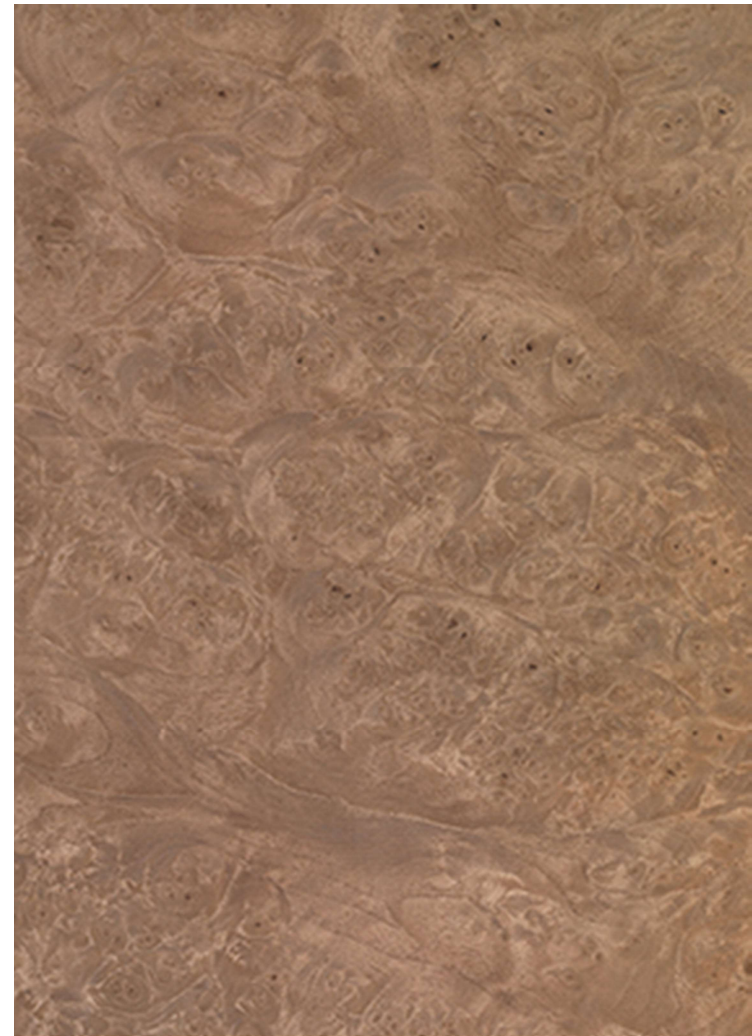
**FIGURED /FRISE': TANGANIKA**



**tabu<sup>®</sup>**

## BURLS: MADRONA (USA) and WALNUT

...Ash, Oak, Maple...





**tabu**<sup>®</sup>

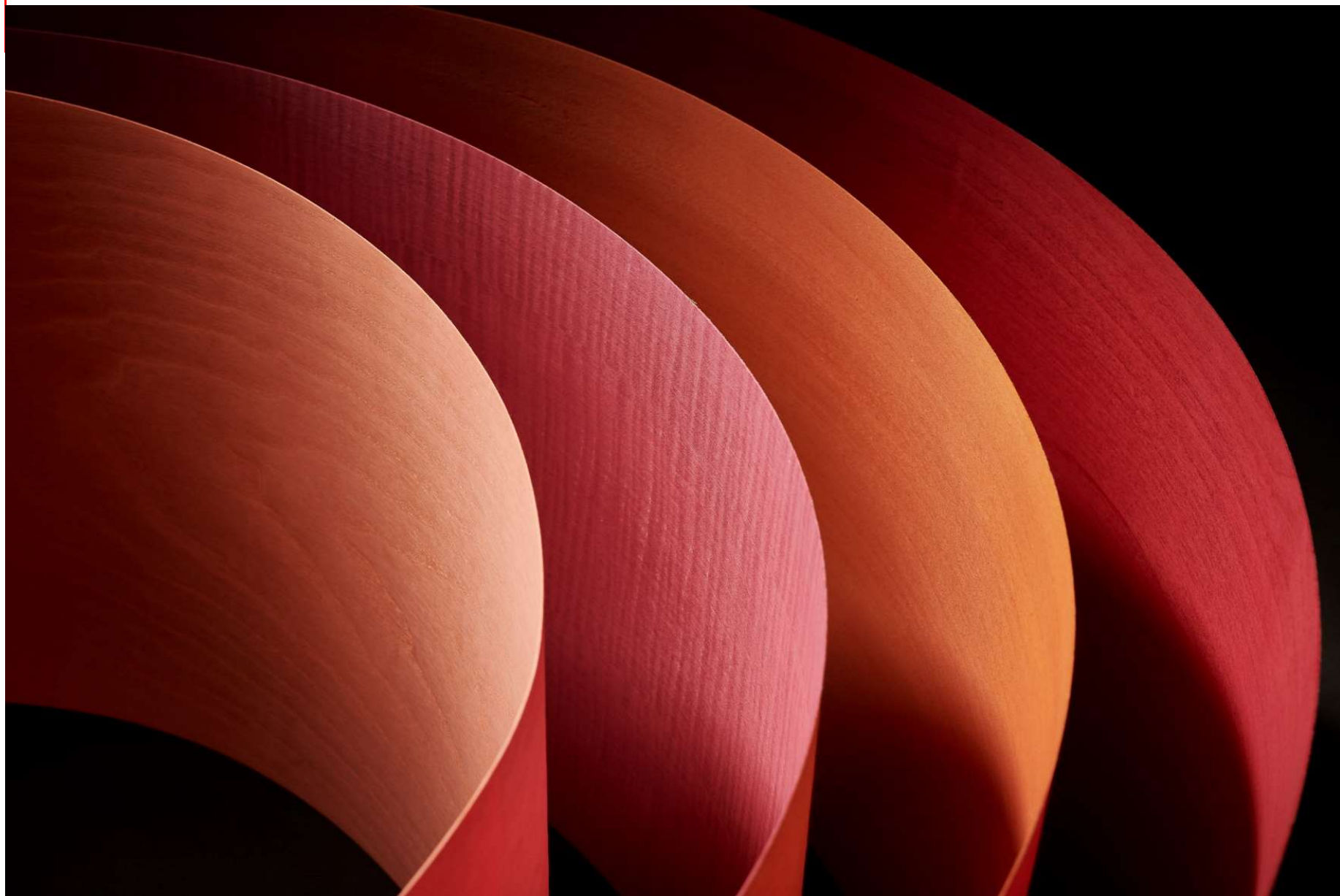
**POMELE': MOGANO and EUCALYPTUS**



# The wood dyeing technology



**tabu®**



The logo for 'tabu' is written in a bold, lowercase, sans-serif font. A registered trademark symbol (®) is located to the upper right of the 'u'. The logo is positioned on the left side of the page, next to a vertical red bar.

tabu®

The text 'NATURAL VENEER' is centered on the page in a black, uppercase, sans-serif font. Above the text, there are two small colored squares: a green one on the left and a red one on the right.

NATURAL VENEER



**BLEACHING - PURIFICATION**



The chemical components, present in the fiber, are removed from the natural veneer.

Natural veneers coming from logs of the same species are purified and evened out.



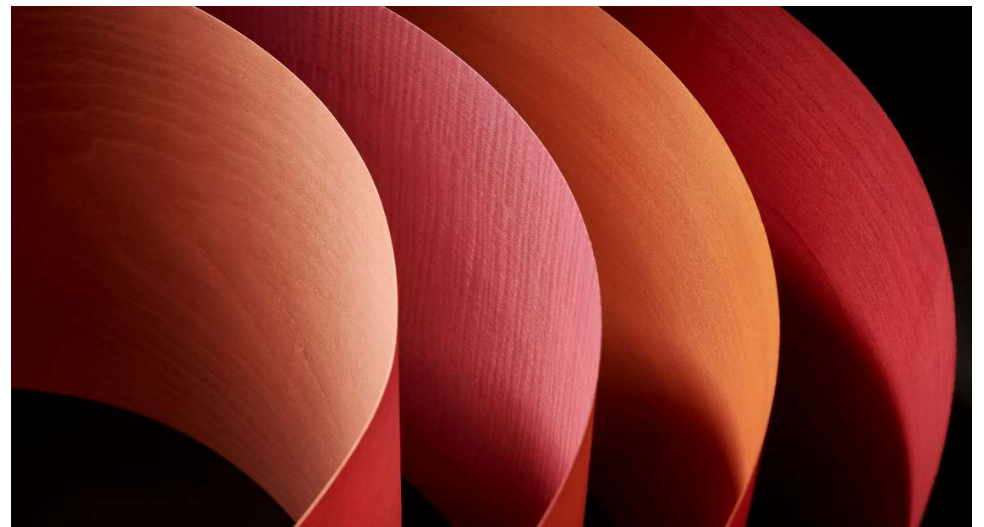


tabu®

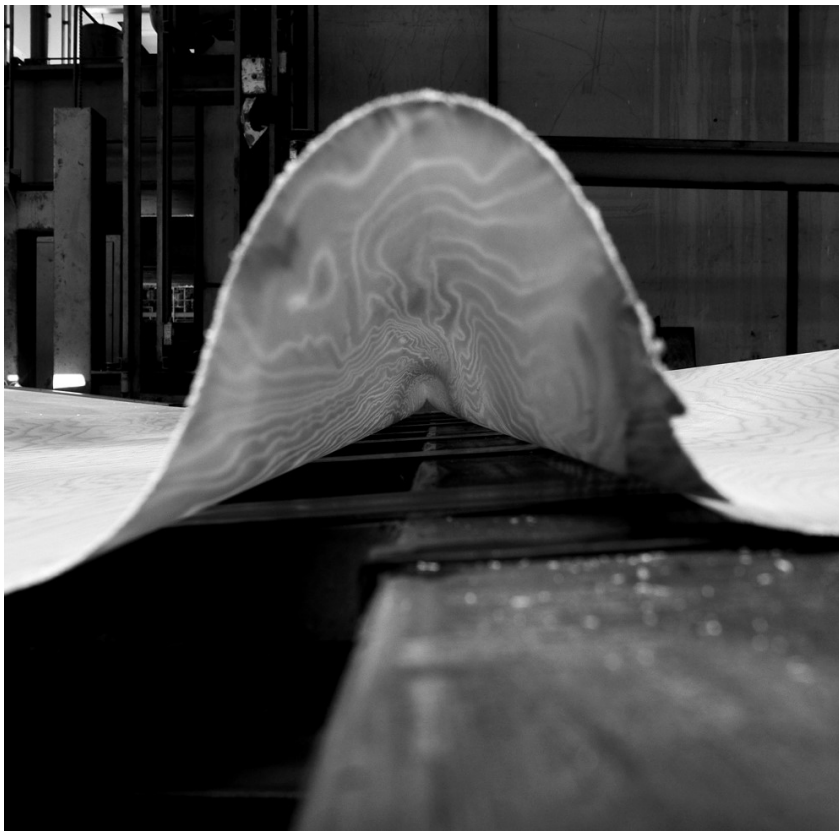
**NATURAL DYED VENEER (anti-toxic,  
warm free)**

With new properties: aesthetic,  
mechanical, chemical - physical...

- **Color differences** in the same log  
and between different logs of the  
same species
- we obtain the same color to  
infinity
- we have any color
- we enhance the grain of wood and  
the beautiful three-dimensionality  
in precious wood.



## SLICING AND ROTARY CUTTING



A veneer is a sheet of wood obtained by slicing or rotary cutting. It is 0,2/ 0,3mm thick.

In the furniture industry, they are usually 0,6 mm thick (6/10).

**VIDEO 1: Flat slicing** is carried out by slicing a blade tangent to the log section, so to create a veneer with ***crown (or cathedral) structure***.

**Video 2: Rotary cutting.** The machine, in this case, is different. The blade remains fix; then the log rotates around its own axis and gets peeled, just like an apple. The result is a very large sheet of wood, from which you cut the next portions that do not have a defined structure.



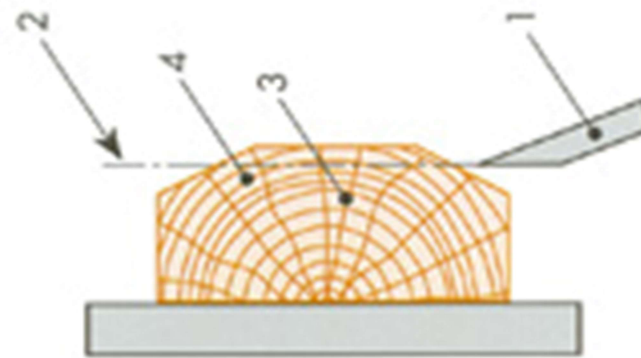
## SLICING TECHNIQUES

### Flat slicing:

- 1) Blade
- 2) Carried out by sliding a blade tangent to the log section
- 3) Radius
- 4) Growth rings



**VENEER WITH CROWN OR CATHEDRAL STRUCTURE**



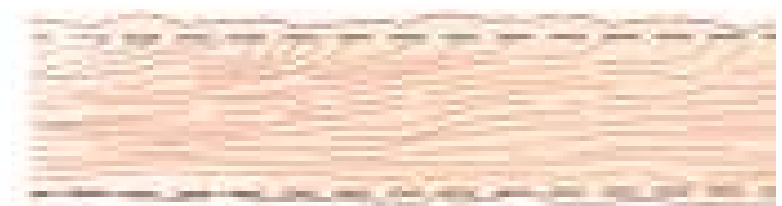
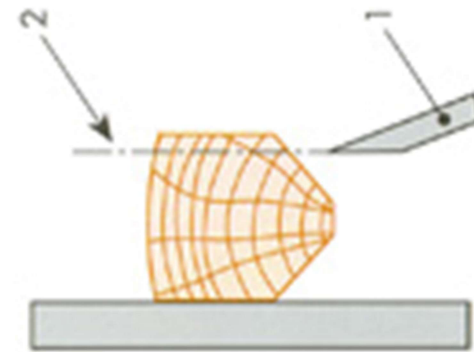
## SLICING TECHNIQUES

**True quarter slicing:**

- 1) Blade
- 2) Slide direction: radial to the log section



**THE VENEER WILL SHOW A STRIPY STRUCTURE**





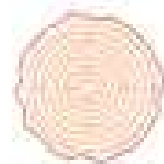
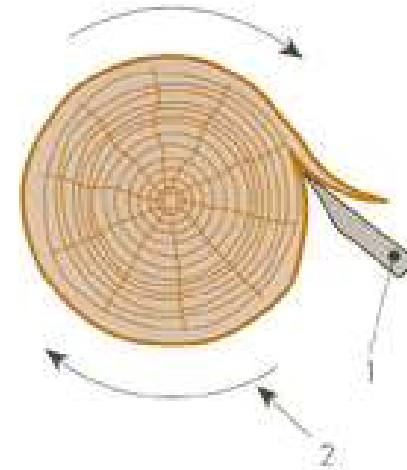
## THE ROTARY CUTTING

### 3 – PEELED OR ROTARY CUT

- 1) Blade
- 2) Rotary direction: the log turns on its own axis
  - Technical choices ex. Logs with a small diameter in order to exploit the surface
  - Specific wood species



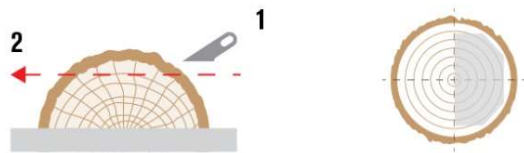
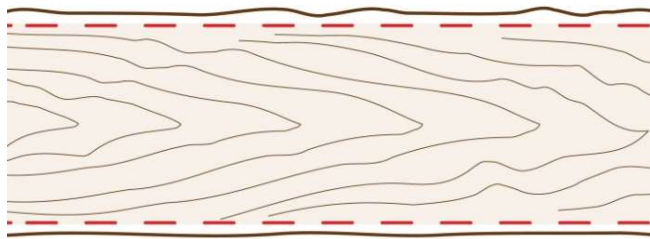
**WOOD WITHOUT A WELL-DEFIN  
STRUCTURE**





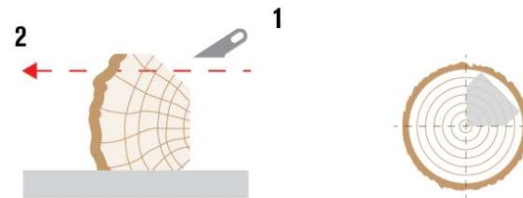
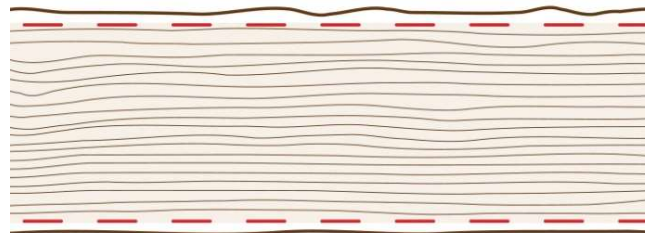
# FIGURES OF WOOD VENEERS AND NATURAL DYED VENEERS

Fiammato



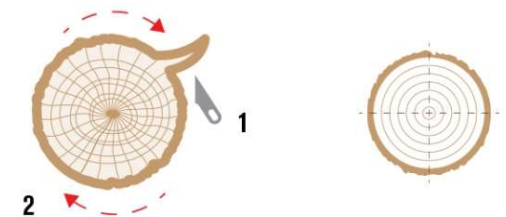
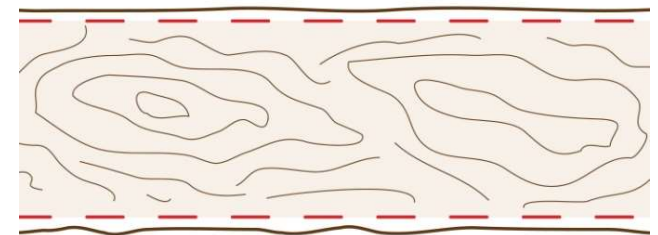
Flat slicing  
1 Blade  
2 Slide direction

Rigato



True quarter slicing  
1 Blade  
2 Slide direction

Derulato



Rotary cut  
1 Blade  
2 Slide direction



tabu®

## MULTILAMINAR WOOD VENEER (MW)

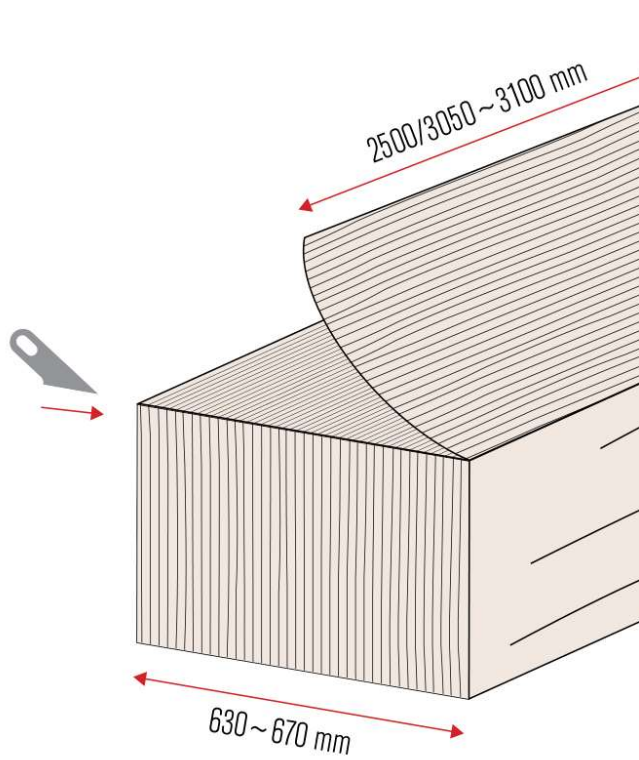
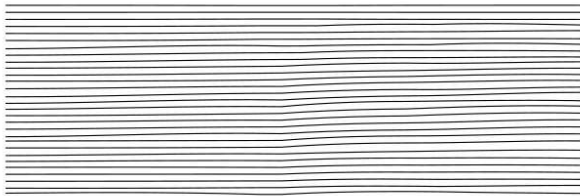


Multilaminar wood –MW- is made up of many thin lays of different wood species that, after being colored individually, are placed and assembled so as to obtain real solid wood from which the veneers are then sliced. The final material is wood that deliver:

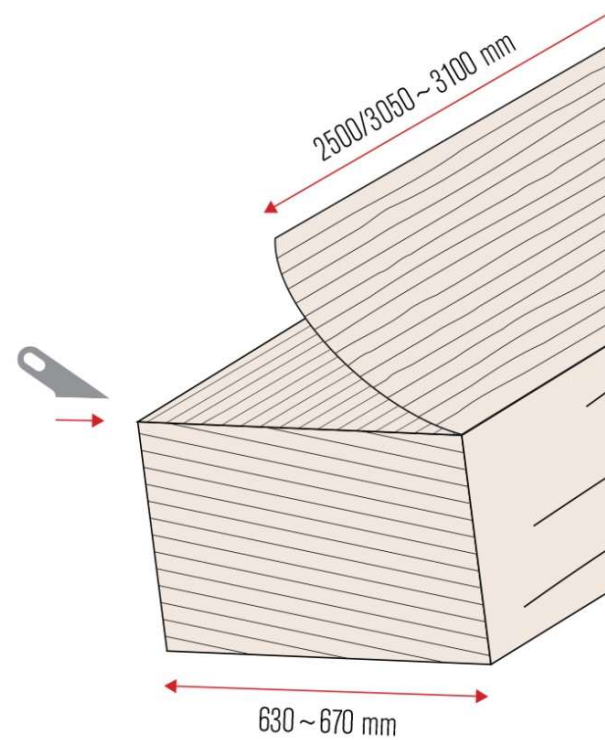
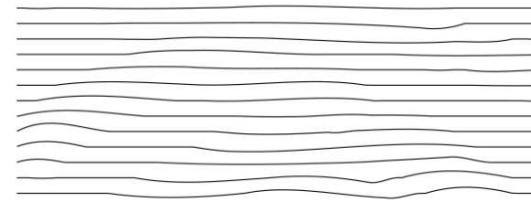
- Uniformity of color and repeatability of structure
- Fixed size (310/250 cm x 65 cm)
- Optimization of the material and limitation of production waste

# MULTILAMINAR WOOD VENEERS

Striped

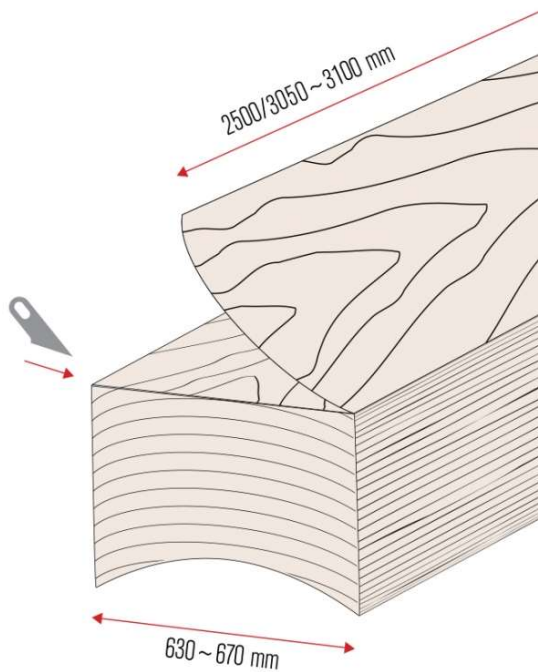
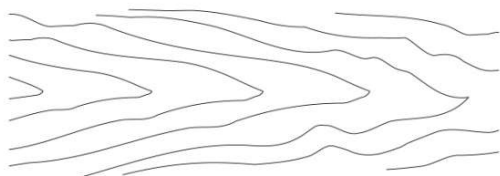


Wide striped

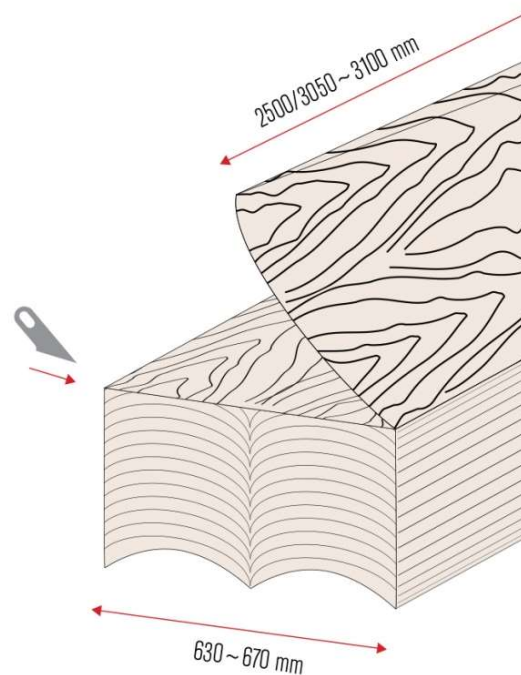
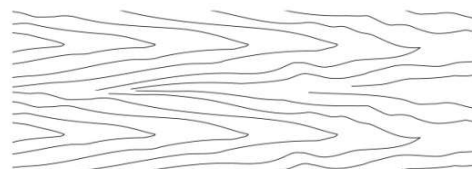


# FIGURES

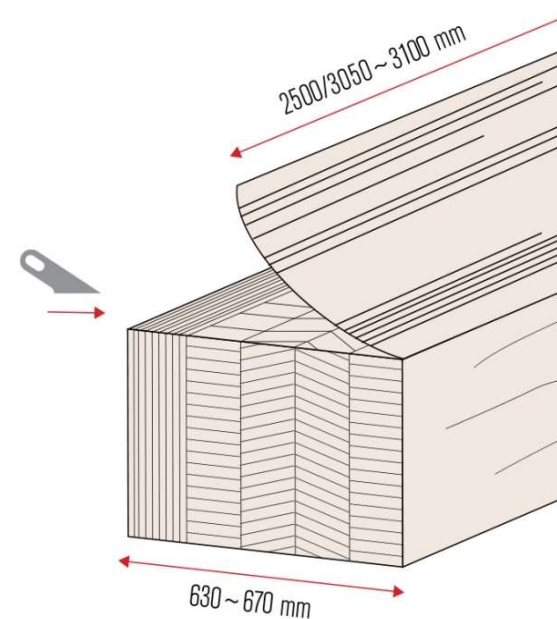
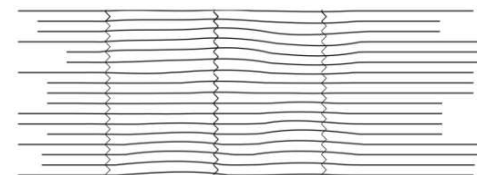
Crown (A/AA/AN)



Two crowns (B-BB)



Geometric pattern







## TABU HAS BEEN FSC® CERTIFIED SINCE 2003

The FSC mark certifies products containing timber from well managed forests according to strict environmental, social and economic standards.

Main aims:

- Responsible management of forests
- Respecting local populations
- Respecting economies





## THE INTERNAL TRACEABILITY SYSTEM OF FSC LOGS

**FSC has developed its own accreditation and labelling system of forest products. It guarantees that each log comes from well-managed forests.**

**TABU has developed an internal traceability system of FSC logs.**



**The mark of  
responsible forestry**

Richiedi i prodotti certificati FSC®  
Ask for certified products FSC®

# RED BOX 555





tabu®





tabu®



tabu®





tabu®

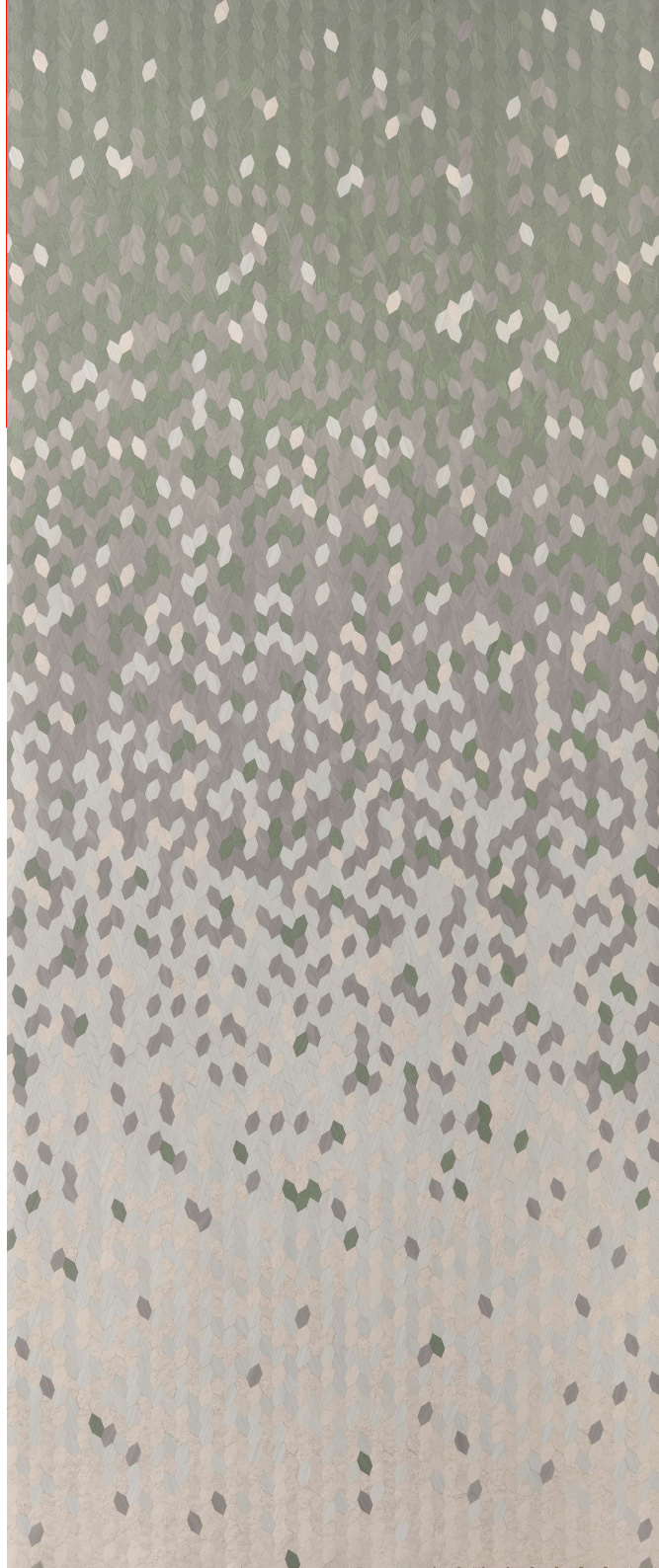


**Inlays**





**tabu**<sup>®</sup>



The ancient art of cabinet making  
revives in the industrial Inlays.

The BURLS Collection consists of 4  
precious Walnut and Ash Burl panels.

In the GRAFFITI Collection, TABU has  
developed sophisticated models using  
Oak, Eucalyptus, Figured Sycamore,  
Bird's Eye Maple, Birch and Tay.

approx. 1260 x 3060 mm



**tabu®**



tabu®



**3D surfaces**





**tabu<sup>®</sup>**

## THE STRUCTURED-EXPRESSIVE SURFACE

**GRUOY**

New and fascinating surfaces are proposed in 14 3D structures. The 1,0/1,1 mm-thickness panel is the result of the veneers lamination process.

The panels are available in two sizes 1250 x 2500 mm and 1250 x 3050 mm depending on the type of design.

**tabu<sup>®</sup>**





**tabu**<sup>®</sup>





**tabu®**



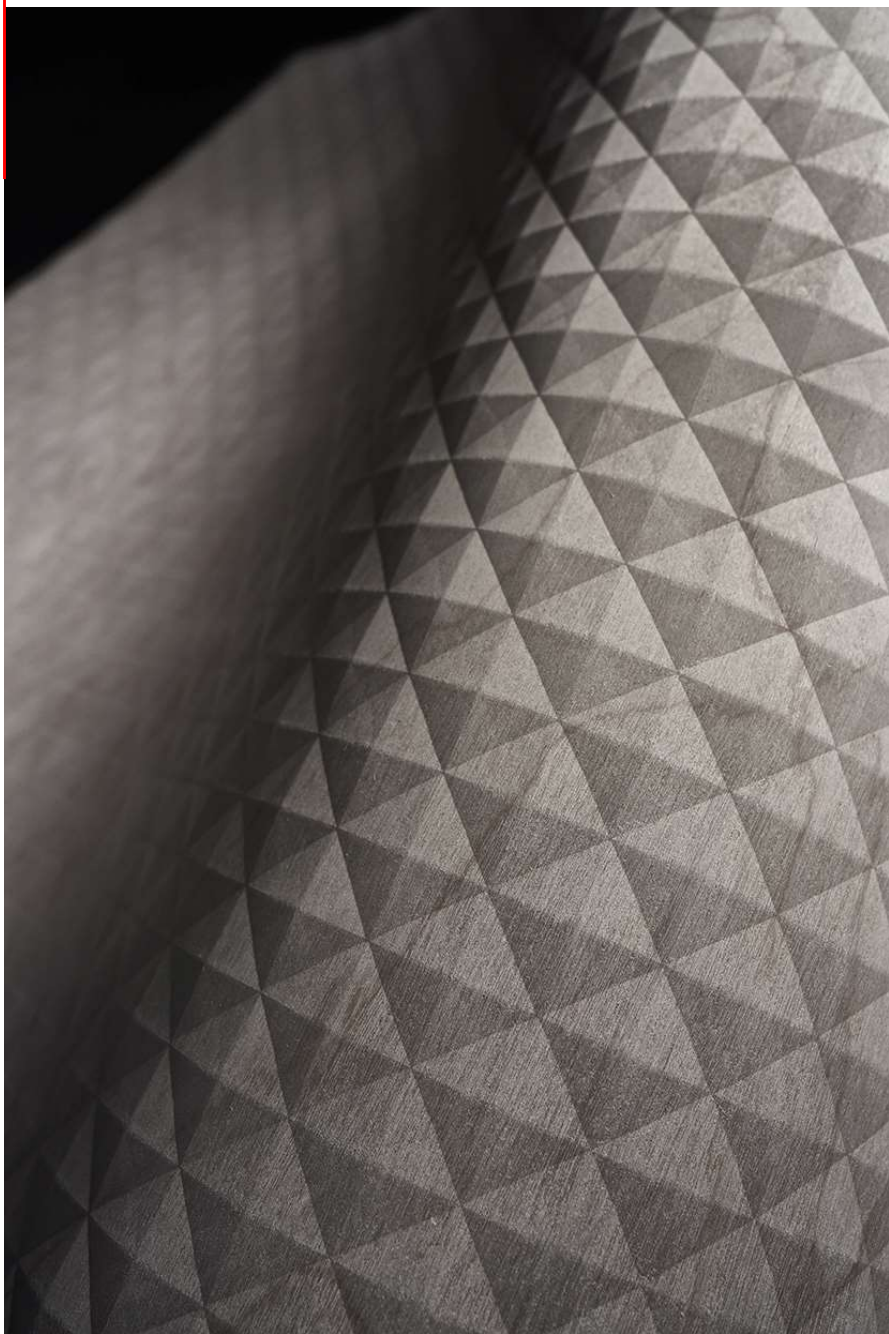


**tabu<sup>®</sup>**



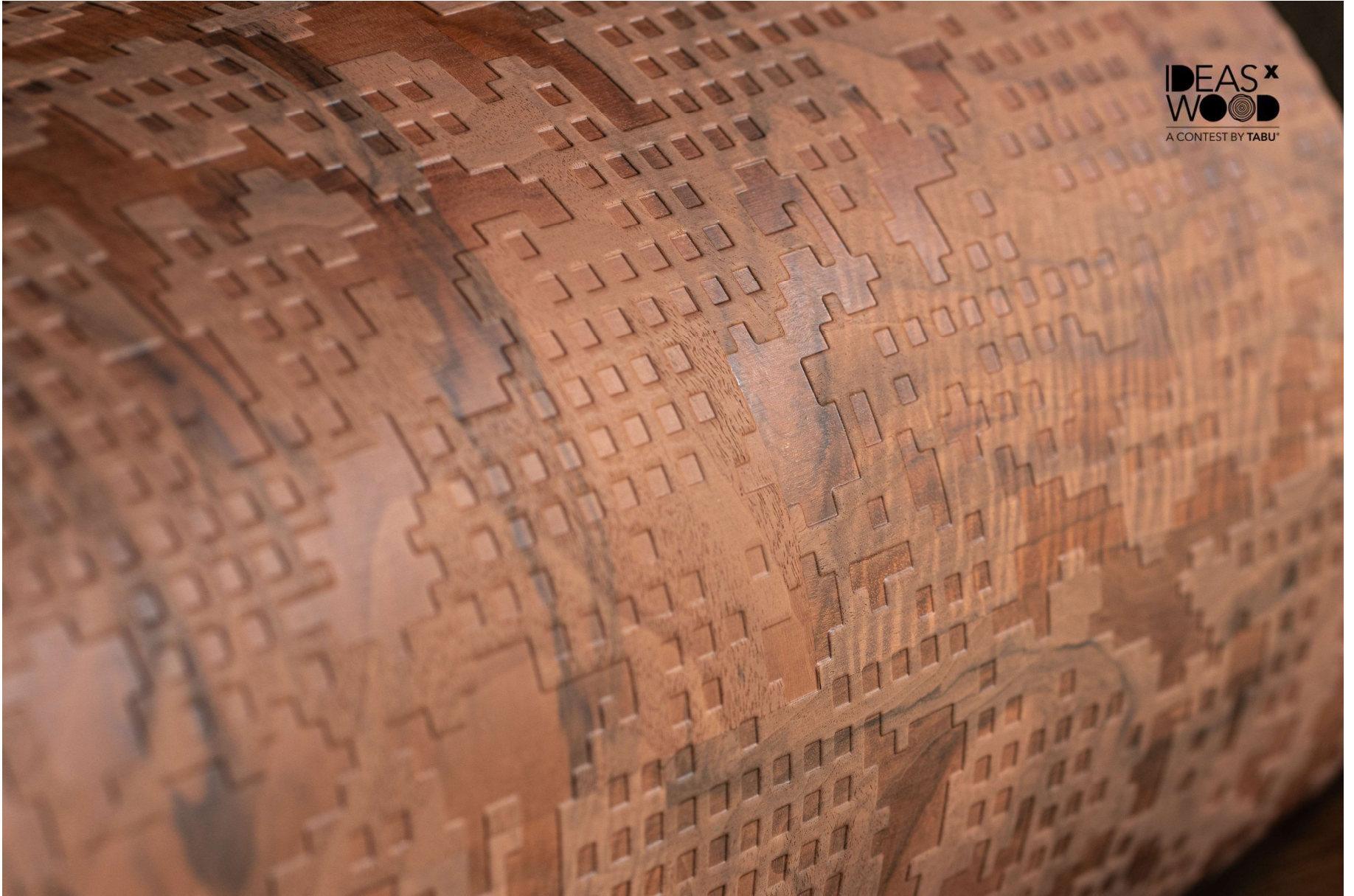


**tabu<sup>®</sup>**





tabu®



IDEAS<sup>x</sup>  
WOOD  
A CONTEST BY TABU®



**tabu<sup>®</sup>**



**IDEAS<sup>x</sup>**  
**WOOD**  
A CONTEST BY **TABU<sup>®</sup>**



**Skeens Tabu Boiserie**

tabu®



SKREENS  
TABU BOISERIE



tabu®

<https://skeens.it/>

NEWS

COLLEZIONE

CASA TABU MILANO

L'OFFICINA DEI SARTI

INFO TECNICHE

AREA STAMPA

CONTATTI

IT EN



<https://skeens.it/>

# SKEENS

T A B U B O I S E R I E

00

**MENTIONE D'ONORE DEL  
COMPASSO D'ORO 2022  
PER 3 DECORI SKEENS**

+

**Milano Brera**

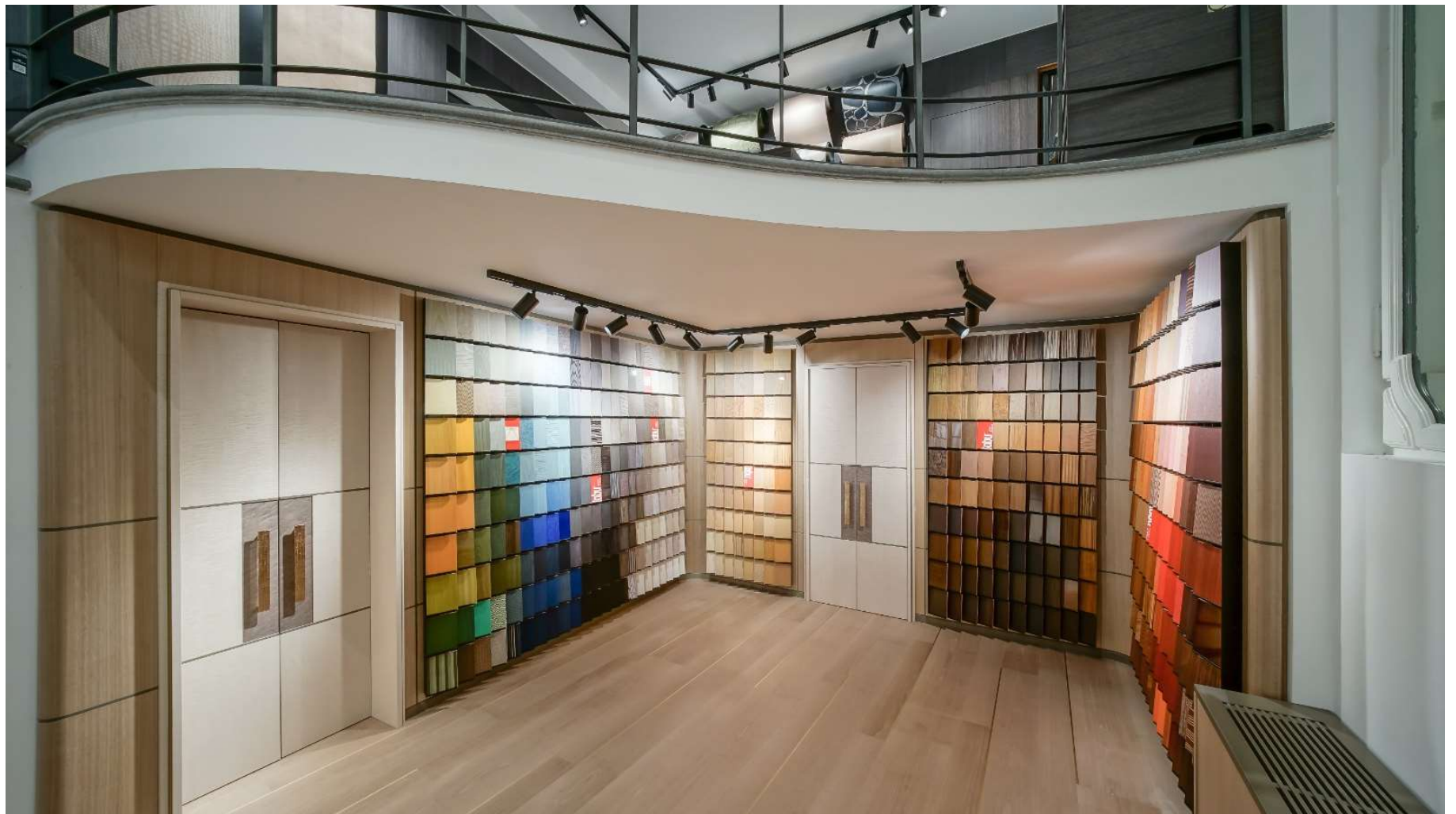


**tabu**<sup>®</sup>

Our Milanese “home”, where you will find exposed the best of our collections and where you will be welcomed in an elegant home.



tabu®





tabu®



**tabu<sup>®</sup>**

**CASA TABU MILANO BRERA**





tabu®



tabu®



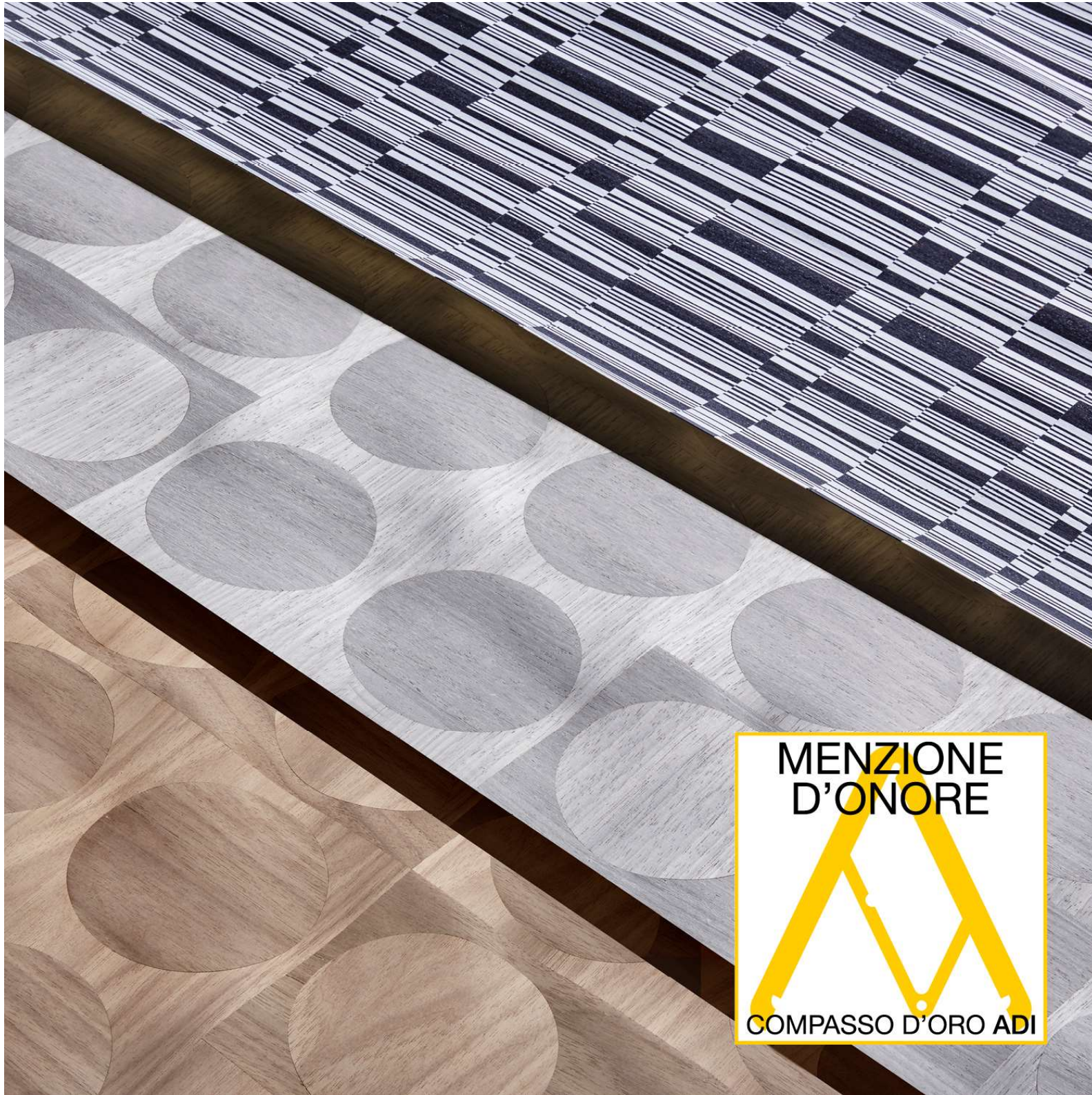


The logo for 'tabu' is written in a bold, lowercase, sans-serif font. A registered trademark symbol (®) is located to the upper right of the letter 'u'. The logo is positioned in the top left corner of the page, with a thin red vertical line extending upwards from the top of the 'u'.A thick red vertical bar is located on the left side of the page, extending from the top of the 'tabu' logo down to the bottom of the page.

R E T H I N K I N G  
T H E ——— F U T U R E

Anthology One

Use or rational and appropriate reuse of all resources during all phases of the production cycle



**MENZIONE  
D'ONORE**



**COMPASSO D'ORO ADI**



**tabu**<sup>®</sup>

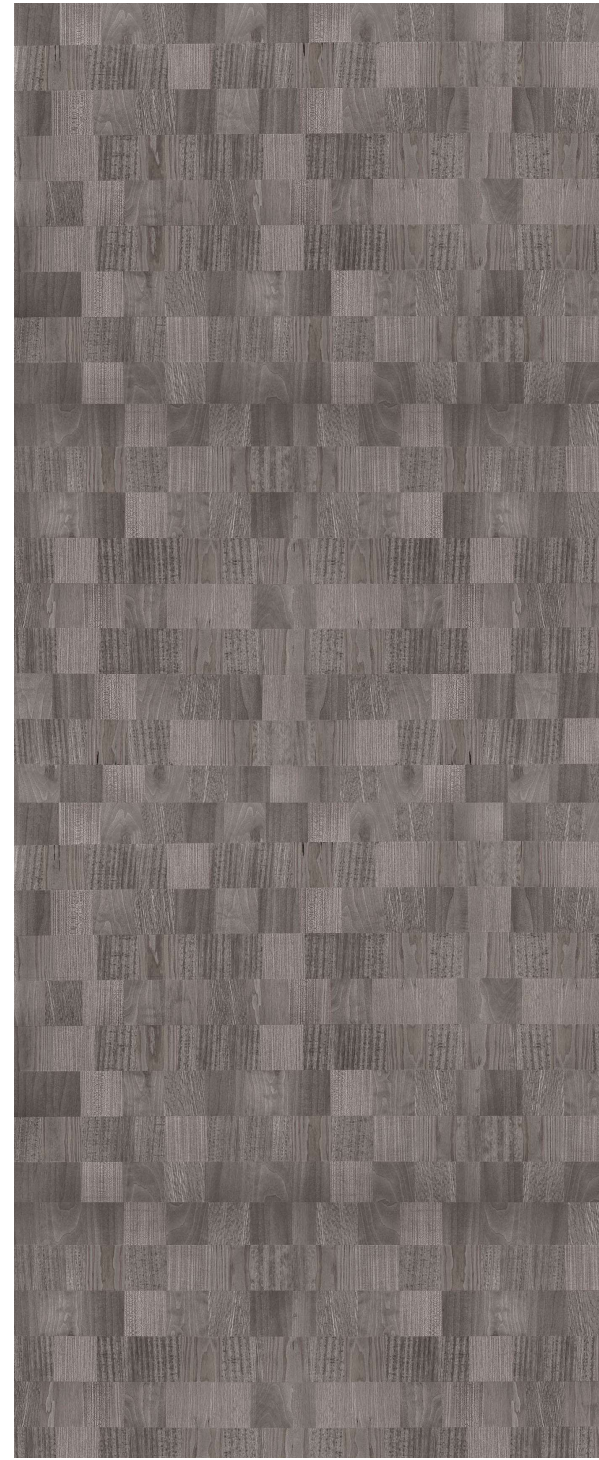
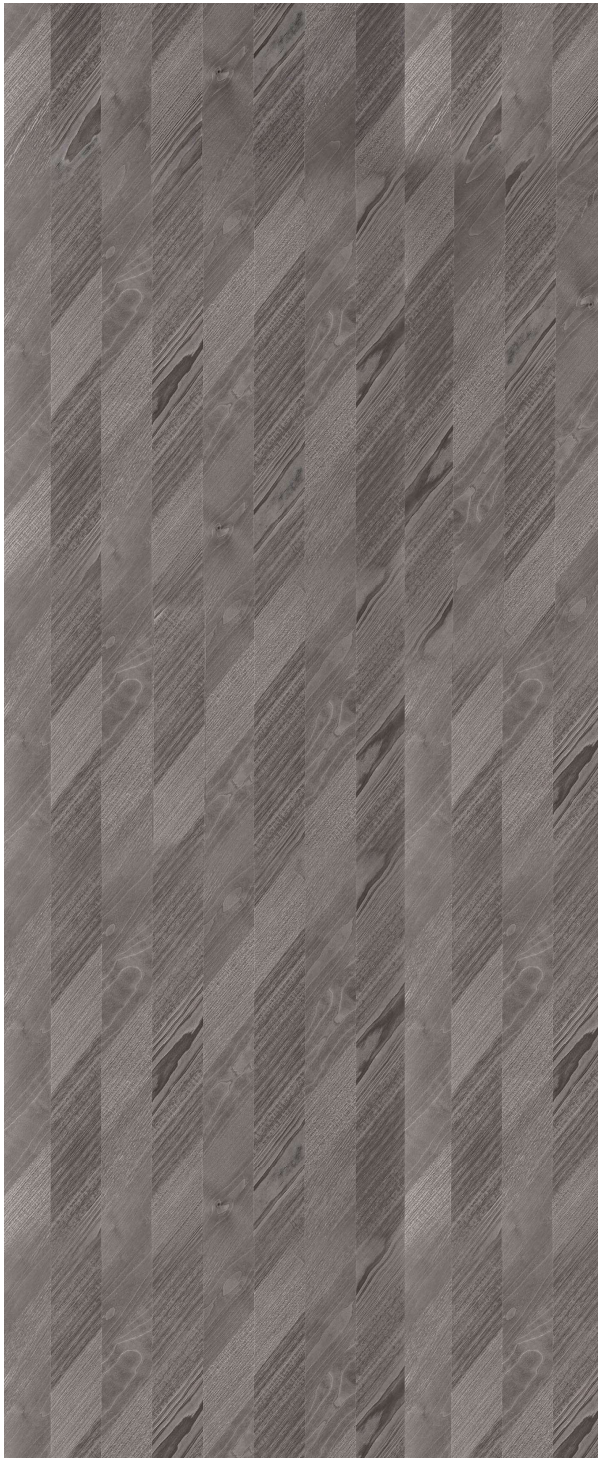
The industrial inlay **Biodiversity**







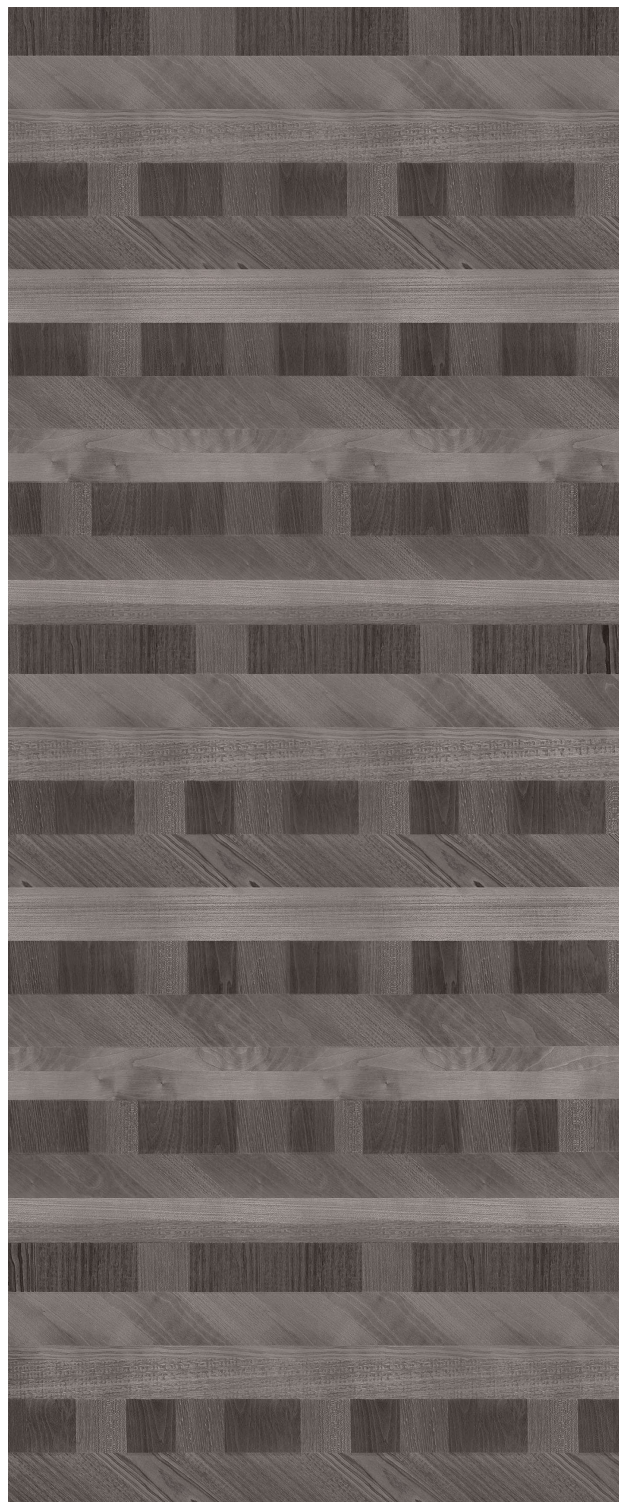
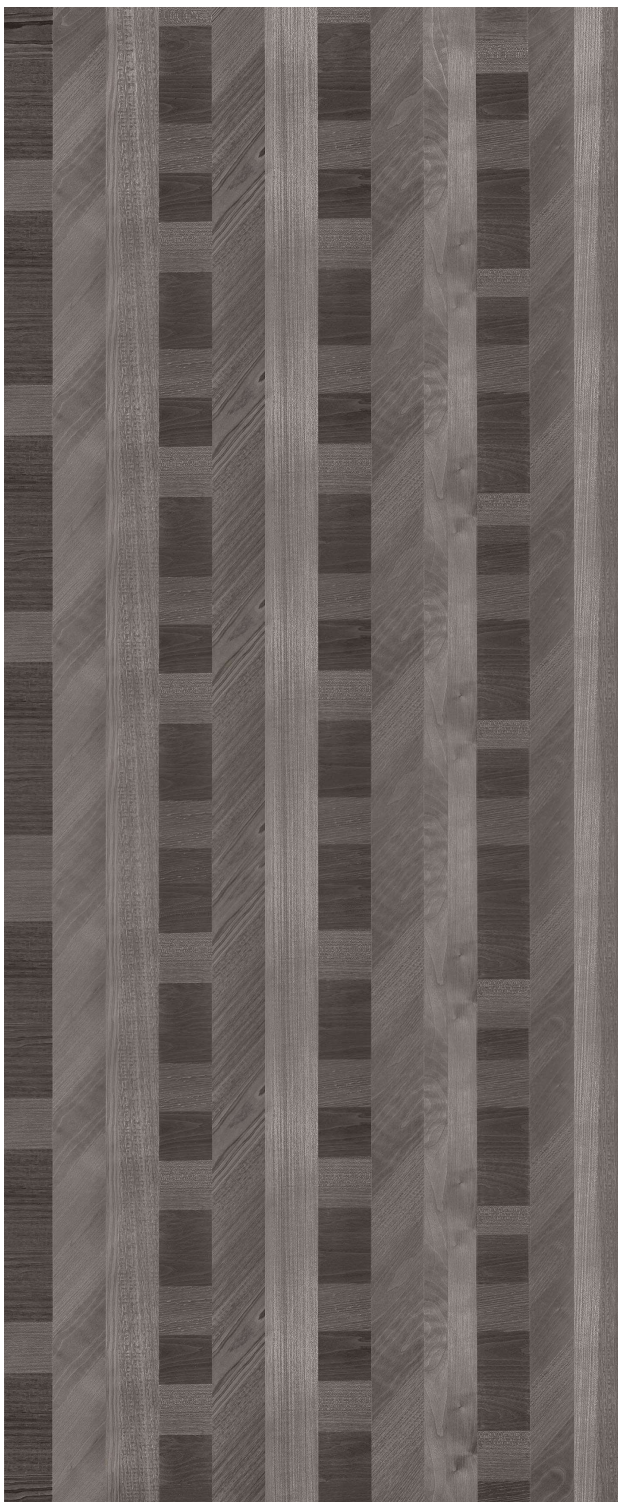
tabu®



The industrial inlay **Biodiversity** was born from the idea of promoting scraps and unsold products: **the use of raw materials, known as “secondary”, of 12 different wood species** as an input of the productive process underlines the attention to the themes of circularity and sustainability.



**tabu<sup>®</sup>**





**tabu<sup>®</sup>**





**tabu<sup>®</sup>**

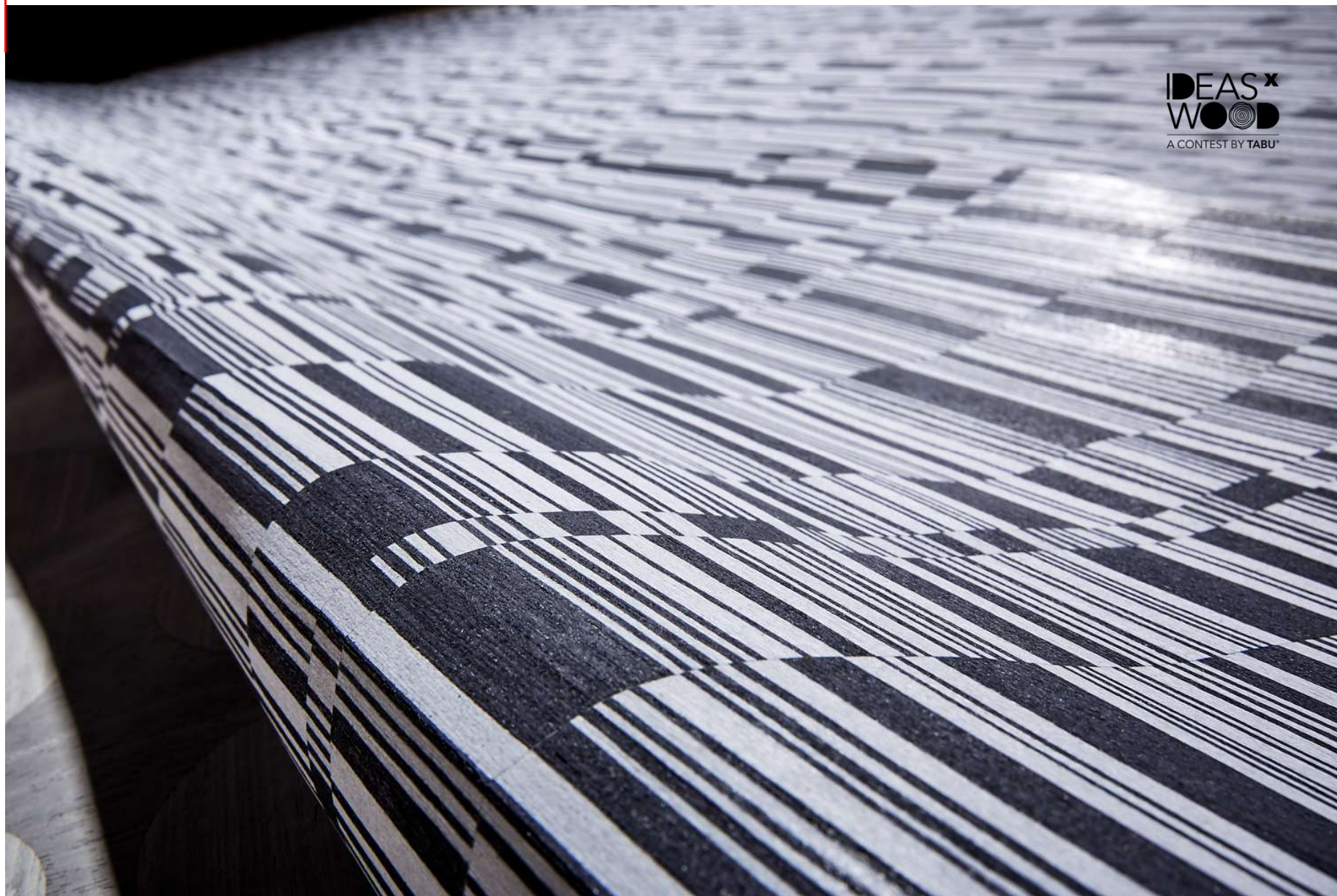


**IDEAS<sup>x</sup>**  
**WOOD**  
A CONTEST BY TABU<sup>®</sup>



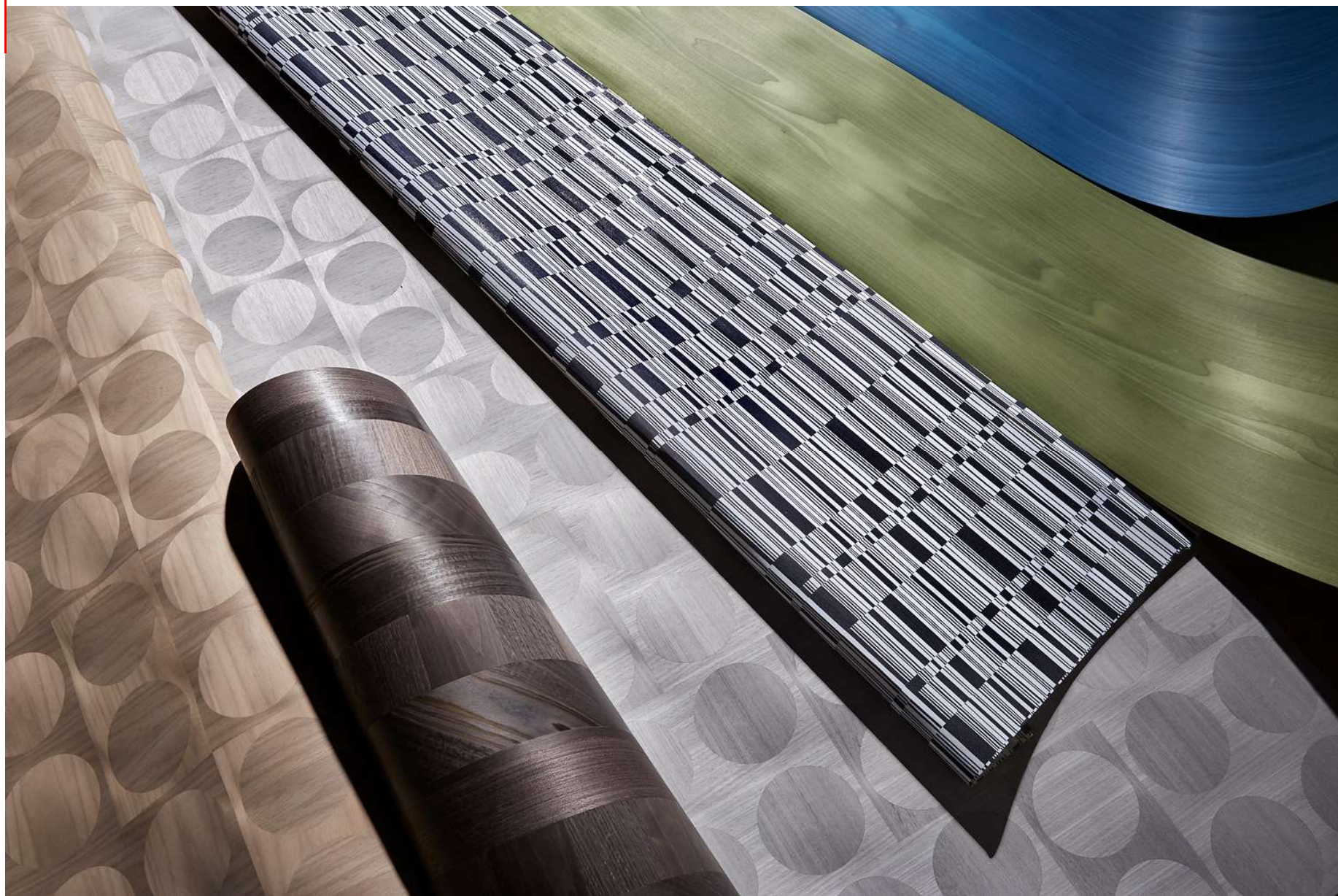
**tabu<sup>®</sup>**

**IDEAS<sup>x</sup>**  
**WOOD**  
A CONTEST BY TABU<sup>®</sup>



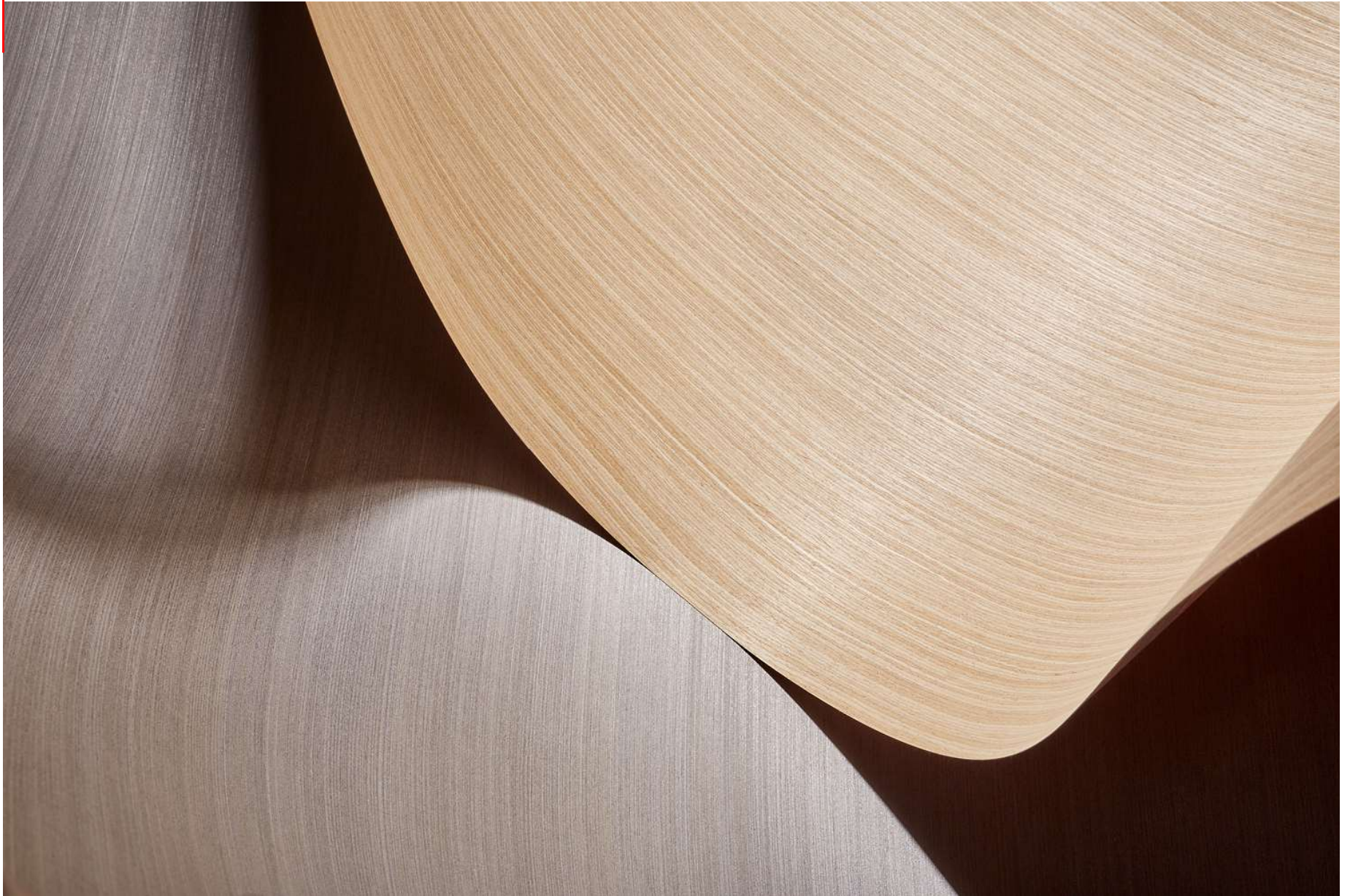


**tabu®**





**tabu®**



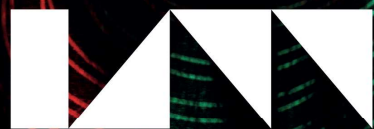


**tabu®**



**Contest**  
**IDEAS4WOOD**





**Ideas 4 Wood  
Contest by Tabu®  
VI Edition 23.24**

Ogni progetto conterà. Il tuo progetto conterà. Sii ispirato. Sii grande. Dimostra il tuo valore.  
Every project will count. Your project will count. Be inspired. Get excited. And show the world how it's done.

BANDO | COMPETITION NOTICE

[www.i4w.it](http://www.i4w.it)

Termine di consegna: 12 Giugno 2024  
Premiazione: Settembre 2024 - Milano  
Montepremi: € 15.000,00

IDEAS 4 WOOD è il Contest più importante al mondo nel settore del legno: una gara di idee rivolta sia agli studenti universitari che ai progettisti, annuale e internazionale. È un progetto programmato per sostenere la conoscenza del legno e alla sua valorizzazione di materia prima nobile, viva e rinnovabile. Nata a Cantù (CO) nel 1927, TABU Spa è l'eccellenza italiana nella tintoria del legno e produce piallacci naturali tinti e multilaminari per l'Arredo e l'Architettura di Interni, oltre a superfici decorative in legno di ultima generazione (intarsi industriali, superfici tridimensionali e boiserie).

È possibile progettare:

1. **piallacci multilaminari** (650 x 3100 mm)
2. **intarsi** sia con piallacci naturali tinti che con piallacci multilaminari (1260 x 3060 mm)
3. **superfici tridimensionali** (1250 x 2500/3000 mm)
4. **superfici per boiserie di ultima generazione** realizzati in fogli (60 x 3000 mm)
5. **pavimenti in legno**
6. **arredi** (Premio Carpanelli)

Delivery deadline: June 12th 2024  
Award Ceremony: September 2024 - Milan  
Total prize money: € 15.000,00

TABU launches a Contest: a competition of ideas for professionals and university students. Founded in 1927, TABU represents the Italian excellence in the dyeing of wood, it is located in Cantù (between Milan and Como Lake) and it produces dyed natural veneers, multilaminar wood veneers and a selection of dyed textured surfaces for the Furniture and the Interior Design sector (industrial inlays, three dimensional surfaces and boiserie). IDEAS 4 WOOD is a yearly international contest. This is a project with a strong educational impulse designed to support the knowledge of wood.

Topics:

1. **multilaminar wood veneers** (650 x 3100 mm)
2. **inlays** (1260 x 3060 mm)
3. **three-dimensional surfaces** (1250 x 2500/3000 mm)
4. **surfaces for state-of-the-art boiserie** (60 x 3000 mm)
4. **wooden floors**
6. **furniture** (Carpanelli Award)

**IDEAS4WOOD**  
is a competition of  
ideas for university  
students and  
designers regardless  
of age. It's a project  
with a strong  
educational impulse  
designed to support  
the knowledge of  
wood.

Main partner:



Partner:



Media partner:



more info: [i4w.it](http://i4w.it)

**We are CO<sub>2</sub> Neutral**





## **MORE AND MORE ALWAYS LESS**

### **-7% CO<sub>2</sub> emitted into the atmosphere in 2022**

TABU measures a **decrease in its Carbon Footprint** for the year 2022, against an **increase in the total production** of veneers and an increase in staff working hours.

#### **We are carbon neutral:**

we have completely offset the 9,658 tons of CO<sub>2</sub> produced in 2022, and before that in 2021.

We are the first Italian company in the wood sector to declare the environmental impact of its production processes and fully offset its CO<sub>2</sub> emissions with investments in projects for the development of renewable energy.

DISCOVER OUR SUSTAINABILITY PATH

<https://youtu.be/-D6yF6h-bL4>





tabu®

[www.tabu.it](http://www.tabu.it)