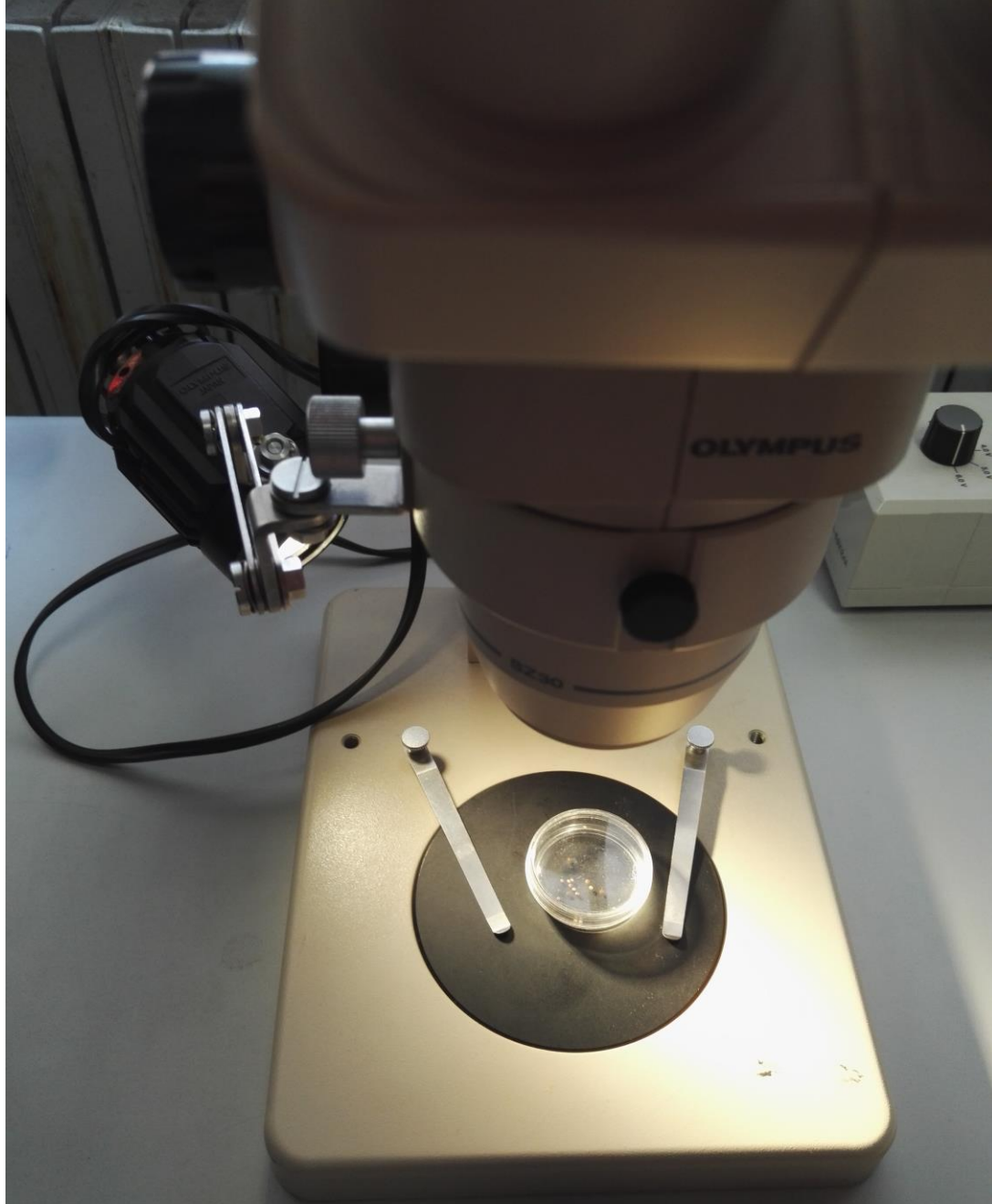
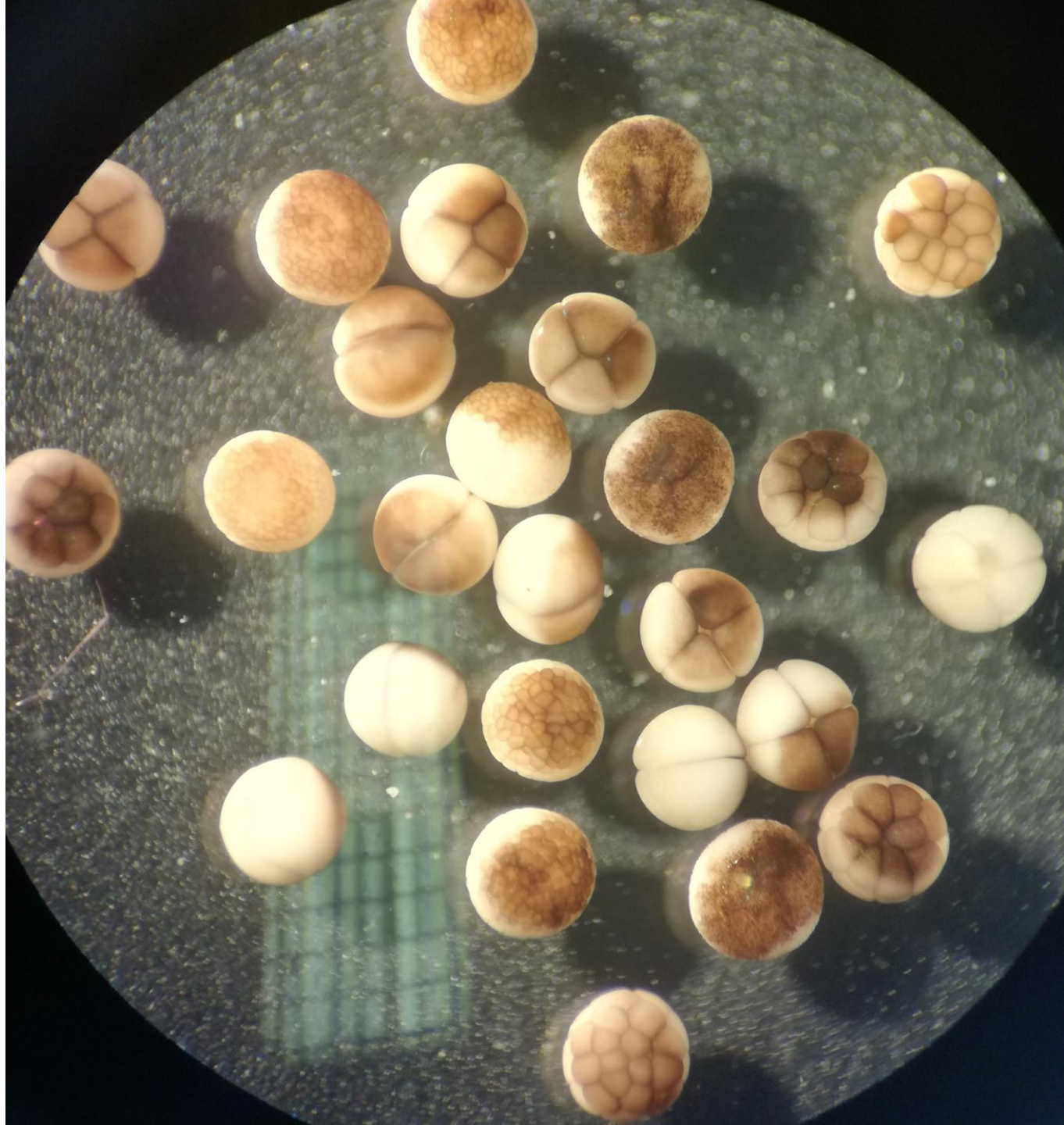


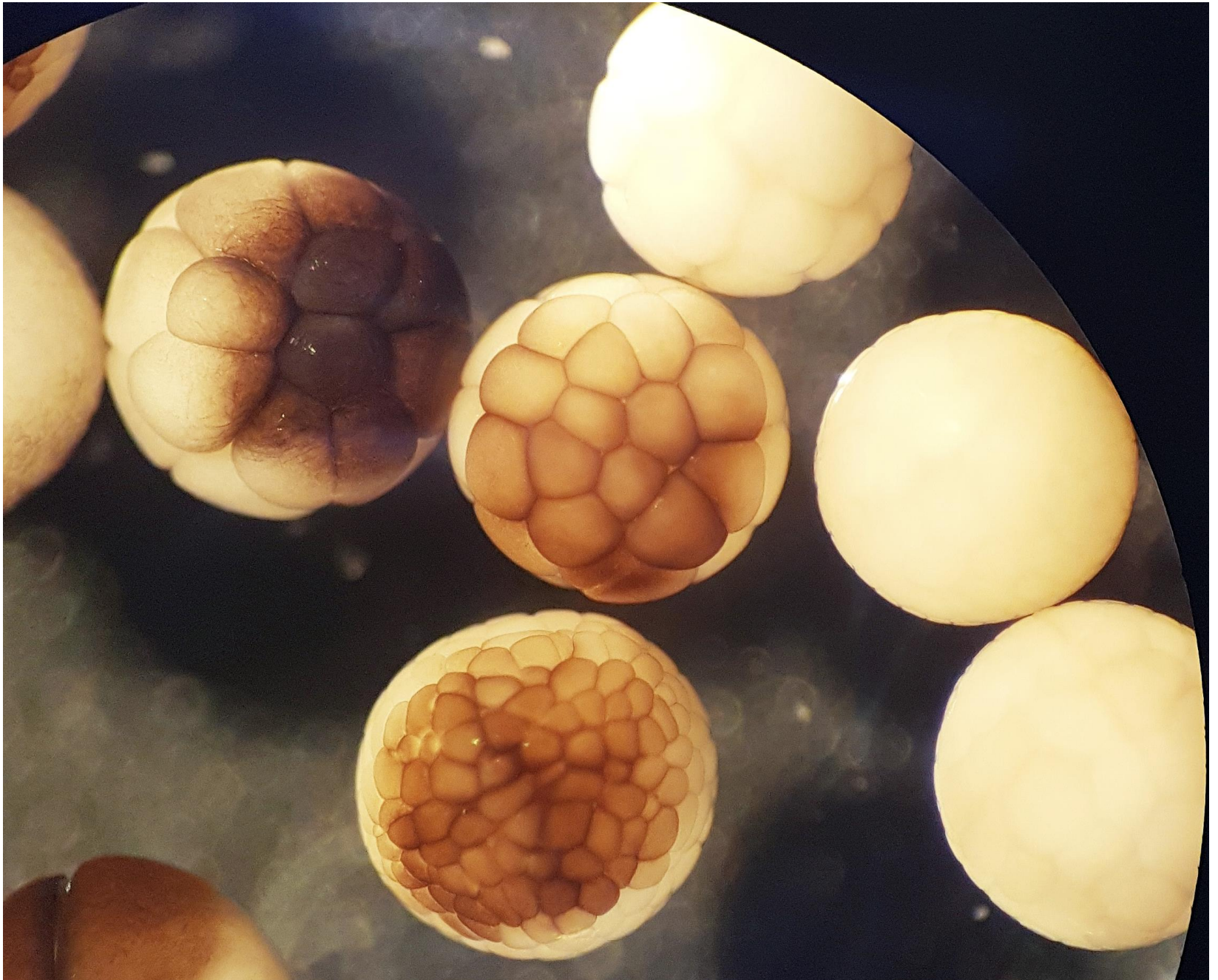
Laboratorio III : Anfibi





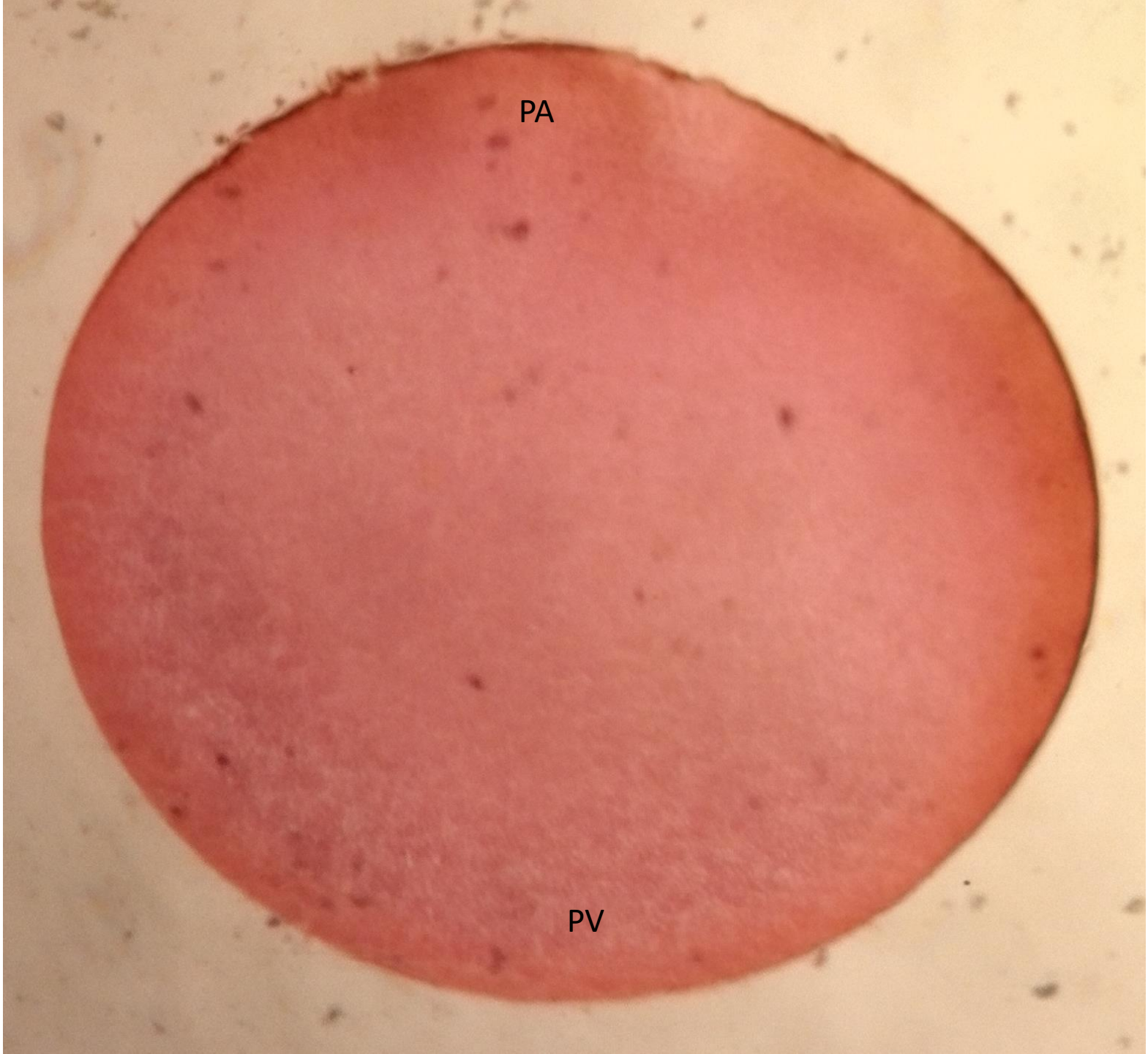






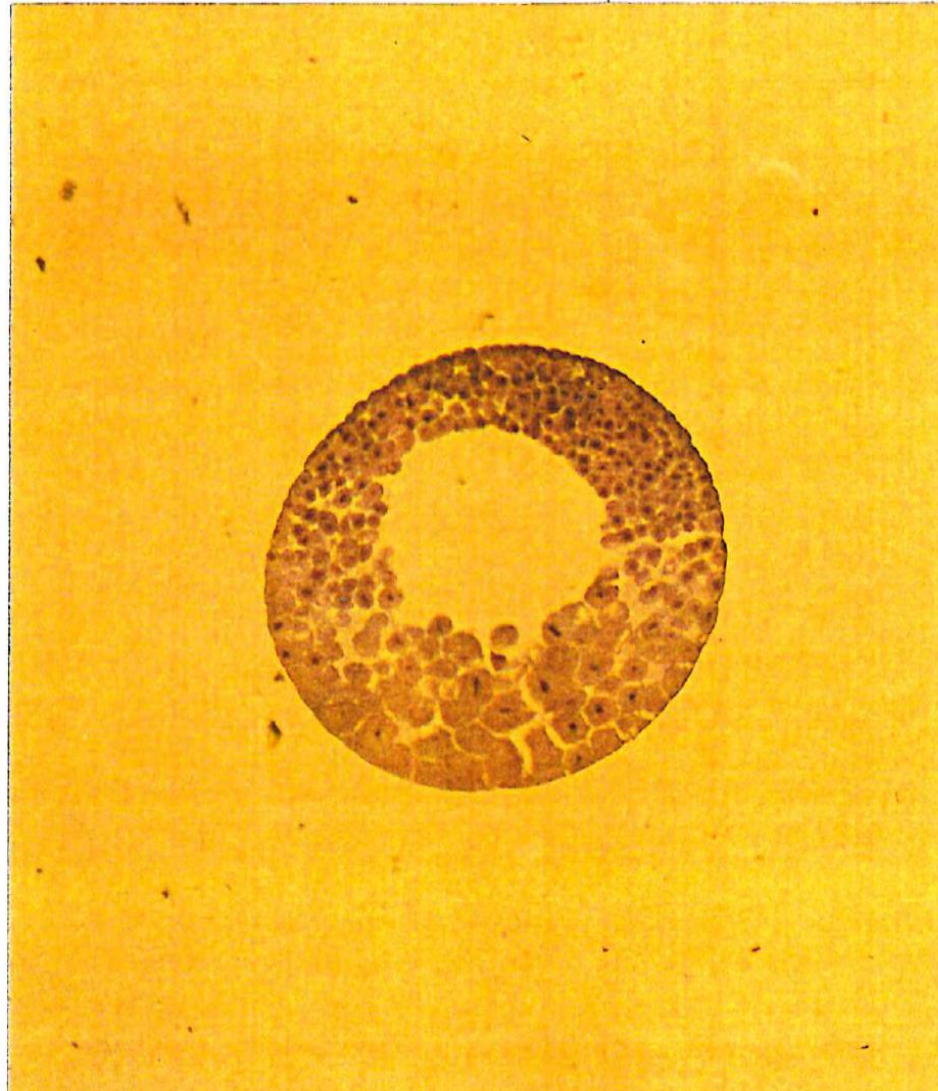
PA

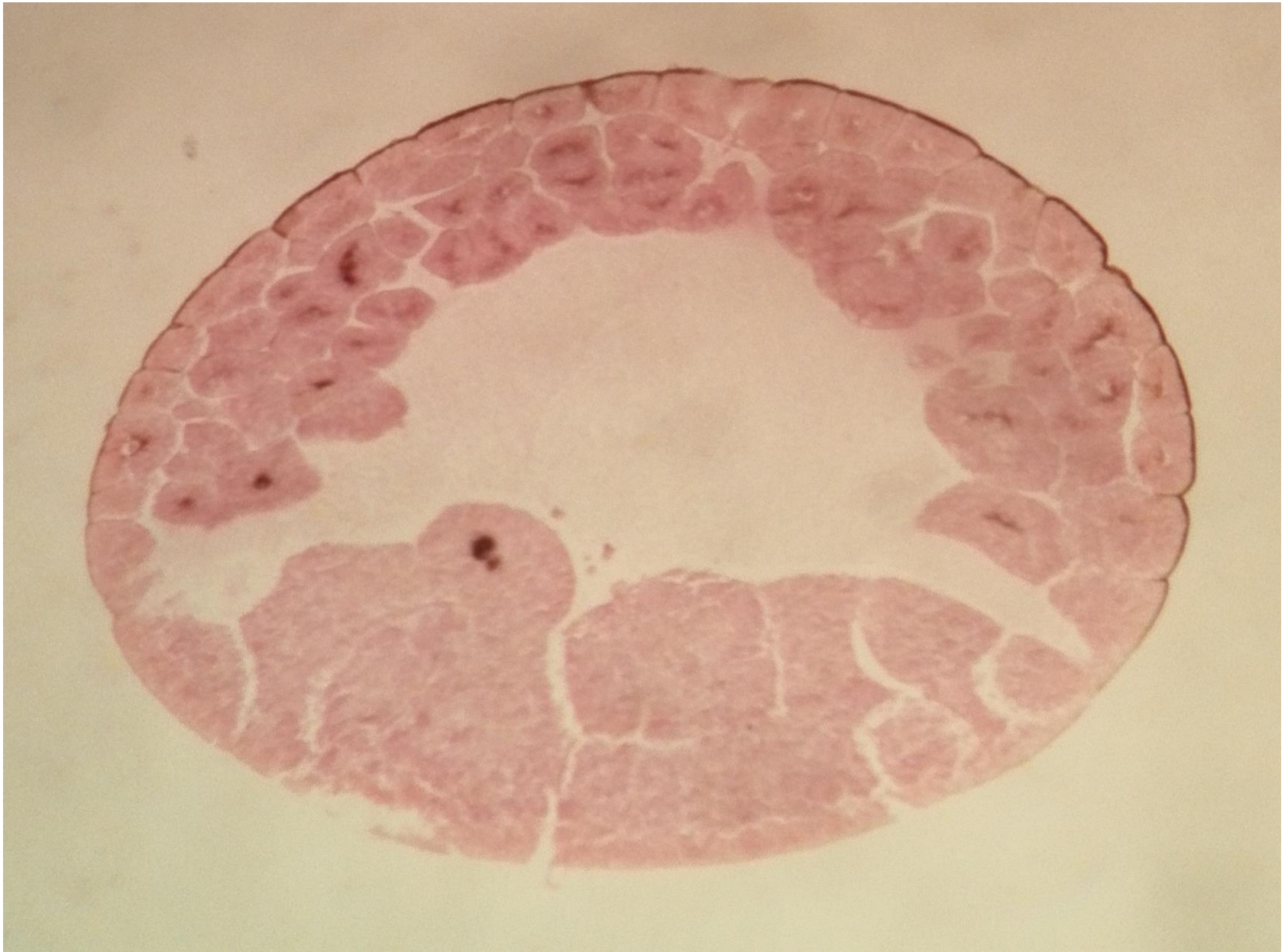
PV

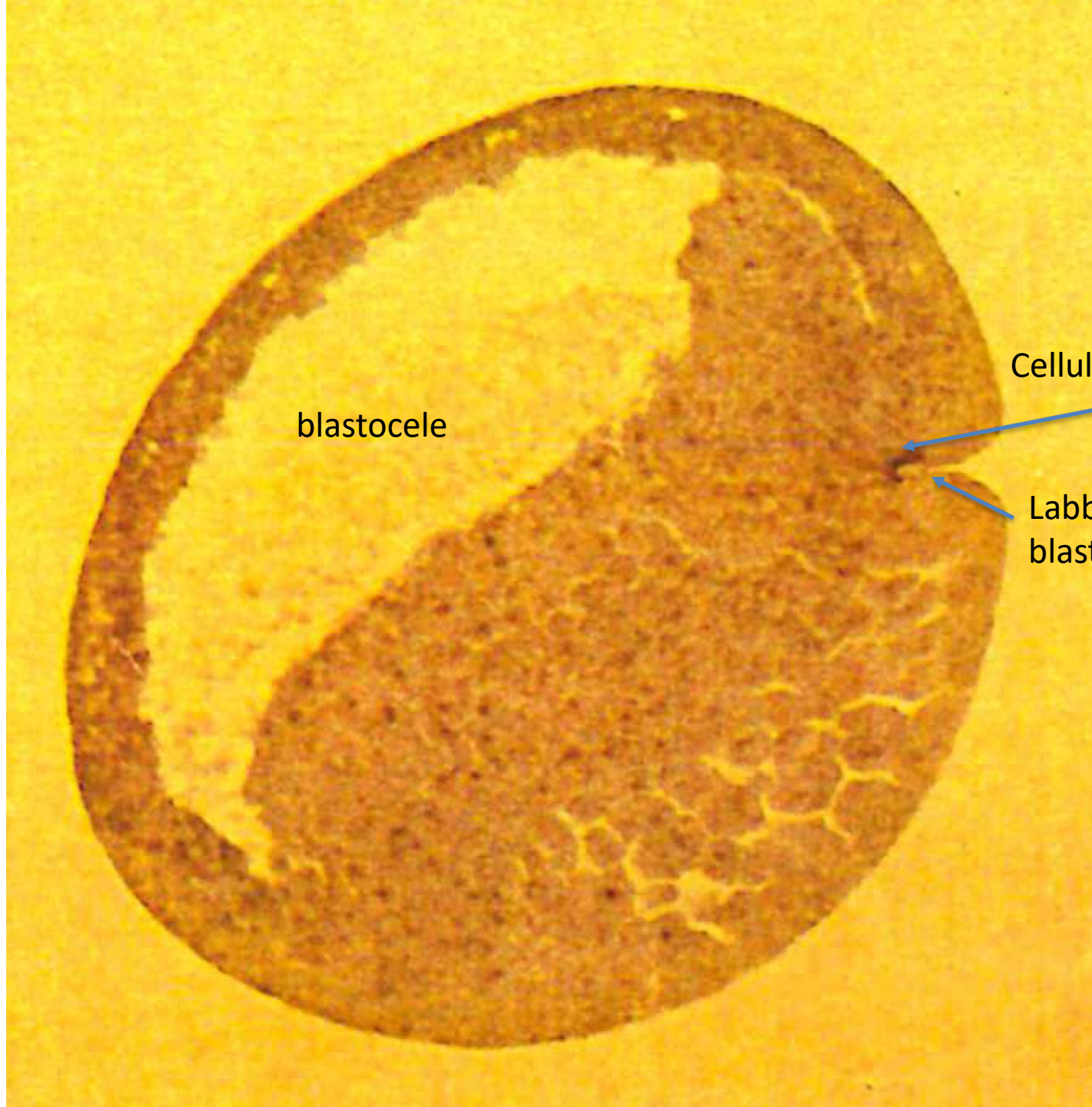




Blastula



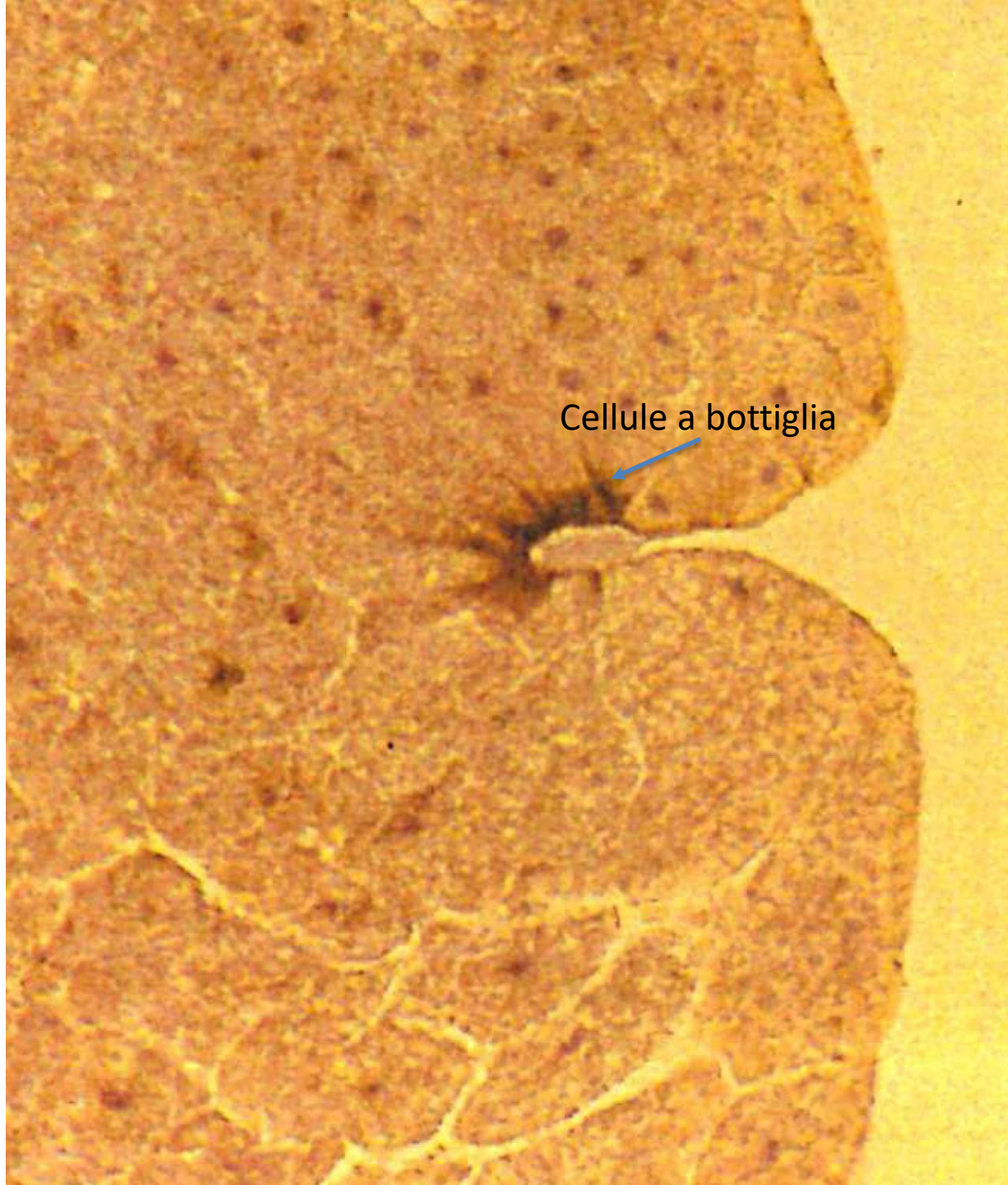




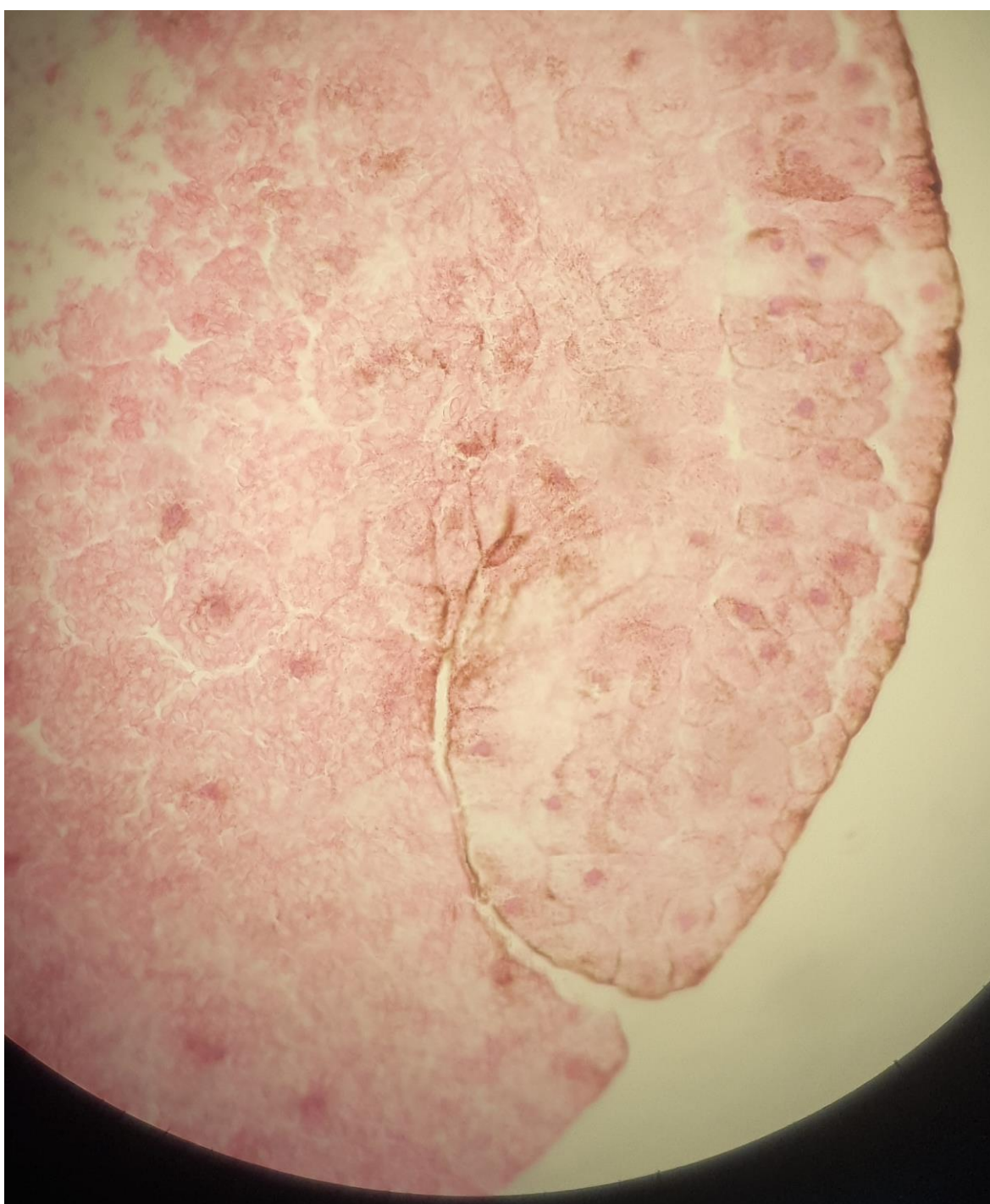
blastocoele

Cellule a bottiglia

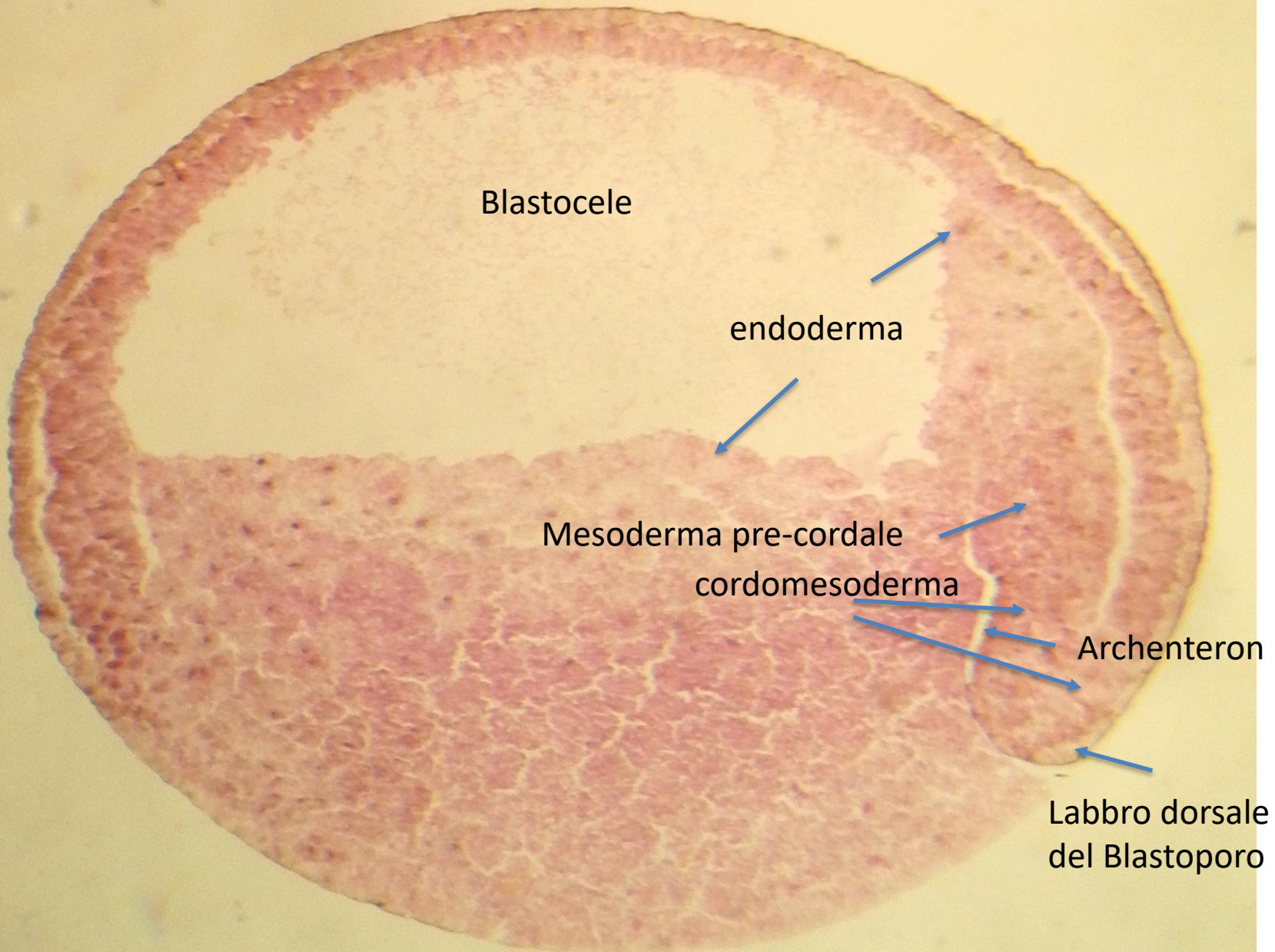
Labbro dorsale
blastoporo



Cellule a bottiglia



Gastrula



Blastocoel

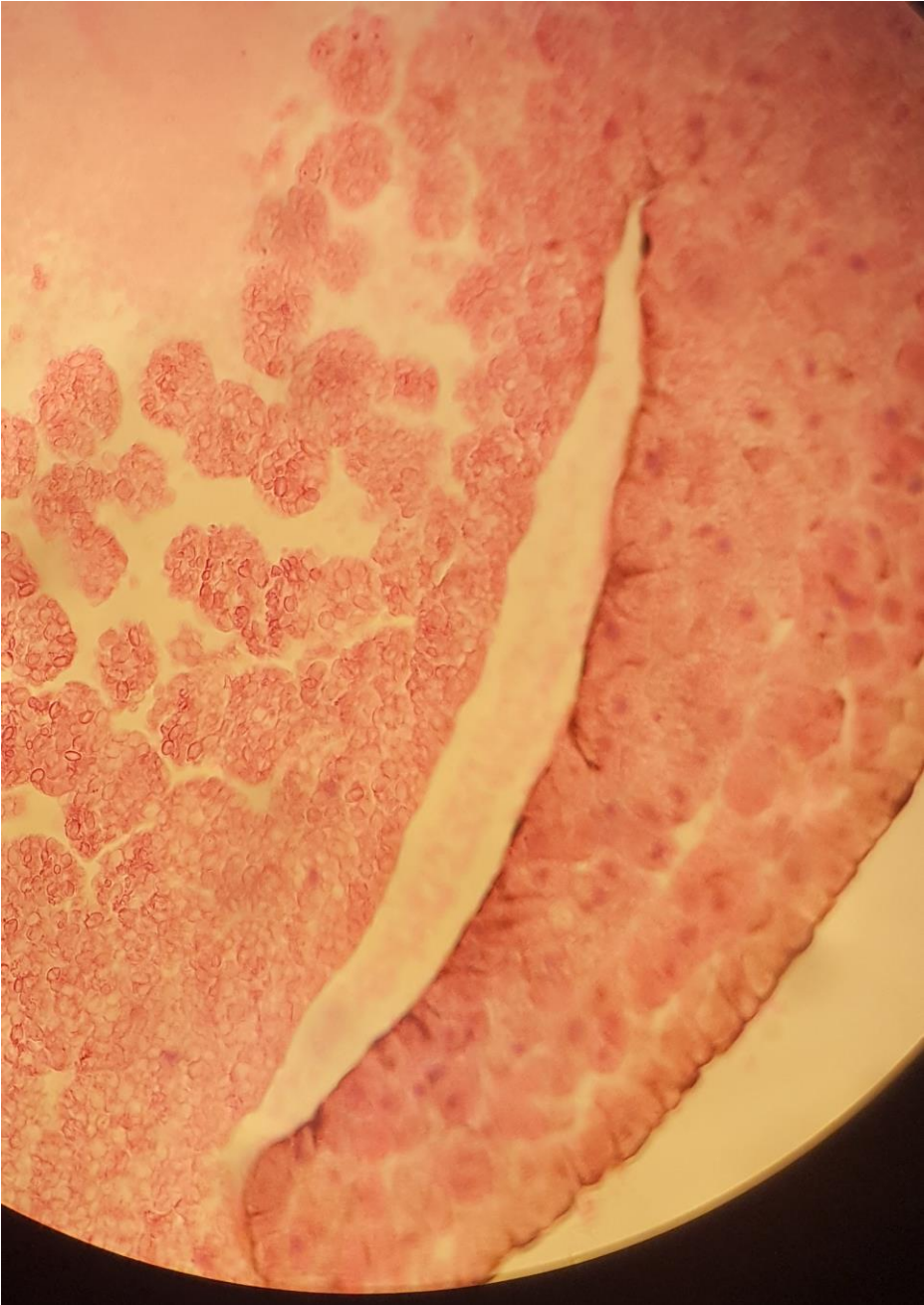
endoderma

Mesoderma pre-cordale

cordomesoderma

Archenteron

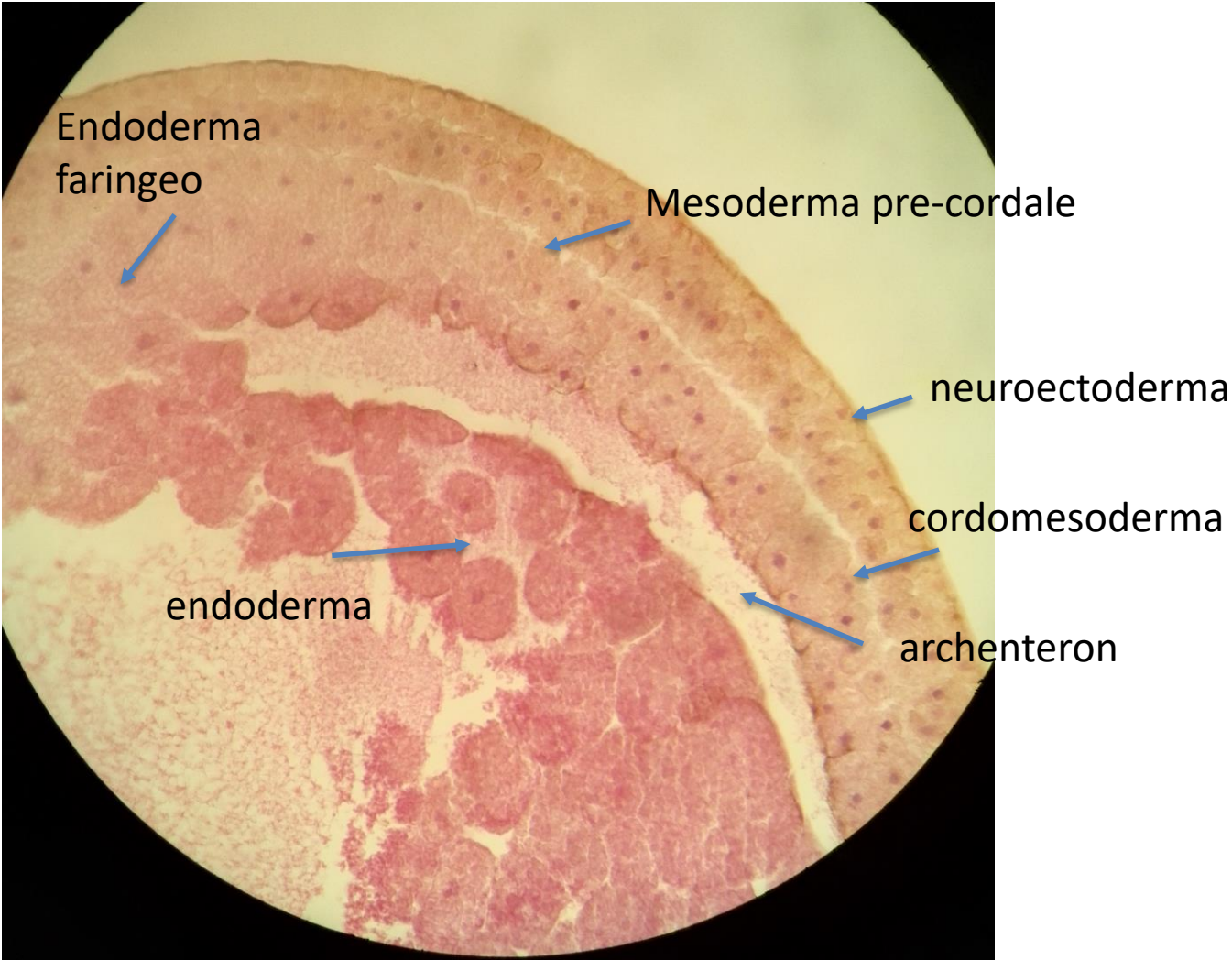
Labbro dorsale del Blastoporo

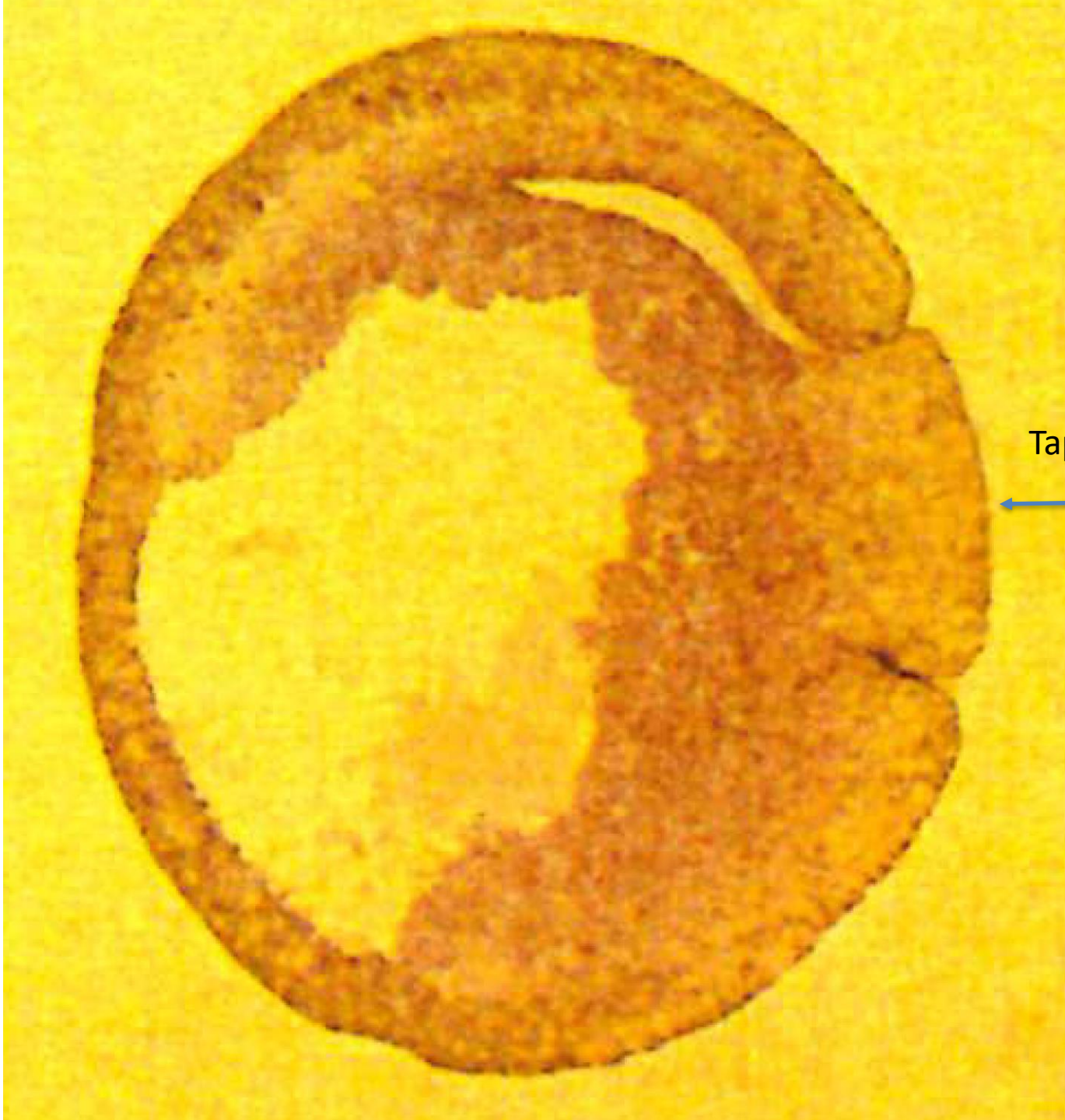




Labbro ventrale blastoporo

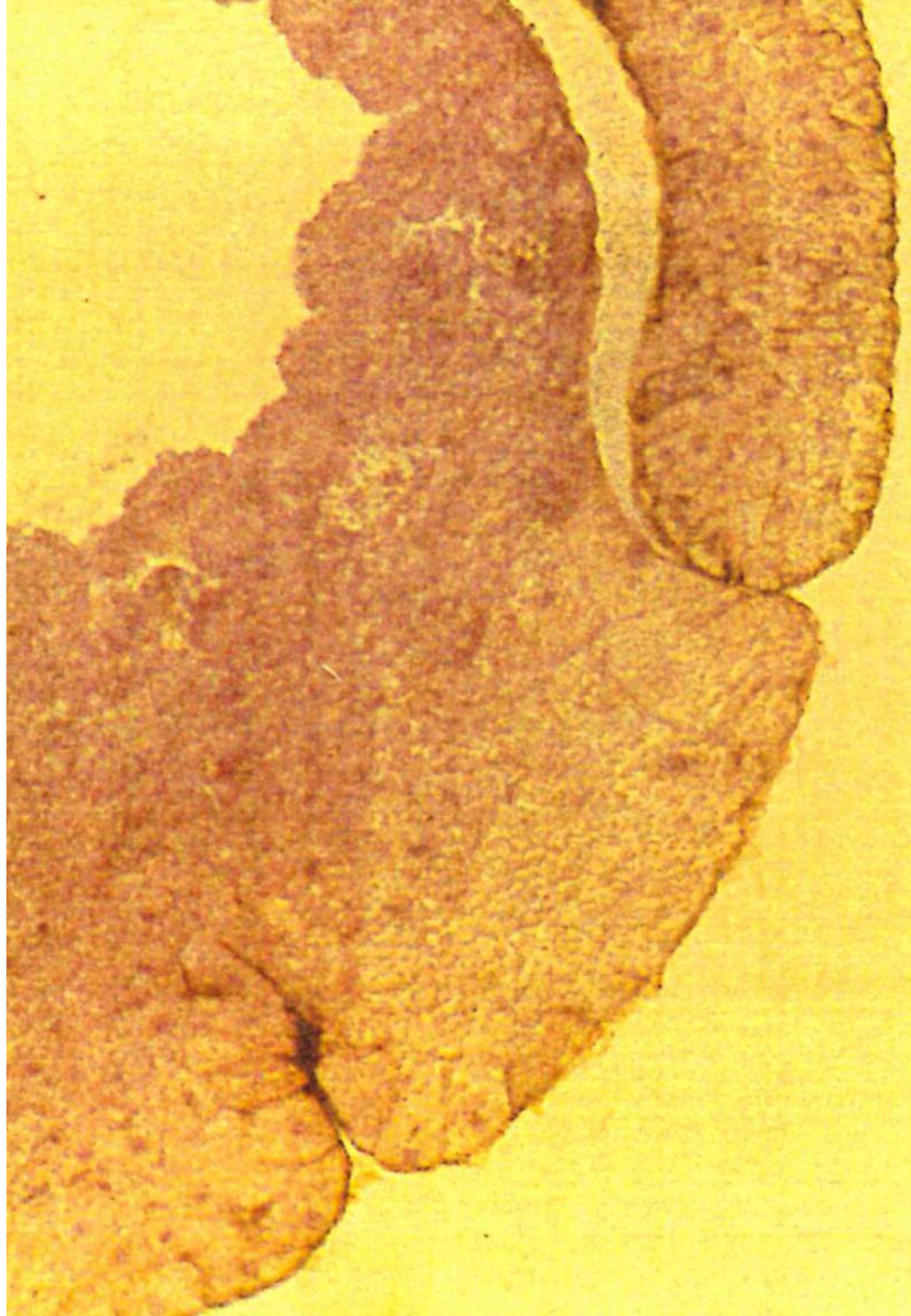


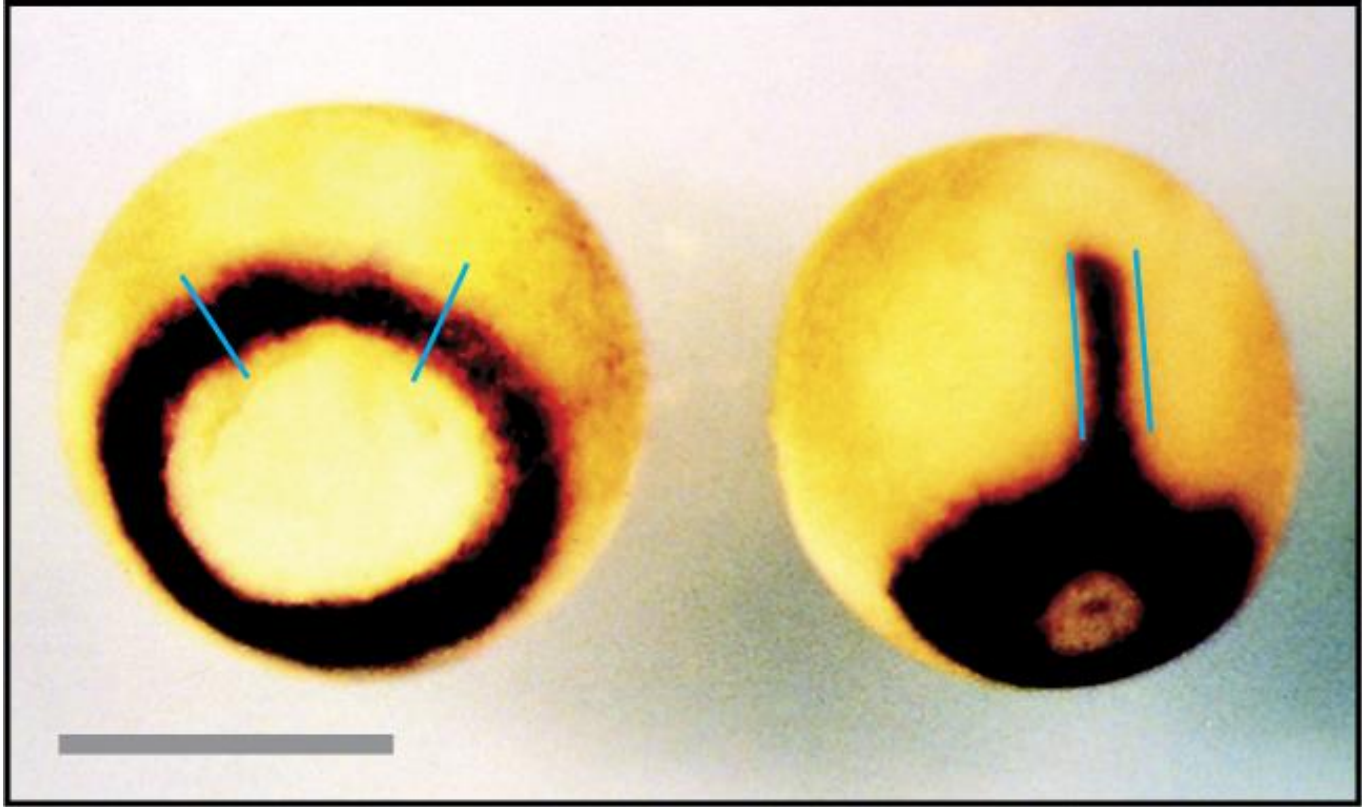


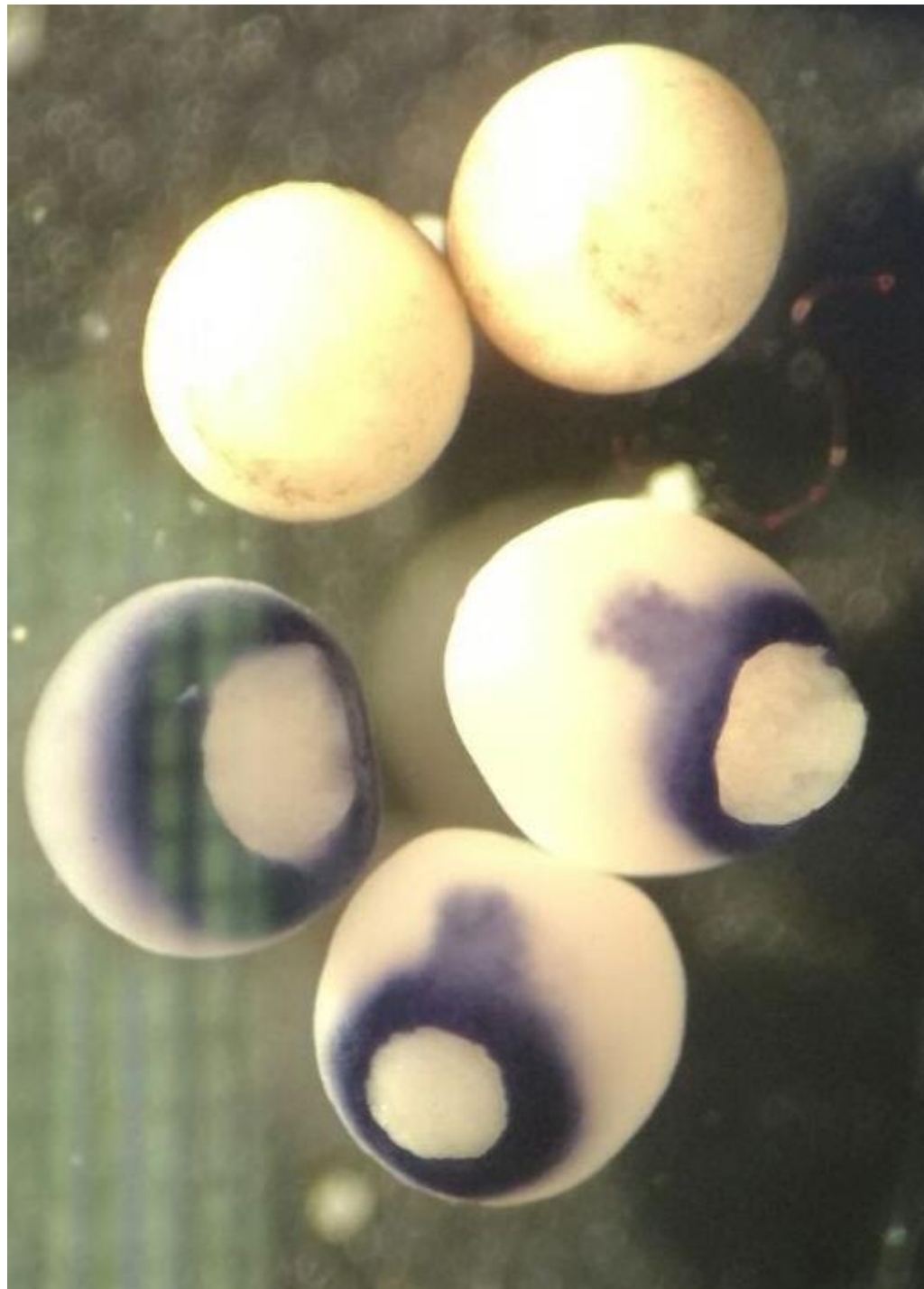


Tappo vitellino





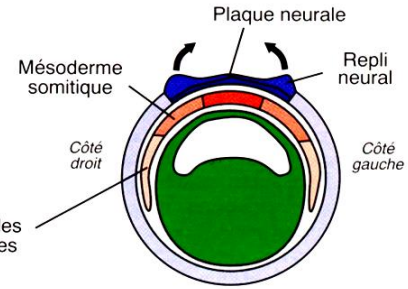
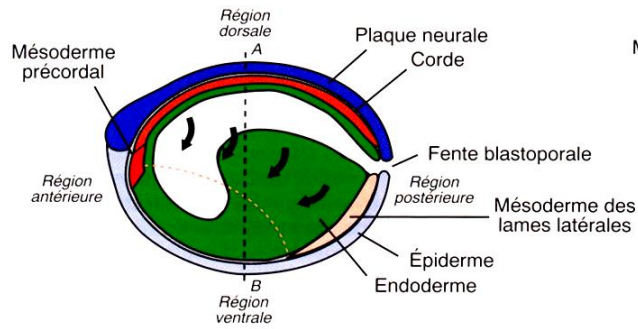




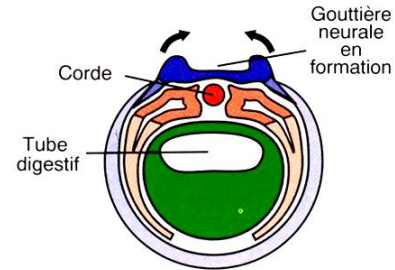
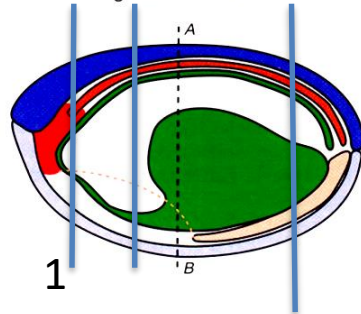
Coupes sagittales

Coupes transversales
(selon les lignes pointillées AB)

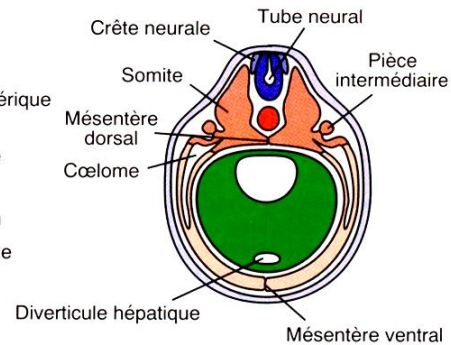
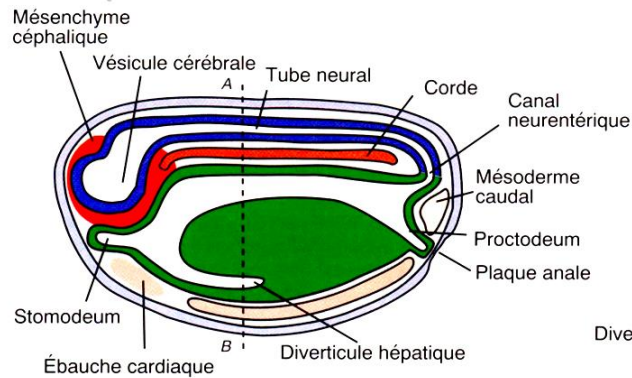
a) Stade de la plaque neurale



b) Stade de la gouttière neurale



c) Stade du tube neural



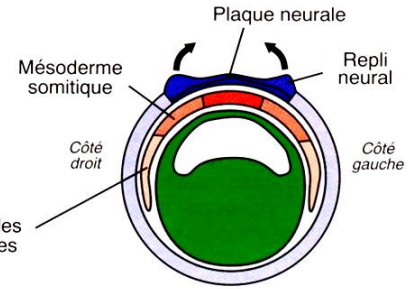
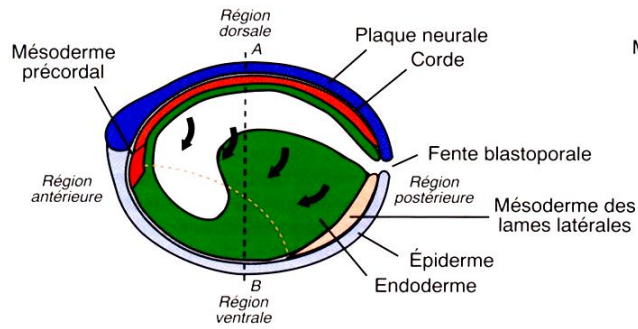




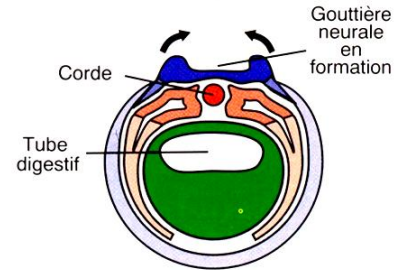
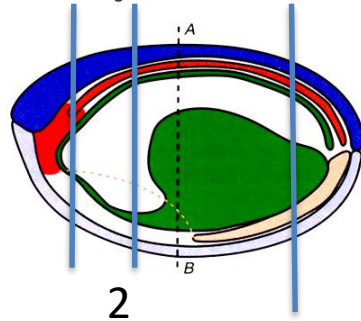
Coupes sagittales

Coupes transversales
(selon les lignes pointillées AB)

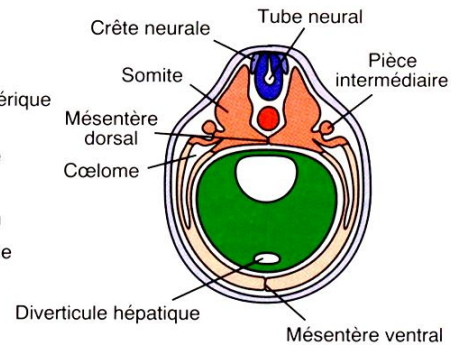
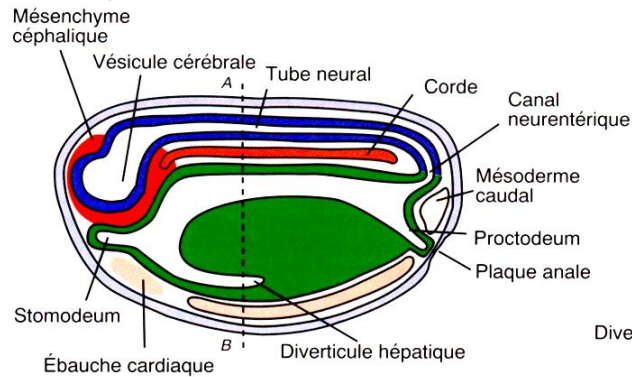
a) Stade de la plaque neurale



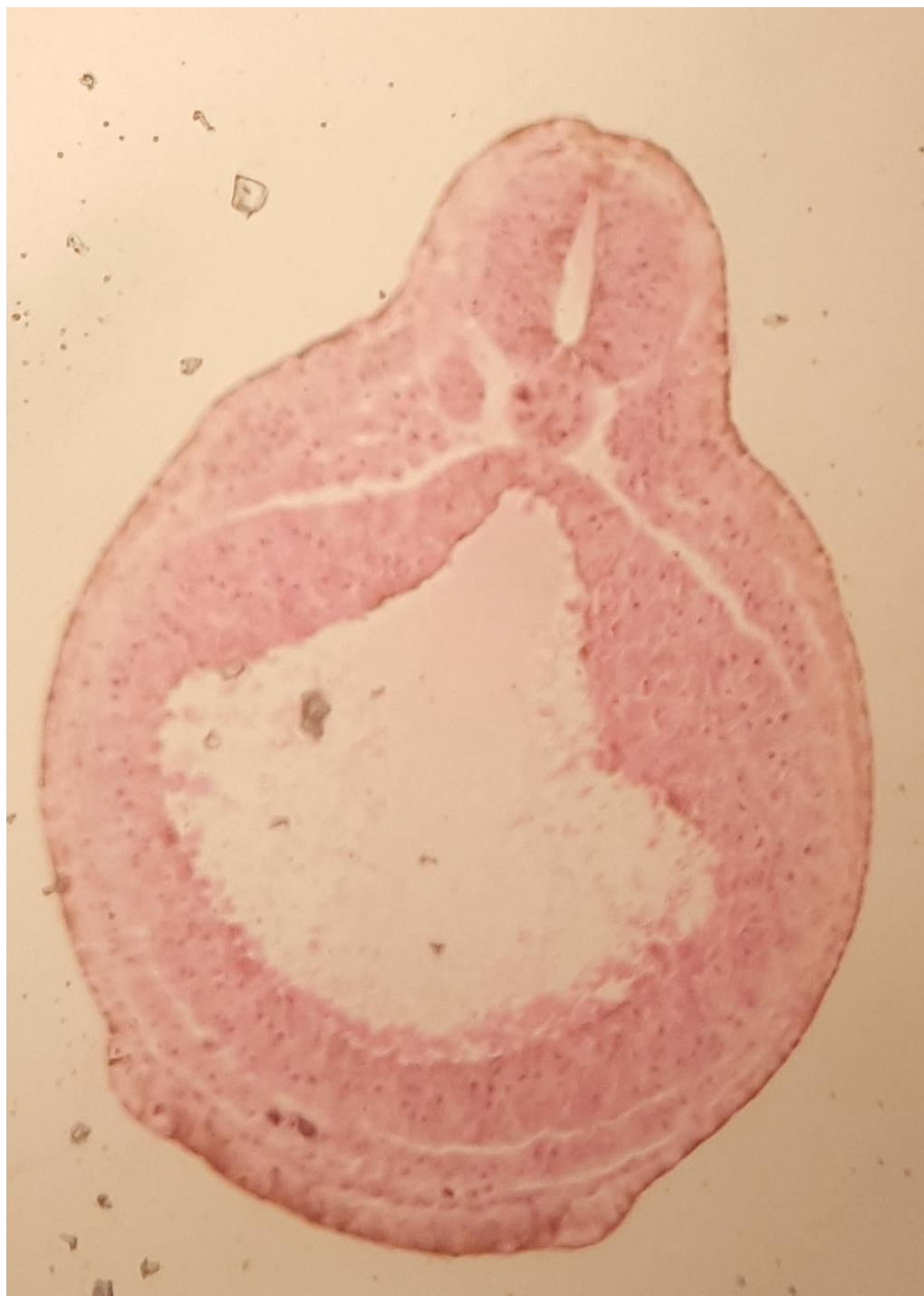
b) Stade de la gouttière neurale

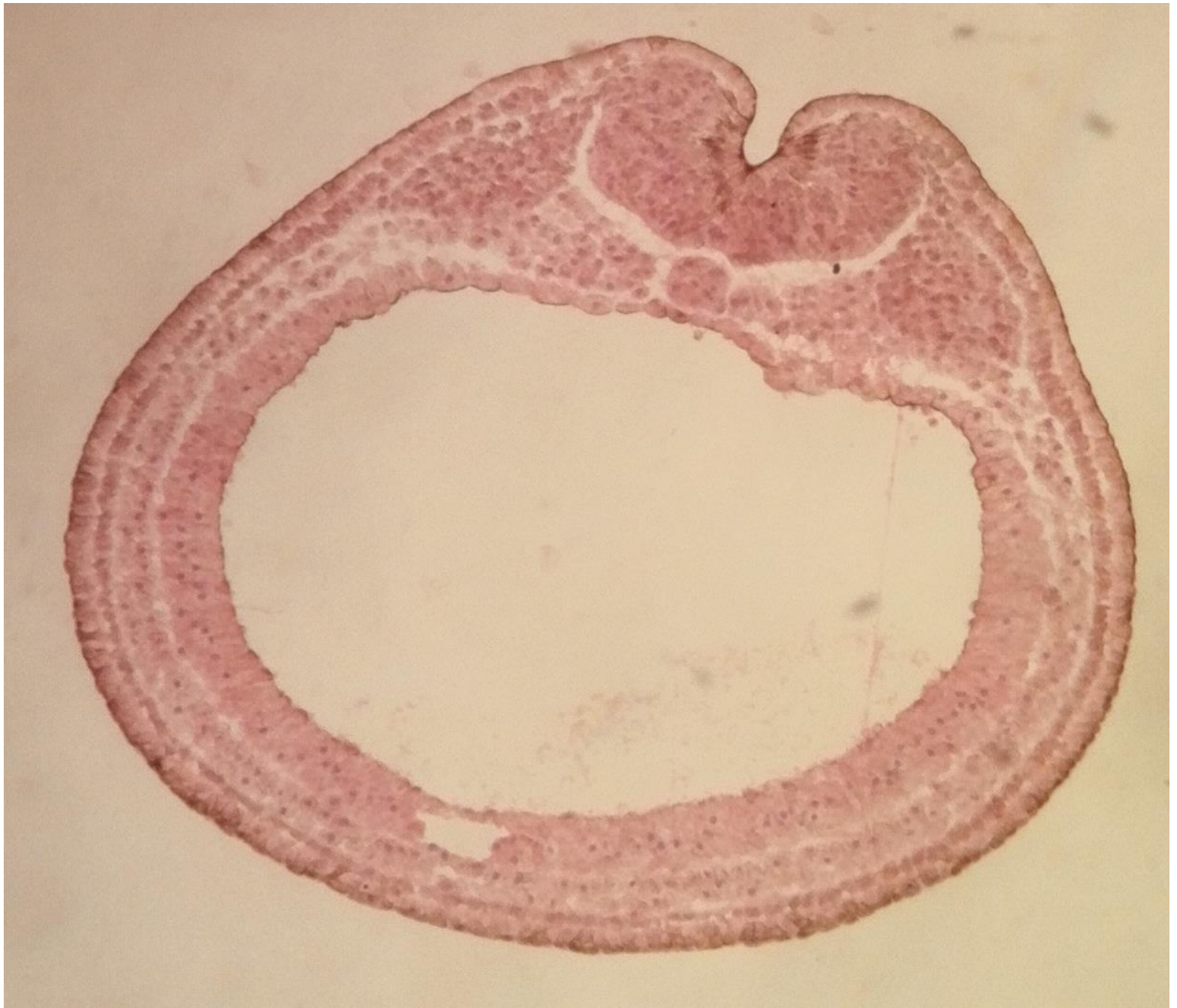


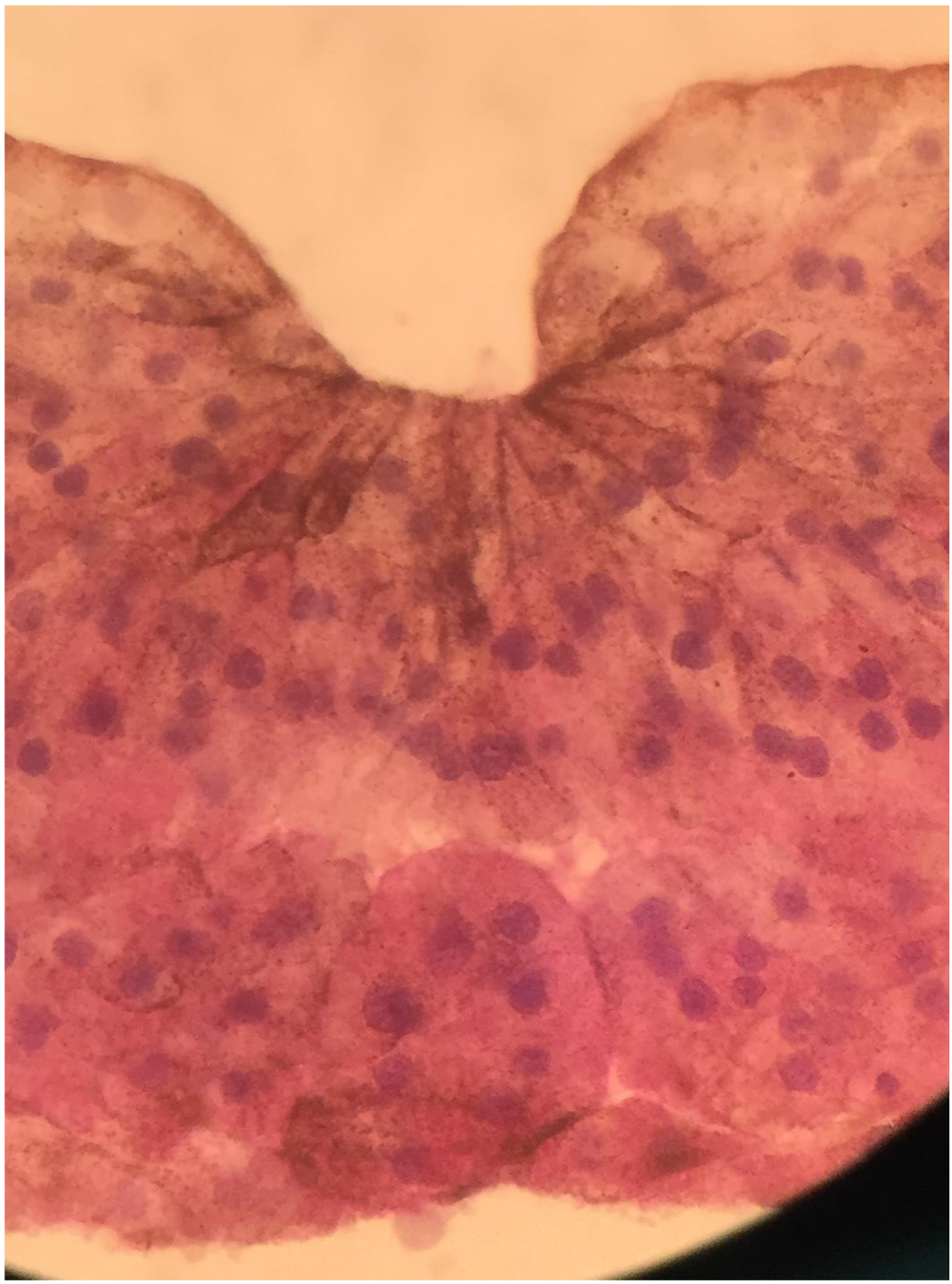
c) Stade du tube neural



2



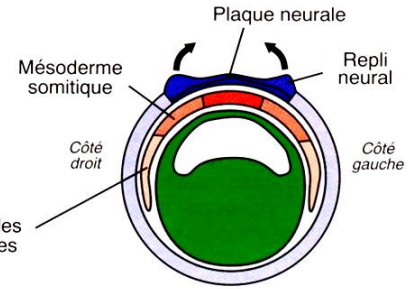
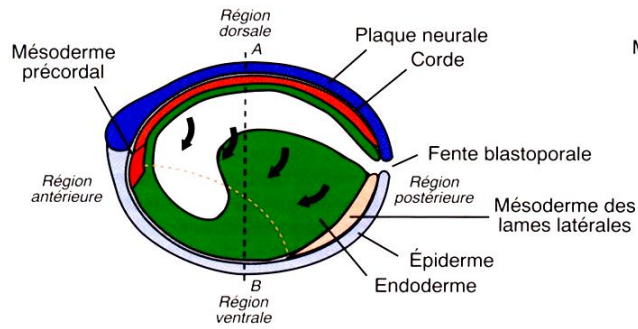




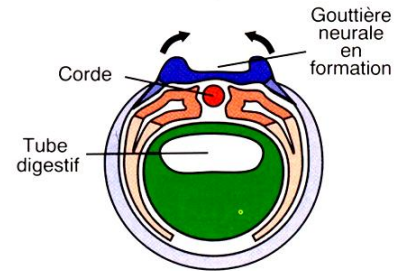
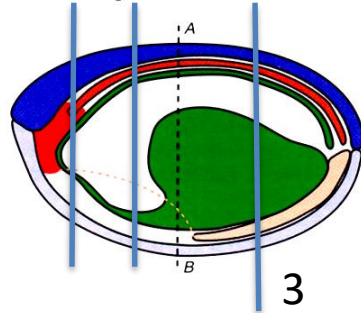
Coupes sagittales

Coupes transversales
(selon les lignes pointillées AB)

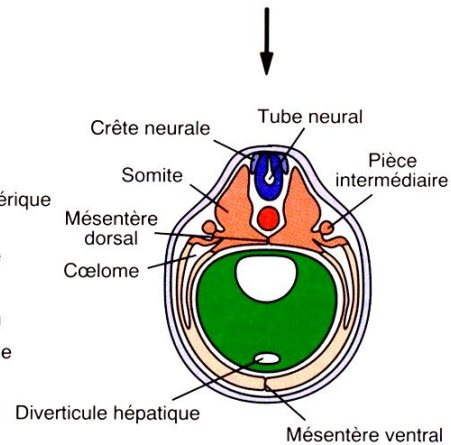
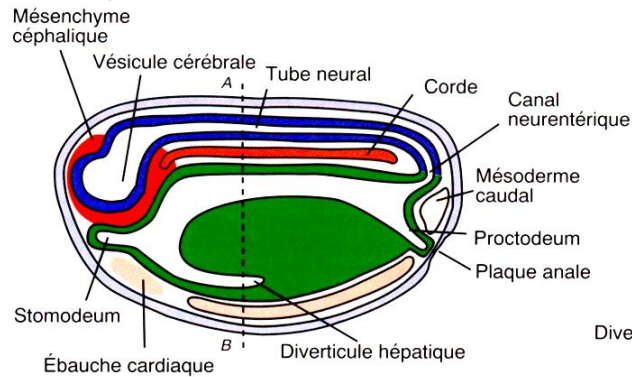
a) Stade de la plaque neurale



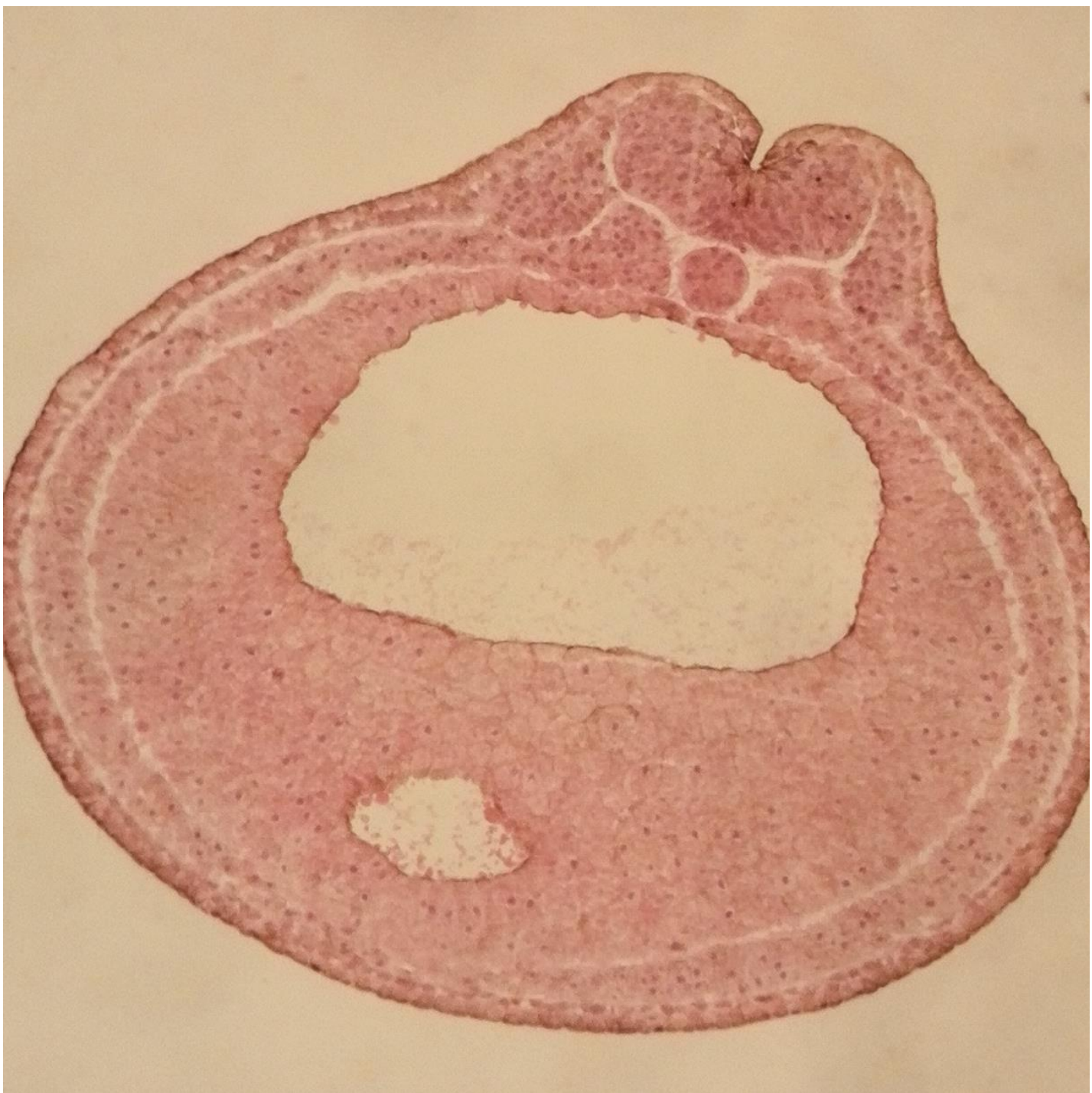
b) Stade de la gouttière neurale



c) Stade du tube neural



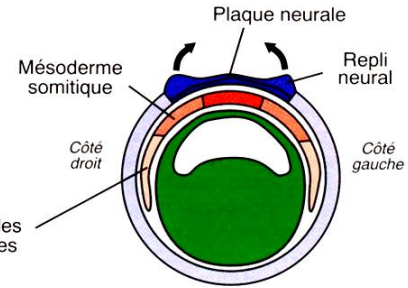
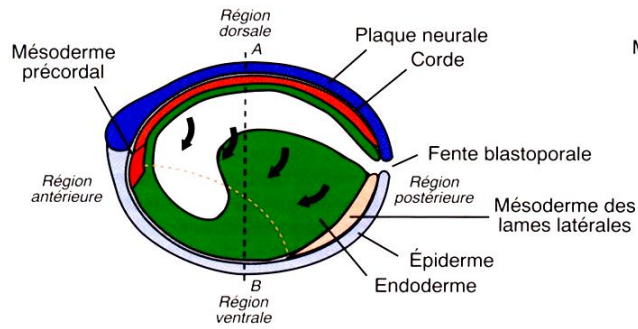
3



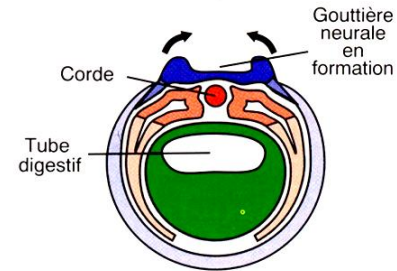
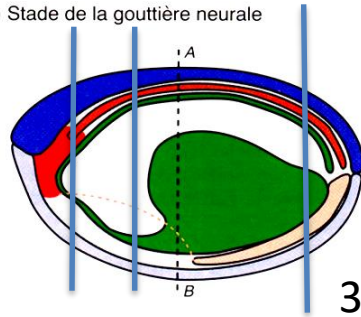
Coupes sagittales

Coupes transversales
(selon les lignes pointillées AB)

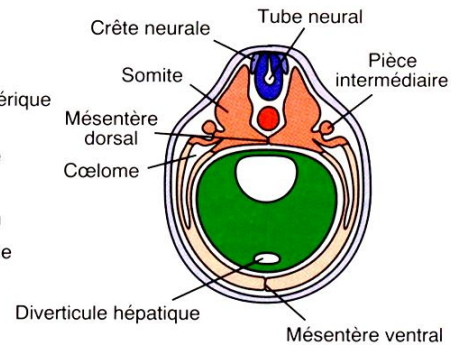
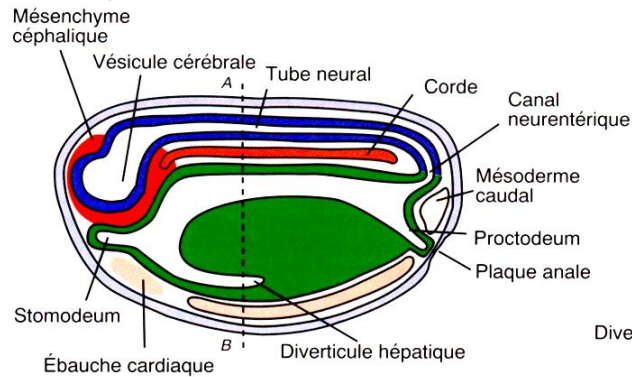
a) Stade de la plaque neurale

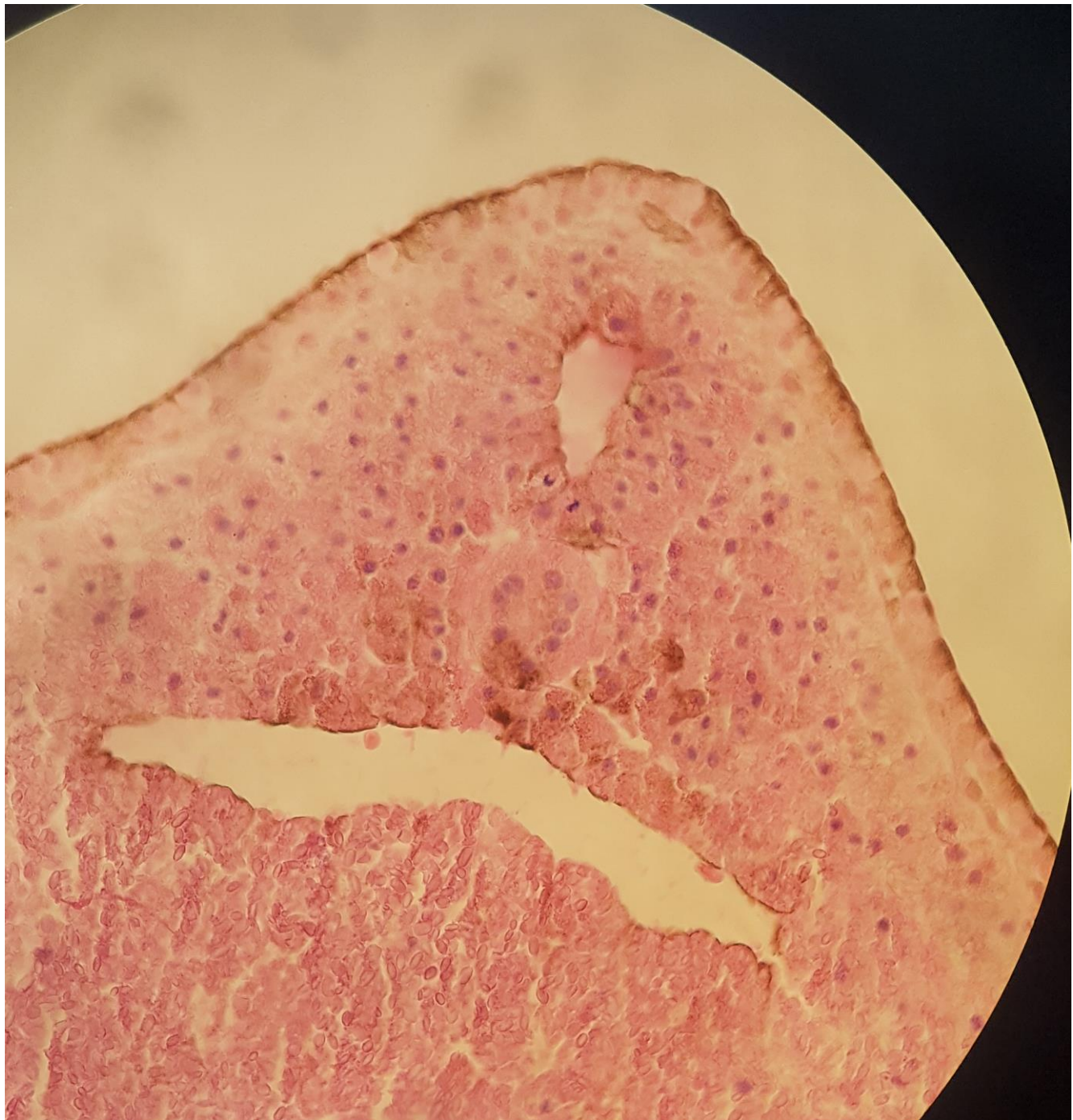


b) Stade de la gouttière neurale



c) Stade du tube neural









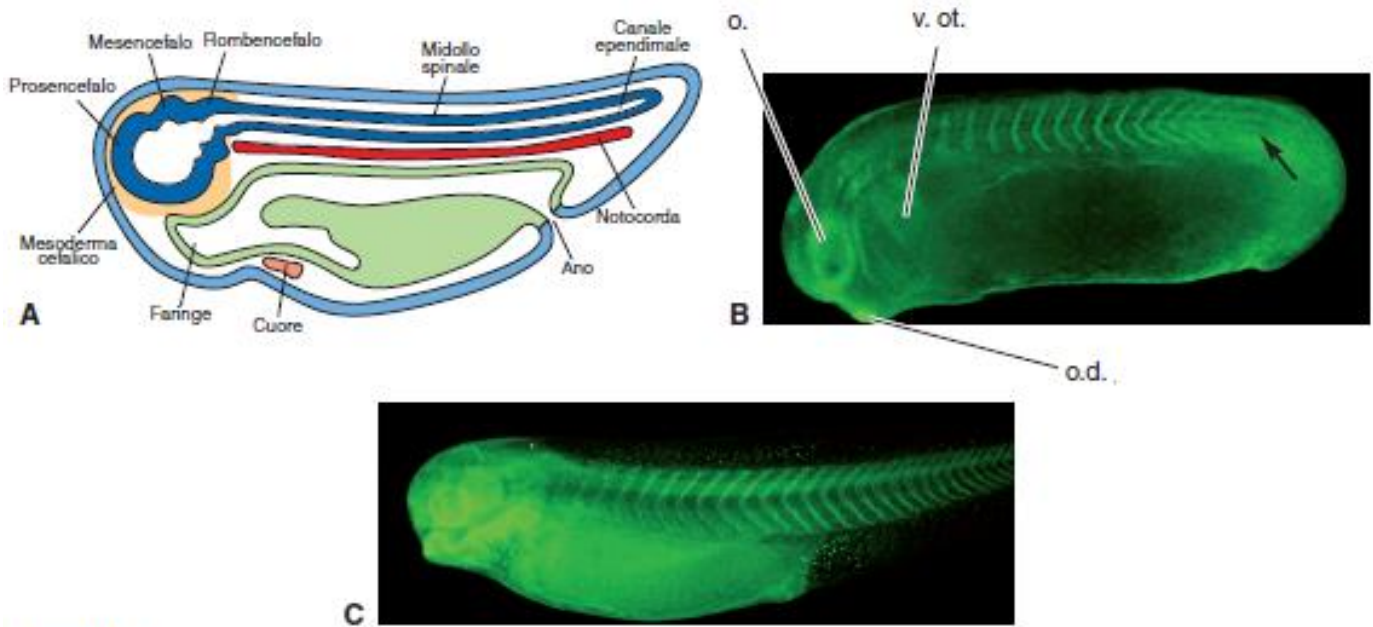
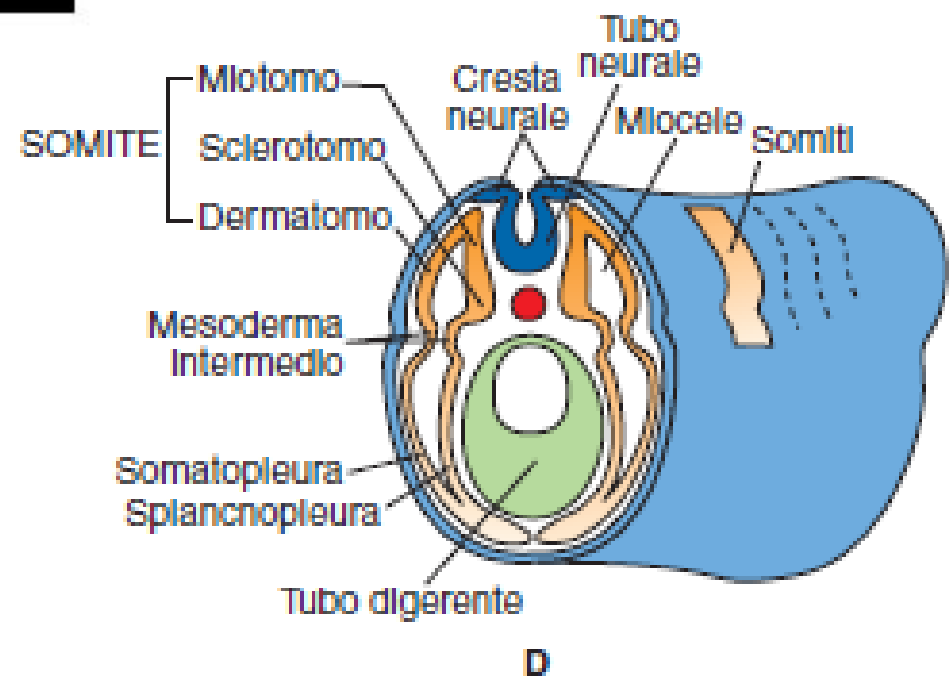
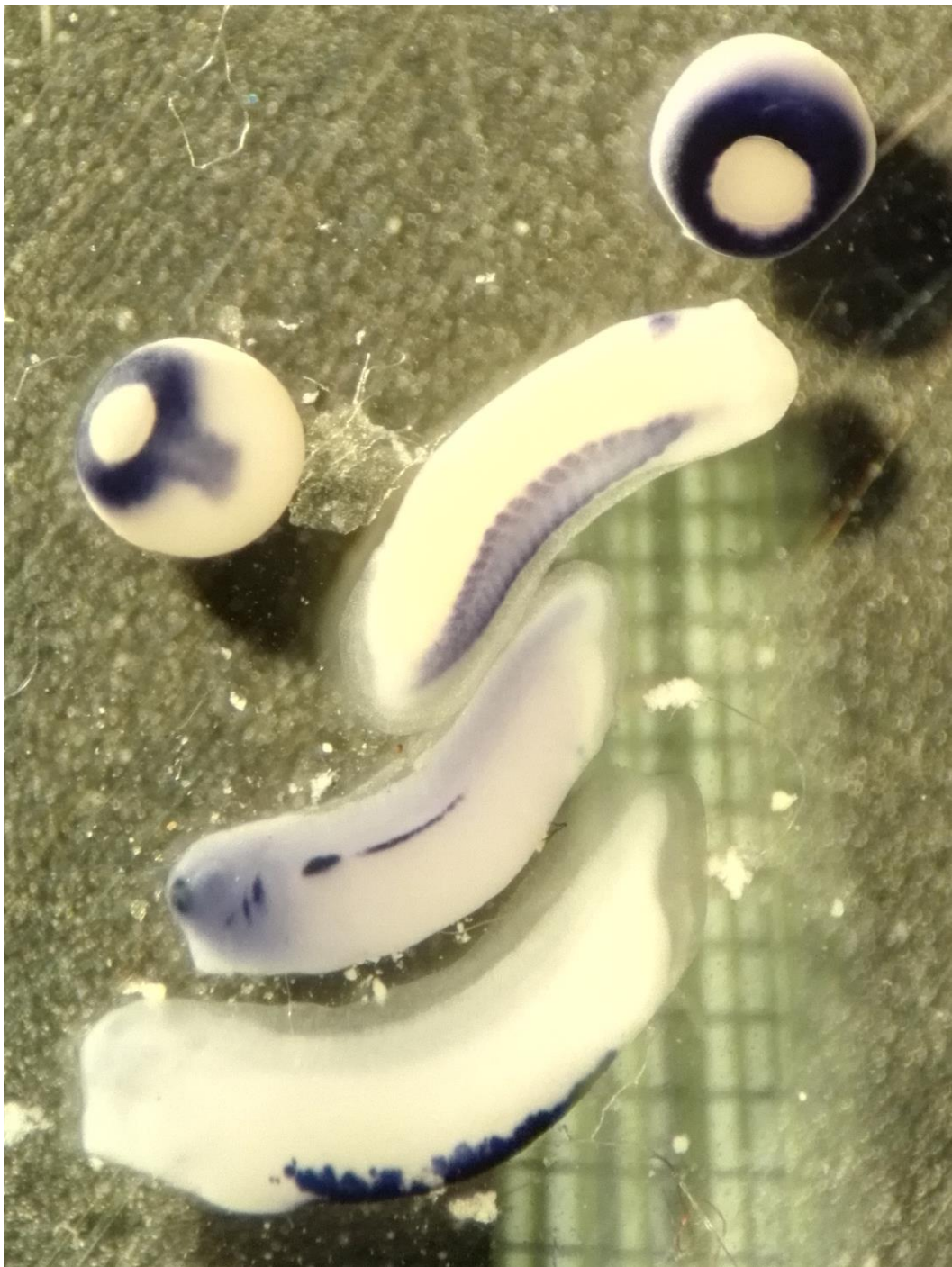


Figura 13



D

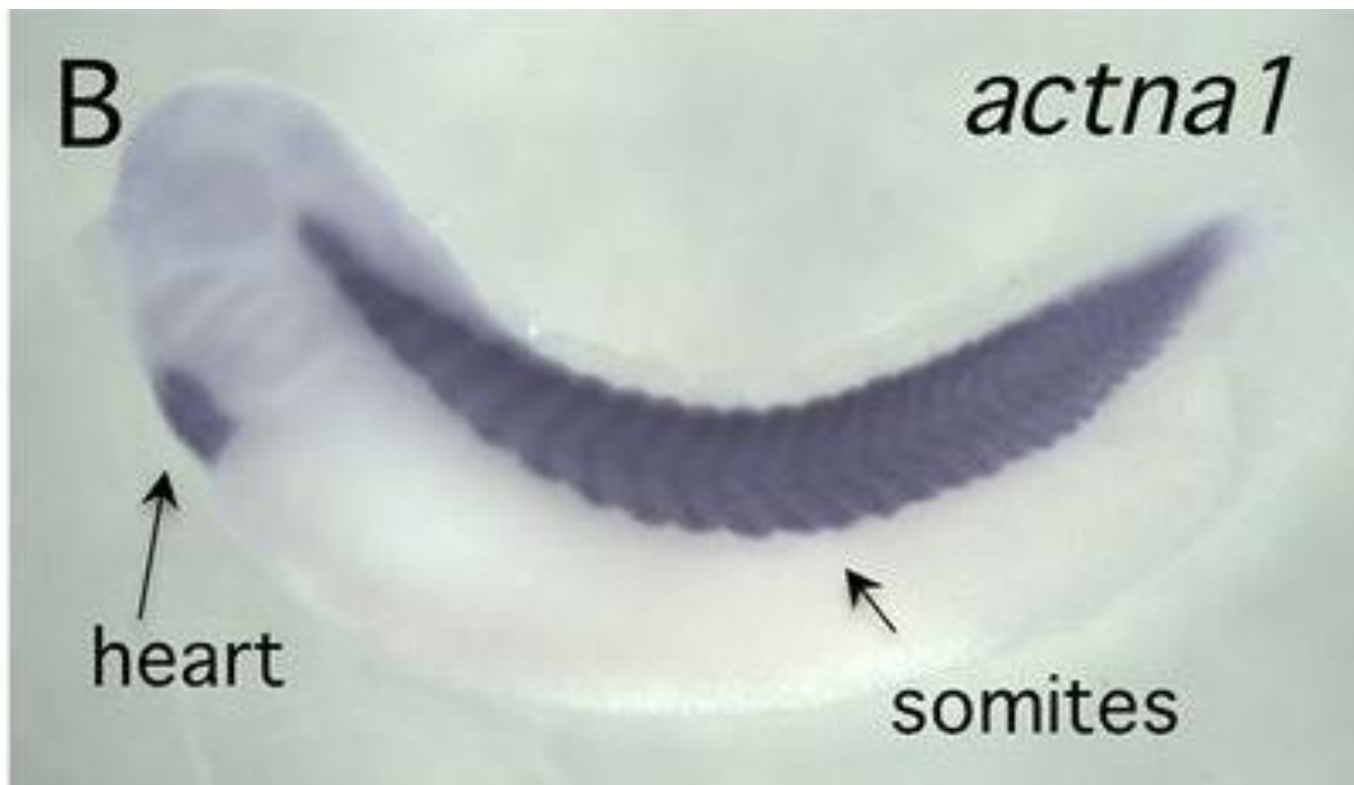


A

st 32

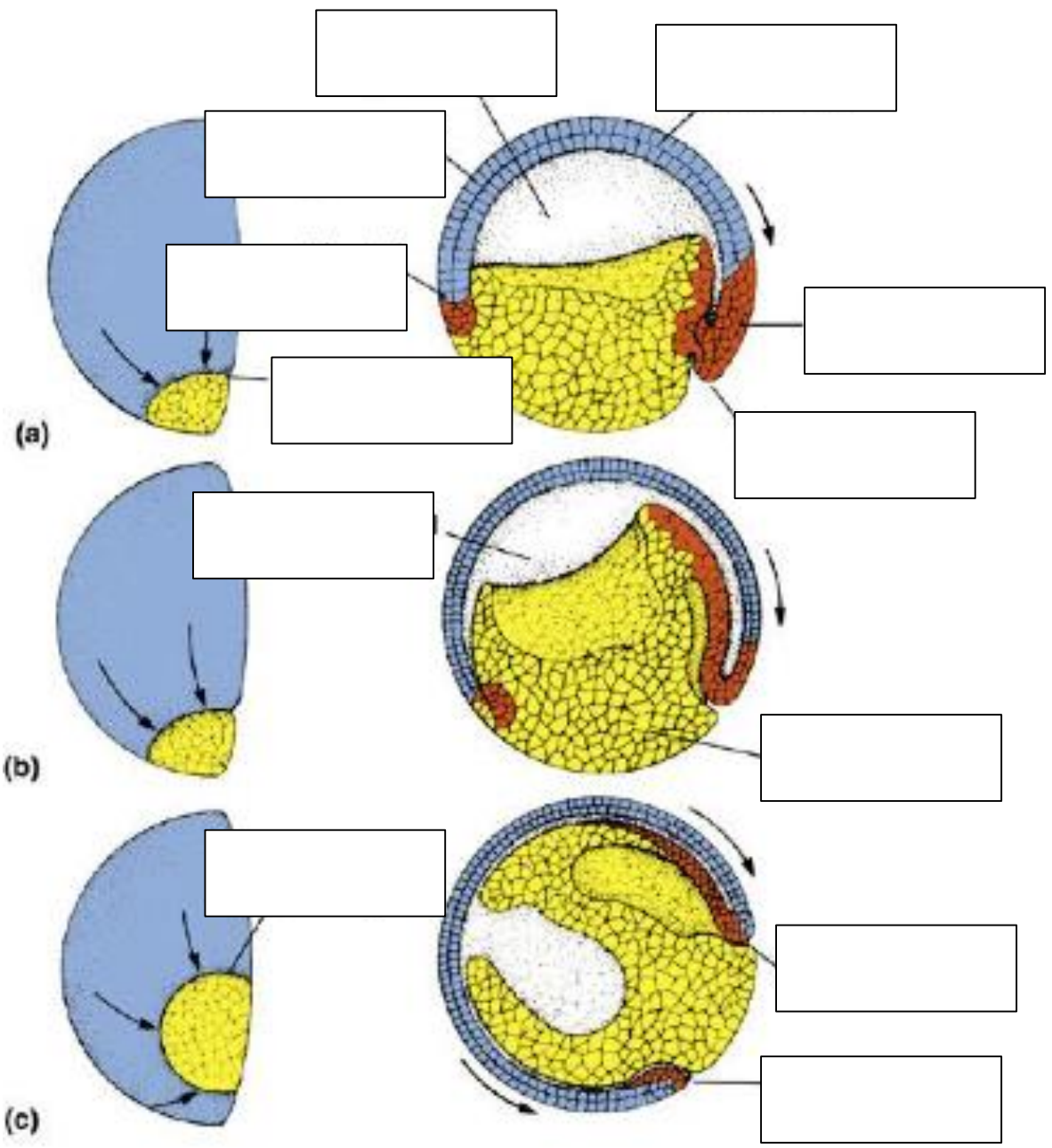
α T4globin

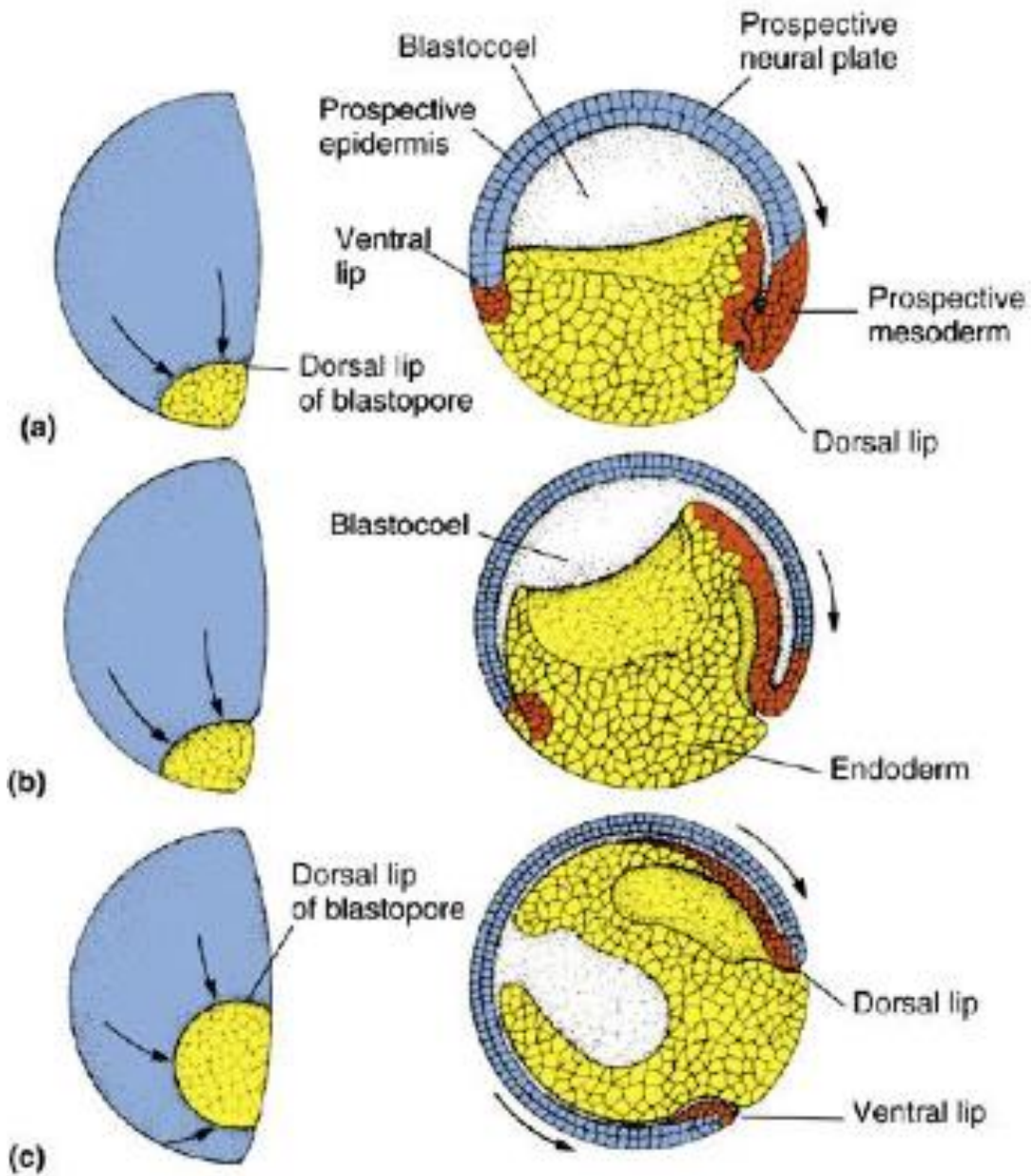






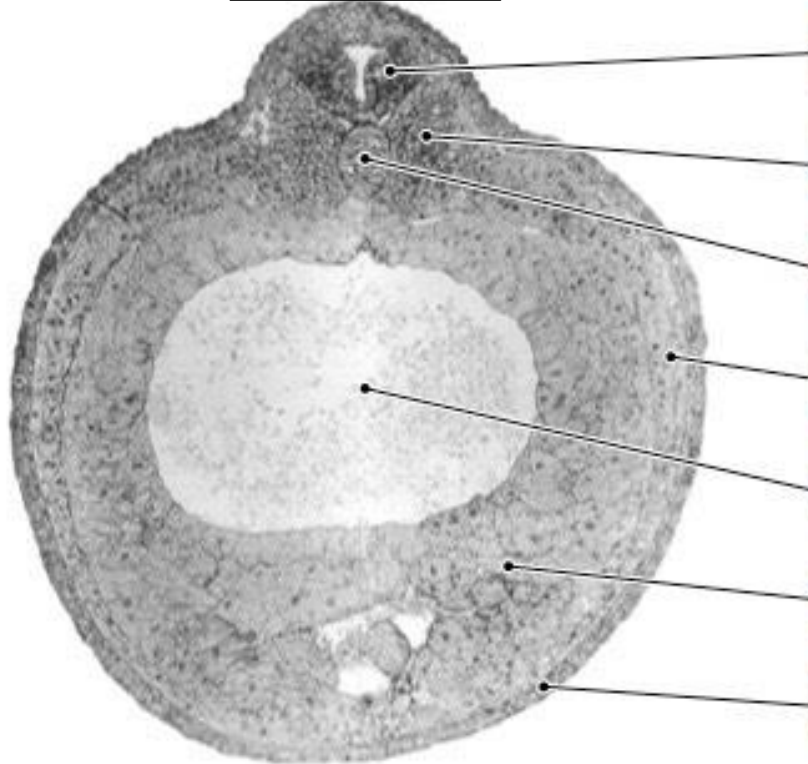
- [https://youtu.be/ Nl68Nc Dlc](https://youtu.be/Nl68NcDlc)
- <https://youtu.be/dXpAbezdOho>





[Empty box for overall title]

[Empty box for left diagram title]



[Empty box for left diagram title]

[Empty box for label 1]

[Empty box for label 2]

[Empty box for label 3]

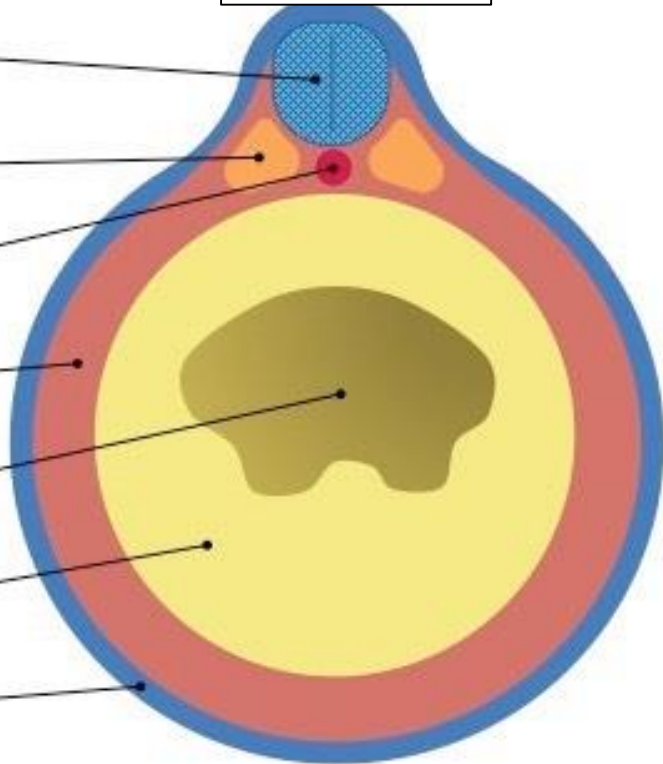
[Empty box for label 4]

[Empty box for label 5]

[Empty box for label 6]

[Empty box for label 7]

[Empty box for right diagram title]



[Empty box for right diagram title]

Transverse cross-section of a *Xenopus* embryo (left: micrograph ; right: schematic)

