

Laboratorio II : Anfibi

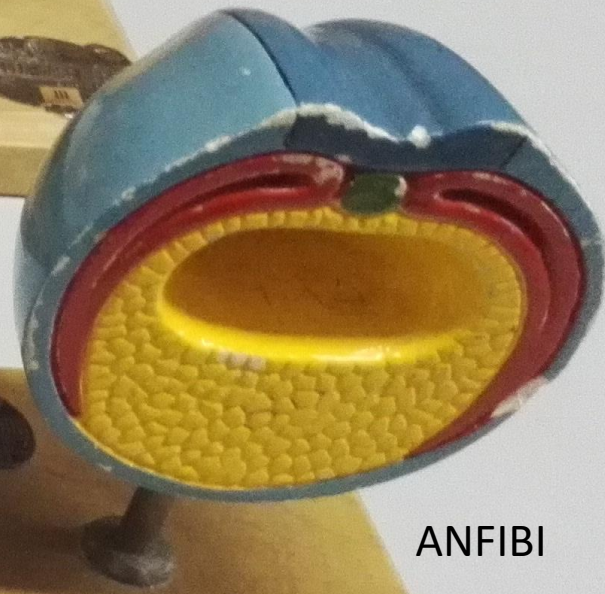
ANFIOSSO



ANFIBI



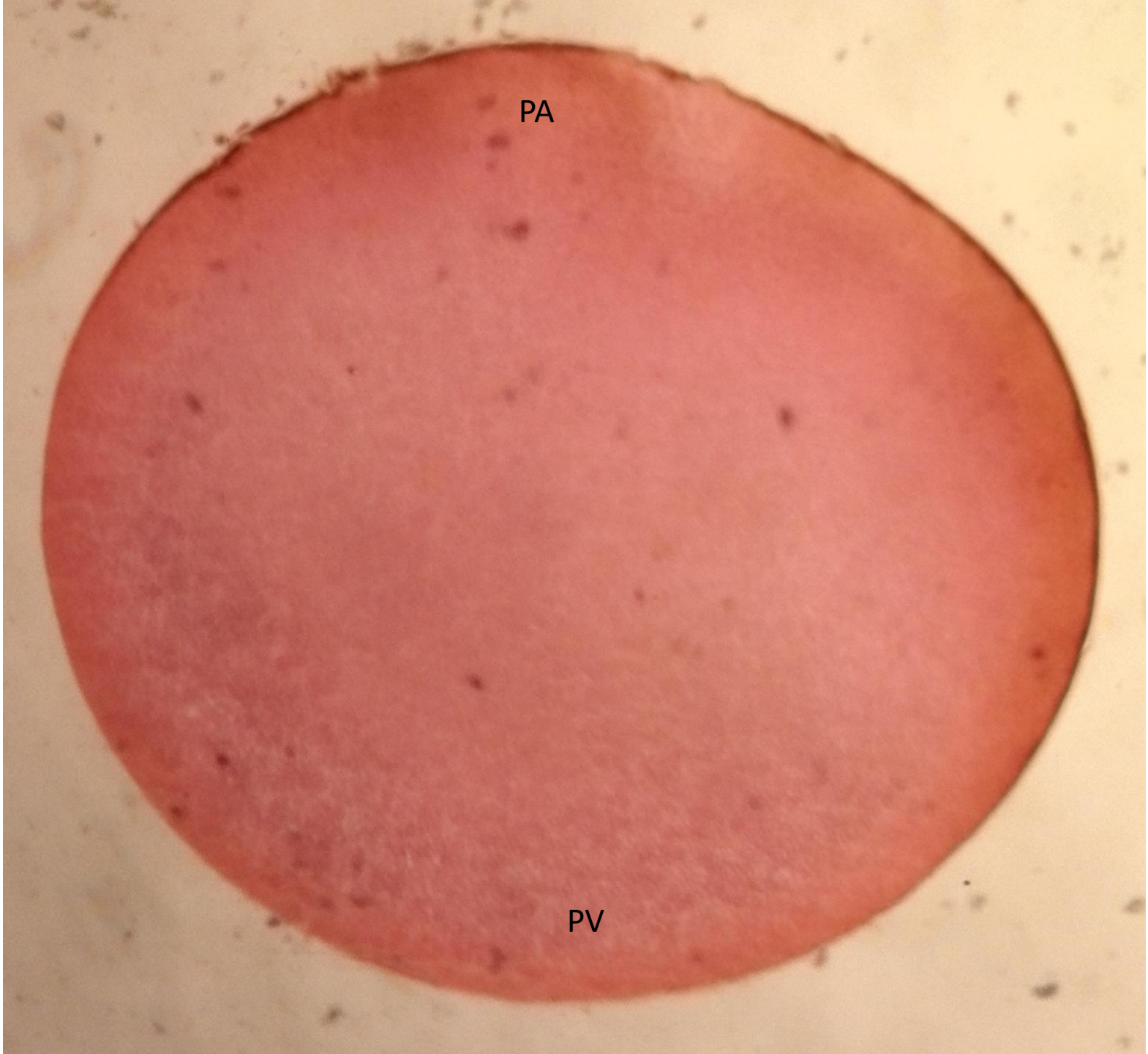
ANFIOSSO



ANFIBI

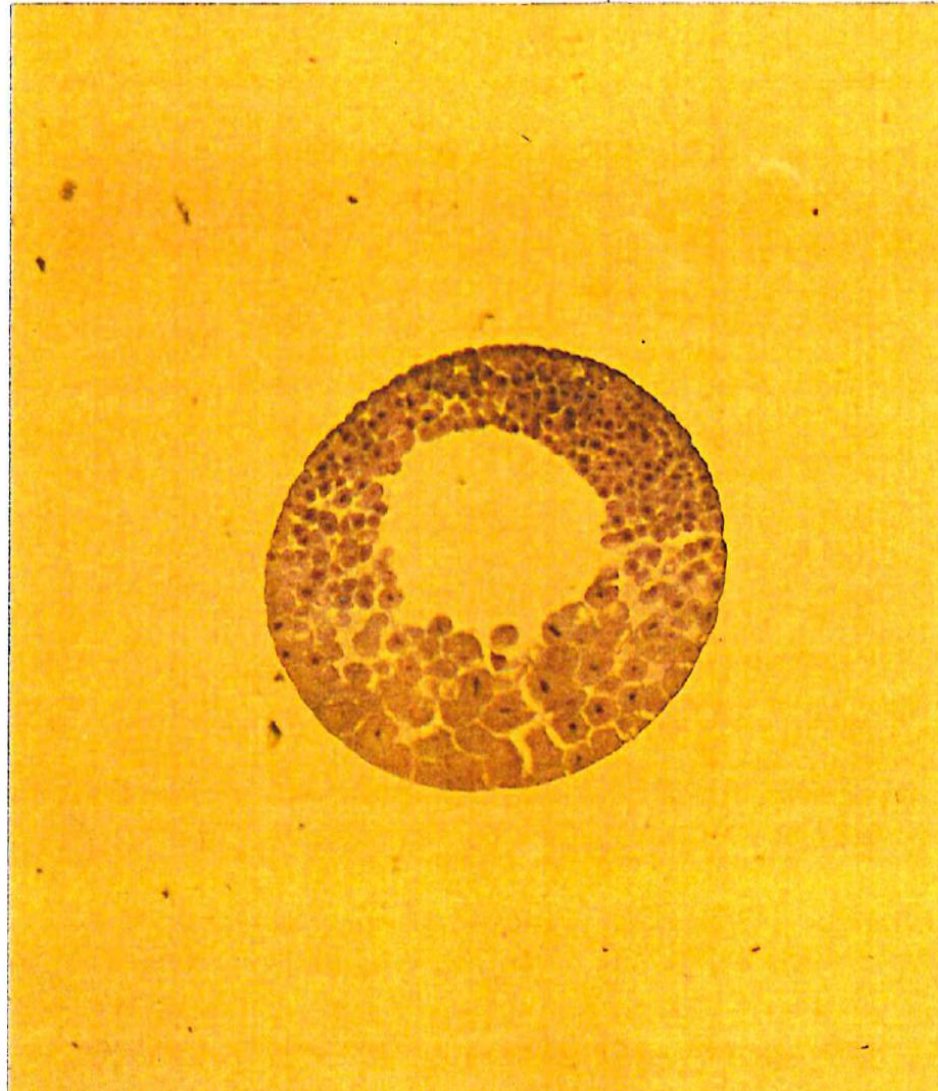
PA

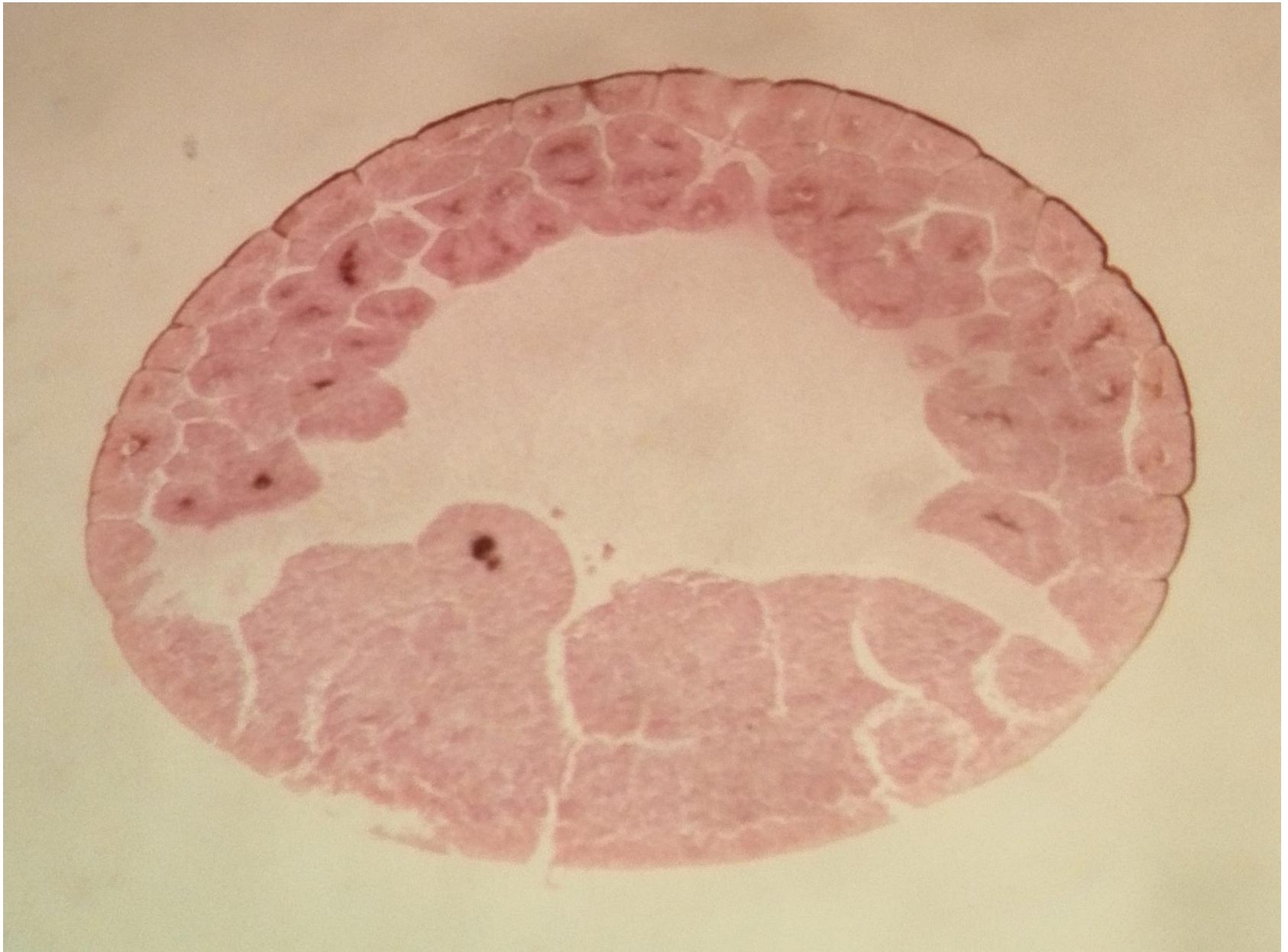
PV

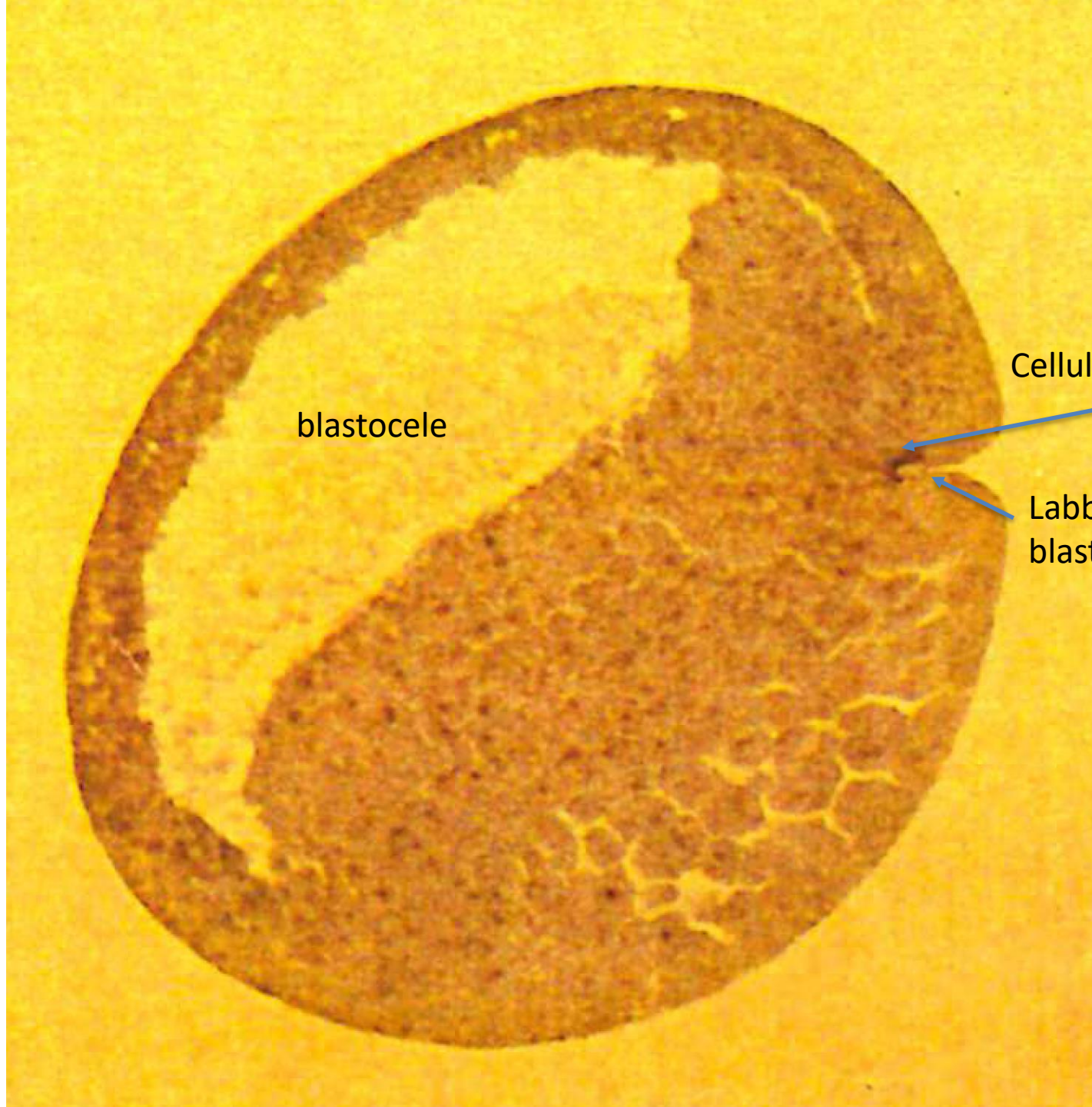




Blastula



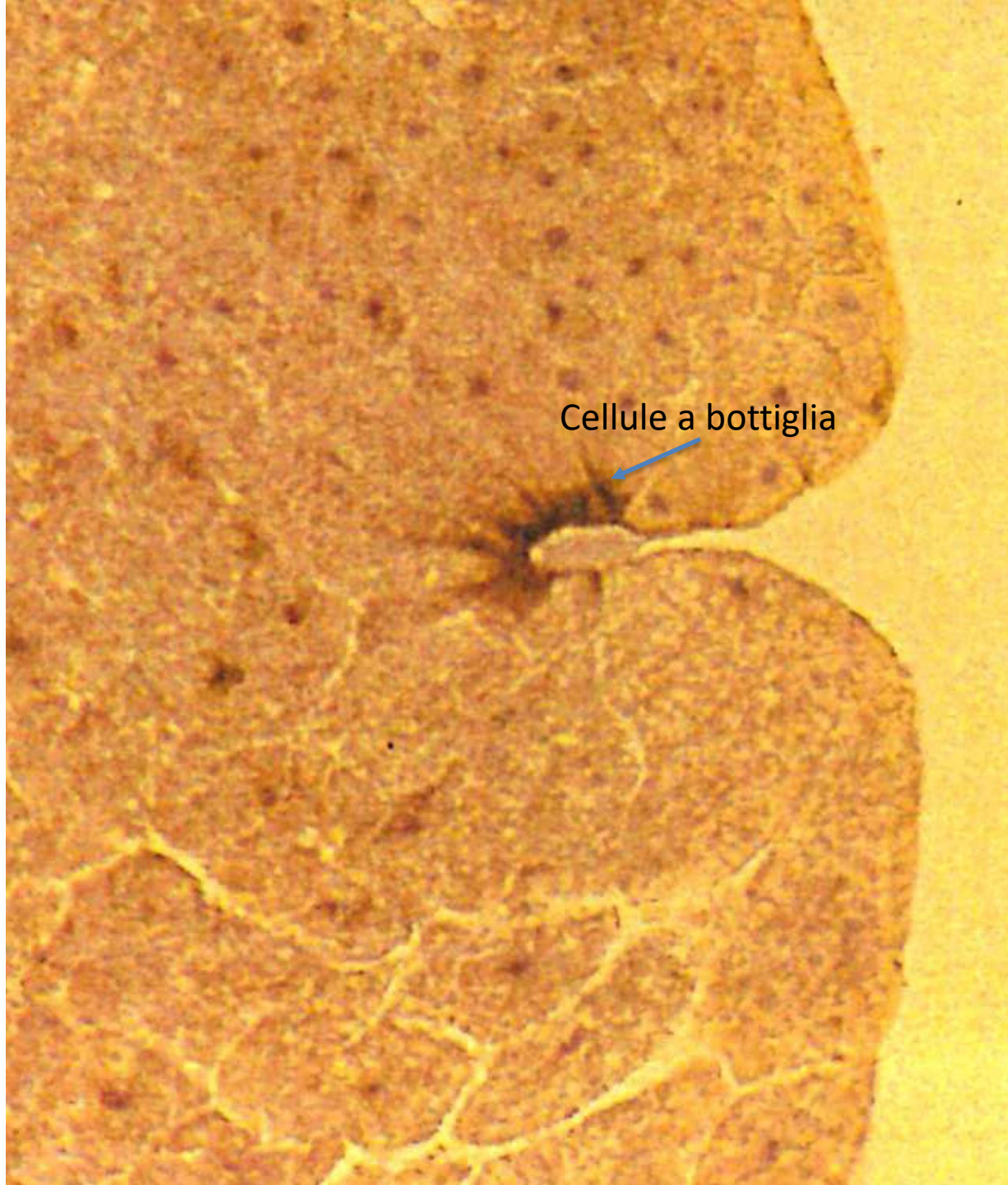




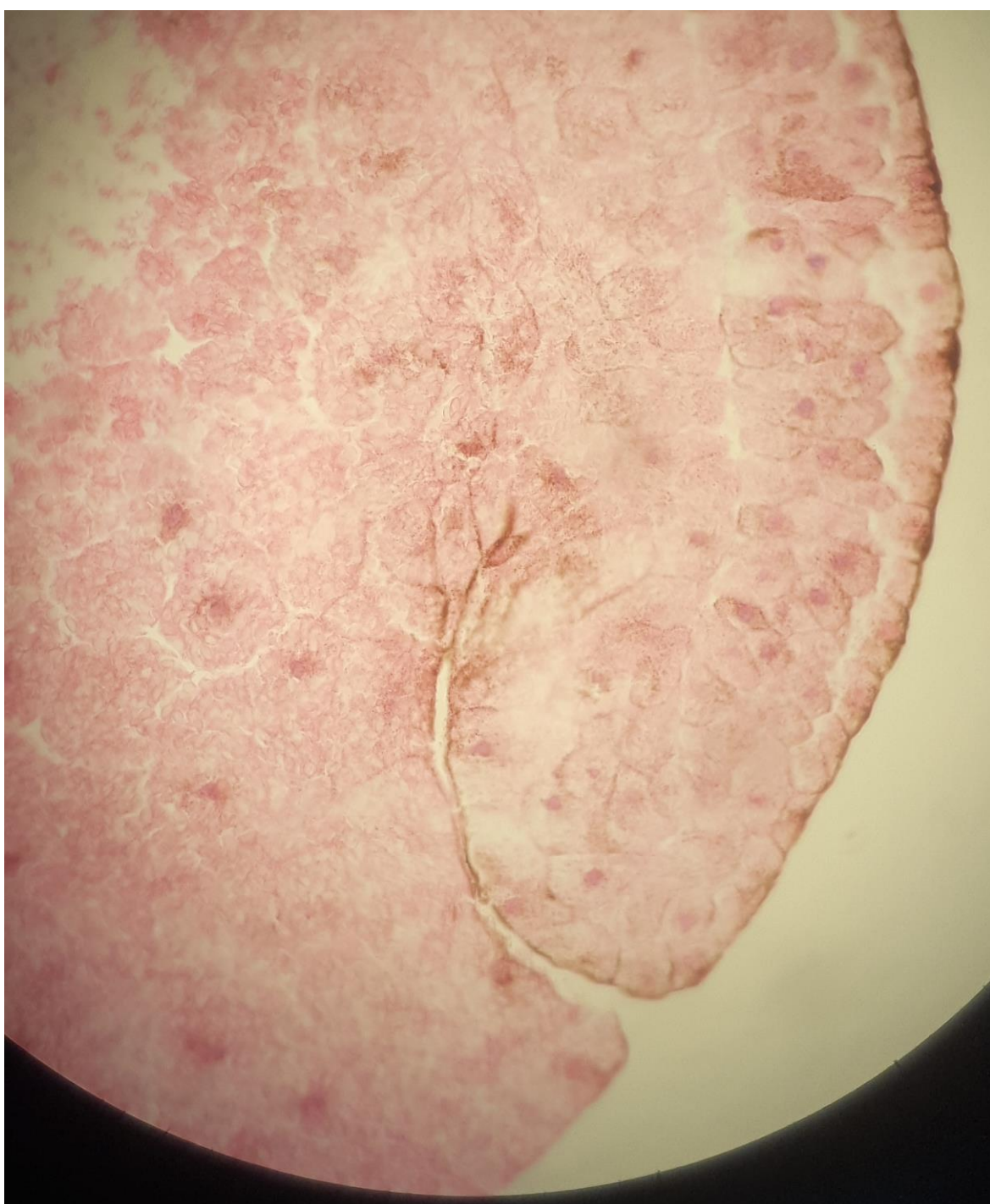
blastocoele

Cellule a bottiglia

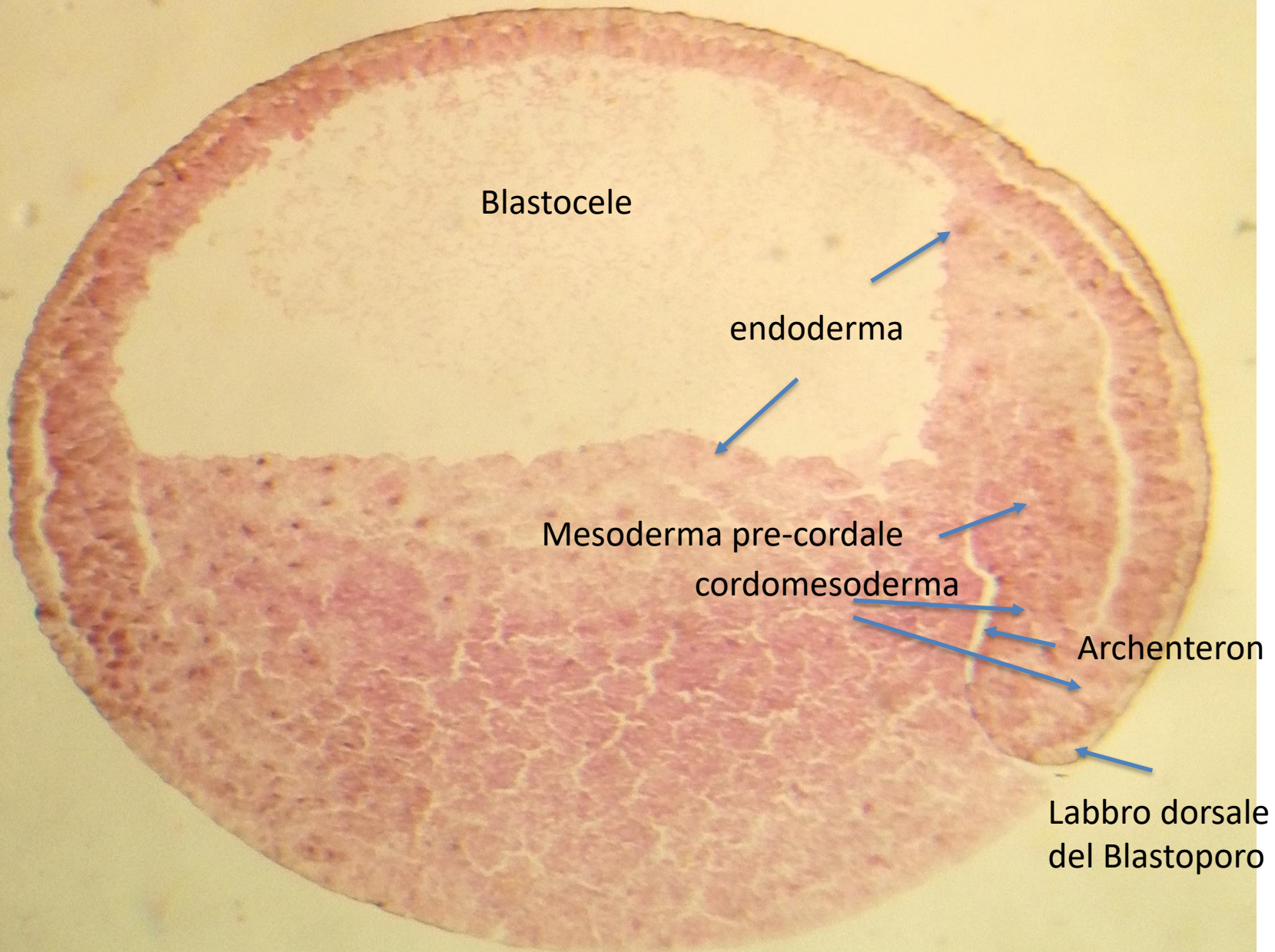
Labbro dorsale
blastoporo



Cellule a bottiglia



Gastrula



Blastocoel

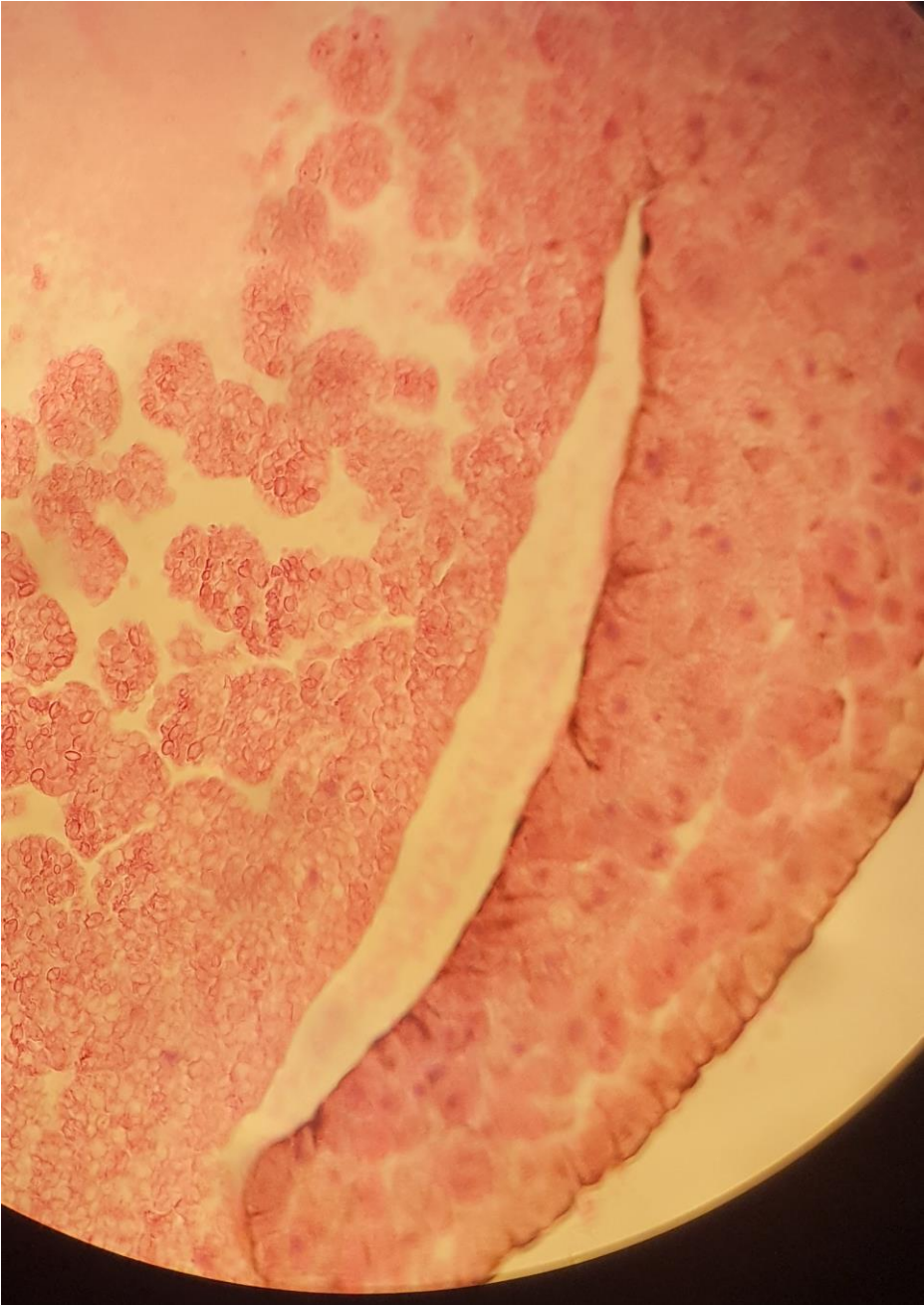
endoderm

Mesoderm pre-cordal

cordomesoderm

Archenteron

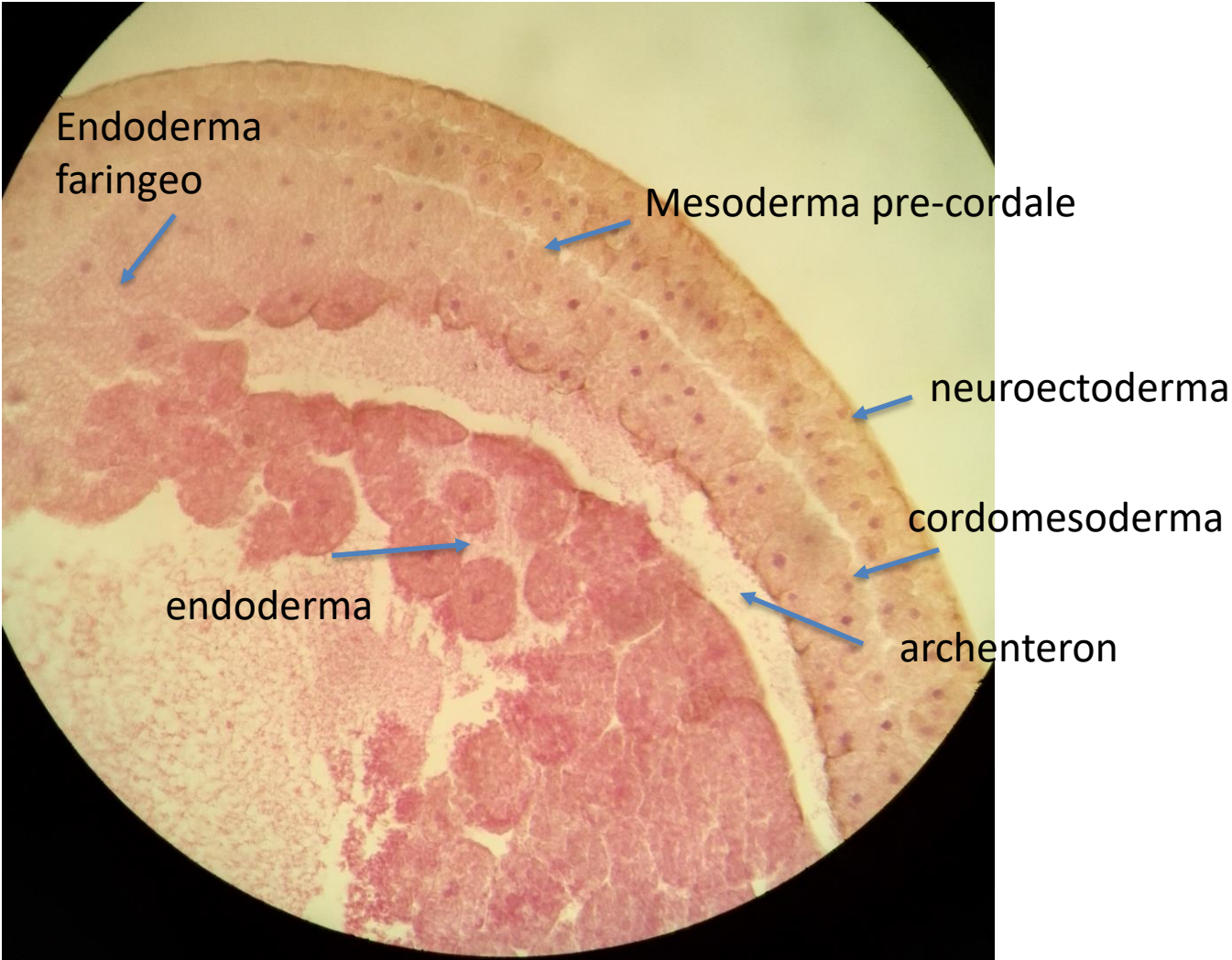
Labbro dorsale
del Blastoporo

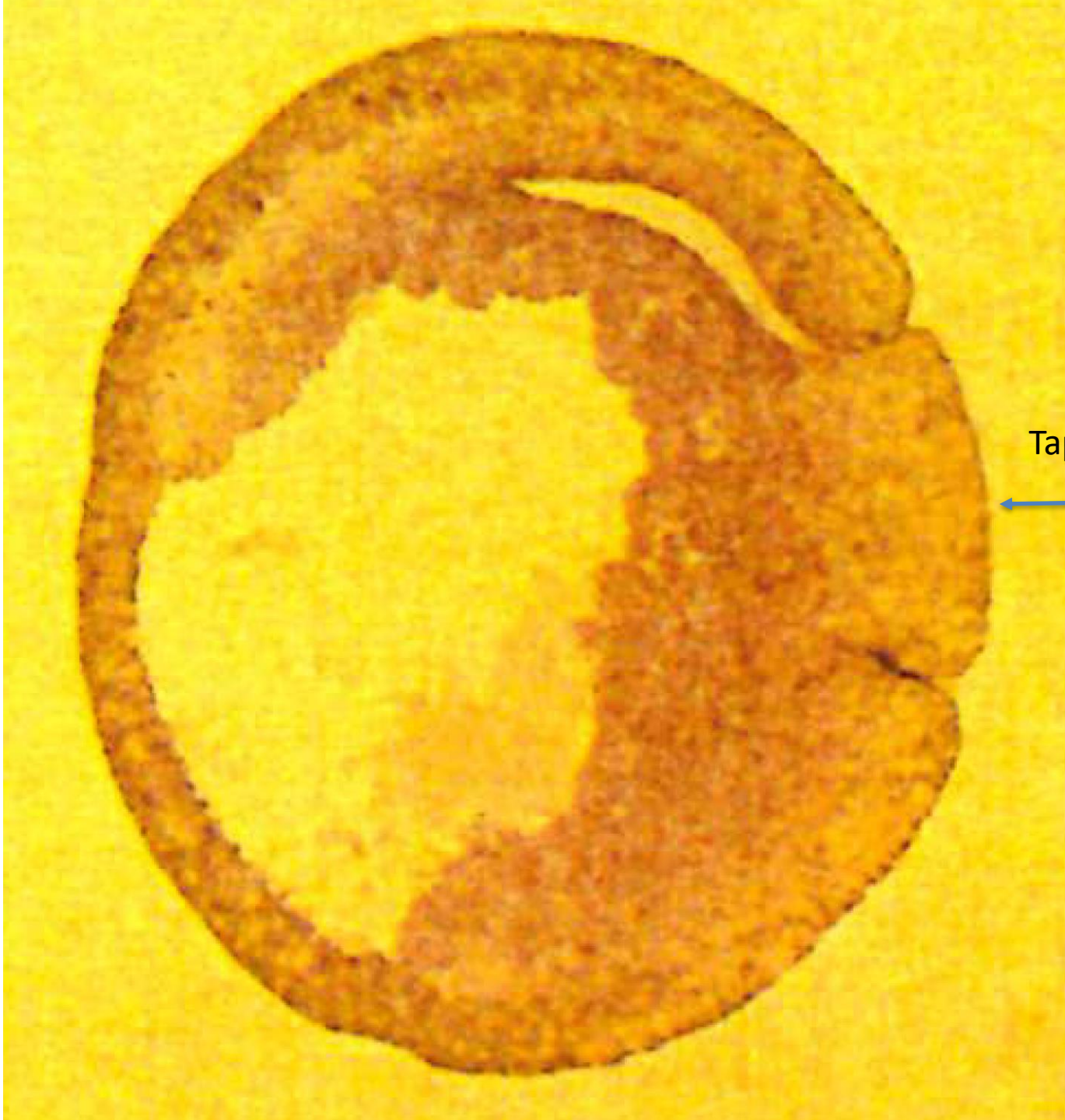




Labbro ventrale blastoporo







Tappo vitellino

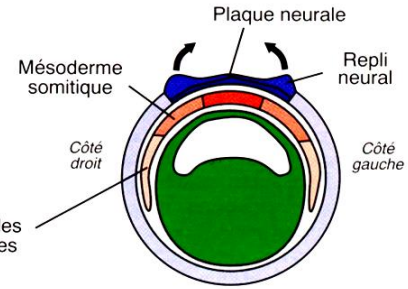
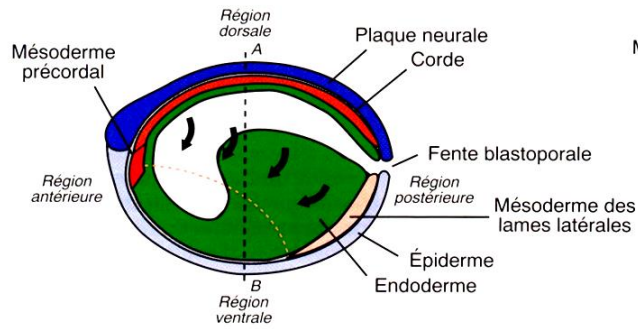




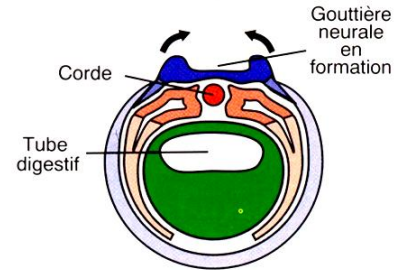
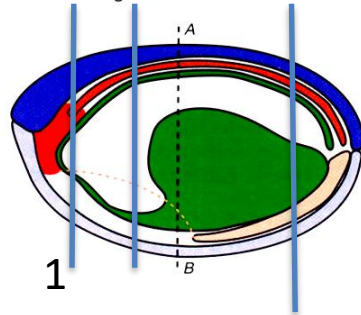
Coupes sagittales

Coupes transversales
(selon les lignes pointillées AB)

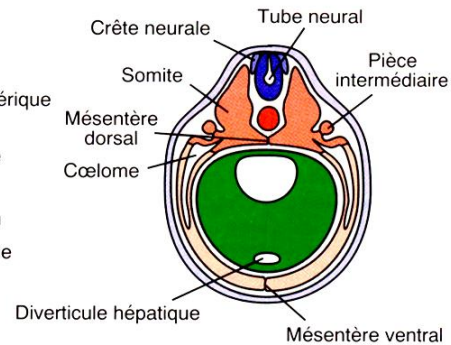
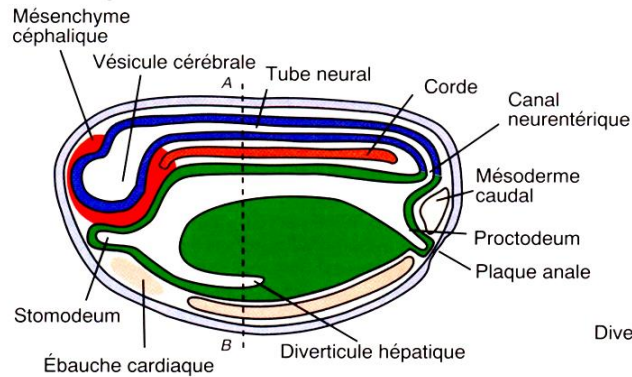
a) Stade de la plaque neurale



b) Stade de la gouttière neurale



c) Stade du tube neural



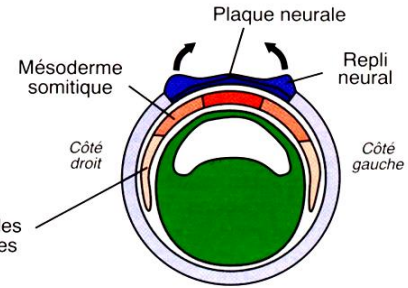
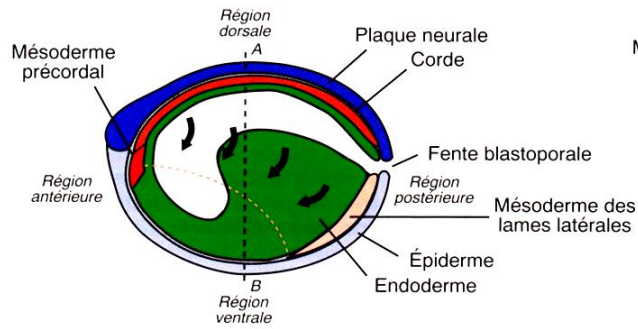




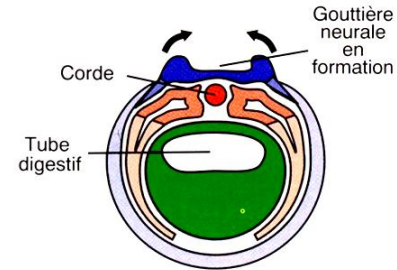
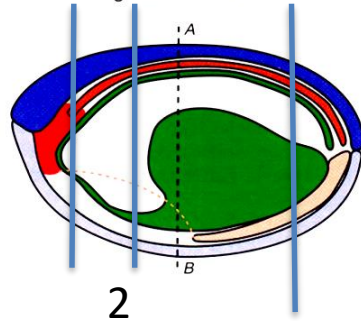
Coupes sagittales

Coupes transversales
(selon les lignes pointillées AB)

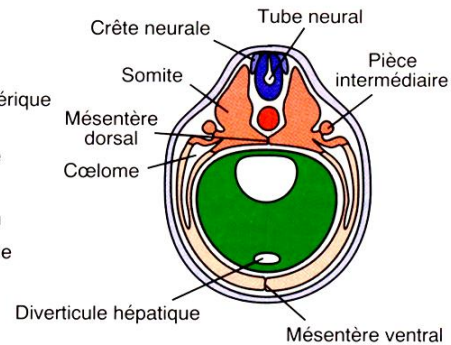
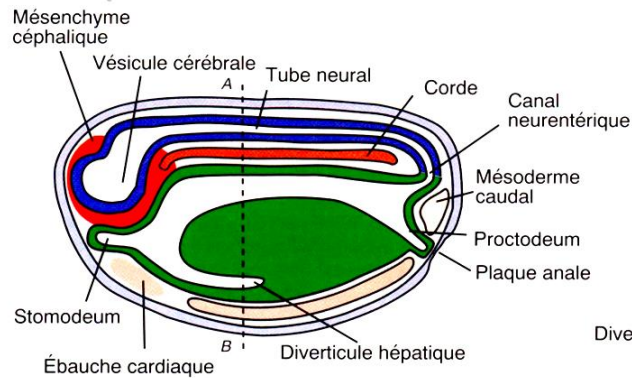
a) Stade de la plaque neurale

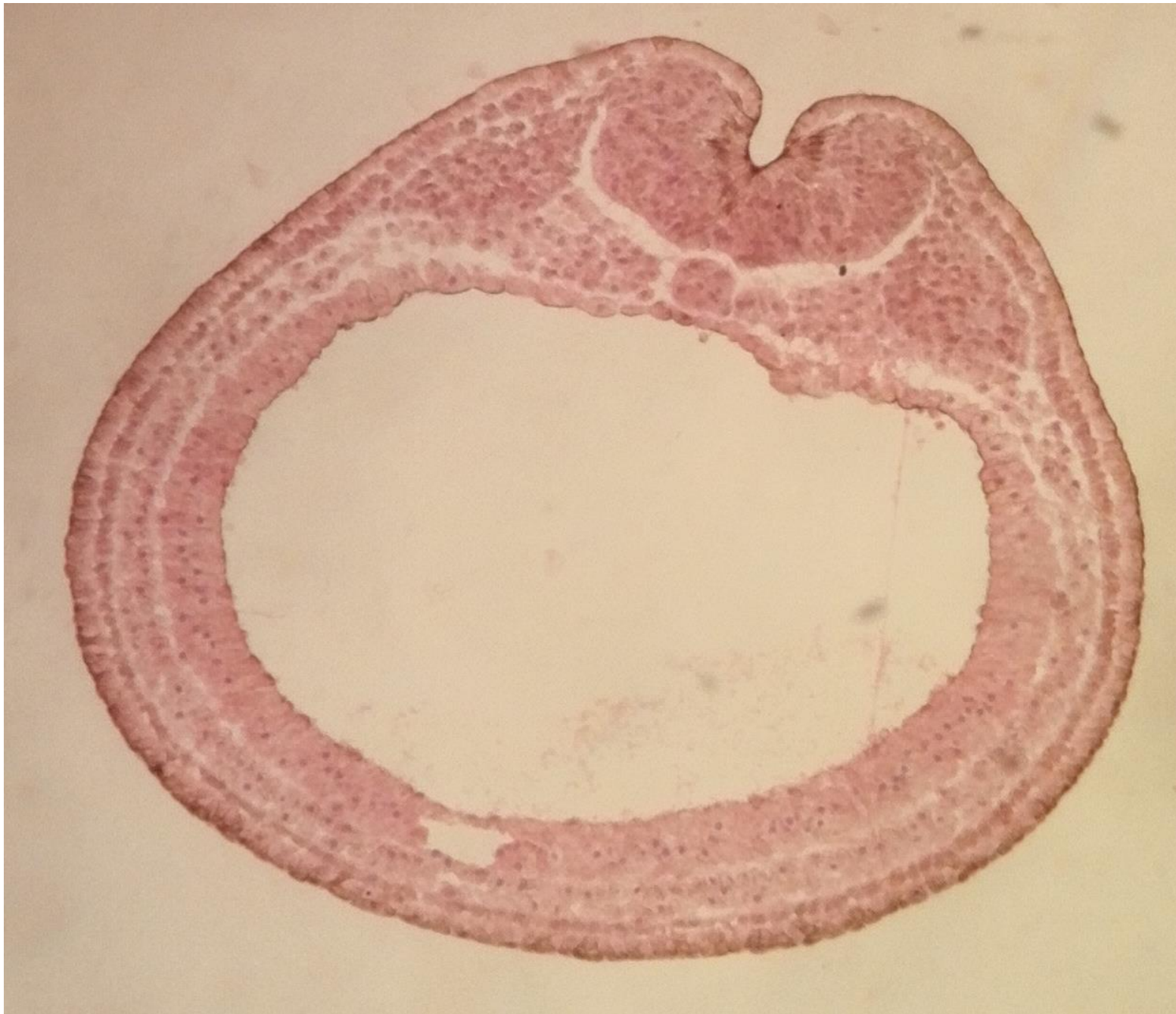


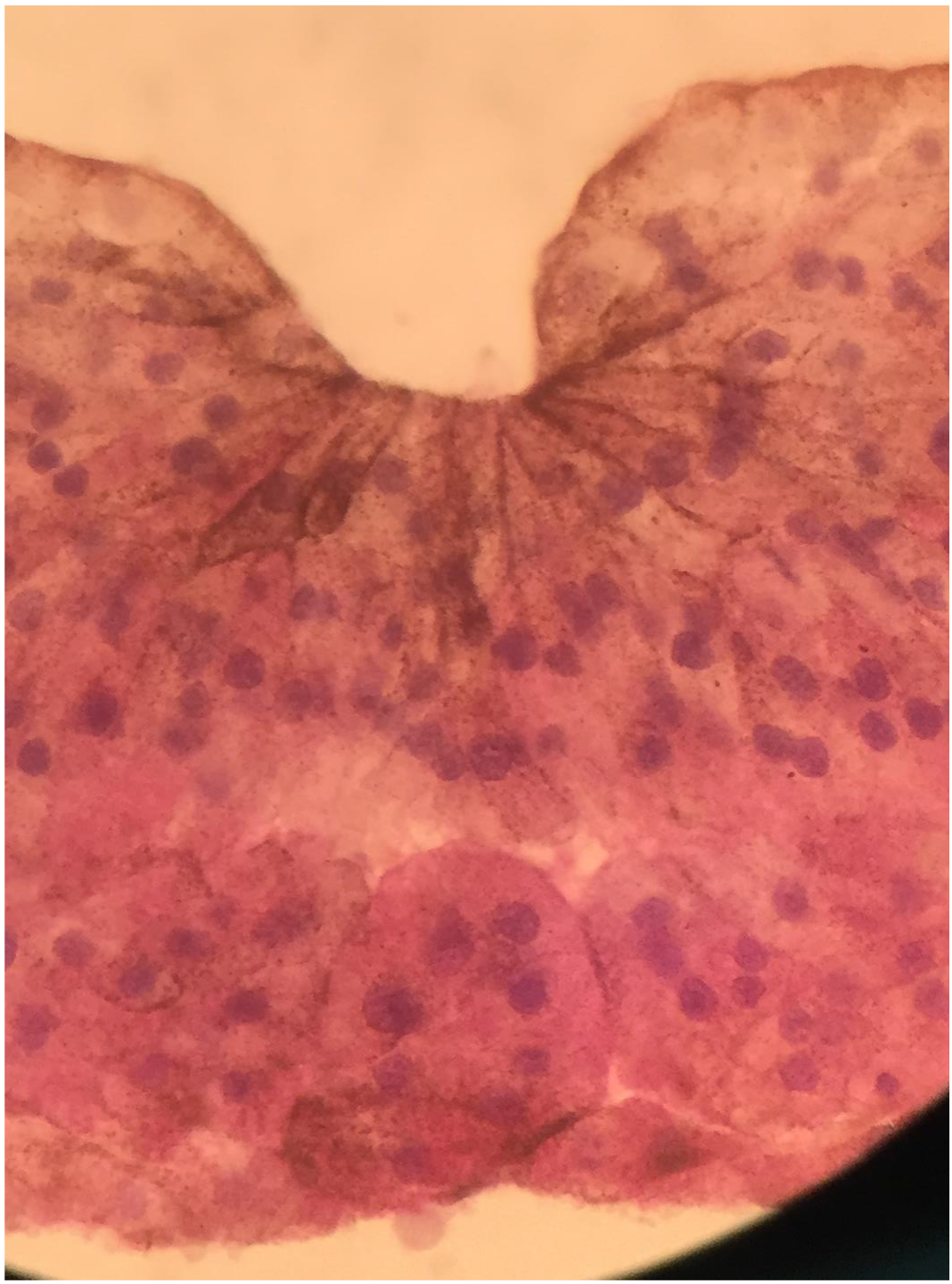
b) Stade de la gouttière neurale



c) Stade du tube neural



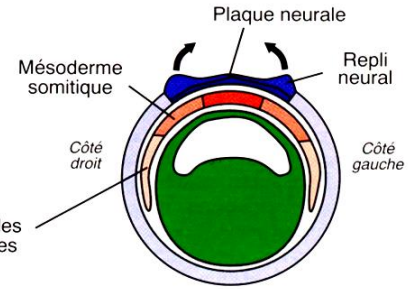
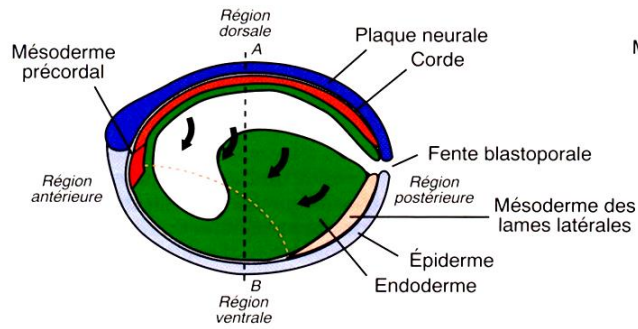




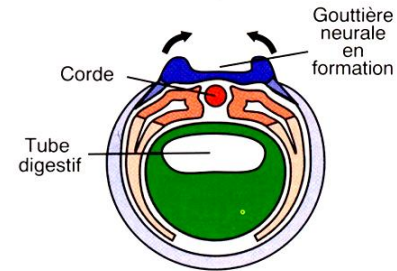
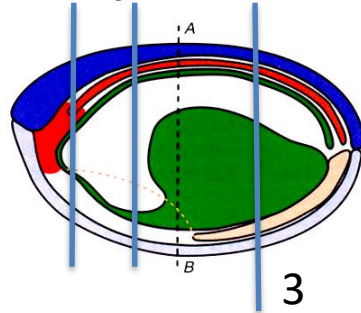
Coupes sagittales

Coupes transversales
(selon les lignes pointillées AB)

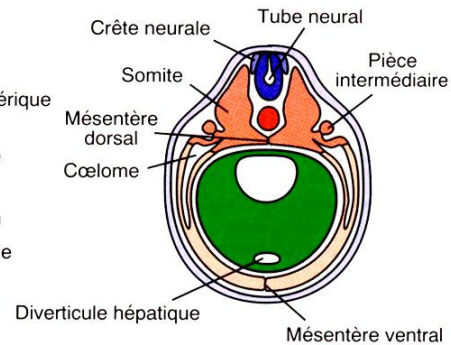
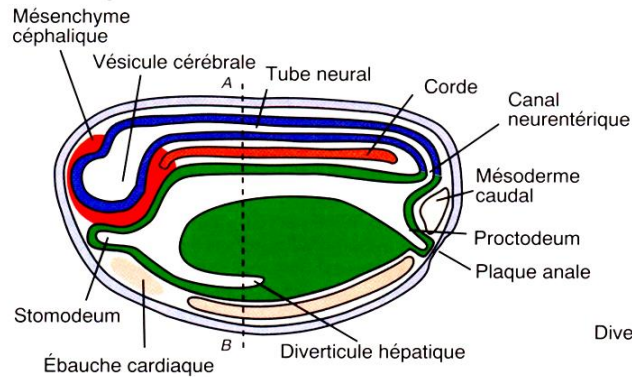
a) Stade de la plaque neurale



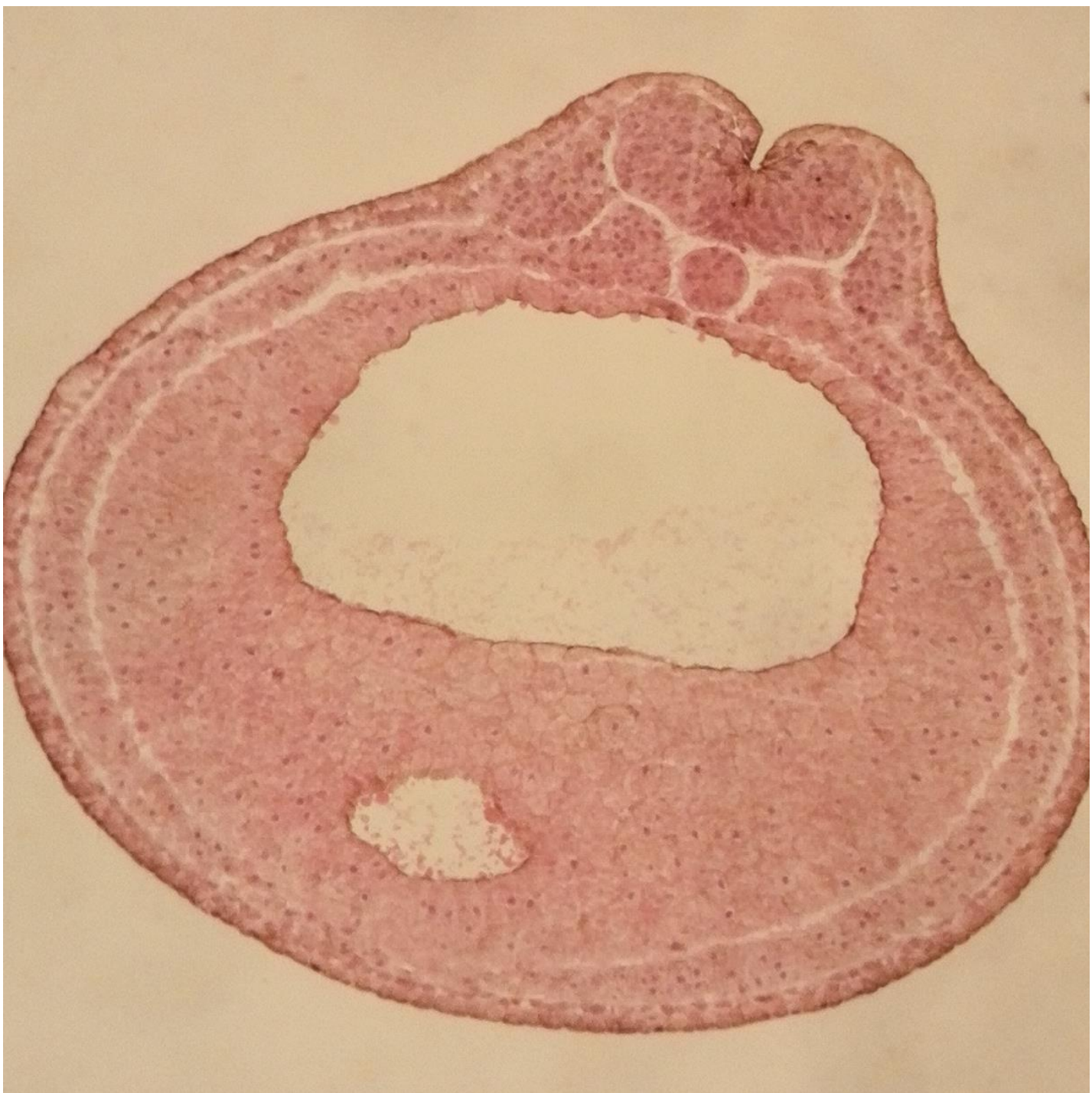
b) Stade de la gouttière neurale



c) Stade du tube neural



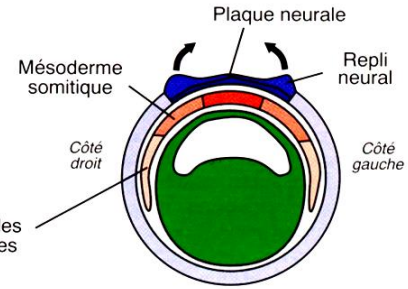
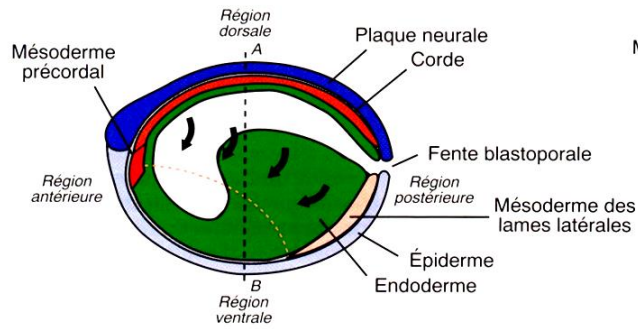
3



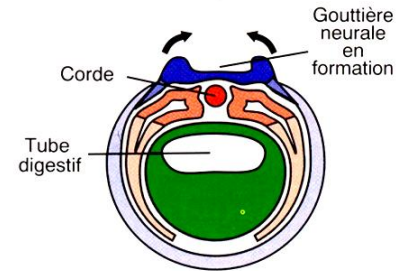
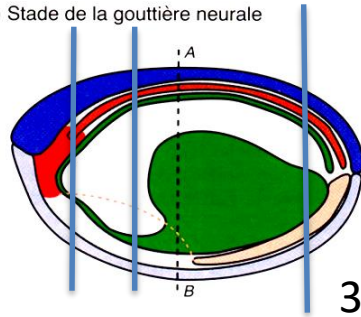
Coupes sagittales

Coupes transversales
(selon les lignes pointillées AB)

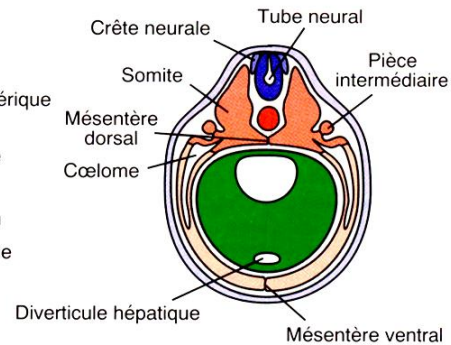
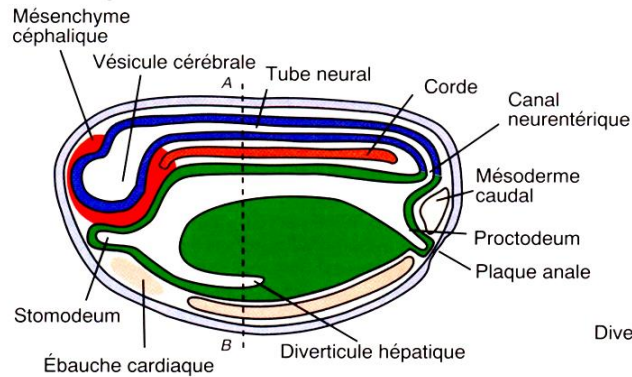
a) Stade de la plaque neurale

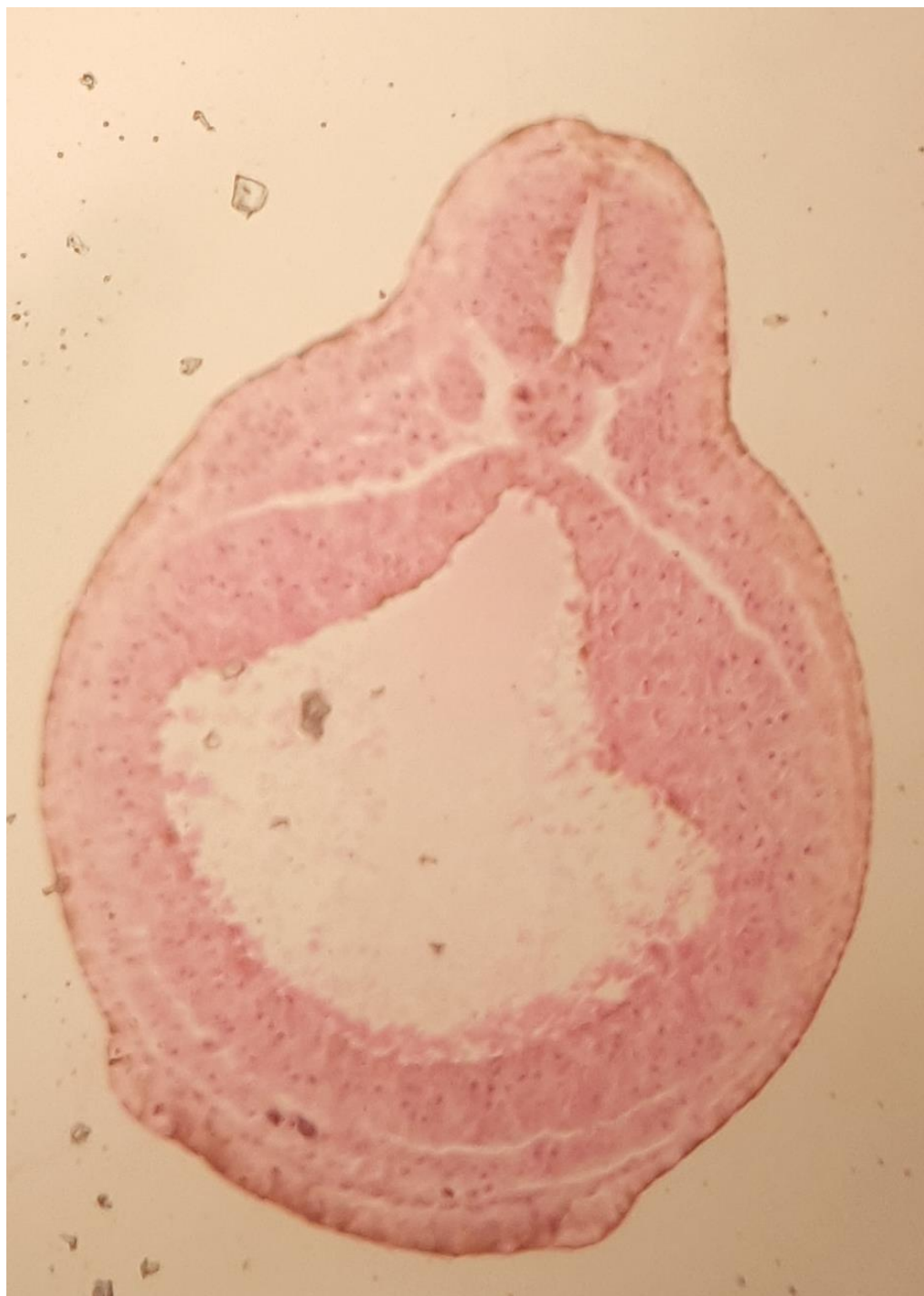


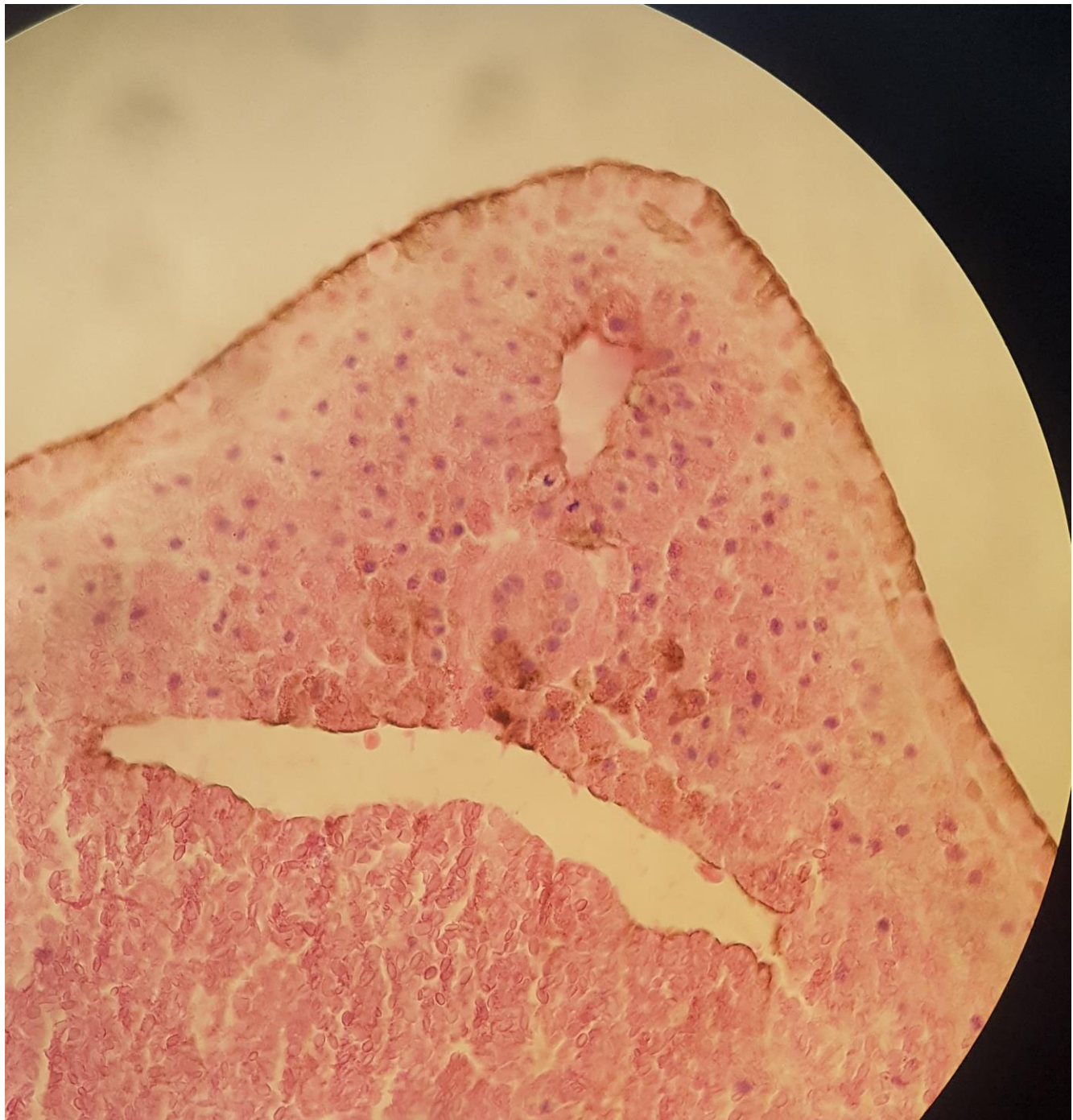
b) Stade de la gouttière neurale



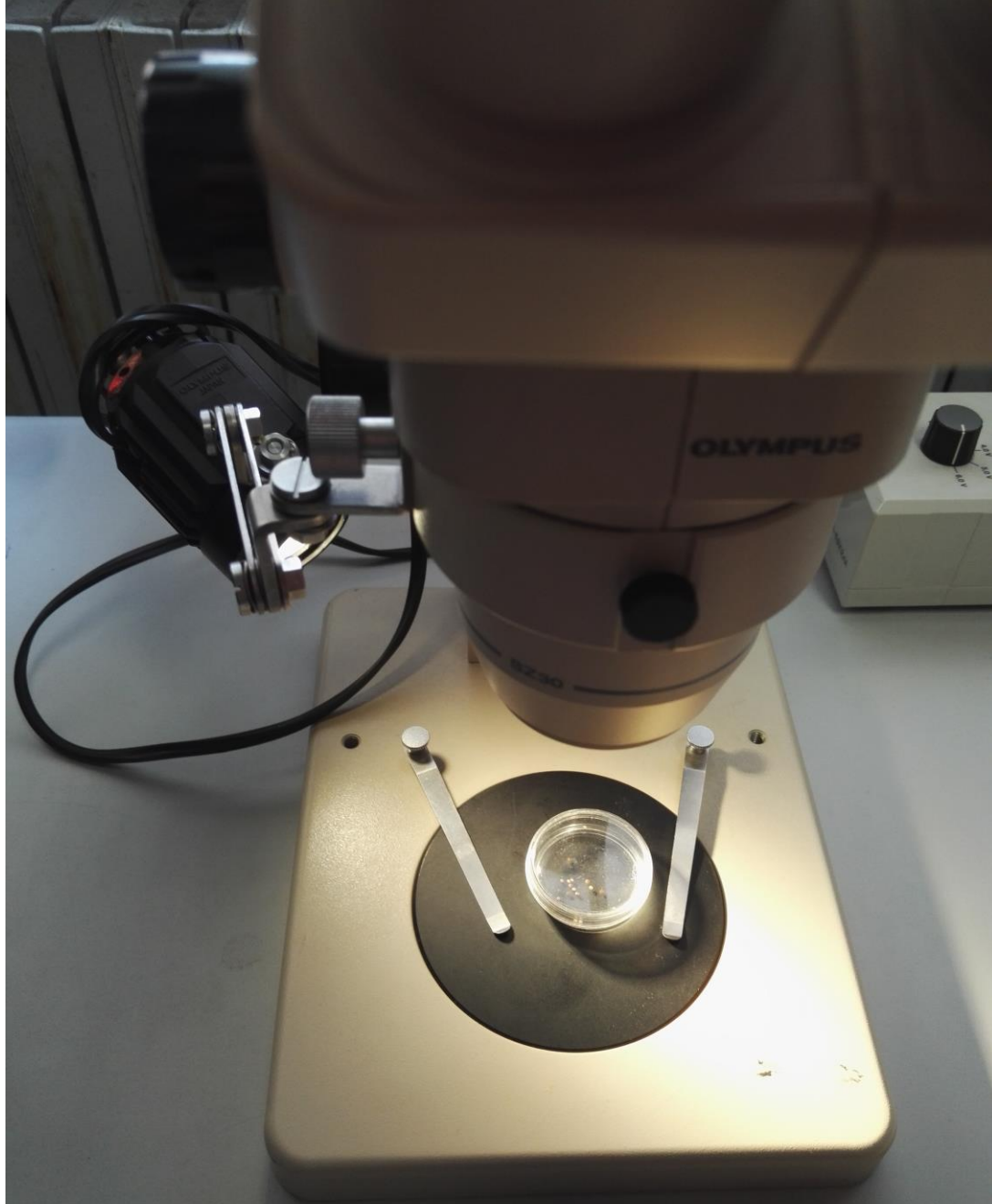
c) Stade du tube neural

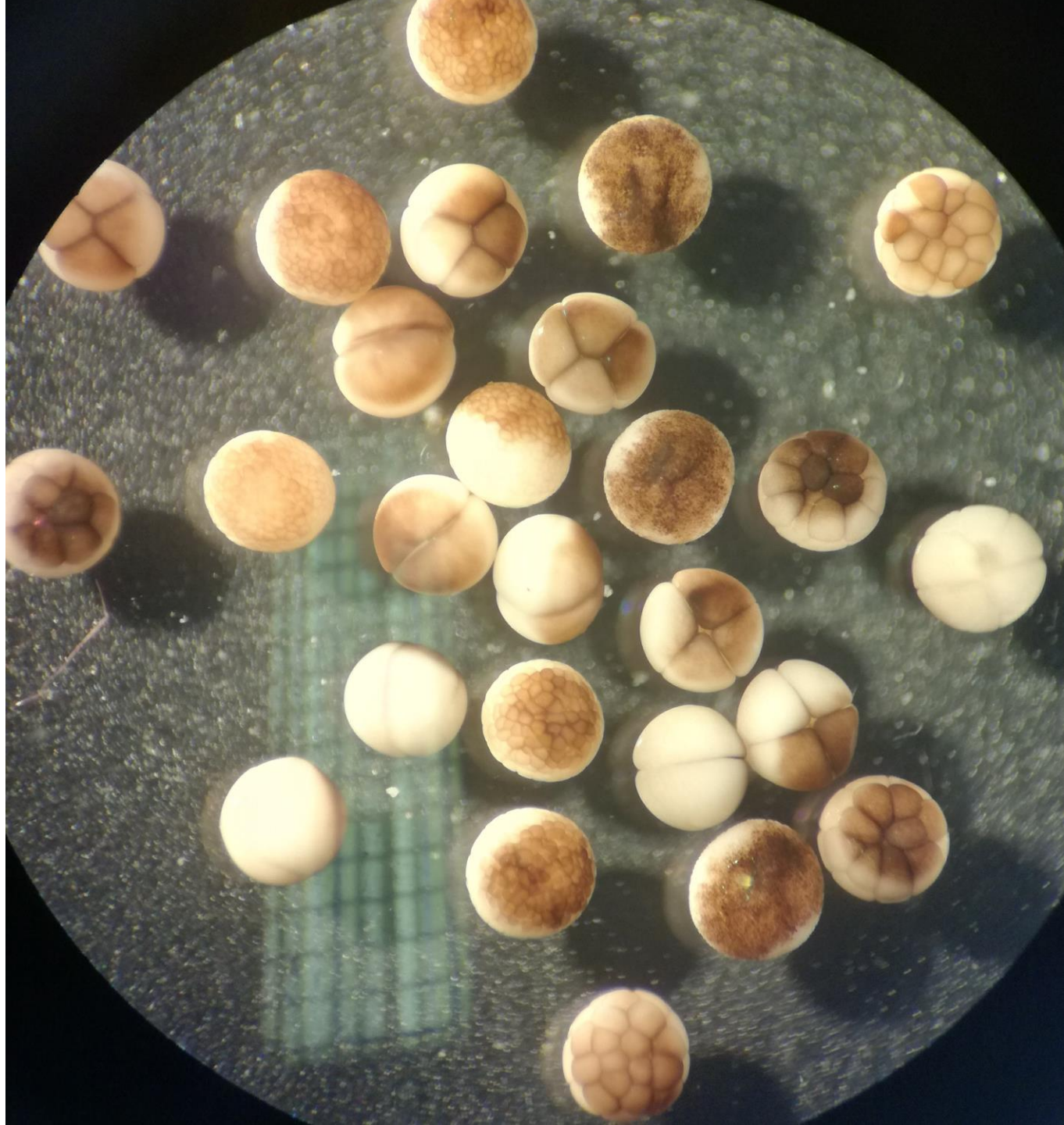


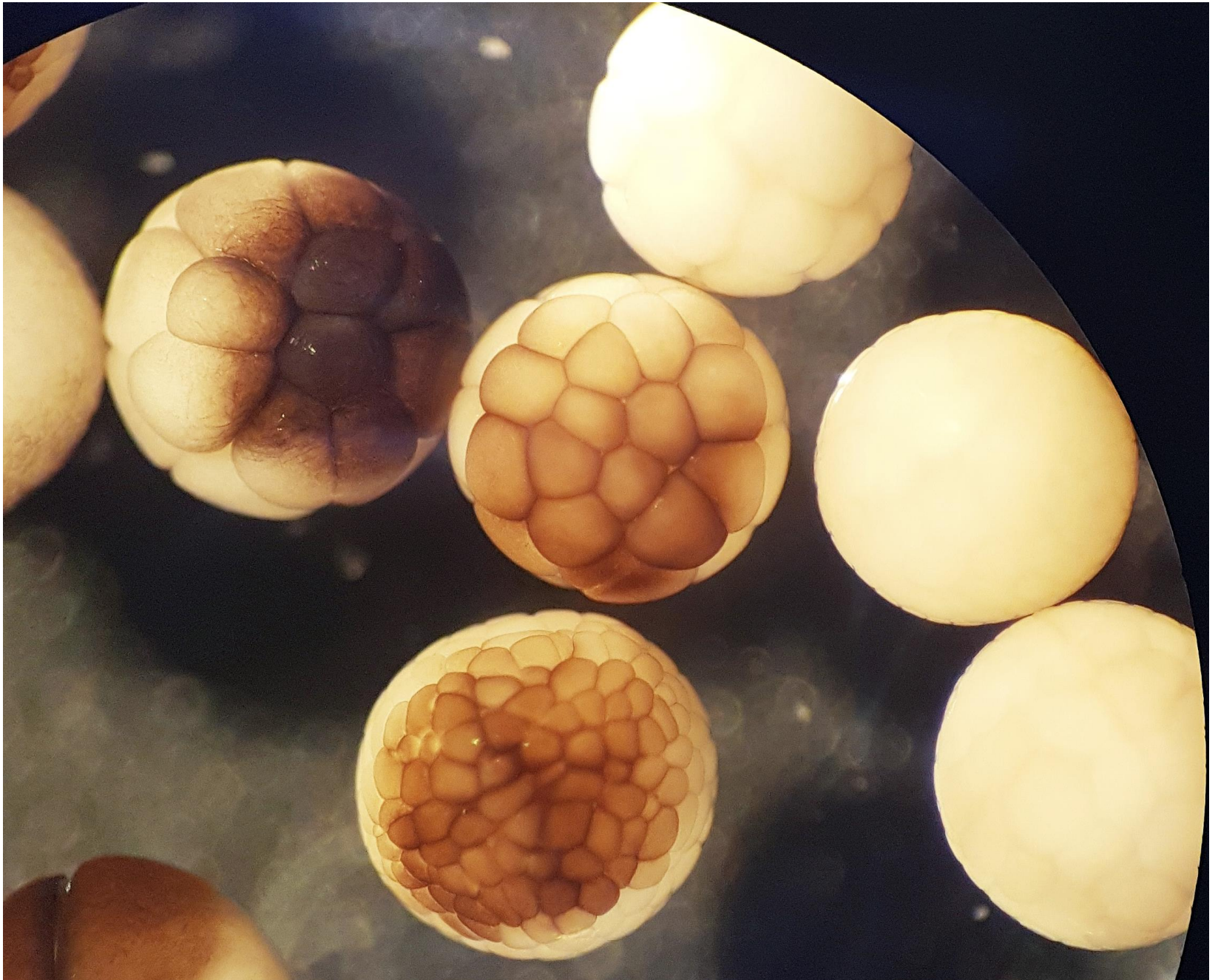














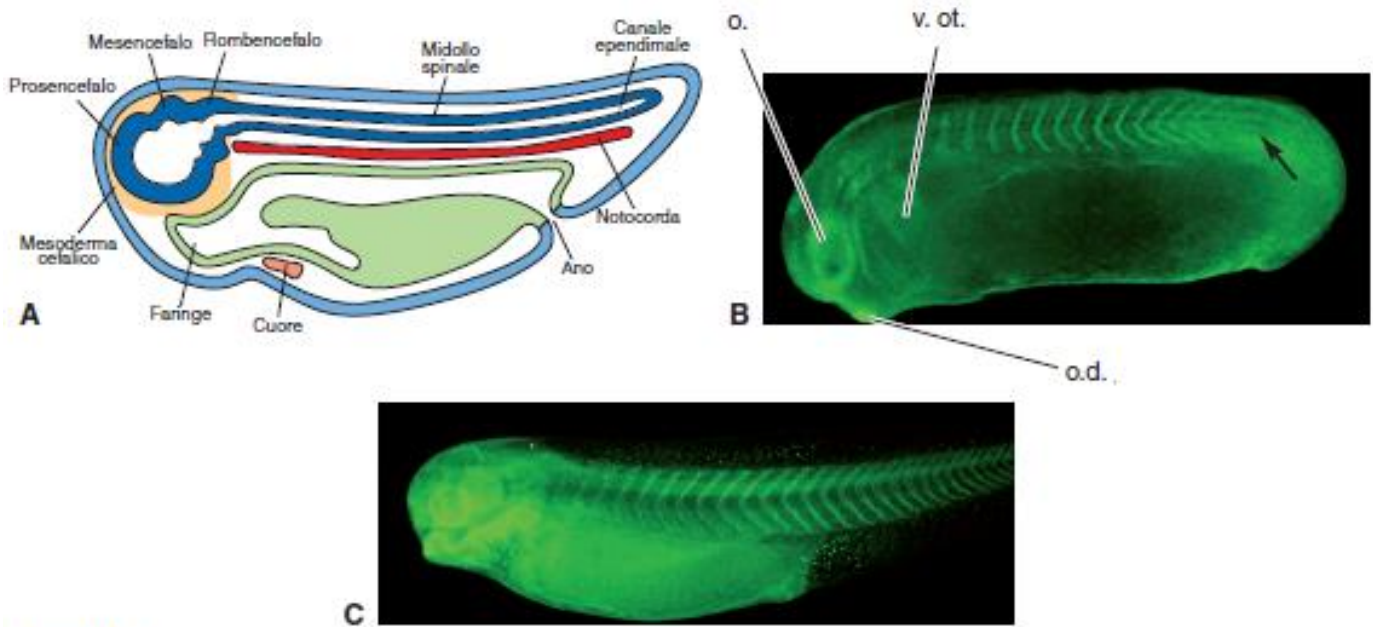
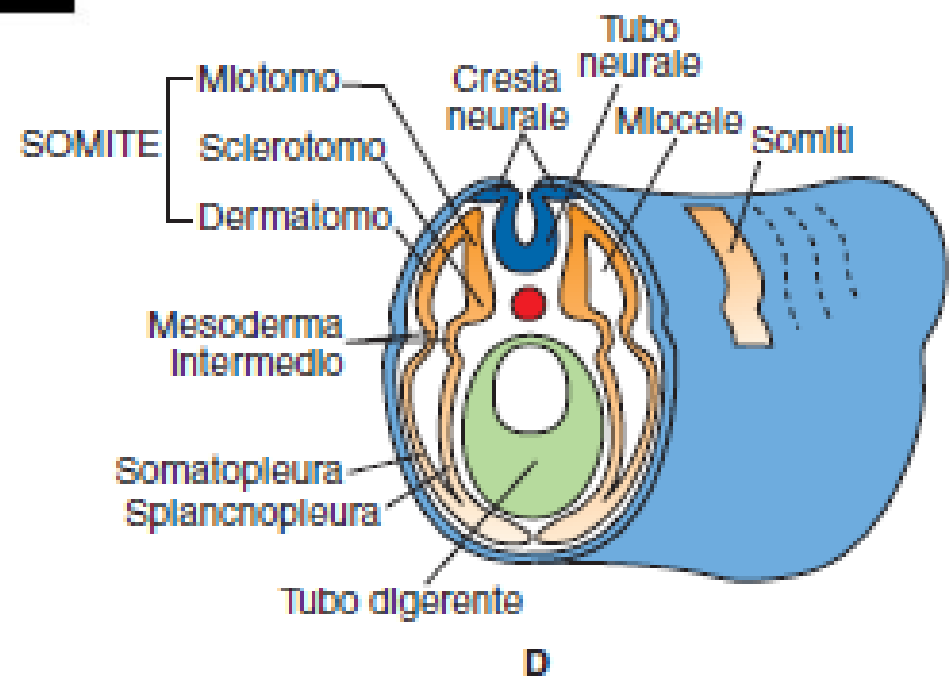
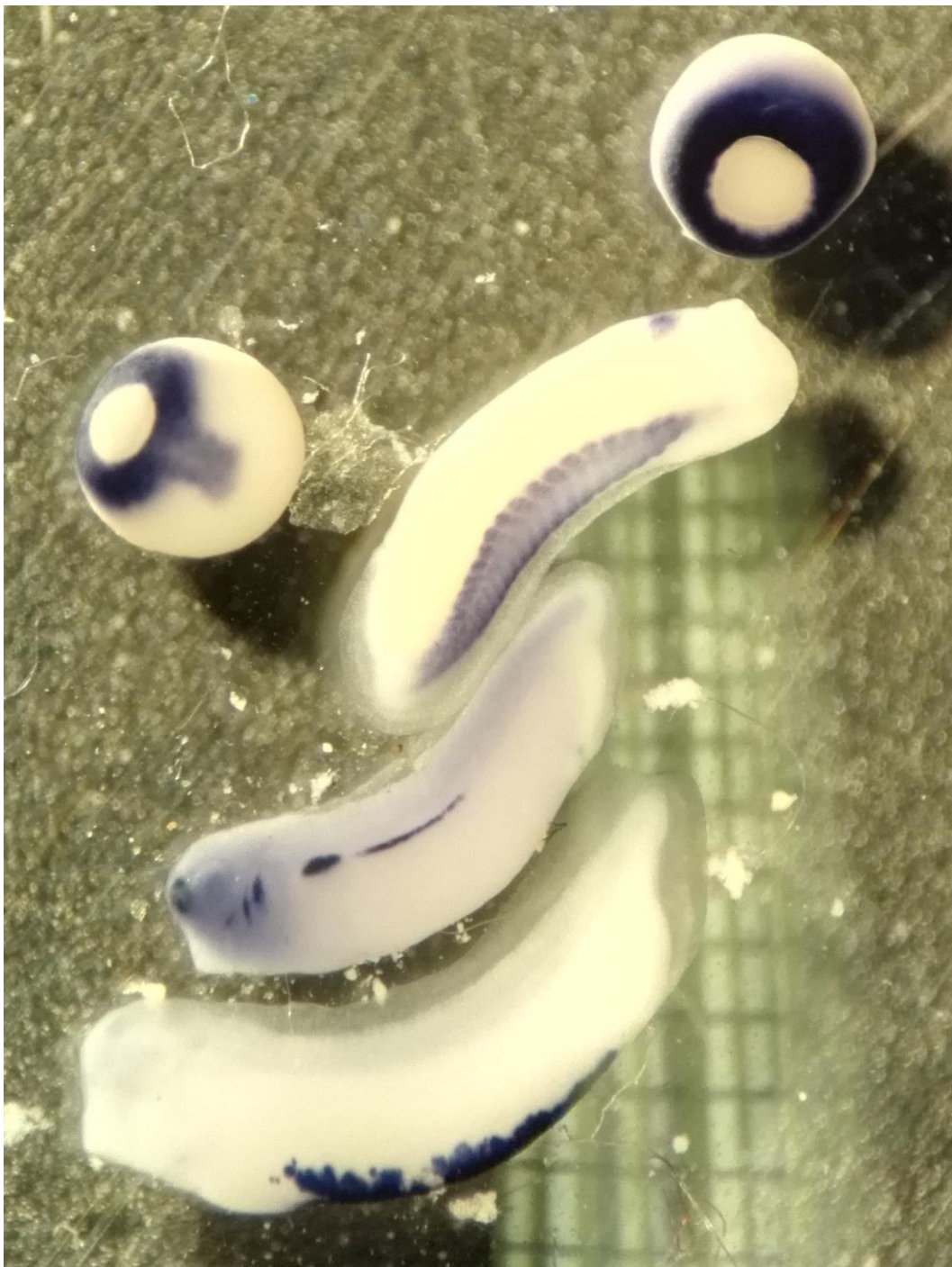
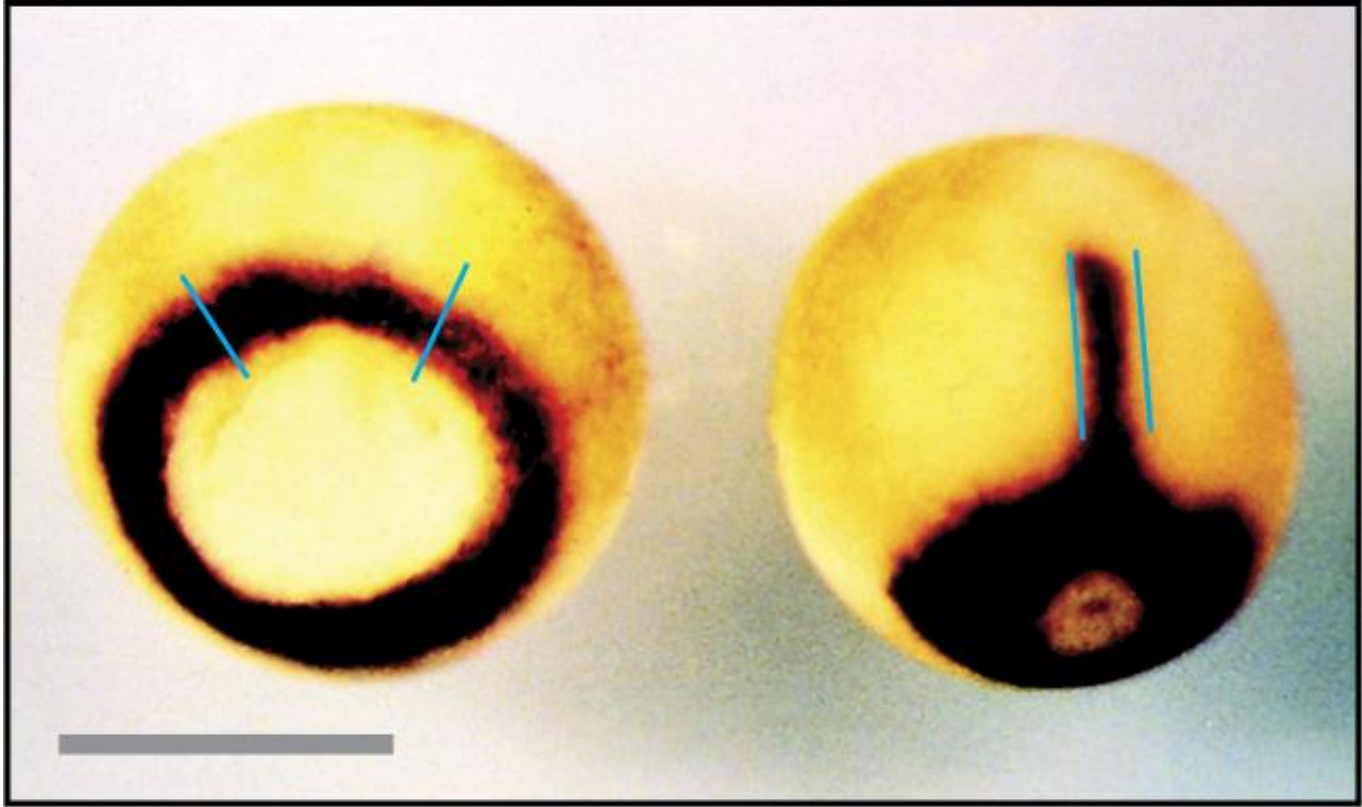


Figura 13

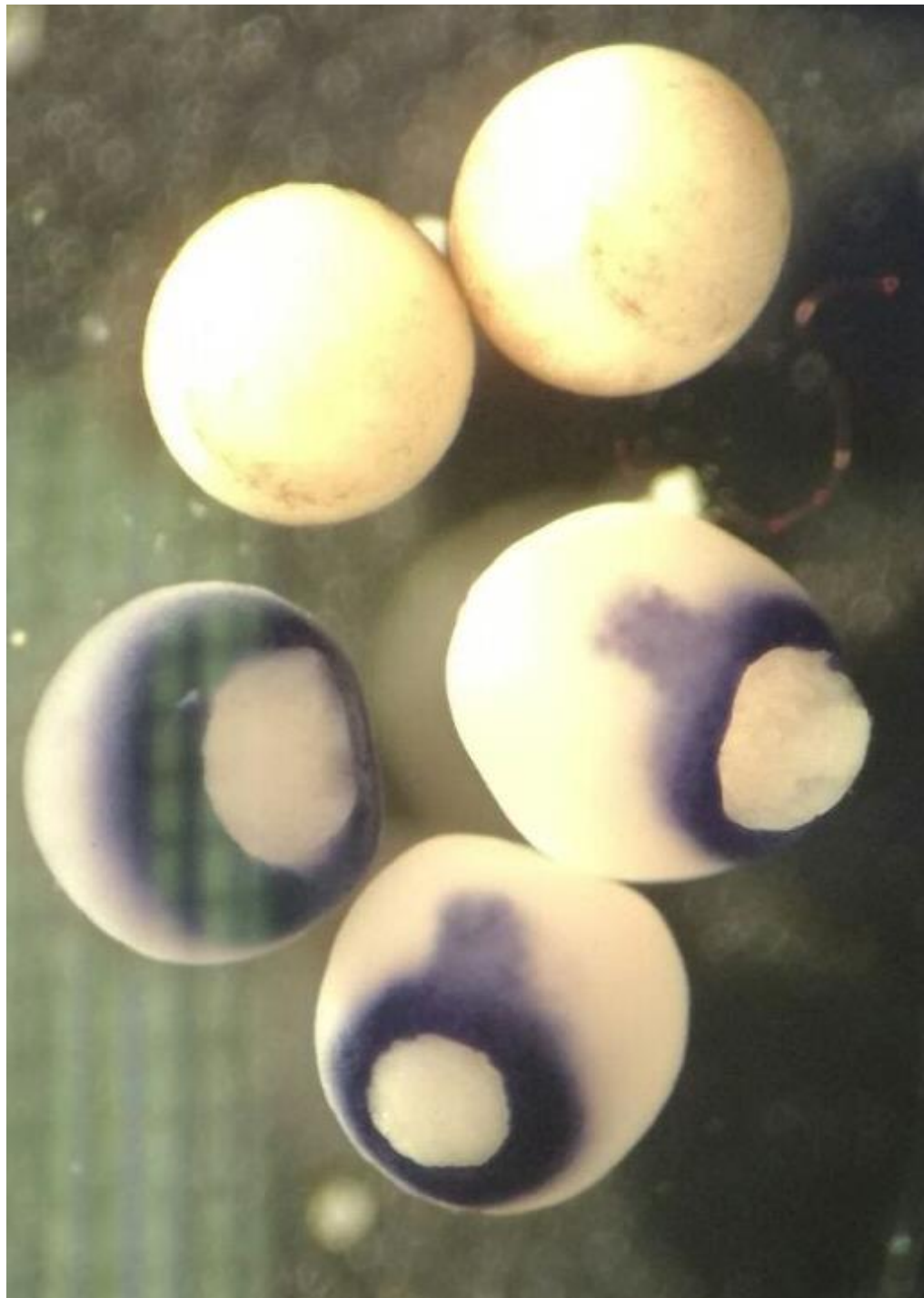


D



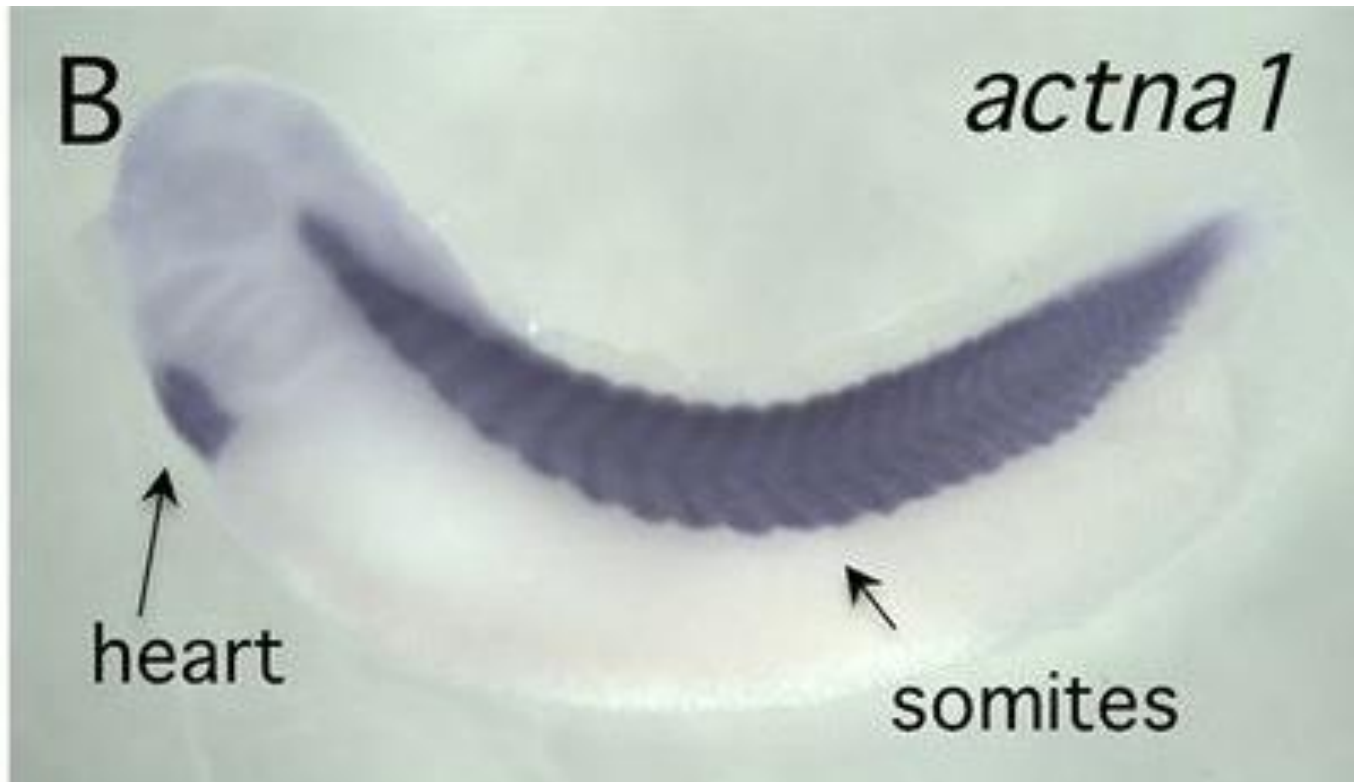


Marcatura per XBRA
Brachiury: gene
marker del mesoderma





Marcatura per isole sanguigne



Marcatura per alpha-actina:
Marca somiti e abbozzo cardiaco



Marcatura del pronefro e condotti associati

- [https://youtu.be/ Nl68Nc_Dlc](https://youtu.be/Nl68Nc_Dlc)
- <https://youtu.be/dXpAbezdOho>