

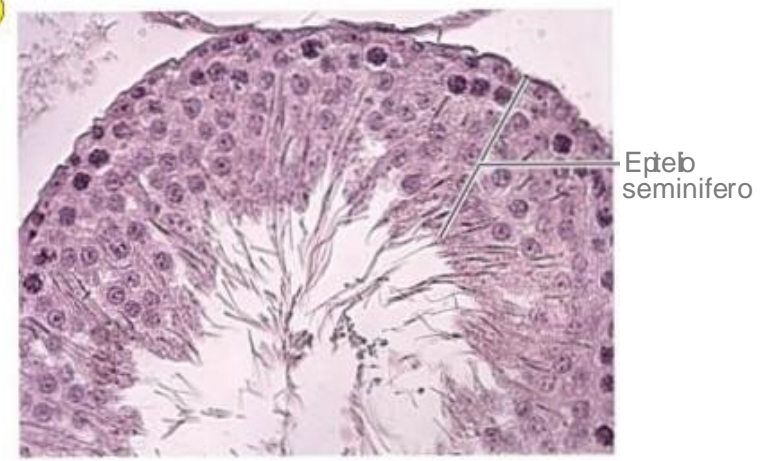
Esercitazione 1

Gameti e Gonadi

@ - - - - Condotto deferente
Epididimo
Testicolo

Ⓡ Sezione trasversale di tubulo seminifero

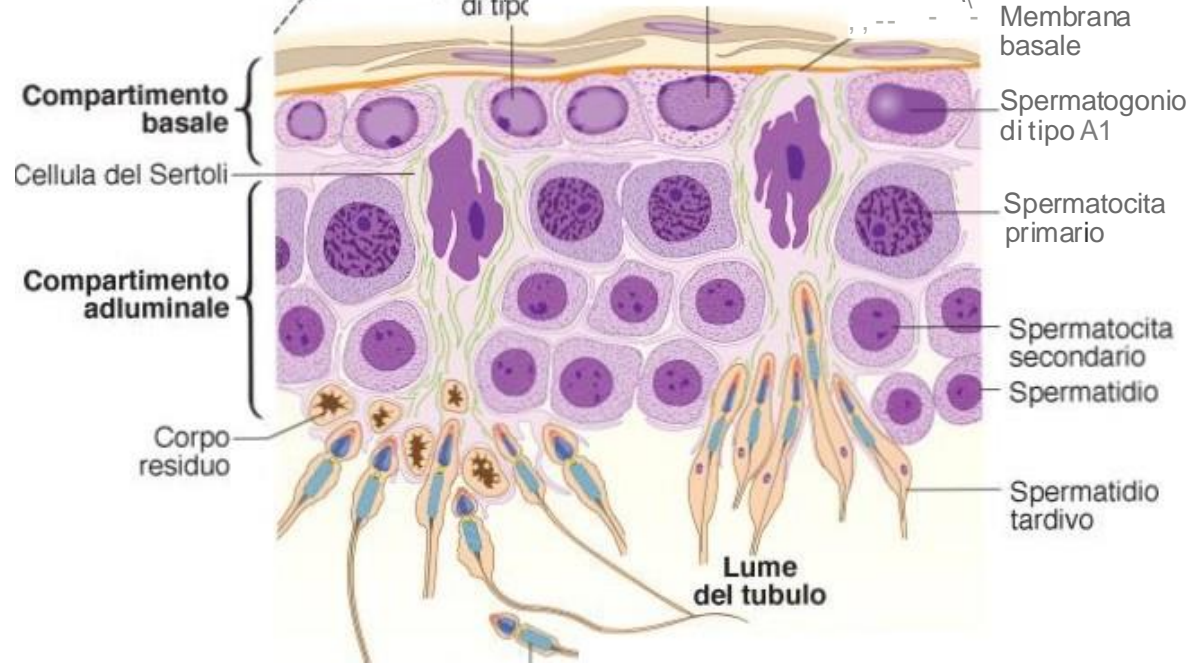
ⓓ



Tubulo seminifero

Spermatogonio di tipo A2
Spermatogonio di tipo A1

Ⓢ



Spermatozoo

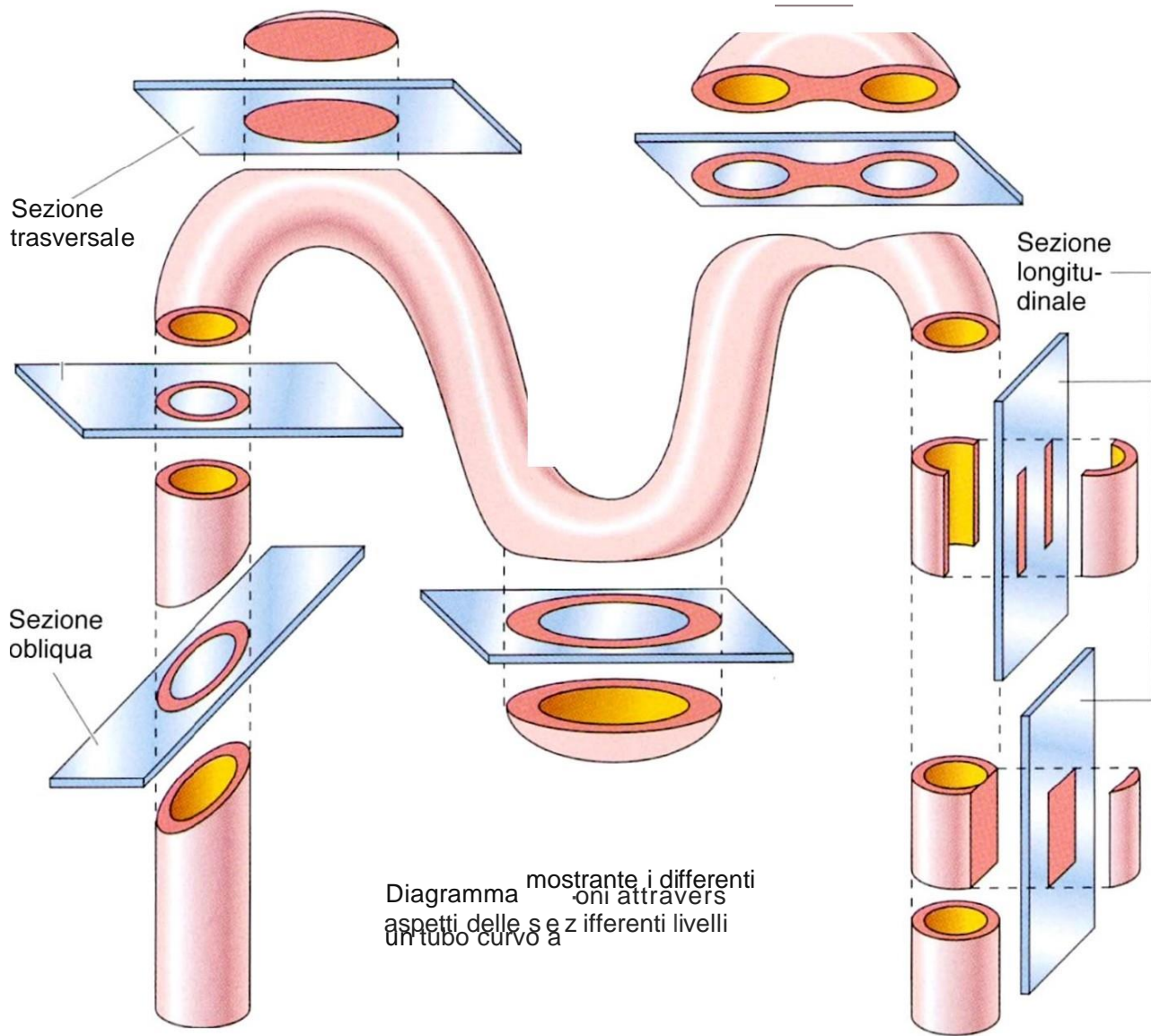
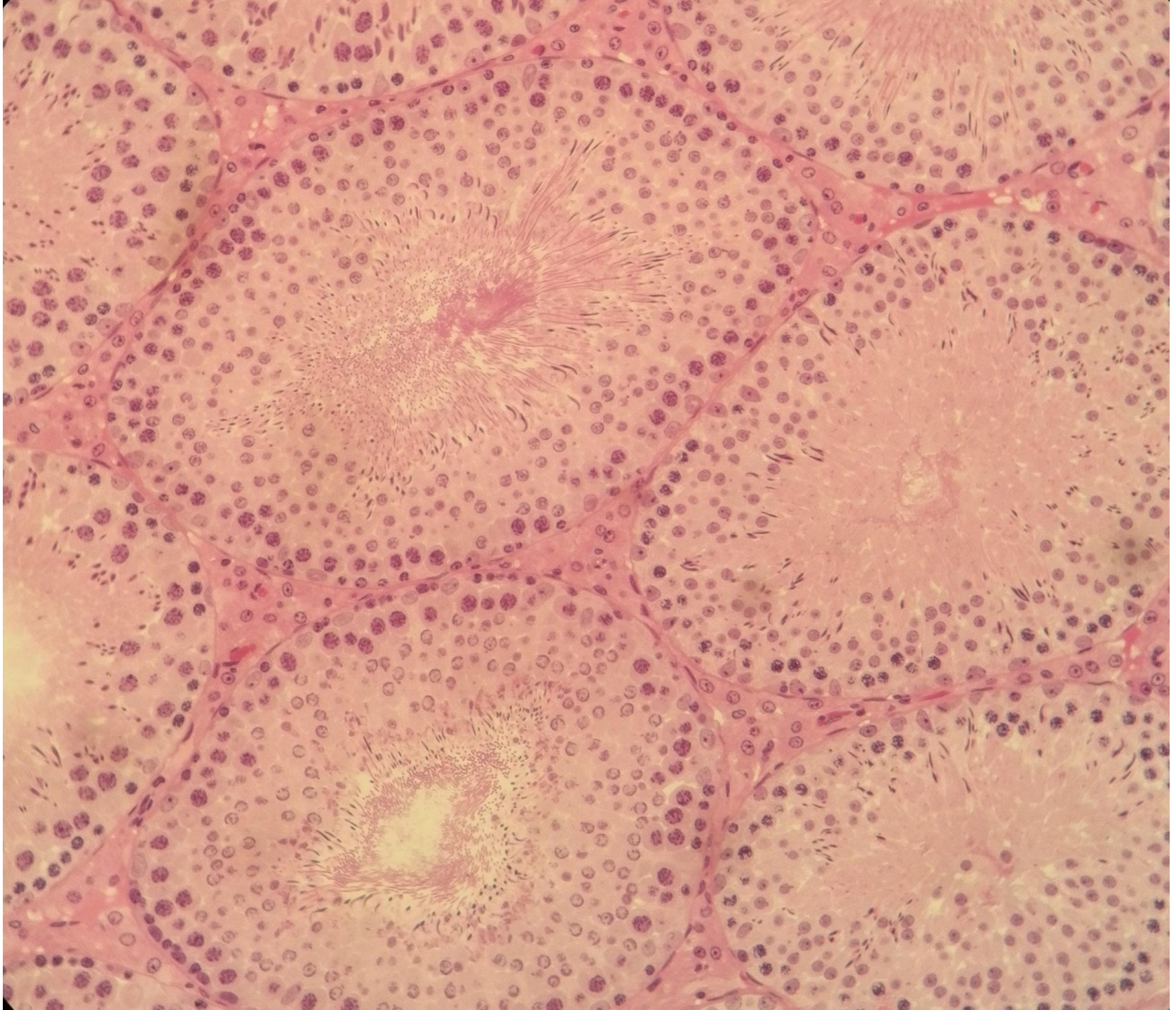
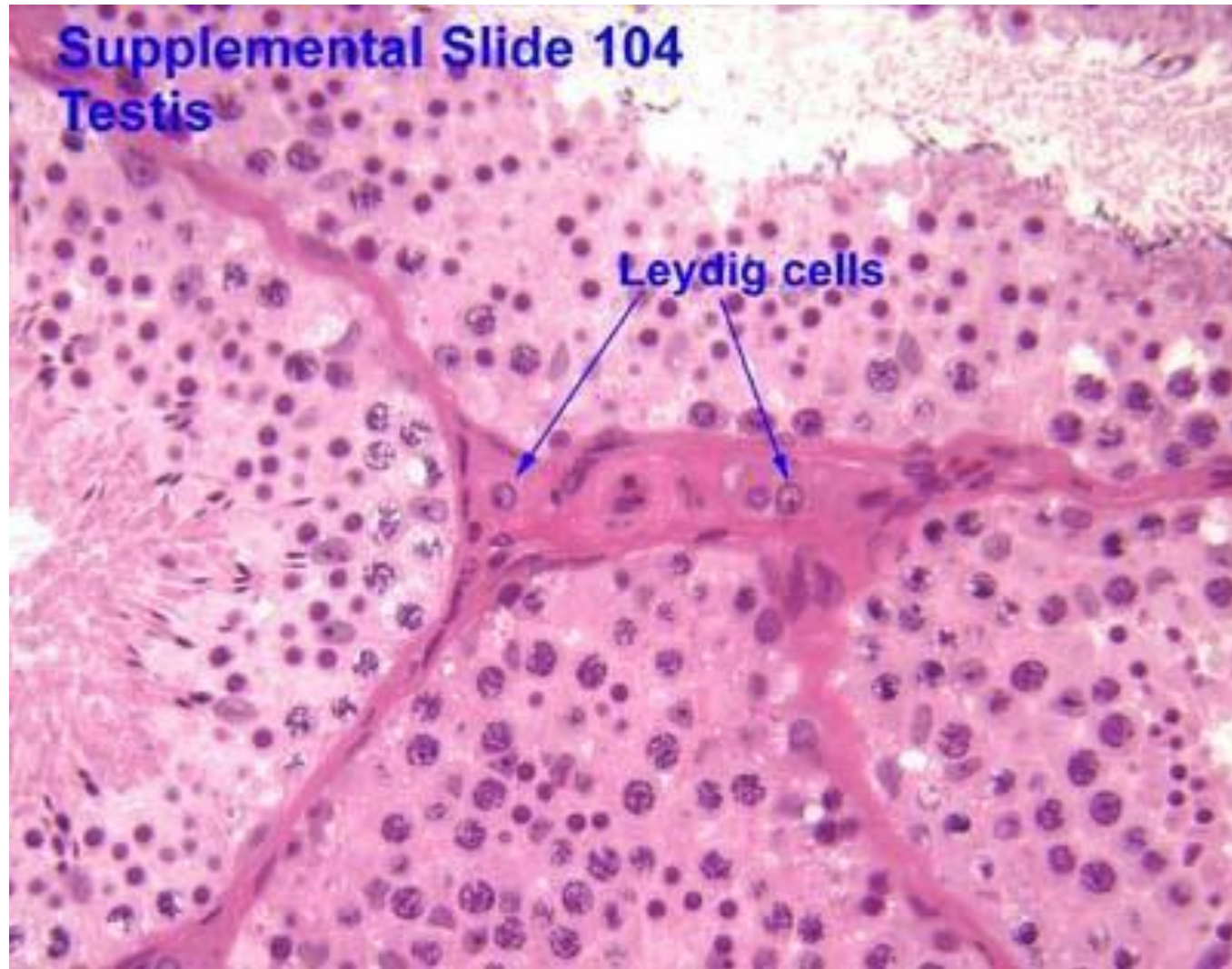


Diagramma mostrandone i differenti aspetti delle sezioni attraverso un tubo curvo a





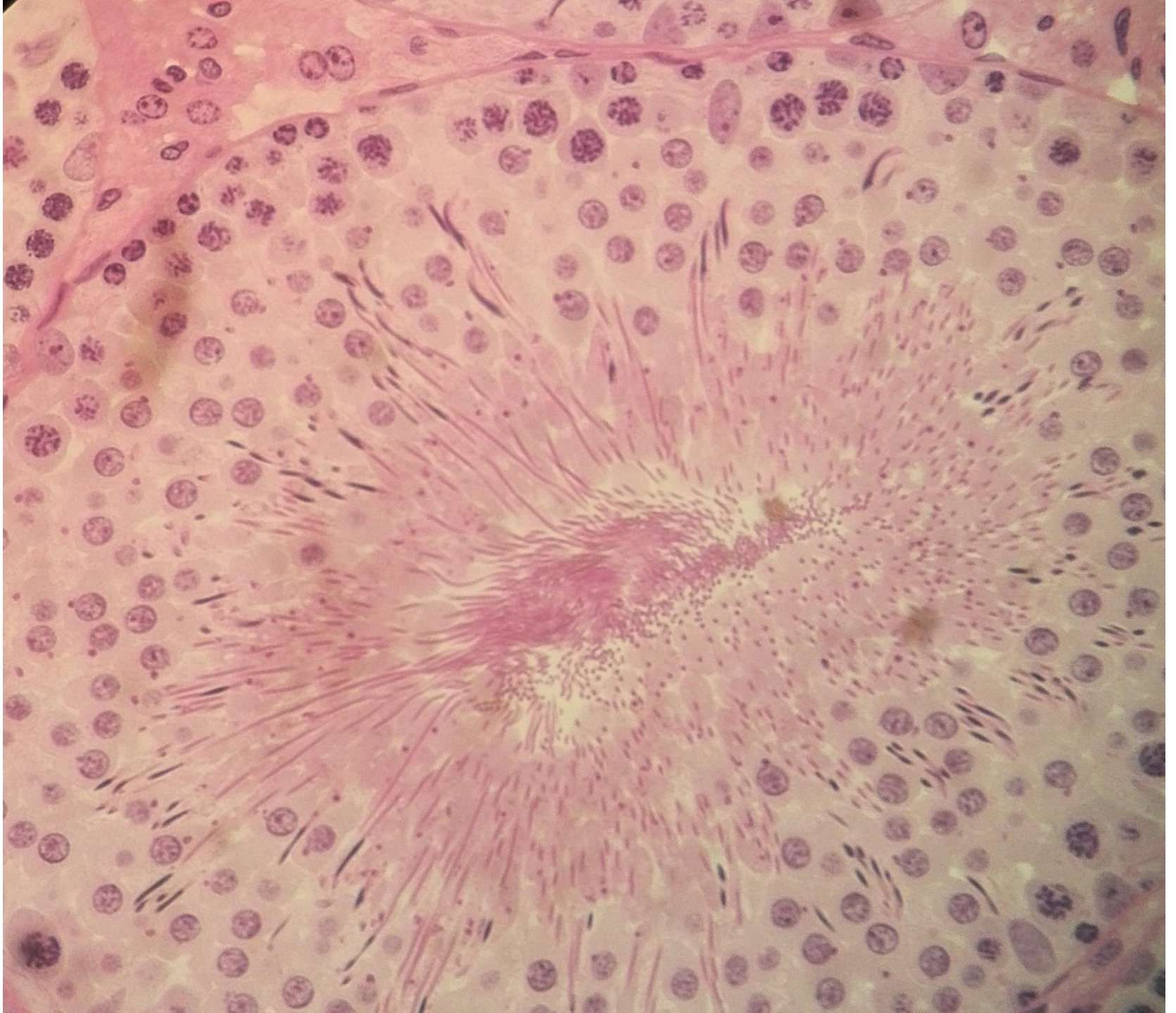
Supplemental Slide 104
Testis

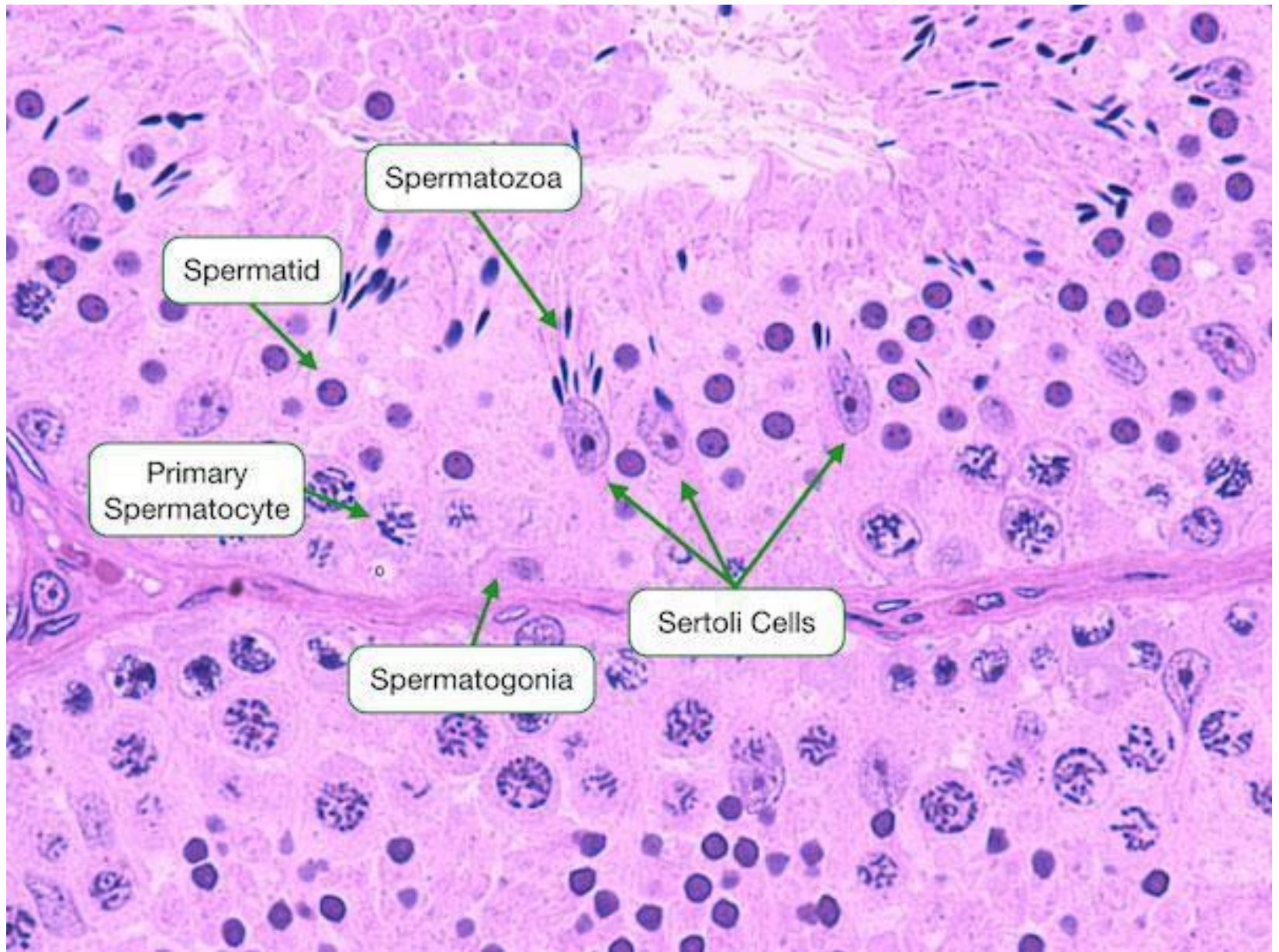


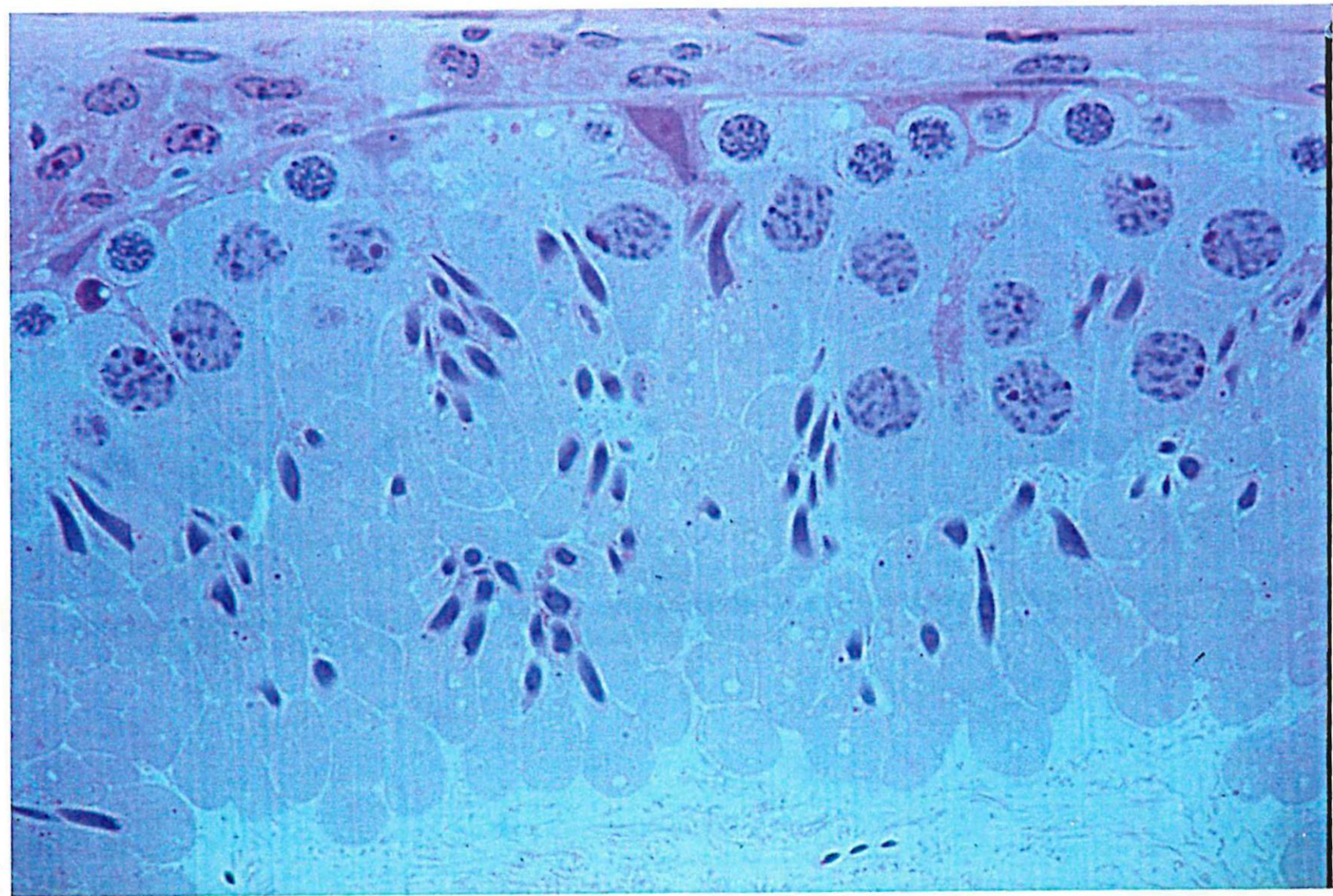
Leydig cells

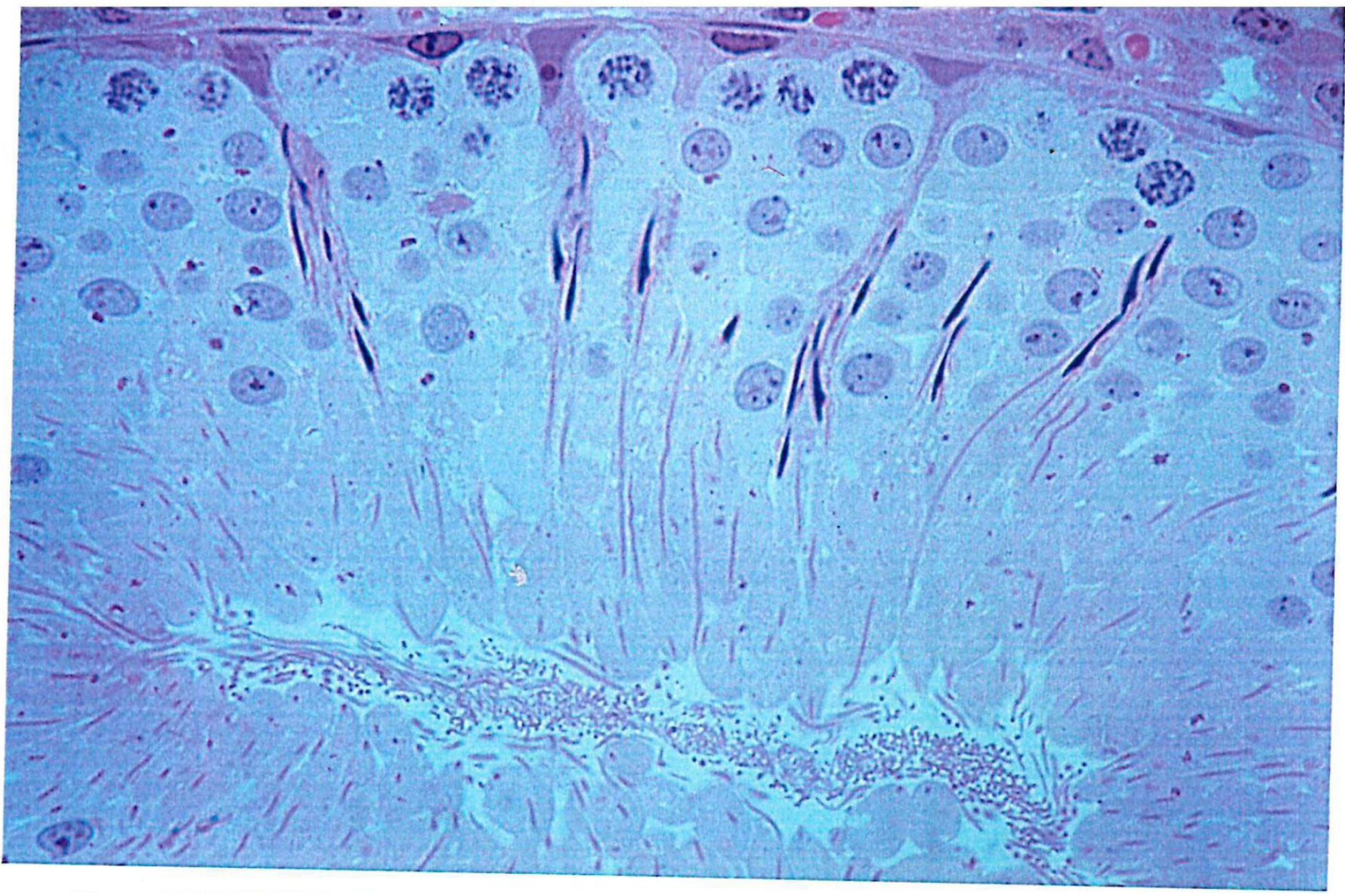


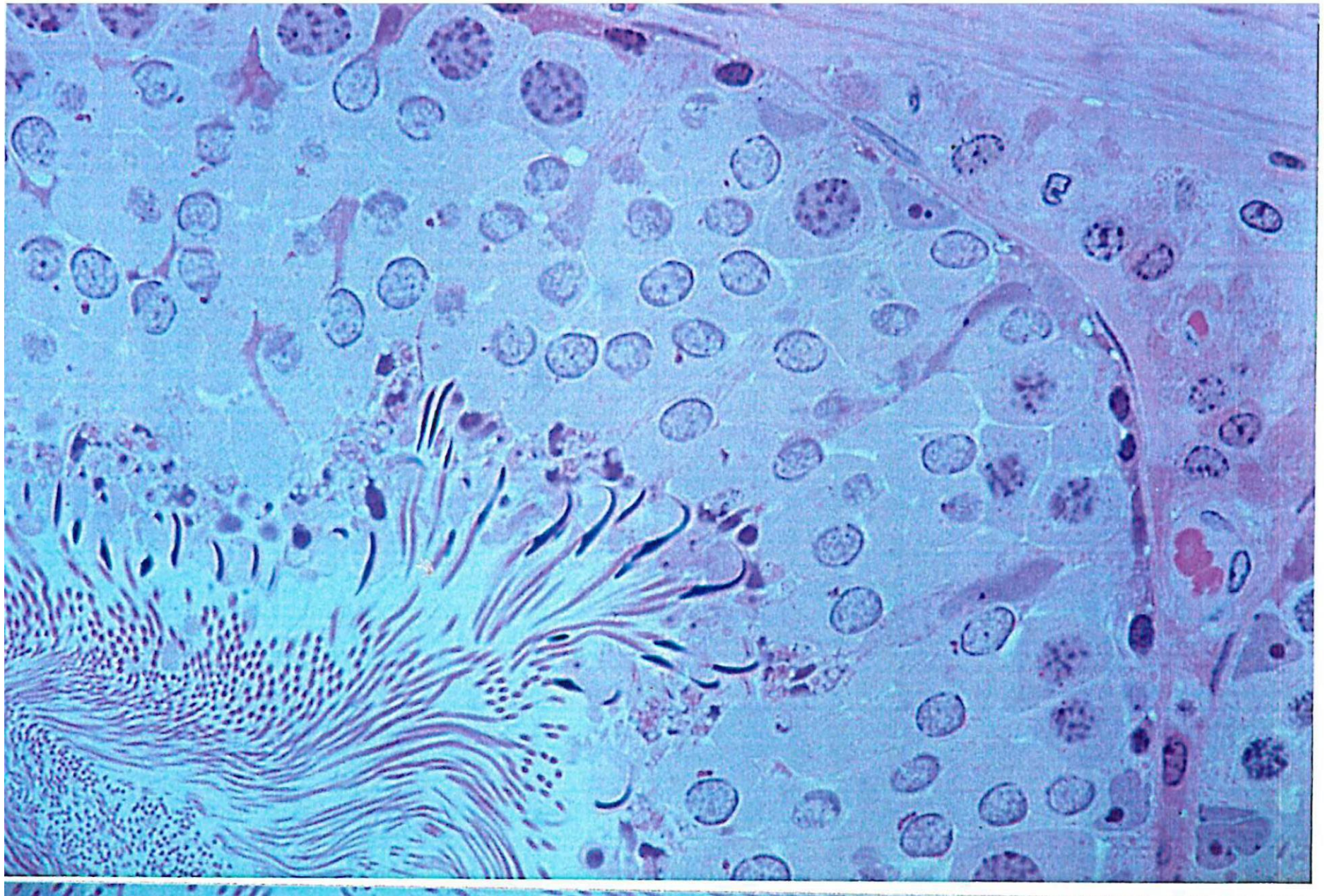
Cellule Leydig

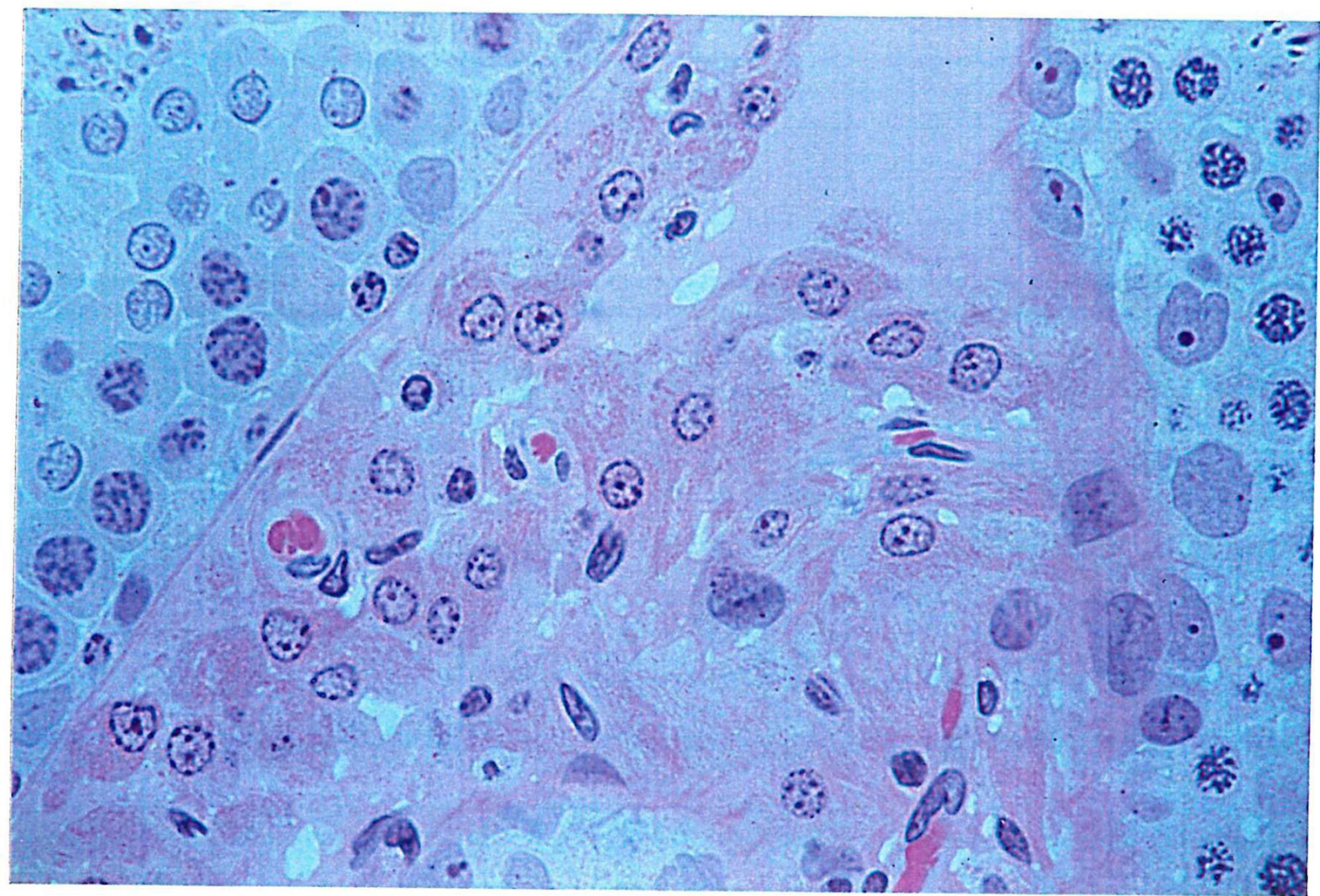




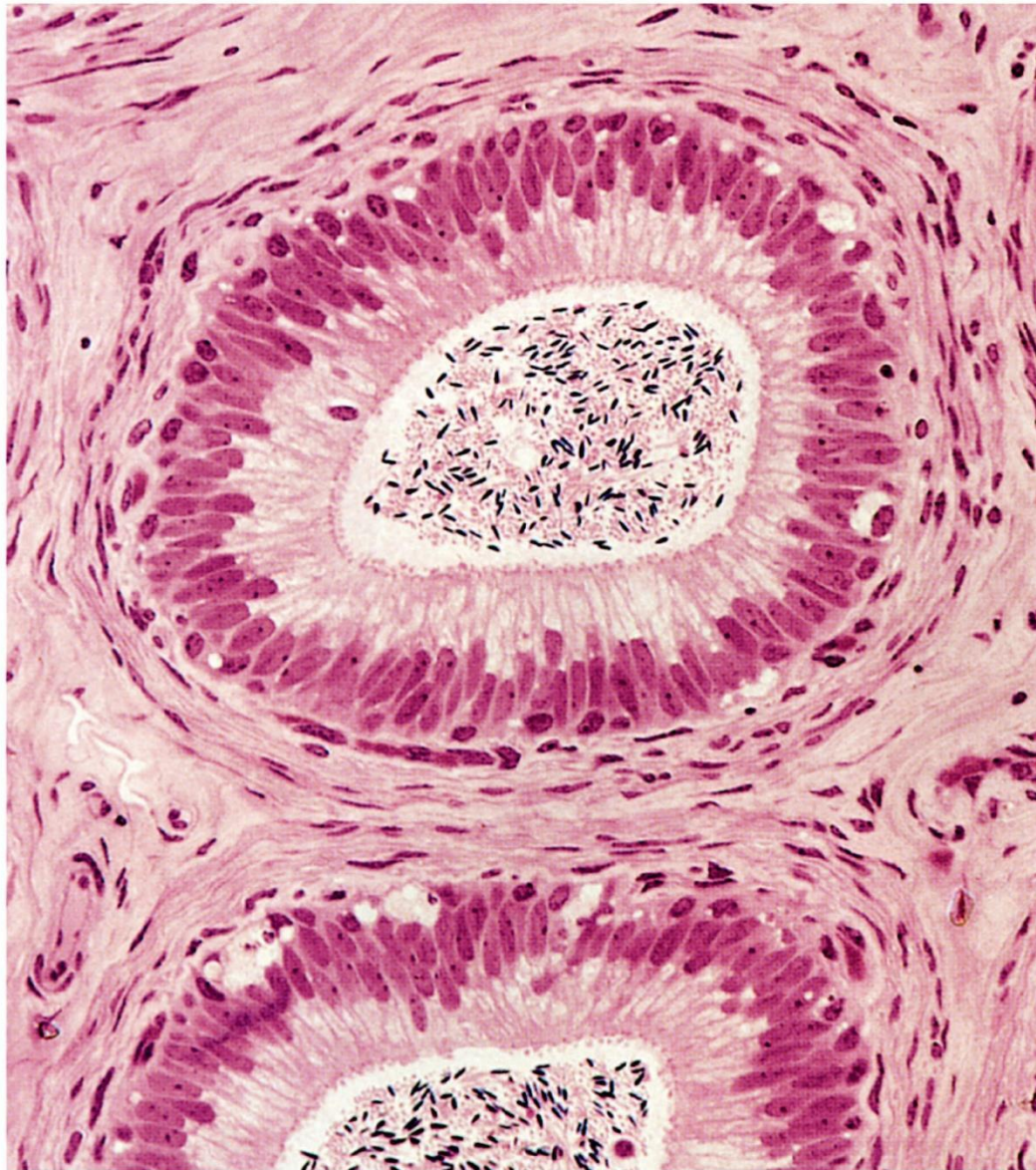




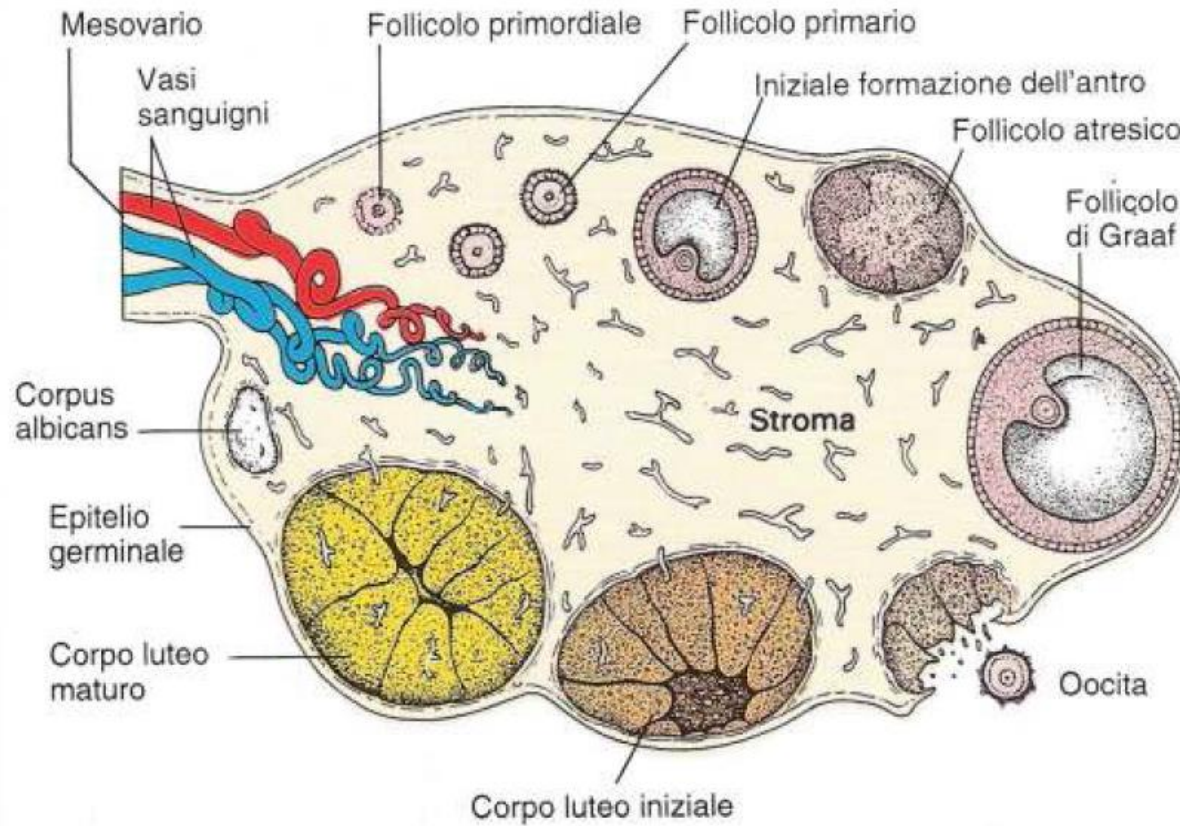


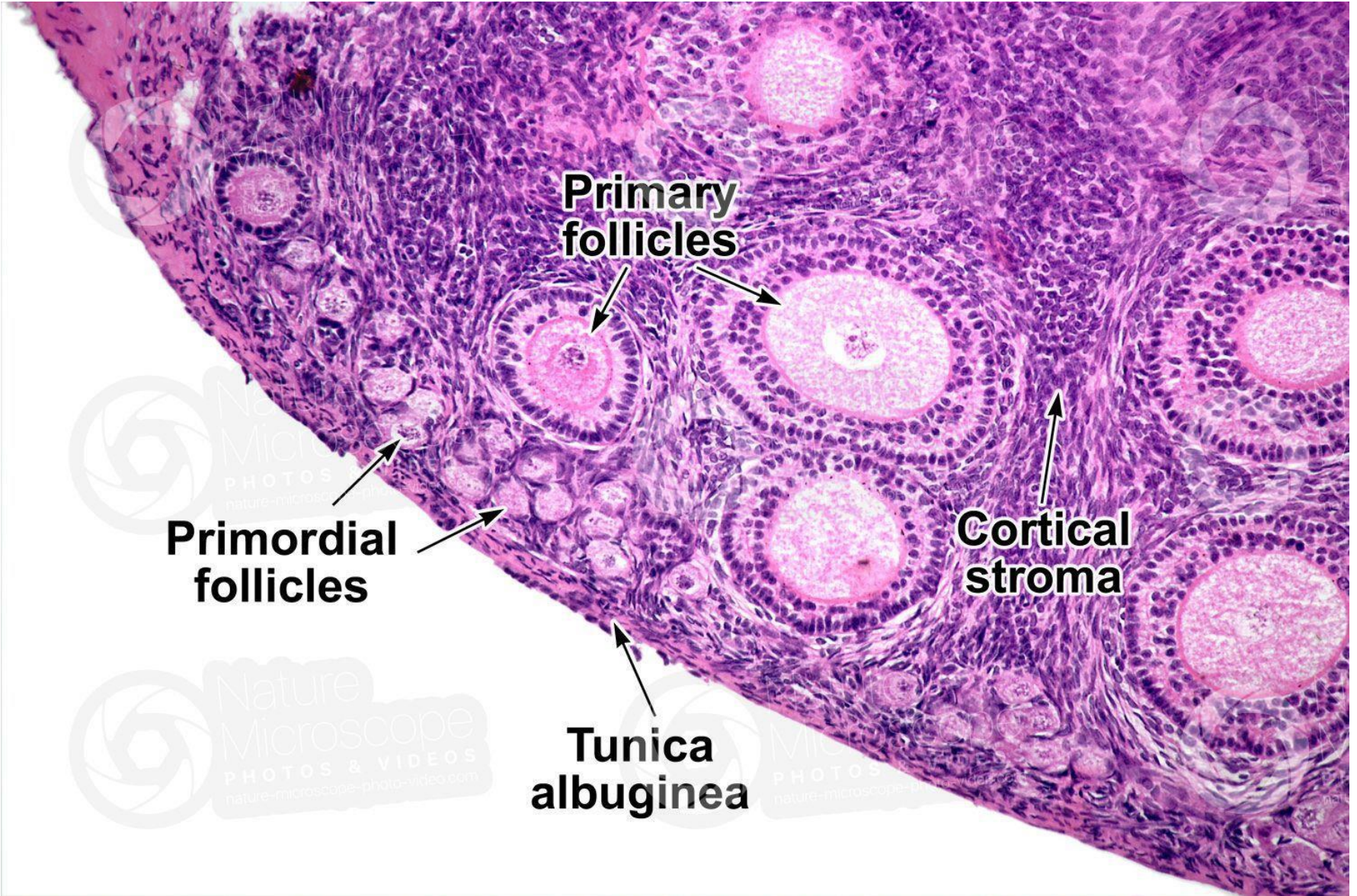


Sezione di epididimo



Follicologenesi del mammifero





**Primary
follicles**

**Primordial
follicles**

**Cortical
stroma**

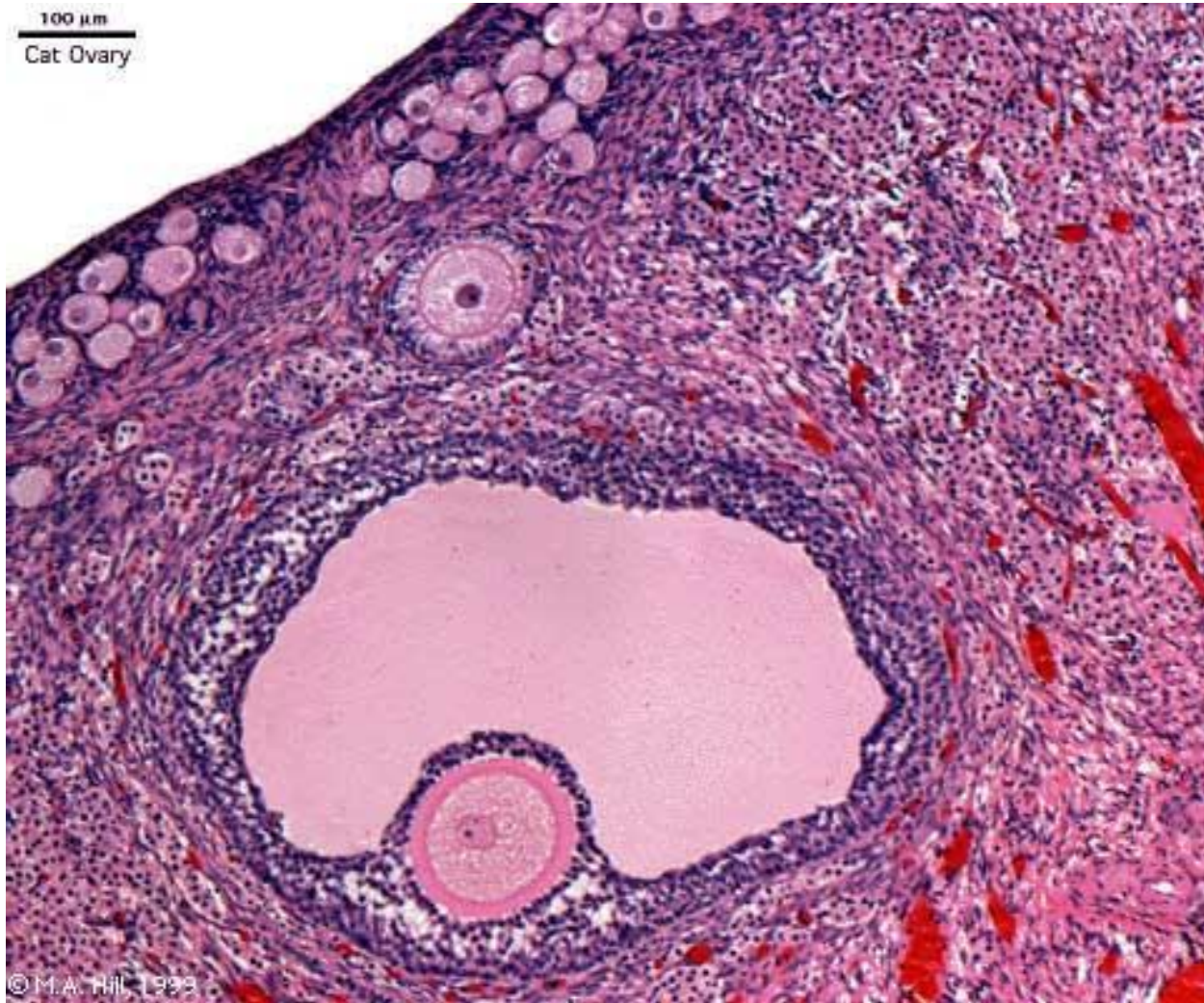
**Tunica
albuginea**

Nature
Microscope
PHOTOS
nature-microscope.com

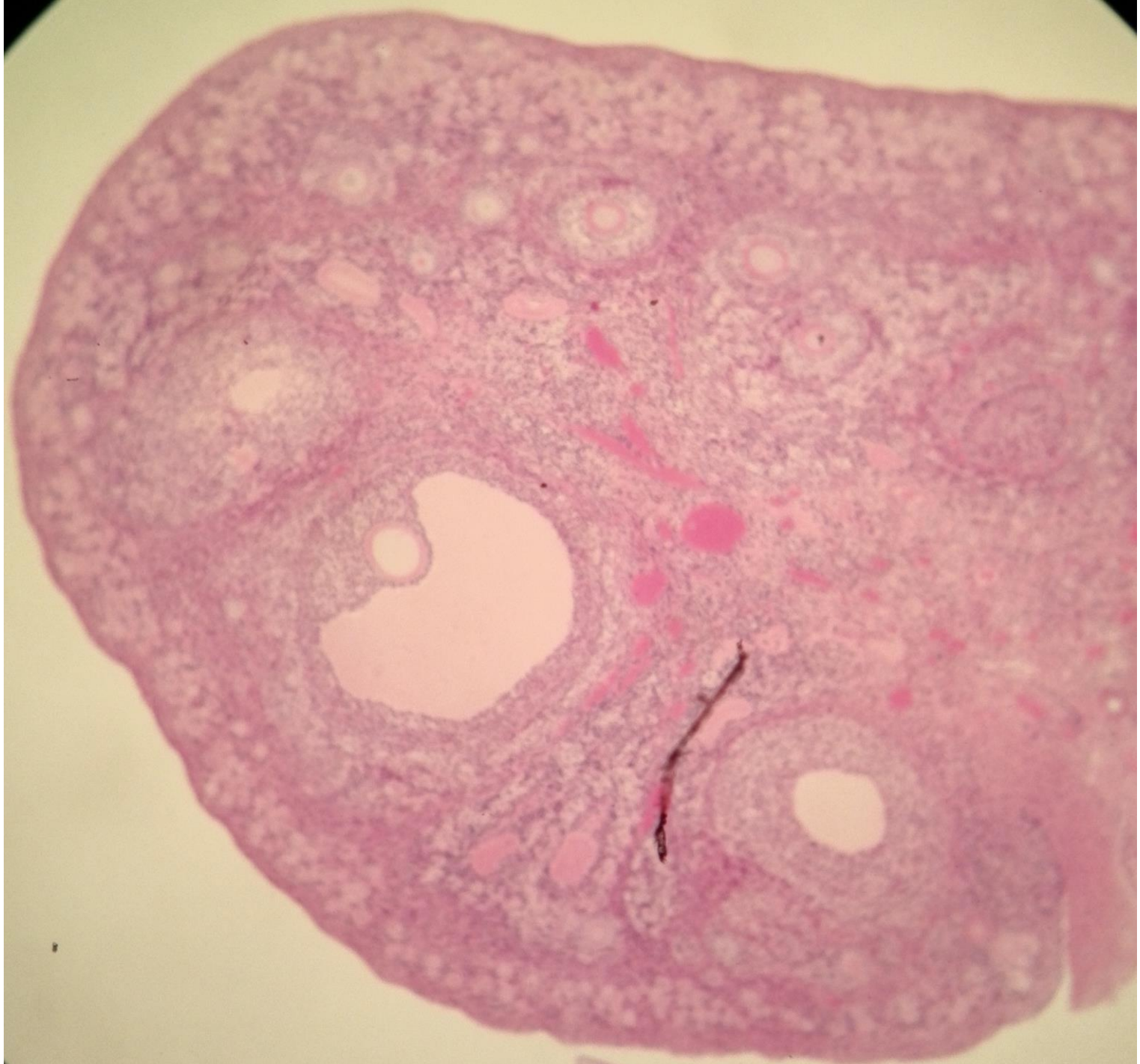
Nature
Microscope
PHOTOS & VIDEOS
nature-microscope-photo-video.com

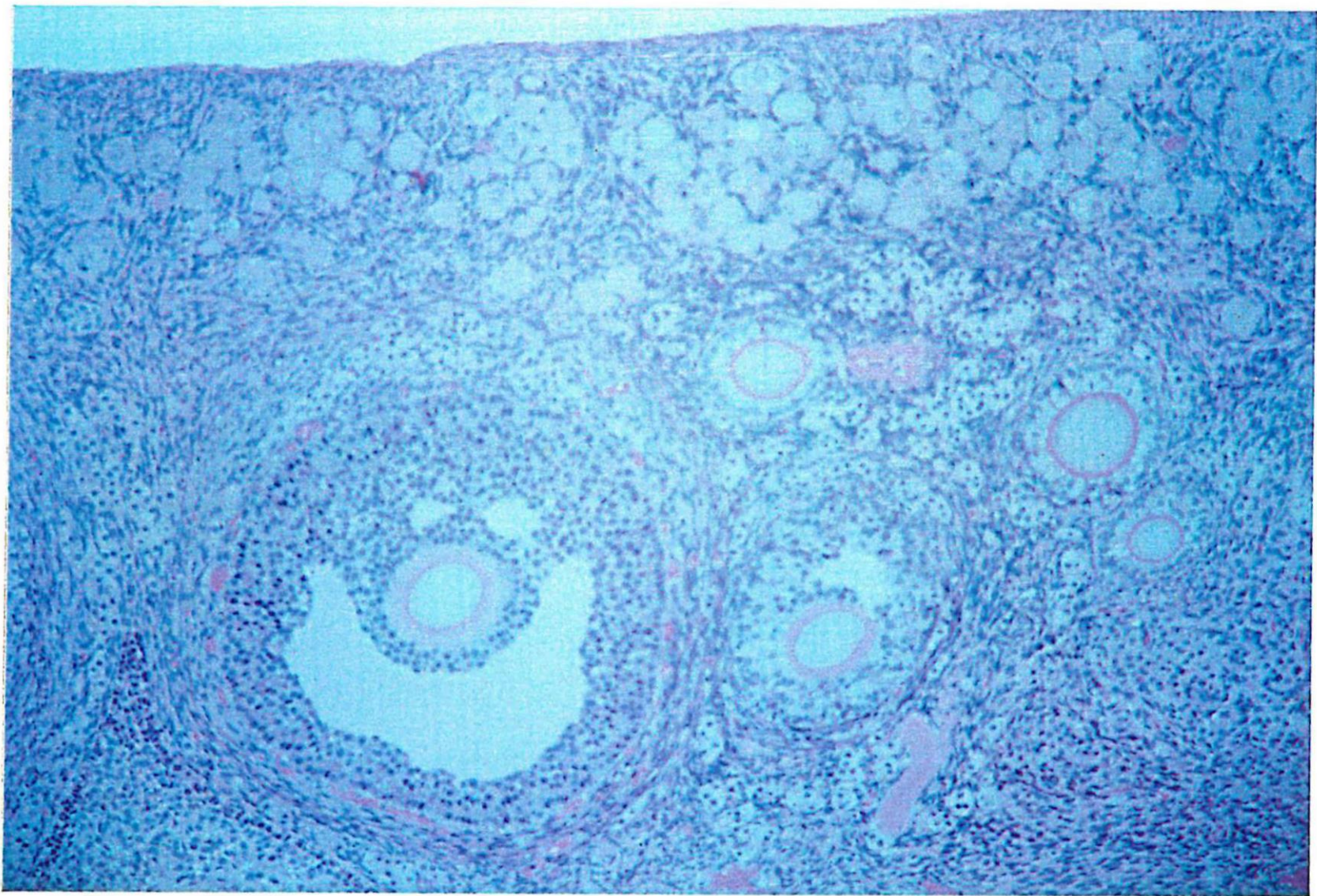
Nature
Microscope
PHOTOS
nature-microscope.com

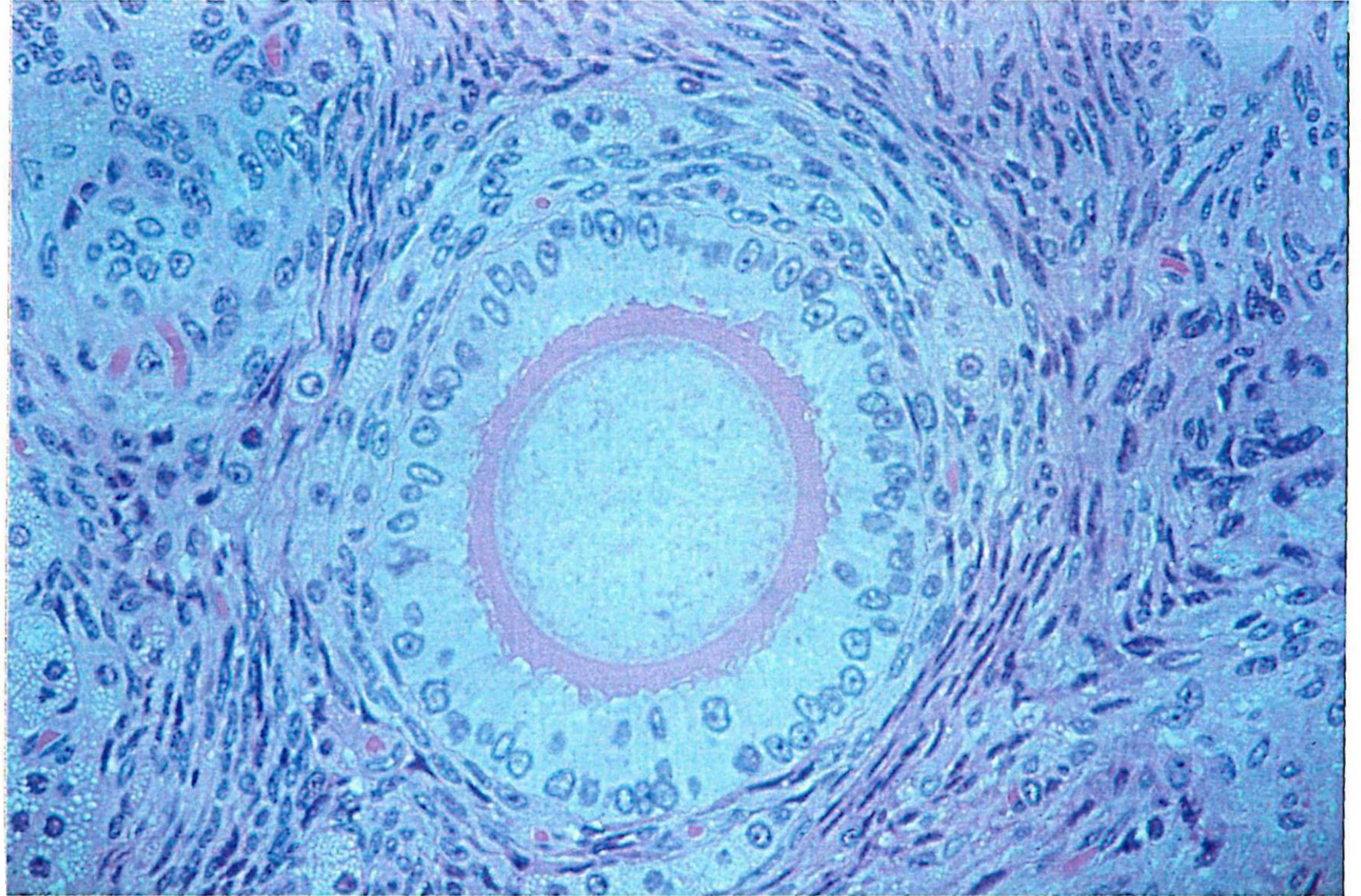
100 μ m
Cat Ovary

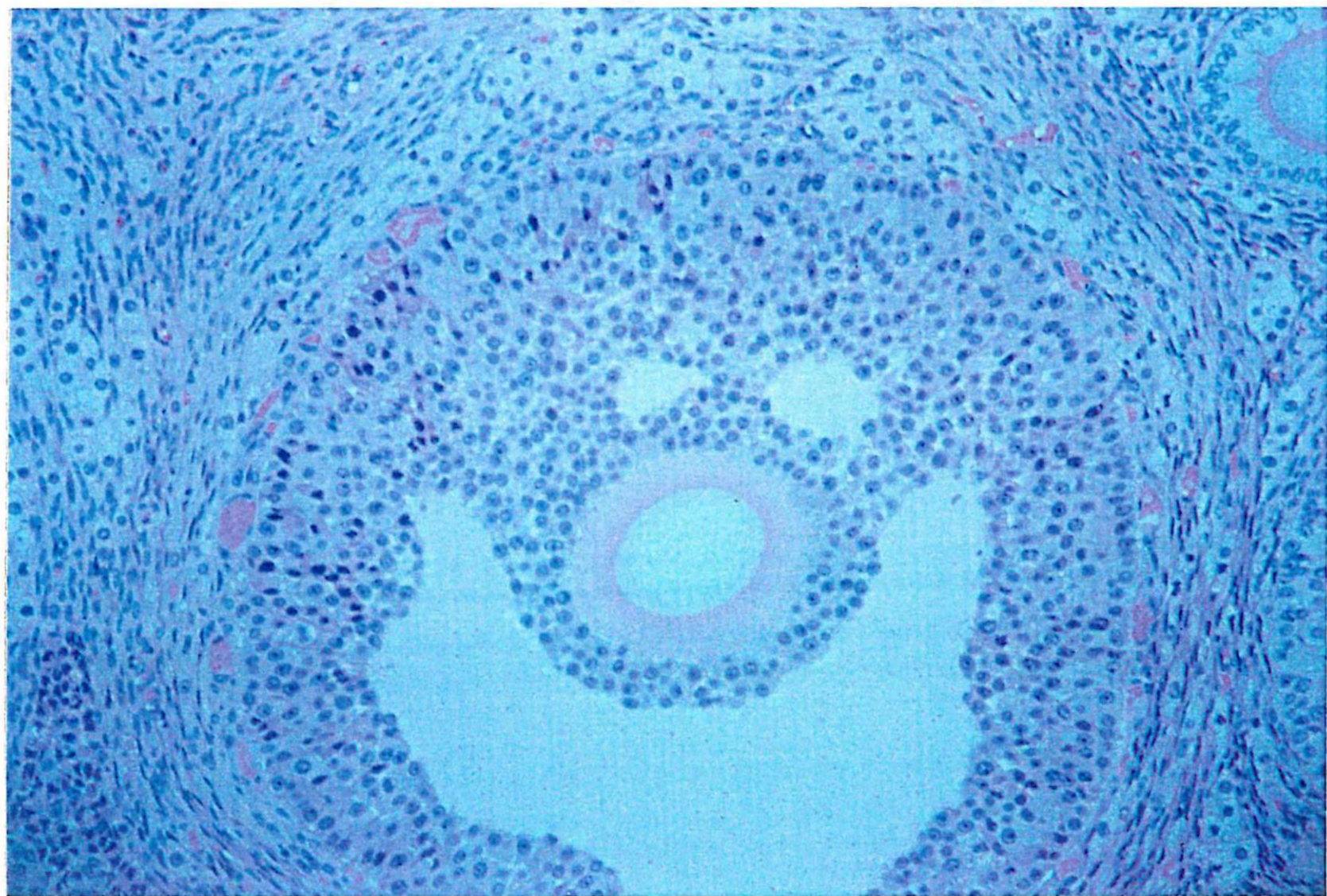


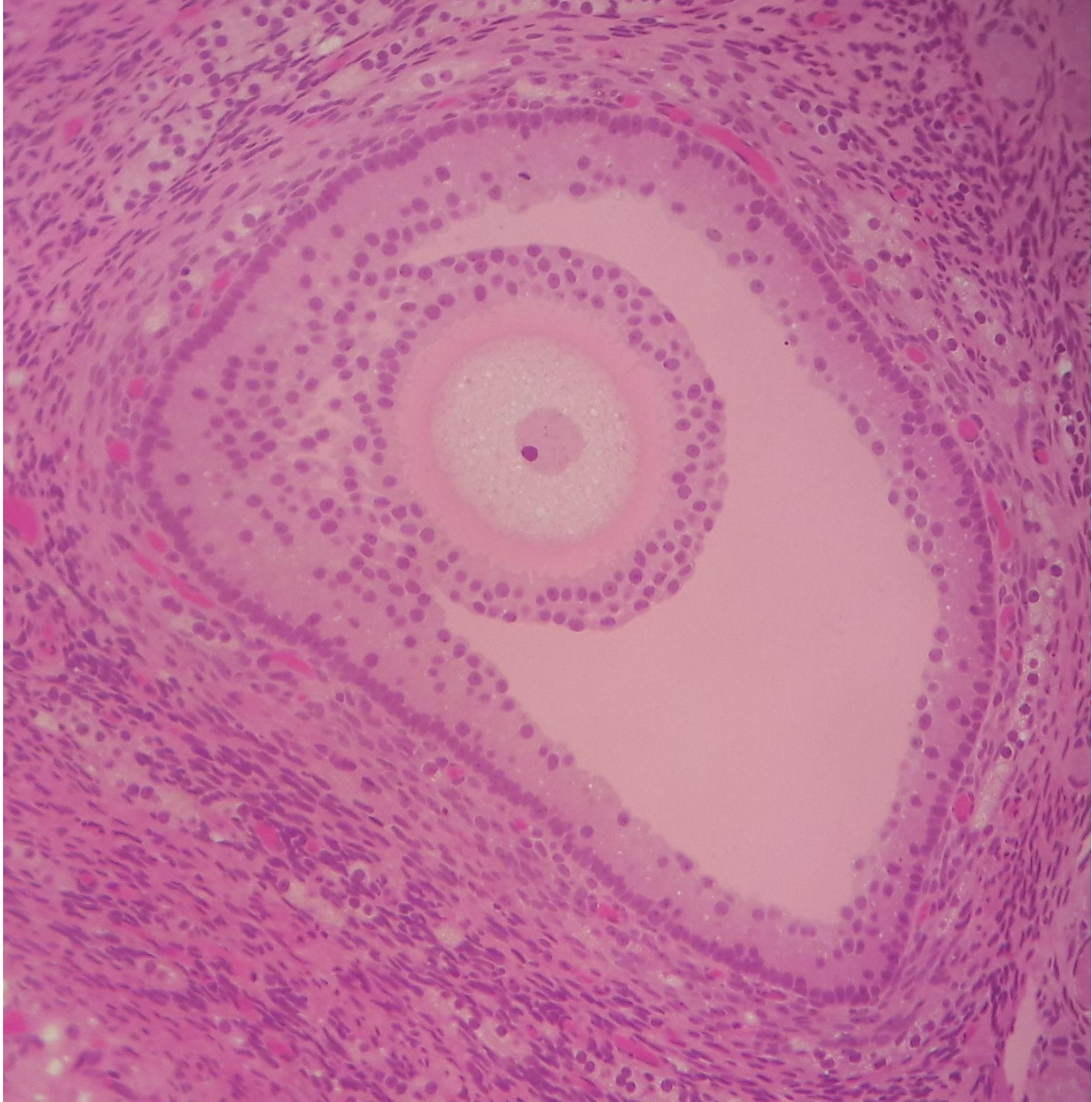
© M.A. Hill, 1999

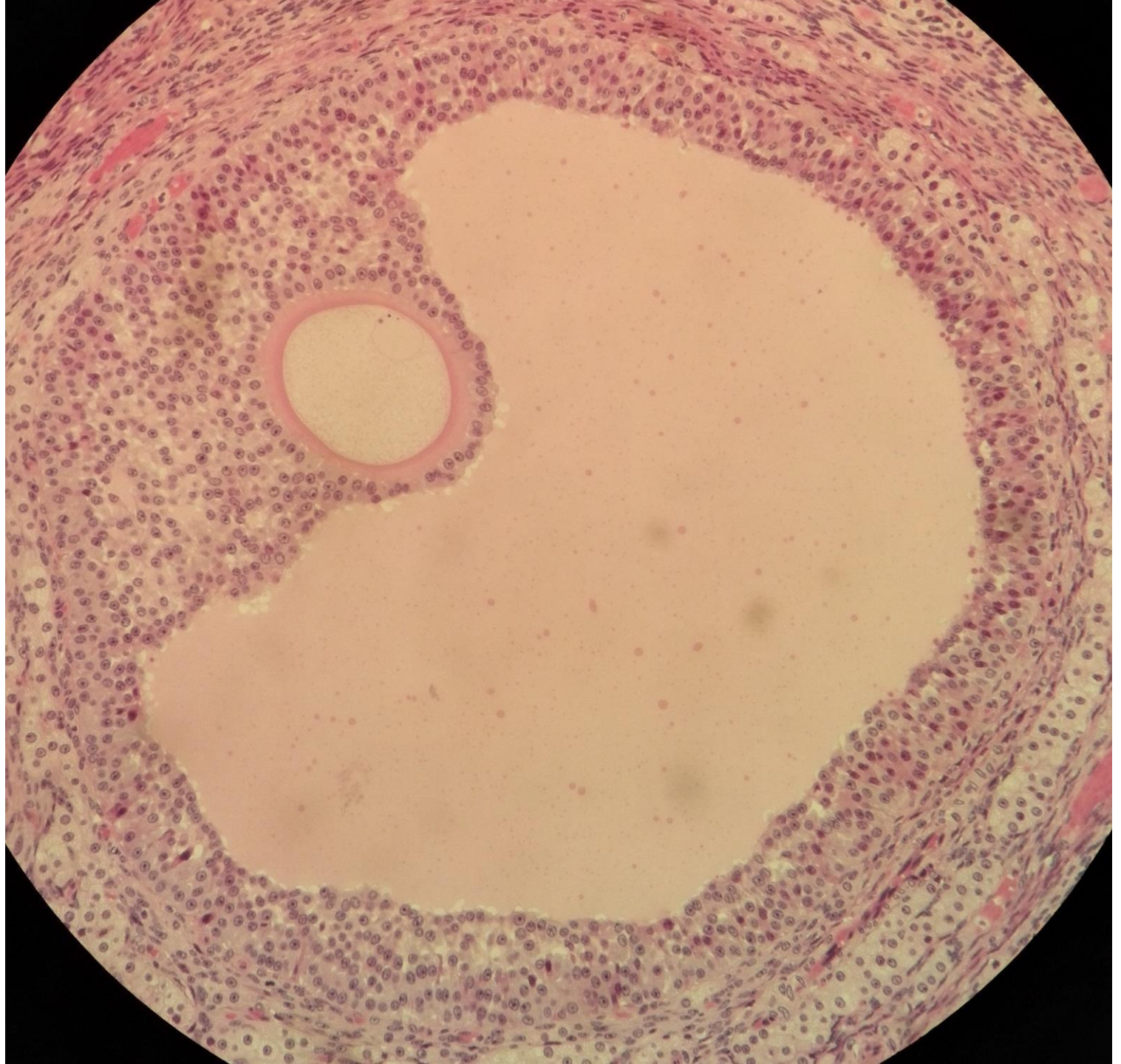


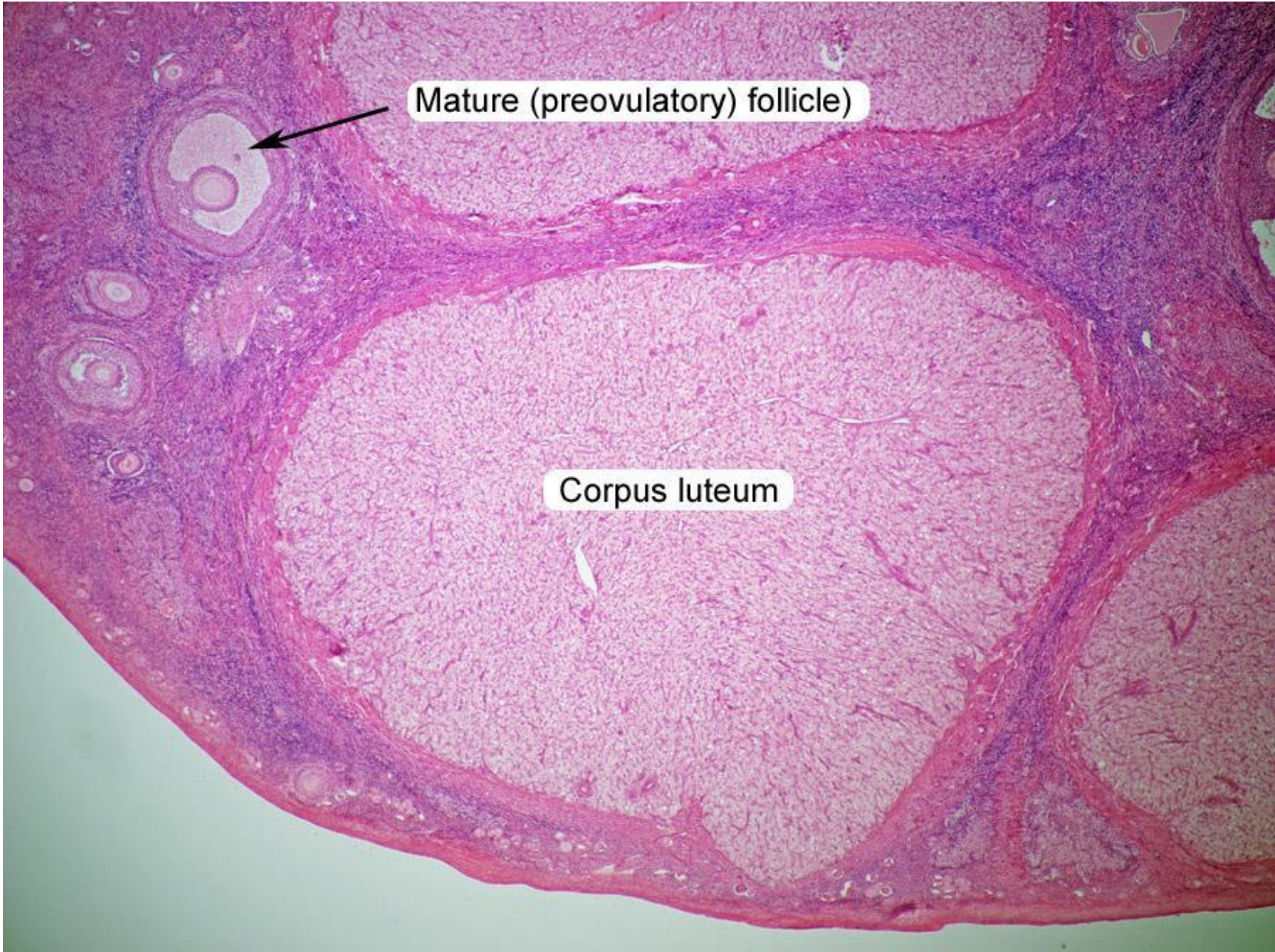






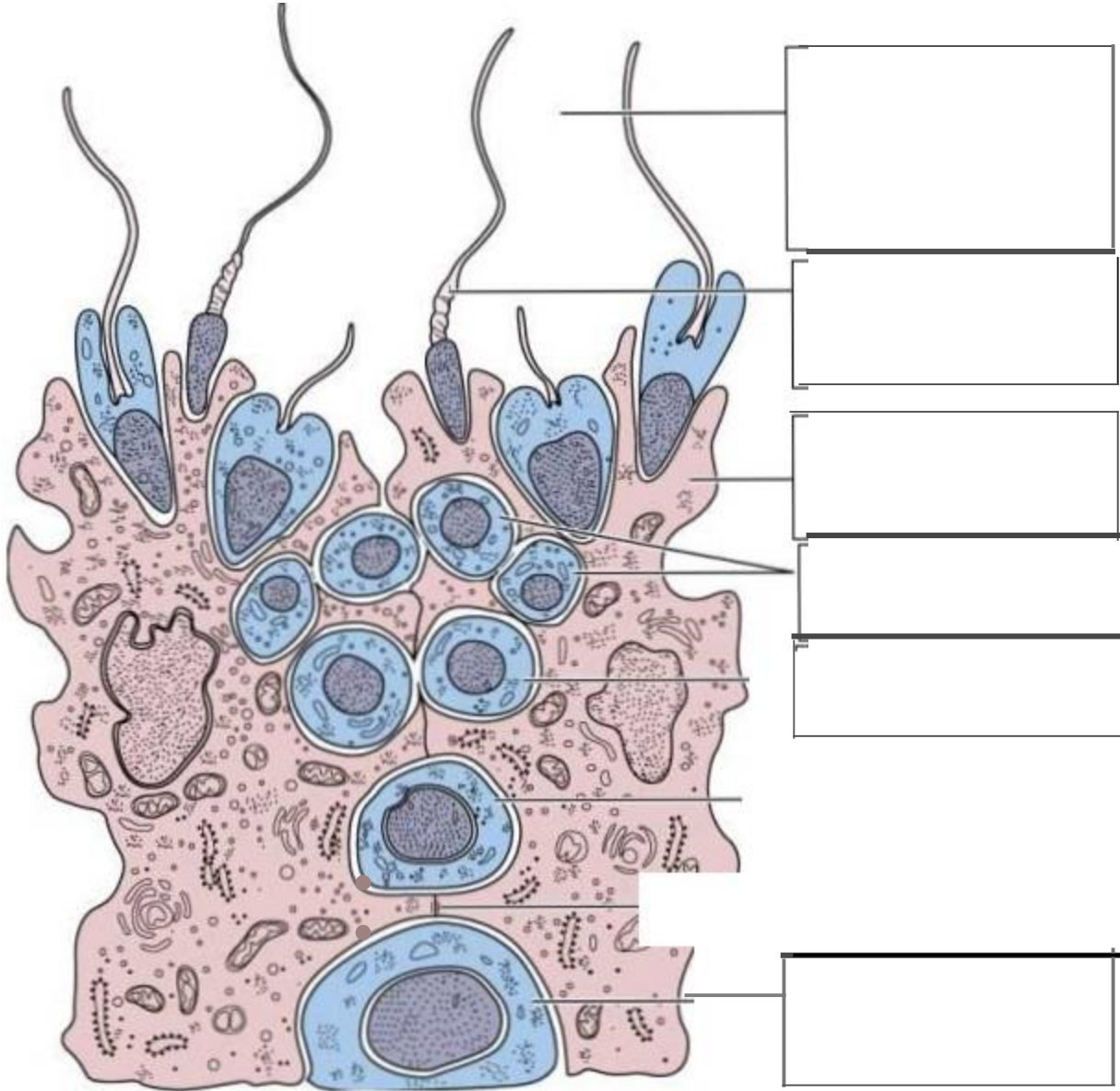






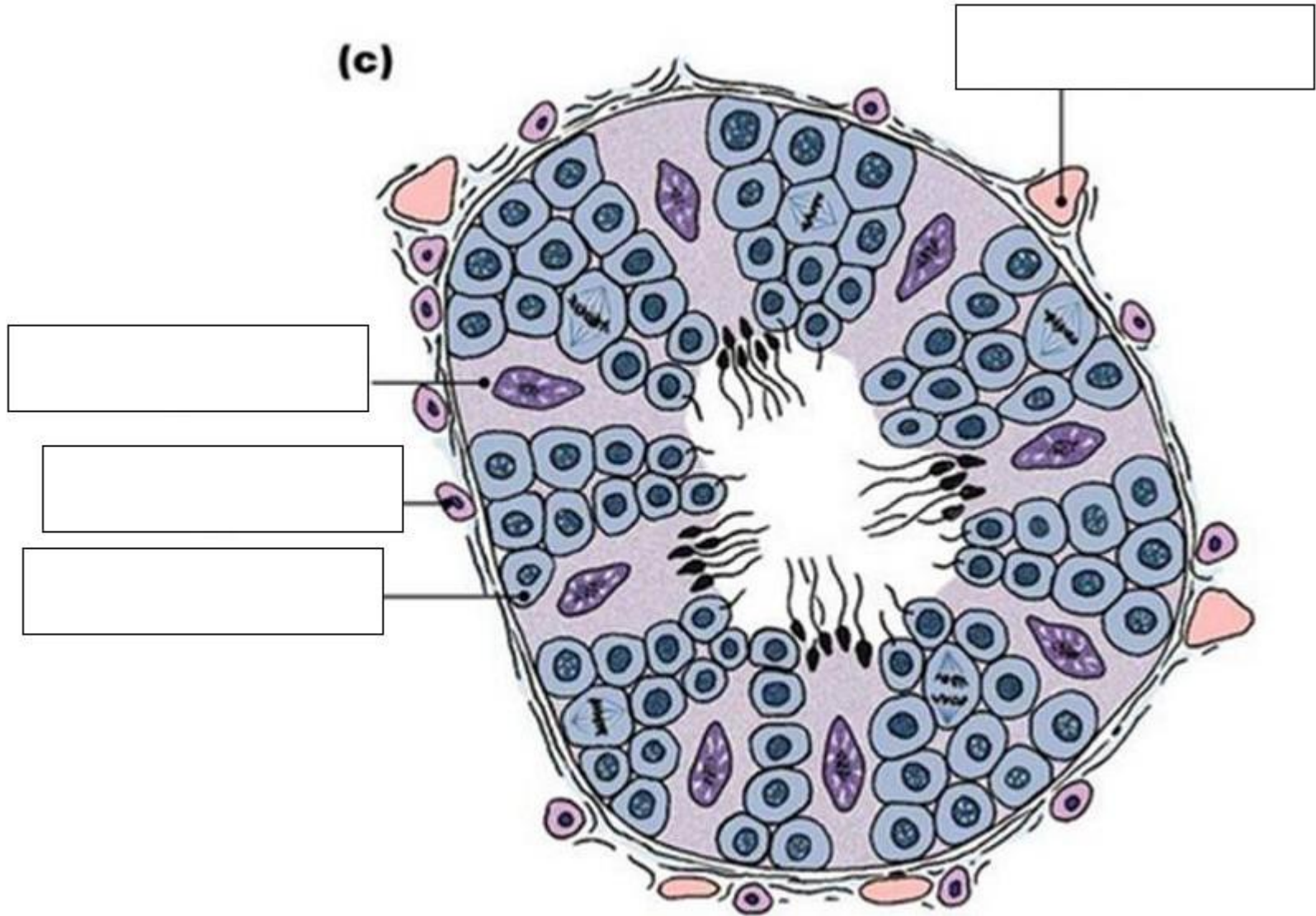
Mature (preovulatory) follicle

Corpus luteum



The Seminiferous Tubule

(c)

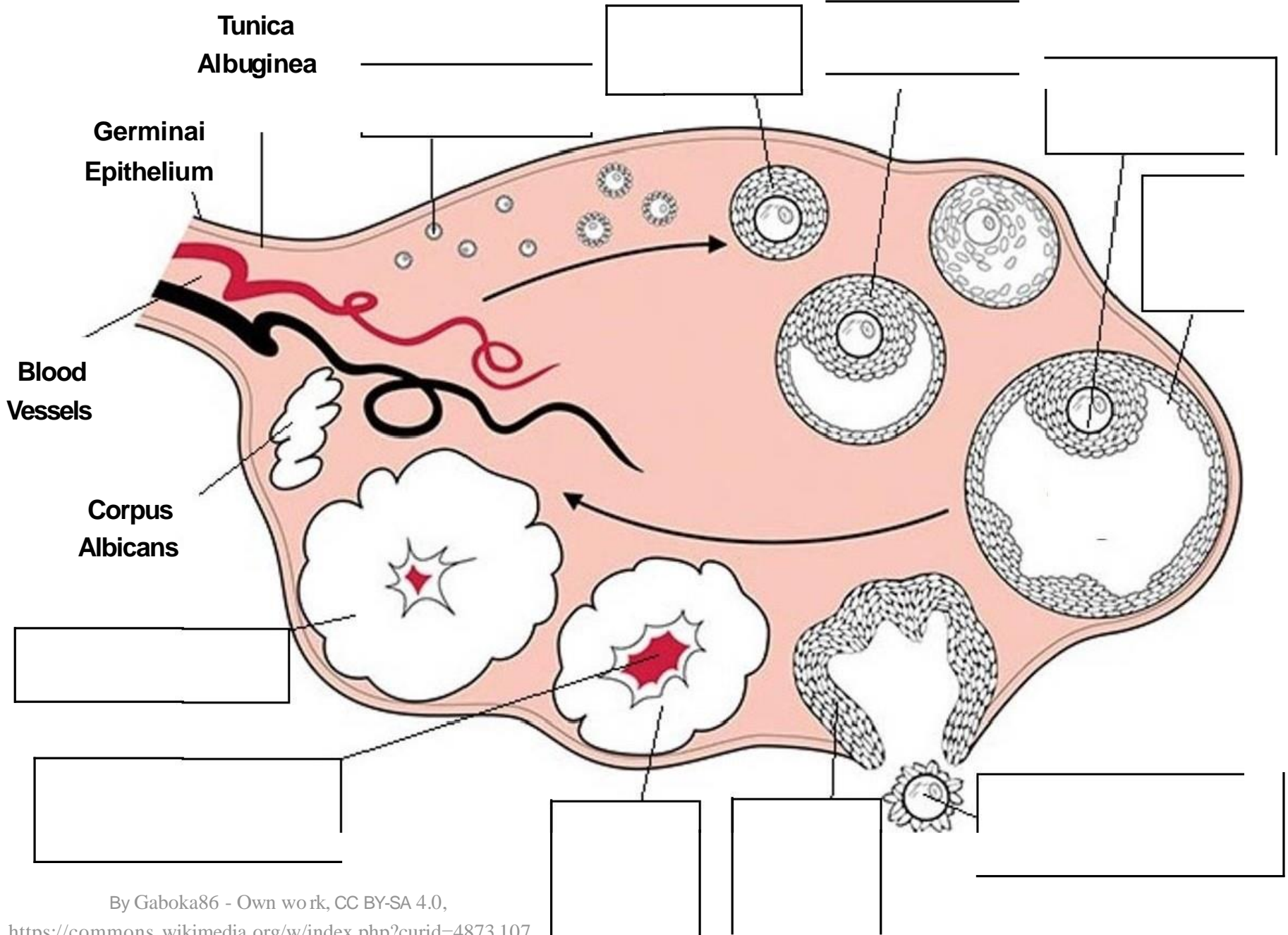


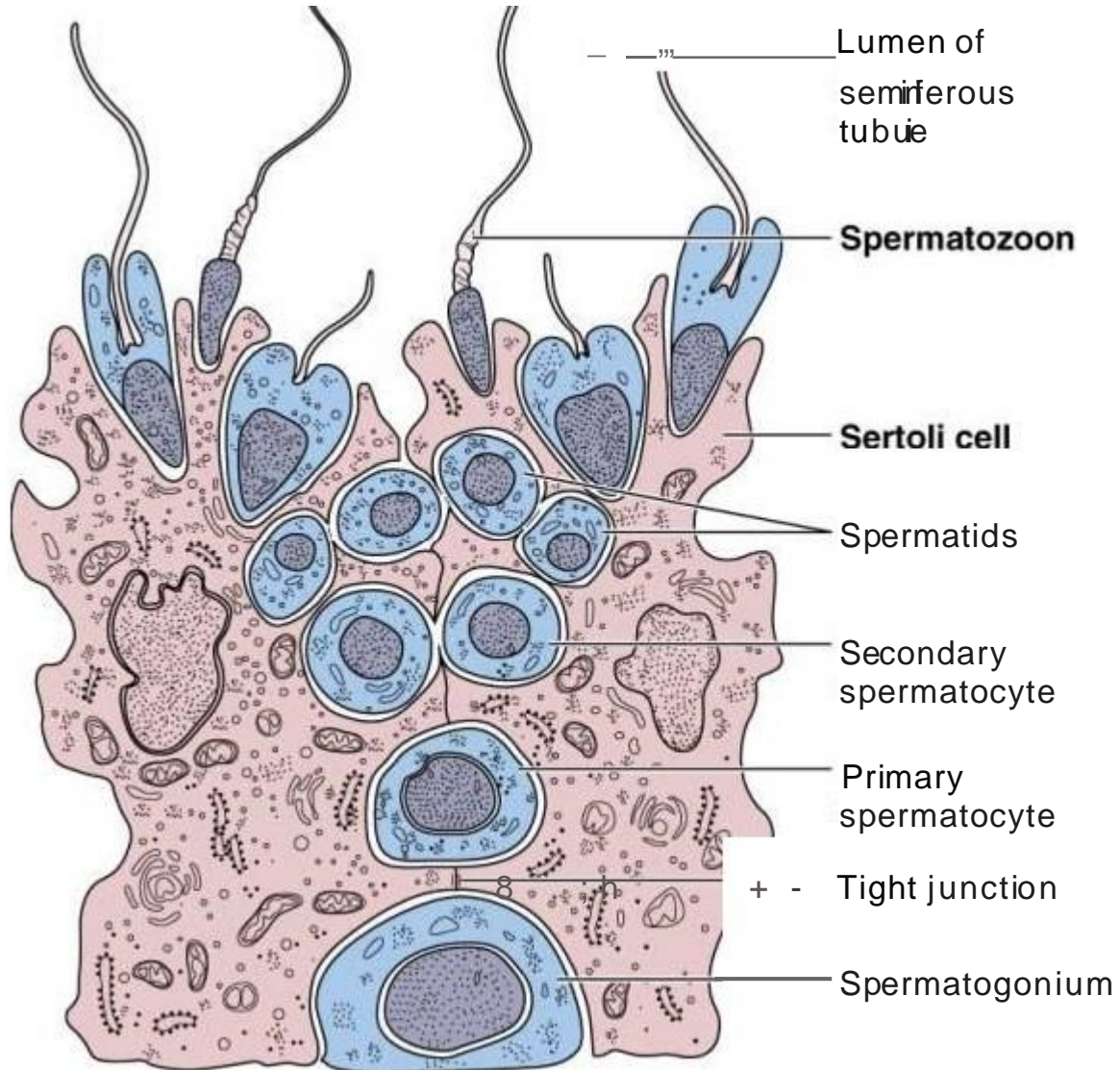
Tunica
Albuginea

Germinai
Epithelium

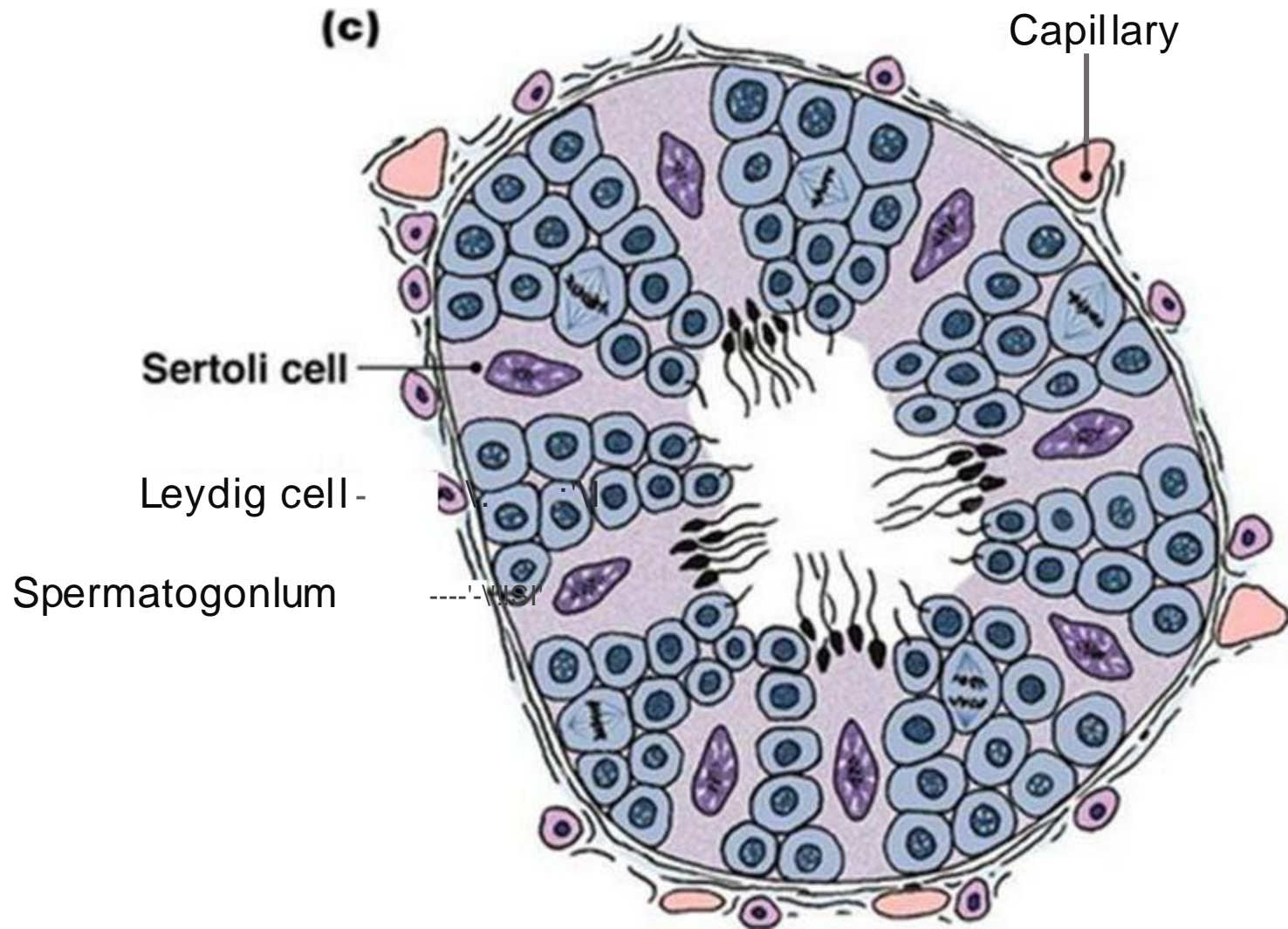
Blood
Vessels

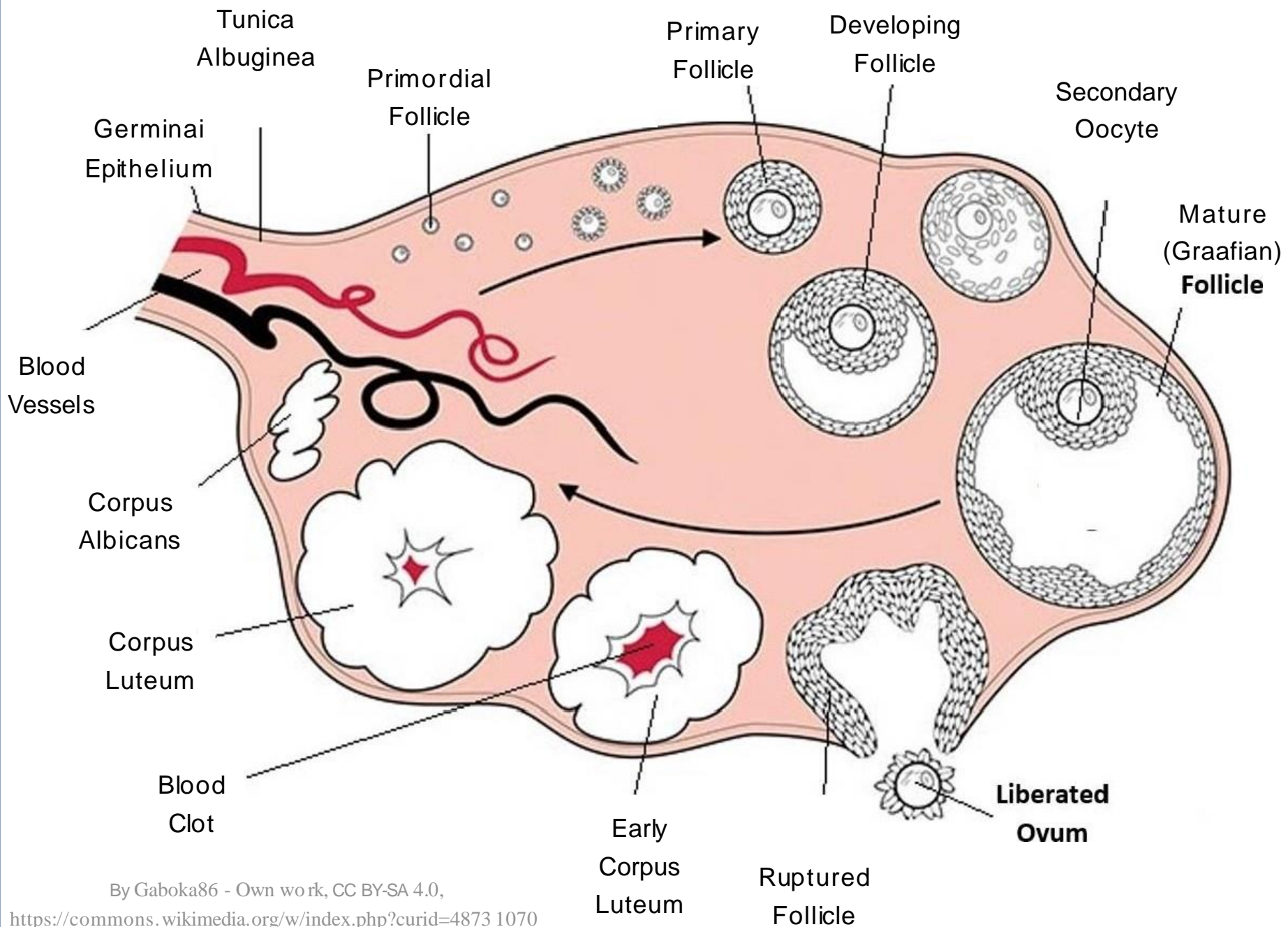
Corpus
Albicans





The Seminiferous Tubule





By Gaboka86 - Own work, CC BY-SA 4.0,

<https://commons.wikimedia.org/w/index.php?curid=48731070>