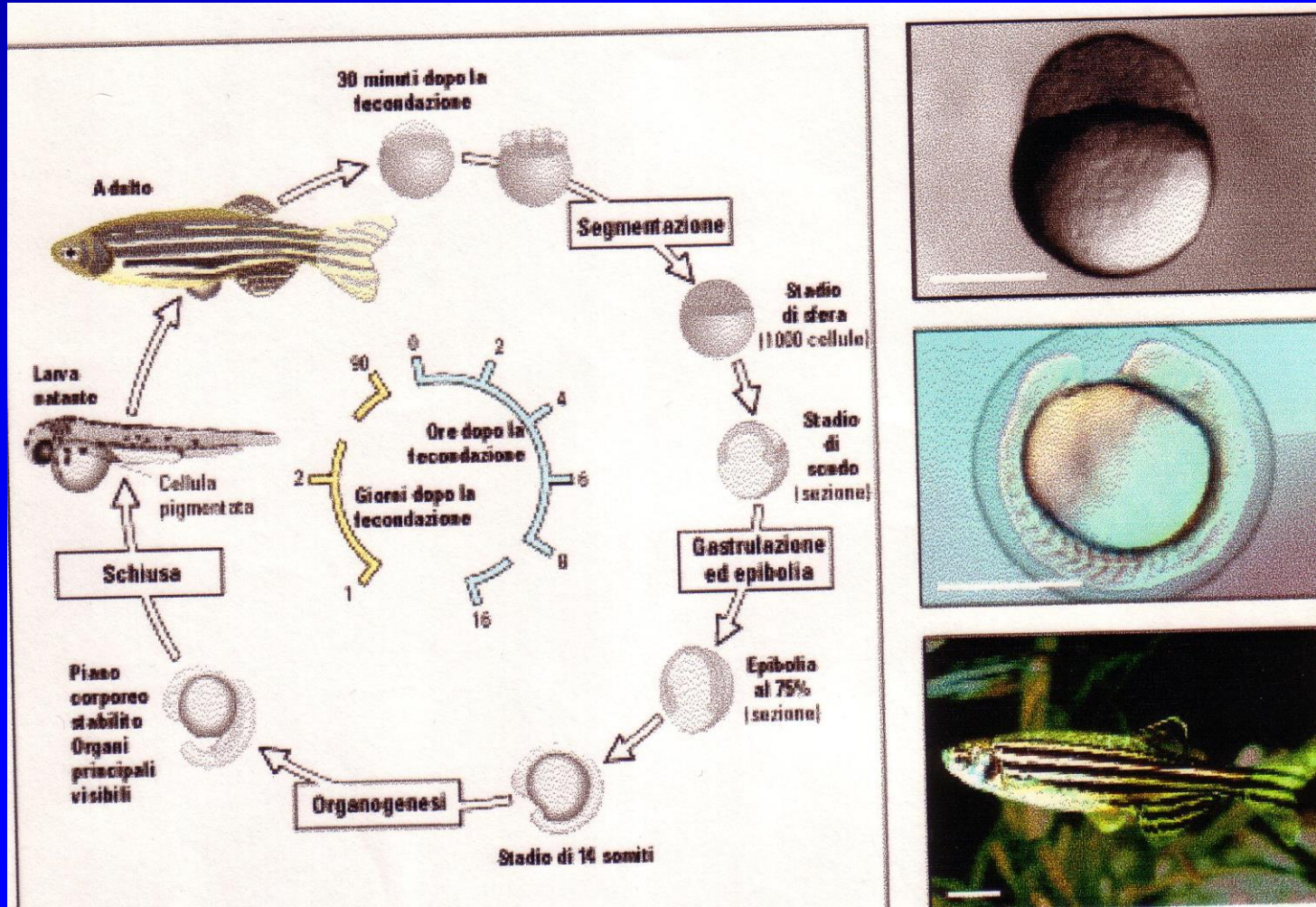
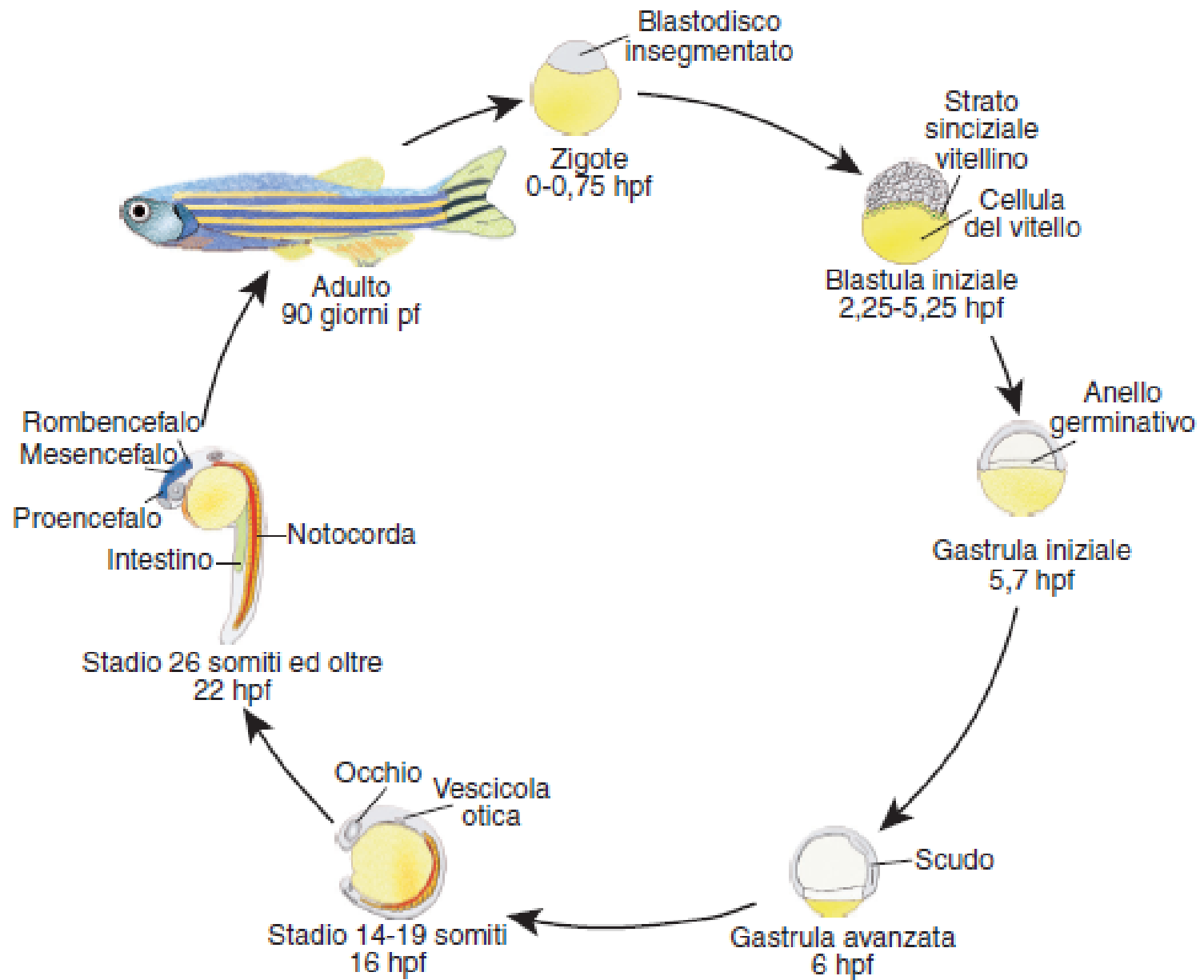


Sviluppo Pesci Teleostei

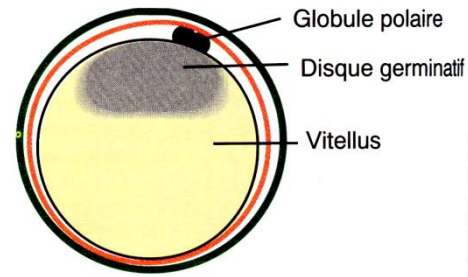
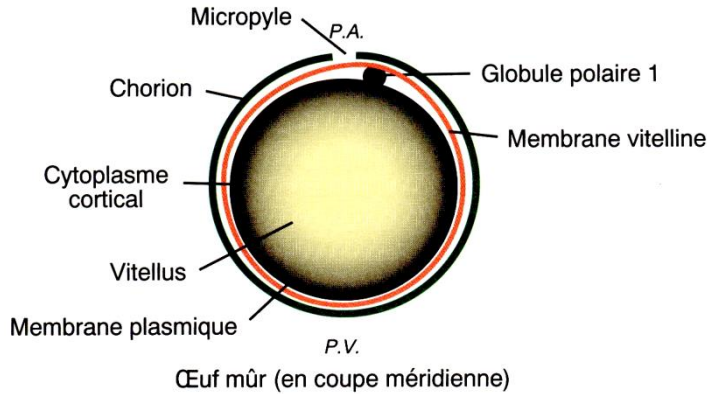
Dario rerio





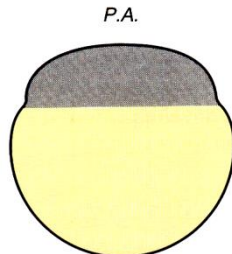
Premières étapes de la segmentation

a) L'œuf insegmenté

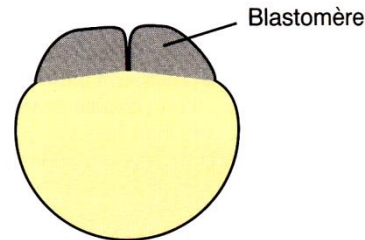


Œuf fécondé (en coupe méridienne)

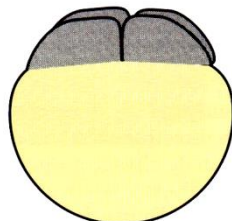
b) La segmentation : premiers stades (vues latérales externes)



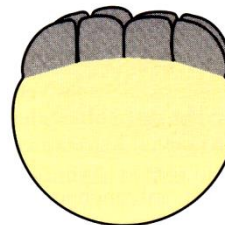
Stade 1 cellule



Stade 2 cellules



Stade 4 cellules



Stade 8 cellules

Uovo telolecitico

Segmentazione
meroblastica
discoidale

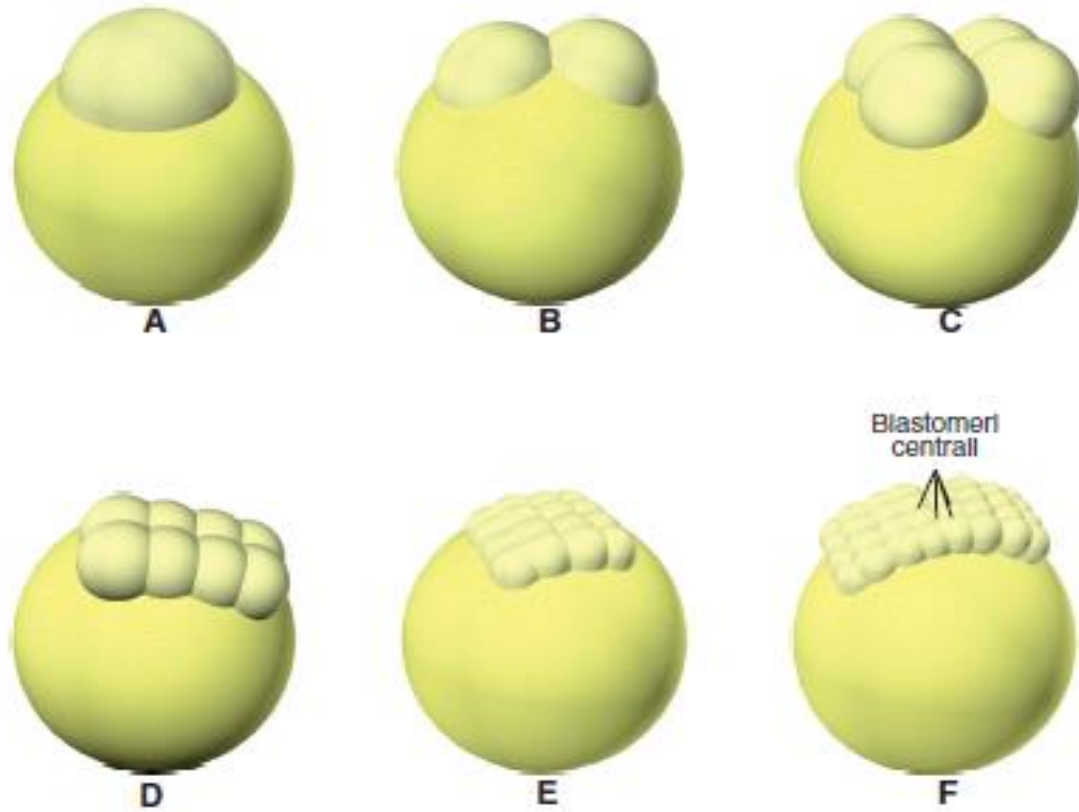


Figura 2

La segmentation (vues en coupes méridiennes)

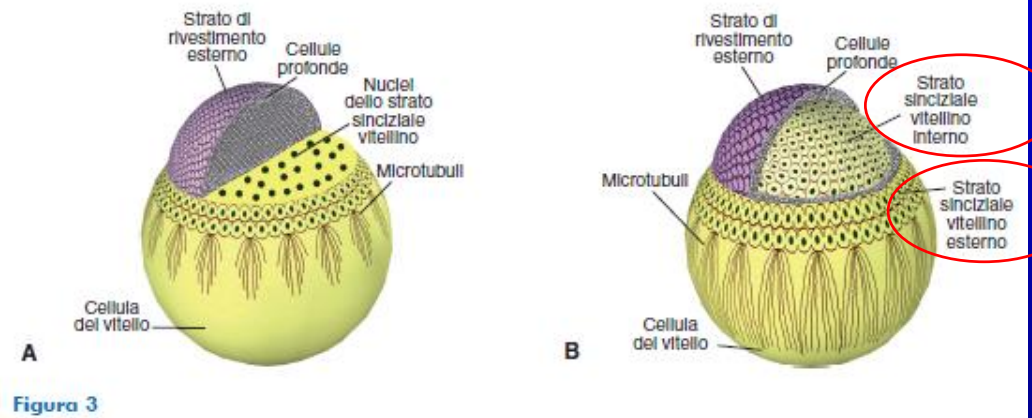
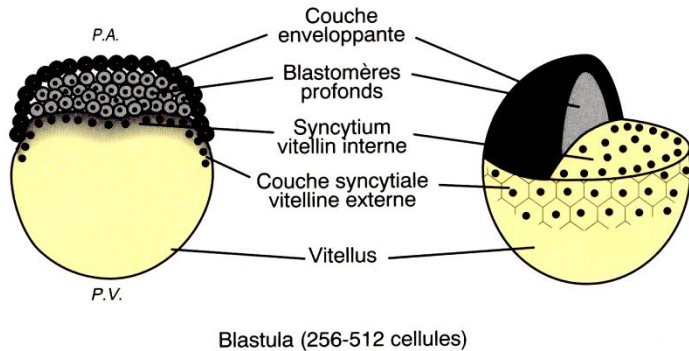
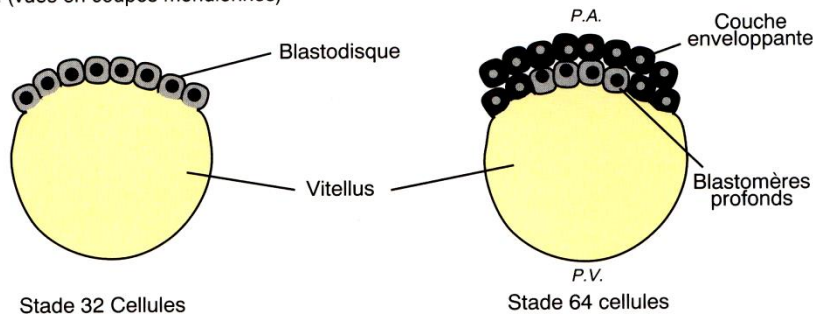
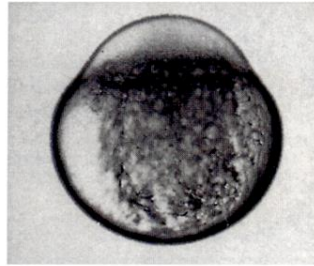
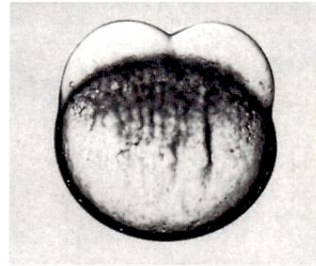


Figura 3

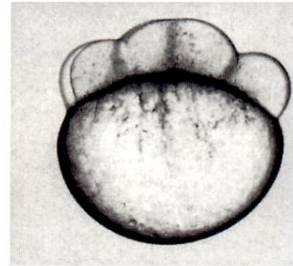
1. Rivestimento esterno- periderma
2. Blastomeri profondi- formano l'embrione
3. Sincizio vitellino



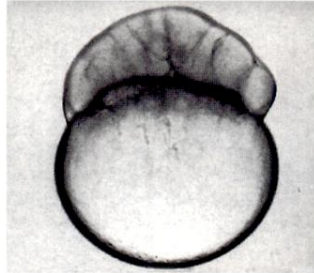
a) 1 cellule



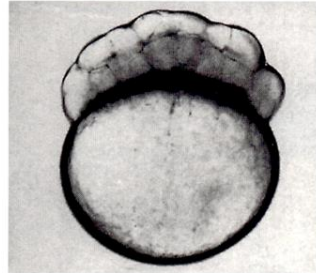
b) 2 cellules



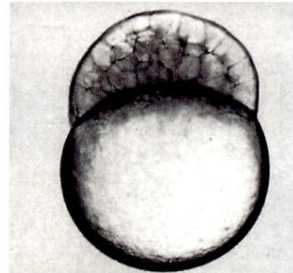
c) 8 cellules



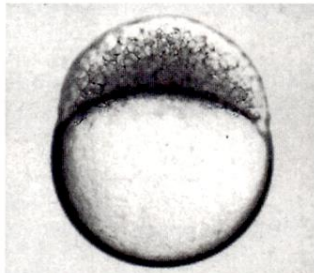
d) 32 cellules



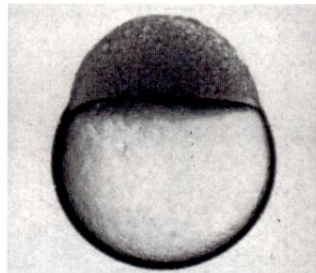
e) 64 cellules



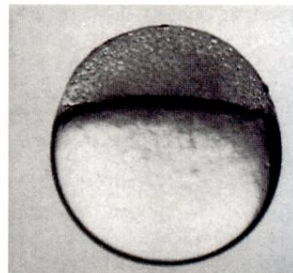
f) 128 cellules



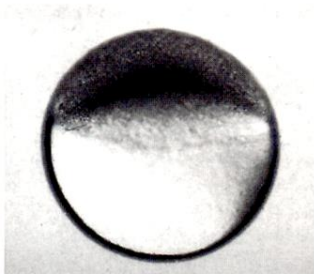
g) 1000 cellules



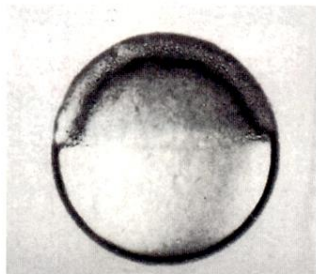
h) Blastula haute



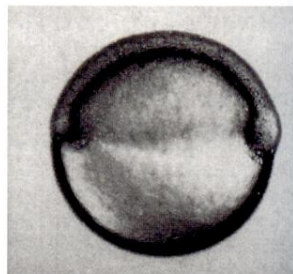
i) Sphère



j) Dôme



k) 50% épibolie

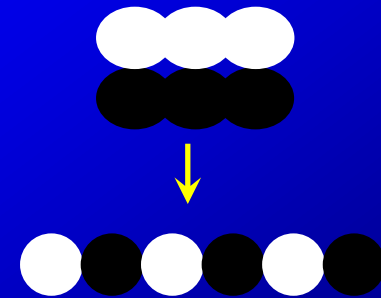


l) Écusson (de profil)

Sterroblastula

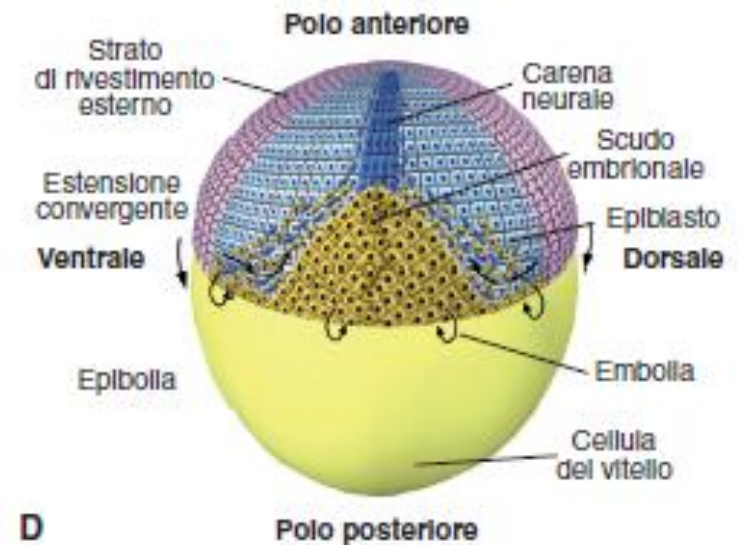
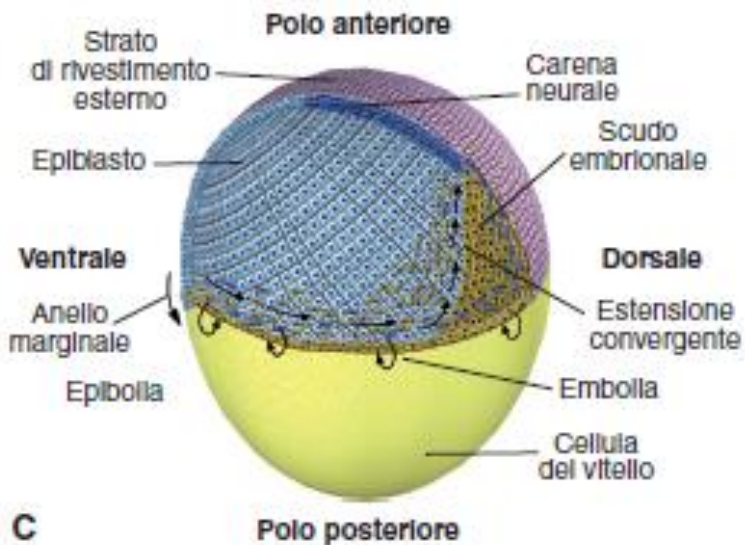
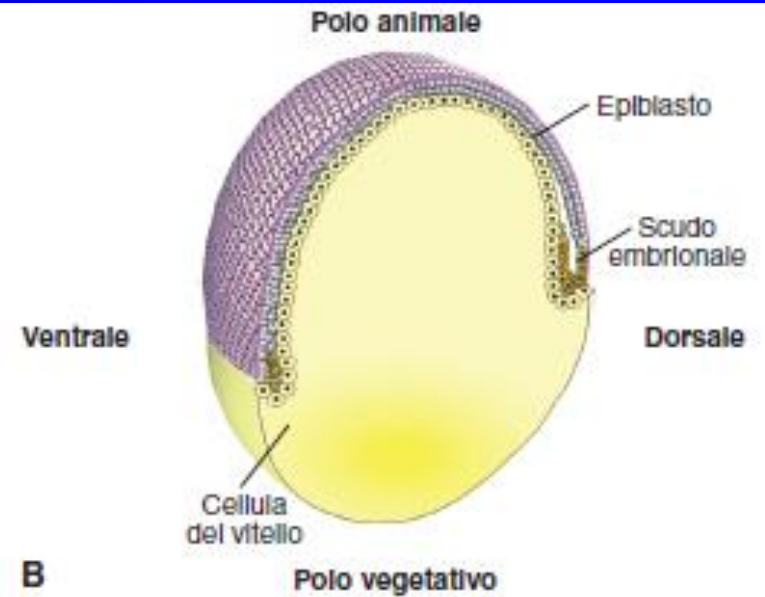
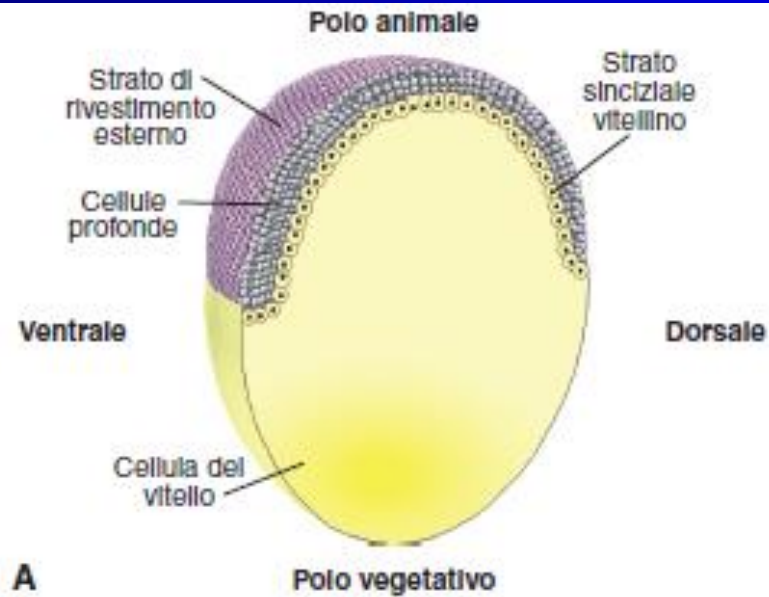
1. Blastula alta

2. Sfera (intercalazione radiale)

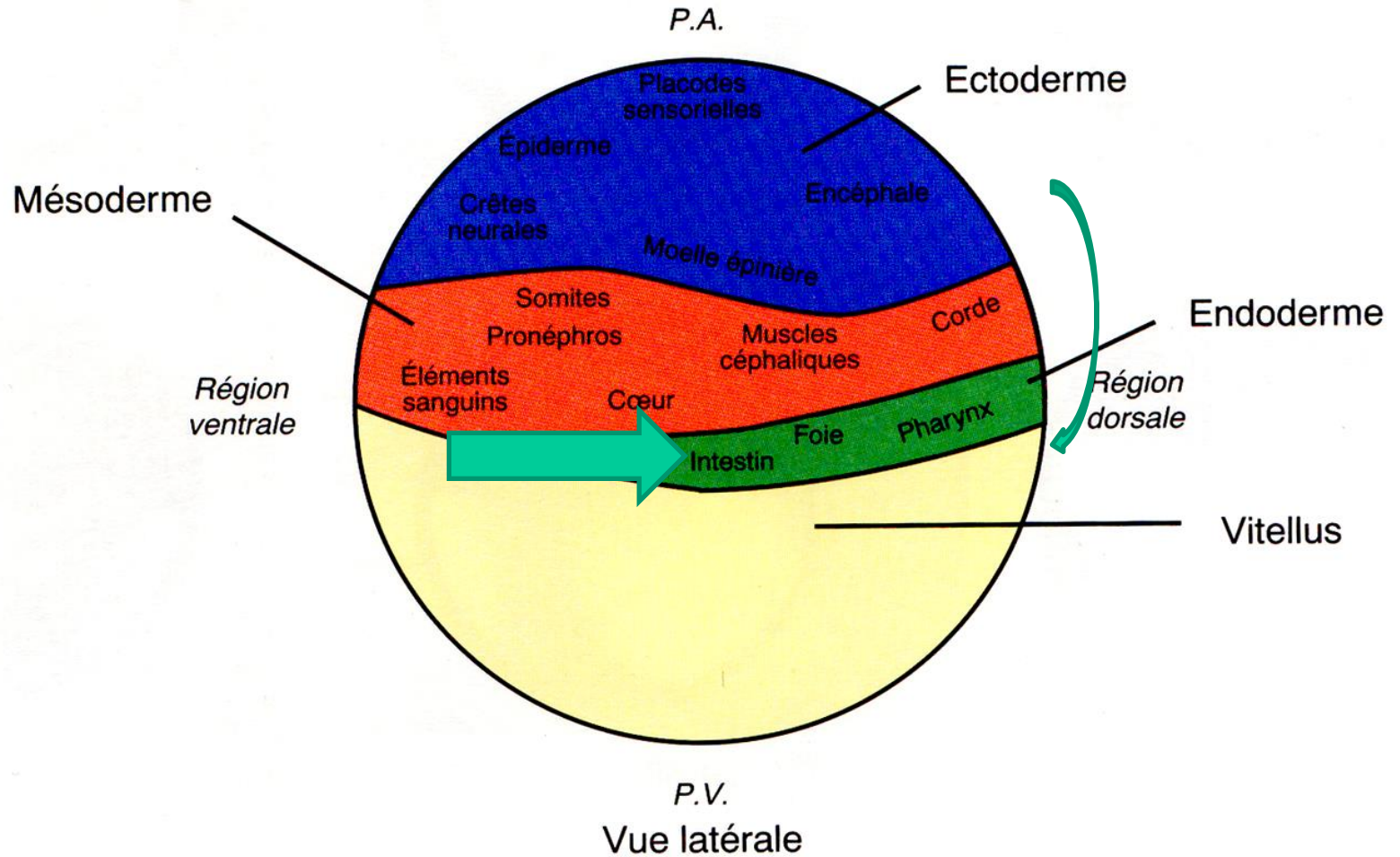


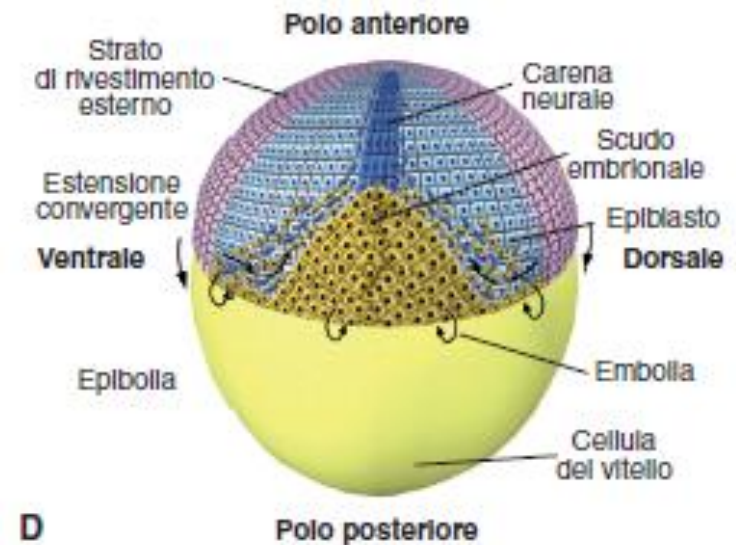
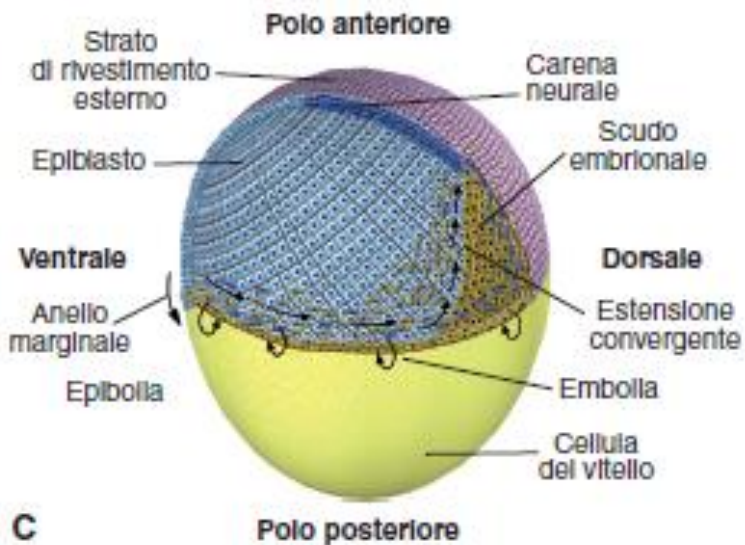
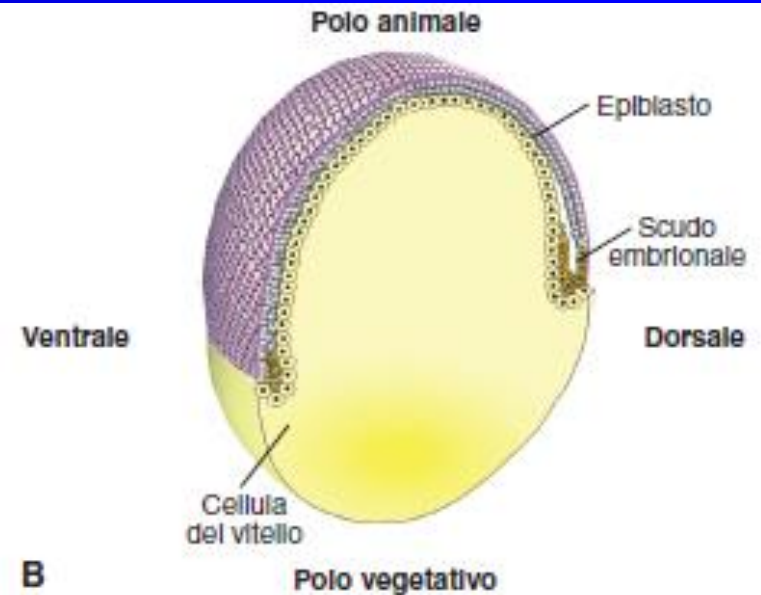
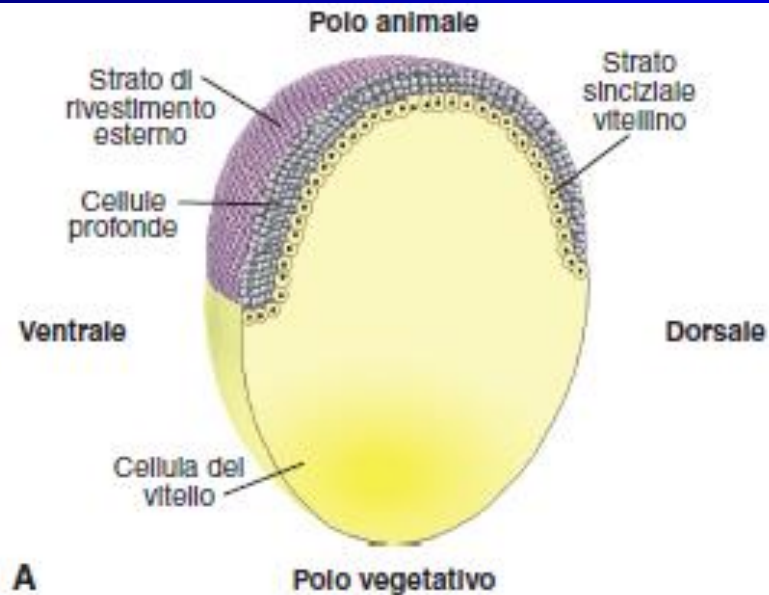
3. Cupola (30% epibolia)

4. 50% epibolia

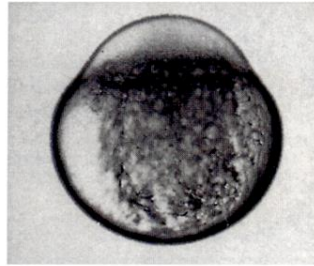


Carte des territoires présomptifs au stade 50% d'épibolie

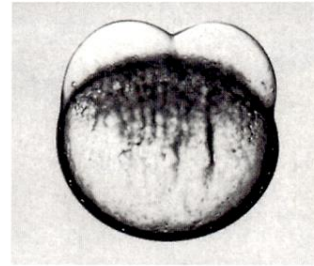




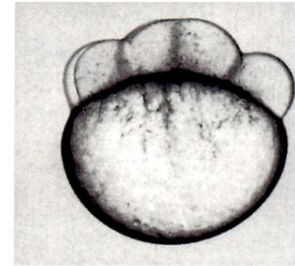
Microphotographies d'embryons de Danio rerio (x 50)



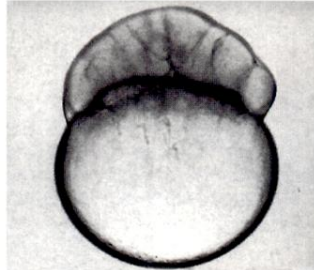
a) 1 cellule



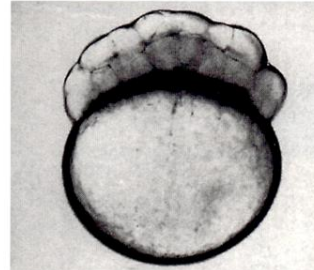
b) 2 cellules



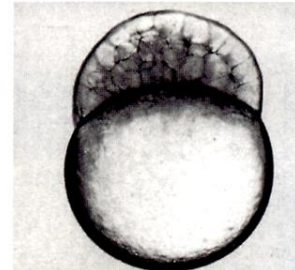
c) 8 cellules



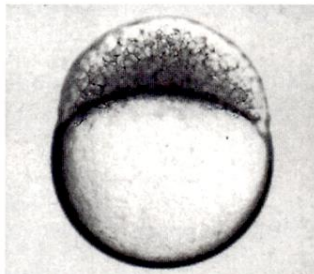
d) 32 cellules



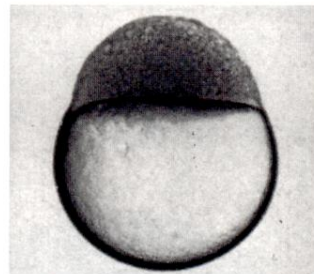
e) 64 cellules



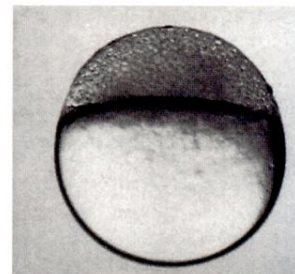
f) 128 cellules



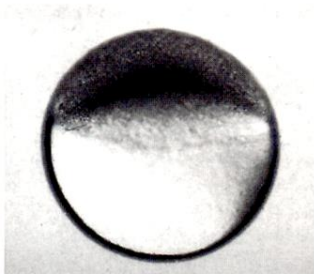
g) 1000 cellules



h) Blastula haute



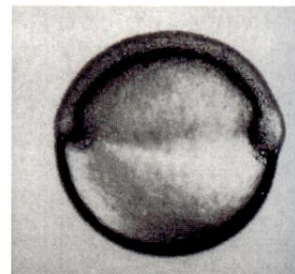
i) Sphère



j) Dôme

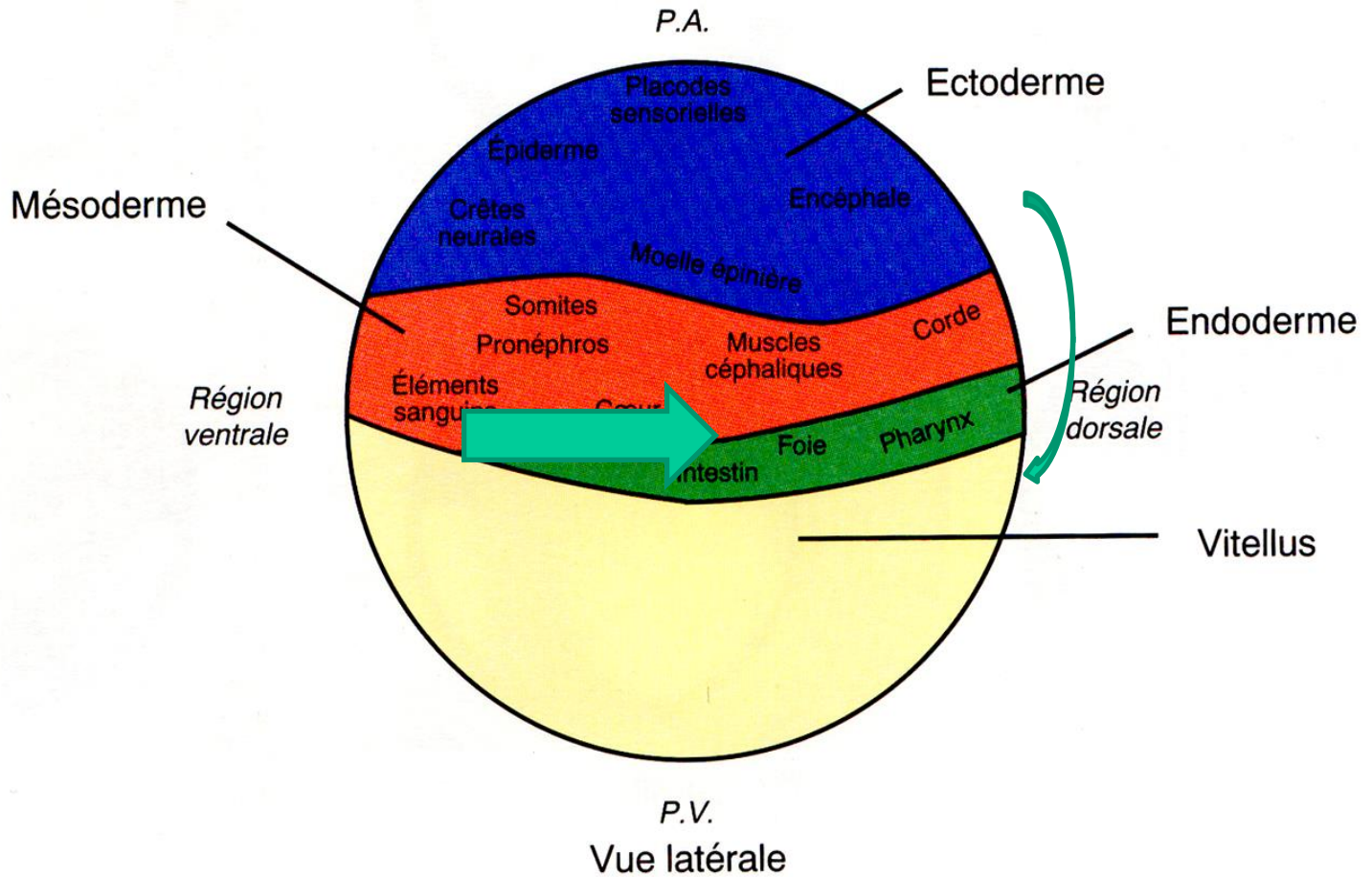


k) 50% épibolie



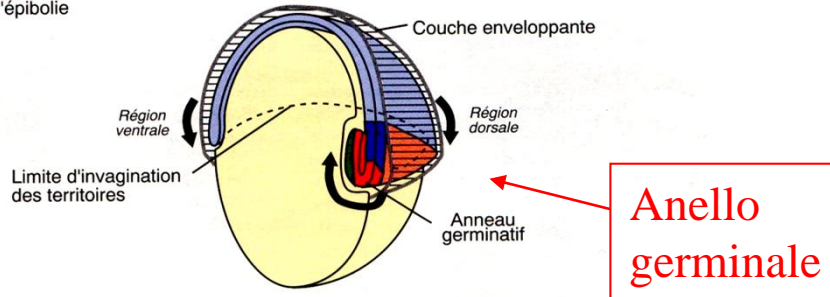
l) Écusson (de profil)

Carte des territoires présomptifs au stade 50% d'épibolie



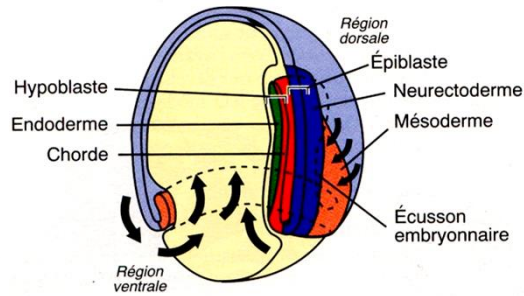
Gastrulazione

a) Embryon à 50% d'épibolie

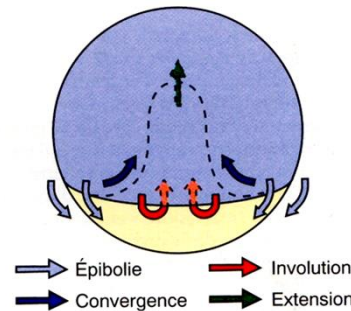


Anello germinale

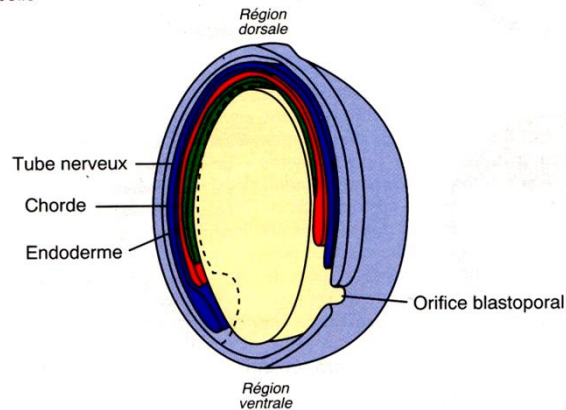
b) Embryon à 75% d'épibolie (sans la couche enveloppante)



c) Embryon à 75% d'épibolie : mouvements des territoires en vue externe dorsale



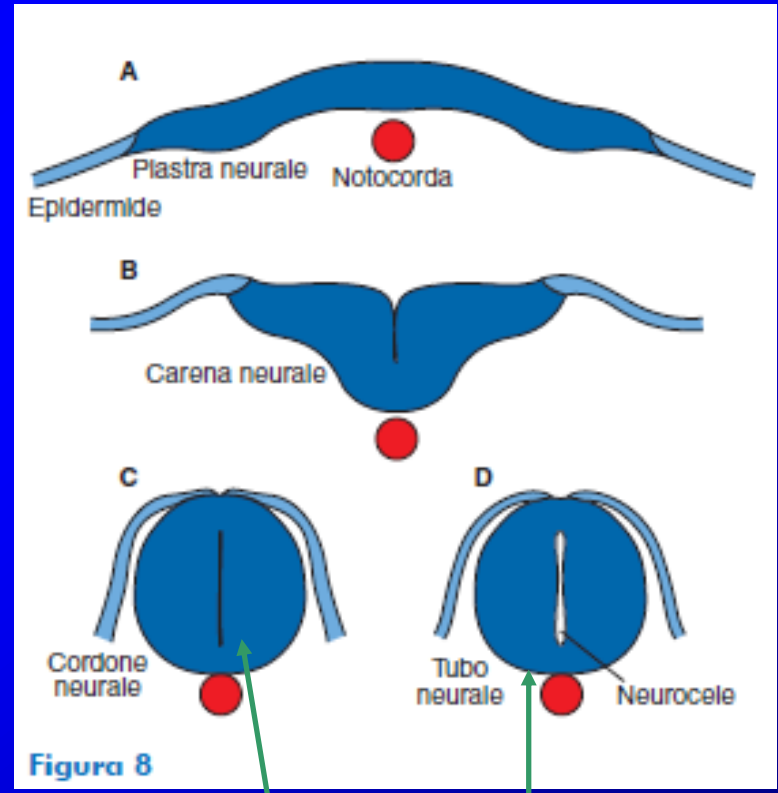
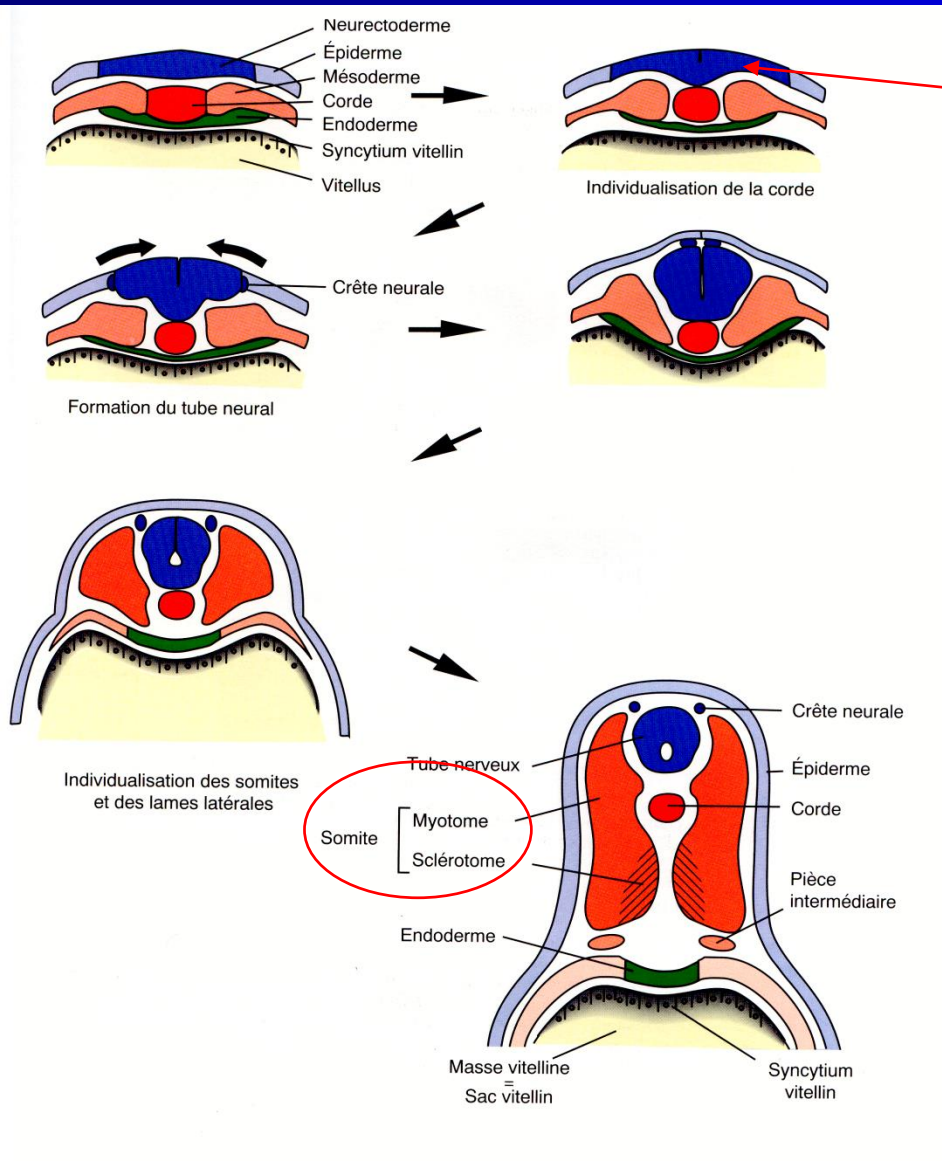
d) Embryon à 100% d'épibolie



Strato esterno= periderma
 Epiblasto= ectoderma
 Ipoblasto= mesoderma
 endoderma

1. Convergenza
2. Involuzione
3. Epibolia
4. Estensione

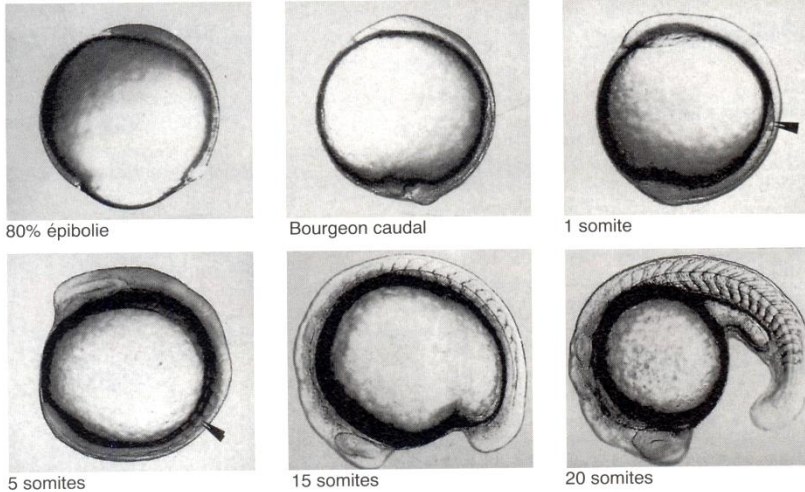
Carenatura neurale



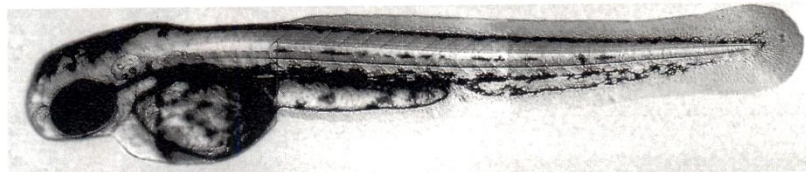
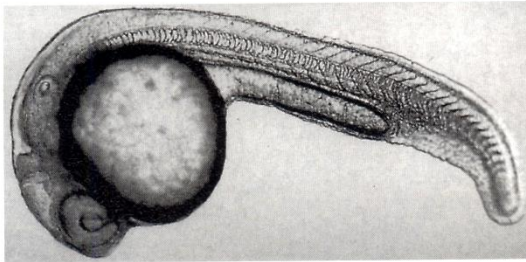
Tubo chiuso

Tubo cavo

a) Formation du jeune bourgeon caudal et somitogénèse

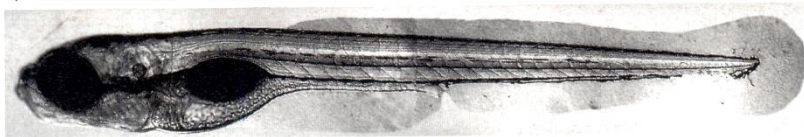


b) Redressement du bourgeon caudal

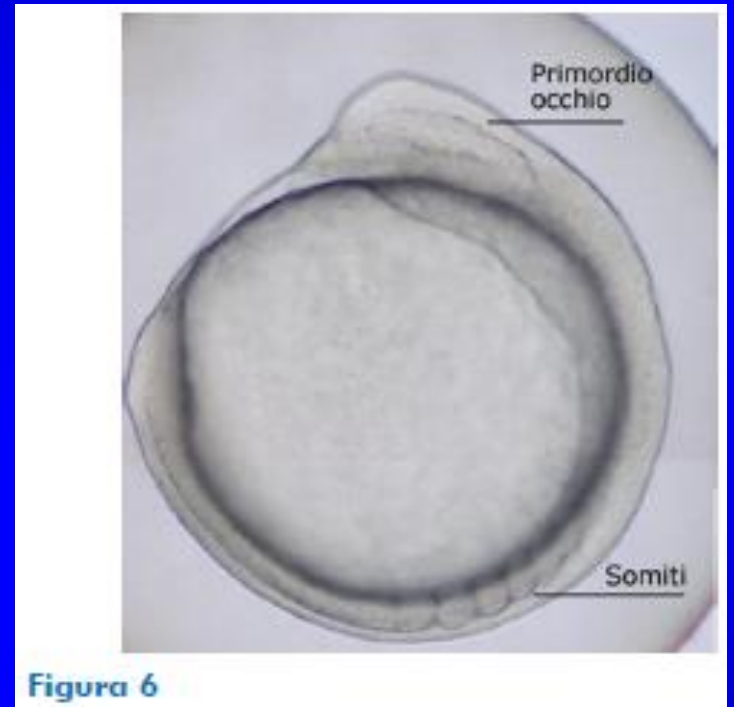


Bourgeon caudal âgé

c) Formation de la larve nageuse



(d'après Boulekbache, 1998)



Teleosteo – sacco del tuorlo

