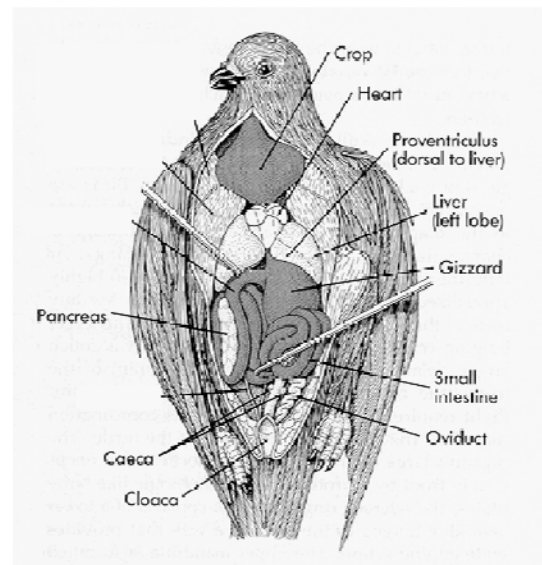
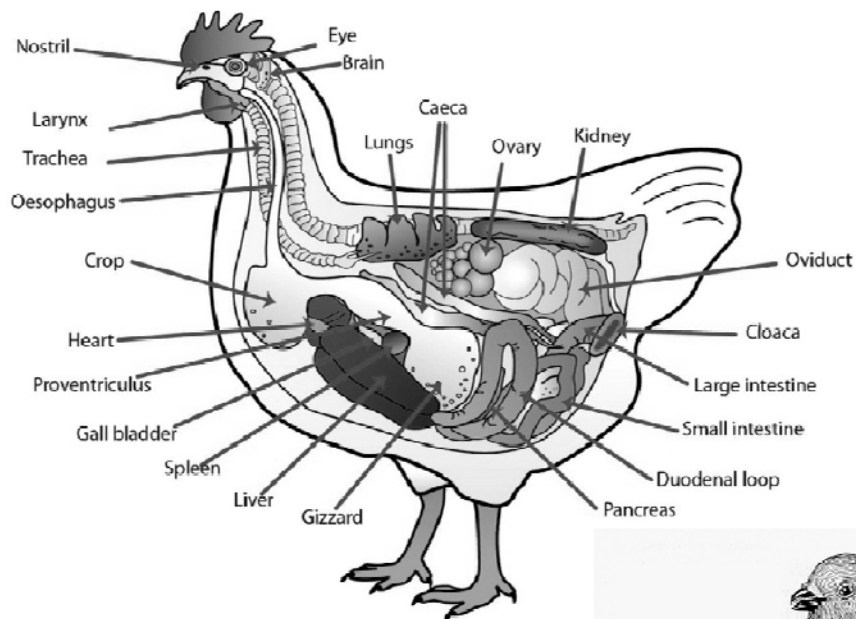


Uccelli

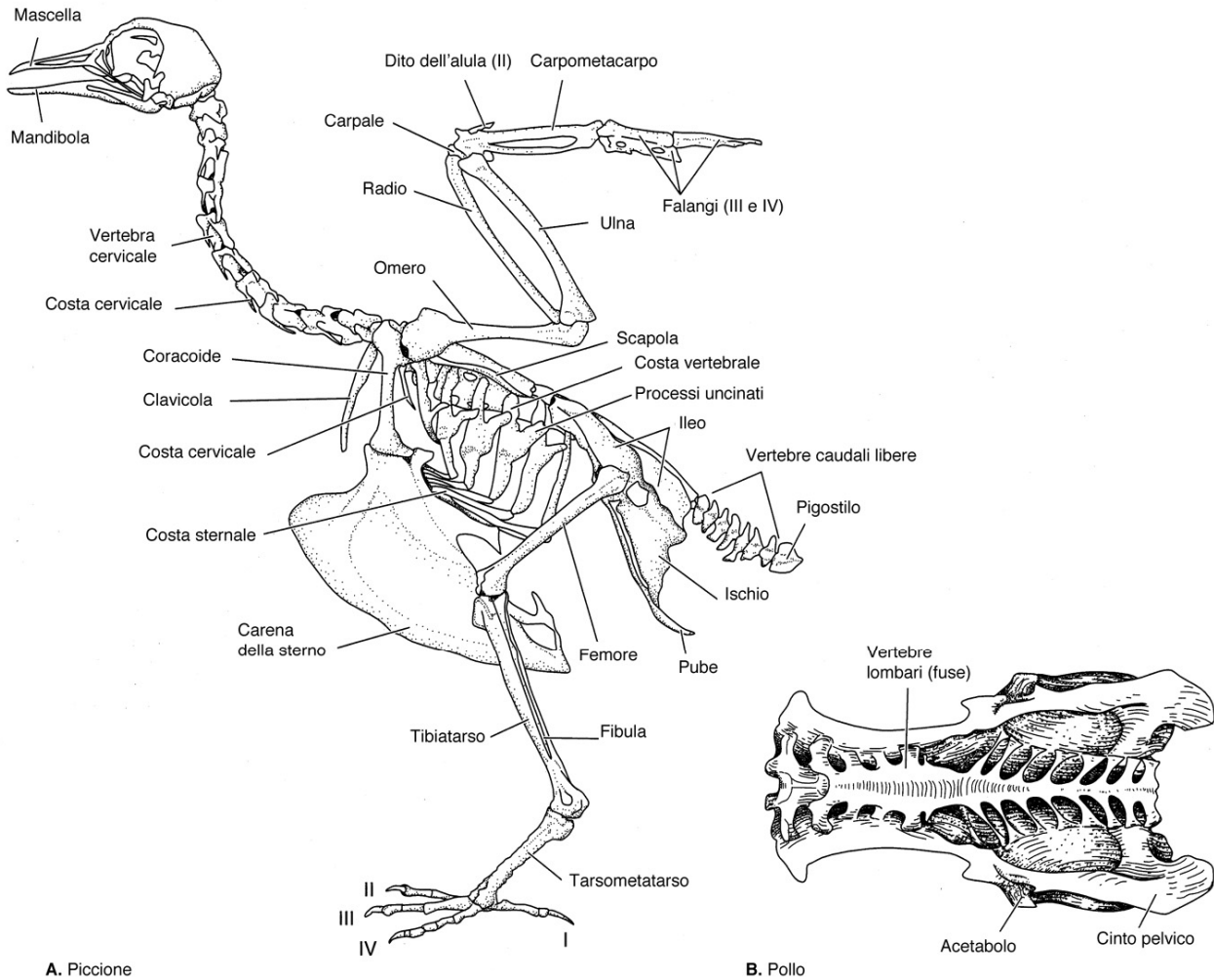
-

Guida alla dissezione

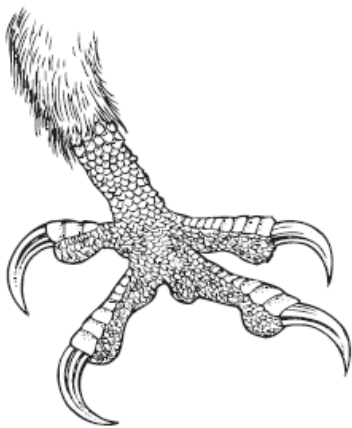


Corso di Anatomia Comparata

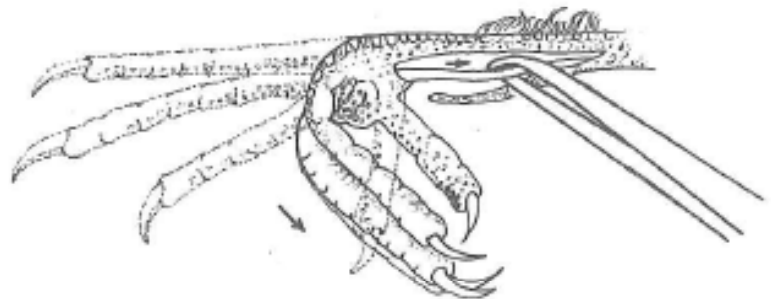
scheletro di un piccione



arto posteriore

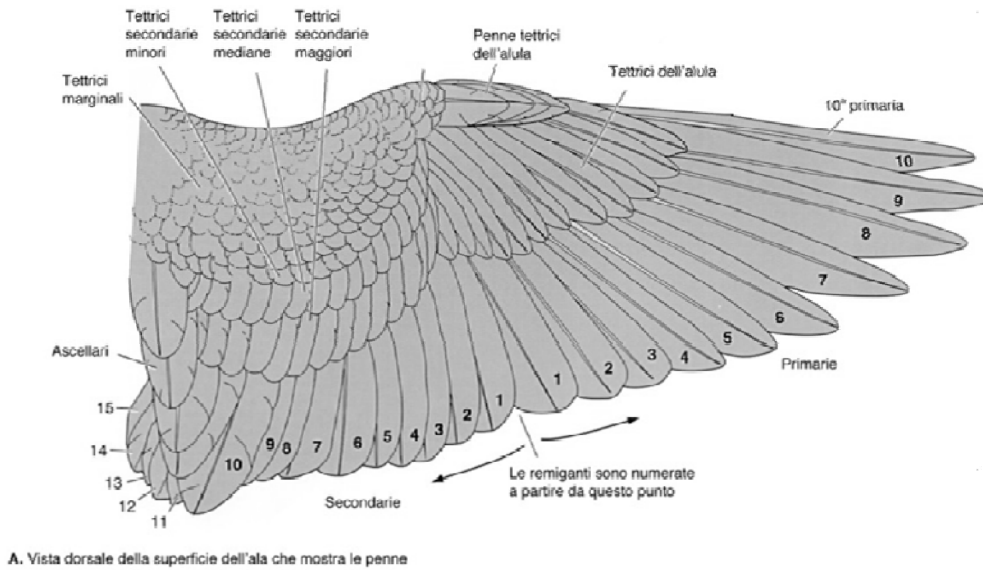


squame cornee e artigli

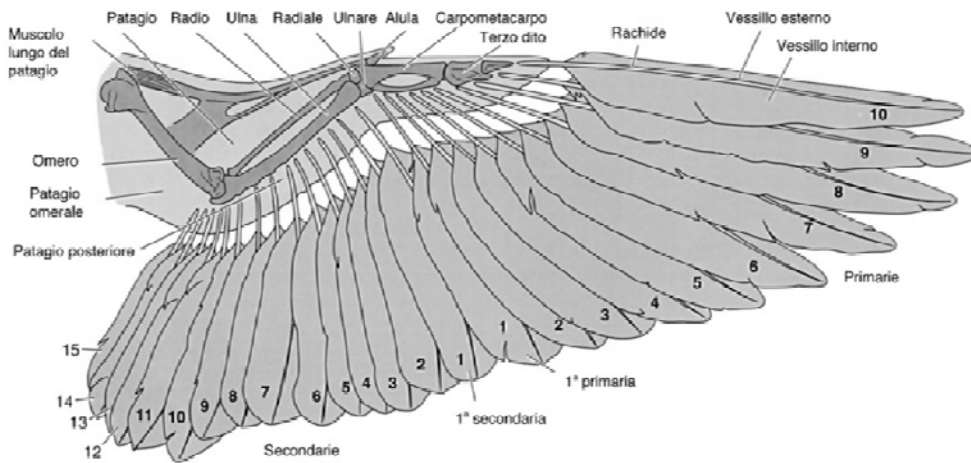


tendini

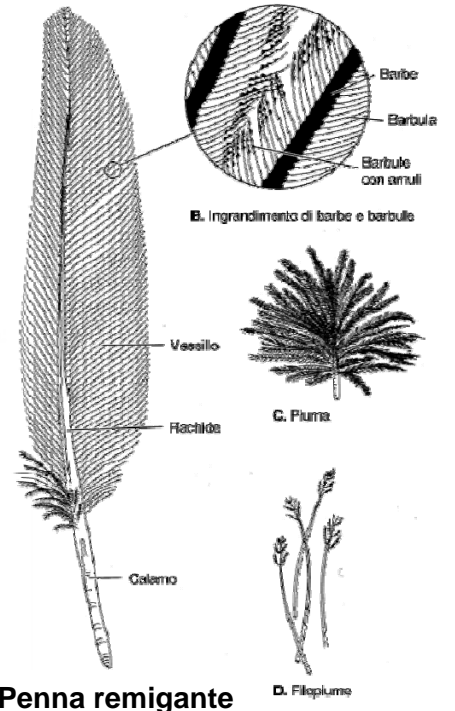
ali e penne



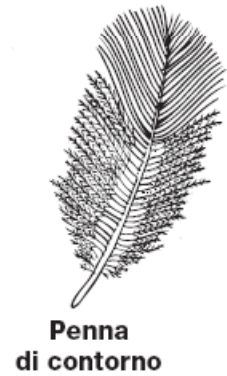
A. Vista dorsale della superficie dell'ala che mostra le penne



B. Vista ventrale dell'ala dopo aver asportato le penne tetrici

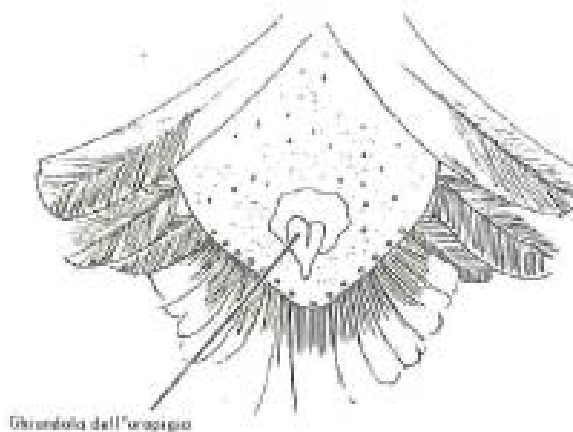


Penna remigante

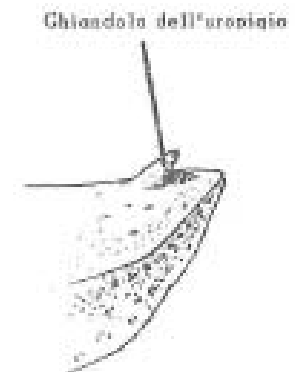


Penna di contorno

ghiandola dell'uropigio

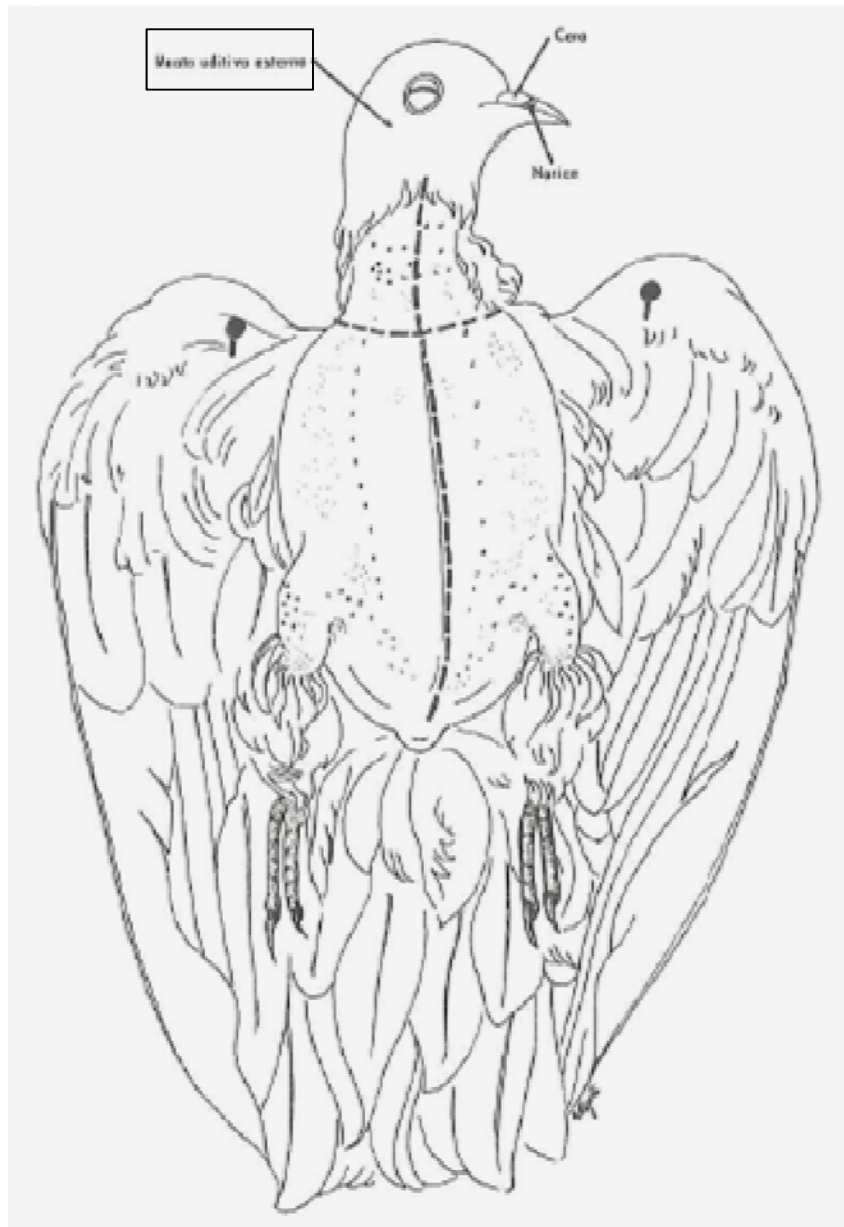


Ghiandola dell'uropigio



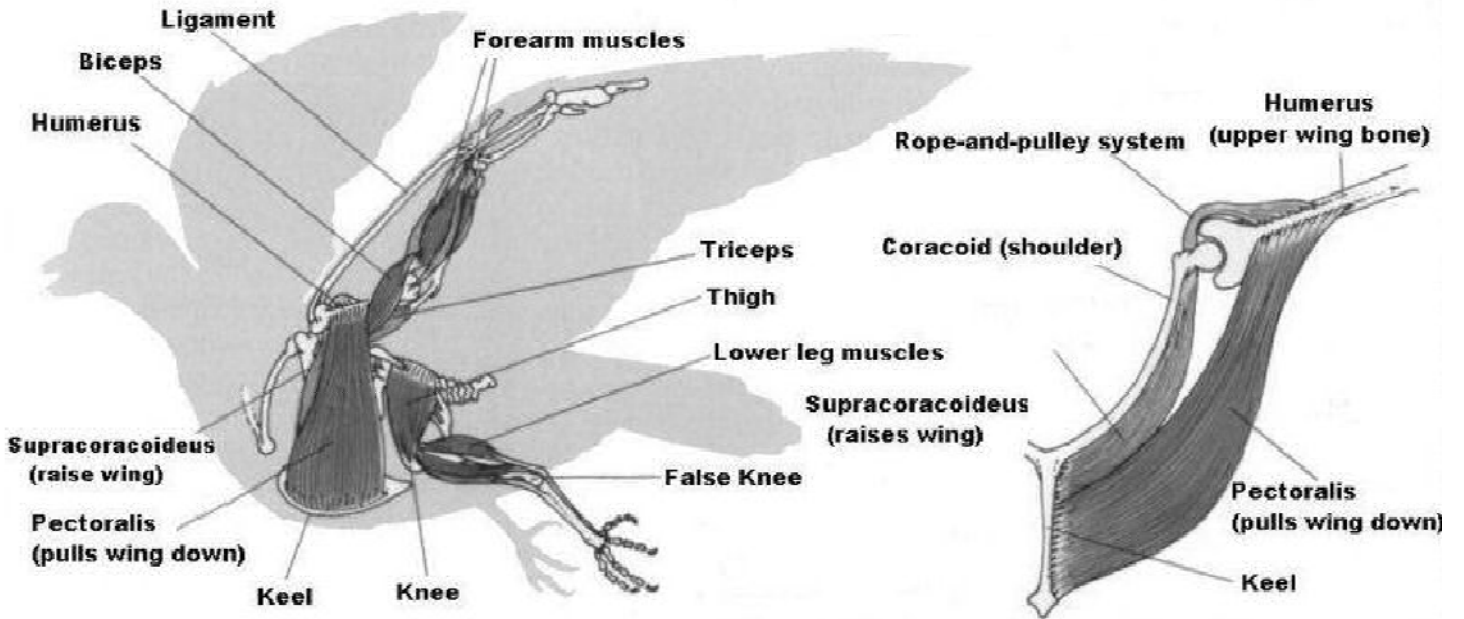
Ghiandola dell'uropigio

dissezione

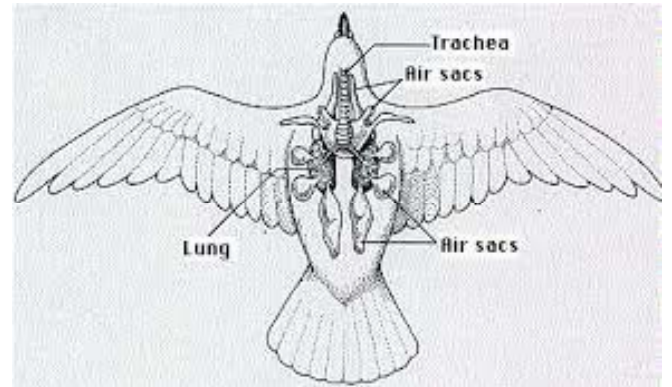
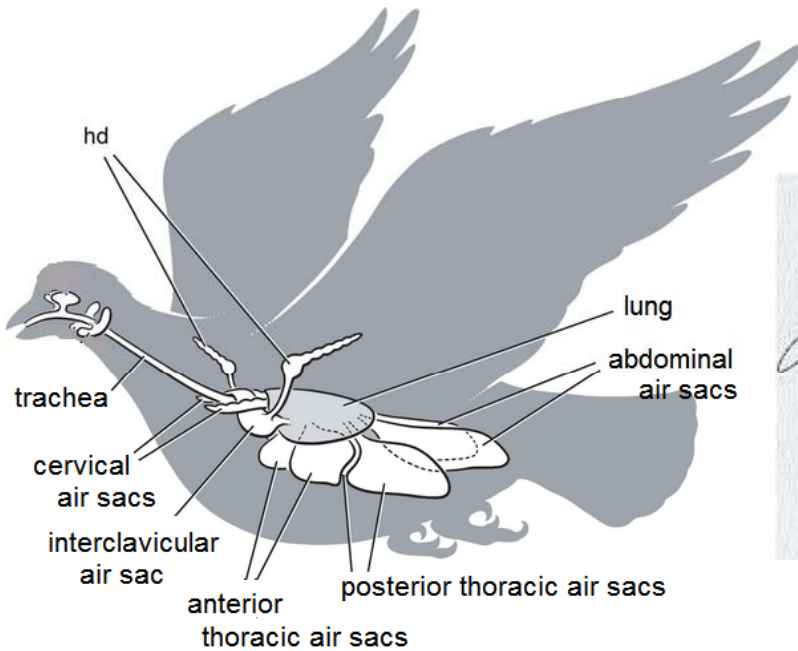


dopo aver bagnato l'esemplare, eliminare le penne della regione ventrale e del collo. Incidere lungo le linee tratteggiate

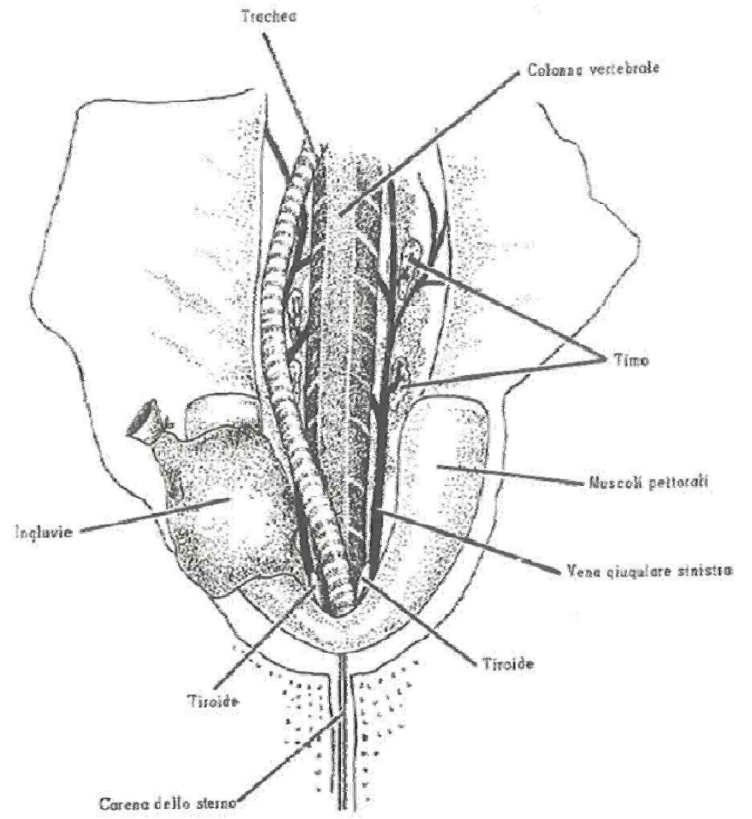
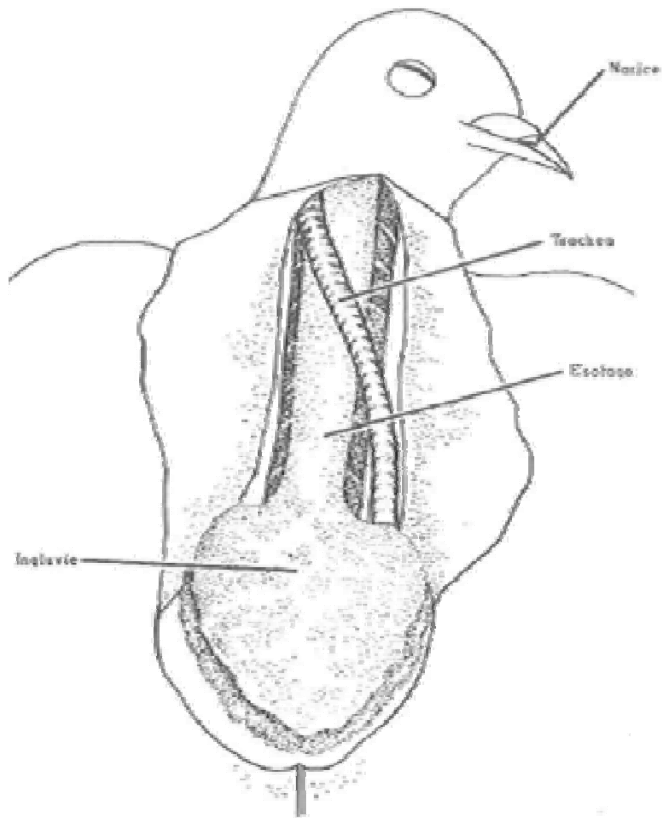
muscolo pettorale e muscolo sovracoracoideo



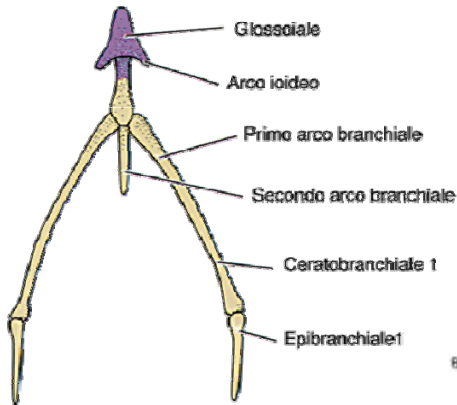
sacchi aeriferi



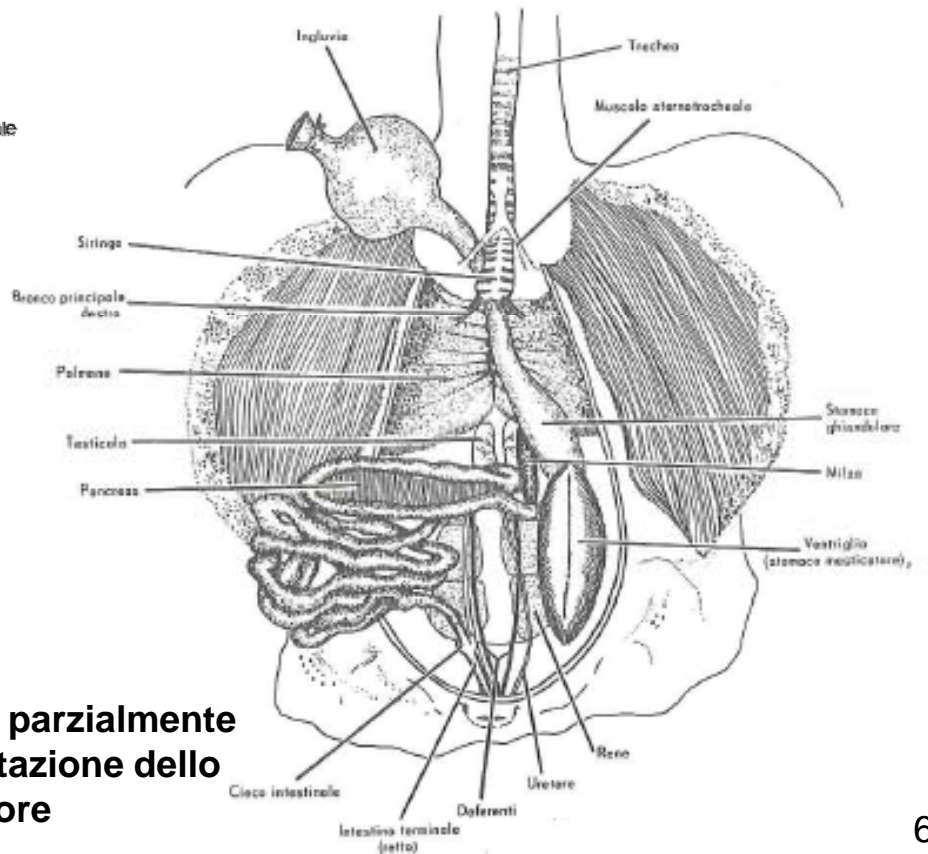
regione del collo



apparato iobranchiale

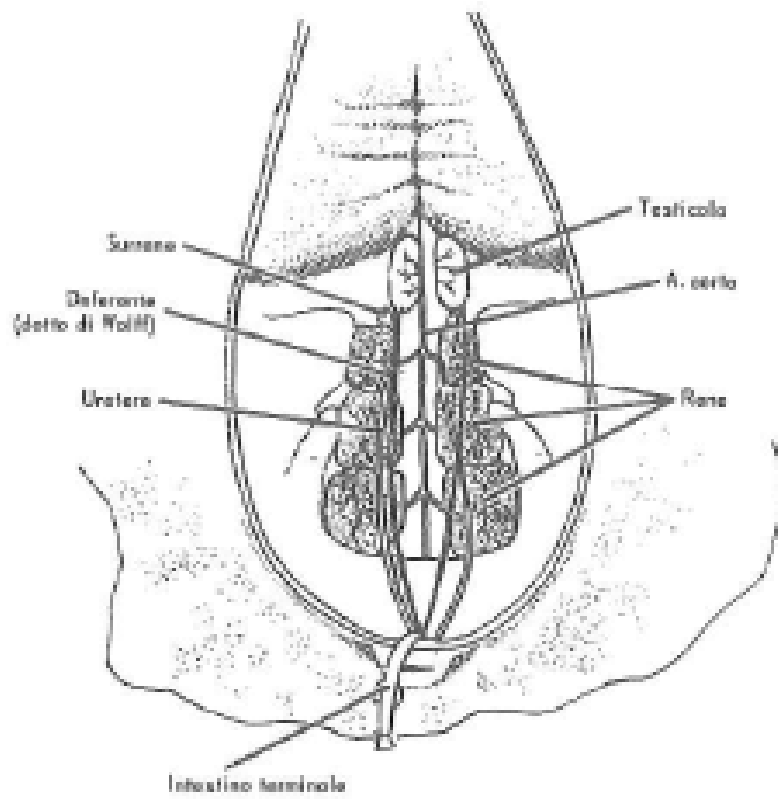


B. Uccello



apparato digerente parzialmente isolato dopo asportazione dello sterno, fegato e cuore

apparato urogenitale maschile



apparato urogenitale femminile

