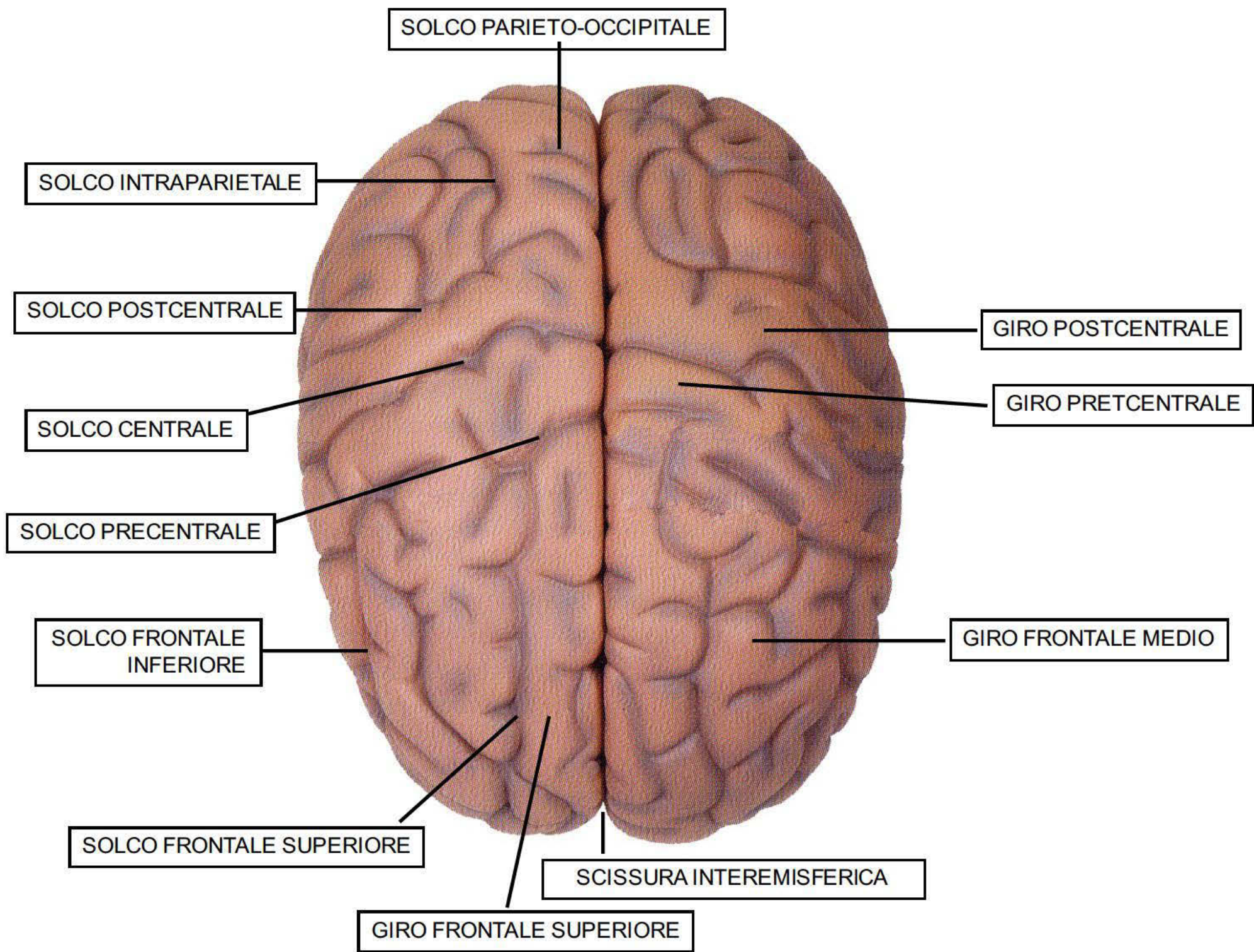


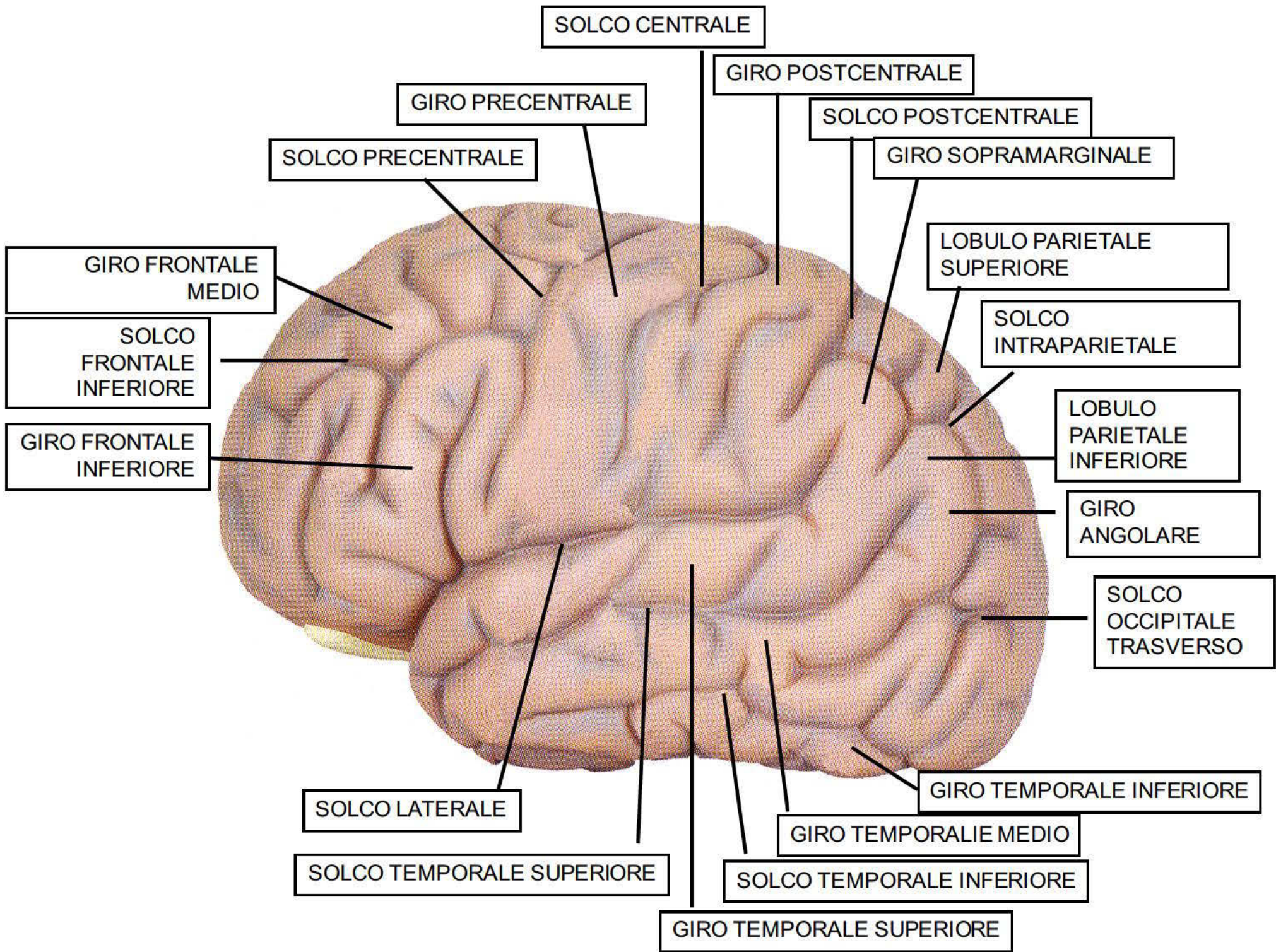
OLIMPIADI DELLE NEUROSCIENZE

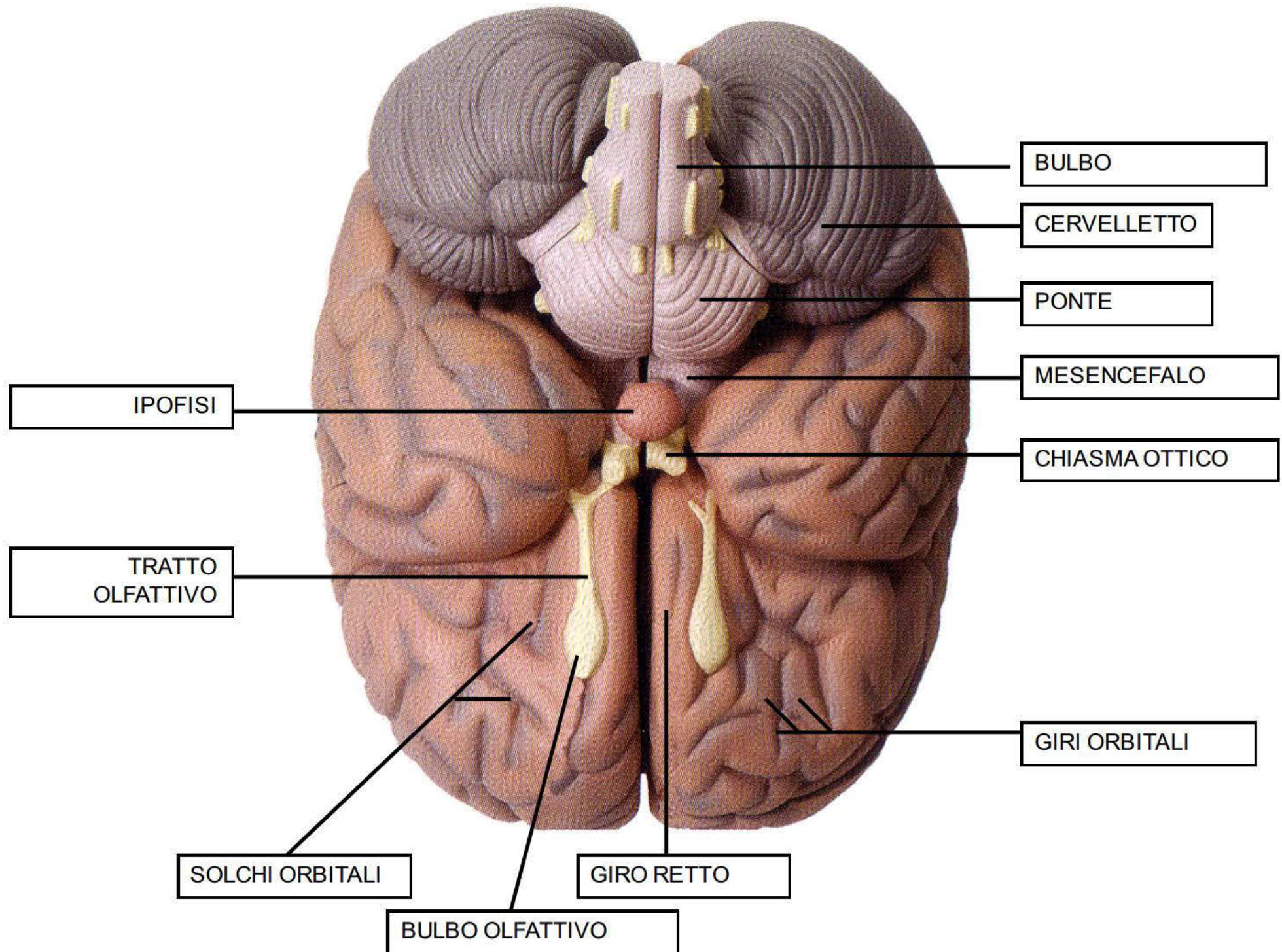


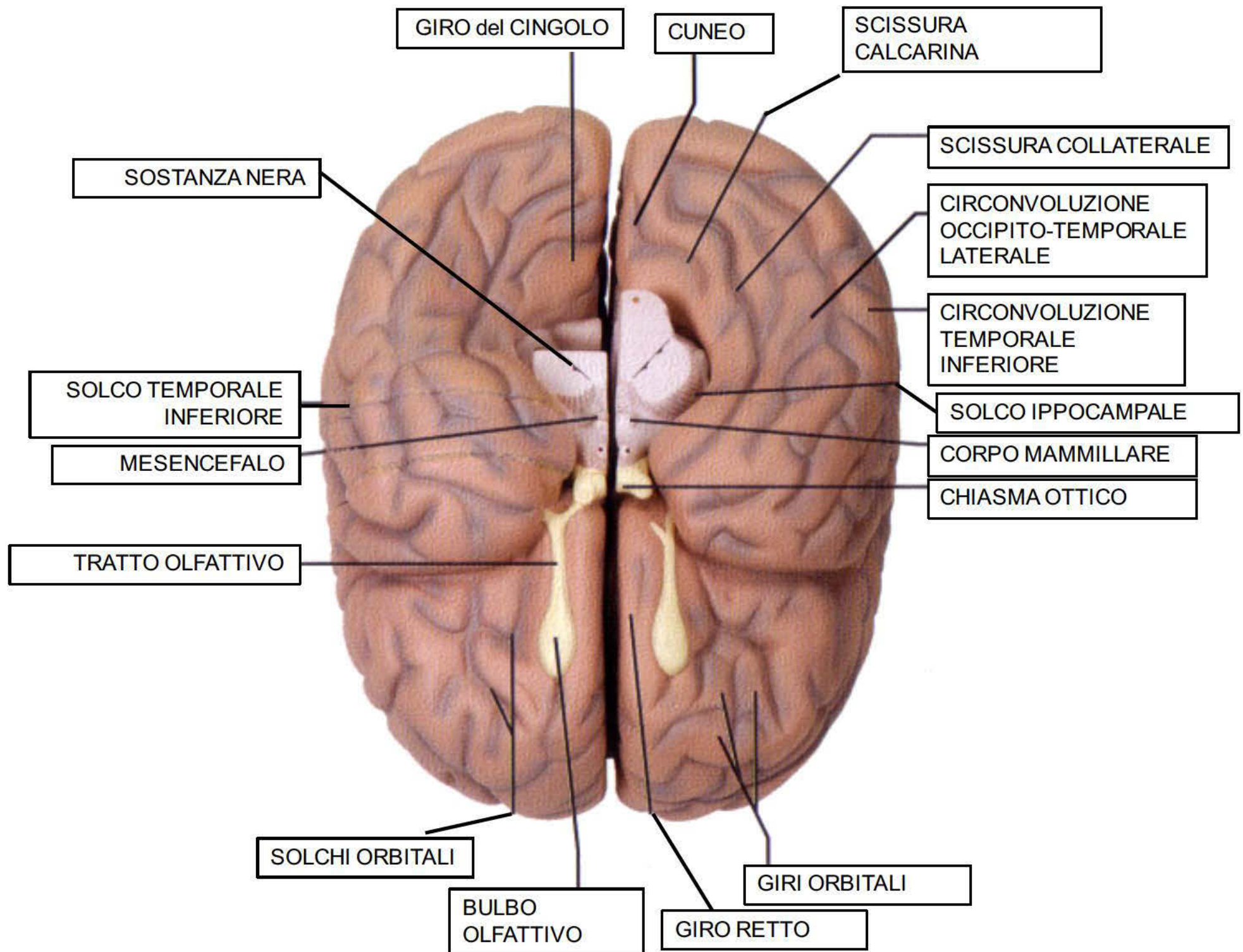
TAVOLE PER LE PROVE DI ANATOMIA

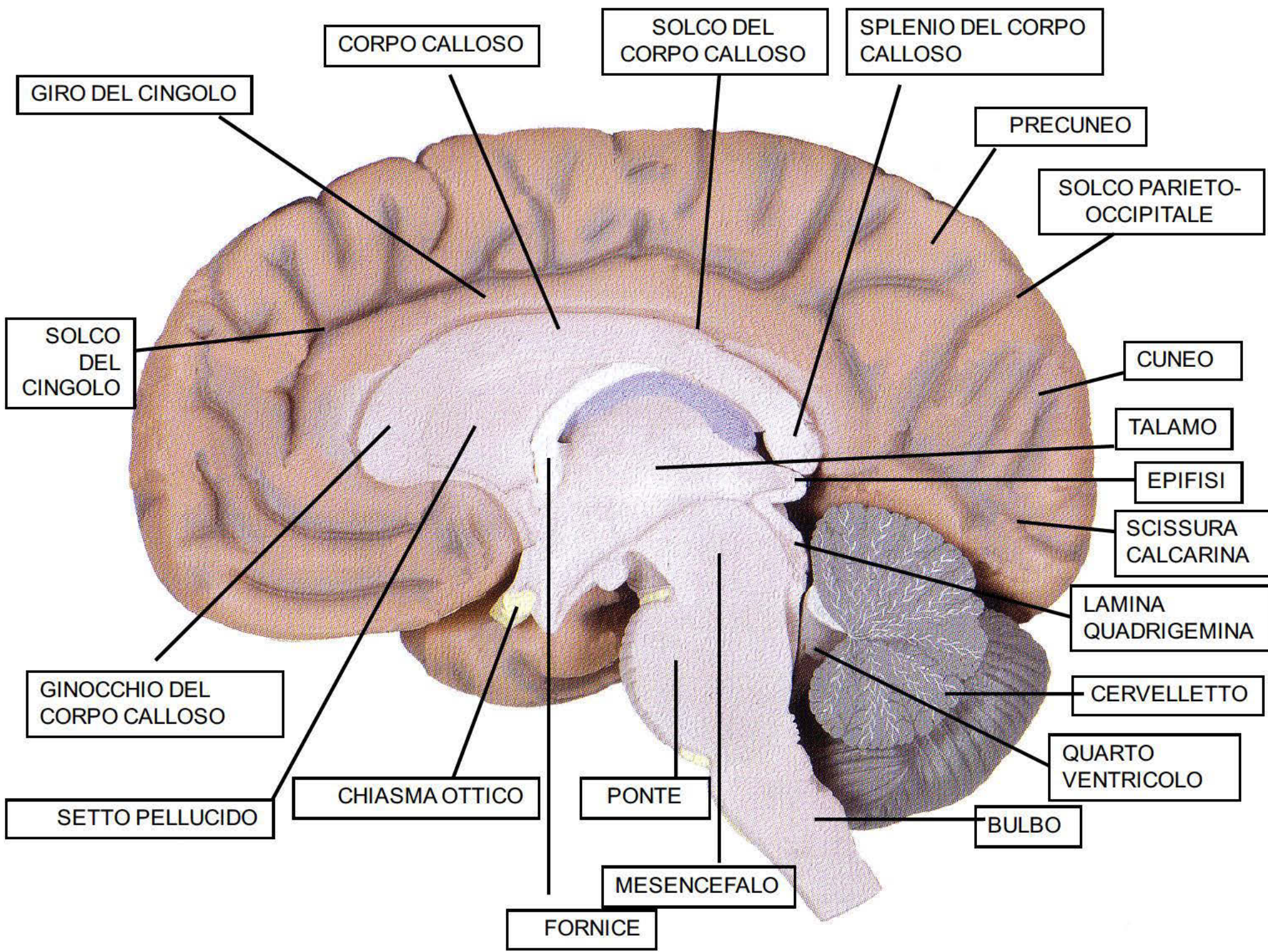
Le tavole con preparati originali sono riportate a solo scopo di approfondimento

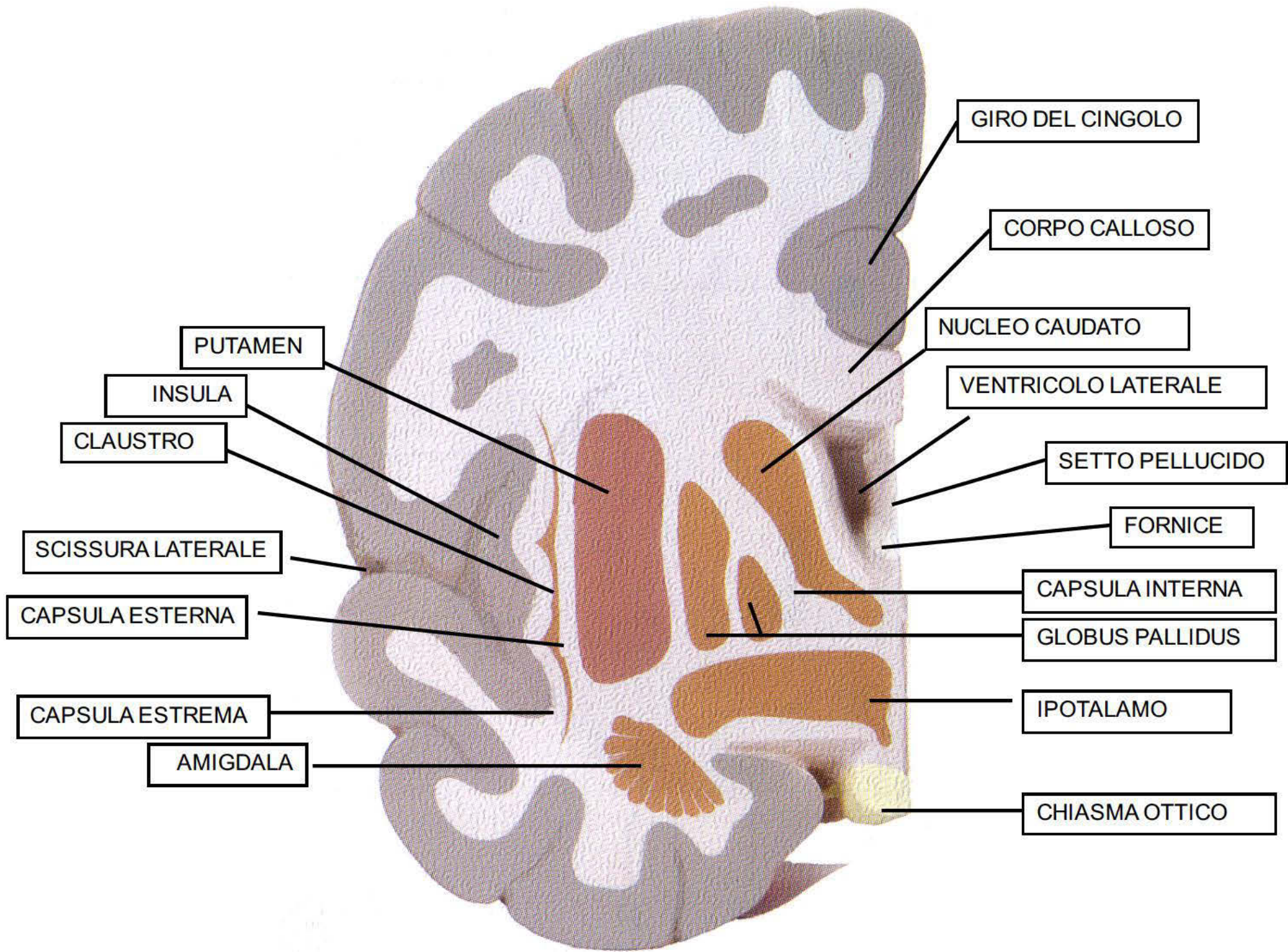


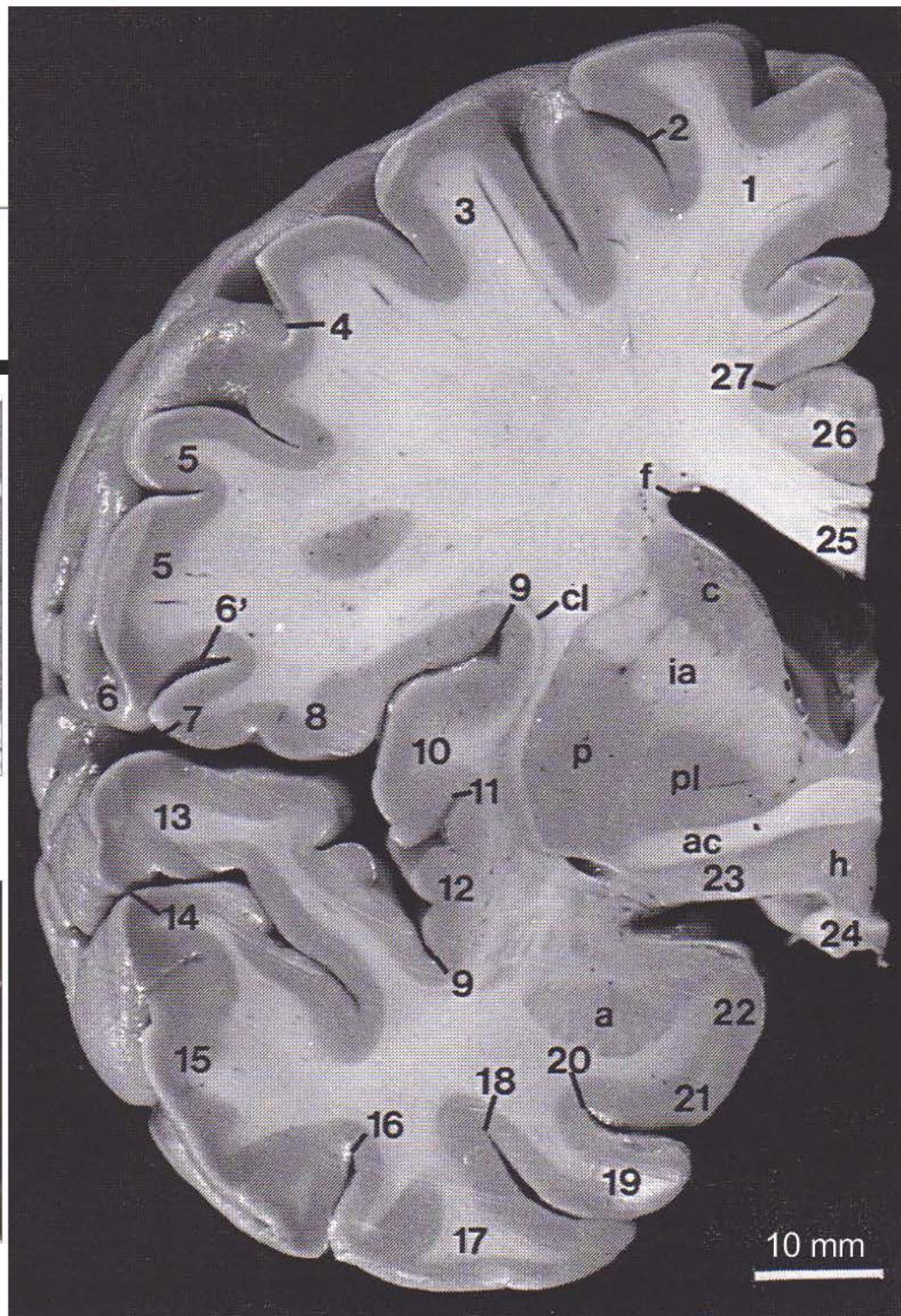
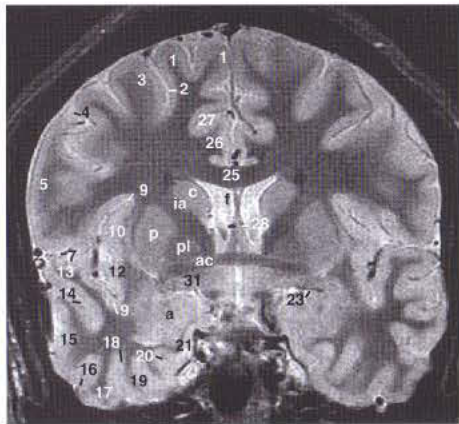
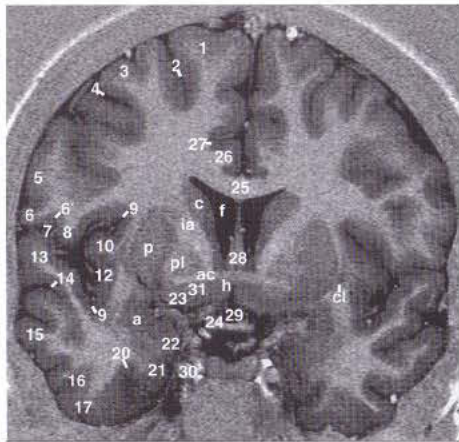
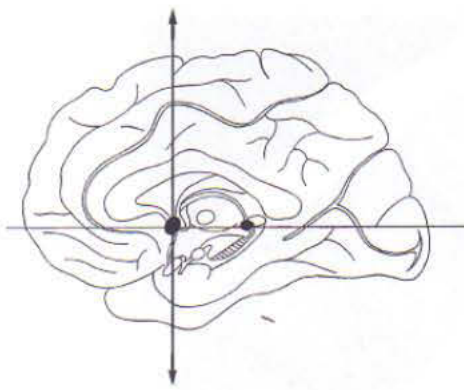






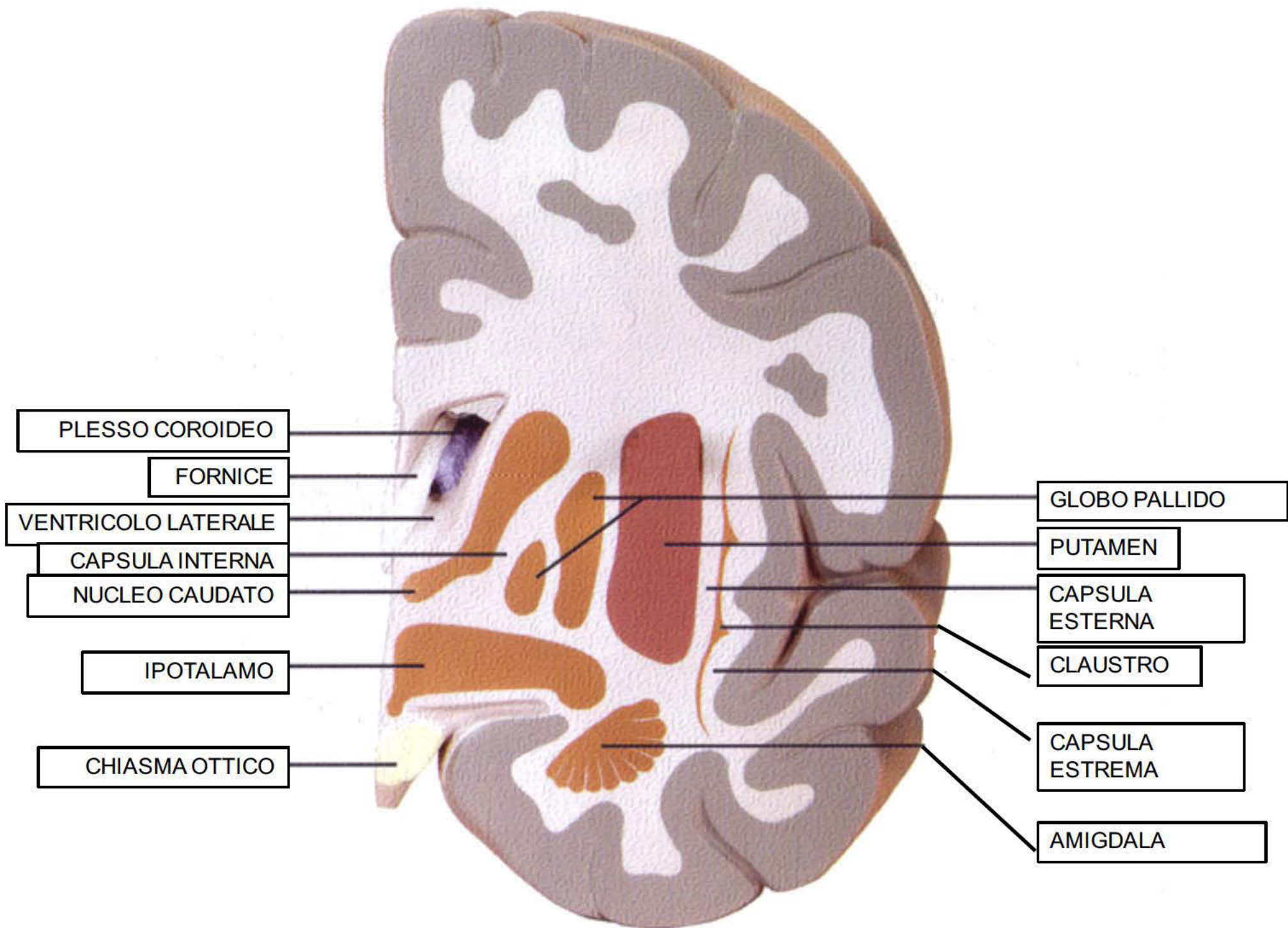




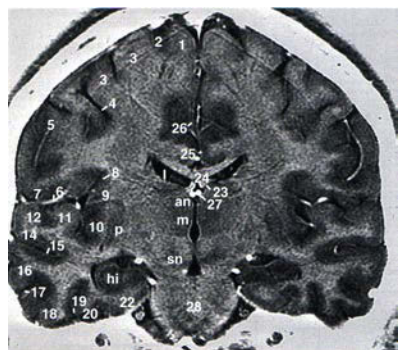


- 1.giro frontale superiore
- 2. solco frontale superiore
- 3. giro frontale mediale
- 4. solco precentrale superiore
- 5. giro precentrale
- 6'. solco centrale
- 6. giro subcentrale
- 6'. solco subcentrale anteriore
- 7. fessura laterale
- 8. opdercolo rolandico
- 9. solco insulare circolare
- 10. giro dell'insula
- 11.solco insulare centrale
- 12. giro dell'insula
- 13. giro temporale superiore (t1)
- 14. solco temporale superiore
- 15. giro temporale medio (t2)
- 16. solco temporale inferiore
- 17. giro temporale inferiore (t3)
- 18. solco occipito-temporale laterale
- 19. giro fusiforme (t4)
- 20. solco collaterale
- 21.corteccia entorinale
- 22. giro ambiens
- 23. sostanza perforata anteriore
- 24. chiasma ottico
- 25. corpo calloso
- 26. giro del cingolo
- 27. solco del cingolo
- 28. fornice
- 29. recesso soprachiasmatico
- 30. arteria carotide interna
- 31. pallido ventrale
- a amigdala
- ac commissura anteriore
- c nucleo caudato
- cl claustrum
- f corno frontale del ventricolo laterale
- h ipotalamo
- ia capsula interna
- p putamen
- pl globo pallido

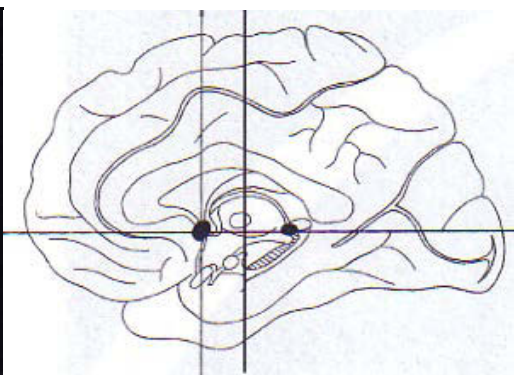
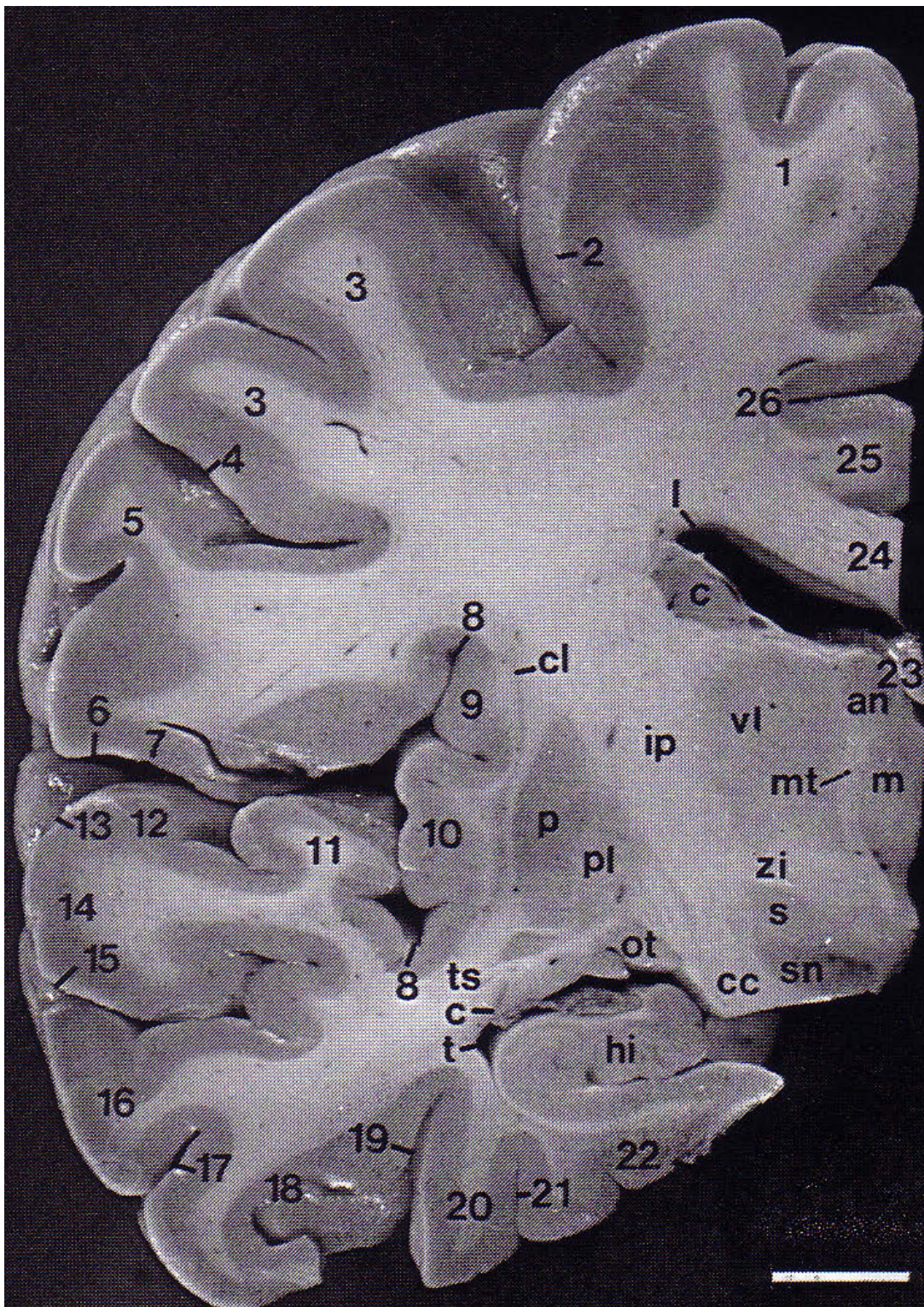
Duvernoy, fig. 57



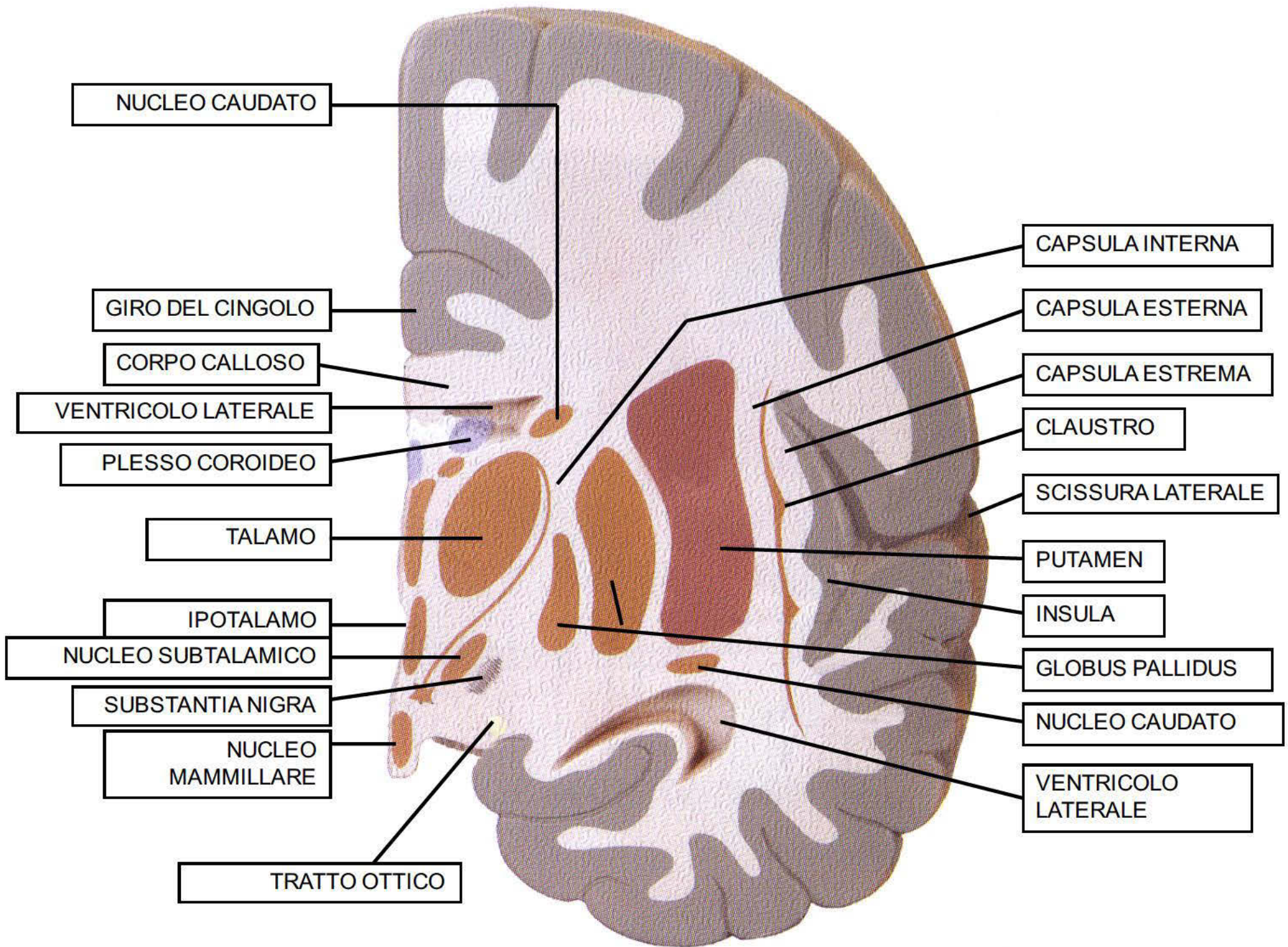
- AN** nucleo talamico anteriore
- C** nucleo caudato
- CC** crus cerebri
- CL** claustr
- HI** ippocampo
- IP** capsula interna
- L** ventricolo laterale
- M** nucleo talamico medio dorsale
- MT** tratto mammillare
- OT** tratto ottico
- P** putamen
- PL** globo pallido, parte laterale
- S** nucleo subtalamico
- SN** sostanza nera
- T** corno temporale del ventricolo laterale
- TS** tratto temporale
- VL** nucleo talamico ventrolaterale
- ZI** zona incerta



Duvernoy, fig. 65



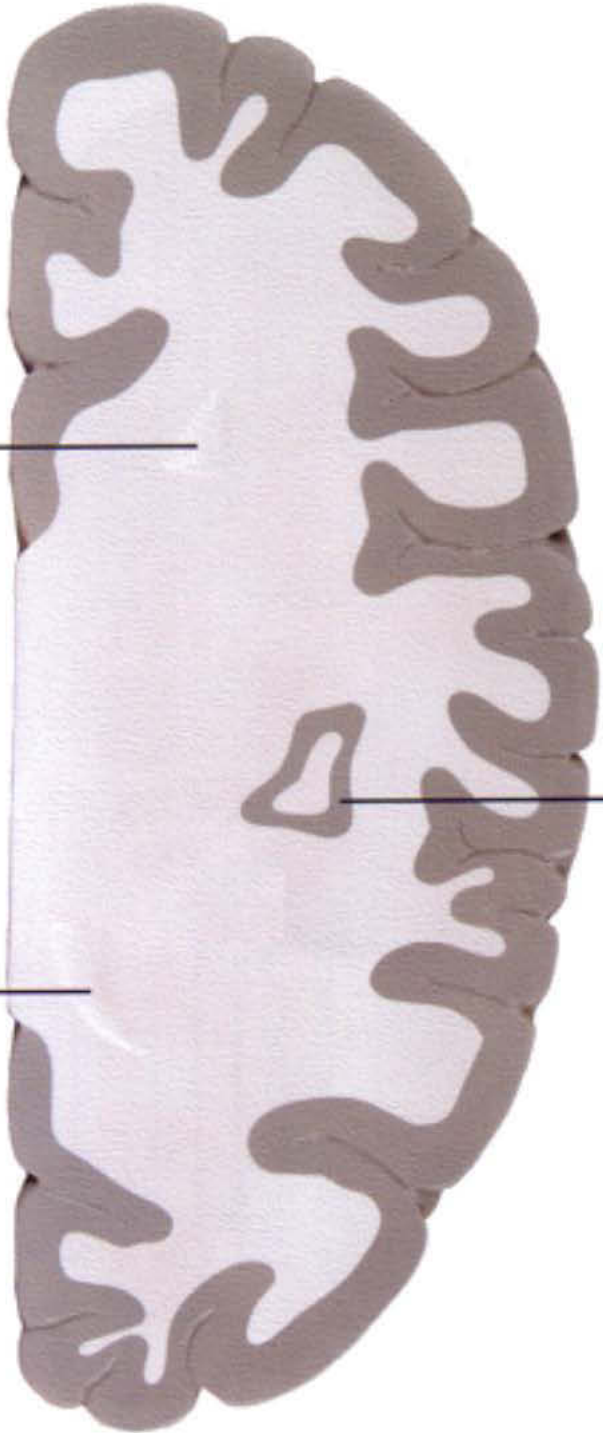
1. giro frontale superiore (F1)
2. solco precentrale superiore
3. giro precentrale
4. solco centrale
5. giro postcentrale
- 5'. solco postcentrale inferiore (segmento ascendente del solco Intraparietale)
6. scissura laterale
7. giro subcentrale
8. solco centrale dell'Insula
9. giro dell'Insula
10. giro dell'Insula
11. giro temporale trasverso anteriore
12. giro temporale trasverso superiore
13. solco temporale trasverso
14. giro temporale superiore (T1)
15. solco temporale superiore
16. giro temporale medio (T2)
17. solco temporale inferiore
18. giro temporale inferiore (T3)
19. solco occipito-temporale laterale
20. giro fusiforme (T4)
21. solco collaterale
22. giro para-ippocampale (T5)
23. fornice
24. corpo calloso
25. giro cingolato
26. solco cingolato
27. vena cerebrale interna
28. ponte

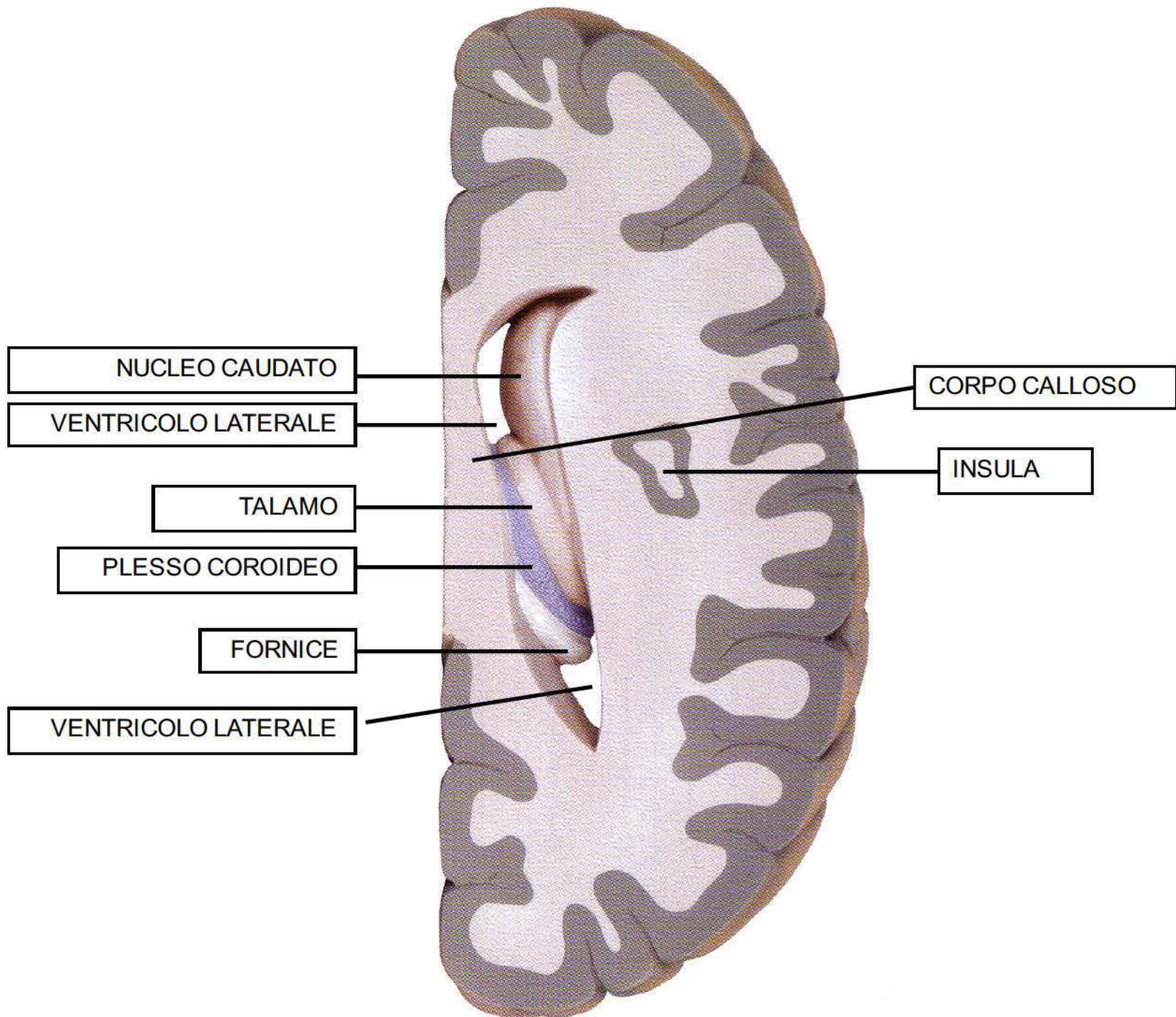


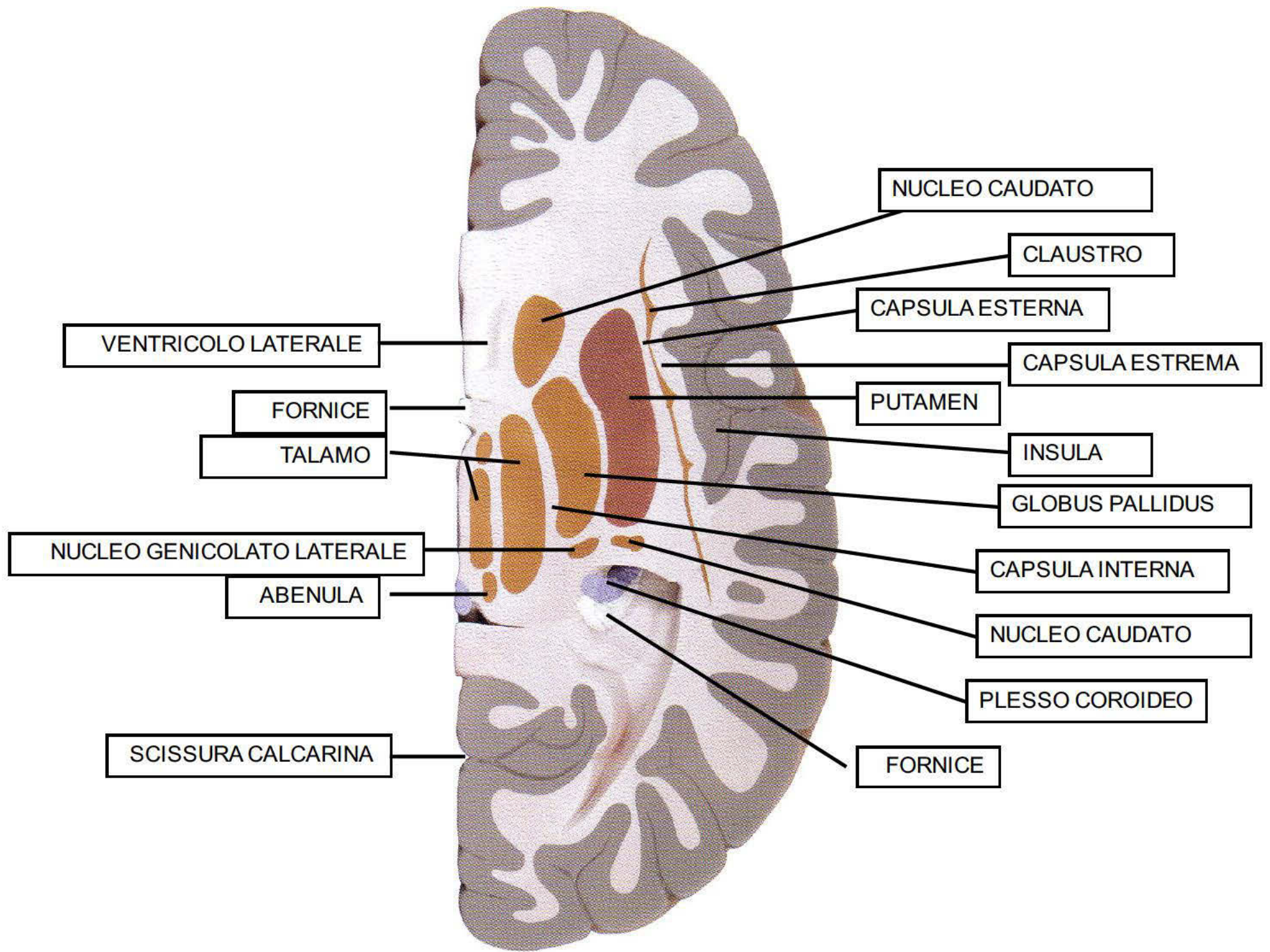
VENTRICOLO LATERALE

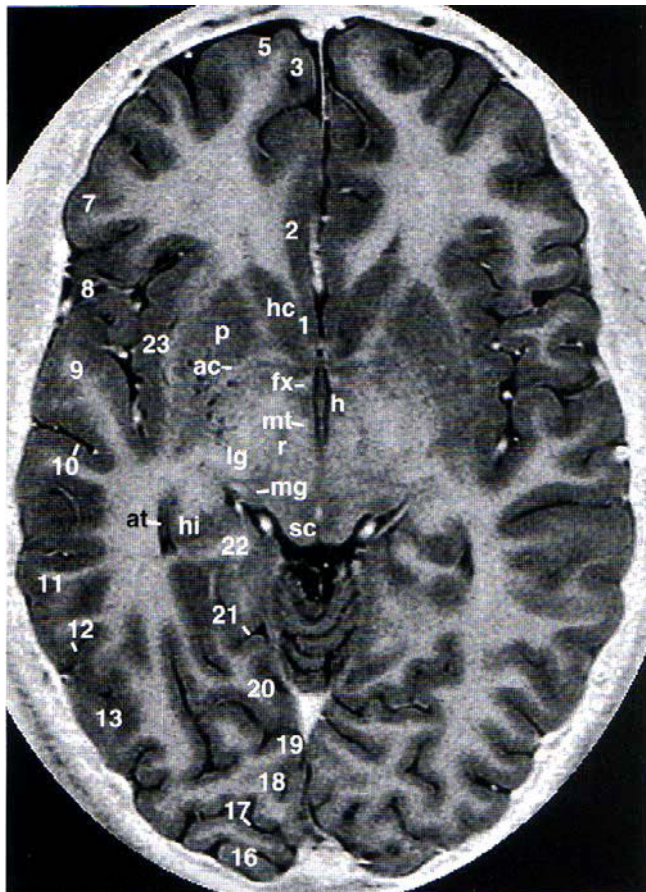
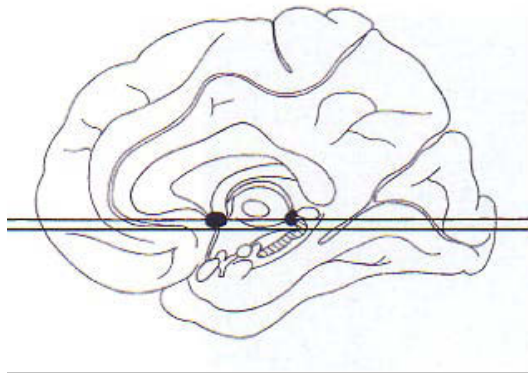
VENTRICOLO LATERALE

INSULA

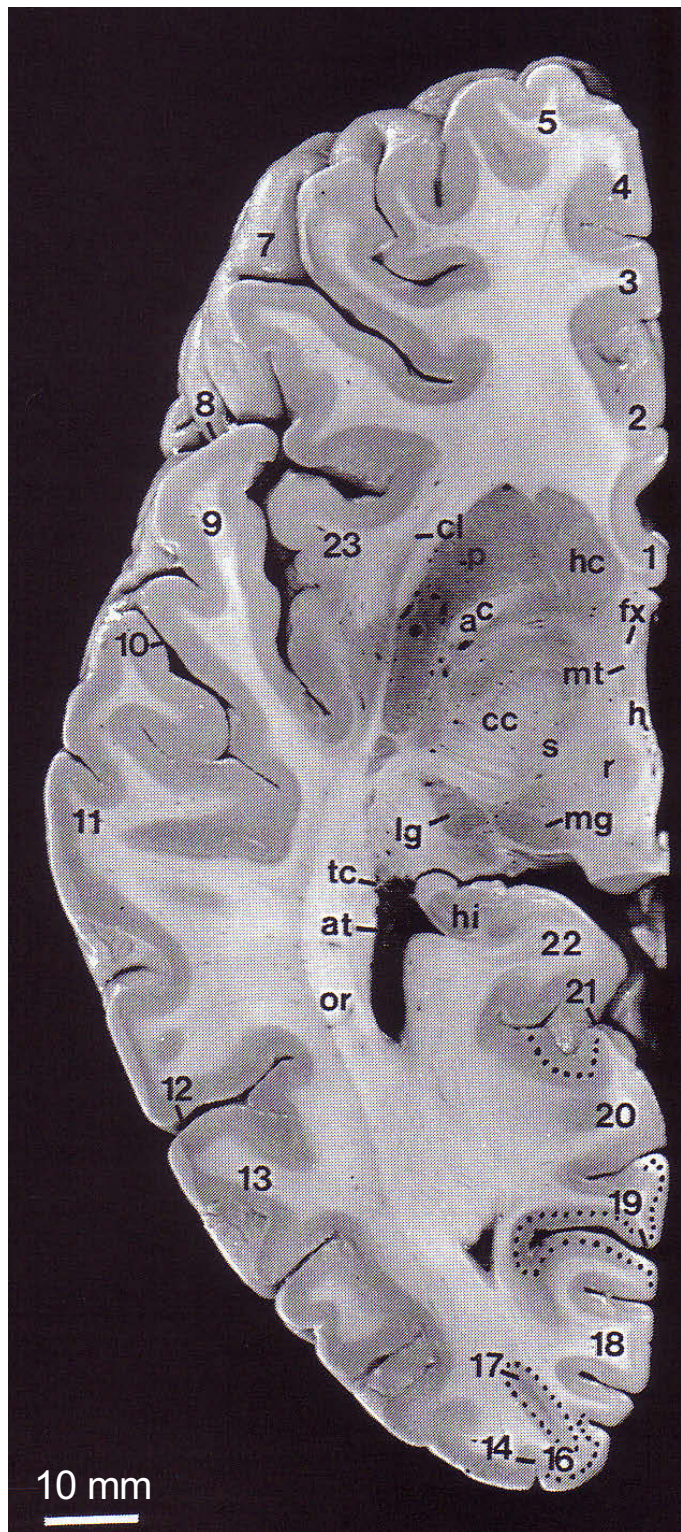






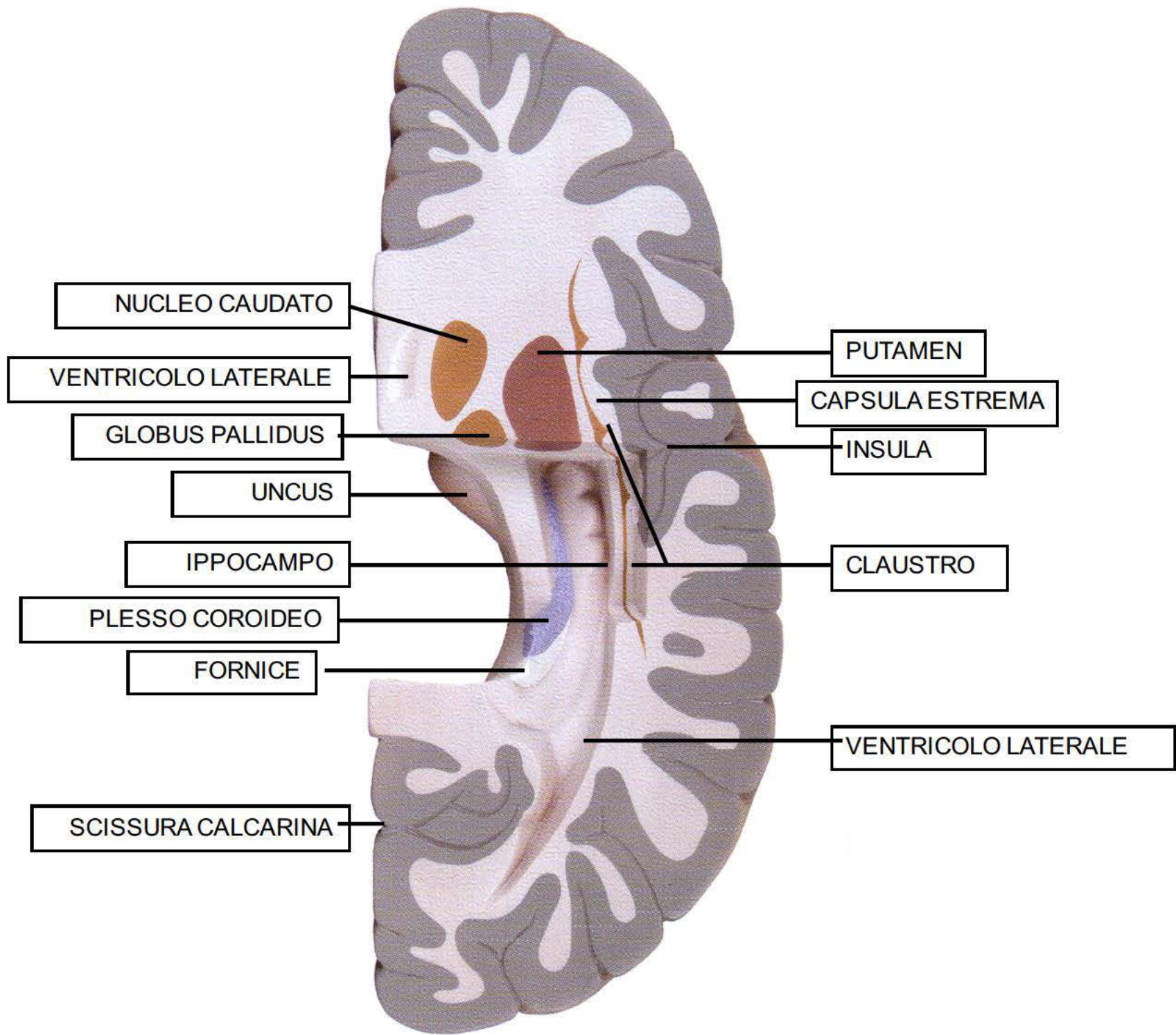


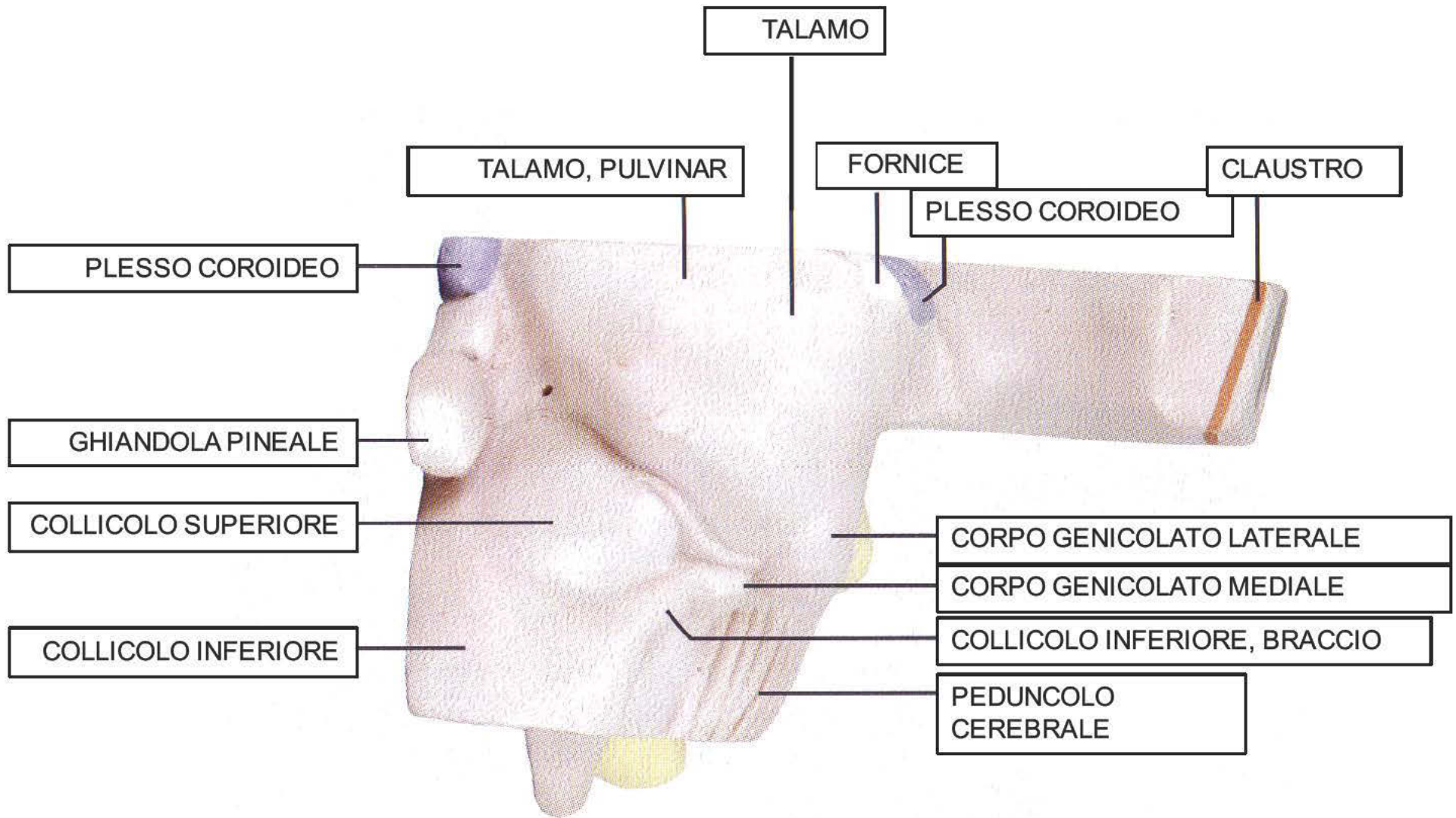
Duvernoy, fig. 194

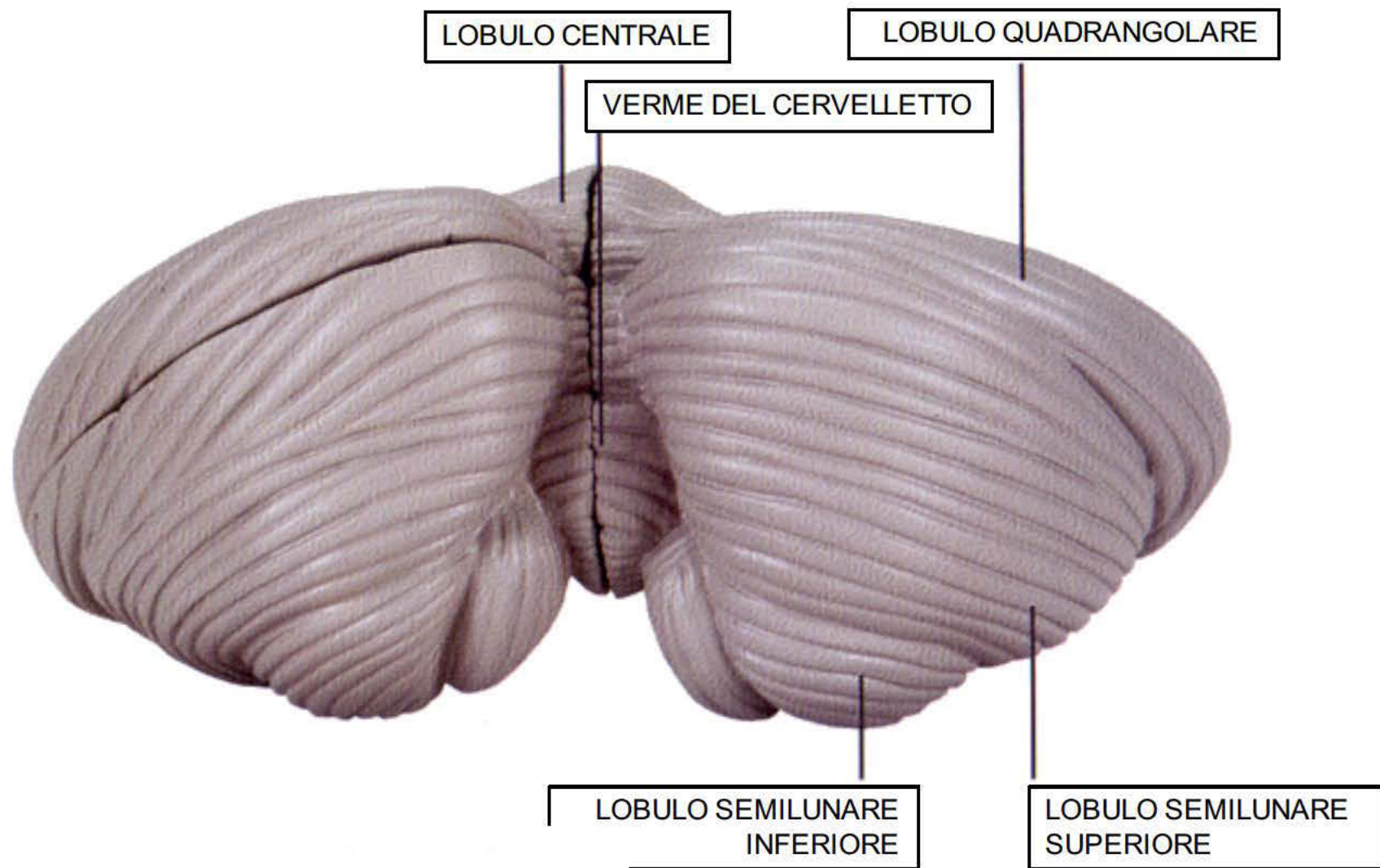


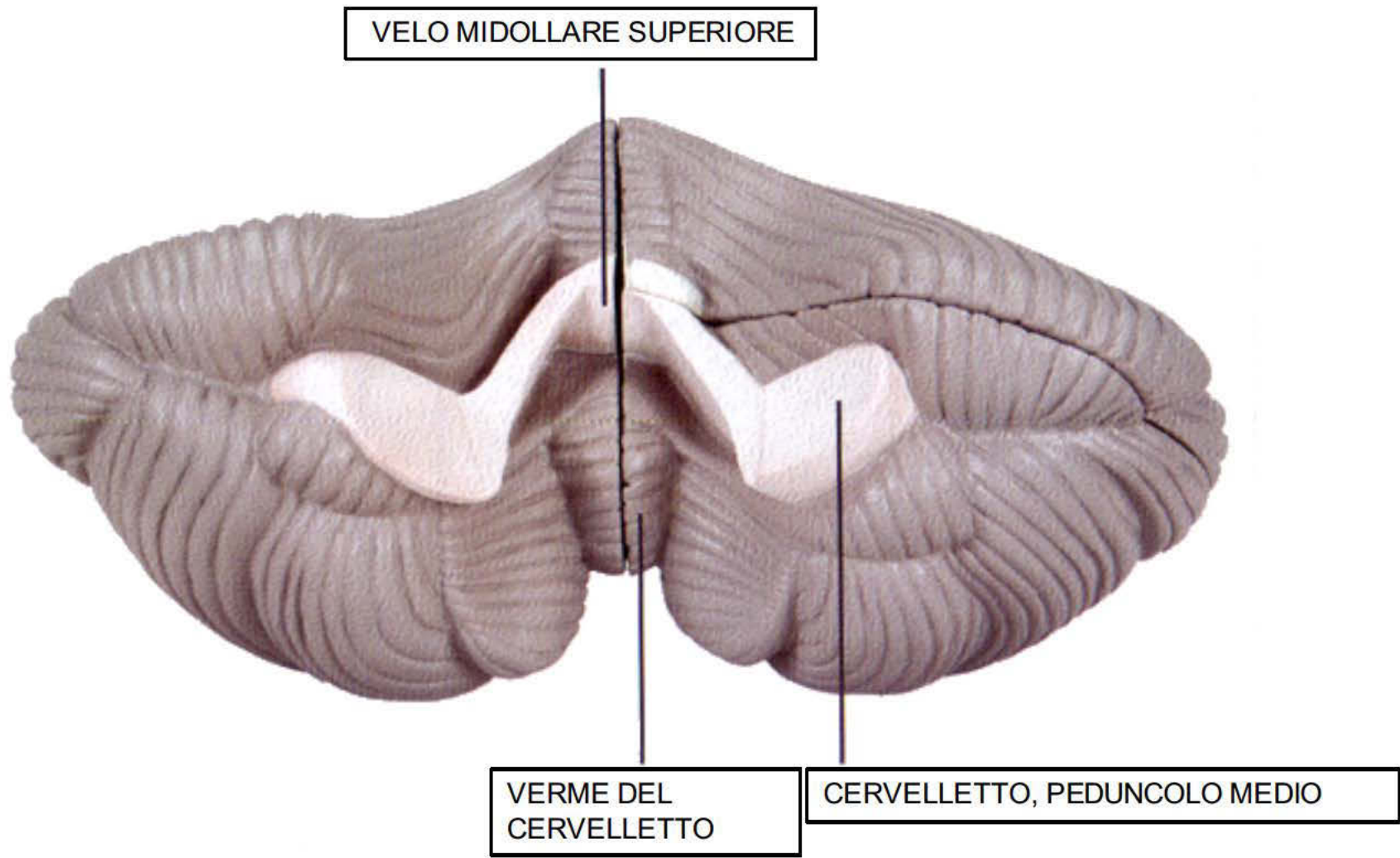
- 1 giro subcalloso
- 2 giro del cingolo
- 3, 4 giro frontale superiore
- 5 giro del margine frontale
- 6 solco fronto marginale
- 7 giro orbitale laterale
- 8 fessura laterale
- 9 giro temporale superiore (t1)
- 10 solco temporale superiore
- 11 giro temporale medio (t2)
- 12 solco occipitale anteriore
- 13 giro occipitale medio, parte superiore
- 14 solco occipito-polare
- 15 solco occipitale trasverso
- 16 giro discendente (Ecker)
- 17 solco retro calcarino
- 18 cuneo
- 19 solco calcarino
- 20 giro linguale superiore
- 21 solco calcarino anteriore
- 22 istmo
- 23 insula

- ac** atrio del ventricolo laterale
- cc** crus cerebri (peduncolo cerebrale)
- cl** claustr
- fx** fornice
- h** ipotalamo
- hc** testa del nucleo caudato
- hi** ippocampo
- lg** corpo genicolato laterale
- mg** corpo genicolato mediale
- mt** tratto mammillo-talamico
- or** radiazione ottica
- p** putamen
- r** nucleo rosso
- s** nucleo subtalamico
- sc** collicolo superiore
- tc** coda del nucleo caudato









VELO MIDOLLARE SUPERIORE

VERME DEL CERVELLETO

CERVELLETO, PEDUNCOLO MEDIO

